

Andrew Schwartz, *AICP CUD, PLA, LEED AP*

Environmental Planning & Design, LLC

www.epd-pgh.com

andrewschwartz@epd-pgh.com

412 261-6000

Databases

FileMaker Pro

www.filemaker.com



Mac and PC

FileMaker Go

www.filemaker.com



iOS Only

FileMaker Pro™



What Is It?

- Powerful cross-platform relational database; desktop and cloud-based

Features

- Drag and drop user interface – simple build tools
- Mail merge capabilities ideal for form letters, etc...
- Allows mobile apps to be created that utilize the main databases

Planning Office Functions

- Address lists
- Survey tabulation (such as community surveys)
- Permit/approval tracking (such as Land Development)
- Report input and output (such as MS4)
- Photographic/video inventory (such as corridor studies)
- Field assessments

FileMaker Go™



What Is It?

- Database portal for handheld or mobile devices; intended for use in the field

Features

- Form, list and table views
- Caches data entry until a reliable connection to a server can be made
- Allows mobile apps to be created that utilize the main databases
- Permits ArcGIS Maps, Google, YouTube and other API's to be integrated

Planning Office Functions

- Inspections (such as building or zoning)
- Surveys (such as community surveys)
- Report input and output (such as MS4)
- Photographic/video inventory (such as corridor studies)
- Field assessments

GPS

GeoTagr

www.galarina.eu



iOS

PDF Maps

www.avenza.com



Android and iOS

GPS

Strava

www.strava.com



Android and iOS

*GeoTagr*TM

What Is It?

- An iOS-based mobile GPS tracker; adjustable levels of accuracy and file size

Features

- A simple user interface to initiate coordinate collection and download

Planning Office Functions

- GPS coordinate annotations for time-stamped data such as photographs

*PDF Maps*TM

What Is It?

- Mobile .PDF map viewer with embedded GPS coordinates; Android and iOS

Features

- Access and load maps through iTunes File Sharing or Android file system or over a Wi-Fi or cellular network. Saved maps can be used without the need for a live network connection (offline).
- Quickly view, zoom and pan maps using gestures (pinch, drag and flick, double tap)
- View your location on a map using the built-in GPS device (requires iPhone and iPad Wi-Fi + Cellular or compatible Android device)
- Plot placemarks, change pin colors, position and label names, enter attribute data and notes
- Track real-time movement with GPS (includes speed and elevation statistics) - save, export and import tracks (as KML/KMZ)

Strava™

What Is It?

- Cross-platform mobile GPS tracker; adjustable levels of accuracy and file size

Features

- Simple user interface; can view your location in real time
- Design permits the tracks to be viewed online via an email invite function or the GPS logs to be exported and emailed
- GPS logs can be imported into ArcGIS as a shapefile

Planning Office Functions

- Field assessments
- Corridor studies/planning efforts
- ADA assessments
- Trail plans
- Environmental assessments (such as wetland walk-throughs)

Presentation

Slideshark

www.slideshark.com



SlideShark™

PC, Mac, Android and iOS

Haiku Deck

www.haikudeck.com



PC, Mac, Android and iOS

*SlideShark*TM

What Is It?

- A cross-platform presentation cloud access via a WiFi or Ethernet connection

Features

- Multiple levels of subscription
- Allows a single presentation to be presented via multiple devices including desktop computers and mobile devices
- Permits shared on-line presentations or broadcasts – easy distribution of URL links via email

Planning Office Functions

- PowerPoint and/or Keynote presentations
- .PDF documentation

Haiku Deck[™]

What Is It?

- A cross-platform presentation development and storage cloud access via a WiFi or Ethernet connection

Features

- Multiple levels of subscription including a free reader version
- Allows a presentation to be developed, stored, presented and shared across multiple devices including desktop computers (PC and Mac) and mobile devices
- Access to 30+ million image scrapbook
- Permits shared on-line presentations – distribution of URL links via email

Planning Office Functions

- Presentation creation tools
- Visualization tools

Engagement

NextDoor

www.nextdoor.com



Android and iOS

CivicViz

www.civicviz.com



Android and iOS

NextDoor™

What Is It?

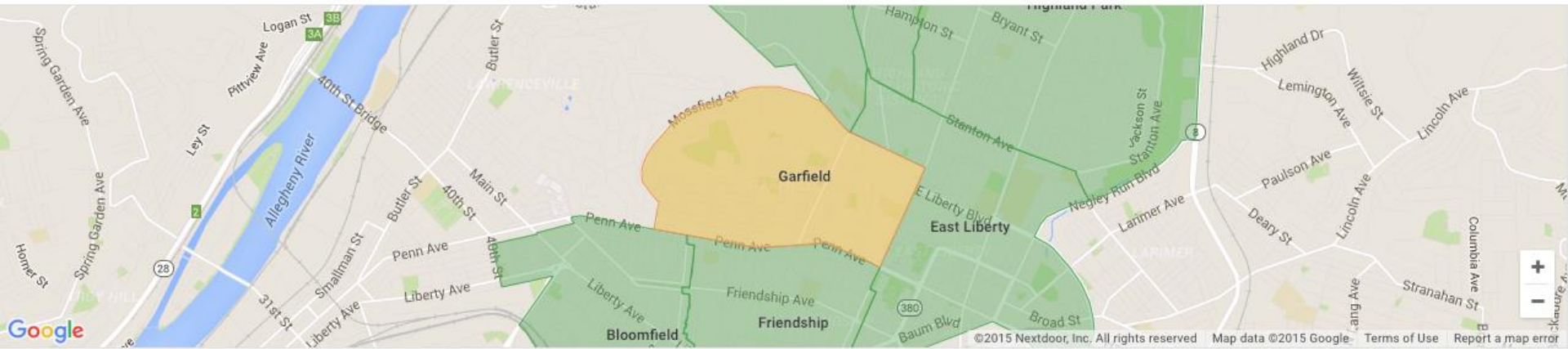
- Mobile .PDF map viewer with embedded GPS coordinates; Android and iOS

Features


- Access and load maps through iTunes File Sharing or Android file system or over a Wi-Fi or cellular network. Saved maps can be used without the need for a live network connection (offline).
- Quickly view, zoom and pan maps using gestures (pinch, drag and flick, double tap)
- View your location on a map using the built-in GPS device (requires iPhone and iPad Wi-Fi + Cellular or compatible Android device)
- Plot placemarks, change pin colors, position and label names, enter attribute data and notes
- Track real-time movement with GPS (includes speed and elevation statistics) - save, export and import tracks (as KML/KMZ)


NextDoor™


[Pennsylvania](#) / [Pittsburgh](#) / [Garfield](#)




Garfield

 Pittsburgh, PA

 Population: 3674 residents

 Average age: 43 years old

 Homeowners: 44%

U.S. Census 2010

Why neighbors love it

Community

Walkability


Food

Urban

Walking

Diversity

Events



Hi!

Sign up to discover your neighborhood

More than 77,000 U.S. communities

*Civic Viz*TM

What Is It?

- Mobile .PDF map viewer with embedded GPS coordinates; Android and iOS

Features

- Access and load maps through iTunes File Sharing or Android file system or over a Wi-Fi or cellular network. Saved maps can be used without the need for a live network connection (offline).
- Quickly view, zoom and pan maps using gestures (pinch, drag and flick, double tap)
- View your location on a map using the built-in GPS device (requires iPhone and iPad Wi-Fi + Cellular or compatible Android device)
- Plot placemarks, change pin colors, position and label names, enter attribute data and notes
- Track real-time movement with GPS (includes speed and elevation statistics) - save, export and import tracks (as KML/KMZ)

CivicViz™

Email : contact@civicviz.com



Home

Services



FAQ

Pricing/Signup

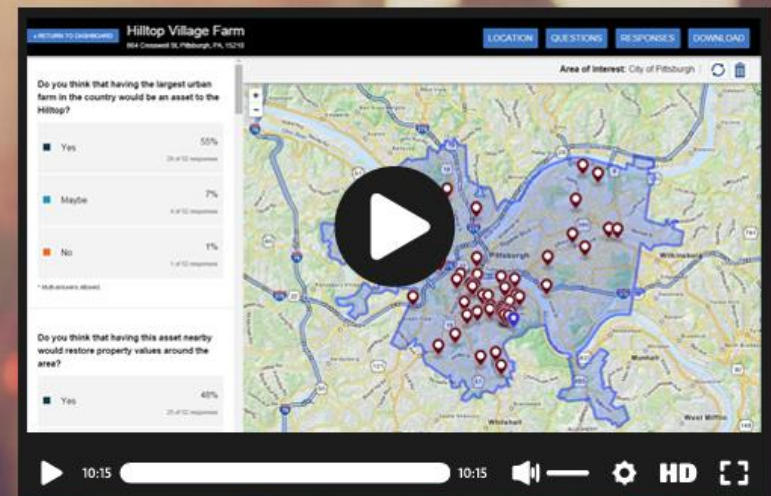
Blog

Login

VISUALIZE PUBLIC OPINION

-  Publish Information About a Project
-  Start a Community Survey
-  Analyze Local Opinions

LEARN MORE



We help you collect and understand local opinions.

GET STARTED NOW

Documentation

GoodNotes

www.goodnotesapp.com

GoodNotes

iOS Only

Concepts

www.concepts.tophatch.com



iOS Only

GoodNotes™

What Is It?

- No cost mobile iOS hand notation, sketching and mark-up app

Features

- Digital vector ink and highlighter tools
- Changeable backgrounds and layouts
- Permits the handnotes and sketches to be exported in .JPEG and .PDF file formats; allows files to be emailed or exchanged
- Accepts outside images and sketches
- Simple design with limited options – not complicated
- Basic editing tools allow cutting, pasting, stretching, etc...
- Works in conjunction with a stylus for precise input

Planning Office Functions

- Field assessments
- On-screen meeting notes (alternatives to a newsprint pad)
- Photographic mark-ups

Concepts™

What Is It?

- Low-cost mobile iOS-based vector line illustration app

Features

- A full set of drawing tools including brushes, pens, markers and text annotations
- Allows layers to be created and individually managed
- Expandable toolsets and palettes based on purchased add-ons
- Files can be exported at JPEG and.PNG (with transparent backgrounds)files; can also be exported as DXF (CAD-based) and PSD (Photoshop) files
- Works in conjunction with a stylus for precise input

Planning Office Functions

- Graphic
- On-screen meeting notes (alternatives to a newsprint pad)
- Photographic mark-ups

Hardware

Wireless Projectors



PICO Projectors



Old Digital Cameras



Hardware Support

GeoTag

www.goodnotesapp.com

GoodNotes

iOS Only

GeoSetter

www.concepts.tophatch.com



iOS Only