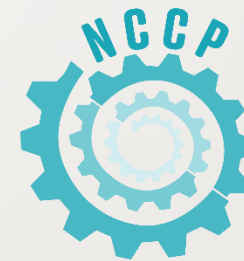


Planning for the 2020s - and beyond

LEONARDO VAZQUEZ, AICP/PP

THE NATIONAL CONSORTIUM FOR CREATIVE PLACEMAKING

NEW ENGLAND COLLEGE



THE NATIONAL CONSORTIUM FOR
CREATIVE PLACEMAKING



What do you think will be the biggest issues we face as planners this decade?

Please write in the chat area



Major planning paradigms



PROSCRIPTIVE | PRESCRIPTIVE | *ADAPTIVE*

Proscriptive planning

- Outcomes: **Euclidean zoning, use-based controls, land use boards as regulators**
- Major movements: **City Efficient, Historic Preservation, Growth Management**
- Legal validation: **Euclid v. Ambler, Penn Central v. NYC, Buchanan v. Warley**
- Heroes: **Burnham, Duany, all the planners who say 'no'**
- Professional culture: **Orthogonal, hierarchical, bureaucratic**
- Good for: **Protection**

Insecure





Prescriptive planning

- Outcomes: **Design guidelines, incentive zoning, strategic planning, 'big data analysis', land use boards as designers**
- Major movements: **City Beautiful, New Urbanism, Smart Growth**
- Legal validation: **Berman v. Parker, Belle Terre v. Boraas**
- Heroes: **Olmsted, Duany, Florida, Jacobs**
- Professional culture: **Entrepreneurial, inspirational**
- Good for: **Providing direction**

Arrogant

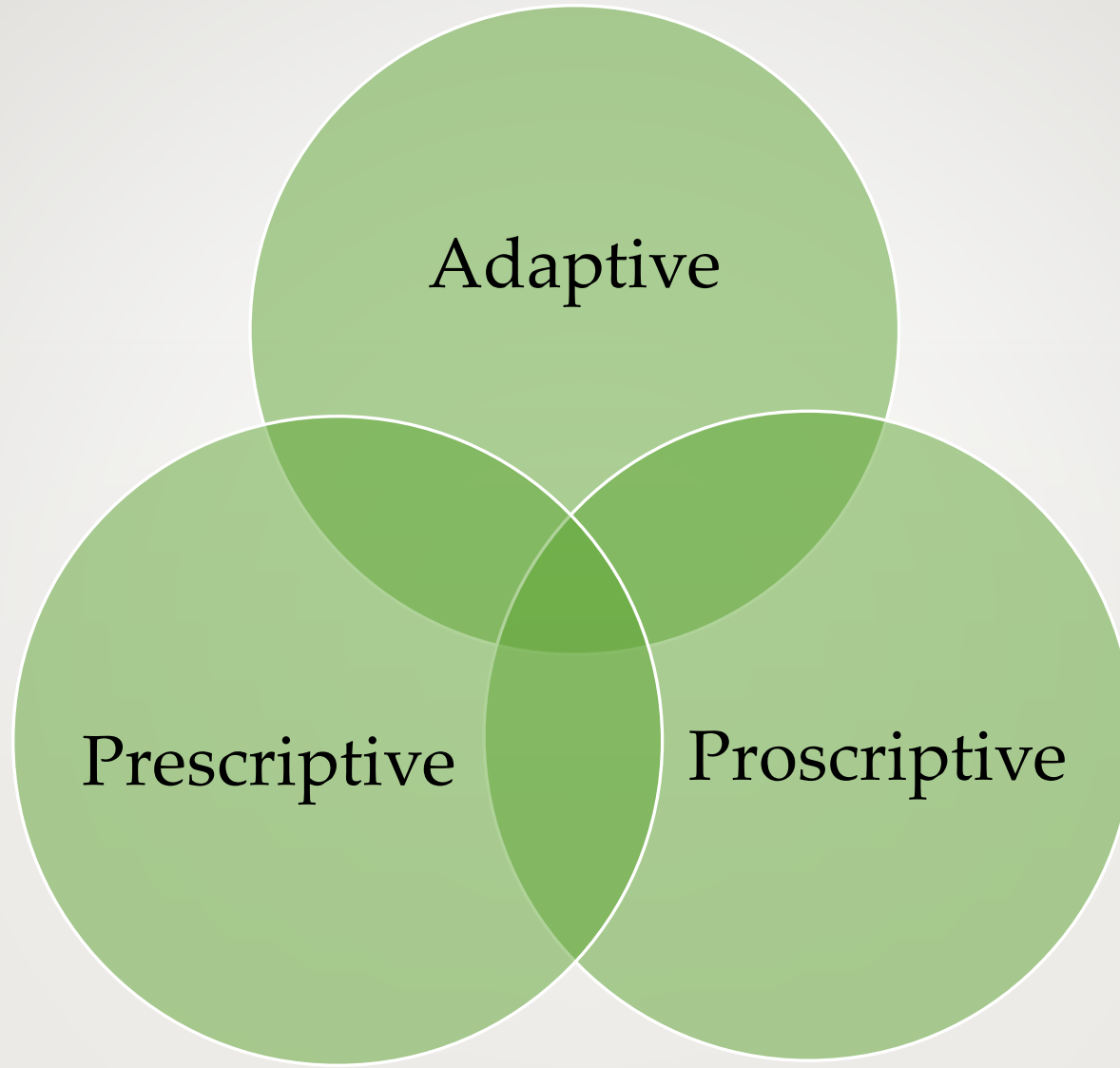
Adaptive planning

- Outcomes: **Form-based codes, tactical urbanism, planners as mediators**
- Major movements: **Tactical urbanism, creative placemaking, communicative planning**
- Legal validation: ??
- Heroes: **Jacobs, Whyte, Markusen & Gadwa Nicodemus, Lydon & Garcia, Borrap**
- Professional culture: **Reflective, collaborative**
- Good for: **Decision-making in diverse and dynamic conditions**

*Humble but confident**

*(side effects can include: instability, greater risk-tolerance, email overload)





Becoming a more adaptive planner: competencies

- Systems thinking
- Game theory
- Wicked problems
- Mental models
- Group development
- Collaborative leadership
- Emotional intelligence
- Cultural competency



Creative placemaking

What images would you come up with?

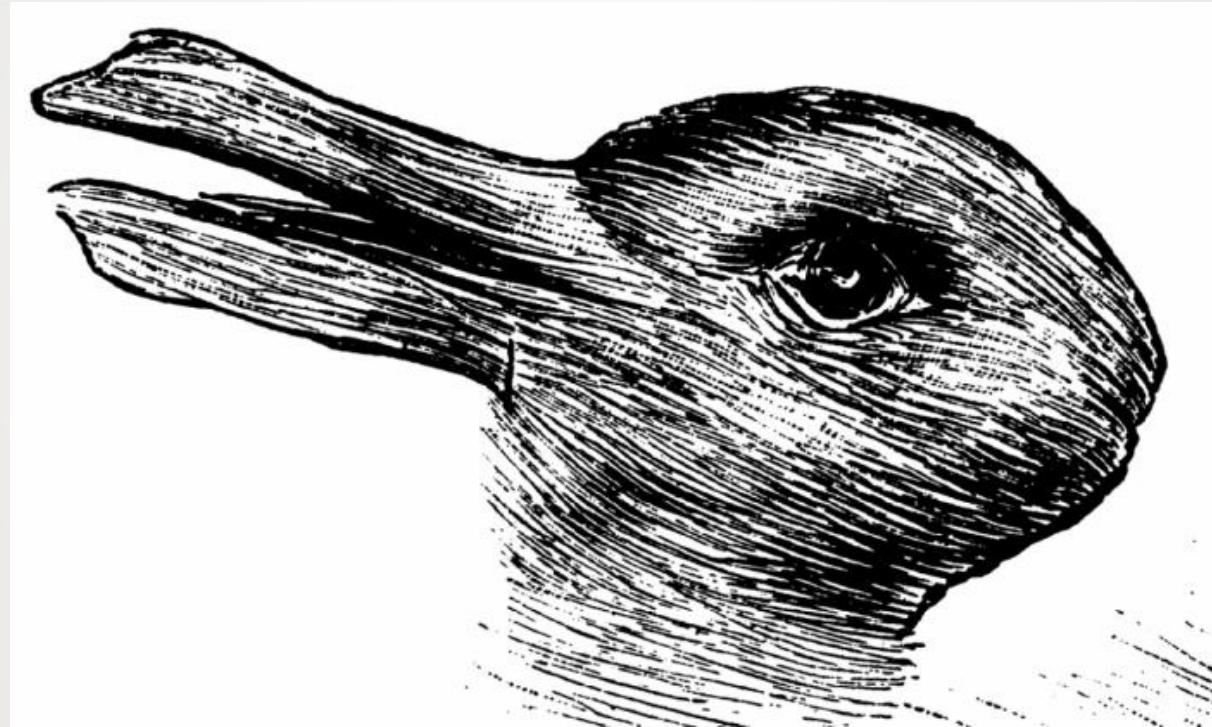


Learning from artists

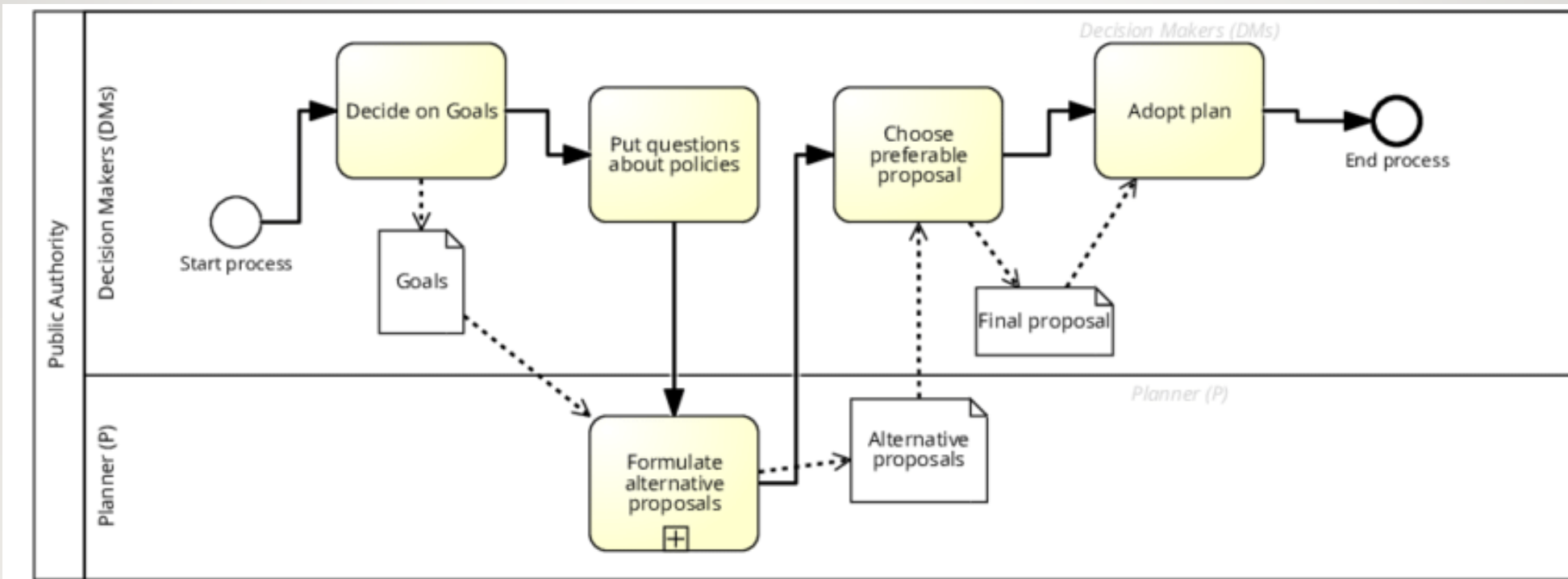




Seeing differently; thinking differently



How A/E/P professionals problem-solve



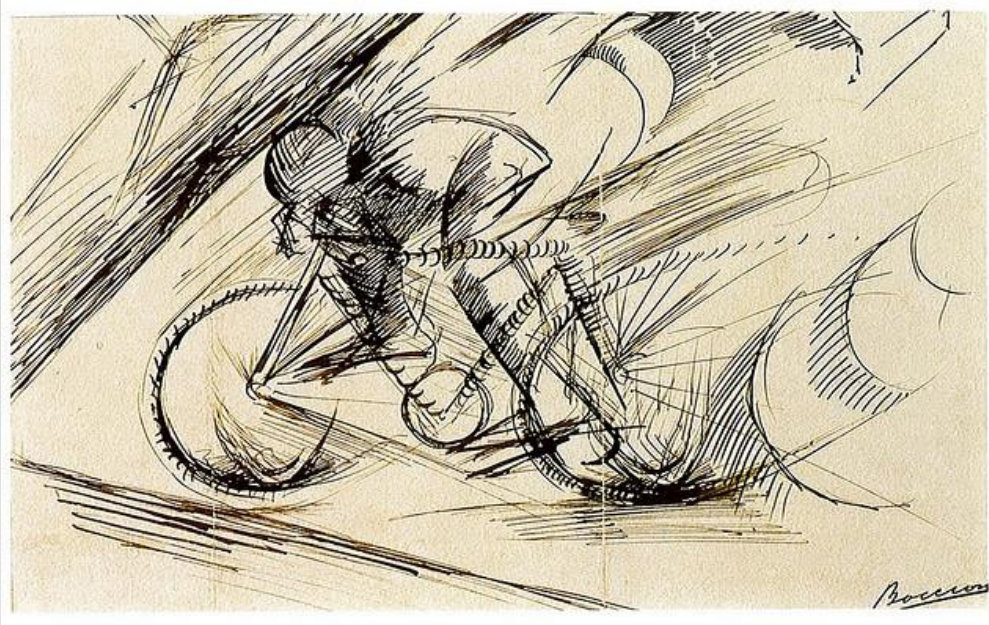
How artists problem-solve



**Dinamismo di
un Ciclista
(Dynamism of a
Cyclist)**

1913

Umberto
Boccioni

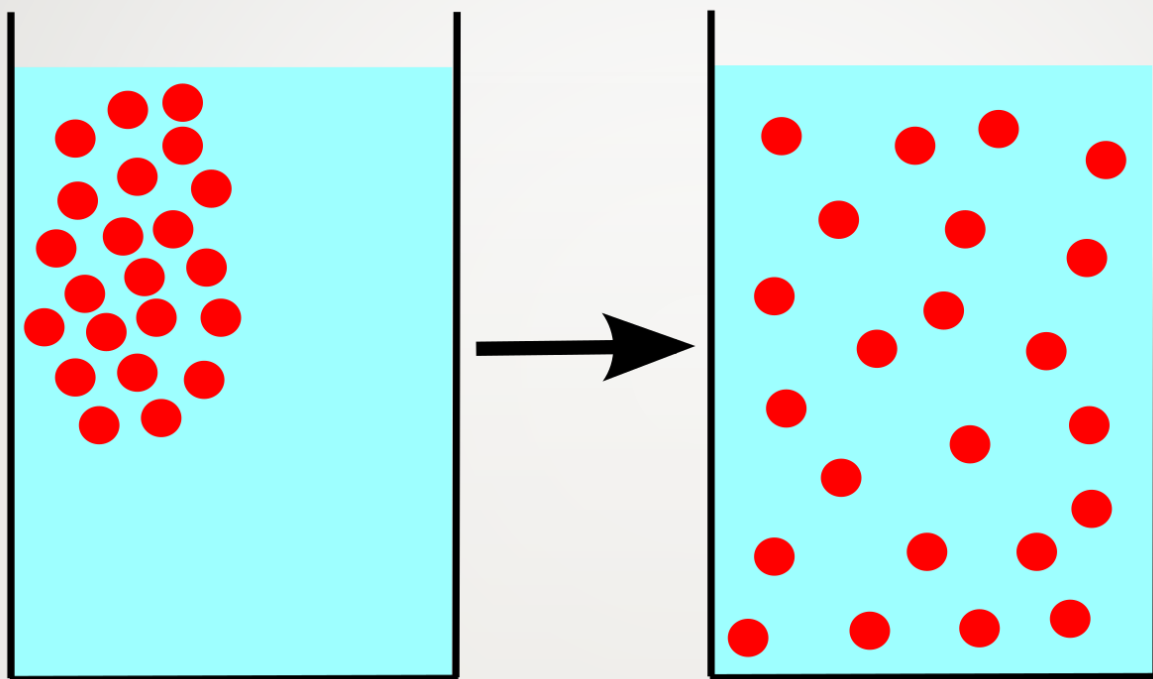


Sketch: [https://en.wikipedia.org/wiki/Dynamism_of_a_Cyclist#/media/File:Umberto Boccioni, Dynamism of a Cyclist \(detail\), 1913.jpg](https://en.wikipedia.org/wiki/Dynamism_of_a_Cyclist#/media/File:Umberto_Boccioni,_Dynamism_of_a_Cyclist_(detail),_1913.jpg)

Final: <https://www.wikiart.org/fr/umberto-boccioni/dynamisme-dun-cycliste-1913>

Connecting better with communities; getting richer data





When planners and artists collaborate...

Planners can:

- Learn more about communities
- Unleash more of their creativity
- Approach risk differently
- Address community issues through arts



Artists can:

- Learn more about how to make things go – or stop
- Grow leadership skills
- Build systems thinking skills
- Make/inspire art that better addresses community issues



Challenges to engaging arts and artists

- Tyranny of custom
- Few connections to levers of influence
- Differing expectations of work, timelines, processes
- Differing comforts with risk



What you can do

- Create opportunities for artists to engage early on
- Be a guide and mentor
- Be open to new ideas
- Help artists with organizational obstacles

Pay the artists!



Questions, comments and answers

- Feel free to write in the chat area, or
- If you want to speak, type:
 - Q for question
 - C for comment
- You will be unmuted (or asked to unmute)



Questions for conversation

- What do you think are the biggest challenges to doing more adaptive planning?
- What are the opportunities?
- What do you want to do to engage in more adaptive planning practice?



To learn more about creative placemaking
www.cpcommunities.org

PROFESSIONAL DEVELOPMENT

- Creative Place podcast
- Webinars and training
- Creative Placemaking Leadership Summit
- Certificate in Creative Placemaking

COMMUNITY-BASED SERVICES

- Community Coaching
- Strategy Lab
- Designing Healthier Places
- Technical assistance



Leonardo Vazquez, AICP/PP
Founding Director, The National
Consortium for Creative Placemaking

Director of Creative Placemaking, New
England College

leo@cpcommunities.org

973-763-6352, x1

www.cpcommunities.org

