

THE VANTAGE POINT



American Planning Association
Pennsylvania Chapter

Making Great Communities Happen

A Publication of the Pennsylvania Chapter of the American Planning Association

2012 PA Chapter of APA



Award Winners

*The Best and Brightest recognized at the
Annual Awards Luncheon in Erie!*

The Pennsylvania Chapter of the American Planning Association (PA Chapter of APA) held its Annual Awards Luncheon in Erie, PA where 320 attendees celebrated the esteemed award winners of this year's highly competitive program. The following individuals and organizations were honored for their excellent contributions to planning in Pennsylvania. Congratulations!

PA Chapter of APA 2012 Annual Conference Recap

Planners Chart a New Course to Erie for Education, Networking and Opportunity

THE PA CHAPTER of APA's first-ever statewide conference in the Northwest wrapped its activities on Tuesday, October 16, 2012. Planners headed out in various ways. There was the road trip for 12 members from the Southeast section who made the trip in a 15-person van. A USAir flight, nearly full with PA APA members along with one main speaker (Mitchell Silver) and outgoing conference manager Sarah Laucks, left Erie's airport at 6:30pm and enjoyed a jovial flight to Philly. Many other planners maximized the trip by extending their travels to include various stops at scenic and historic landmarks along the way.

While the chapter may have faced just a bit of trepidation in taking the annual statewide gathering of planners to the far northwest corner of the state we are pleased to report the conference was a resounding success – exceeding expectations left and right!

CONTINUED ON PAGE 4



Daniel Burnham Award for a Comprehensive Plan

Awarded to Char-West Multi-Municipal Comprehensive Plan

- Char-West Council of Governments
- McKees Rocks Borough
- Neville Township
- Stowe Township

The Char-West Plan is the determined effort of McKees Rocks, Neville, and Stowe to reverse years of economic and population decline and to transform challenges to assets. The plan gives insights in zoning, market analyses, and infrastructure and taps into the area's strong institutions, potential for cooperation, and 16 miles of waterfront. The plan hits hard with a wake-up call of key trends. And it helps local officials and partner organizations zero in on 12 Essential Actions and Places to Grow in each municipality.

Opportunity and Empowerment Award

Awarded to Spring Garden II Scattered Sites

- Philadelphia Housing Authority
- Spring Garden CDC
- Michaels Development

The \$19.3 million Spring Garden II project created 58 affordable housing units by rehab of 22 Philadelphia Housing Authority properties and new construction by the Spring Garden CDC. The authority properties were restored to historic standards and are a show place in the Historic District. Affordable units look no different than market rate units, and the neighborhood is truly mixed income and more safe. Residents benefit from nearby jobs, transit, educational, and cultural opportunities. The project transformed several blight-ridden blocks.

CONTINUED ON PAGE 2



before

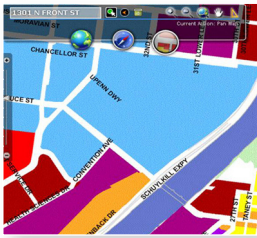


after



Award Winners

CONTINUED FROM PAGE 1



Planning Excellence Award Best Practice

Awarded to Philadelphia Integrated Planning and Zoning Process

- Philadelphia City Planning Commission
- Philadelphia Zoning Code Commission

Philadelphia through 2011-2012 undertook a comprehensive plan, zoning code rewrite, and citizen planner leadership program, and integrated them to achieve the most positive outcomes! The Citizens Planning Institute and its curriculum and results are a model to follow. The adoption of the Citywide Vision part of Philadelphia2035 (comprehensive plan) and enactment of the new city zoning code are major accomplishments that will inspire other cities. Via Philadelphia's planning efforts, community education led to policy reform, policy reform led to innovative regulatory changes, and improved regulations are implementing community visions and plans.

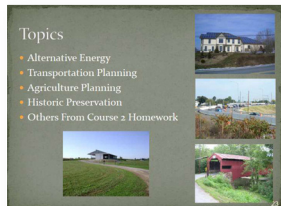


Planning Excellence Award Best Practice

Awarded to Dam Park at Austin: Master Plan & Economic Development Strategies

- Austin Dam Memorial Association
- Austin Borough
- Potter County Visitors Association

The Austin Dam plan was more than a park master plan and economic development strategy. It also helped Austin reflect on its own but lesser-known historic flood tragedy. The plan helped the community realize what it has, the story it can tell, and how to capitalize by promoting the unique history, environment, and culture of days past and present. With limited resources the community has begun re-branding "the whole Dam story", undertaking improvements in the park, and promoting local events and businesses for economic development along Austin's Main Street.



Planning Excellence Award Public Outreach

Awarded to Planning Commission University

- Cumberland County Planning Department

Planning Commission University was created by Cumberland County Planning Department to train local planning commission members, both rookies and veterans. It provides three sessions of basic and advanced instruction on planning commission roles and responsibilities, from why planning is important, to comprehensive plans, subdivision, and zoning, to running a meeting, to emerging issues. And, the course provides a transferrable handbook and CD with electronic copies of planning guides and best practice examples from throughout the county.



Student Project Award

Awarded to Chester Remakes: A Strategic Plan to Green and Grow Chester!

- Temple University Community and Regional Planning Department

Chester Remakes is the work product of the Temple Planning Department's graduate capstone studio course. The student project promotes investing in the city's more traditional spaces: its neighborhoods, its downtown and its places of recreation. Recommendations strive to offset the legacy of environmental degradation in the city and to rejuvenate its ecological and recreational assets and improve community health. The plan rises beyond speculation and whimsy and promotes action, action which is already taking place.

Thanks

THANKS TO THE MEMBERS

of the Awards Committee for the time and hard work they contributed to carefully review all awards submissions, and especially to Denny Puko for spearheading the committee and coordinating and presenting the Awards Program in Erie.

Denny Puko, Chairman
Pennsylvania DCED

Robert M. Behling
South Heidelberg Township Planning Commission

Cindy Campbell
Pennsylvania DCED

Graciela Cavicchia, AICP, PP
The Reinvestment Fund

Deborah Howe, PhD, FAICP
Temple University

Brian O'Leary, AICP
Montgomery County Planning Commission

Brandi Rosselli, AICP
Mackin Engineering

Vaughn Stebbins, AICP
EDMC – South University



Planning Leadership Award – Professional Planner

Awarded to John Woodling, Monroe County Planning Commission

John Woodling has had a stellar 41-year planning career, the last 22 years as director of Monroe County Planning Commission. His strongest accomplishment was the Monroe 2020 county comprehensive plan, completed in 1999, which initiated county-municipal partnerships, open space protection programs, and then innovative smart growth principles now considered commonplace. Monroe 2020 won numerous awards. In John's tenure, 12 of the county's 20 municipalities adopted multimunicipal comprehensive plans, 18 enacted conservation subdivision practices, and 18,000 acres of open space and ag lands were protected.



Planning Leadership Award – Elected Official Planning Advocate

Awarded to Salvatore J. Panto, Jr., Mayor, City of Easton

Mayor Panto, in his fourth term, is credited with rejuvenating Easton. He stabilized a government teetering on bankruptcy despite the worst economy since the Great Depression. His planning-driven and business-friendly approach has resulted in \$400+ million invested in Easton since 2007. Accomplishments under his leadership include the city's new smart development code, pedestrian-oriented road-dieting of downtown arterials, a planned, mixed-income development to replace deteriorated public housing, and transformation of older space into new restaurants, retail stores, and places for recreation, culture, and the arts. Mayor Panto's leadership is replacing neglect and despair with investment and hope.



Planning Leadership Award – Distinguished Service

Awarded to Stanford M. Lembeck, Ph.D., AICP

Stan Lembeck has had a distinguished lifetime of service to planners, local officials, and the practice of planning in Pennsylvania. In 36 years at Penn State University, Stan developed and taught courses in planning and land use, and trained innumerable local elected officials, planning commissioners, zoning board members, civic groups, citizens, and professional planners. He was involved in drafting the Municipalities Planning Code in 1968 and major amendments in 1988 and 2000. He co-founded, chairs, and authored courses for the Pennsylvania Municipal Planning Education Institute, a partnership of PA APA and Penn State Cooperative Extension. He has been active in most aspects of the PA Chapter of APA and its predecessors, recently serving as chair of the MPC Task Force writing the next generation of PA's planning law, and the Required Training Task Force. Stan is a straight talker, a leader, and a doer, and he has been persistently effective in serving Pennsylvania planning and planners.

Certificates of Merit

• Best Practice – Montgomery County Model Ordinance Series

Montgomery County Planning Commission

• Student Project – Complete Streets: A Framework for Northern Lancaster

Temple University Community and Regional Planning Graduate Program

• Elected Official Planning Advocate – Christine Fizzano Cannon, Judge, Court of Common Pleas, Delaware County ♦



PA Chapter of APA 2012 Annual Conference Recap

CONTINUED FROM PAGE 1

KUDOS TO THE local conference planning committee who carefully and thoughtfully worked for more than a year to craft a stellar conference program with many highlights:

4 Main Sessions: From *New York Times* best-selling author **Tony Hiss**, to former planners-turned elected Commissioners **Steve Craig** and **Jack Lynch**, plus **John Elliott's** illumination of how the port city of Erie impacts all of PA, and we wrapped it all up with APA President **Mitchell J. Silver's** national perspective of the future of planning.

40 Concurrent Sessions targeted to provide planners with practical takeaways and featuring a Shale Gas track as well as innovative topics like strategic positioning for planners and a young planners forum.

4 Mobile Workshops exploring the wine industry, complete streets, an active remediation site and a special outing with keynote speaker Tony Hiss.

There were many stand-out moments during the conference:

- The Conference location itself was a star. As **Denny Puko** of DCED put it “The Bayfront Convention Center – the “place” was unique for a PA APA conference. It was so unique it is worth doing again in the not-too-distant future.”
- Chapter **President Brian O’Leary’s** interactive State of the Chapter address, making use of OptionFinder, an interactive audience polling technology, brought to us courtesy of Strategy Solutions, Inc.
- The Welcome Reception at the **Tom Ridge Environmental Center** (we’re still receiving compliments on the food) complete with local wines and beers (thank you **Jake Welsh** and **Charlene Kerr**).
- A popular **Fun Run and Walk** complete with guides and thoughtfully mapped routes.
- The lovely **Sheraton** hotel and the refreshing **Bayfront Convention Center** where we all felt connected to the outside which was easily visible through the exterior walls of glass.

The Chapter is grateful to the planning committee members for their hard work and many contributions to the success of the conference.

We also extend our sincere thanks to the many universities, organizations, and companies for their support of the conference as sponsors, exhibitors, and advertisers. Their contributions help make the conference possible for the more than 320 planners who attended.

Recognition goes out to the raffle subcommittee and the donors who provided almost 30 gift baskets for the annual raffle. Combined with the generous donations made by individual attendees when they registered, the Chapter raised more than \$1,100, all of which will go to the scholarship fund. This money assists students in both undergraduate and graduate planning programs in PA. We appreciate everyone who supported this effort through the purchase of raffle tickets at the conference.



PHOTO BY CLIFF KANZ



PHOTOS BY CHRISTOPHER TOWNLEY
UNLESS OTHERWISE CREDITED.



4 Main Sessions



4 Mobile Workshops

PHOTO BY CLIFF KANZ



PHOTO BY CLIFF KANZ



PHOTO BY CLIFF KANZ



Welcome Reception at the Tom Ridge Environmental Center

"Just wanted to let you know that I very much enjoyed the 2012 APA-PA Annual Conference. There were many good sessions, the Sunday reception was very nice (the location and the food & drinks). I was most impressed with the keynote speakers. Prior to heading back to Pittsburgh, I visited the Erie Metropolitan Transportation Authority transit center, a very nice facility."

David E. Wohlwill, AICP, Manager, Longer-Range Planning Port Authority of Allegheny County

ERIE 2012



*Up to 13.5 CM credits,
including Law and Ethics*



40 Concurrent Sessions



"I want to tell you how impressed we were with the conference. Three of us from the Buffalo area attended and we each were equally impressed with the usefulness of the various topics and the quality of the presentations. Hats off to your Chapter and organizing committee."

**Gary Black, Assistant Planning Director
Town of Amherst Planning Department**

2012 CONFERENCE Committee

The 2012 Annual Conference is the product of many hours of careful planning and work by the local conference committee. Many thanks to the committee members for their efforts during a year of preparation for the conference!

Committee Co-Chairs

Amy McKinney, Lawrence County Planning Department
Jake Welsh, AICP, Erie County Department of Planning

Committee Members

Roy Brant, PhD, Crawford County Planning Commission
Judith Barrett, AICP, Venango County Regional Planning Commission
Jodi Brennan, Clearfield County Planning Commission
Suzanne Gagliardo, Franklin Moving Forward, Inc.
Daniel Glotz, Warren County
Charlene Kerr, AICP, Poggemeyer Design Group
Deborah Lunden, McKean County Planning Commission
Dennis Martinak, AICP, Mackin Engineering Company
John McGranon, County of Erie
Erin Wiley Moyers, MGRP, PA
Department of Transportation
Denny Puko, PA Department of
Community and Economic Development
Joy Ruff, AICP, Marcellus Shale
Coalition
Susan Smith, Northwest Commission

PHOTO BY CLIFF KANZ





PA Chapter of APA 2012 Annual Conference Recap

ERIE2012

Thank you! With deep appreciation, we thank the following Conference sponsors, exhibitors, and advertisers. Their support makes the conference possible. Consider participating in 2013 and connect with the largest gathering of planners in Pennsylvania! Details soon at www.planningpa.org.

SPONSORS

Diamond Sponsors

County of Erie/Erie County
Recycling Program
Indiana University of Pennsylvania
Department of Geography and
Regional Planning

Platinum Sponsors

Marcellus Shale Coalition
Temple University School of Environ-
mental Design, Department of
Community and Regional Planning

Silver Sponsors

Dahlkemper Landscape Architects
& Contractors
Herbert, Rowland & Grubic, Inc.
Johnson, Mirmiran & Thompson, Inc.
Wallace Roberts & Todd
Whitman, Requardt & Associates, LLP

Transportation Sponsor

Erie Metropolitan Transit Authority

Friends

Central Section, PA Chapter of APA
Northeast Section, PA Chapter of APA
Northwest Section, PA Chapter of APA
PennPlanning – Department of City
and Regional Planning, University
of Pennsylvania
Southwest Section, PA Chapter of APA

EXHIBITORS

4Ward Planning LLC
Erie County – Erie County Recycling
Program
Dahlkemper Landscape Architects
& Contractors
Herbert, Rowland & Grubic, Inc.
Environmental Planning &
Design, LLC
Indiana University of Pennsylvania
Department of Geography and
Regional Planning
Johnson, Mirmiran & Thompson, Inc.
Mackin Engineering Company
Marcellus Shale Coalition
Michael Baker Jr., Inc.
Penn State Community and Economic
Development Graduate Program

Pennsylvania Municipal Planning
Education Institute (PMPEI)
Poggemeyer Design Group, Inc.
Strategic Solutions, Inc.
Wallace Roberts & Todd
Whitman, Requardt & Associates, LLP
Temple University, School of Environ-
mental Design, Department of
Community and Regional Planning
URS

ADVERTISERS

4Ward Planning LLC
Dahlkemper Landscape Architects
& Contractors
Darby Borough Community
Development Corporation
Delaware Valley Regional Planning
Commission (DVRPC)
Environmental Planning &
Design, LLC
Erie County – Erie County Recycling
Program
Glackin Thomas Panzak Inc.
Greenhorne & O'Mara
Herbert, Rowland & Grubic, Inc.
Indiana University of Pennsylvania
Department of Geography and
Regional Planning
Johnson, Mirmiran & Thompson, Inc.
Mackin Engineering Company
Marcellus Shale Coalition
McCormick Taylor Inc.
Michael Baker Jr., Inc.
Northwest Commission
Parsons Brinckerhoff, Inc.
Pennrose Properties, LLC
Richard C. Sutter & Associates, Inc.
Seneca Resources Corporation
T&B Planning
Temple University School of Environ-
mental Design Department of
Community and Regional Planning
The Gateway Engineers
Wallace Roberts & Todd
Whitman, Requardt & Associates, LLP
University of Pittsburgh, Graduate
School of Public and International
Affairs (GSPIA)
URS



SUPPORTERS of the Scholarship Fund

Thank you to the following organizations for their donations of gift baskets to the PA APA Raffle

CDM Smith
City of Erie
Clarion County
Crawford County
Delaware County
Downtown North East, Inc.
Environmental Planning & Design, LLC
Fitzkee Candies Inc.
Front Porch Tea Room and Bakery
Hanover, PA & York County Planning Commissions
Hilton Harrisburg (site of the 2013 conference)
IUP, Dept. of Geography & Regional Planning
JMT
Mackin Engineering Company
McKean County
Montgomery County
Nature's Bounty Basket
Richard C. Sutter & Associates, Inc.
Shermer & Associates
The EADS Group
Venango County
Warren County
York County Parks

Thank you to these individuals for their donations to the scholarship fund.

Richard Dellinger
Richard Hoch
Dennis Livrone
Anne Messner
Michael Rimer
David Veights
Kim Wheeler

And the countless others who bought raffle tickets!



RIGHT: Thank you student volunteers from IUP.



The Famous PA APA Scholarship Fundraising Raffle, raising over \$1,100!



PHOTO BY CLIFF KANZ



welcome New Chapter Members!

WE WELCOME THE FOLLOWING NEW MEMBERS who joined the PA Chapter over the past few months. The PA Chapter membership includes nearly 3,000 planning officials, professional planners, and others who care about how Pennsylvania continues to grow the places where we live, work, and enjoy recreation. The board and staff are available to answer any questions. Feel free to contact the Chapter Office at 717-671-4510. Board member contact information is available at www.planningpa.org under **About Us**.

Organizational Members:

County Commissioners Association of Pennsylvania, Central Section
Smart Growth Partnership of Westmoreland County, Southwest Section ♦

Coming this spring!

"Improving Connectivity and System Function through Local Planning"

WORKSHOP

PENNDOT'S NEW handbook on "Improving Connectivity and System Function through Local Planning" provides guidance to municipalities on how to enhance vehicular, bicycle, and pedestrian connectivity. This training offers an overview of the handbook and includes strategies to effectively regulate and manage a connected transportation network within a community including a review of connectivity index calculations and model ordinance language. **Steve Deck, AICP** and **Angela Watson, AICP** will conduct the training. We anticipate awarding 2 CMs.

Watch for an announcement of dates and locations on the APA-PA website, and through our email blasts. ♦

Innovative Planning

Gannett Fleming

Excellence Delivered *As Promised*

800.233.1055

www.gannettfleming.com • Offices Worldwide



INSIDER

A Message from President **Brian O'Leary, AICP**

Hello Fellow Planners. For those of you who didn't make it out to Erie, we had a great conference – it was educational, invigorating, and, most importantly, fun. The city of Erie is full of interesting buildings and places, and the conference center's location on the waterfront can't be beat. Kudos to the Northwest Section and everyone who helped bring about this great success.



American Planning Association
Pennsylvania Chapter

Making Great Communities Happen

587 James Drive
Harrisburg, PA 17112
717 671-4510 (P)
717 545-9247 (F)
www.planningpa.org

Susan Shermer, CMP
Administrative Director
sshermer@shermer-assoc.com

The Vantage Point is published four times a year by the Pennsylvania Chapter of the American Planning Association and is available at www.planningpa.org. Material may be reprinted provided *The Vantage Point* is credited. The views expressed in *The Vantage Point* are not necessarily those of the PA Chapter of APA. Send comments and subscription requests to Susan Shermer, CMP at 717-671-4510 or sshermer@shermer-assoc.com.

The Vantage Point is printed on Roland Opaque30 Smooth Bright White 70# and contains FSC certified 50% post-consumer fiber. The paper is EcoLogo and FSC Mixed Sources certified and is manufactured using renewable biogas energy. Roland papers are produced by Cascades, an environmentally friendly company whose paper production practices saves 30 million trees a year. Inclusion in this newsletter of ads does not imply endorsement by PA APA.



Please help us close the loop and recycle this newsletter.

DURING THE President's Address, I had a chance to use an automatic polling tool provided by **Debbie Thompson of Strategy Solutions, Inc.** This system gave immediate feedback on a few questions about our chapter. We only had one technical difficulty, when the results seemed to erroneously say that the Pittsburgh Steelers were a more popular team than the Philadelphia Eagles. Maybe we'll try it again in 2014 to see if this glitch remains.

There were three serious questions answered by approximately 170 people, and here are the results, on a 1 to 5 scale, with 5 being the best:

Question 1: How valuable are the following PA Chapter products and services?

(Item/Average Score)
Chapter website/3.2
Annual conference/4.2
Chapter sponsored training events/3.5
AICP training/3.2
Advocacy work on legislation and policy/3.3
Vantage Point newsletter/3.3
Job postings/3
Our scholarships/3.5
Section social and training events/3.2
E-mail news/3.5

Overall, the annual conference was rated as the most valuable chapter service, and planning consultants and elected officials felt this was true even more than the group as a whole.

Question 2: The Chapter has limited resources and wants to make the most effective use of these resources. How important do you feel that each of the following is to the future of the chapter/ membership?

(Item/Average Score)
Hiring a firm to track legislation/3.4
Increasing participation of students and emerging professionals/4
Providing more training at the Chapter level/3.8
Holding more events and training at the Section level/4.1
Advocating for professional planners with local municipalities/4
Populating the website with best practices' documents and links/4.1
Taking stands on policy issues and lobbying for better planning/4.1
Reaching out to and collaborating more with allied organizations around the state/4
Organizing retired planners/2.9
Increasing our membership and financial resources/3.8

A lot of actions ranked high,

although more Section events, best practices on the website, and taking policy stands scored the highest. Among government planners, populating the website scored highest; among planning consultants, taking stands on policy was the highest; among non-profit planners, holding more Section events was most important; and among allied professionals, increasing student and emerging planner participation was most important.

Question 3: How important are each of the following issues for planners to address over the upcoming years?

(Item/Average Score)
Sprawling development/3.6
Urban revitalization/4.5
Open space preservation/4
Housing affordability/3.5
Economic development/4.1
Transportation funding/4
Reinventing suburban areas/3
Natural gas and other resource extraction/4
Aging of the population/3.5
The role of government/3.5
Environmental changes/3.6

Urban revitalization was, by far, considered the most important.

The Chapter board will be taking these results and using them to guide us as we move forward. If you have thoughts about our priorities, please let us know by emailing info@planningpa.org or boleary@montcopa.org.

Keep up the great planning work and advocating for a better future. ♦

Vantage Point 2013 Editorial Deadlines

Spring Issue
Summer Issue
Fall Issue
Winter 2013-2014 issue

February 15
May 17
August 19
November 15



Central Section Update

by *Rachelle A. Abbott, AICP,*
Section Chair

A Busy Fall for the Central Section

The Central Section has had a very busy Fall! Many Central Section Members headed to Erie to enjoy the Pennsylvania Chapter Annual Conference. It was wonderful to experience Erie and hear about all the interesting revitalization efforts happening there. Planners across the Commonwealth should mark their calendars for next year's conference to be held at the Harrisburg Hilton.

The Central Section held its annual Fall Workshop on October 26, 2012 at Pennsylvania State Association Township Supervisors (PSATS) Office in

Enola, Pennsylvania. The workshop titled, **Guideposts for Decision Making: Ethics and Land Use Law** was approved for 5.25 CM credits. Thirty eight planners attended the workshop, which included the morning law session provided by Susan J. Smith, Esquire, and the afternoon ethics session presented by Dr. Steven Gimbel from Gettysburg College, Mark Stivers, AICP, and Andrew Stern, AICP. The workshop was very well received, both educational and entertaining.

The other event held this Fall was the **Irv Hand Schmooze Event**. The Central Section brought back the opportunity for planners to discuss and learn planning history from one of the founding fathers of planning in Pennsylvania, Irv Hand. The

eighteen planners in attendance enjoyed a delicious dinner at The Colonial Country Club in Harrisburg followed by thought-provoking discussions. Irv Hand, FAICP was the "Shmoozer-In-Chief," while Stan Lembeck, AICP, was the "Traffic-Controller". Many planning lessons were shared including the importance of Capital Improvement Programs and of planners becoming more visible on the local, state, and federal levels. Discussions about the State Planning Board, planning implementation, and, of course, the MPC, were lively and laid the foundation for future dialogue. The evening was very special with personal and professional stories being told by many. "Planning is a team sport and my number one teammate was Mildred," Irv said before he requested that the next event similar in nature be called The Mildred & Irv Hand Schmooze Session. In closing, Irv Hand stated, "he is not done yet" and challenged all planners to be prepared for the "steep hill that planning has to climb to receive the recognition it deserves on the local, state, and federal levels." Hope to see you all at the next Mildred & Irv Hand Schmooze Session to continue the discussion. ♦



The eighteen planners in attendance at the "Irv Hand Schmooze Event" enjoyed a delicious dinner at The Colonial Country Club in Harrisburg followed by thought-provoking discussions. Irv Hand, FAICP was the "Shmoozer-In-Chief," while Stan Lembeck, AICP, was the "Traffic-Controller."

PA Chapter

Executive Committee

PRESIDENT

Brian O'Leary, AICP

Montgomery County Planning Commission

VICE PRESIDENT

John Pickett, AICP, PE

Delaware County Planning Department

SECRETARY

James Cowhey, AICP

Lancaster County Planning Commission

TREASURER

Pam Shellenberger, AICP

York County Planning Commission

LEHIGH VALLEY SECTION REPRESENTATIVE

Sara Pandl, AICP/RLA

Lower Macungie Township

NORTHEAST SECTION REPRESENTATIVE

Peter T. Wulforth, AICP

Penn State Cooperative Extension

NORTHWEST SECTION REPRESENTATIVE

Roy Brant, PhD

Crawford County Planning Commission

PAST PRESIDENT

Alexander J. Graziani, AICP

City of Latrobe

Section Chairs

Central

Rachelle Abbott, AICP

STEP, Inc.

Lehigh Valley

Sara Pandl, AICP/RLA

Lower Macungie Township

Northeast

Steve Pitoniak

Lackawanna County Planning

Northwest

Roy Brant, PhD

Crawford County Planning Commission

Southeast

Martha Cross, AICP, PP, LEED AP

The Reinvestment Fund – Development Partners

Southwest

Jim Segedy, PhD, FAICP

PA Environmental Council

Committee Chairs

Professional Development

Officer/Professional Development

Committee Chair

Susan Elks, AICP

Planning Officials Development

Officer/Chair of the Planning Officials

Development Committee

vacant

Communications Committee Chair

Dennis Martinak, AICP

Education Committee Chair

Cliff Kanz, AICP

2012 Conference Co-Chairs

Amy McKinney

Jake Welsh, AICP

Legislative Committee

Kyle Guie, Chair

Susan Smith, Esq., AICP, Vice Chair

Contact information is available at www.planningpa.org under "About Us".

PDO *corner*

by Susan Elks, AICP, Professional Development Officer

CALL FOR WEBCASTS!

APA-PA is a member of the Planning Webcast Series, a co-op comprised of APA Chapters and Divisions that provides free webcasts to a national audience. The Series is currently soliciting topics for the 2013 calendar year. If you or your organization have a topic that can reach a national audience (i.e., Mobile Populations; Strategies for Aging Communities; Public Art), please contact me at selks@chesco.org. The sessions need to be 90 minutes and the level of content must be appropriate to receive Certification Maintenance credits.

Regarding the Planning Webcast Series, it has recently moved past sessions onto **YouTube** to improve viewing. For 2013, some sessions have already been scheduled. Please check the **Utah Chapter website** for the most current schedule of upcoming sessions. To check for in-person training throughout Pennsylvania and nearby, visit the newly redesigned **PA Chapter website**.

AICP Exam Update Coming in 2013

If you have been thinking about taking the AICP exam, there will be one more opportunity to test under the current test format. The May 2013 testing cycle will be the same pool of test questions that APA has used for the past few years. The November 2013 testing cycle will have an updated pool of test questions, and possibly other changes. The application window for the May 2013 testing cycle opens December 4th. The early bird application deadline is December 18th and the regular deadline is January 29th. Full details on the application process can be found on the **APA exam webpage**, and exam prep resources (look for the PA Chapter in-person session in late February/early March!) are identified on the **PA Chapter exam webpage**. Information on changes to the exam will be posted to both websites as it becomes available. ♦

New eLibrary for municipal land use documents

PENNSYLVANIA HAS A NEW and improved land use eLibrary. The on-line resource for planning and land use documents throughout the state has been modernized and made easier to use. And, it has moved to a new location on the web.

The eLibrary is a cooperative project of the Pennsylvania Department of Community and Economic Development (DCED) and the County Commissioners Association of Pennsylvania (CCAP). The eLibrary provides ready on-line access to comprehensive plans, zoning ordinances, and subdivision and land development ordinances for Pennsylvania counties, cities, boroughs, and townships. Document links or files are provided by local governments for posting on the eLibrary.

CCAP designed and created the new eLibrary website. The new URL is <http://elibrary.pacounties.org>. Please bookmark the new address. The old address will stop redirecting users on January 1, 2013.

Local governments are encouraged to check their listing on the new eLibrary. If the current comprehensive plan, zoning ordinance, and/or subdivision and land development ordinance are not posted, please contact CCAP, Jim Shellenberger, jshellenberger@pacounties.org, 717-526-1010 x3351. ♦

2013 AICP exam fee *partial scholarships*

THE PA CHAPTER of the American Planning Association will award two (2) partial scholarships for the 2013 AICP Exam testing cycles. The scholarship reduces the exam fee from \$495 to \$135 for first time AICP applicants and from \$425 to \$65 for previously approved AICP applicants.

Financial hardship is the primary consideration for the scholarship. Members of ethnic or racial minorities shall be given preference for the scholarship. Test applicants whose employer subsidizes the exam fee are excluded from consideration.

Applications must be submitted by 4:00 p.m. Friday, January 18, 2013 for consideration. ♦
See website for application. <http://planningpa.org/for-planners/professional-planners/aicp-exam-prep/>



Thank you Sarah, *Hello Keith!*

WE EXTEND OUR final thanks to **Sarah Galbraith Laucks**, who served as Chapter Administrator until February of this year, and then continued on in a limited capacity as our conference manager through the fall conference. We wish Sarah the best of luck as she pursues her work of advocating for the disability community through conferences and expositions.

You may have noticed a tall blond guy shadowing Sarah on Sunday or Monday in Erie. The guy was **Keith McNally!** Keith is the new conference manager for the Chapter. He is looking forward to starting conference planning shortly with the Central Section. Keith says he is a self-confessed control freak whose 20+ years in the association arena has prepared him well for his duties. He has worked on both the hotel and association side of event coordination, and is a member of several professional associations. **Susan Shermer, CMP** continues on as Chapter Administrator, and **Kim Gusic** continues on as an administrative associate. ♦

AGING, **LIVABLE** COMMUNITIES & *Economic Demands*

by Ramona Mullahey, Member–Divisions Council/Chapter Presidents Council Task Force on Collaboration, Divisions Council Initiative on Aging & Livable Communities

The U.S. is undergoing a demographic transformation. On January 1, 2011, the very first Baby Boomers born between January 1, 1946 and December 31, 1964, turned 65.

FURTHER, THE PEW Research Center has projected that about 10,000 people “will cross that threshold” every day over the next 19 years. By 2030, the 65 and older population will have grown to 18 percent. By 2050, 20 percent of Americans will be 65 or older, an increase of 120 percent from 40 million to over 88 million.

As today’s population live longer, the cost of healthcare rises, dramatically increasing demands on entitlement programs such as social security and Medicare. Those two factors are going to make it incredibly challenging to address the needs of retiring Baby Boomers, especially as many of them have no intention of ceding their independence and their youthful perspective towards life.

This means that the 79 million baby boomers, about 26 percent of this country’s population, will be redefining what it means to be older. Boomers will work longer and demand that community infrastructure be more responsive to their needs as those who “age in place.” This will further increase economic demands on communities, not to mention the Federal Government through various transportation programs. Older adults require access to services, a range of housing types and transportation options for active living in the community. According to AARP <http://assets.aarp.org/rgcenter/ppi/liv-com/aging-in-place-2011-full.pdf>, unsupportive commu-

nity design, unaffordable and inaccessible housing, and a lack of access to needed services are barriers to the desire of older adults to live in their own homes and to thrive in their communities.

Progress is being made in more than 300 age-friendly/livable community initiatives underway nationwide based on age-friendly models from organizations such as the World Health Organization, AARP and U.S. Environmental Protection Agency. Innovative partnerships are forming among government agencies, businesses, social service providers, aging experts, and grassroots advocacy groups to brainstorm how to make their

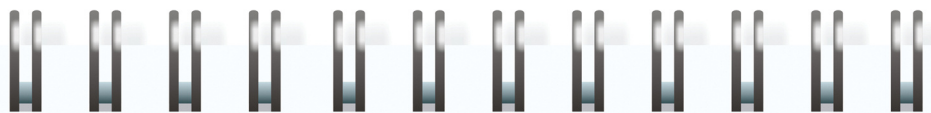
city or town age-friendly. Further, the lifetime associations and connections rooted in place can be pivotal to successful aging. However, making cities more age-friendly can be daunting. Most experts agree that many communities have not planned for the aging boomers. Fiscal constraints are pushing some communities to cut spending on critically needed programs and services.

On the radar and see yourself in a division

The APA Aging of America Initiative provides an extraordinary opportunity for planners. Join the conversation. Visit the APA Aging and Livable Com-

munities Initiative online at: <http://www.planning.org/leadership/divisions/initiatives/aging/index.htm>. Also, contact the DC/CPC Task Force or Noel Comeaux (noel.comeaux@dot.gov) to get involved with this and other division initiatives.

Further, Ramona Mullahey is Past-Chair of the Private Practice Division. For more information on this and the other 20 divisions, please go to <http://www.planning.org/divisions/>. Division membership is a great way to participate in APA as well as to network with planners involved in your area of expertise and to network nationally and internationally. ♦



planner notes...

Kirk Stoner, AICP confirmed as State Planning Board Member

On June 13 of this year, **Kirk Stoner, AICP** Director of Planning for Cumberland County, was confirmed by the Senate to serve as a member of the State Planning Board. Our presence on this Board helps to demonstrate the value of planning in Pennsylvania! Kirk asks that if fellow members of APA-PA want to share thoughts or weigh in on specific issues, he would welcome the input. Kirk can be reached at 717-240-5381 or kstoner@ccpa.net ♦



Making Great Communities Happen

587 James Drive
Harrisburg, PA 17112

logon
www.planningpa.org

Non Profit Org.
U.S. Postage
PAID
Harrisburg, PA
Permit No. 561



listen up!

Land Use Webinar Series

by Peter Wulfhorst

For registration information, please contact Extension Educator
Peter Wulfhorst at 570-296-3400 or e-mail at ptw3@psu.edu

PENN STATE EXTENSION will be conducting a Land Use Webinar series starting in January 2013. The initial webinars will occur on the 3rd Wednesday from January – May 2013. In order to provide flexible live viewing opportunities, similar sessions will be conducted twice on their delivery dates. The first session will be from 12 noon – 1 pm and the second from 7-8 pm. Recordings of webinars will also be made available to registrants. The cost of the series is \$25 for all 5 webinars. A second series of land use webinars will be offered from July – November. Registration information can be found at <http://agsci.psu.edu/land-use-webinar>

The topics to be covered in the first webinar series include:

Planning in PA: Land Use, Communities & Beyond – January 16, 2013

Speakers – Shawn McLaughlin & Neal Fogle

How Preemption of Zoning & other land use controls impacts planning – February 20, 2013

Speaker – Charles Courtney

Renewable Energy Implementation and Land Use Regulations – Is there conflict? – March 20, 2013

Speaker – Ed Johnstonbaugh

Developing More Effective Citizen Engagement: A How To Guide for Community Leaders – April 17, 2013

Speaker – Walt Whitmer

Low Impact Development and Smart Growth: How are they best integrated and utilized in our communities? – May 15, 2013 – Speakers – Peter Wulfhorst & John Turak ♦