



Promoting
a Culture of
Planning

THE VANTAGE POINT



American Planning Association
Pennsylvania Chapter

Making Great Communities Happen

A Publication of the Pennsylvania Chapter of the American Planning Association



PA Chapter of APA 2011 Annual Conference Rewind

CELEBRATING THE STRENGTH

of PA's planning community

With two receptions at Scranton Landmarks—the Historic Radisson Lackawanna Station Hotel and the Electric City Trolley Museum—as well as compelling main sessions, the 2011 Annual Conference offered attendees many opportunities to learn, share, sharpen skills, build relationships, and pursue professional development.

THE PA CHAPTER IS GRATEFUL to the conference planning committee for their many contributions to the success of the event including selecting what attendees have roundly acclaimed as an **outstanding group of main session speakers** and a slate of **workshops featuring 50 sessions and mobiles**. The committee also coordinated two terrific receptions and logistics support for the event.

We also extend our sincere thanks to the many universities, organizations, and companies for their support of the conference as sponsors, exhibitors, and advertisers. Their contributions help make the conference possible for the **400 planners** who attended.

Recognition goes out to the **Raffle Subcommittee and the donors** they coordinated to provide 20+ gift baskets for the annual raffle. Combined with the **generous donations** made by individual attendees when they registered, the Chapter raised more than \$1,000, all of which will go to the **Scholarship Fund**. This money assists students in both undergraduate and graduate planning programs in PA. We appreciate everyone who supported this effort through the purchase of raffle tickets at the conference.

CONTINUED ON PAGE 2

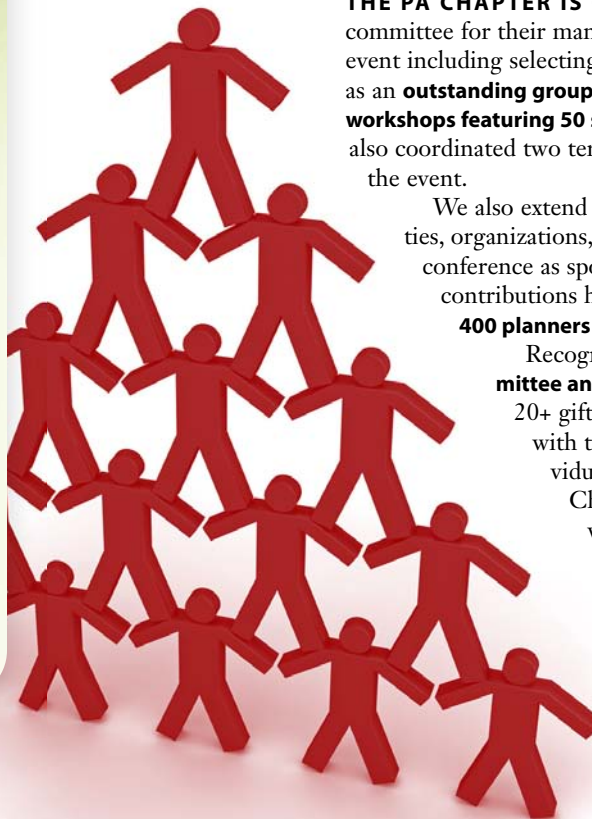
CONFERENCE
BY THE
NUMBERS

ALMOST
400
TOTAL
ATTENDEES

46
WORKSHOPS

4
MOBILE
WORKSHOPS

20
EXHIBITORS



CELEBRATING THE STRENGTH *of PA's planning community*

With deep appreciation, we thank the following Conference Sponsors, Exhibitors, and Advertisers. Their support makes the conference possible:

Sponsors

Platinum Sponsors

Indiana University of PA
Temple University School of Environmental Design, Department of Community & Regional Planning
URS Corporation

Gold Sponsor

Whitman, Requardt & Associates, LLP

Silver Sponsors

4Ward Planning LLC
AECOM
Gannett Fleming, Inc.
Herbert, Rowland & Grubic, Inc.
J.P. Mascaro & Sons
Johnson, Mirmiran & Thompson, Inc.
McCormick Taylor, Inc.
Penn Planning
Scranton Area Foundation
Southeast Section, PA Chapter of APA

Friends

Central Section, PA Chapter of APA
Northeast Section, PA Chapter of APA

To become a sponsor or exhibitor, or to advertise at the 2012 Annual Conference, please contact the PA Chapter of APA office at 717-671-4510.

Exhibitors

4Ward Planning LLC
Environmental Planning & Design, LLC
Indiana University of Pennsylvania
Johnson, Mirmiran & Thompson, Inc.
Maser Consulting
Mohegun Sun
Northeastern Pennsylvania Alliance
PA Land Trust Association
Parsons Brinkerhoff
Planning Officials Development Committee
PMPEI
Temple University School of Environmental Design, Department of Community & Regional Planning
URS Corporation
Wallace Roberts & Todd, LLC
West Chester University
Whitman, Requardt & Associates, LLP

Advertisers

4Ward Planning LLC
AECOM
Babst Calland
Darby Borough Community Development Corporation
Gannett Fleming, Inc.
Herbert, Rowland & Grubic, Inc.
Indiana University of Pennsylvania
J.P. Mascaro & Sons
Johnson, Mirmiran & Thompson, Inc.
Lefèvre Community Preservation
McCormick Taylor, Inc.
Mohegan Sun at Pocono Downs
PA Association of Zoning Officials
Parsons Brinkerhoff
Pashek Associates, LTD.
Penn Planning
Pennrose Properties, LLC
R.K.R. Hess Associates, Inc.
Scranton Area Foundation
Temple University
University of Pittsburgh-GSPIA
URS Corporation
Visit Erie
Whitman, Requardt & Associates, LLP

Supporters of the Scholarship Fund

Thank you to the following organizations donated gift baskets to the PA APA Raffle:

Chester County Planning Commission
Clarion County Planning Commission
County of Venango
Delaware County Planning Department
The EADS Group
Erie 2012
Hilton Scranton
Howard Grossman
Johnson, Mirmiran & Thompson (JMT)
Lackawanna County Visitors Center
Lackawanna Heritage Valley
Luzerne County
Montgomery County Planning Commission
Pike County Planning
Shermer & Associates
Visit Erie/Erie County
Yankees Scranton/Wilkes-Barre
York County Planning Commission

Thank you to the following individuals for their donations to the Scholarship Fund:

Robert Begg	Dennis Livrone
Mark Brown	Allysha Lorber
Richard Dellinger	Teddy Mahoney
Walter Evans	George Pomeroy
Toby Fauver	Michael Rimer
Richard Heimbach	Jerry Walls
Richard Hoch	Derek Williams

2011 CONFERENCE COMMITTEE

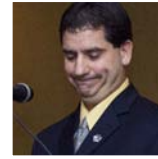
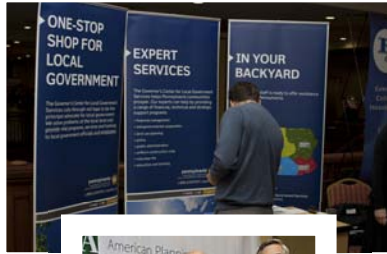
The 2011 Annual Conference is the product of many hours of careful planning and work by the local conference committee. Many thanks to the committee members for their efforts during a year of preparation for the event!

Committee Co-Chairs:

Howard Grossman, AICP, Jewish Family Service
Janet Sweeney, PA Environmental Council

Committee:

Judy Borger, Carbon County Office of Planning and Development
Marvin Brotter, AICP, Brotter Consulting Services
Cindy Campbell, Department of Community and Economic Development
Edward Coar, Wayne County Planning Commission
Sally Corrigan, Pike County Office of Community Planning
Dennis DeMara, Department of Conservation and Natural Resources
Christine Dettore, Monroe County Planning Commission
Mary Liz Donato, Lackawanna County Planning Commission
Tim Ference, Conyngham Borough Planning Commission
Ellen Ferretti, Department of Conservation and Natural Resources
Jamie Keener, AICP, HRG
Bob Pitcavage, Department of Environmental Protection
Steve Pitoniak, Lackawanna County Planning Commission
Michelle Schasberger, Wyoming Valley Wellness Trails Partnership
Robert Templeton, Susquehanna County Department of Planning and Development
Paul Weilage, Wyoming County Planning Commission
John Woodling, Monroe County Planning Commission
Peter Wulforst, AICP, Penn State Cooperative Extension
Sarah Galbraith Laucks, CMP, PA Chapter of APA Chapter Administrator



PA Chapter of APA 2011 Annual Conference Rewind





Farewell. It is with sincere gratitude that I submit to you my final *Vantage Point* President's column. It has been an honor to serve the noble profession of planning.

With pending legislation in Harrisburg looking to enact statewide model zoning code language to handle **Marcellus Shale** their efforts and all of us who represent the membership of the Pennsylvania Chapter of the American Planning Association will need to be sure that the voice of planning is heard.

The top priority of our Chapter Development Plan (2011-2014) "**Promoting a Culture of Planning**" is that we will "Promote good planning practice and the "Culture of Planning" throughout the Commonwealth." One of the best ways we can do this as individuals is to take time to meet with our legislators to educate them on the value of planning for economic prosperity and the quality of life of our communities.

Finally, my charge to the leadership is to remember the past, be true to our ethical standards and be hopeful about the future. Dedication to others has its own reward. A job well-done is worth the effort.

As always thanks for taking the time to read this article and if you ever have an issue that you feel needs my attention please email me at agraziani@cityoflatrobe.com. ♦



American Planning Association
Pennsylvania Chapter

Making Great Communities Happen

587 James Drive
Harrisburg, PA 17112
717 671-4510 (P)
717 545-9247 (F)
www.planningpa.org

Susan Shermer, CMP
Administrative Director
sshermer@shermer-assoc.com

Sarah Galbraith Laucks, CMP
Chapter Administrator
sgalbraith@shermer-assoc.com

The Vantage Point is published six times a year by the Pennsylvania Chapter of the American Planning Association and is available at www.planningpa.org. Material may be reprinted provided *The Vantage Point* is credited. The views expressed in *The Vantage Point* are not necessarily those of the PA Chapter of APA. Send comments and subscription requests to Sarah Galbraith Laucks, CMP at 717-671-4510 or sgalbraith@shermer-assoc.com.

The Vantage Point is printed on Roland Opaque30 Smooth Bright White 70# and contains FSC certified 50% post-consumer fiber. The paper is EcoLogo and FSC Mixed Sources certified and is manufactured using renewable biogas energy. Roland papers are produced by Cascades, an environmentally friendly company whose paper production practices saves 30 million trees a year. Inclusion in this newsletter of ads does not imply endorsement by PA APA.



Please help us close the loop and recycle this newsletter.

FOR ME THIS JOURNEY of Chapter leadership began as a volunteer for a Chapter annual conference in State College chaired by **Dr. Stan Lembeck, AICP** and **Jon Eich, AICP**. Their encouragement as well as support from so many others including **Jerry Walls, AICP; Anna Brienich, AICP; Ron Bednar, AICP; Denny Puko; Carl Hess, AICP; Richard Bickel, FAICP; Maurice Waltz;** and **Tom Grainey** helped me to pursue leadership opportunities. I wish space would allow me the opportunity to name many others who have been of great help to me personally and continue to impress me with their dedication to our profession and the Chapter.

It has been 10 years since I joined the Executive Committee and it has been a privilege to witness so many dedicated volunteers. My challenge to those

who are not active in the Chapter is to step up and get involved in the Chapter. You will grow personally and professionally.

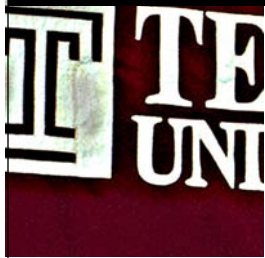
Dedication to our profession was on display in Scranton at our **2011 Annual Conference** this past October. It was a great conference with outstanding sessions, a worthy venue and good attendance. My thanks go to the committee, staff and to those of you who were able to attend. Erie 2012 (October 14-16) has a tough act to follow.

One goal of every leader is to be sure to be followed by people better than themselves. That will be true of your new Chapter leadership for 2012-13. **Brian O'Leary, AICP; John Pickett, AICP; James Cowhey, AICP** and **Pam Shellenberger, AICP** are experienced and anxious to serve our Chapter well.



Mission Statement

The Pennsylvania Chapter of the American Planning Association provides leadership in the development of vital communities by advocating excellence in community planning through education, empowerment, partnership, and public policy.



A wonderful announcement! *An odd situation.*

The PA Chapter is pleased to report that Temple University's MS in Community and Regional Planning has been accredited by the Planning Accreditation Board (PAB). As we noted at the state conference in Scranton, this wonderful announcement is tempered by an odd situation — **the PAB specifically excluded the program's offerings in Harrisburg from accreditation.**

THE RATIONALE for this decision was the lack of criteria for evaluating the video conferencing format used to provide direct access to faculty based at the university's Ambler campus.

Temple challenged this action in that the PAB knew in advance of the fall 2010 site visit that the program had a presence in Harrisburg. Furthermore, Harrisburg students take the same courses that are offered at the now accredited Ambler-based program and many students split their time between the two campuses.

The PAB subsequently changed the rules distinguishing between primary and secondary campuses and requiring a site visit to the secondary campus. In early November, a new site visit team conducted an abbreviated site visit at Temple's Harrisburg campus.

Now we need to wait until the PAB meets during the national APA conference in April. At that time they will make a decision about Harrisburg with a favorable outcome retroactive to the initial accreditation decision.

We are all hoping for a more positive response. Meanwhile, the chapter stands ready to provide support to a program that is seeking to provide cutting edge access to professional planning education. The chapter has long sought to expand the availability of accredited planning programs in Pennsylvania and to that end we express our congratulations and appreciation to Temple University for their accomplishments and on-going efforts on our collective behalf. ♦

EVENTS & training opportunities

April 14-17, 2012

APA National Planning Conference in Los Angeles

February 16, 2012: Early conference registration ends.

March 15, 2012: Pre-registration ends. Hotel reservation deadline. Exhibitor applications due. Last day for refunds or exchanges.

Visit www.planning.org for additional information.

May 24, 2012

Pittsburgh Community Reinvestment Group Community Development Summit

Omni William Penn Hotel, Pittsburgh, PA

Call for Presentations due December 31, 2011.

To submit a proposal and for more information about the event, visit www.pcr.org/conference.

October 14-16, 2012

2012 PA Chapter of APA Annual Conference

Bayfront Convention Center & Sheraton Erie

Visit www.planningpa.org for hotel and conference fees.

Full conference details to be announced in July 2012. ♦

PA Chapter

Executive Committee

PRESIDENT

Alexander J. Graziani, AICP
Smart Growth Partnership

VICE PRESIDENT

Charnelle Hicks, AICP, PP
CHPlanning, Ltd.

SECRETARY/INTERIM TREASURER

John Pickett, AICP, PE
Delaware County Planning Department

CENTRAL SECTION REPRESENTATIVE

Tara Hitchens, AICP
Lancaster County Planning Department

LEHIGH VALLEY SECTION REPRESENTATIVE

Anthony P. Toth, AICP
Professional Planner

NORTHEAST SECTION REPRESENTATIVE

Peter T. Wulfhorst, AICP
Penn State Cooperative Extension

NORTHWEST SECTION REPRESENTATIVE

Roy Brant, PhD
Crawford County Planning Commission

PAST PRESIDENT

Carl Hess, AICP
Borough of State College

Section Chairs

Central

Tara Hitchens, AICP
Lancaster County Planning Commission

Lehigh Valley

Anthony Toth, AICP
Professional Planner

Northeast

Christine Dettore
Monroe County Planning Commission

Northwest

Roy Brant, PhD
Crawford County Planning Commission

Southeast

Graciela Cavicchia, AICP
The Reinvestment Fund

Southwest

Jim Segedy, PhD, FAICP
PA Environmental Council

Committee Chairs

Professional Development Officer/Professional Development Committee Chair

Susan Elks, AICP

Planning Officials Development Officer/Chair of the Planning Officials Development Committee

To be determined

Communications Committee Chair

Dennis Martinak, AICP

Education Committee Chair

Cliff Kanz, AICP

2012 Conference Co-Chairs

Amy McKinney
Jake Welsh, AICP

Legislative Committee

Shannon Debes, AICP, Chair
Susan Smith, Esq., AICP, Vice Chair

Contact information is available at www.planningpa.org under "About Us".



“I was there very early in the game and I was happy to see what was coming. I had a marvelous job and enjoyed it immensely. I’d like to see this generation have that opportunity.”

— Arthur F. Loeben on the potential of Temple’s Community and Regional Planning program

IN MEMORIAM

Arthur Loeben:

Remembering the “patron saint” of Community and Regional Planning

by James Duffy, Temple University

If you’ve efficiently traveled from one location to another in the Philadelphia region; if you’ve enjoyed an unbroken stretch of beautiful open space, chances are you have Arthur F. Loeben to thank for it.

WITH 38 YEARS as the Director of the Montgomery County Planning Commission, Loeben was a giant in the planning field. Many of his ideas were epic in scope, their impact far-reaching and always developed in the interest of helping make the lives of citizens in the region a little better.

On Tuesday, October 18, the planning community lost an elder statesman, friend and mentor. Temple University Ambler, and in particular the Community and Regional Planning program, lost a

staunch advocate and champion. Loeben passed away at the age of 92.

“It is difficult to comprehend Art Loeben’s passing — he was so full of vitality that we were convinced he would live forever. His military service gave him an international perspective, but his nearly four decades at the helm of the Montgomery County Planning Commission reflected his profound commitment to one place, our place, metropolitan Philadelphia,” said Dr. Deborah Howe, FAICP, Chair of the Department of Community and Regional Planning. **“His legacy is reflected** in the transit system, the road network, land use planning and the preservation of open space. His legacy can also be seen in the students who have benefited through his endowed scholarships at Temple University and Montgomery County Community College.”

Beyond his unwavering sup-

port for the Community and Regional Planning program and Ambler Campus in general, the loss of Loeben will be keenly felt by the people who knew him inside and outside of the profession, said Howe, who considers Loeben the **“patron saint of the Community and Regional Planning program.”**

“He was the consummate planning professional, inspiring generations of young planners to follow in his path,” she said. “He showed us how to live life to its fullest, still traveling the world at age 90. We have been blessed to be part of his life as colleagues and friends.”

Husband of the late Billie Joe Loeben, father to sons Arthur F. Loeben, Jr. and Jeffrey Loeben, and grandfather to one grandson and three granddaughters, Loeben served his country in the United States Air Force during World War II, instructing prospective navigators and flying 20 combat missions in the Pacific Theater as

a navigator and bombardier in a Mitchell B-25. He also served with the U.S. occupation forces in Japan.

Returning home, he attended the University of Pennsylvania, earning a B.S. in Economics and a Master’s in Economic Geography. He also taught economics for a time at Penn’s Wharton School of Business before becoming a member and subsequent Director of the Montgomery County Planning Commission where he spent nearly 40 years of his professional career.

“I became Associate Director of the Montgomery County Planning Commission in 1957 fully intending to write my dissertation for my Ph.D. and go back into academia,” Loeben said in an interview for the School of Environmental Design alumni magazine. “But in 1962, there was a political revolution in Montgomery County, a new breed of leaders that wanted to do a lot of new things. I was asked to be Director of the planning commission and I said okay.”

Loeben served as the Director of the Montgomery County Planning Commission until his retirement in 1995 at the age of 76.

“There were so many significant changes during that time,” he said. “We successfully built the Blue Route, (Route 476 south of the Mid-County interchange) which took years of bitter battles that went all the way up to the Supreme Court. There actually were plans for a green and yellow route, but the Blue Route was selected.”

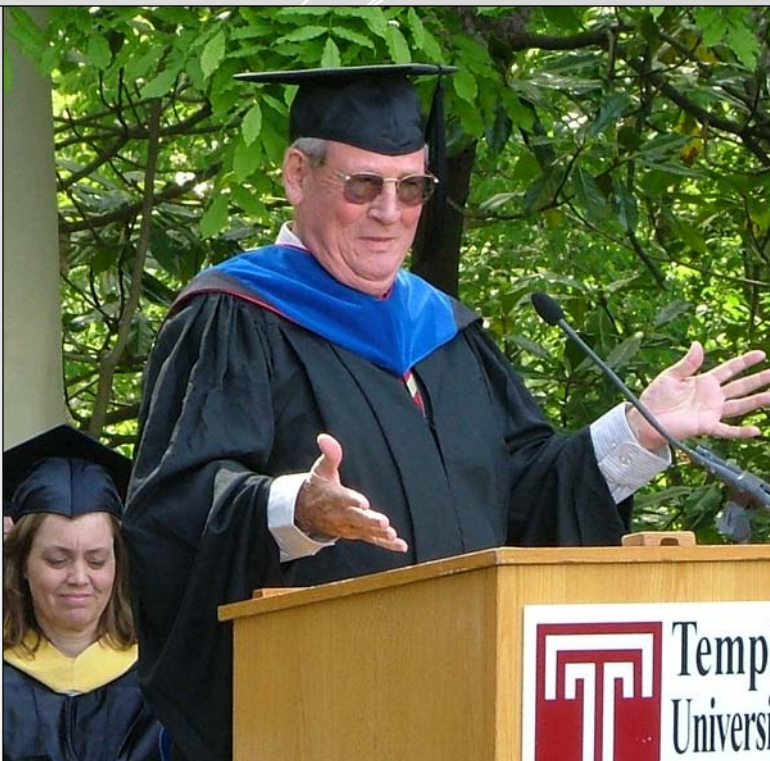
Dr. Jeffrey Featherstone, Director of Temple's Center for Sustainable Communities and a research professor in the Department of Community and Regional Planning, said Loeben — who was also heavily involved in the formation and operation of SEPTA — was one of the first people he met when he moved from Minnesota to Trenton, NJ. Dr. Featherstone is former deputy executive director of the Delaware River Basin Commission.

"Everyone told me, if you want to do anything in Pennsylvania you need to talk to Art. Serving as executive director of a prominent planning commission for 38 years is incredible," said Dr. Featherstone of his mentor. "Besides being a real smart guy, Art was one of the most politically adept people I've ever met. He was a major player in getting Route 476 built; **he successfully built coalitions to move planning projects along.** DVRPC (Delaware Valley Regional Planning Commissions) staff always appreciated his ability to get the other board members to come to agreement on various transportation projects in the region. He simply was the best at what he did."

While fully dedicated to the betterment of Montgomery County for the sake of its residents, **Loeben also was a global citizen** in every sense of the word.

From India to Japan, Australia to South America, Loeben visited more than 55 countries, several more than once, and walked on almost every continent (he never quite made it to Antarctica, but probably not for lack of trying). Yet even with such wanderlust, Loeben's heart remained close to home, as did his dedication to the profession he devoted most of his life to — planning.

"Art was a planner before people really knew how important planners were for a community, a region, a city. Art often referred to himself as a member of the 'Dinosaur Club,' a membership which consisted of planners who became planners before planning became a degree program," said Linda Lowe, Director of Development and Alumni Affairs at Temple University Ambler. "He would love to talk with the Com-



LEFT: Loeben addresses graduates at Temple University. BELOW: Loeben's 90th birthday celebration in 2009.

munity and Regional Planning students about his life and how he himself got into planning — he happily became the Commencement speaker at one of our School of Environmental Design graduation ceremonies. He often offered insightful advice to our students."

In an effort to support future planners, **Loeben generously endowed the Arthur F. Loeben Scholarship** in Community and Regional Planning for undergraduate and graduate students in the Department of Community and Regional Planning. It was the first scholarship created specifically for the CRP program. After the creation of the scholarship, Loeben remained one of the program's strongest supporters and a member of the School of Environmental Design's Board of Visitors. He also sponsored a scholarship at Montgomery County Community College for students interested in pursuing a planning degree.

In establishing the scholarship at Temple, Loeben said his hope was that it would help produce professionals "that are able to advance and promote sensible planning."

"We used to have to hire three to four new planners on average every year; we were always recruiting," he said. "Often we had

CONTINUED ON PAGE 8



APA Region I Updates

from Angela Vincent, Board Director

THIS YEAR'S APA FEDERAL POLICY AND PROGRAM BRIEFING left me very inspired, ready to lead and excited to promote the innovative work that planners do to make great communities. Chock full of programs sessions on jobs and the economy, the future of policy for housing and community development, key economic development strategies, and the status of transportation reauthorization, I was reminded of the ever increasing importance of planning and the role of planners. Some important messages from federal agency representatives and local leaders were provided that I'd like to share in the hopes that we all remember that we are leaders in our communities and region in all aspects of planning:

- 1/ Cultivate long-term relationships** with forward thinking CEOs and business organizations. These business leaders are essential stakeholders in creating sustainable local and regional economies. Keep them in the loop: invite them to workshops and economic development meetings, send them relevant newsletter articles about successful projects. They are important partners in our community – find ways to incorporate them in a meaningful.
- 2/ Develop a solid definition of sustainability.** While there is support for sustainable communities in the U.S., there are many definitions floating around. If you have defined sustainable development in your community (congratulations!), promote that definition widely.
- 3/ Frame sustainability in terms of creating jobs** and boosting economic prosperity. As mentioned above, there is support in our communities for sustainability, creating jobs and enhancing our economy are the most important issues on the public's minds.
- 4/ Leverage the power and energy of young planners and citizens.** Their energy, commitment to their neighborhoods, and innovative ideas is a breath of fresh air and will inspire us to look outside the box. One way to do this is through the Community Planning Assistance Team projects, but there are lots of opportunities to engage these key players in every day planning and bring new life to our work.

WE HAVE AN INCREDIBLE OPPORTUNITY to be leaders in these tough economic times and to show how planning creates jobs, improves the economy, maintains existing communities, incorporates all sectors of the community in planning for growth, and creates livable walkable places where we can all thrive. It's time to Lead, Inspire, and Innovate.

Sustaining Places Initiative Report

The Sustaining Places Initiative Report is out! Thanks to the incredible work of David Godschalk FAICP and Bill Anderson, FAICP who co-chaired the Sustaining Places Task Force, the 119 page report outlines the role of comprehensive plan as the leading policy document and tool to help communities of all sizes achieve sustainability. The final report outlines key strategies and recommendations for a Sustaining Places Agenda. It calls on the APA and AICP to lead this agenda through:

- 1/ Establishing a professional culture** that recognizes and fosters the growth of sustaining places applications in planning practice and education;
- 2/ Conducting research and development** aimed at building our repertoire of sustaining places knowledge, concepts and techniques: and
- 3/ Developing education and awareness activities** aimed at widening public and professional understanding of the potential and importance of sustaining places planning.

THIS REPORT OUTLINES THE CORE ELEMENTS a comprehensive plan should have to develop sustaining places and how to measure our progress towards achieving more sustainable communities. It also outlined leading plans from across the U.S. that incorporated sustainability into their comprehensive planning process. Several of those leaders are right here in the Northeast: Burlington, VT; Keene, NH; Philadelphia, PA; and Albany, NY. We look forward to the next steps for activating the embracing the Call to Action that was made in this report and to taking this opportunity to make a critical difference in the places where people will live in the future through the future. If you would like a copy of this report, please visit:

<http://www.planning.org/sustainingplaces>. ♦

to hire 'related professionals' and train them ourselves. It is extremely important for universities to produce good planners who know how to write and speak effectively."

Loeben, Howe said, "respected higher education and knew that our future lies with these new planners."

"Art Loeben was one of the finest gentlemen I have ever met. He was intelligent, caring, adventuresome, funny and most of all generous — generous with his time, his knowledge and his philanthropic giving. Thanks to Art, outstanding students enrolled in the CRP program receive tuition assistance and in today's economic economy, this type of scholarship is not only appreciated it truly does allow students to continue with their higher education," she said. "Art often said 'These students will be faced with many challenges but thanks to their education through Temple they will be well prepared for what lies ahead.'"

Loeben was a member of a variety of professional and community organizations including the American Planning Association, American Institution of City Planners, Chapter President of the Pennsylvania Planning Association, Community Leaders of America, Lambda Alpha, the Delaware Valley Regional Planning Commission, Clean Air Council Board, Montgomery County Lands Trust, Community Development Corporation and the Pennsylvania Resource Council. He was awarded the Lifetime Achievement Award in 1990, American Man of Science and listed as Who's Who in the East.

In 2009, Loeben spent his 90th birthday at Temple University Ambler where he received a commemorative crystal presented by the Ambler Campus and the Montgomery County Lands Trust and received a Citation from the State House of Representatives for his years of dedication and service.

"I am blessed, and life is good, believe me. Life is very good," said Loeben during the special reception attended by dozens of friends,

CONTINUED ON PAGE 10



AICP EXAM PREPARATION

Scholarship Available to Reduce Exam Fee

THE PA CHAPTER OFFERS a variety of options to support our members in preparing for the upcoming AICP Exam in May 2012. PA Chapter is planning a study session this spring.

- **AICP Exam Prep Session:** To be scheduled for late February/early March 2012. This is an in-person, all day study session, and will be held in the Harrisburg area. Registration information will be posted on the PA Chapter website (www.planningpa.org) when available.
- **AICP Exam Prep Webcast:** The audio and slides from past prep sessions are available on the AICP Exam page of the PA Chapter website.
- **Other Study Materials:** Additional presentations, links to resources, and PDC Study Notes are also available on the AICP Exam page of the PA Chapter website.
- **APA AICP Exam Prep Study Manual:** The APA AICP Exam Prep Study Manual 1.0 is available to borrow from the PA Chapter office. Past exam participants have found the study manual to be very helpful. Contact the office at 717-671-4510 or sgalbraith@shermer-assoc.com for arrangements. While a newer version of the study manual (2.0) was recently published, the 1.0 version contains significant information to assist in your preparation, and includes an addendum. You may also purchase the 2.0 version from APA at www.planning.org.
- **Reduced Fee Scholarship:** The PA Chapter annually awards partial scholarships for the AICP Exam, reducing the fee from \$495 to \$135. Please note that APA requires that scholarship recipients have NOT submitted their AICP Exam application. For this reason, the PA Chapter recommends that scholarship applicants wait until scholarships are awarded to submit their AICP application. Please see www.planningpa.org for information on how to apply for a scholarship. Applications are due Friday, January 13, 2012.

Please let us know if you have any questions and the best of luck in your preparation for the exam. ♦

Important Dates – May 2012 Exam

- Application window open:** December 1, 2011
- Early Bird Application Deadline:** December 15, 2011
- PA Chapter of APA Reduced Fee Scholarship Deadline:** January 13, 2012
- Final Application Deadline:** January 24, 2012
- Early Bird Notification Date:** February 15, 2011
- Final Notification date:** April 4, 2012
- Testing window:** May 7-21, 2012

IN MEMORIAM

Elaine Moranz

Former Delaware County Planning Director,
Passes Away at Age 65

ELAINE NEWMAN MORANZ, Delaware County planning director in the mid-1970s, died of ovarian cancer on October 27, 2011 at Bryn Mawr Hospital.

BORN IN CLAYTON, MISSOURI, Elaine Newman attended the University of Michigan, where she met her future husband, Joel Moranz. After graduating in 1968, Elaine and Joel moved to Philadelphia to pursue further studies at the University of Pennsylvania, where Joel enrolled in the School of Medicine and Elaine in the Graduate School of Fine Arts (now the School of Design), from which she earned a master's degree in city planning. She worked at the Philadelphia City Planning Commission and then at the Delaware County Planning Department, where she served as director from 1976 to 1977. While at Delaware County she was also the principal author of the County's Administrative Code, the ordinance implementing the Home Rule Charter approved by the voters in 1975.

ELAINE RECEIVED A LAW DEGREE from Penn in 1980 and joined the firm of Meltzer & Schiffrin, which later merged with Fox, Rothschild, O'Brien & Frankel. As a partner at Fox Rothschild, she specialized in commercial real estate law. In addition, Elaine, Joel, and their close friend Jana Paley renovated an 1884 National Register commercial property in Ketchum, Idaho, receiving an award from the American Institute of Architects in 2010.

ALTHOUGH NOT A PRACTICING PLANNER at the time of her death, Elaine always appreciated her planning roots, and her legal accomplishments show how a planning background can be a useful basis for other endeavors.

ELAINE'S FUNERAL was held on October 28th at Joseph Levine & Son Memorial Chapel in Broomall, and was attended by many of friends and colleagues. Burial was at B'nai Amoona Cemetery in St. Louis. Donations in her memory can be made to the Sandy Rollman Ovarian Cancer Foundation.

www.sandyovarian.org ♦

Architects Engineers Surveyors

LDC Larson Design Group®

www.larsondesigngroup.com

TOLL FREE 877.323.6603    

Williamsport, PA | Bloomsburg, PA | Selinsgrove, PA
Lititz, PA | Bethel, PA | Corning, NY



Central Section Updates

by Tara A. Hitchens, AICP, Section Chair

DID YOU KNOW that the Central Section will assist in co-sponsoring a PMPEI (*Pennsylvania Municipal Planning Education Institute*) course? The Central Section sets aside \$900 to co-sponsor three **PMPEI training courses** each year. The maximum request is \$300 for those communities or organizations in the Central Section that sponsor a PMPEI course. For more information or to request co-sponsorship funds contact any member of the Central Section council: **Tara Hitchens at thitchens@co.lancaster.pa.us, Dick Koch at rkoch@gfnet.com, Pam Shellenberger at pshellenberger@ycpc.org, Rachelle Ricotta at raricotta@stepcorp.org, or Jonathan Pinkerton at JPinkerton@susquehannaheritage.org.**

In 2012, the Central Section has set aside **\$1,000 to support Youth Planning Programs**. In the past the Central Section has supported the Penn State Cooperative Extensions Youth Planning Program with the use of Box City for a number of years. The Central Section Council has decided that there are numerous programs that communities, planning agencies and organizations are utilizing and wish to support their efforts in educating our youth in the planning process. If your community, organization or planning agency has a specific youth planning program that is in need of financial assistance, please contact a member of the council (*see above for email contacts*).

On September 23, 2011 the Central Section hosted a workshop on **Reinventing Commercial Corridors: Strategies to Create Viable Centers** with **Randall Arendt**. Mr. Arendt, a land use planner, site designer, author and lecturer, described and illustrated design strategies to create thriving mixed-use centers from existing highway strips. He included ideas for improving downtown economic viability and attractiveness while helping communities understand how to achieve more sustainable development patterns through smarter codes. Twenty-four attendees took part in a design exercise in the second half of the workshop. Attendees were asked to redesign an existing strip development site into a mixed-use corridor or node using the concepts presented in Mr. Arendt's lecture. Each group then presented their ideas with follow-up discussion. Our special thanks goes to **Pam Shellenberger, AICP** for her dedication to organizing this workshop.

We welcome anyone that wishes to attend the next meeting of the Central Section on **January 27, 2012** at 10:00 a.m. at the Ranch House in Watts, PA. At this meeting the section will be discussing the spring 2012 workshop. ♦

PMPEI

PA Municipal Education Institute Schedule

PMPEI OFFERS in-depth, stimulating, and interactive educational experiences for citizen planners, zoners, appointed and elected municipal and county officials, and professionals involved in planning.

Many courses will be offered throughout the state in 2012. New PMPEI courses are added regularly. Visit **www.planningpa.org/events_pmpei.shtml** for course descriptions and schedule information.

To host a PMPEI course in your community contact Stan Lembeck, AICP at **sml1@psu.edu** for more details. ♦

Loeben

CONTINUED FROM PAGE 8

family, and colleagues, many of whom Loeben had hired "right out of school."

"His foresight and his ability to work with diverse groups to achieve real, concrete change arguably did more than any other planner in this region or any other public servant in Montgomery County," said Dr. James W. Hilty, Professor of History and Community and Regional Planning. "The cross-county expressway and the county open space program were just two of his important contributions. Moreover, Arthur was instrumental in the training of hundreds of planners and public officials."

For Loeben, **preservation of open space was always one of his top priorities**. Even in retirement he served on the Montgomery County Lands Trust and remained heavily involved with the Wissahickon Valley Watershed Association, which he helped to found.

"We started an open space grant program in the 1960s and started open space preservation in earnest in the late 1980s with a bigger program and the appointment of an open space committee," Loeben said. "In the early 90s, that led to a \$100 million open space program, which helped a lot of townships, boroughs, and the county to buy and preserve farmland and protect significant areas in the Wissahickon, Pennypack, and Perkiomen watersheds. We were also able to develop Evansburg State Park — 3,300

acres preserved."

Loeben will be missed "for his stories, his expert advice, his dedicated professionalism and the way he approached life," said Howe.

"He always had a smile and a special twinkle in his eyes," she said. "He would ask people he met 'Do you think you are lucky?' and then say 'I consider myself to be lucky, but then I also seized the opportunities when they arose; I hope you do the same.'"

To leave a remembrance about Arthur Loeben, visit **www.tributes.com/show/Arthur-F.-Loeben-92575732**.

In lieu of flowers, donations in Arthur Loeben's name may be made to the following: Department of Community and Regional Planning, Temple University School of Environmental Design, 580 Meetinghouse Road, Ambler, PA 19002; Montgomery County Lands Trust, P.O. Box 300, Lederach, PA, 19450; or Montgomery County Community College, 340 Dekalb Pike, Blue Bell, PA 19422. The PA Chapter of APA will be making a formal donation to the Temple University program in Loeben's memory.

Our thoughts and prayers go to Arthur Loeben's family at this time. Knowing him made each of our lives richer; his easy smile made each of our days brighter; his knowledge and keenly observant mind gave each of us more insight into the world around us. We, and the region, are better for having him in our lives. He will not soon be forgotten. ♦



**Submit Your
News &
articles**
for *The Vantage Point*

We are always seeking articles on current planning topics and planning news!

The Vantage Point is published bimonthly and contributions that are timely, newsworthy, and of statewide interest are welcome. Dated material should be submitted well in advance according to our deadlines below. Submitted articles of 500 words or less in length should be sent by email to. Please include artwork, illustrations or photographs if possible. Images must be scanned at 300 dpi with a print size of at least 2.5 inches wide. The author's name, position, and employer's name and city must also be included to ensure proper credit. Shorter articles and announcements of 100-150 words are welcome.

**Deadlines for
Upcoming 2012 Issues:**

Feb 2012 Issue: Jan 20, 2012
Apr 2012 Issue: Mar 23, 2012

Submit to:
sgalbraith@shermer-assoc.com

WEBCAST series

2012 Webcast Series Announced! Register Now!

WE'RE PLEASED TO ANNOUNCE the 2012 Webcast Series. As a reminder, all webcasts are free (registration required) and most take place 1pm to 2:30pm Eastern Time unless otherwise noted. Many sessions qualify for CM credits. Some Introductory sessions do not. See website listing for more details.

For the full schedule, more information and to register visit:
www.utah-apa.org/webcasts



January 13
New Mexico Chapter: Community Mobility – *Introductory*

January 20
Maryland Chapter: Integrated Clean Energy Strategies for Sustainable Communities – *Introductory*

February 3
Economic Development Division: Opportunities and Challenges in Rural Tourism Planning – *Introductory*

February 10
Wisconsin Chapter: Planning for Innovation in Waste Management and Recycling – *Introductory*

February 17
Ohio State University: Crossing Into New Territory: Suburban Immigration and Local Government Reactions in the Washington DC Region – *Advanced*

February 24
Transportation Division: Planning for Goods Movement: Players, Trends, Challenges

February 29
Small Towns and Rural Places Division: Regulating Sand and Gravel Mining: Lessons From Michigan – *Advanced*

March 2
Ohio Chapter: Community Development in a Global Context: Gender-Aware Planning in African Cities – *Introductory*

March 9
Planning and Women Division: The Economic Impacts and Opportunities of Families: Children, Elders, and Caregivers – *Introductory*

March 16
Private Practice Division: Federal Tools for Aging and Livable Communities

Key to Session Types:

Introductory: Appropriate for planners who are not working directly in this content area. Generally not CM approved.

Advanced: Appropriate for planners who are working directly in this content area and planners in a management role who supervise planners who are working in this content area.

Allied: Appropriate for all planners and will cover topics in allied fields related to planning. Typically CM approved. ♦

EPD

ENVIRONMENTAL
PLANNING & DESIGN, LLC
Landscape Architects
Community Planners
Urban Designers



100 Ross Street
Pittsburgh, PA 15219
(412) 261-6000
www.epd-pgh.com

PLANNING FOR A SUSTAINABLE FUTURE



Gannett Fleming

A Tradition of Excellence

Harrisburg • Chambersburg • Clearfield • Lancaster
Philadelphia • Pittsburgh • State College • Valley Forge

www.gannettfleming.com

Phone: (717) 763-7211

ISO 9001:2008
CERTIFIED



Making Great Communities Happen

587 James Drive
Harrisburg, PA 17112

logon
www.planningpa.org

Non Profit Org.
U.S. Postage
PAID
Harrisburg, PA
Permit No. 561

2012 Annual Conference
October 14-16, 2012

Charting a New Course **Balancing Opportunity and Environment**

MARK YOUR CALENDARS NOW for the PA Chapter of APA 2012 Annual Conference! This year's event takes us to the Northwest Section and Erie, PA. Planners from across the state will gather Sunday, October 14 to Tuesday, October 16, 2012 at the Bayfront Convention Center and Sheraton Erie.

Interested in presenting a workshop?

The Call for Presentations will be announced in mid-January 2012. Watch for notification by chapter email. All details related to submitting a proposal, including topics sought and important deadlines, will be posted on the PA Chapter website.

Connect with Planners through Sponsorship, Exhibit and Advertising Opportunities

Be a part of the largest annual gathering of Pennsylvania's professional planners and planning officials at the PA Chapter of APA 2012 Annual Conference! Attendance at the 2010 Annual Conference exceeded 500 attendees, and almost 400 attendees came together at the 2011 Annual Conference. Marketing efforts are estimated to reach 5,000 planners in the state. Details for how to confirm your participation will be available in January 2012.

For all the details visit www.planningpa.org and go to the 2012 Annual Conference webpage, found under Events and Training. ♦