



THE VANTAGE POINT



American Planning Association
Pennsylvania Chapter

Making Great Communities Happen

A Publication of the Pennsylvania Chapter of the American Planning Association



SPONSOR!



EXHIBIT!



ADVERTISE!

Connect with Planners at the PA Chapter Annual Conference

THE PA CHAPTER

Annual Conference offers excellent opportunities to sponsors, exhibitors and advertise. Be a part of the largest annual gathering of Pennsylvania's professional planners and planning officials by sponsoring, exhibiting or advertising at the event. The **Preliminary Program, distributed in July 2010**, is expected to reach 5,000 members of Pennsylvania's planning community. Additionally more than 500 planners will be in attendance at the conference.

To be sure your company or organization maximizes the benefit of these opportunities confirm your arrangements with the PA Chapter office no later than **June 25, 2010**. Details are available online at www.planningpa.org. Click on "Annual Conference." ♦

REGIONAL FOOD SYSTEM PLANNING

in Greater Philadelphia

*by Alison Hastings,
AICP, PP and
Amanda Wagner,
Delaware Valley
Regional Planning
Commission*

**Sustainable
growing practices
at Fernbrook Farm
in Bordertown,
New Jersey.**

AGRICULTURE PLAYED an integral role in the formation of cities; the growing, buying and preparing of food was intertwined in the earliest planning efforts, most notably in **Ebenezer Howard's Garden Cities of Tomorrow**. However, in the decades following World War II, food and agriculture were seen as private, rural, and scientific enterprises that did not necessarily require the expertise of planners. As energy, sustainability and equity concerns become more apparent and widespread planners across the country are increasingly recognizing the connection between food and many other factors, including land use, economic development, environmental planning, and healthy livable communities.

The Delaware Valley Regional Planning Commission (DVRPC), Greater Philadelphia's Metropolitan Planning Organization, is both a traditional and a new partner in regional food systems. DVRPC has long advocated for farmland preservation and open space protection as ways to direct more growth into urban areas and inner-ring suburbs, making public infrastructure dollars go farther.

These efforts slowly revealed that preserving farmers is just as important as preserving farmland.

A more comprehensive look was needed to help communities in the region prepare for climate and energy uncertainties, improve public health and the environment, and catalyze economic development. The dimension of

MORE AND MORE Americans want to know where their food comes from, how it is grown, how it gets to stores, and where it goes once it is scraped off their plates. Planners are, once again, becoming involved in aspects of the food system, and a new field of food system planning is rapidly evolving.



PHOTO: DVRPC

CONTINUED ON PAGE 2

REGIONAL FOOD SYSTEM PLANNING

CONTINUED FROM PAGE 1

transportation, getting food products from the source to market, also reflects DVRPC's transportation and goods movement studies and plans.

DVRPC recently released the Greater Philadelphia Food System Study, an assessment of the natural, economic and social resources of the "foodshed," or geographic area within a 100-mile radius of Philadelphia. It is **the first MPO-led food system planning effort**, and one of the most comprehensive food system studies, incorporating freight data analysis. With such a broad area, the foodshed includes more

BELOW: In a densely populated area like Greater Philadelphia, not all food can be local. Using conservative estimates of agricultural land needed for a complete diet, as derived by Christian Peters at Tufts University, Greater Philadelphia's population requires over 6.8 million acres of agricultural land.

than DVRPC's five southeastern Pennsylvania counties, such as Berks, Lancaster, and Adams counties in Pennsylvania, and Salem and Cumberland counties in New Jersey.

The year-long study revealed that, while the 100-Mile foodshed includes a diversity of farmers, its food supply cannot meet Greater Philadelphia's total demand for food. This supply and demand problem is exacerbated by the **steady loss of viable farmland** to a sprawling and inefficient land use pattern. Additionally, **many Americans are eating highly processed convenience foods**, which has led to a prevalence of diet-related diseases, hunger and "food insecurity" (not knowing when you will have your next meal).

On the positive side, the **efforts to strengthen the regional food system are gaining momentum**. Many stakeholders in Southeastern Pennsylvania and Southern New Jersey are



PHOTO: JIM AUCHINLECK

Value-added products from Lancaster County for sale at Reading Terminal Market, Philadelphia

becoming more engaged in these issues and looking for opportunities to collaborate.

DVRPC is building on the study's findings by identifying shared values, goals, and recommendations for a more sustainable regional food system.

Greater Philadelphia's regional food system fits within a global food system and is made up of numerous local food systems. Local governments have a vital role to plan in improving their local food systems. DVRPC has

also prepared a municipal implementation tool brochure for local governments demonstrating the tools and resources available to a municipality. This publication will be released in the spring. ♦

More information about DVRPC's work on regional food system planning, links to stakeholders in government, non-profit, and private businesses, and downloadable copies of the study are available at www.dvrpc.org/food.

Greater Philadelphia's Agricultural Land Needs

DEMAND				TOTAL AGRICULTURAL LAND NEEDS PER CAPITA (ACRES)*		TOTAL AGRICULTURAL LAND NEEDS FOR GREATER PHILADELPHIA (ACRES)		SUPPLY	DEFICIT
DVRPC REGION 2005 POPULATION (PERSONS)								DVRPC REGION 2007 TOTAL CROPLAND AND PASTURELAND (ACRES)**	(ACRES)
5,519,051	x	1.23	=	6,788,433				379,481	-6,408,952
DEMAND				TOTAL AGRICULTURAL LAND NEEDS PER CAPITA (ACRES)*		TOTAL AGRICULTURAL LAND NEEDS FOR THE 100-MILE FOODSHED (ACRES)		SUPPLY	DEFICIT
100-MILE FOODSHED 2003 POPULATION (PERSONS)								100-MILE FOODSHED 2007 TOTAL CROPLAND AND PASTURELAND (ACRES)**	(ACRES)
30,954,544	x	1.23	=	38,074,089				4,127,348	-33,946,741

*Assumes a diet that meets recommended total caloric value of 2,000 calories per person, and includes about nine ounces of cooked meat and eggs and 91 grams of fat.

**Excludes "woodland not pastured" and "land in farmsteads, buildings, etc."

Source USDA 2009, DVRPC 2009

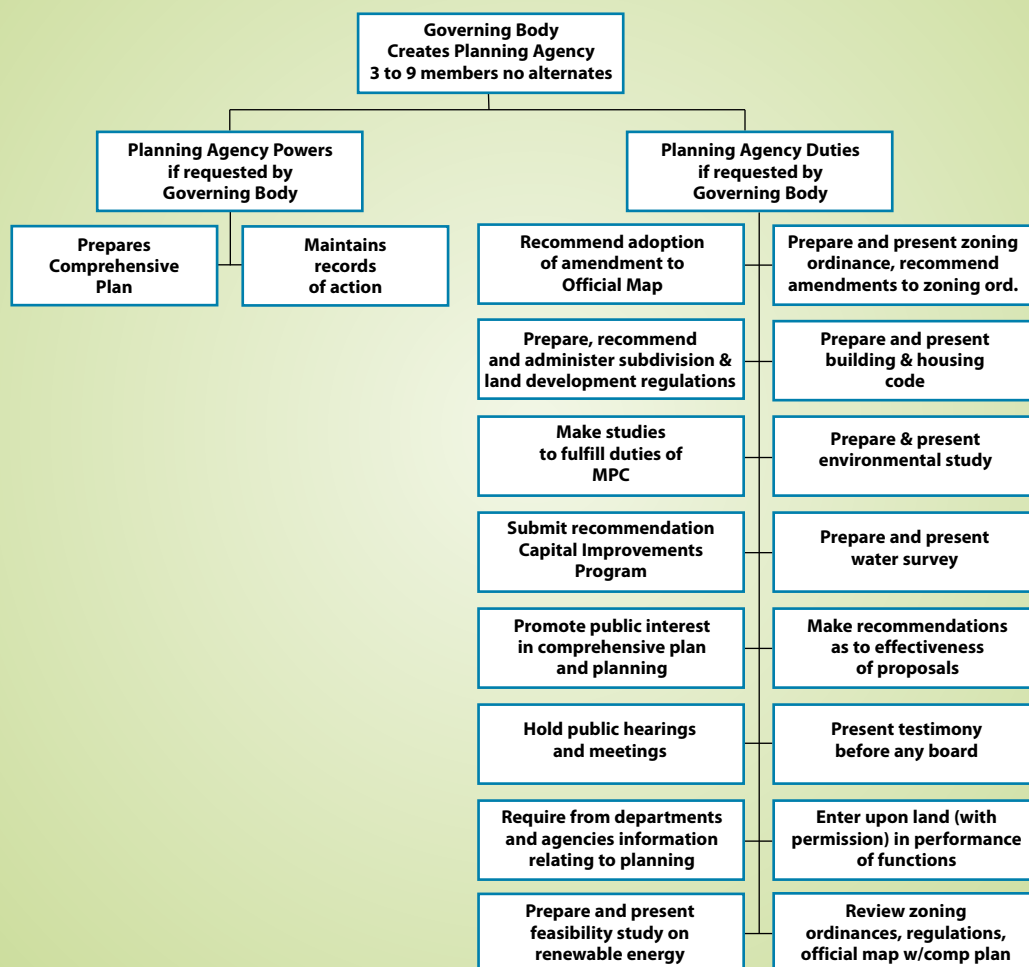
DUTIES *of a Planning Commission*

by Shirley Yannich, PP, AICP,
PA Chapter Planning Officials
Development Officer



PENNSYLVANIA POWERS AND DUTIES OF THE PLANNING AGENCY

in accordance with the Municipal Planning Code (MPC)
Article II, Sections 209.1(a)(b)



The PA Chapter Planning Officials Development Committee has prepared the following chart to address the many questions that come from the public regarding the duties of a planning commission.

FORTUNATELY, the powers and the duties of planning agencies — a planning commission is one of those agencies — are clearly defined in the Pennsylvania Municipalities Planning Code (MPC). The MPC is the enabling legislation that empowers counties, cities (excluding Pittsburgh and Philadelphia), boroughs, towns, and townships to plan their development and to govern the same by zoning.

In most Pennsylvania municipalities the planning agency is an advisory body reporting to the governing body. The most important duty the planning agency has is to prepare the comprehensive plan and present it to the governing body for adoption.

If your municipality has a planning commission and/or planning department, the governing body would have created it by adopting an ordinance. A planning official should be aware of the contents in their municipality's ordinance. It is not uncommon for a municipality's ordinance to follow the MPC directive.

The powers and the duties of a planning agency are shown the following chart. Your municipality can duplicate the chart and make it available to the citizens as a handout at planning commission meetings, municipal functions and by displaying it on your website. ♦

INSIDER

A Message from President Alexander J. Graziani, AICP



Chapter Development Plan:

On January 28-29, 2010 the PA Chapter of the American Planning Association Board of Directors met in State College, PA for their 2010 planning retreat.

With a goal of inclusivity, members not currently in Chapter leadership also joined the Board for this project. In total we had 25 participants including APA staff and student members as well planners from across the spectrum of our profession. **Our goal was to develop a strategic plan which will be adopted by the full Board at their August meeting.** The plan will guide the Chapter to making good strategic decisions over the next 3 to 5 years.

The retreat was facilitated by **Edward F. Swenson III** and **Jennifer Shropshire** of Edward F. Swenson & Associates, Inc. ESA is a top notch firm from Philadelphia.

ACCORDING TO THE SURVEY THE **"ANNUAL CONFERENCE"** AND THE **"NEWSLETTER — THE VANTAGE POINT"** WERE OUR TWO GREATEST STRENGTHS.

Going into the retreat the Executive Committee expressed the following desired outcomes:

- Focus on a small number of key priorities
- Develop a realistic implementation plan that considers our current volunteer and management resources
- Position the Chapter's new strategic plan in a transparent and meaningful way in order to encourage the broadest participation possible

The last of the three is why we are going to allow for a process in which the Executive Committee takes the output of the retreat and forges a draft plan for Board of Directors review. When the draft plan is approved by the Board of Directors we will make it available at our website for review and comment by the entire membership. After receiving and reviewing the comments and making necessary changes to the draft plan the Board of Directors will vote to adopt the final plan in August. The final plan will be released on the chapter's website, www.planningpa.org as well as at the 2010 Annual Conference.

One of the things we did prior to the retreat was to reach out to our membership with a short seven question on-line survey. Three-hundred and ninety-three (393) members completed the survey, slightly more than 20% of our email database.

According to the survey the "Annual Conference" and the "Newsletter — *The Vantage Point*" were our two greatest strengths. "Small voice of influence" and "Perception by devel-

A snapshot of the retreat outcomes includes the following proposed items for the chapter:

VALUES –

- Unbiased and open-minded planning
 - Planning is a critical function of government and citizenship
 - Planning process that is inclusive and empowering
- VISION – Planning Matters**

MISSION –

The PA Chapter of APA provides leadership in the creation of vital and sustainable communities by advocating for excellence in planning through education, citizen empowerment, collaboration, and supportive public policy.

PRIORITIES –

- Promote the need for resources for planning and plan implementation at all levels of government.
- Promote a "culture of planning" throughout the Commonwealth
- Enhance the Chapter's organizational and programmatic capacity

Please stay tuned for more about the draft plan and plan to add your comments.

opers and elected officials" were our two biggest weaknesses. When asked what was the number one thing that came to mind when they thought of the chapter it was the "Annual Conference" at 51% and "Professional Development" at 25%. Nearly 80% felt that the current mission statement accurately reflects what we do as an association.

We received 312 responses when asked to provide what should be the most important goal of the chapter. Part of the job of the executive committee is to see how these goals match up with the priorities of the retreat.

Thank you to those of you who completed the survey. I expect you will also comment on the draft plan when it is released.

The Planners Unite Effort

In keeping with many of the messages uncovered at the development plan retreat and through the member survey, a group of chapter volunteers recently

formed the Planners Unite committee. For more information on this initiative please see Shannon Debe's Planners Unite article on page 6 and Ed Wilson's LUPTAP support article on page 6. Both are a demonstration of the Chapter's strong effort to restore LUPTAP funding to 08-09 levels.

My thanks goes out to the dedicated volunteers who give so much time to the association. It is gratifying to serve an association with so many dedicated volunteers. I would also like to thank Shermer & Associates for their extra efforts to help make the retreat so successful.

As always feel free to share with me at alex@smartgrowthpa.org any issue important to you about the association. The Pennsylvania Chapter of the American Planning Association is a membership organization. Help us better serve you the planning professional and planning official. ♦



American Planning Association
Pennsylvania Chapter

Making Great Communities Happen

587 James Drive
Harrisburg, PA 17112
717 671-4510 (P)
717 545-9247 (F)
www.planningpa.org

Susan Shermer, CMP
Administrative Director
sshermer@shermer-assoc.com

Sarah T. Galbraith, CMP
Chapter Administrator
sgalbraith@shermer-assoc.com

The Vantage Point is printed on Roland Opaque30 Smooth Bright White 70# and contains FSC certified 50% post-consumer fiber. The paper is EcoLogo and FSC Mixed Sources certified and is manufactured using renewable biogas energy. Roland papers are produced by Cascades, an environmentally friendly company whose paper production practices saves 30 million trees a year. Inclusion in this newsletter of ads does not imply endorsement by PA APA.



Please help us close the loop
and recycle this newsletter.

WEBCASTseries

earnCMcredits

The 2010 Webcast Series provides CM approved professional development for PA Chapter members. For session descriptions and to register visit www.utah-apa.org. New sessions are regularly added – check the schedule often.

UPCOMING WEBCASTS

All webcasts qualify for 1.5 CM credits and take place from 1:00pm to 2:30pm ET.

April 9

The American Housing Survey

May 7

Creating Urban Form: Conventional and Form-Based Codes

May 14

Implementing Planning Support Tools: Best Management Practices for Adoption and Use

June 3

Sex in the City: Design Standards and Regulations that Work for Sex Businesses - LAW CREDITS AVAILABLE

June 4

Urban Design and Preservation Division

June 11

Bus Rapid System: The Inside Story of the New York BRT
Sponsored by the Transportation Division of APA

June 25

Understanding the Unserved Workforce



Chester County Unveils an

INTERACTIVE PLANNING WEBSITE

New internet site brings growth and preservation together for Chester County

by David Ward, AICP, Assistant Director,
Chester County Planning Commission

The Chester County Planning Commission recently unveiled the new long-range policy plan for Chester County entitled **Landscapes2**.

Employing new technologies, **Landscapes2.org** is a web-based, interactive site that can be updated and enhanced with the changing dynamics of Chester County.

Landscapes2 is the culmination of two years of planning and participation by the county planning commission, municipalities, community interest groups, and the public. This process resulted in a **blueprint for bringing growth and preservation together** in Chester County.

Web-based technology was integrated throughout the process, and included an on-line

public opinion survey, email newsletter updates, and list serve announcements. Through use of the web-based system, the county experienced a **significant increase in public participation** over conventional planning methods used in the past. Visits to the county website are quite high—registering nearly 5,000 visits a month.

An **interactive map**, entitled *Livable Landscapes*, is posted on the website using both a road map and aerial base, familiar to most web surfers. Users may toggle map features on and off, and use a dimmer switch to

create transparency through selected features.

Landscapes2 sets out three initiatives for guiding the future of the county, highlighting the policies and actions that will be implemented to accomplish the plan:

- Build working partnerships,
- Create sustainable communities, and
- Keep Chester County green.

Additional information and support resources are added to the site to keep the site and the plan contemporary and relevant to Chester County residents.

You are invited to experience the new plan at www.landscapes2.org. The website can serve as a web-based resource to other planners and municipalities in the Commonwealth. Web 2.0 technology can save time and money, and also gets communications out more efficiently. Let's get the word out about the value of the internet in planning! ♦

PA Chapter

Executive Committee

PRESIDENT

Alexander J. Graziani, AICP
Smart Growth Partnership

VICE PRESIDENT

Charnelle Hicks, AICP, PP
CHPlanning, Ltd.

SECRETARY

John Pickett, AICP, PE
Delaware County Planning Department

TREASURER

Mark Stivers, AICP
East Hempfield Township

LEHIGH VALLEY SECTION REPRESENTATIVE

Anthony P. Toth, AICP
alfred benesch & company

NORTHEAST SECTION REPRESENTATIVE

Peter T. Wulffhorst, AICP
Penn State Cooperative Extension

NORTHWEST SECTION REPRESENTATIVE

Roy Brant, PhD
Crawford County Planning Commission

PAST PRESIDENT

Carl Hess, AICP
Borough of State College

Section Chairs

Central

William Gomes, AICP
Mifflin County Planning Commission

Lehigh Valley

Anthony Toth, AICP
alfred benesch & company

Northeast

Christine Dettore
Monroe County Planning Commission

Northwest

Roy Brant, PhD
Crawford County Planning Commission

Southeast

Graciela Cavicchia, AICP
The Reinvestment Fund

Southwest

Jeff Grim, AICP
Southwestern Pennsylvania Commission

Committee Chairs

Professional Development

Officer/Professional Development Committee Chair
Susan Elks, AICP

Planning Officials Development Officer/Chair of the Planning Officials Development Committee

Shirley A. Yannich, PP, AICP

Communications Committee Chair

Dennis Martinak, AICP

Education Committee Chair

Cliff Kanz, AICP

2010 Conference Co-Chairs

James Cowhey, AICP

Jeffrey Featherstone, PhD

Richard Koch, AICP

Legislative Committee

Richard Bickel, AICP, Chair

Susan Smith, Esq., AICP, Vice Chair

Contact information is available at www.planningpa.org under "About the Association".

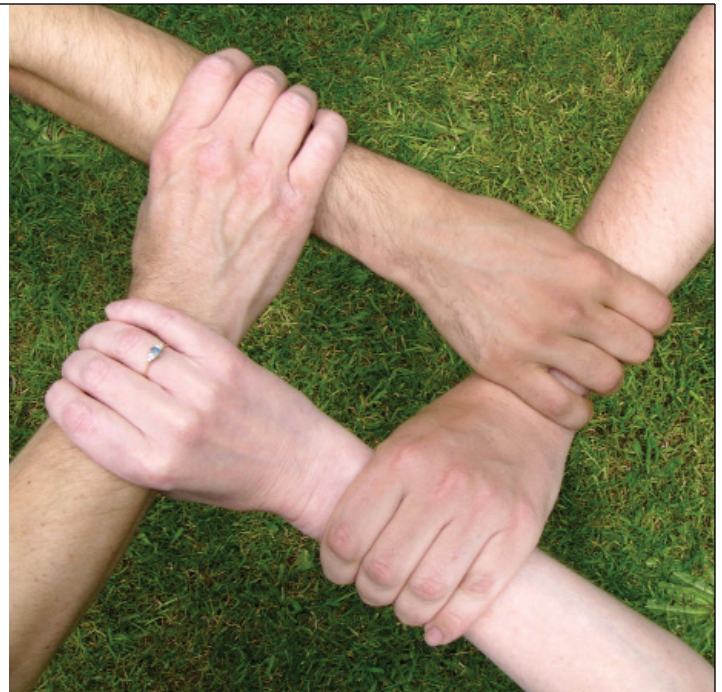
PA Chapter of APA Creates

PLANNERS UNITE COMMITTEE

to Advocate for Planning in the Commonwealth

by Shannon Debes, Owner, Stratecom Solutions

In this time of economic distress and resulting budget cuts, PA Chapter of APA recognizes the pressing need to advocate for the restoration of land use planning and technical assistance support from the Commonwealth.



A group of PA Chapter volunteers who are dedicated to elevating the profile of the profession and imparting a working knowledge of planning's necessity and impact to our elected officials have formed the PA APA committee Planners Unite. This hands-on interactive working group meets by teleconference every other week to discuss and assign tasks leading up to the release of a series of profiles on why planning matters, to be followed by a coordinated legislative lobbying effort with allied organizations. 10,000 Friends of Pennsylvania is on board with its support; an excerpt of an outstanding article by **Ed Wilson** is also featured in this issue (*see below*). The full article can be found at www.10000friends.org/president.

Current planning profiles may be found at the Chapter's website, www.planningpa.org. See the link on the home page for Planner's Unite. We welcome additional submissions that illustrate the efficient use of planning funds (through any state program) with quantifiable outcomes.

We also welcome additional members to the Planners Unite committee. If you know of a worthy project that should be featured in our planning profiles or would like to become a part of Planners Unite, please contact **Shannon Debes** of the Southwest Section at shannon.debes@stratecomsolutions.com. ♦

Pennsylvania Organizations join to Elevate the Status and Function of Planning

by Shannon Debes, Owner, Stratecom Solutions

ORGANIZATIONS from across the Commonwealth are joining efforts to raise the profile of planning and articulate the need for continued investment in planning programs and technical assistance for Pennsylvania's communities. One of several organizations to join the PA Chapter of APA in taking up the cause of elevating the status and function of planning is 10,000 Friends of Pennsylvania. The following article is an excerpt of "The President's Message," written by 10,000 Friends **Acting President and CEO Ed Wilson** on March 5, 2010. This selection highlights the need for state lawmakers to distinguish between government spending and government investments, and counts LUPTAP as one of the latter.

From The President's Message

By Edward Wilson, CEO and
Acting President, 10,000 Friends of
Pennsylvania

IN THE FACE of current budget constraints, Pennsylvania's state government clearly needs to reduce spending. Whether it should stop making investments is another matter.

On ABC's Sunday morning talk show "This Week" on February 21, **Governor Rendell** argued that governments can't

stop investing just because budgets are tight. Reacting to a congressman's statement to the effect that there should be no more spending and no more borrowing, the governor exclaimed,

"How in God's name does he think we're going to repair this nation's infrastructure, stay competitive, give safety to our people, improve our quality of lives? Every business that's successful in this country has, at some key moment, reinvested in itself, usually by bor-

FUNDED AT THE MODEST RATE OF **\$3 TO 4 MILLION ANNUALLY** IN RECENT YEARS,
 LUPTAP WAS **CUT TO A MERE \$375,000** IN THE FY 2009-2010 BUDGET. **LUPTAP**
 HELPS COMMUNITIES DEVELOP AND IMPLEMENT PLANS FOR COMMUNITY AND ECONOMIC
 DEVELOPMENT, TRANSPORTATION, CONSERVATION, AND INFRASTRUCTURE.

rowing or taking out capital reserves. They reinvested. They created another product line, built a new factory. If you don't invest in your future, you will die."

Rendell appeared alongside **Governor Schwarzenegger** of California, and together they made a bipartisan plea for renewed infrastructure investments by the federal government.

Infrastructure clearly counts as an investment, since it consists of tangible assets that yield benefits far into the future. But other government programs can also properly be viewed as investments if their payoffs outweigh their costs. Consider the Land Use Planning and Technical Assistance Program (LUPTAP), through which the state provides financial and technical assistance to county and local governments in land use and community planning.

Funded at the modest rate of \$3 to 4 million annually in recent years, LUPTAP was cut to a mere \$375,000 in the FY 2009-2010 budget. LUPTAP helps communities develop and implement plans for community and economic development, transportation, conservation, and infrastructure. As research by 10,000 Friends has shown, incentives provided through the program have been very effective in encouraging municipalities to work together in multi-municipal comprehensive plans.

In the long run, LUPTAP likely saves taxpayers far more than it costs. Comprehensive planning and intergovernmental coordination help communities

set the stage for economic development and avoid haphazard development that increases the costs of infrastructure. And it helps leverage money from federal agencies, which increasingly are relying on sound planning at the regional level to guide their funding decisions. As Grant Ervin's article in last month's E-Update argued, Pennsylvania missed out on federal high speed rail funds because the necessary plans were not in place. For the same reason, Pennsylvania fared poorly in competing with other states for the recently awarded TIGER (Transportation Investment Generating Economic Recovery) grants. Just at the time when the federal government is rewarding sound regional planning and coordination, is it wise for Pennsylvania

to gut the one state program that supports such activity?

To be sure, the difference between spending and investing is not always obvious. One person's investment can be another's boondoggle. It's up to the legislators to weigh the arguments and make the hard decisions about how to divide a shrinking pie.

In doing so, lawmakers owe it to their constituents to examine each program carefully and consider whether cutting it is truly the most prudent decision. In each case, they should be debating whether the program is truly an investment, and whether cutting it might cost us all more in the long run. The fact is that some budget cuts are penny wise and pound foolish. Ignoring that reality is fiscally irresponsible. ♦

Grant Ervin's article is available at <http://10000friends.org/news/did-high-speed-rail-funds-bypass-pennsylvania>

PA CHAPTER ANNUAL AWARDS

Applications Now Available

best &
brightest
2010

The best and the brightest plans and planners are recognized each year by their peers through the highly competitive PA Chapter Awards Program. The annual awards application is now available online at www.planningpa.org or by calling the PA Chapter office at 717-671-4510. The deadline for this year's awards applications is Friday, May 21, 2010. The winners will be announced at the Annual Awards Program, scheduled for Tuesday, October 5, 2010 during the PA Chapter Annual Conference. Many thanks to Brian O'Leary, AICP and the Awards Committee members for their commitment to this program each year!

deadline 05.21.10

EPD
ENVIRONMENTAL
PLANNING & DESIGN, LLC
Landscape Architects
Community Planners
Urban Designers



100 Ross Street
Pittsburgh, PA 15219
(412) 261-6000
www.epd-pgh.com

Planning for a Sustainable Future

Harrisburg
Chambersburg
Clearfield Lancaster
Philadelphia
Pittsburgh
State College
Valley Forge

www.gannettfleming.com
(717) 763-7211



Gannett Fleming

Mark Your Calendars Now!
10.3-5.2010

The 2010 Pennsylvania Chapter of the American Planning Association Annual Conference will be held October 3 to 5 at the Lancaster Marriott at Penn Square in Lancaster, PA.



CONFERENCE

CULTIVATE!

BICKEL INDUCTED

Richard G. Bickel, AICP inducted to the AICP College of Fellows

THE PA CHAPTER BOARD of Directors is pleased to announce that member **Richard G. Bickel** will be inducted to the AICP College of Fellows at the APA National Planning Conference in New Orleans. Mr. Bickel is one of just **37 AICP members** selected in 2010 for this honor. The distinguished College of Fellows numbers just shy of 450 members; they represent the **top echelon of the American Planning Association** whose total membership is 43,000 and includes 13,083 active AICPs.

As the American Planning Association notes, "Election to Fellow is one of the highest honors that the American Institute of Certified Planners bestows upon a member."

Mr. Bickel receives this honor in recognition of his achievements in planning, and as such is elevated before the public and the profession as a model planner who has made significant contributions to planning and society. Fellowship is granted to planners who have been members of AICP and have achieved excellence in professional practice, teaching and mentoring, research, public and

community service, and leadership.

Members of the College of Fellows are concerned with mentoring and future advancement of the profession of planning. As outstanding professionals in the field of planning, Fellows of AICP address student organizations, state APA conferences, and professional development programs.

Speaking on Mr. Bickel's impact in planning, **Kenneth B. Hughes, AICP**, Director of the Montgomery County Planning Commission, shares, "I have found Rich to be the ultimate professional planner — one who is fair, unbiased, innovative, and practical, always seeking to properly balance the true needs of the community he served with the reality of achievable goals. He has advocated for what is right and sustainable, even if it was not locally popular, and his work has made a difference."

PA Chapter of APA members, including chapter president **Alexander J. Graziani, AICP**, look forward to honoring Mr. Bickel and his colleagues at the 2010 class ceremony on Saturday, April 10 at the Hotel Mon-

teleone in the French Quarter. "This honor means that Rich is one of the best of our profession. We congratulate him on this recognition of the positive impact he has had on communities throughout Pennsylvania and New Jersey" shares Mr. Graziani.

Mr. Bickel is Director of the Planning Division for the Delaware Valley Regional Planning Commission based in Philadelphia, PA. Additionally Mr. Bickel chairs the Legislative Committee for the PA Chapter of APA. He holds both an undergraduate degree and a planning master's degree from the University of Pittsburgh, and resides with his wife in Ardmore, PA.

Additional Honors for Richard Bickel at APA's National Planning Conference

In addition to his induction to the AICP College of Fellows, Mr. Bickel will also be honored as the Outstanding Site Visitor of the Year — Planning Practitioner by the Planning Accreditation Board (PAB). The PAB ensures high quality education for future urban planners. Accreditation is a system for rec-

ognizing educational institutions and professional programs for performance, integrity and quality. These accreditors establish criteria for accreditation, arrange site visits, evaluate institutions and professional programs, and confer accreditation.

Serving as a Site Visitor can be an extremely rewarding experience. It provides the opportunity to visit universities around the country; meet planners, educators, students and community leaders; and gather new ideas and perspectives on planning. While a rewarding experience, a Site Visit requires team members to cover a lot of ground in a short period of time. Site Visit Teams are comprised of three team members — two educators, one practitioner — with one member designated as the Site Visit chair.

The PAB recognizes two Site Visitors annually, one educator and one practitioner, for their outstanding contributions to PAB's mission of ensuring the high quality of planning education.

Our congratulations to Rich Bickel on these outstanding recognitions! ♦

LEGISLATIVE BOX SCORE

KEY TO COMMITTEE ABBREVIATIONS: AGR–Agriculture and Rural Affairs; APP–Appropriations; CED–Community and Economic Development; COM–Commerce and Economic Development; ERE–Environmental Resources and Energy; FIN–Finance; G&F–Game and Fisheries; LAB–Labor Relations; LOC–Local Government; RUL–Rules; STA–State Government; TOU–Tourism and Recreational Development; TRN–Transportation; URB–Urban Affairs and Housing

		PRIME SPONSOR	HOUSE ACTION	SENATE ACTION	GOVERNOR'S ACTION
HB 60	Amends Housing Finance Agency Law to establish the Affordability and Rehabilitation Enhancement Program	Daley George	On House floor Recommitted to House ERE		
HB 1489	Imposes a severance tax on natural gas extraction from the Marcellus Shale		Passed 111-82 Senate LOC	Senate LOC	
HB 1831	Amends MPC to provide for review fees	Houghton			
SB 552	Amends MPC to provide for educational impact fees in certain school districts	Rafferty			
SB 1256	Amends KOZ law to extend dates for application for unoccupied parcels	Stack			



THIS MONTH WE'RE TAKING A LOOK at some common questions PA Chapter members ask about the CM credit program.

✓ Why aren't the sessions at a conference registered for CM credits?

This is a very common question! Many affiliate organizations in PA offer conference sessions with excellent planning content. AICP members are attending these events and would like to obtain CM credit for these sessions. But frequently the sessions are not approved for CM credits. "Why" many members ask? There are two primary reasons:

- **Organizations may not be aware of CM since it is a fairly new continuing education program. They also may not realize the value of CM for the AICP members who are attending their conference. Individual AICP members can have an impact in this area by communicating the need for CM approved sessions. Request credits at the conferences they attend. The more these organizations hear from you, the more likely they will pursue CM credit for courses.**
- **Management of CM credit for conference sessions is a process that involves application fees and staff time. As the program grows and organizations gain awareness of its value, expect to see more organizations offering CM credits. Again, this is an area where individual AICP members can help organizations see the need by voicing their requests for CM approved sessions.**

✓ Can I earn CM credits for a worthy session that is not approved for CM credits?

Absolutely! AICP offers an option to self-report up to 8 credits per 2-year reporting period. Please take advantage of this option for planning sessions you attend that do not have CM approval. The process for self-reporting credits is straightforward. See the AICP Certification Maintenance section of APA's website for more information, www.planning.org/cm. ♦

EVENTS & Training Opportunities

APA 2010 National Planning Conference

April 10-13, 2010, New Orleans, LA, www.planning.org
CM: Earn up to 32 credits

61st Annual Atlantic Builders Convention (ABC)

April 14-16, 2010, Atlantic City, NJ, www.abconvention.com
CM: 8 CM approved courses

PMPEI Train-the-Trainer Course

April 16-17, 2010, State College, PA, www.planningpa.org.

Business of Brownfields 2010 Conference

April 19-21, 2010, Pittsburgh, PA, www.eswp.com/brownfields

2010 Good Jobs, Green Jobs National Conference

May 4-6, 2010, Washington, DC, www.greenjobsconference.org

Creating Healthy, Livable Communities for all ages: From Theory to Reality

May 5-7, 2010
Presented by the Delaware Chapter of APA, Dover, DE
www.delawareapa.org
CM: multi*

PA GIS Conference 2010

May 11-12, 2010, Johnstown, PA, www.pagisconference.org

Reinventing Older Communities

May 12-14, 2010, Philadelphia, PA, www.philadelphiafed.org
CM: 11.25 credits available

PA Chapter of APA Annual Conference

October 3-5, 2010, Lancaster, PA, www.planningpa.org
CM: Approximately 13 credits available

PDOCORNER

by Susan Elks, AICP, PA Chapter Professional Development Officer

CM Deadline is April 30, 2010:

Once again, a last reminder that the deadline for the first reporting cycle of CM has been extended to April 30, 2010 for those members who had not met the requirement of 32 credits. If you have questions or need assistance, please feel free to contact the Chapter office or myself selks@chesco.org, 610-344-6285. The PA Chapter's website, www.planningpa.org, and its Calendar of Events, remains the most current source for upcoming training of all types in Pennsylvania.

AICP Exam Updates:

The spring AICP exam testing window is set for May 10-24, 2010. The PA Chapter held its annual in-person, all-day prep session on March 6, 2010 at

Temple University's Harrisburg campus. The session drew 18 attendees from across Pennsylvania and Maryland, and was well received. Many thanks to the session presenters: Jessica Fieldhouse, Tara Hitchens, Christine Bartleson, and Dave McFarland. If you plan to take the exam in November, the application window will open in mid-June, and the PA Chapter will host a webcast prep session in the fall. Information on two scholarships for the fall test will be posted to the PA Chapter website prior to the application window. The scholarships reduce the fee from \$485 to \$125, and are open to anyone, with an emphasis on financial need.

Help Grow the Chapter's AICP Study Materials:

Speaking of the AICP Exam, if

you have taken the exam in the past and are wondering what to do with your study materials, the Professional Development Committee would love to **grow our lending library for planners studying for the AICP exam**. If you have any study materials that you are willing to part with, please contact myself or the Chapter office. We are most interested in: The Practice of Local Government Planning (Green Book), 3rd or 4th editions; Everyday Ethics for Practicing Planners by Carol Barnett; or the AICP Exam Prep 2.0. Thank you in advance for your willingness to share your materials.

Webcast Series – Free CM Approved Sessions:

The free Friday webcast series is continuing, with sessions being

added on different days of the week to accommodate the many topics being offered. The PA Chapter presented two sessions on historic preservation in February, with Michel Lefevre of the Pennsylvania Historical and Museum Commission (PHMC) presenting on the roots of historic preservation and Andrea MacDonald (PHMC) and Carole Wilson (Lancaster County Planning Commission) presenting on best implementation practices. Despite audio difficulties that are too frequently an issue on the webcasts (don't forget that the webcast series is put on by volunteers!), the presentations received a great deal of favorable feedback. Registration information for upcoming webcasts can be found at the PA Chapter's online events calendar. ♦

NEWS&NOTES

PA Chapter of APA Hosts 2 Nationwide Webcasts

Thank you to the following PA Chapter members who presented in the national webcast series on behalf of the Chapter:

Historic Preservation I

Michel Lefevre, AICP –
Pennsylvania Historical and Museum Commission

Historic Preservation Part II: Implementation

Carole Wilson – *Lancaster County*
Andrea MacDonald –
Pennsylvania Historical and Museum Commission

Presentation materials for both webcasts are available. Visit the Chapter website for a link to the Power Points and more, www.planningpa.org.

PA Chapter of APA Represented during PEMA Update of the State All-Hazard Mitigation Plan

John Pickett, AICP, PE is representing the PA Chapter of APA on the PEMA update of the State All-Hazard Mitigation Plan. This federally-mandated activity is the update to the current 2007 State Hazard Mitigation Plan and will be the blueprint for further reducing property damage and saving lives from the effects of future natural and human-made disasters within the Commonwealth.

PA Chapter Participates in EarthFest at Temple University Ambler

The chapter will participate in EarthFest at Temple University Ambler on Friday, April 23, 2010. The mission of EarthFest

is to promote environmental awareness using sustainable concepts, methods, and practices to protect and preserve our environment. Organizations, businesses, colleges, high schools, middle schools, and elementary schools, and individuals demonstrate sustainable concepts and technologies, and provide interactive educational displays, activities, and much more! Thank you to Brian O'Leary, AICP of Southeast Section for coordinating our booth at this event! For more information about EarthFest visit their website at www.temple.edu/ambler/earthfest.

PA Land Choices to be Honored at Washington, DC Gala

The Appalachian Trail Conservancy, in partnership with the National Park Service and UPS, is hosting its first Gala on April 21, 2010 in Washington, DC. The theme of this event is

"Engaging Youth in the Outdoors," and they will be honoring one partner from each of the following: National Park Service, U.S. Forest Service, a trail state agency, a school, and an affiliated trail club. Estelle Ruppert of PA Conservation and Natural Resources was selected as the state partner for her enthusiastic and exceptional leadership in the "Trail to Every Classroom" program, known in the Commonwealth as PA Land Choices. For more about PA Land Choices and its impact on teaching the importance of land use planning, please see the February 2010 issue of *The Vantage Point*. As the invitation letter notes, "Estelle has been a leader in the program since 2007. Teachers cannot say enough wonderful things about her – our evaluations are full of glowing reviews of her sessions. We are so pleased to honor Estelle's efforts." Congratulations to Estelle and the PA Land Choices program. ♦

PMPEI

PA Municipal Planning Education Institute Schedule

PMPEI offers in-depth, stimulating, and interactive educational experiences for citizen planners, zoners, appointed and elected municipal and county officials, and professionals involved in planning. For more information, including course descriptions and registration details, visit www.planningpa.org. Click on "PMPEI" on the right side of the page.

COMMUNITY PLANNING

Berks County
Reading (Rockland Professional Center, 13th & Rockland Streets, Reading)

May 19, May 26, June 2
Contact: John Kramer,
610-921-7246

Montgomery County
Upper Merion Township (Upper Merion Twp. Bldg, 175 W. Valley Forge Rd., King of Prussia)
April 26, May 10, May 24
Contact: Rita McKelvey,
610-278-3753

York County
York (York Co. Office of Emergency Operations, 120 Davies Drive, York)
April 8, 15, 22
Contact: Terri Dickow
1-800-232-7722 ext. 42

ZONING

Bucks County
Doylestown (Penn State Cooperative Extension, Neshaminy Manor Center, 1282 Almshouse Rd., Doylestown)

April 21, April 28, May 5
Contact: Terri Dickow
1-800-232-7722 ext. 42

SUBDIVISION & LAND DEVELOPMENT REVIEW

Chester County
West Chester (WCU Graduate Business Center, 1160 McDermott Dr., West Chester)
May 6, 13, 20
Contact: William Stevens
484-354-3158

ZONING ADMINISTRATION

Dauphin County
Hummelstown (Municipal Building 136 S. Hanover Street, Hummelstown)
June 2, 9, 16
Contact: Terri Dickow
1-800-232-7722 ext. 42

Luzerne County
Hazleton (Eagle Rock Resort-Base Lodge, 1031 Valley of Lakes, Hazleton)
April 24, May 1, May 8
Contact: Terri Dickow
1-800-232-7722 ext. 42

Congrats!

Congratulations to Pennsylvania's newest members of the AICP. The following planners attained their AICP at the November 2009 exam:

MANY THANKS TO THE MEMBERS of the PA Chapter Professional Development Committee for their ongoing efforts in providing exam preparation support through study notes, website resources, and a prep session.

Carl Bergamini, AICP
Sarah Liying Chiu, AICP
William Cromie, AICP
Martine Decamp, AICP
Derek Eversmann, AICP
Andrew Goodman, AICP
Liang Guo, AICP
Robert Hosking, AICP

Evangeline Linkous, AICP
Tom Maggio, AICP
Abigail Mountain, AICP
Robert Pfaffmann, AICP
George Pomeroy, AICP
Jeffrey Slack, AICP
Angela Watson, AICP
Irene Woodward, AICP

News & articles

for *The Vantage Point*



We are always seeking articles on current planning topics and planning news!

The Vantage Point is published bimonthly and contributions that are timely, newsworthy, and of statewide interest are welcome. Dated material should be submitted well in advance according to our deadlines below. Submitted articles of 500 words or less in length should be sent by email to address below. Articles that include artwork, illustrations or photographs will receive first consideration. Images must be scanned at 300 dpi with a print size of at least 2.5 inches wide. The author's name, position, and employer's name and city must also be included to ensure proper credit. Shorter articles and announcements of 100-150 words are also welcome.

DEADLINES FOR UPCOMING ISSUES:

June: May 7, 2010

August: July 9, 2010

October: September 3, 2010

December: November 12, 2010

Submit to: sgalbraith@shermer-assoc.com ♦

Architects Engineers Surveyors

YOUR VISION. MADE REAL.



TOLL FREE 877.323.6603

Mechanical Engineering ■ Construction Inspection
Highway Design ■ Structural Engineering ■ Bridge Design
Bike Path & Trail Design ■ Electrical Engineering ■ Surveys
Landscape Design ■ Building Design ■ Feasibility Studies

www.larsondesigngroup.com

Larson Design Group •

HEADQUARTERED AT 1000 Commerce Park Drive, Suite 201 ■ Williamsport, PA 17701
OFFICES AT Bloomsburg, PA ■ Selinsgrove, PA ■ Ephrata, PA ■ Bethel, PA ■ Corning, NY



All Roads Lead To TRG!

Specializing in the following areas:

- Traffic Engineering
- Transportation Planning
- Highway/Roadway Design
- Site Traffic Development
- Traffic Signal Design & Operations
- Parking Studies
- Expert Consultation

Celebrating 20
years of success!

204 North George Street • Suite 110 • York, PA 17401-1108
T: 717-846-4660 • F: 717-846-4858
www.consulttrg.com



Making Great Communities Happen

587 James Drive
Harrisburg, PA 17112

logon
www.planningpa.org

Non Profit Org.
U.S. Postage
PAID
Harrisburg, PA
Permit No. 561

LANCASTER CENTRAL MARKET Selected as One of APA's Great Public Spaces

In the fall of 2009 Lancaster Central Market was one of ten community locations selected by APA as Great Public Spaces in America. The Market was featured in the "Great Places in America" article in the December 2009 issue of Planning.

LANCASTER'S CENTRAL

Market dates back to the city's founding in 1730, making it one of the nation's oldest public markets (the oldest in the same location). **Andrew Hamilton**, who laid out the original town plan, included a lot for the market adjacent to the town square. Since 1889, the market has been housed in an elaborately detailed, redbrick, Romanesque revival building that was added to the **National Register of Historic Places in 1972**.

The market is open Tuesdays, Fridays, and Saturdays. Manager **Michael Ervin** notes: "Central Market is not just a place to shop. It's an experience," a place where residents do as much socializing as they do shopping.

Most of the vendors – 57 at this time – sell locally grown or prepared foods, including such regional specialties as scrapple, headcheese, and chowchow. They represent many nationalities and groups, with Amish and Mennonite farmers in the majority. Some 3,000 customers patronize the market every week. Over 80 percent of them live or work in Lancaster (pop. 55,000), many within walking distance of the market.

Over the years, Central Market has faced competition from privately owned markets and, more recently, suburban supermarket chains. But with the help of city subsidies, it has managed to hold its own.

The Central Market master

plan, completed in 2005, recommended that a non-profit entity be established to manage and promote the market. The following year, the city council created the **Central Market Trust**, which has secured some \$1.3 million in public and private funds for building maintenance and improvements. The non-profit **Friends of Central Market** was founded in 1997 to raise awareness of the market through activities like the current "buy fresh, buy local" campaign, held in coordination with the Local Economy Center of



"Buy fresh, buy local" at Lancaster's historic Central Market, housed in a magnificent Romanesque revival building.

Franklin and Marshall College, with assistance from the Library System of Lancaster county. ♦

This article is reprinted with permission from Planning "Great Places in America" copyright December 2009 by the American Planning Association, Suite 1600, 122 South Michigan Avenue, Chicago, IL 60603-6107.