

ACTIVE ALLEGHENY

A Commuter Bicycle, Pedestrian & Complete Streets Transportation Plan for Allegheny County

An Implementation Activity of



American Planning Association
Pennsylvania Chapter Annual Conference
October 16, 2012

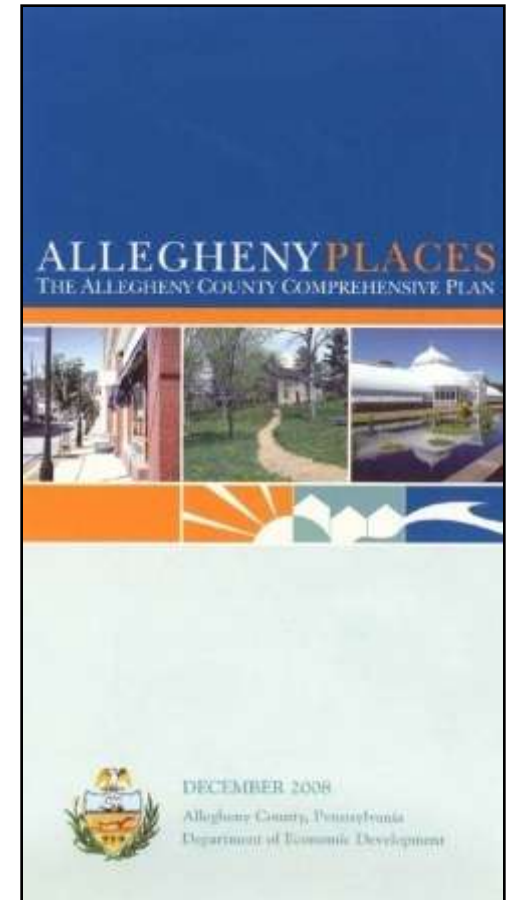
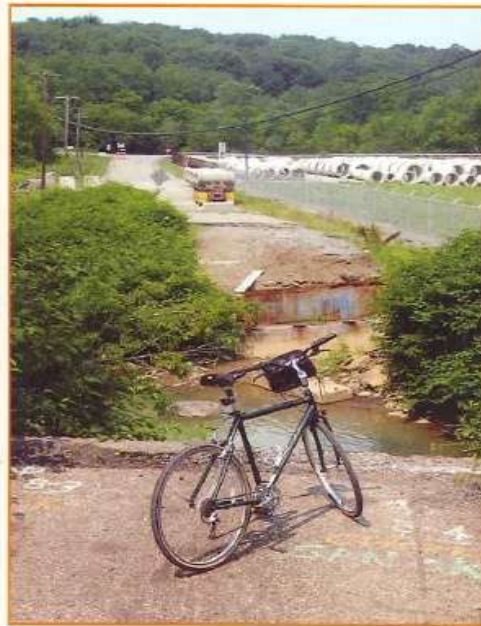
ALLEGHENYPLACES

The Allegheny County Comprehensive Plan

- Established a vision & a roadmap to accomplish the plan
- ‘Transportation Element’ has general actions for commuter bicycle & pedestrian accommodation & complete streets

RECOMMENDATIONS FOR BICYCLE AND PEDESTRIAN FACILITIES

- A. Provide Integrated Transportation Alternatives Including Bikeways, Sidewalks, and Transit – Bicyclists and pedestrians should be encouraged through incorporating bicycle lanes and sidewalks into both roadway and transit projects.
- B. Coordinate Transportation Systems and Modes to Increase Mobility – Increasingly, the need to integrate walking and bicycling with transit usage is being recognized, as is the need to provide ways to commute by bicycle. Roadway shoulders should be paved, routes suitable for bicycling should be identified, and the routes signed accordingly.



ACTIVEALLEGHENY:



- Enriches the Transportation Element of ALLEGHENYPLACES
- Identifies & prioritizes specific Active Transportation action items
- Advances ALLEGHENYPLACES vision in a ‘placemaking’ context
- Enhances ‘Places’ where people live, learn, work, invest & play

ACTIVEALLEGHENY & ALLEGHENYPLACES

TODAY'S LEARNING OBJECTIVES

- 1) To understand how active transportation planning can save money, promote healthy lifestyles, reduce congestion, create more vibrant and safe communities, and promote economic development.
- 2) To learn methods of involving various stakeholders such as planning professionals, local agencies, active transportation enthusiasts and other interested residents in the planning process.
- 3) To understand how active transportation planning assists in promoting “placemaking”.



SUSTAINABILITY

through **PLACEMAKING** for the County's bright, vibrant & sustainable future by integrating new & redevelopment activities into our established communities, while maintaining & respecting their character & history



ACTIVEALLEGHENY

SMART TRANSPORTATION components must integrate & connect with many **Land Use Elements**

Environment

-

Economic Development

-

Housing

-

Parks, Open Space & Greenways

-

Community Facilities

-

Sustainable Energy Resources

-

Historic & Cultural Assets

-

Equity & Diversity Considerations



ACTIVEALLEGHENY

**Provides for sustainable
travel choices
to destinations**

-

**It is a blueprint for improved
access & choices
connecting people to
communities, work sites,
transit, schools, attractions &
residences**



Goal

To integrate non-vehicular modes of transportation, specifically walking and biking, into the transportation system through creation of an **ACTIVE Transportation** plan

Primary Objective

To accommodate and encourage walking and biking as an integral part, and common means, of getting around in Allegheny County



ACTIVE ALLEGHENY GOAL & OBJECTIVE

BENEFITS & REWARDS of ACTIVE TRANSPORTATION

- Vehicle, fuel & maintenance cost savings
- Reductions in congestion & emissions
- Low-cost exercise & healthier lifestyles
- A more vibrant & safe community with neighbors out-on-the-street
- An increase in neighborhood vitality, value, desirability & development activity
- More modal choices attract investment



BENEFITS & REWARDS of ACTIVE TRANSPORTATION

■ Add...



Luxury 3-Story Townhome Condos

BroadviewMews

Gateway to Grandview



Go Green. Keep your car in the garage and walk.

Walkable Urban Starting in the Low 200's!

- 2/3 Bedrooms
- 2.5 Baths
- 2-Car Garage
- Stainless Steel Appliances
- High-end Finishes
- Laundry Room on Bedroom Level

Visit www.BroadviewMews.com for more information or schedule a tour by contacting Jane or Martha at 614-324-4066.

The Jane Coughlin Team,
Coldwell Banker King Thompson



Source: H. Bowden, Ohio
Department of Transportation



■ Themes

- Connectivity
- Access
- Mobility
- Health



■ Specialized Components

- Commuter Bicycle Plan
- Pedestrian Plan (Walk & Roll)
- Complete Streets Plan
- Action Plan
- Related Maps



FIVE ELEMENTS OF THE PLAN



- **Bike Allegheny** – Dedicated or shared commuter bikeway connections to activity centers and other transport modes. Major arterial bicycle corridors & routes are identified. Facilitates incremental actions, by various groups, to connect individual neighborhoods or sites & then connect all those facilities to a main bike network system.
- **Walk & Roll Allegheny** – Improved walking routes to increase connectivity & mobility, including ADA access. Many gaps where pedestrian accommodation is needed are included.
- **Other Active Transportation** – Access for all modes; kayaks, skateboards...
- **Complete the Street** – Provides prototypes for three “Complete Streets” projects which accommodate pedestrians, bicyclists, transit, cars & other vehicles.
- **Action for Active Transportation** – The implementation action plan, with prototype cost estimates & suggested funding opportunities.



LINKING TRANSPORTATION, PLANNING, ENVIRONMENT & LAND USE, IS KEY



TO ACHIEVING CONNECTIVITY & TO ACCOMMODATE ACTIVE
TRANSPORTATION, IT IS NOW A FEDERAL/STATE FUNDING REQUIREMENT

SUSTAINABILITY

ACTIVEALLEGHENY:

- Upgrade & accommodate non-motorized travel modes
- Integrates ALLEGHENYPLACES guiding principles
- Integrates “PA Smart Transportation Principles”
 - Cost-effective solutions
 - Context-sensitive design
 - Network upgrades/LOS benefits
 - Safety benefits
 - Intermodal connectivity
 - Leverage & preserve existing assets
 - Quality of life benefits
 - Partnership opportunities
 - Implementation tracking

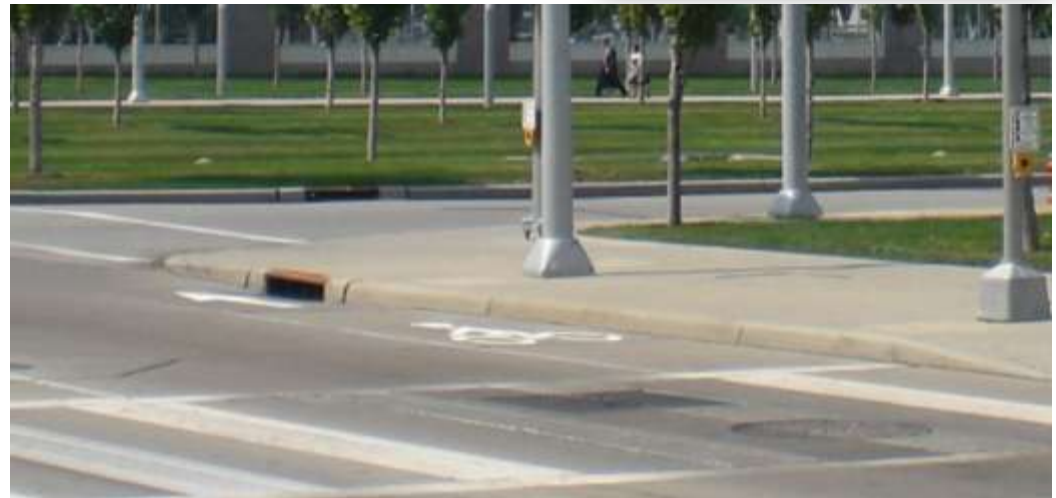


RESOURCE MANUAL

The Plan is a design resource manual for active transportation initiatives

Each plan element discusses:

- Potential opportunities
- Recommends system improvements
- Proposes policies, models & programs for use by agencies, governments & interest groups



DEVELOPING THE PLAN...

ACTIVE ALLEGHENY

FIRST DOCUMENT EXISTING CONDITIONS; THEN FIND OUT WHAT COUNTY RESIDENTS WANT




Public Transportation and Multimodal Open End II, Contract #358R10




PUBLIC OUTREACH

WEBSITE

ACTIVEALLEGHENY





A Comprehensive Commuter Bicycle and Pedestrian Transportation Plan for Allegheny County



AN IMPLEMENTATION ACTIVITY OF
ALLEGHENYPLACES
THE ALLEGHENY COUNTY COMPREHENSIVE PLAN

[Welcome](#) [Project Information](#) [How You Can Get Involved](#) [Active Allegheny Plan](#) [Additional Resources](#) [Photo Gallery](#)





Welcome . . . to the ACTIVEALLEGHENY website.

I am pleased to have the opportunity to ask you to help develop the County's **comprehensive active transportation plan**. This plan is an enhancement to ALLEGHENYPLACES the County comprehensive plan.

The ACTIVEALLEGHENY plan will integrate walking, biking, and other active, healthy travel modes into the existing transportation system. Planning and prioritizing investment in commuter bike routes and walking facilities will enhance our existing transportation network, and provide sustainable travel mode choices. The plan will be a blueprint for better access to connect our communities, work sites, schools, attractions and homes. Your involvement will help to advance "human-powered transportation" and make Allegheny County more pedestrian and bicycle-friendly.

Dan Owsato,
County Executive

Be Involved

- [Attend ACTIVEALLEGHENY Public Meetings](#)
- Take the ACTIVEALLEGHENY survey (*link will be live on June 23, 2010*)
- [Post Comments on ACTIVEALLEGHENY's Facebook Page](#)
- [Register for ACTIVEALLEGHENY Updates & Meeting Announcements](#)
- [View the ACTIVEALLEGHENY Fact Sheet](#)

Announcements and Items of Interest!

Take our survey (*link will be live on June 23, 2010*). We want to hear your thoughts and opinions about walking, biking, and other active travel



PUBLIC OUTREACH

ACTIVE ALLEGHENY

MANY COMMITTEE, STAKEHOLDER & PUBLIC MEETINGS



PUBLIC OUTREACH

INPUT BY PLANNERS & DISABILITY ADVOCATES





ACTIVEALLEGHENY



Suggest to Friends

Subscribe via SMS

The primary objective of the "Active Allegheny" Plan is to accommodate and encourage walking and biking as an integral part, and common means, of getting around Allegheny County.

2 People Like This



Jake Baechle



Gina Del Vecchio Jensen

Photos

2 albums

See All



Wall Photos
Created 19 hours ago



Photos
Created 19 hours ago

No one has added fan photos.
[Add Photos.](#)

Links

Active Allegheny

Wall

Info

Photos

Discussions

Boxes

Events

>>

Write something...

Attach:

Share

Active Allegheny + Others

Active Allegheny

Just Others



Active Allegheny Active Allegheny Facts



Yesterday at 12:59pm · [Comment](#) · [Like](#) · [Share](#)



Active Allegheny

Active Allegheny

Allegheny County has partnered with PennDOT's Bureau of Public Transportation to develop a comprehensive active transportation plan. The plan's purpose is to integrate travel modes, specifically walking and biking, into the existing transportation system. ...

June 10 at 12:35pm · [Comment](#) · [Like](#) · [Share](#)



Active Allegheny Public Meetings will be held at several transit-accessible locations in an open-house format to receive input from the general public.



Active Allegheny Public Meeting

Thursday, June 24, 2010 at 4:30pm
Carnegie Borough Building, Carnegie, PA

June 10 at 12:32pm · [Comment](#) · [Like](#) · [Share](#) · [RSVP to this event](#)



Active Allegheny Public Meetings will be held at several transit-accessible locations in an open-house format to receive input from the general public.



Active Allegheny Public Meeting

Wednesday, June 23, 2010 at 4:30pm
Point Park University Ballroom, Pittsburgh, PA

June 10 at 12:30pm · [Comment](#) · [Like](#) · [Share](#) · [RSVP to this event](#)



Active Allegheny Please visit us on the web!

Welcome - Active Allegheny

www.activeallegheny.com


Allegheny County has partnered with PennDOT's Bureau of Public Transportation to develop a comprehensive active transportation plan. The plan purpose is to integrate travel modes, specifically walking and biking, into the existing transportation system. ...


June 10 at 12:27pm · [Comment](#) · [Like](#) · [Share](#)




ONLINE ‘SURVEYMONKEY’ SURVEY

ACTIVEALLEGHENY

ALLEGHENYPLACES
THE ALLEGHENY COUNTY COMPREHENSIVE PLAN





Baker

Active Allegheny Community Survey

Introduction/General

Allegheny County has partnered with PennDOT's Bureau of Public Transportation to develop a comprehensive active transportation plan. The primary objective of the "Active Allegheny" Plan is to encourage and accommodate walking and biking as modes of commuting in Allegheny County. A first step in this process is to better understand the experience of those interested in improving bicycle and pedestrian access and mobility. With that in mind, we invite you to complete the following survey which will take approximately 10 minutes.

The survey will be available online for one month from June 23 to July 23, 2010. Information collected will be confidential and used solely for the purpose of developing the Bicycle and Pedestrian ACTIVE ALLEGHENY Plan.

Thank you in advance for taking time to complete this survey. Your responses are greatly appreciated.

1. Where do you live?

Municipality

Other (please specify)

Next



PUBLIC OUTREACH

WHEREVER PEOPLE GATHERED

ACTIVE ALLEGHENY



Booth to collect data on:

Bicycle Facilities Needs

Origin & Destination data

Pedestrian facilities needs



Safety concerns

What 'KIDS' want

Access people want



21

OUTCOME HIGHLIGHTS

Priority BIKING travel upgrades:

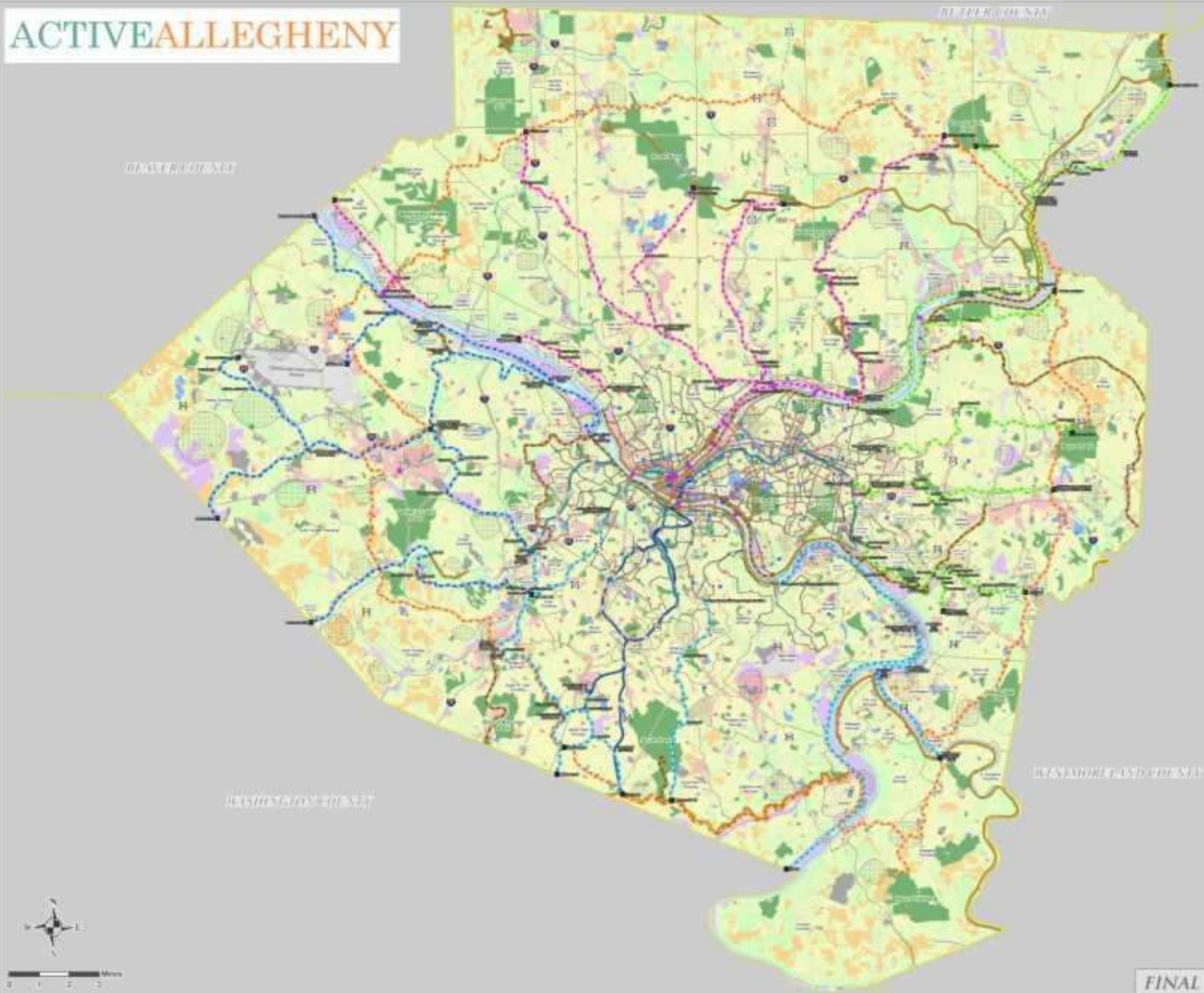
- **Penn Avenue** - Pittsburgh
- **Allegheny River Boulevard** - Penn Hills
- **Route 19** - Mt Lebanon, Pittsburgh, McCandless & Pine



Priority PEDESTRIAN travel upgrades:

- **Route 19** - Mt Lebanon, Pittsburgh, West View & Ross
- **Frankstown Road** - Penn Hills
- **Braddock Avenue** - Braddock & North Braddock





LEGEND

PROPOSED BICYCLE ROUTES

- NORTH BICYCLE ROUTES
- WEST BICYCLE ROUTES
- EAST BICYCLE ROUTES
- SOUTH BICYCLE ROUTES
- CITY BICYCLE ROUTES
- RECREATIONAL ROUTE
- ROUTE TRANSITIONS

TRAILS

- EXISTING TRAILS
- PROPOSED TRAILS
- TRAIL UNDER DEVELOPMENT
- THREE RIVERS WATER TRAIL

TRANSPORTATION

- HIGHER ORDER ROADWAYS
- LOCAL ROADWAYS
- BRIDGES
- BUSWAYS AND STATIONS
- T AND STATIONS

FOCUS AREA ATTRACTORS

- FOCUS AREA BRIDGE
- BIKE RENTAL
- CYCLE TRACK
- SPORTS LEGACY
- HOSPITAL
- SENIOR CENTER
- LIBRARY
- PARK AND RIDE LOTS
- PRIVATE SCHOOL
- PUBLIC SCHOOL
- COLLEGE / UNIVERSITY
- POTENTIAL TOP SITES

PHYSICAL BOUNDARIES

- COUNTY BOUNDARY
- MUNICIPAL BOUNDARIES

WATER FEATURES

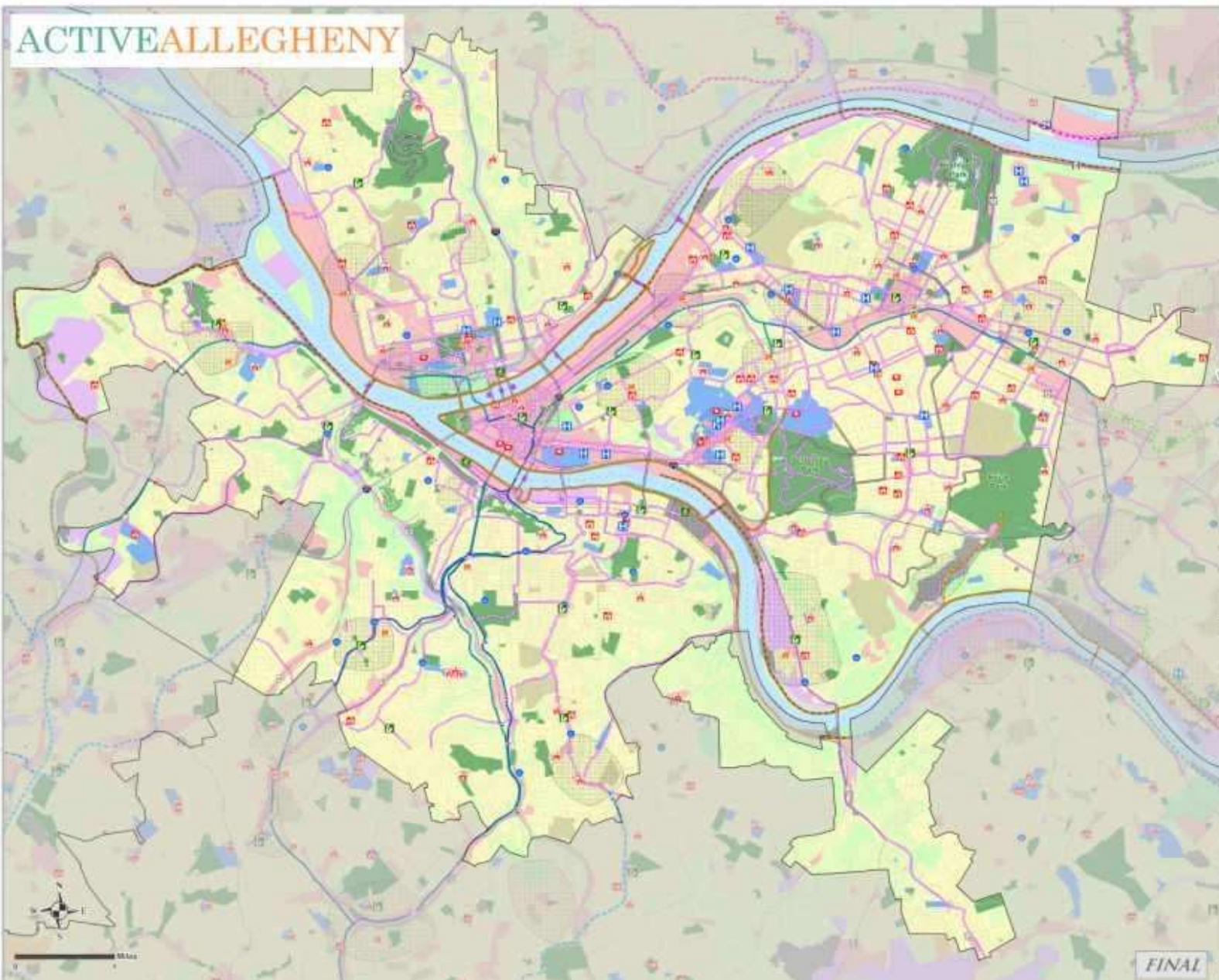
- RIVERS AND LAKES

LAND USES

- ECONOMIC GROWTH AREAS
- RESIDENTIAL
- COMMERCIAL
- INDUSTRIAL
- TRANSPORTATION
- RECREATION / CONSERVATION
- PARKS
- COMMUNITY FACILITIES
- AGRICULTURE
- CEMETERY
- UNDEVELOPED
- VACANT

FINAL

AUGUST 2010 Baker

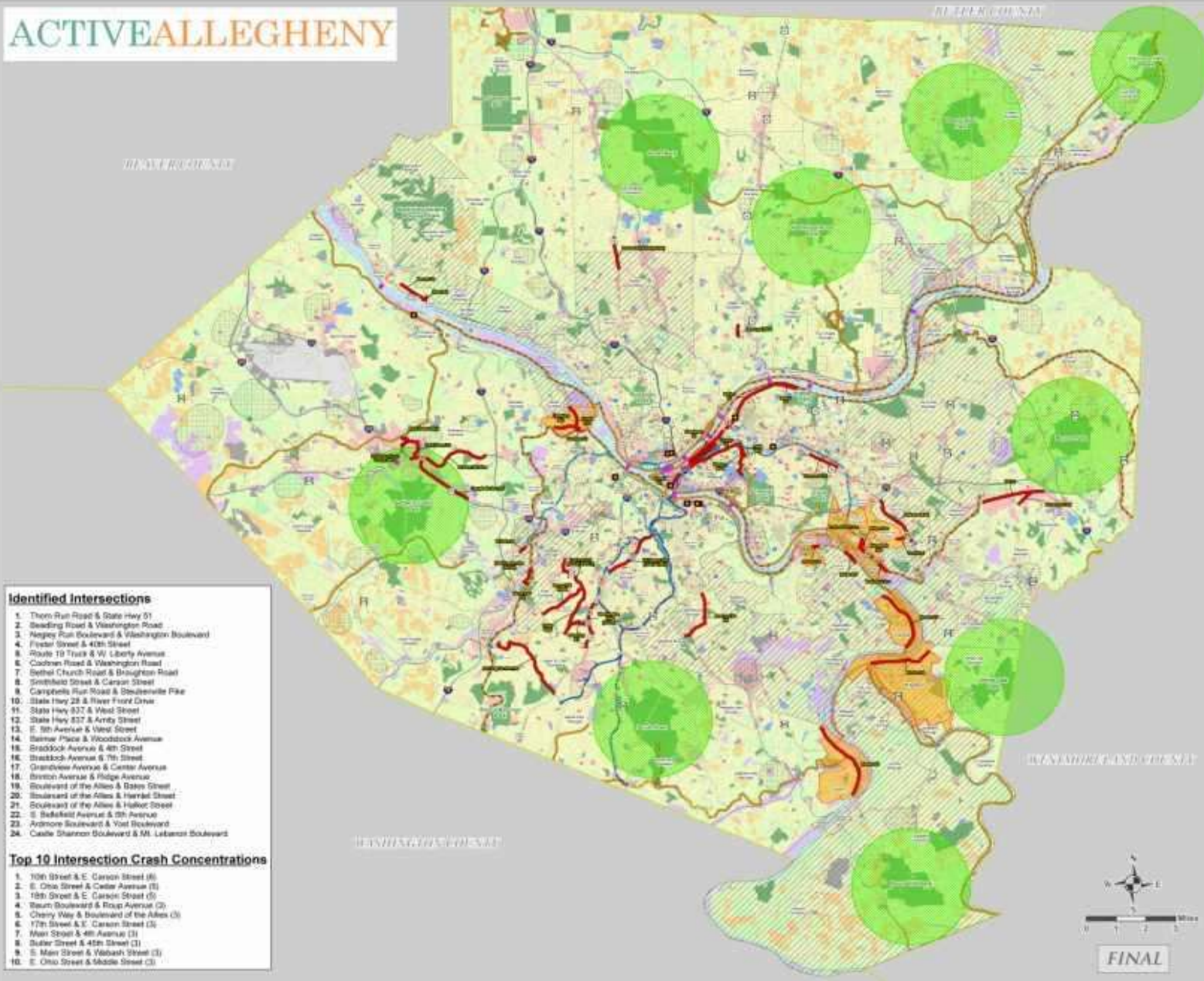


- LEGEND**
- PROPOSED BICYCLE ROUTES**
- NORTH BICYCLE ROUTES
 - WEST BICYCLE ROUTES
 - EAST BICYCLE ROUTES
 - SOUTH BICYCLE ROUTES
- EXISTING FACILITIES**
- BIKE PGH BICYCLE ROUTES
 - CITY OF PITTSBURGH MARKED BIKEWAYS
- TRAILS**
- EXISTING TRAILS
 - PROPOSED TRAILS
 - TRAIL UNDER DEVELOPMENT
 - THREE RIVERS WATER TRAIL
- TRANSPORTATION**
- HIGHER ORDER ROADWAYS
 - LOCAL ROADWAYS
 - BRIDGE
 - BUSWAYS AND STATIONS
 - 7 AND STATIONS
- FOCUS AREA ATTRACTORS**
- FOCUS AREA BRIDGE
 - BIKE RENTAL
 - CYCLE TRACK
 - SPORTS LEGACY
 - HOSPITAL
 - SENIOR CENTER
 - LIBRARY
 - PARK AND RIDE LOTS
 - PUBLIC SCHOOL
 - PUBLIC SCHOOL
 - COLLEGE / UNIVERSITY
 - POTENTIAL TOD SITES
- PHYSICAL BOUNDARIES**
- COUNTY BOUNDARY
 - MUNICIPAL BOUNDARIES
- WATER FEATURES**
- RIVERS AND LAKES
- LAND USES**
- ECONOMIC GROWTH AREA
 - RESIDENTIAL
 - COMMERCIAL
 - INDUSTRIAL
 - TRANSPORTATION
 - RECREATION / CONSERVATION
 - PARKS
 - COMMUNITY FACILITIES
 - AGRICULTURE
 - CEMETERY
 - UNDEVELOPED
 - VACANT

FINAL



ALLEGHENY COUNTY CITY BICYCLE NETWORK



LEGEND

FOCUS AREAS

- PEDESTRIAN INTERSECTIONS
- PEDESTRIAN CORRIDORS
- MAJOR PEDESTRIAN CRASH LOCATIONS
- 3 MILE PARK BUFFER
- LOW INCOME, DISABLED, & MINORITY POPULATION CONCENTRATIONS
- ELDERLY / OLDER ADULT POPULATION CONCENTRATIONS

TRAILS

- EXISTING TRAILS
- PROPOSED TRAILS
- TRAILS UNDER DEVELOPMENT
- THREE RIVERS WATER TRAIL

TRANSPORTATION

- HIGH ORDER ROADWAYS
- LOCAL ROADWAYS
- BRIDGES
- BUSWAYS AND STATIONS
- T AND STATIONS

FOCUS AREA ATTRACTORS

- FOCUS AREA BRIDGE
- BIKE RENTAL
- CYCLE TRACK
- SPORTS LEGACY
- HOSPITAL
- SENIOR CENTER
- LIBRARY
- PARK AND RIDE LOTS
- PRIVATE SCHOOL
- PUBLIC SCHOOL
- COLLEGE / UNIVERSITY
- POTENTIAL TOD SITES
- STOPS

PHYSICAL BOUNDARIES

- COUNTY BOUNDARY
- MUNICIPAL BOUNDARIES

WATER FEATURES

- RIVERS AND LAKES

LAND USES

- (ECONOMIC) GROWTH AREAS
- RESIDENTIAL
- COMMERCIAL
- INDUSTRIAL
- TRANSPORTATION
- RECREATION / CONSERVATION
- PARKS
- COMMUNITY FACILITIES
- AGRICULTURE
- CHARTER
- UNDEVELOPED
- VACANT

- ### Identified Intersections
1. Thorn Run Road & State Hwy 31
 2. Seeding Road & Washington Road
 3. Negey Run Boulevard & Washington Boulevard
 4. Foster Street & 40th Street
 5. Route 19 Truck & W. Liberty Avenue
 6. Coulburn Road & Washington Road
 7. Bethel Church Road & Braughton Road
 8. Smithfield Street & Carson Street
 9. Campbells Run Road & Sheldonsville Pike
 10. State Hwy 28 & River Front Drive
 11. State Hwy 327 & West Street
 12. State Hwy 327 & Arndt Street
 13. E. 9th Avenue & West Street
 14. Salmier Place & Woodstock Avenue
 15. Bradstock Avenue & 4th Street
 16. Bradstock Avenue & 7th Street
 17. Grandview Avenue & Center Avenue
 18. Branch Avenue & Ridge Avenue
 19. Boulevard of the Allies & State Street
 20. Boulevard of the Allies & Hermit Street
 21. Boulevard of the Allies & Hallow Street
 22. E. Bellefield Avenue & 25th Avenue
 23. Ardmore Boulevard & Vogt Boulevard
 24. Castle Shannon Boulevard & Mt. Lebanon Boulevard
- ### Top 10 Intersection Crash Concentrations
1. 10th Street & E. Carson Street (6)
 2. E. Ohio Street & Center Avenue (5)
 3. 18th Street & E. Carson Street (5)
 4. Reart Boulevard & Roup Avenue (3)
 5. Cherry Way & Boulevard of the Allies (3)
 6. 17th Street & E. Carson Street (3)
 7. Main Street & 4th Avenue (3)
 8. Butler Street & 45th Street (3)
 9. S. Main Street & Wabash Street (3)
 10. E. Ohio Street & Middle Street (3)



ALLEGHENY COUNTY

PRELIMINARY SYSTEM IMPROVEMENTS

PEDESTRIAN CORRIDORS AND INTERSECTIONS

COMMUTER BICYCLE IMPROVEMENTS

Mapped proposed bike network:

- Suburban spokes link to City bike routes from all directions
- 90-mile 'bike beltway' route linking County parks & greenways
- Connectivity to busway stations
- Connectivity to commuter trails
- Bike amenities & facilities



Advice on:

- Improved safety
- Road diets
- Barrier-separated bike lanes
- Traffic calming
- Bike sharing
- Cyclovia event
- Bike-friendly employer
- Car-free days



PEDESTRIAN IMPROVEMENTS

Types of Pedestrians

Children

Adults (Age 19-65)

Older Adults (Age 65+)

Pedestrians with Impairments

Ambulatory, Hearing, Vision & Cognitive

Pedestrian Needs

Crosswalks, Signals, Signs,
Continuous Sidewalks, Public Steps or
Ramps, Transit Access & Safety

➔ **When Designing Facilities
Consider Safety, Walking Speed,
Equity, Spatial Needs, Mobility
& Maintenance**



COMPLETE THE STREET

Complete Street

A road that enables safe travel by all users: Walkers, Bikes, Transit & Motor Vehicles

Criteria for Complete Street

- Arterial or collector roadway
- Average daily traffic $\geq 5,000$ cars
 - Traffic volume not at capacity
- At least minimal walking activity
 - On a proposed bike route
 - On an existing transit route
 - Deficient ped/bike facilities
 - In an economic growth area

➔ Plan has a customizable Complete Streets Model Ordinance



ACTIVE ALLEGHENY



COMPLETE STREET PILOT / PROTOTYPE PROJECTS:

- South Braddock Ave - Swissvale
- Broadway Ave - Beechview/Pittsburgh
- Freeport Rd - Blawnox & O'Hara



Broadway has room for bike lanes



Freeport sidewalk on north; most walk on south side

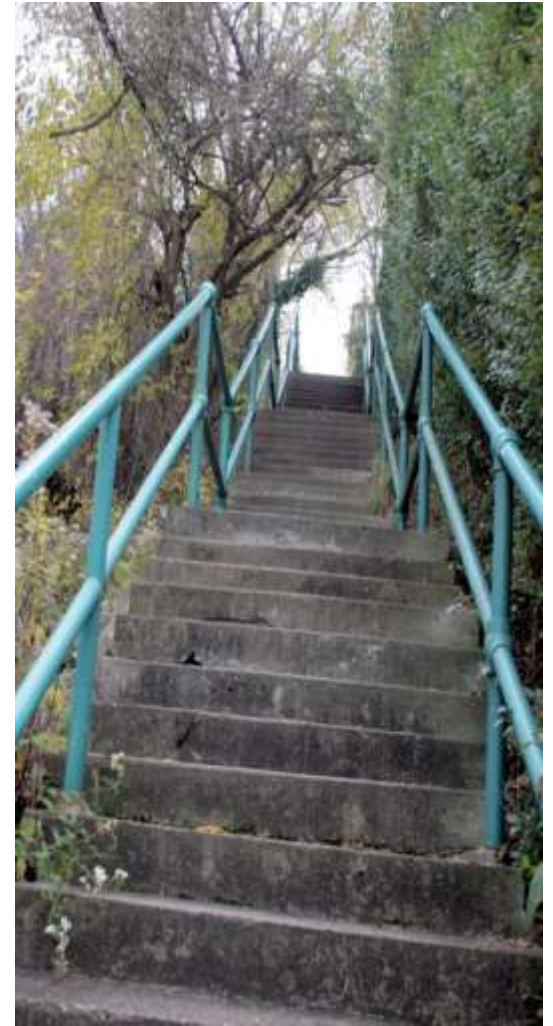


South Braddock sidewalk in poor condition

PLAN TOOLBOXES

Are reference guides defining physical elements for design & engineering with recommended policy & actions

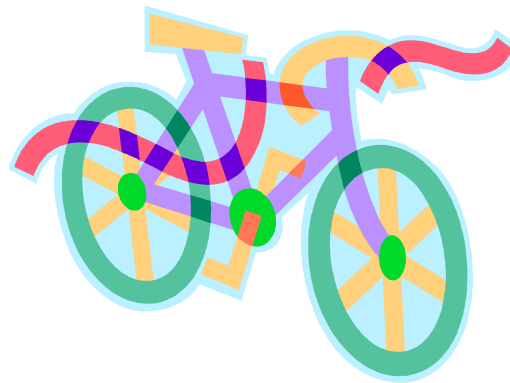
- **Bicycle Facilities Toolbox**
- **Walk & Roll/ADA Toolbox**
- **‘KIDS’ Recommendations**
Tailored to kids needs throughout the plan
- **Complete Streets Toolbox**



BICYCLE FACILITIES TOOL BOX HIGHLIGHTS

Resources for planning & developing bike facilities

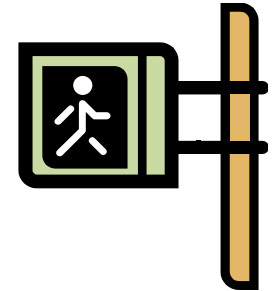
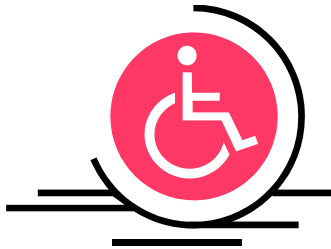
- Bike facility user types & desired access routes
 - Bike facility types & design guidelines
 - Order of magnitude cost estimates
 - Innovative bicycle facilities



PEDESTRIAN & ADA TOOL BOX HIGHLIGHTS

Resources for Planning & Developing Pedestrian & ADA Facilities

- Type of user & desired access
- Deficiencies & Opportunities
- Applicability & design guidelines for:
 - Sidewalks
 - Curb Ramps
 - Crosswalks & Intersection Facilities
 - Signs – Direction & Reflection
 - Traffic Calming & Streetscapes
 - Bus Stops
- Order of Magnitude Cost Estimates



WATER TRAILS & RIVER ACCESS HIGHLIGHTS

IN-LINE SKATING FACILITIES

Resources for Planning & Developing Kayak & In-Line Skate Facilities



- Kayak Rental Locations
- Launching & Docking Locations
- Network of paved paths suitable for in-line skate travel with gaps identified
- Connectivity to various destinations

IMPLEMENTATION ACTIVITY

MOVING PEOPLE NOT CARS

Gil Penalosa '8-80 Cities'
International livability expert
founder Ciclovía
at **cityLIVE!**

-

Panel discussed a growing
projects list:

Bike-Pittsburgh

Allegheny County Health Dept

ACED/ACTIVEALLEGHENY

CMU/Traffic21

City of Pittsburgh





HIGHLIGHTS OF A FEW COMPLETE OR 'IN-PROGRESS' IMPROVEMENTS

- BRT Downtown-to-Oakland/complete streets
- URA Allegheny Riverfront Green Boulevard
- Bike racks on Port Authority buses
- Proposed “Complete Streets”/”Road Diets”
- North Park Lake Loop Road bike/ped upgrades
- Sharrows in the City
- Better bike facilities & amenities
- Bike racks on West Busway
- Proposed bike-share rental program
- County Bridges safety upgrades like “bike-friendly” grate & scupper replacements
- Pittsburgh Ciclovía plans
- & many other projects...

NEXT STEPS

IMPLEMENTATION

Requires actions by many agencies & stakeholders working together to achieve a more walkable & bikeable transportation system

Our topography is famously challenging; so creativity will be key to success



ACTIVEALLEGHENY

Is pleased to be the recipient of a

PennDOT

Pennsylvania Community Transportation Initiative Grant

to fund this plan

&

Airport Corridor Transportation Association (ACTA)

2011 Exemplary Achievement in Planning Award



Questions or Comments?

Lynn Heckman

Assistant Director – Transportation Initiatives

Allegheny County Economic Development

Lynn.Heckman@AlleghenyCounty.US

Max Heckman

Transportation Planning Manager

Michael Baker Jr., Inc.

mheckman@mbakercorp.com



The **ACTIVEALLEGHENY** plan is on-line

www.activeallegHENY.com

Links are on
Allegheny County Website Homepage
ALLEGHENYPLACES E-Library

