

MUNICIPAL PLANNING HOT TOPICS



OCTOBER 4, 2022



PRESENTERS

Patrick Wright, Connects Traffic Engineer
pwright@pennoni.com



PENNDOT CONNECTS

Municipal Resources

Training
Assistance
Online Training
Newsletter
Tech Sheets



<https://www.penndot.gov/ProjectAndPrograms/Planning/Pages/PennDOT-Connects.aspx>



<https://www.penndot.gov/ProjectAndPrograms/Planning/Pages/Land-Use-and-Transportation-Planning.aspx>



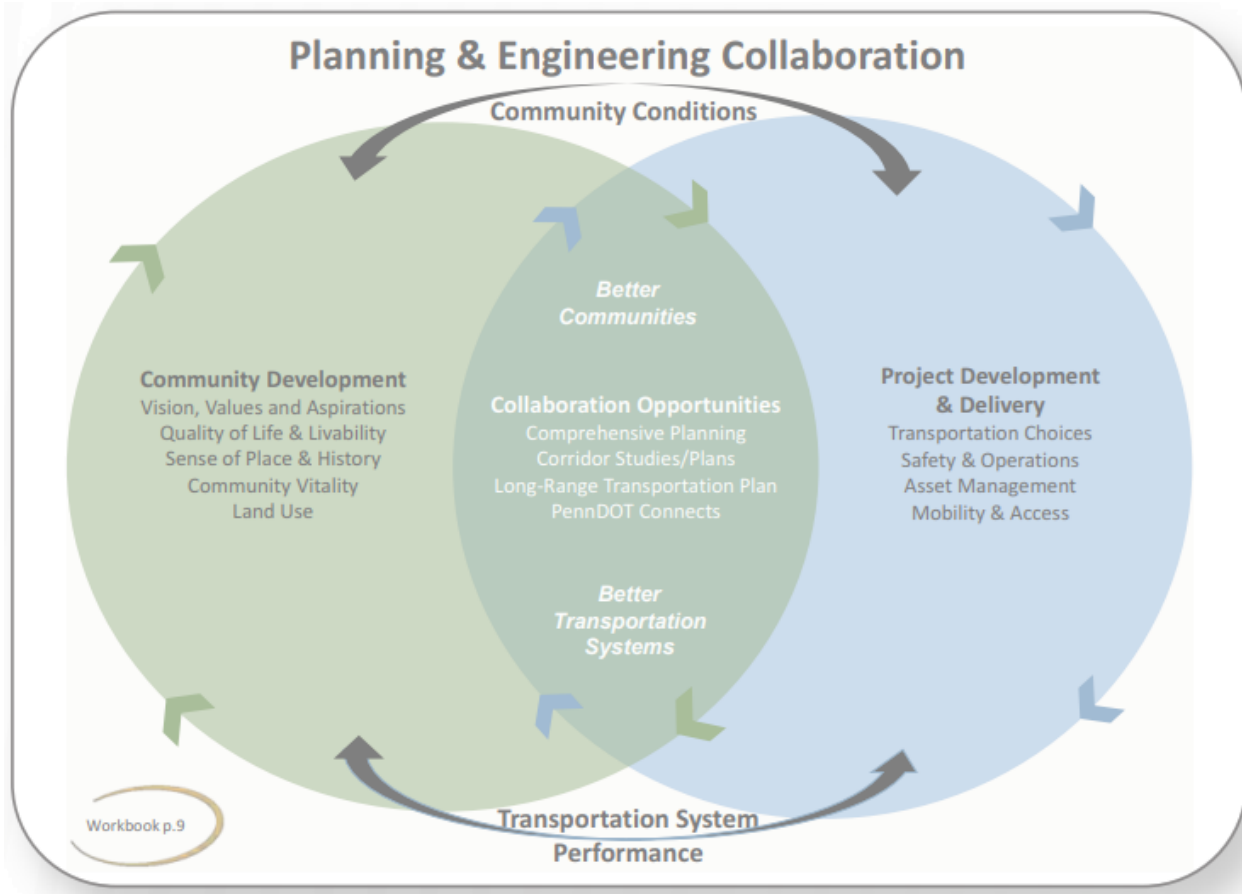
AGENDA

1. Connects Engagement Effort
2. Hot Topics



PART 1: CONNECTS ENGAGEMENT

Part 1: Connects Engagement Effort



IT ALL BEGINS WITH PLANNING.



Goal: Better Communities and Mobility Powered through Collaboration

PennDOT Connects:

- Builds partnerships that invest in sustainable transportation.
- Leverages resources to improve communities.
- Leads and innovates for a more livable Pennsylvania.
- Delivers projects that improve economic competitiveness, access to work, and over all quality of life.

How PennDOT Connects Works

PennDOT and our planning partners meet with local governments to discuss details for each project prior to developing project scopes and cost estimates.

All mobility needs are considered.

- Bicycle
- Pedestrian
- Transit
- Freight
- Operations and ITS
- Utilities
- Community health
- Stormwater management
- Green infrastructure



PART 1: CONNECTS ENGAGEMENT

PennDOT Connects started in 2017

- Raising awareness and understanding of PennDOT Connects and its value.
- Strengthening the state-regional-local partnership approach.
- Encouraging and equipping local government champions to further promote the initiative and its impact.
- Implementing additional networking opportunities to communicate PennDOT Connects broadly throughout the Commonwealth.
- Implementing a training program for municipal officials.
- Providing technical assistance to municipalities to implement PennDOT Connects.



PART 1: CONNECTS ENGAGEMENT

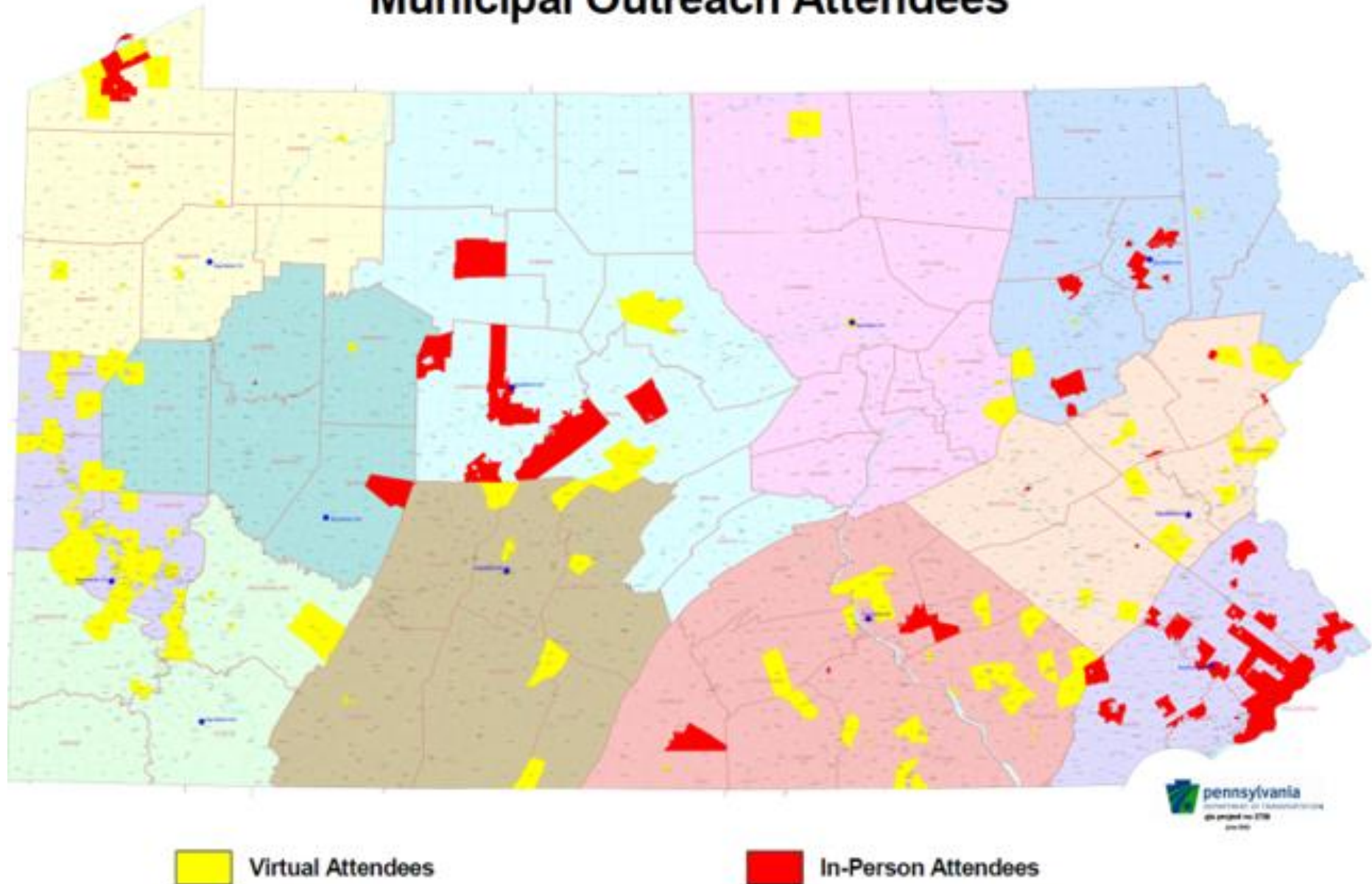
Outreach Sessions Conducted March-May 2022

- In-person/virtual sessions in Districts 1, ,2, 4, 5, 8, and 10
- Virtual sessions in Districts 2, 3, 9, 11, and 12
- 260 municipal participants (195 virtual and 65 in-person)
- 155 MPO/RPO/County/District staff participated



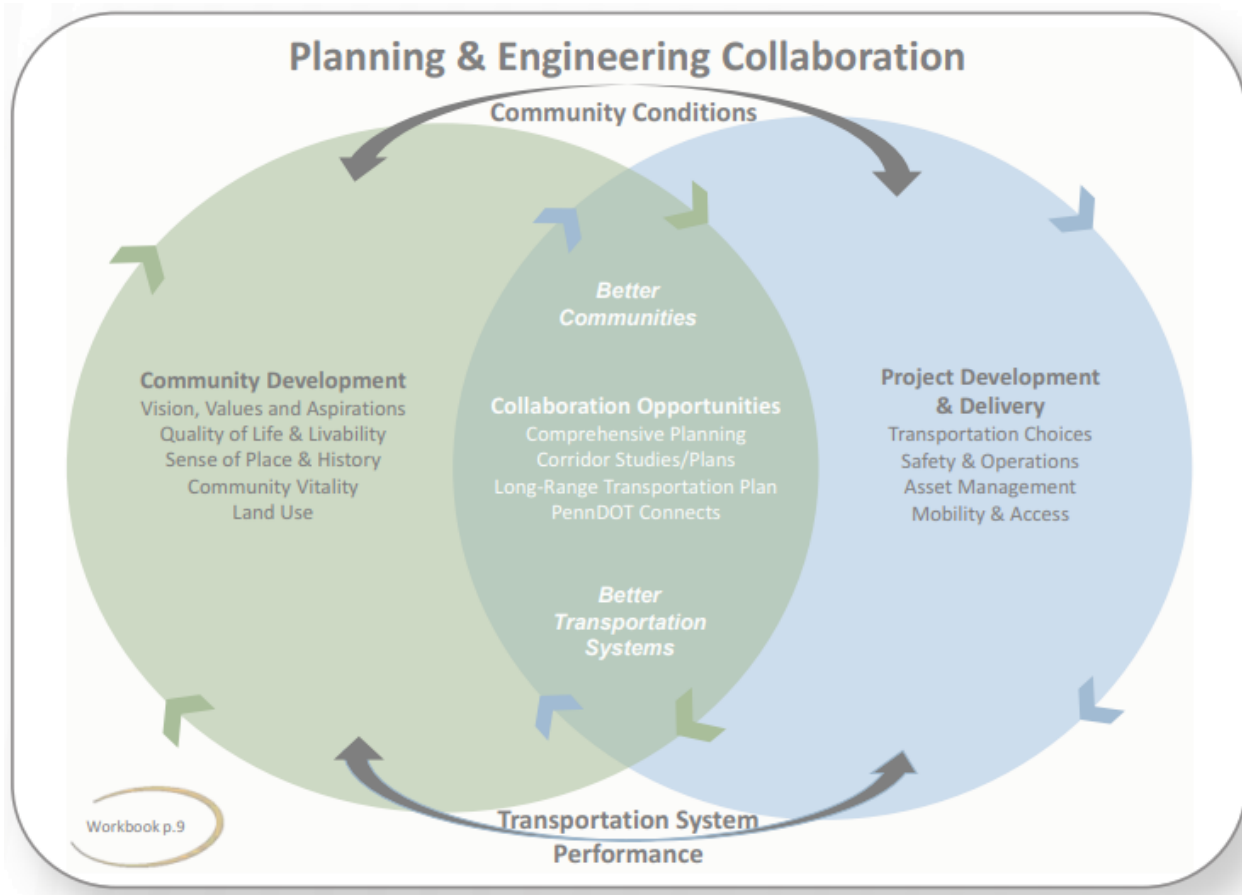
PART 1: CONNECTS ENGAGEMENT

Municipal Outreach Attendees



PART 2: HOT TOPICS

Part 2: Hot Topics



IT ALL BEGINS WITH PLANNING.



Goal: Better Communities and Mobility Powered through Collaboration

PennDOT Connects:

- Builds partnerships that invest in sustainable transportation.
- Leverages resources to improve communities.
- Leads and innovates for a more livable Pennsylvania.
- Delivers projects that improve economic competitiveness, access to work, and over all quality of life.

How PennDOT Connects Works

PennDOT and our planning partners meet with local governments to discuss details for each project prior to developing project scopes and cost estimates.

All mobility needs are considered.

- Bicycle
- Pedestrian
- Transit
- Freight
- Operations and ITS
- Utilities
- Community health
- Stormwater management
- Green infrastructure



PART 2: HOT TOPICS

Part 2: Hot Topics



Patch
the holes
Not put up signs
Rough Roads

The image shows a yellow diamond-shaped road sign, likely a 'Rough Roads' warning sign, with a handwritten note attached to it. The note is written on a piece of paper and reads: 'Patch the holes', 'Not put up signs', and 'Rough Roads'. The background of the image is a snowy road with visible potholes and cracks in the pavement.



PART 2: HOT TOPICS

The first hot topic is:



PART 2: HOT TOPICS

Topics from Audience (in ranked order):

1. Walkability (bikes, peds, safety)
2. Maintenance
3. Grants
4. Stormwater
5. Traffic/thru traffic
6. Trucks
7. Transit
8. Complete Streets/Design Context
9. Data/GIS



PART 2: HOT TOPICS

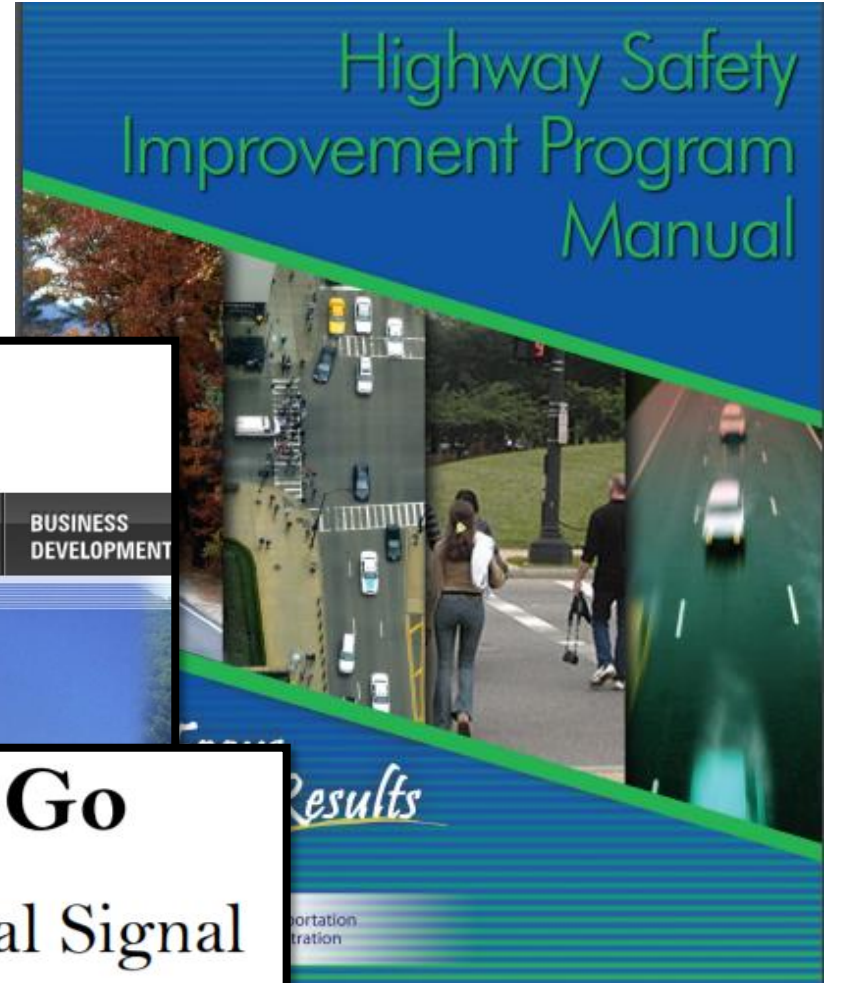
#1: Grants/Funding

**AUTOMATED RED LIGHT ENFORCEMENT (ARLE)
SUMMIT GUIDANCE DOCUMENT**



Green Light – Go
Pennsylvania's Municipal Signal
Partnership Grant Program

**Highway Safety
Improvement Program
Manual**



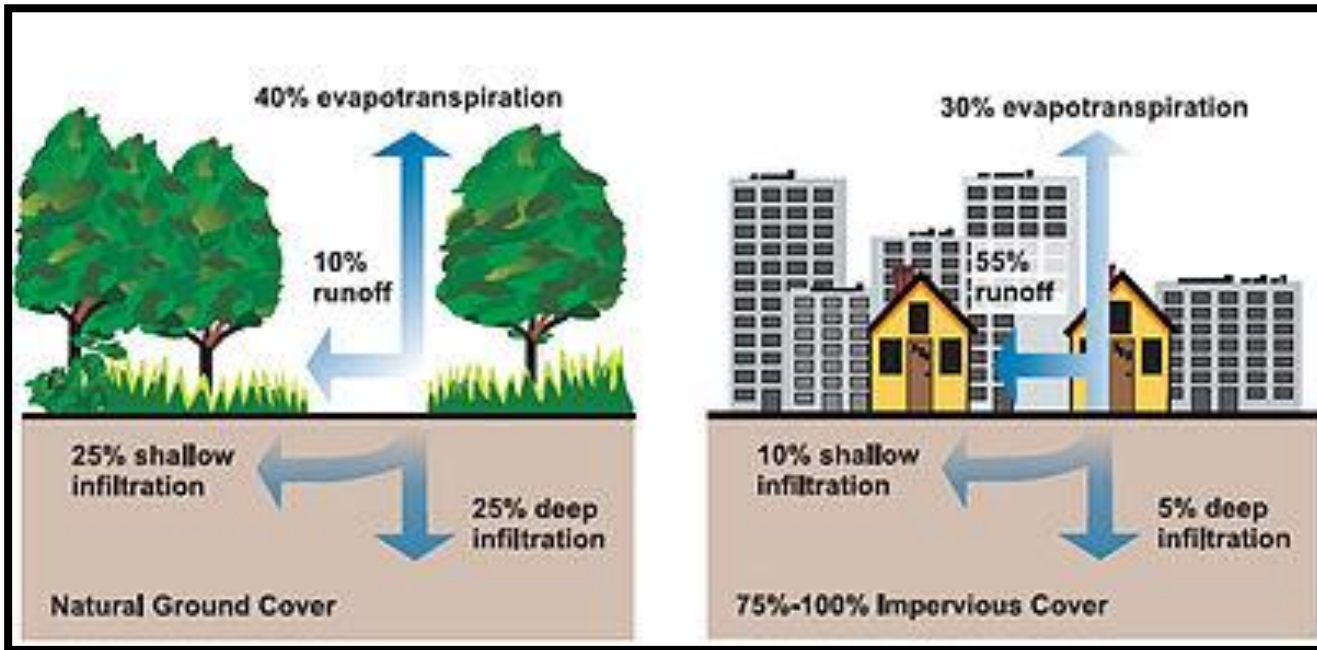
PART 2: HOT TOPICS

#2: Partnering with PennDOT



PART 2: HOT TOPICS

#3: Stormwater Management



PART 2: HOT TOPICS

#4: Active Transportation



PART 2: HOT TOPICS

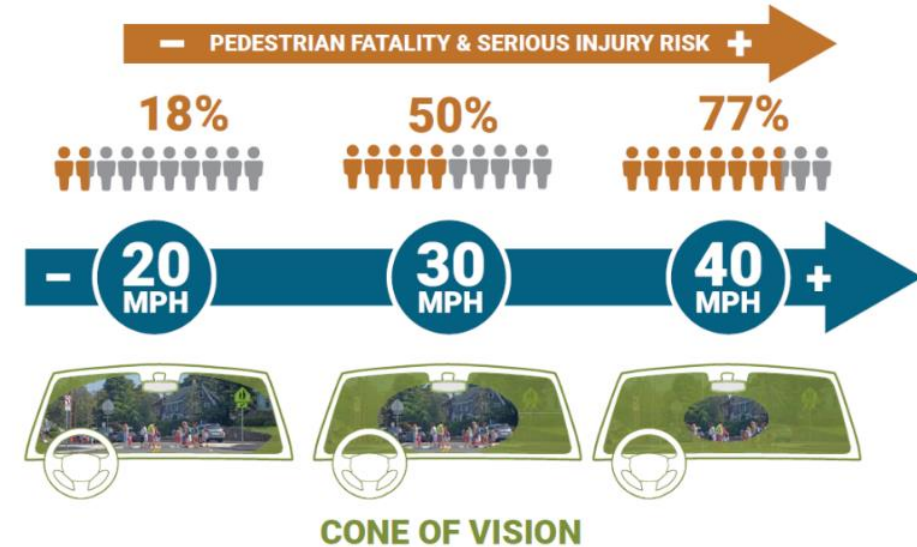
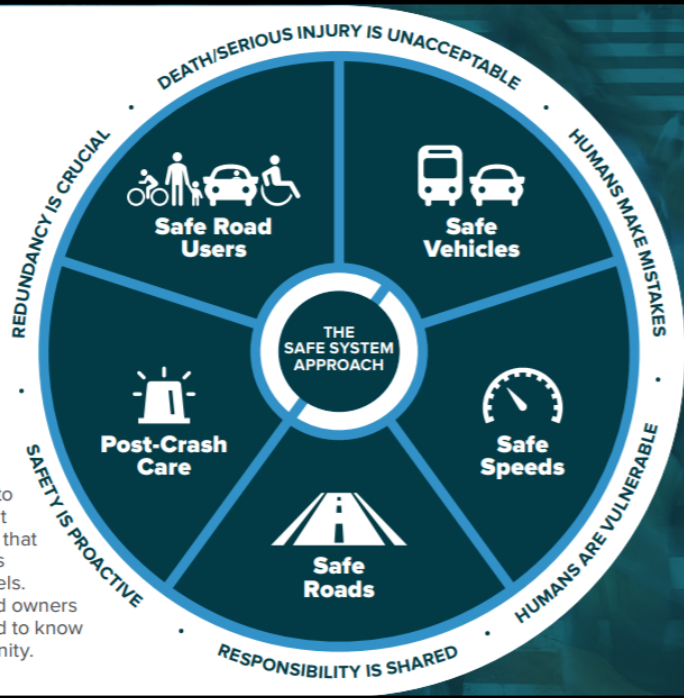
#5: Speeding/Safety

THE SAFE SYSTEM

APPROACH

Zero is our goal. A Safe System is how we will get there.

Imagine a world where nobody has to die from vehicle crashes. The Safe System approach aims to eliminate fatal & serious injuries for all road users. It does so through a holistic view of the road system that first anticipates human mistakes and second keeps impact energy on the human body at tolerable levels. Safety is an ethical imperative of the designers and owners of the transportation system. Here's what you need to know to bring the Safe System approach to your community.

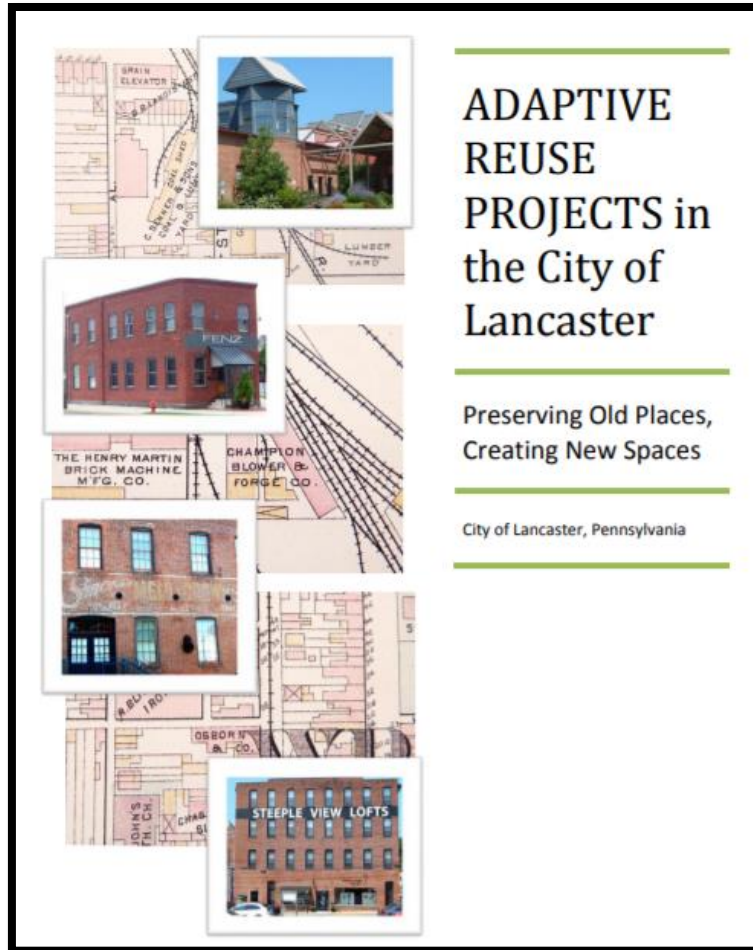


As motor vehicle speeds increase, the risk of serious injury or fatality for a pedestrian also increases (AARP Impact Speed and a Pedestrian's Risk of Severe Injury or Death 2011, p. 1). Also, motorist visual field and peripheral vision is reduced at higher speeds.



PART 2: HOT TOPICS

#6: Growth and Redevelopment



PART 2: HOT TOPICS

Other Topics Mentioned:

1. **Truck traffic**
2. **Access Management**
3. **Complete Streets**
4. **Liquid fuels applications**
5. **GIS**
6. **Electric vehicles**
7. **Growth and impact on infrastructure**
8. **More interaction with PennDOT staff**
9. **Bridge/culvert replacement process**
10. **Vegetation management**
11. **American with Disabilities Act (ADA)**
12. **Zoning to control traffic growth**
13. **Good public outreach practices**
14. **Visioning**



THANK YOU!

Patrick Wright

pwright@pennoni.com



PENNDOT CONNECTS

Webpages:

PennDOT Connects

<https://www.penndot.gov/ProjectAndPrograms/Planning/Pages/PennDOT-Connects.aspx>

Municipal Resources

<https://www.penndot.gov/ProjectAndPrograms/Planning/Pages/Land-Use-and-Transportation-Planning.aspx>

Phone: 717-710-2090

Email: PAConnects@pa.gov

