

























AMGUEDDFA CORWEN MUSEUM

WELSH  
TRAVIS







# AMGUEDDFA CORWEN MUSEUM





Toileday Mini-Residency  
Norman Jones, Peter, Corwen  
Business Association, Royal  
Oak, Harp, The Eagles



Amgueddfa Corwen,  
Malcolm Clements, Paul at  
PaperClip, Corwen  
Archeology group

Toileday Residency  
Tourism Leisure Culture,  
Corwen Business Association,  
Huw Jones, Mike Murray

Orchard,  
Ian West, Norman Jones,  
Huw Jones, McPhillips,  
Corwen Business Association

DCS, AONB, Ros Stockdale

Entry Archway

Sculptural Stiles

North Path

Climate Change Wall

Mown Path & Existing Grass

Black Poplars &  
Tree Diversity Grove,  
Mike Hughes



Plant Inventory,  
Ysgol Caer Drewyn, Lizzie  
Webster

Platform Signage,  
Cadwyn Clwyd, Ros Stock-  
dale, Norman Jones, Corwen  
Partnership, Ceri Hughes

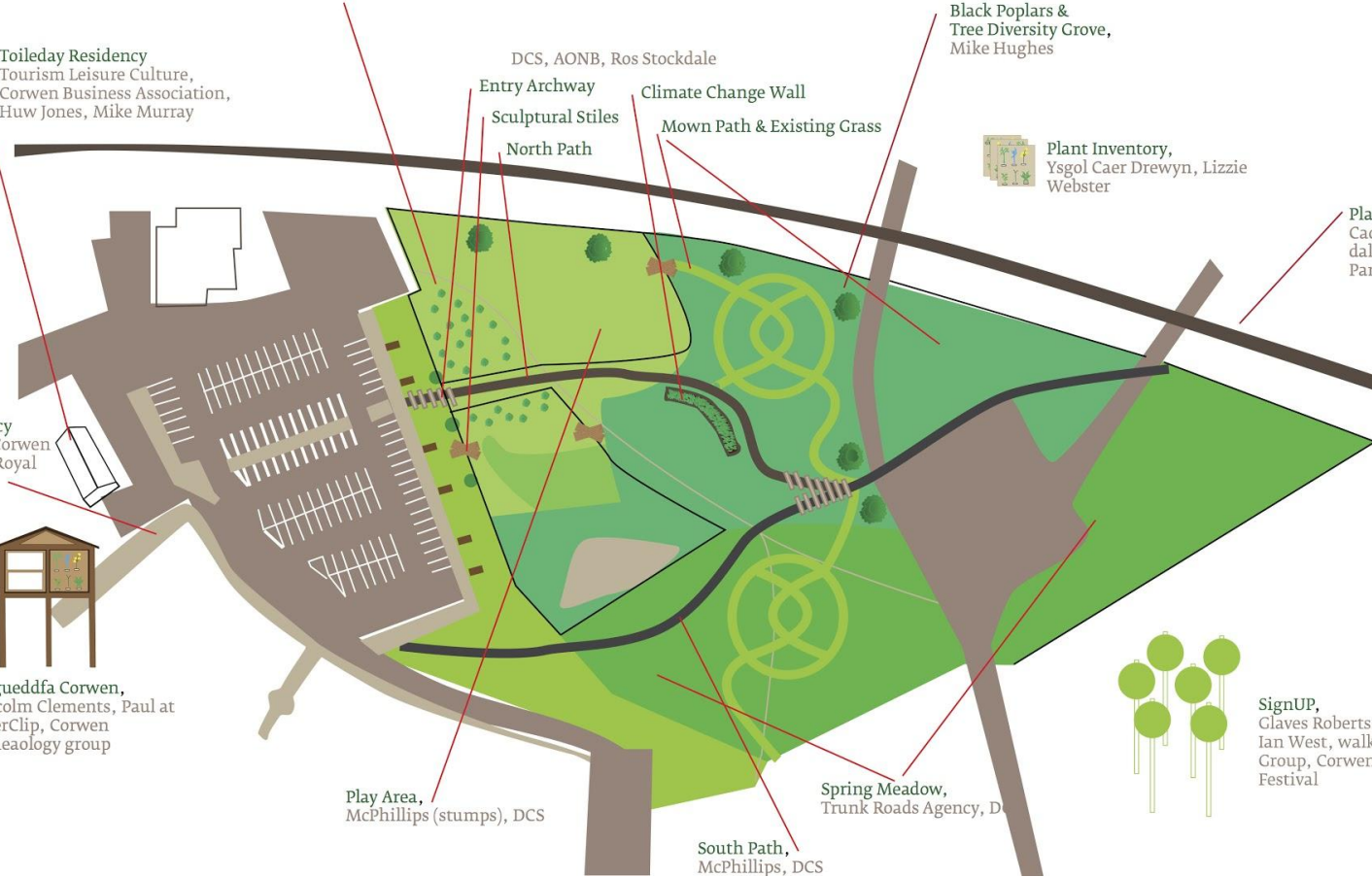
Play Area,  
McPhillips (stumps), DCS

Spring Meadow,  
Trunk Roads Agency, DCS

South Path,  
McPhillips, DCS



SignUP,  
Claves Roberts, Steve Layt,  
Ian West, walkers, Youth  
Group, Corwen Walking  
Festival





CAE'R ORSAF 55



DOL CORWENNA 89















Listening School

Auto Repair  
CORPORATION & MECHANICAL ETC.  
PHONE: (207) 355-8834  
FAX: (207) 355-8834

W. B. M. 215-7  
ACCESSIBLE  
Castrol C

W. B. M. 215-7  
ACCESSIBLE  
Castrol C

W. B. M. 215-7  
ACCESSIBLE  
Castrol C

W. B. M. 215-7  
ACCESSIBLE  
Castrol C

W. B. M. 215-7  
ACCESSIBLE  
Castrol C

W. B. M. 215-7  
ACCESSIBLE  
Castrol C

W. B. M. 215-7  
ACCESSIBLE  
Castrol C

W. B. M. 215-7  
ACCESSIBLE  
Castrol C

W. B. M. 215-7  
ACCESSIBLE  
Castrol C

W. B. M. 215-7  
ACCESSIBLE  
Castrol C

W. B. M. 215-7  
ACCESSIBLE  
Castrol C

W. B. M. 215-7  
ACCESSIBLE  
Castrol C

W. B. M. 215-7  
ACCESSIBLE  
Castrol C

W. B. M. 215-7  
ACCESSIBLE  
Castrol C

W. B. M. 215-7  
ACCESSIBLE  
Castrol C

W. B. M. 215-7  
ACCESSIBLE  
Castrol C

W. B. M. 215-7  
ACCESSIBLE  
Castrol C

W. B. M. 215-7  
ACCESSIBLE  
Castrol C

W. B. M. 215-7  
ACCESSIBLE  
Castrol C

W. B. M. 215-7  
ACCESSIBLE  
Castrol C

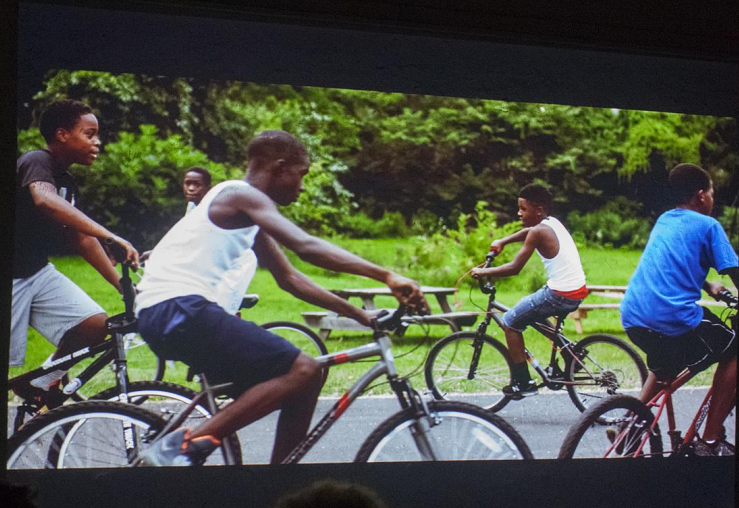
W. B. M. 215-7  
ACCESSIBLE  
Castrol C











EXIT



























Aislinn Pentecost - Far.  
aislinn.info

(919) 608-1110

aeptarren



# NORTH DELAWARE RIVERFRONT

## GREENWAY

### LEGEND

- COMPLETED TRAIL
- TRAIL UNDER CONSTRUCTION
- TRAIL IN DESIGN
- TRAIL PLANNED

- |  |  |
|--|--|
|  |  |
|  |  |
|  |  |
|  |  |
|  |  |



BUCKS COUNTY

CENTER CITY

**GLEN FOERD**  
ON THE DELAWARE  
(HISTORIC MANSION  
AND MUSEUM)

**PLEASANT HILL PARK**  
(ACCESS: LINDEN)

**TACONY**  
**BOAT LAUNCH**  
(ACCESS: PRINCETON)

**PENNYPACK**  
ON THE DELAWARE  
(ACCESS: PENNYPACK PATH)

**FRANKFORD**  
**BOAT LAUNCH**  
(ACCESS: 5200 TACONY ST.)

**LARDNER'S POINT PARK**  
(ACCESS: LEVICK)

**PULASKI PARK**  
(ACCESS: ALLEGHENY)

**RIVERFRONT PARK**  
(\*PROPOSED)  
(ACCESS - ORTHODOX)





