

Heritage Preservation Planning in York County





Lesson #1: Work with what you've got.

How do we plan for preservation without an up-to-date historic resources inventory or technical staff?

How do we responsibly advise the County when preservation-related requests are made?

Save Mifflin House

Help support efforts to save York County's Mifflin House and its Underground Railroad history.

[Click to Give!](#)

Update 7/2018

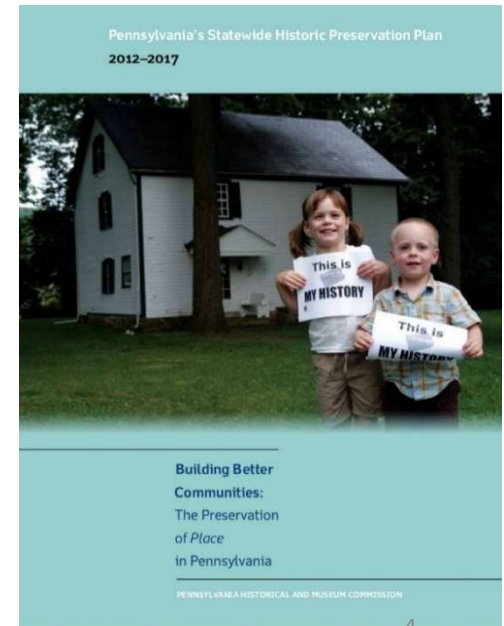
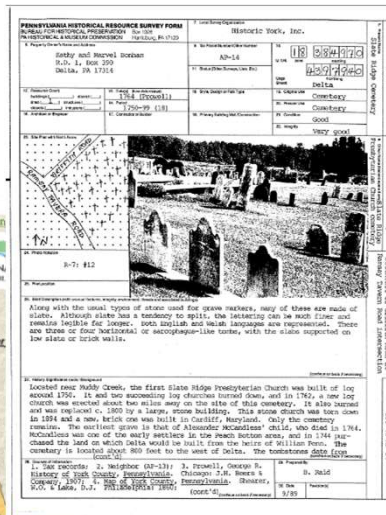
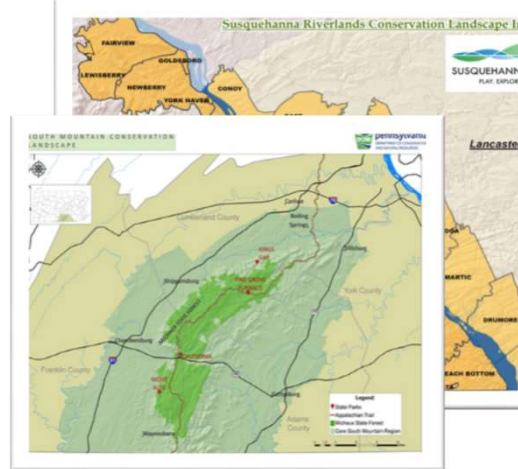
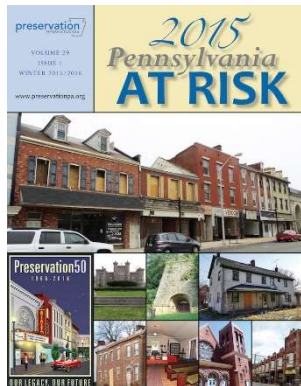
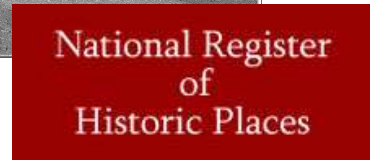
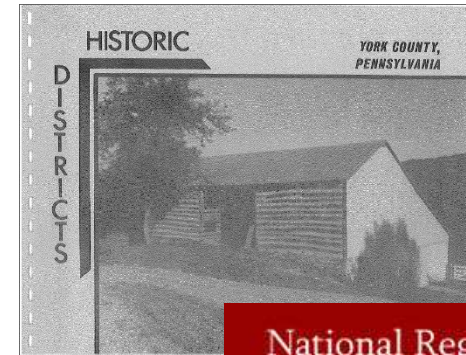
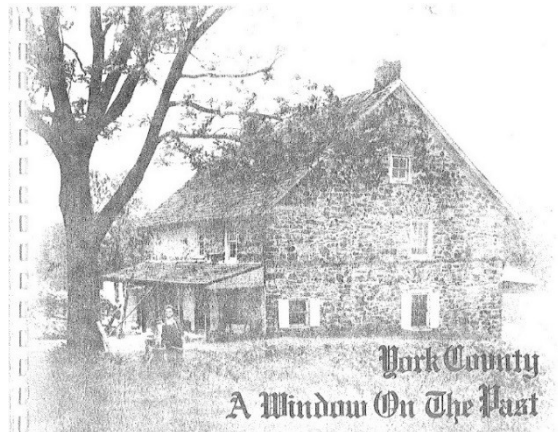
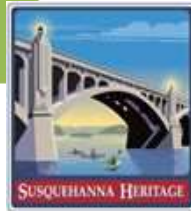
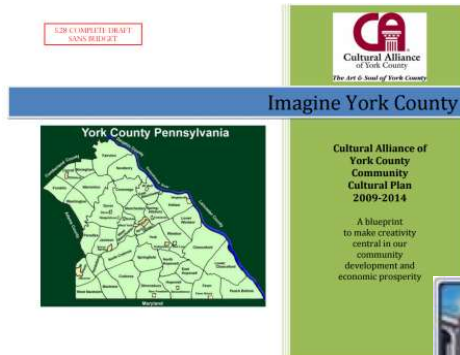
We're pleased to report good news for Underground Railroad history in Pennsylvania! The York County Common Pleas Court, in a ruling handed down Thursday, July 18, agreed with the arguments of Hellam Township and statewide education and advocacy organization, Preservation Pennsylvania, and Hellam Township-based Kreutz Creek Valley Preservation Society. These parties maintained that it is necessary and proper that the Zoning Officer denied a demolition permit for the Mifflin House because the historic farmstead should be retained and preserved in any plans going forward based on a specific note placed on the business park site plan, recorded in 1998, that states: "Existing Farm Complex to Remain." Judge Flannelly agreed with the Hellam Township Zoning Hearing Board's determination that the note constituted a condition on the overall approval of the business park that was binding on Kinsley and could not be ignored. [Click here to read more.](#) Follow the [Save Mifflin House Facebook page](#) for regular updates!



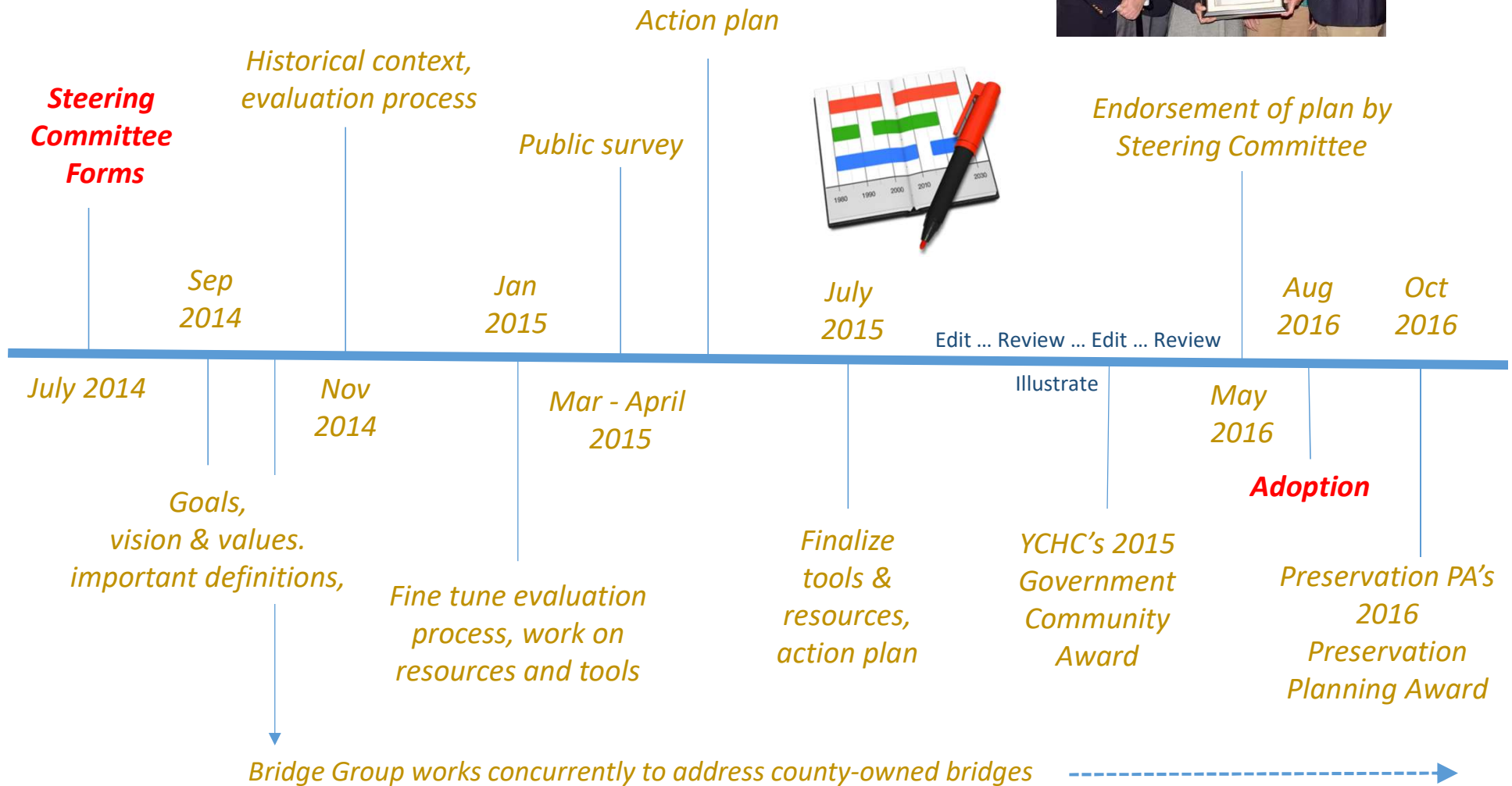
Update 3/2018: A new subdivision plan was filed in early March with Hellam Township and York County Planning Commission. It calls for the demolition of all historic buildings on the site, immediately south of US Route 30, just off the Cool Springs Road exit in Hellam Township. The plan calls for interior road changes and utility and storm water management installations to allow for the expansion of the existing warehouse facilities that are currently adjacent to the historic farmhouse and its surrounding acreage. [Follow "Help Save Mifflin House" on Facebook](#) for updates!

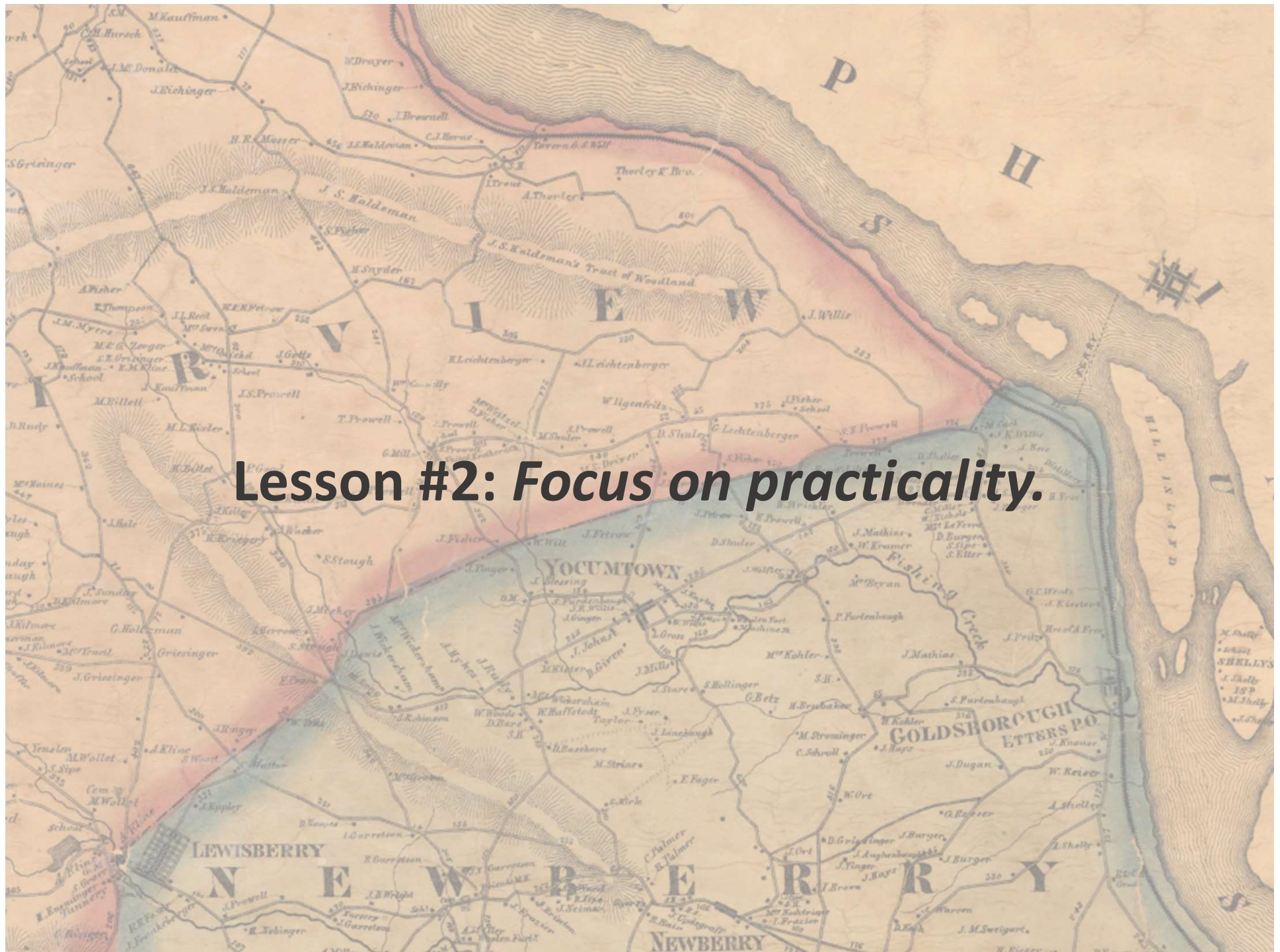


What other work has been done in the community, and how can we use it?



The planning process





Historical Eras

- Native American & Early Trade Era (pre-1733)
- Early European Settlement Era (1722-1763)
- Community Building Era (1763-1800)
- Transportation and Commerce Era (1790-1860)
- Mechanization and Specialization Era (1850- 1915)
- Mobility Era (1895-1950)
- Suburbanization and Decentralization Era (1945 – 2000)
- Crisis, Restructuring, & Rebirth (1990 – Present)

How the County has changed, grown, and stayed the same across time.

Primary Themes Developed through Heritage Planning Process



Quest for Freedom (Freedom)

Religious Freedom; the American Revolution; the Underground Railroad and Resistance; the Civil War; Immigration and Westward Expansion; and Independence and Autonomy (contemporary values in action).

Foodways: From Farm to Table (Bounty)

Land, Climate and Fertility; Family Farms; Transformations in Agriculture Markets; Food Processessing and Distribution; Food Preparation and Consumption; and Land Stewardship.



Invention, Innovation, Tradition (Ingenuity)

Inventiveness and Reinvention; Entrepreneurial Spirit; Manufacturing, Commerce and Transportation; Plain Peoples; Innovation in Arts and Humanities; Traditions in Crafts and Folk Arts; A Penchant for Preservation; and Heritage, Values, Culture, and Custom.

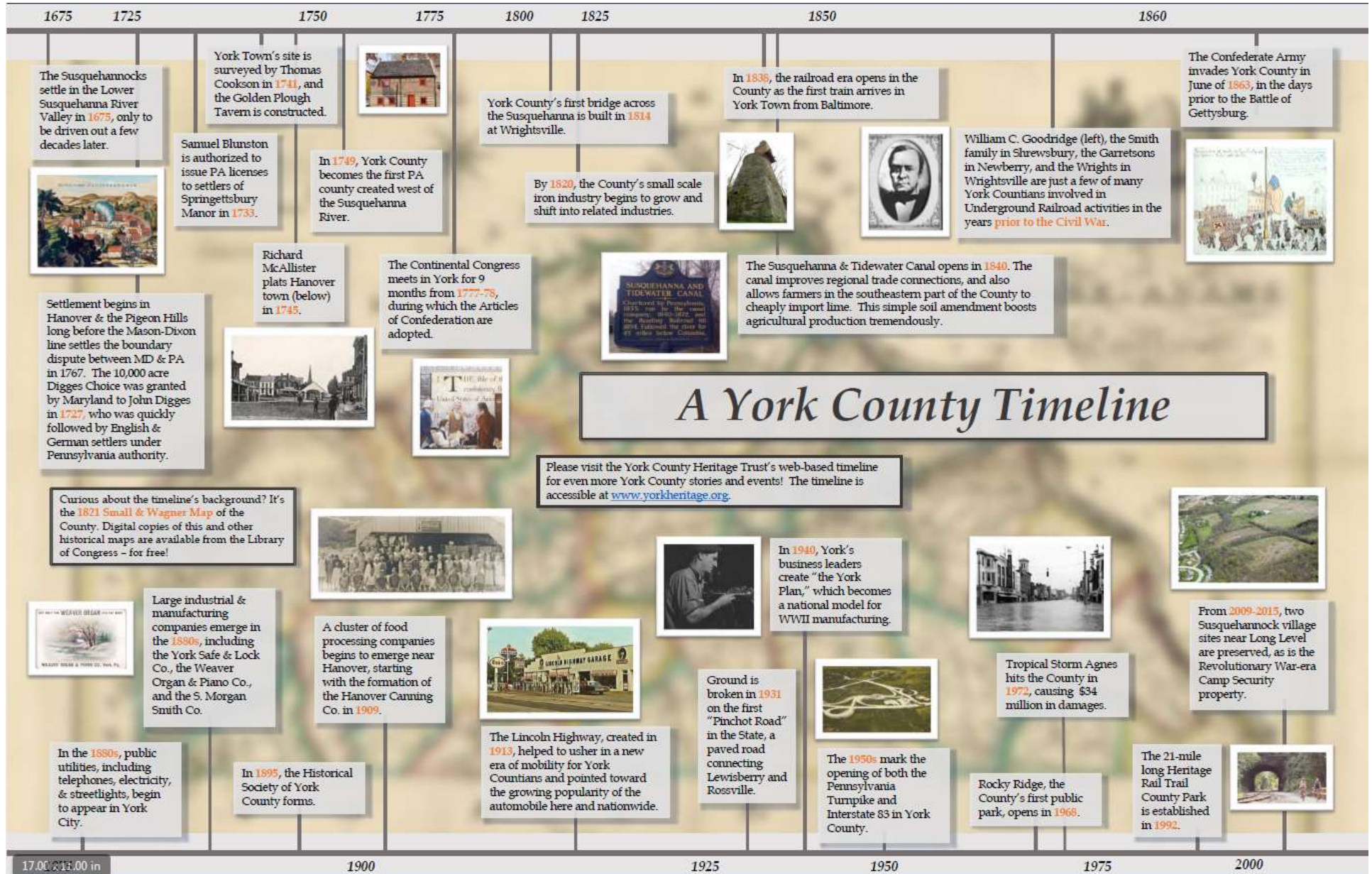
Town & Country: Forging Communities, Cultivating the Land (Towns and Countryside)

Community Life; Public Celebrations and Cultural Expressions; Diversity and Homogeneity; Cooperation and Conflict; Intentional Communities and Voluntary Organizations; a Liveable Scale; and the Preservation Movement (neighborhoods, countryside, and culture).



Natural Ways: the Susquehanna River and Beyond

The River, its Tributaries, and the Bay; Geology, Geography, Soil and Climate; Indigenous Peoples; Biological Diversity; Nature and Economics; Recreation; and Environmental Stewardship.



The key is to identify and support, when possible, quality projects that meet the goals put forth in this Plan.

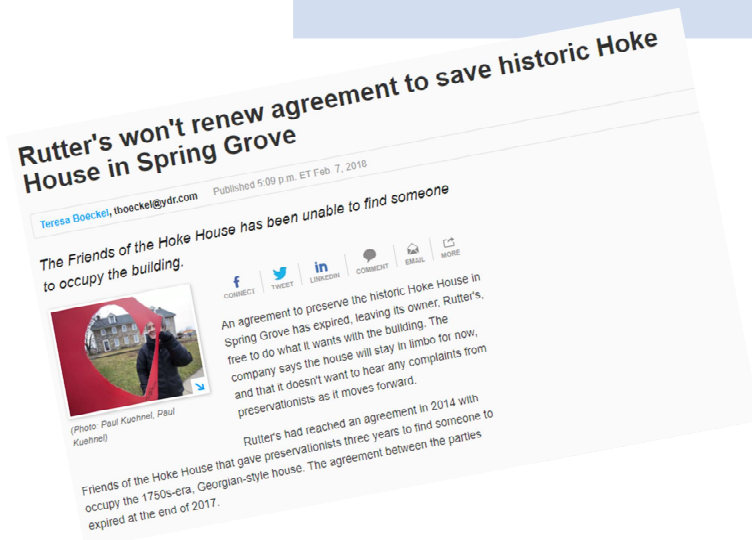
The Evaluation Process

A request is made to County Commissioners

Evaluation form is completed

Form is reviewed and scored by YCPC staff and other professionals

Recommendation is made to Commissioners based on score



Process is intended to be helpful, whether or not project scores well or receives funding.

York County Heritage Resource Evaluation Sheet

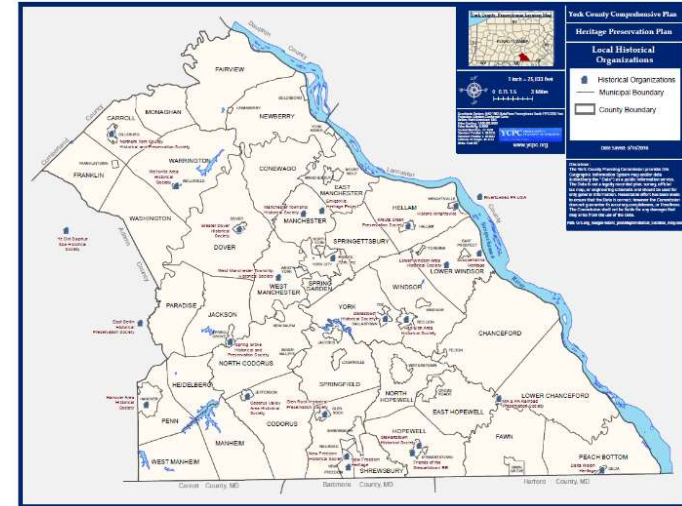
Points Assessment

Historical Significance		
<i>Maximum of 10 points per item</i>	Points	Comments
Significance		
County Heritage		
Planning Principles		
<i>Maximum of 5 points per item</i>	Points	Comments
Local Significance		
Local Planning Efforts		
County Comprehensive Plan		
Quality of Life Considerations		
<i>Maximum of 5 points per item</i>	Points	Comments
Public Interaction		
Cultural Life		
Local Interest		
Environmental Sustainability		
Sense of Place		
Economic Considerations		
<i>Maximum of 5 points per item</i>	Points	Comments
Direct Benefits		
Indirect Benefits		
Appropriateness		
Positive Reinforcement		
Project Feasibility		
<i>Maximum of 5 points per item</i>	Points	Comments
Condition		
Financial Planning		
Long Term Success		
Improvements		
Total Points:		

- Weighted categories
- Standardized recommendations
- Useful to interviewees
- Useful to others

Preservation Tools & Resources

- History of Historic Preservation
- Preservation in PA Municipalities
 - *Includes municipal tool inventory*
- Organizations at Work in York County
- Sources of Funding
- Online Resources
- Offline Resources



Selected Preservation Tools in Use in York County

Historic Districts through Zoning

HARB Districts

Delta, Shrewsbury, & Wrightsville Boros, and Paradise & Hellam Twps

York City

Historic Resources on Official Maps

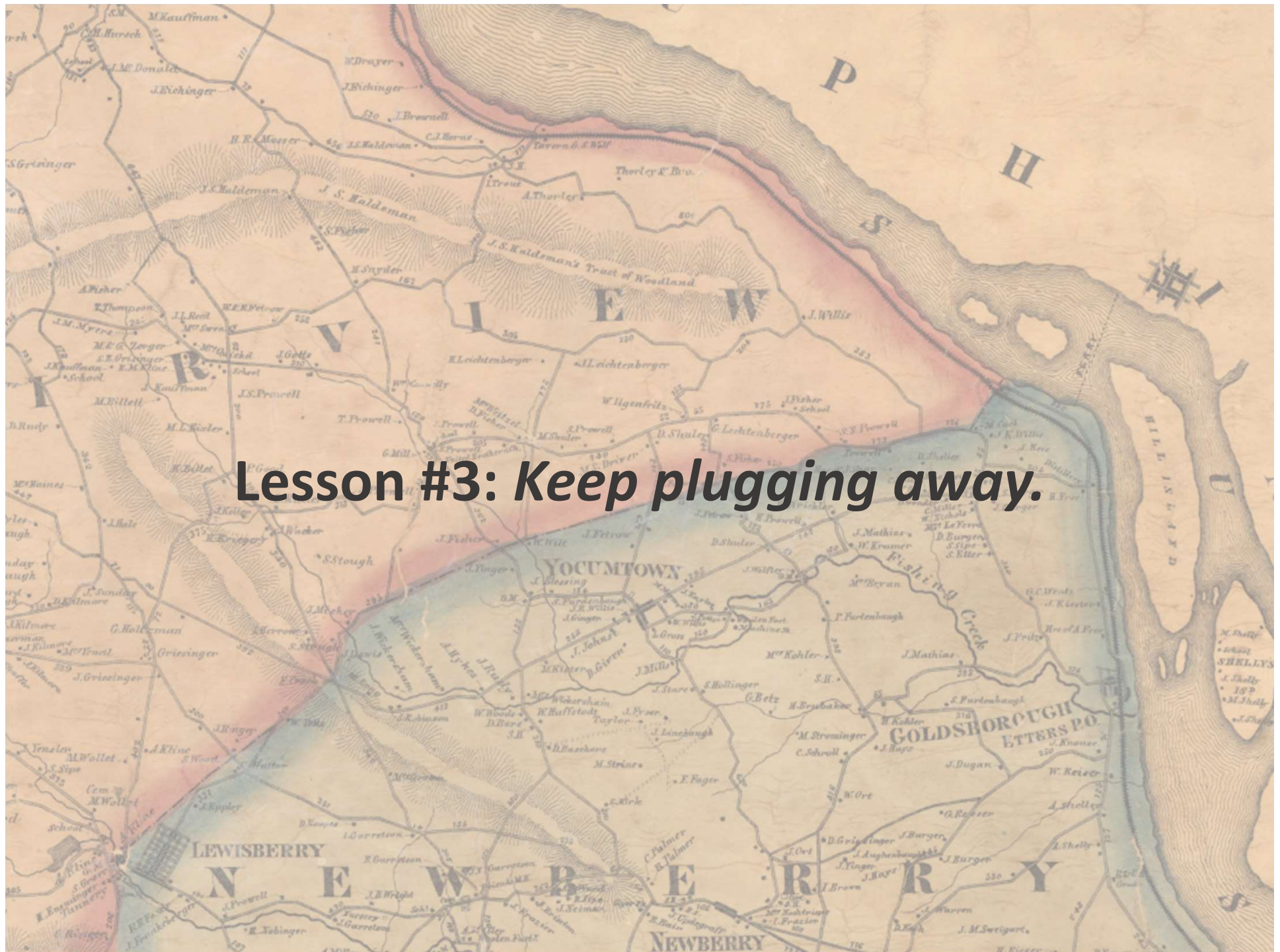
Hellam, Lower Windsor, & Shrewsbury Twps

Protections in Subdivision & Land Development Ordinances

Jefferson Boro, and Chanceford, Lower Windsor, & West Manheim Twps

Other Zoning Tools (demo permits, etc)

Delta, Hallam, Jacobus, Jefferson, Lewisberry, Wrightsville, & Yoe Boros, York City, and Heidelberg, Hellam, Lower Windsor, North Codorus, & West Manheim Twps



Lesson #3: Keep plugging away.

Five strategies developed to achieve Plan goals.



Each strategy has specific action items.

Coordinating Implementation

ADVISORY
COMMITTEE



STEERING
COMMITTEE

*Conservation Society of York
County*

Downtown Inc.

Hanover Area Historical Society

Historic York, Inc.

Historic Wrightsville

*Kreutz Creek Vally Preservation
Society*

*Manchester Township Historical
Society*

*PA Historical & Museum
Commission*

Springettsbury Township

Susquehanna Heritage

*York County Convention &
Visitors Bureau*

York County History Center

*York County Planning
Commission*

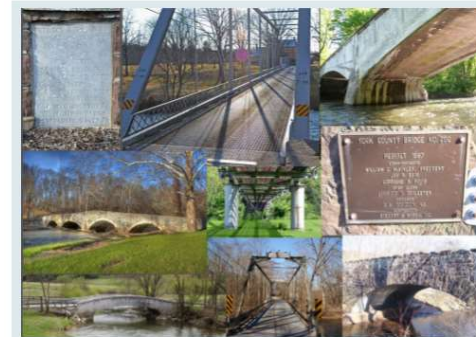
William C. Goodridge House

Task	Committee Members	Timeline
<p>School Outreach – contact York College and Millersville programs, later expand to all area colleges. Two goals: (1) identify internship opportunities and (2) connect local historians with speaking opportunities in college history classes. Long term need to make similar connections in primary and secondary schools, provide lesson plans for more heritage resources similar to ones available for Camp Security.</p> <p>ID available speakers, distribute list. Work with York College GIS classes to further countywide web mapping application in fall of 2018.</p>	<p>Walter Kuhl, Anne Walko, Amy Evans <small>(June Lloyd can possibly provide 4th & 5th grade teacher contacts)</small></p>	<p>March 2018 for speaker list, April 2018 for distribution, Fall of 2018 for mapping internships</p>
<p>Countywide Web Mapping Application – support endeavor by connecting resources and providing data. Supporting grant applications if necessary.</p>	<p>Committee-wide</p>	<p>End of 2018 (?)</p>
<p>Municipal Preservation Support produce model ordinance language and other technical support services to promote preservation to local municipalities. ID local best practices already in place.</p>	<p>Jessica Fieldhouse, PHMC Staff, YCPC Staff</p>	<p>Models available end of 2018</p>
<p>Targeted National Register Outreach – Identify and prioritize heritage resources that are not currently listed on the National Register, but which are likely eligible. Conduct outreach to property owners and aid with nomination process. Look at available literature and determine whether a fact sheet on the NR or other materials with a local focus are needed to help property owners understand the process.</p>	<p>Joe Jefcoat, Jim Williams, Becky Roman</p>	<p>Ongoing</p>
<p>County Register of Historic Resources – Investigate the feasibility and local interest in creation of a County Register. Propose a structure and administrative home. Goal is to provide “no commitment” recognition to heritage resources that may not be eligible for the National Register for technical reasons.</p>	<p>Amy Evans, Matt Gallagher, Joan Mummert</p>	<p>Determine feasibility within 6 months</p>
<p>Coordinated Communications & Media Outreach – promote Cultural Alliance calendar, link to it from YCPC Heritage web page. Develop a common hashtag and other social media connections, involve interested local media and social media groups. Find funding to support outreach efforts. Make connections with library system as an outlet for programming and materials. Collect and share video resources available online.</p>	<p>Anne Walko, Amy Evans, June Lloyd, Joe Jefcoat</p>	<p>Conduct social media activity summer/fall of 2017</p>
<p>Comprehensive Survey – investigate potential funding sources for a new comprehensive historic resources inventory. Look at opportunities for cross-county cooperation between Heritage Areas, and also possibility of doing strategic surveys or identification of heritage conservation areas.</p>	<p>Jonathan Pinkerton, Dave Maher</p>	<p>Ongoing</p>

How Implementation is Working

Progress & What's Next

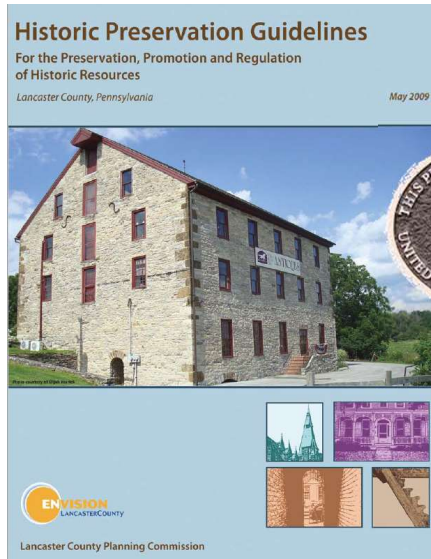
- Guidance on Historic Bridges
- Local Recognition & County Register
- Targeted National Register Outreach
- Municipal Support
- **Expansion of Web Mapping Project**
<http://register.mantwphistory.com/map.html>



York County

Bridge Prioritization Report

County-Owned Bridges Constructed Prior to 1945



Ongoing Challenges

- Limited resources across partners
- Staff time & continuity
- Fragmentation
- Difficulty engaging
- Progress is slow

York County Heritage Preservation Plan



An element of the York County Comprehensive Plan

*This scene above looks southward from the intersection of North George Street and Philadelphia Street in downtown York, PA. The image blends a photo taken in the winter of 2015 with one of the Strand-Capitol Theater in warmer weather, dating from c. 1942. The theater's marquee advertises a film released in May of that year, called *My Favorite Spy*. The movie stars Kay Kyser, Ellen Drew, & Jane Wyman.*



1940s-era image courtesy of Old York, Pa. Photographs & Current Images Facebook page.
2015 image courtesy of YCPC.

www.bit.ly/YorkPresPlan