

TRANSFORMING TRANSPORTATION: PLANNING FOR A POST-COVID WORLD

PENNSYLVANIA'S LONG-RANGE TRANSPORTATION PLAN AND FREIGHT MOVEMENT PLAN

APA-PA CONFERENCE •• OCTOBER 19, 2021

TODAY'S PRESENTERS

Michael D. Rimer, AICP

Transportation Planning Specialist Supervisor
PennDOT Center for Program Development and Management

Brian Funkhouser, AICP

Project Manager
Michael Baker International

Dan Szekeres

Technical Manager
Michael Baker International



TODAY'S DISCUSSION

2045 Long Range Transportation Plan

2045 Freight Movement Plan

Plan Implementation

Transportation Planning Data Repository

Upcoming Project Schedule



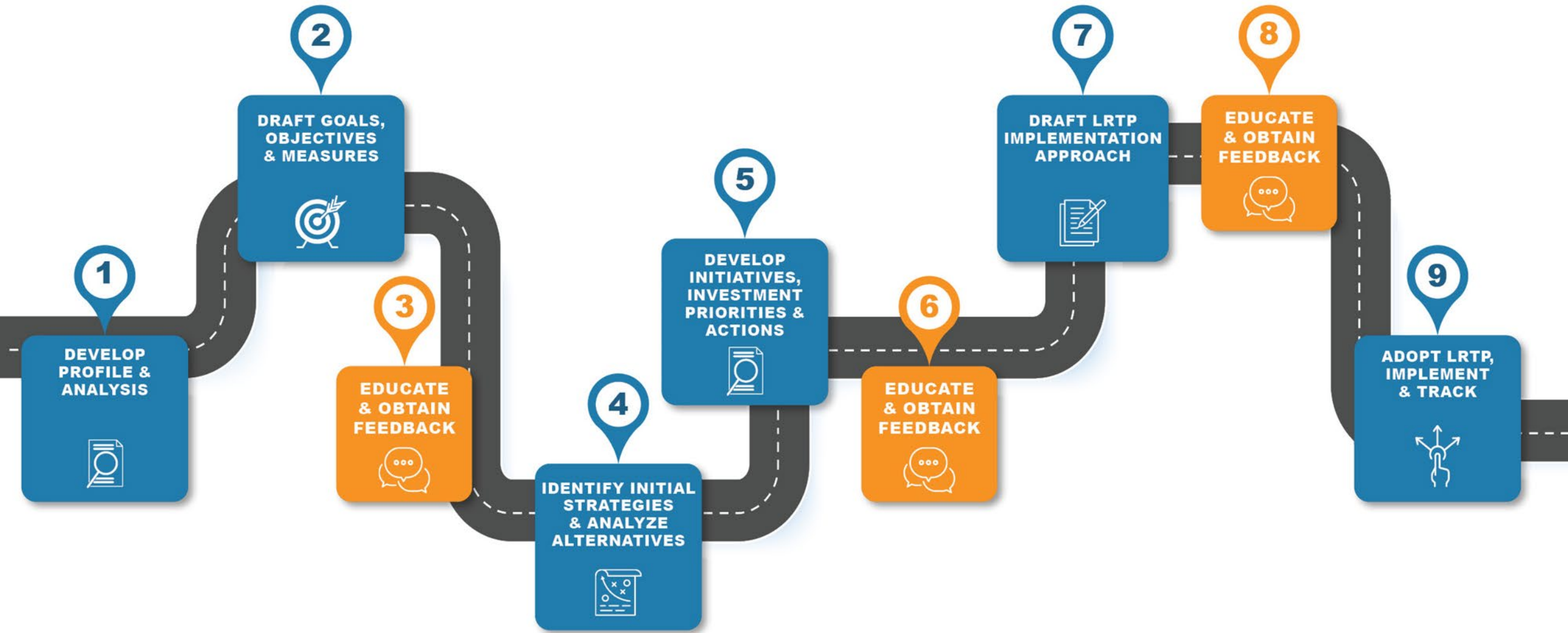
PENNSYLVANIA'S 2045 LONG RANGE TRANSPORTATION PLAN

ABOUT THE 2045 LRTP

- Multimodal policy focus
- Updated every five or six years
- Broad federal requirement
 - Developed and approved by State DOTs
 - 20-year time horizon
 - Includes goals with strategic actions
- Performance-based planning
 - Measures and targets
 - Bi-annual Transportation Performance Report
 - Plan implementation measures



20-YEAR PLAN LONG RANGE TRANSPORTATION PLANNING PROCESS



PUBLIC AND STAKEHOLDER ENGAGEMENT

Leadership
Interviews

Briefings with
Deputy
Secretary for
Planning

Municipal
Association
Focus Groups

Governor's
Affinity Group
Workshops

State Planning
Board

STC Public
Survey and
Forum

PA Public
Transportation
Association
Focus Group

Department
In-Reach



LRTP GOALS

Safety

- Enhance safety and security throughout Pennsylvania's transportation system

Mobility

- Strengthen transportation mobility to meet the increasingly dynamic needs of Pennsylvania residents, businesses, and visitors.

Equity

- Improve transportation access and equity throughout the Commonwealth.

Resilience

- Promote Pennsylvania transportation's resilience to climate change and other risks and reduce transportation's environmental impacts.

Performance

- Improve the condition and performance of transportation assets.

Resources

- Structure transportation funding and finance approaches that allocate sufficient resources for system improvement, maintenance, and preservation.



PERFORMANCE MEASURES

System Performance

Pavement and Bridge Condition

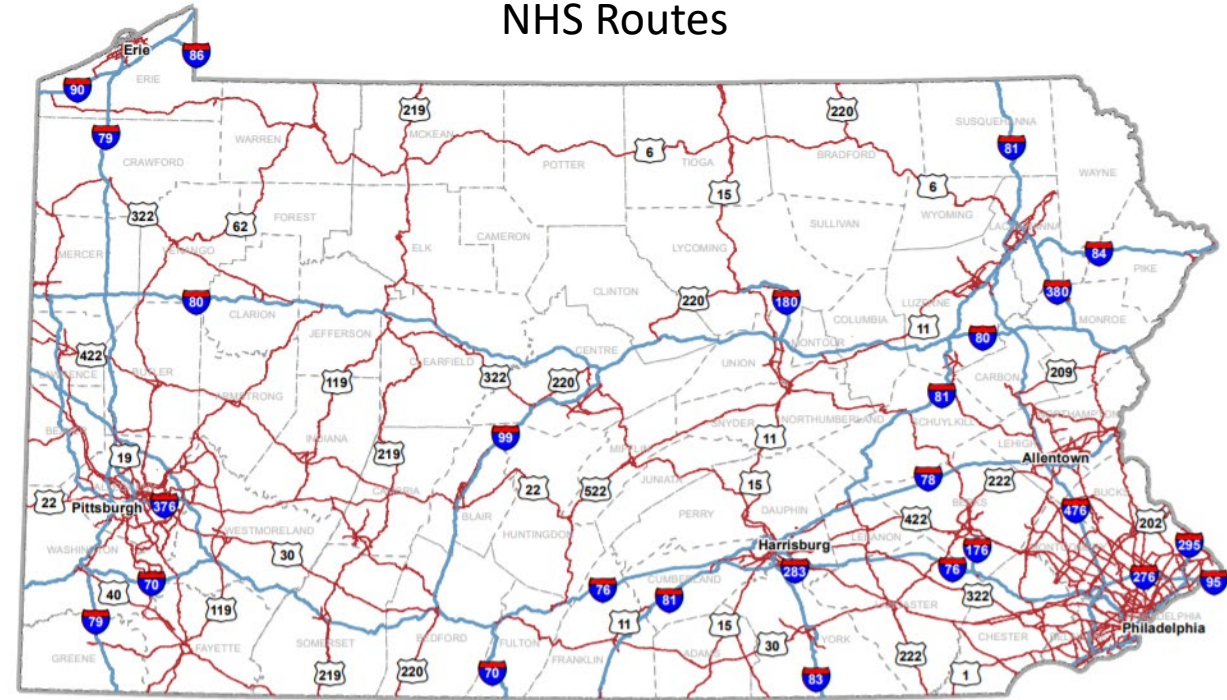
Rate of Fatalities and Serious Injuries

Congestion and Emission Reduction

Funding Targets (TROC, etc.)

Equity Measures

NHS Routes



PENNSYLVANIA'S 2045 FREIGHT MOVEMENT PLAN

ABOUT THE 2045 FMP

- Previous freight plan developed in 2016
- Addresses multimodal freight transportation elements
- Federally required and updated every five years. FAST Act
- Recommends policy and requires a fiscally constrained Freight Investment Plan





DRAFT STATEWIDE FREIGHT PLAN WITH FISCALLY CONSTRAINED INVESTMENT PLAN

EDUCATE & OBTAIN FEEDBACK

Share with Freight Plan Advisory Group for feedback.

IDENTIFY INITIAL STRATEGIES & ANALYZE ALTERNATIVES

DRAFT GOALS, OBJECTIVES & MEASURES

EDUCATE & OBTAIN FEEDBACK

*Gather feedback from stakeholders.
Consult Freight Plan Advisory Group*

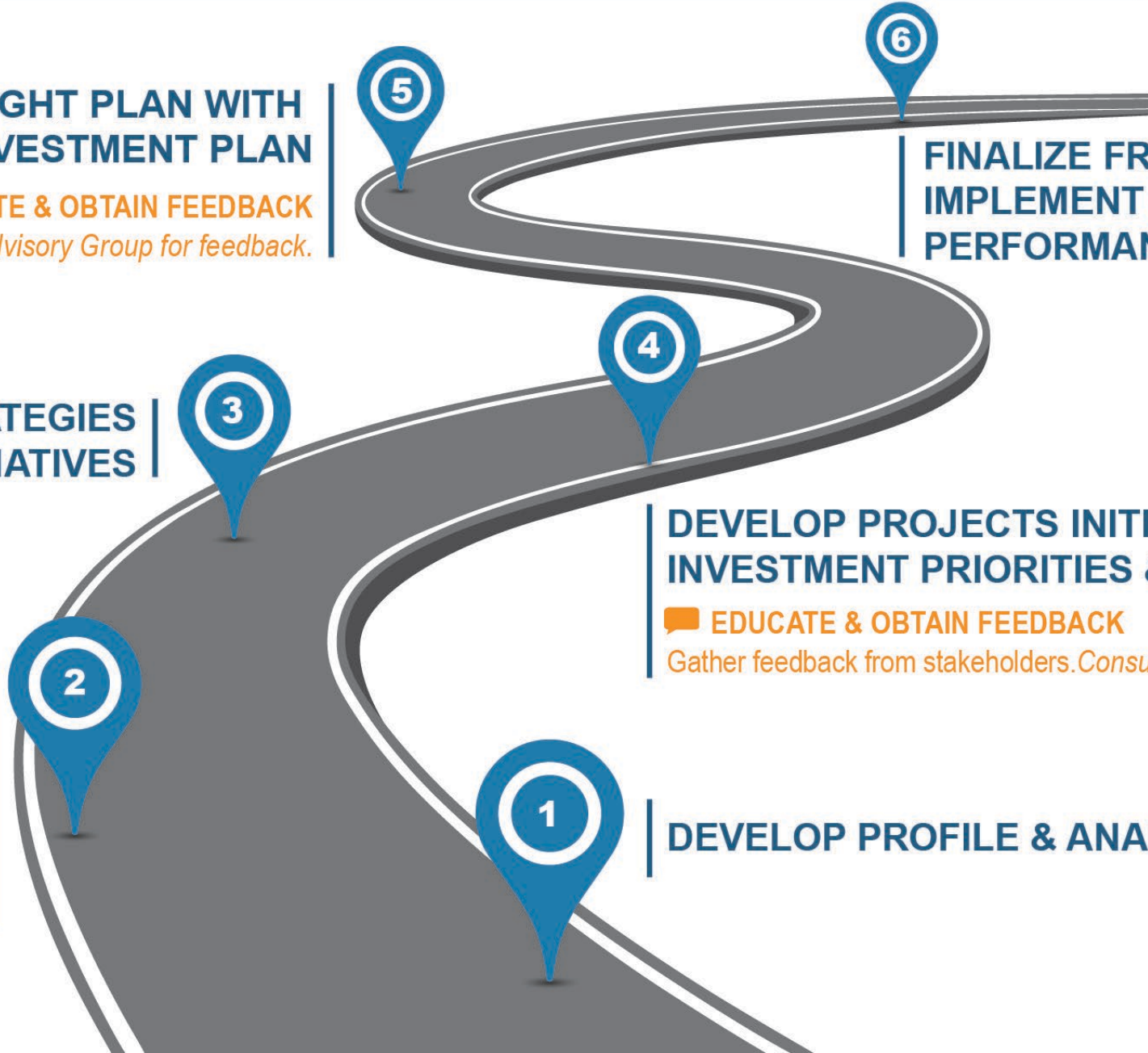
DEVELOP PROJECTS INITIATIVES, INVESTMENT PRIORITIES & ACTIONS

EDUCATE & OBTAIN FEEDBACK

Gather feedback from stakeholders. Consult Freight Plan Advisory Group

DEVELOP PROFILE & ANALYSIS

FINALIZE FREIGHT PLAN, IMPLEMENT & TRACK PERFORMANCE & PROGRESS



FREIGHT STAKEHOLDER ENGAGEMENT

Statewide
Virtual Freight
Forum

Freight Focus
Groups

Freight Plan
Advisory Group

Regional
Freight
Committees

Motor Carrier
Safety Advisory
Committee



FMP GOALS

01

Align Freight Mobility
with Economic Development
and Land Use

02

Advance Project
Investments that
Enhance Freight Mobility

03

Provide Planning, Data,
and Analytical Tools for
Improved Decision Making

04

Improve Multimodal
Freight Transportation
Operations and Safety



FREIGHT PERFORMANCE MEASURES

Reduction of Truck Bottlenecks

Truck Travel Time Reliability

Freight-Oriented Development Standards

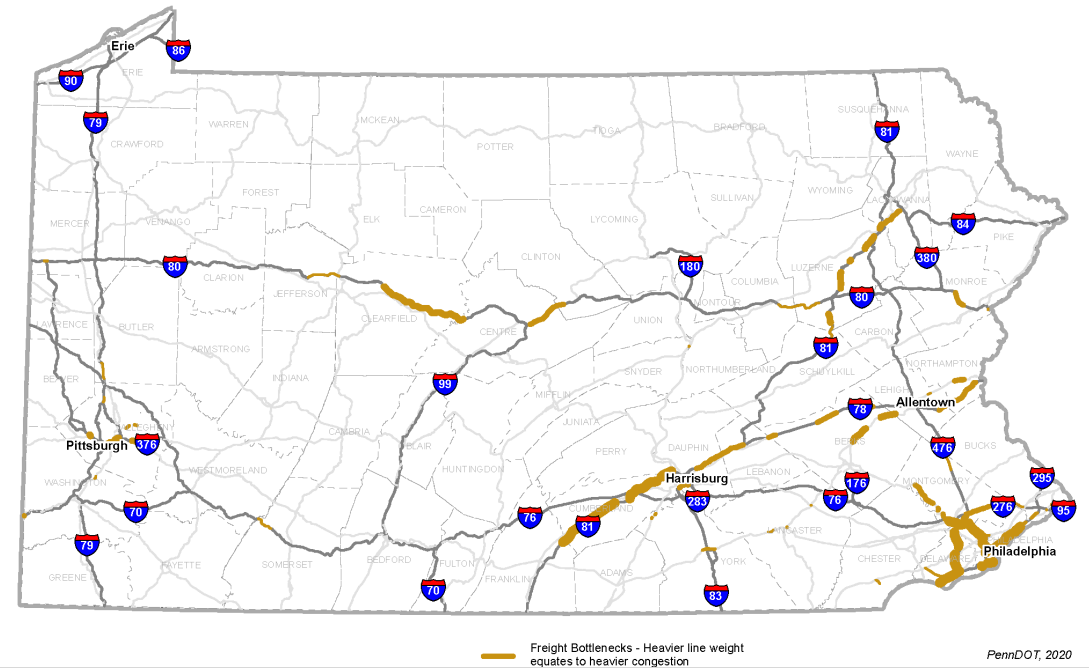
Rate of Truck-Related Crashes

Truck Parking Capacity in Areas of Need

Private Sector Engagement

Preservation of Intermodal Facilities

Freight Bottlenecks



PLAN IMPLEMENTATION

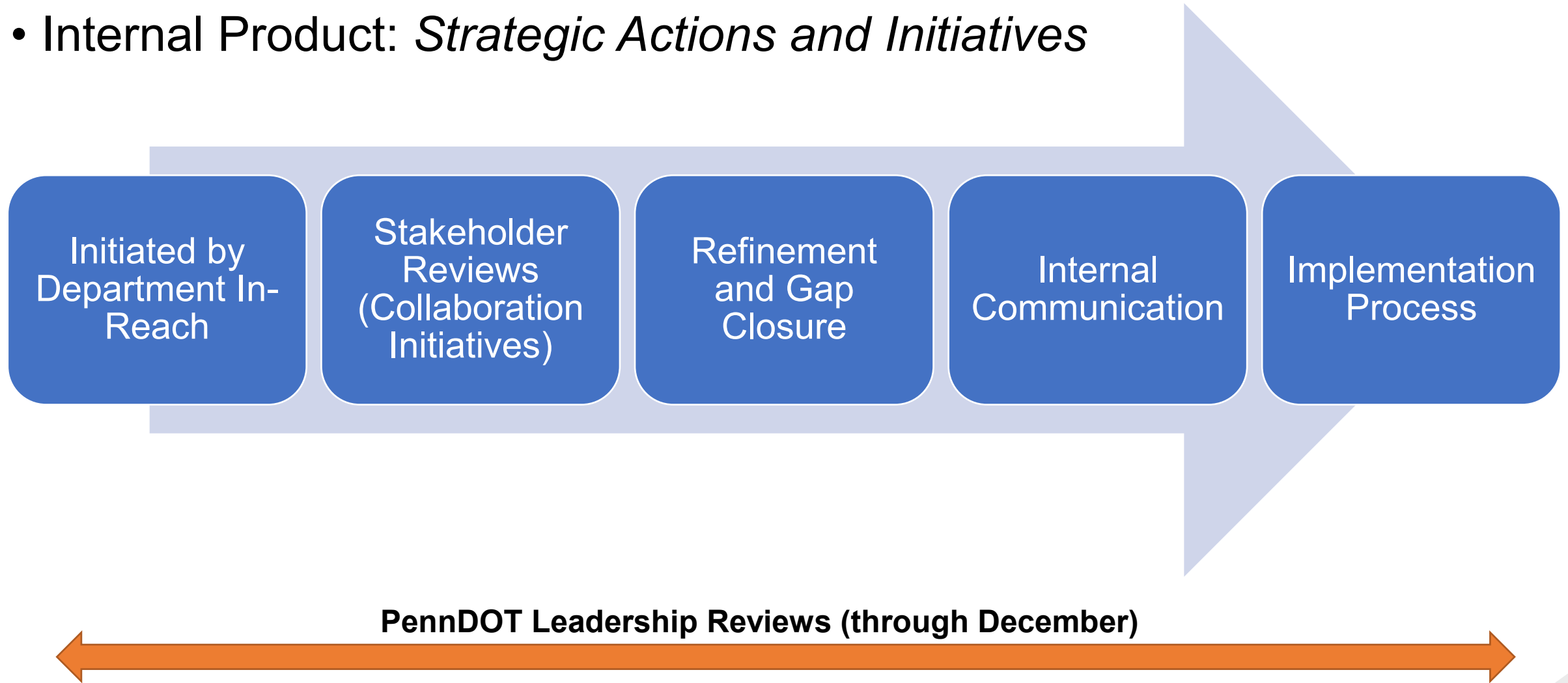
PLAN IMPLEMENTATION

- Early and ongoing focus from the beginning of the planning process
- Development of replicable planning processes, including adoption framework
- Early implementation steps identified through in-reach
- Tracking implementation progress
 - Strategic actions and initiatives
 - Performance and progress measurement



IMPLEMENTATION APPROACH – DEVELOPMENT OVERVIEW

- Internal Product: *Strategic Actions and Initiatives*



IMPLEMENTATION REPORTING

Performance
Measurement through
TPR

PMC Progress Reporting
(2x per year)

STC Update
(Annually)

Periodic External
Updates



TRANSPORTATION PLANNING DATA REPOSITORY

VISION OF DATA REPOSITORY



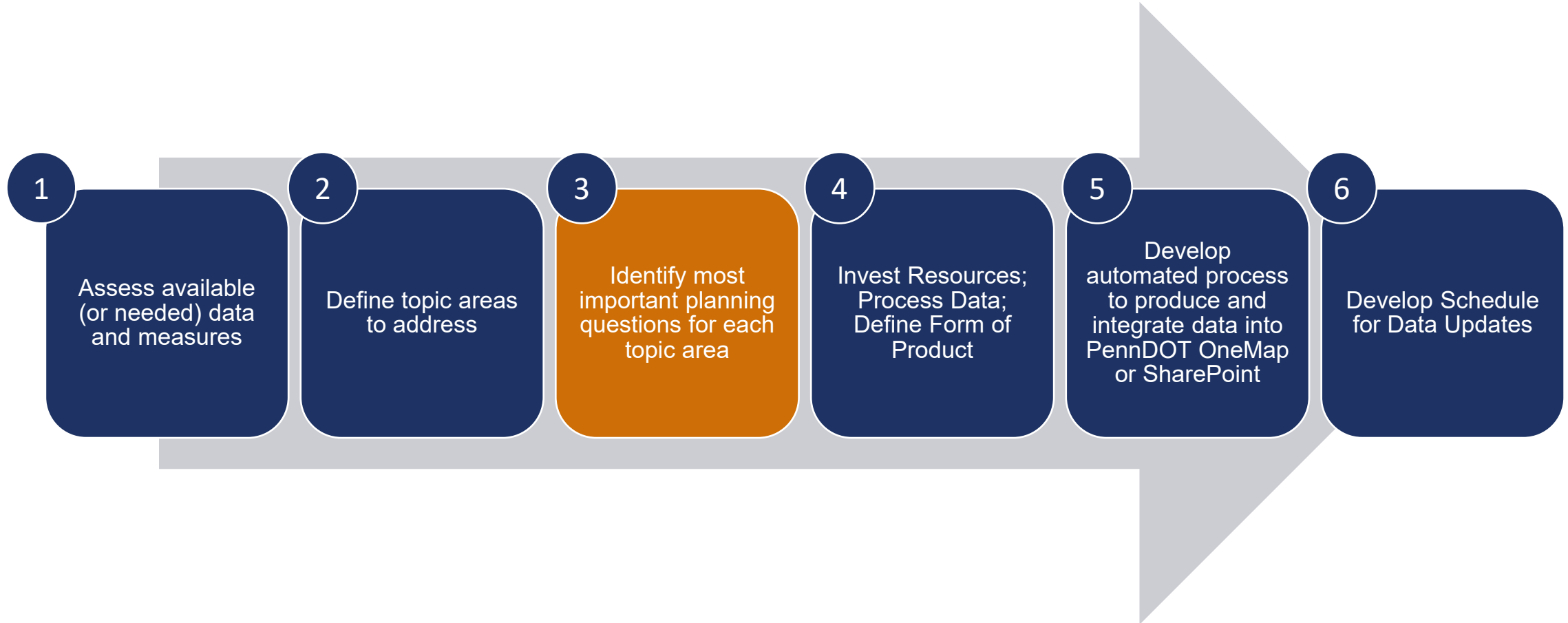
Focus on data that can support solutions to our most frequently asked transportation planning questions



WHY DEVELOP A DATA REPOSITORY?



DEFINING “CORE METRICS” FOR REPOSITORY



EXAMPLE SURVEY RESPONSE QUESTIONS BY TOPIC

Freight

- Where are our regional freight generators?

Infrastructure

- What is the condition of infrastructure throughout the region?

Traffic Demand

- How are traffic volumes changing over time by road?

Travel Time

- What roads are the most congested?

Land Use

- How does land use affect travel patterns?

Travel O-D

- Where are the most common destinations?

Transit

- Where are bus stops in relation to our land use?

Active Transportation

- What are the location and condition of active transportation assets? How much are they used?

Safety

- How are crashes correlated with traffic volume, demographics, etc.?

Environmental Justice

- How does EJ population correlate with land use, infrastructure condition, transit access, etc.?

Environmental and Air Quality

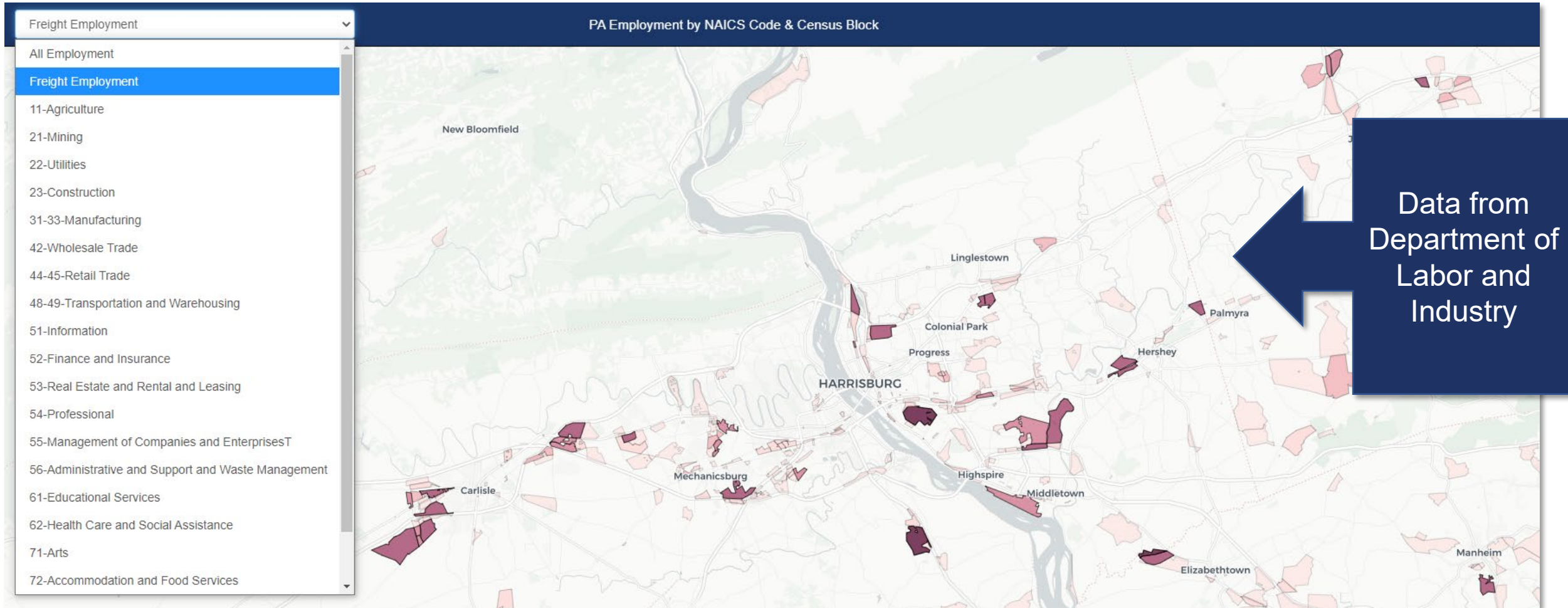
- Where are the air quality monitors and what are recent trends?
- Where has flooding occurred?

Tourism and Recreation

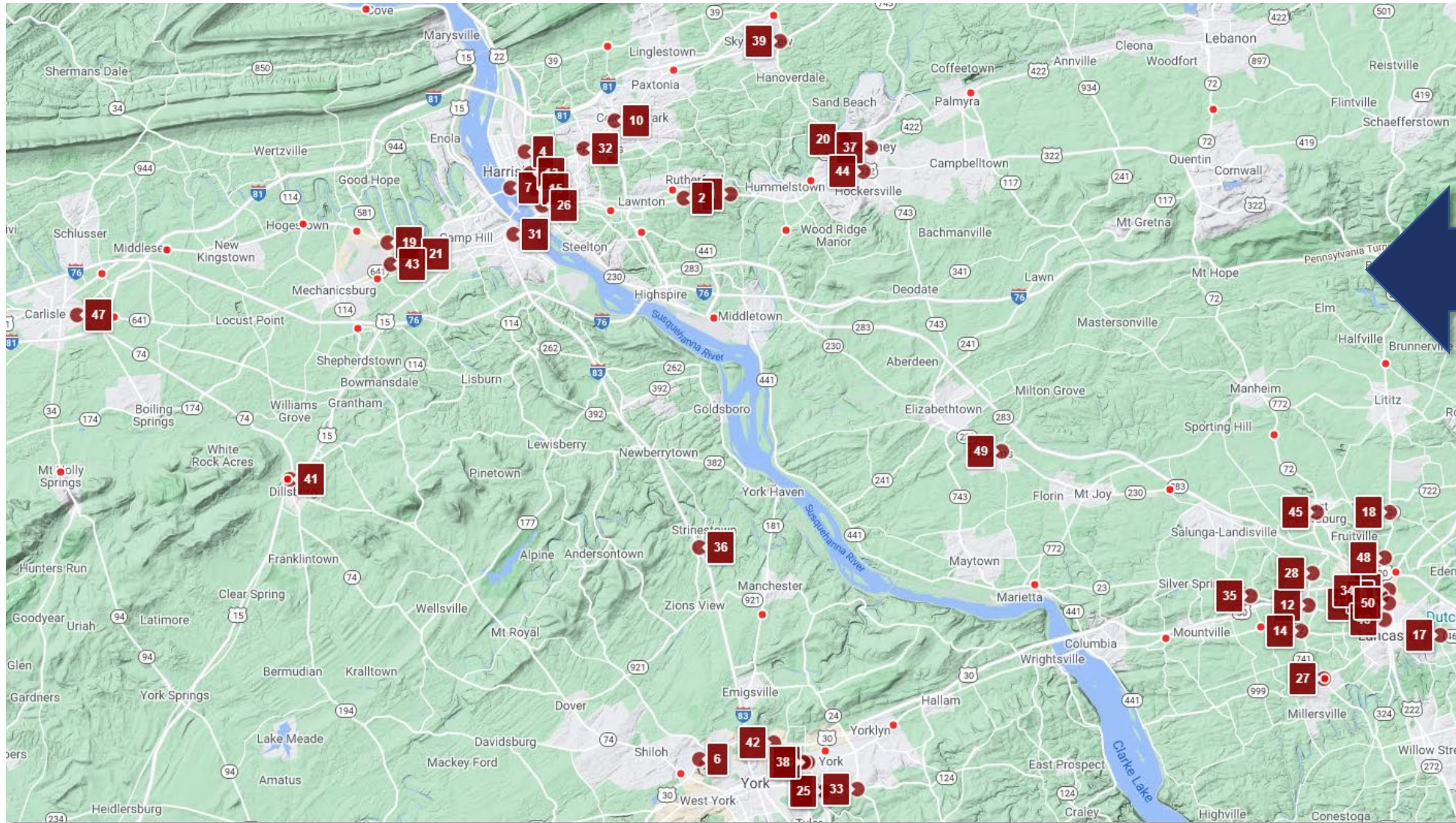
- How does tourism affect traffic volumes?



SAMPLE – VISUALIZING EMPLOYMENT DATA



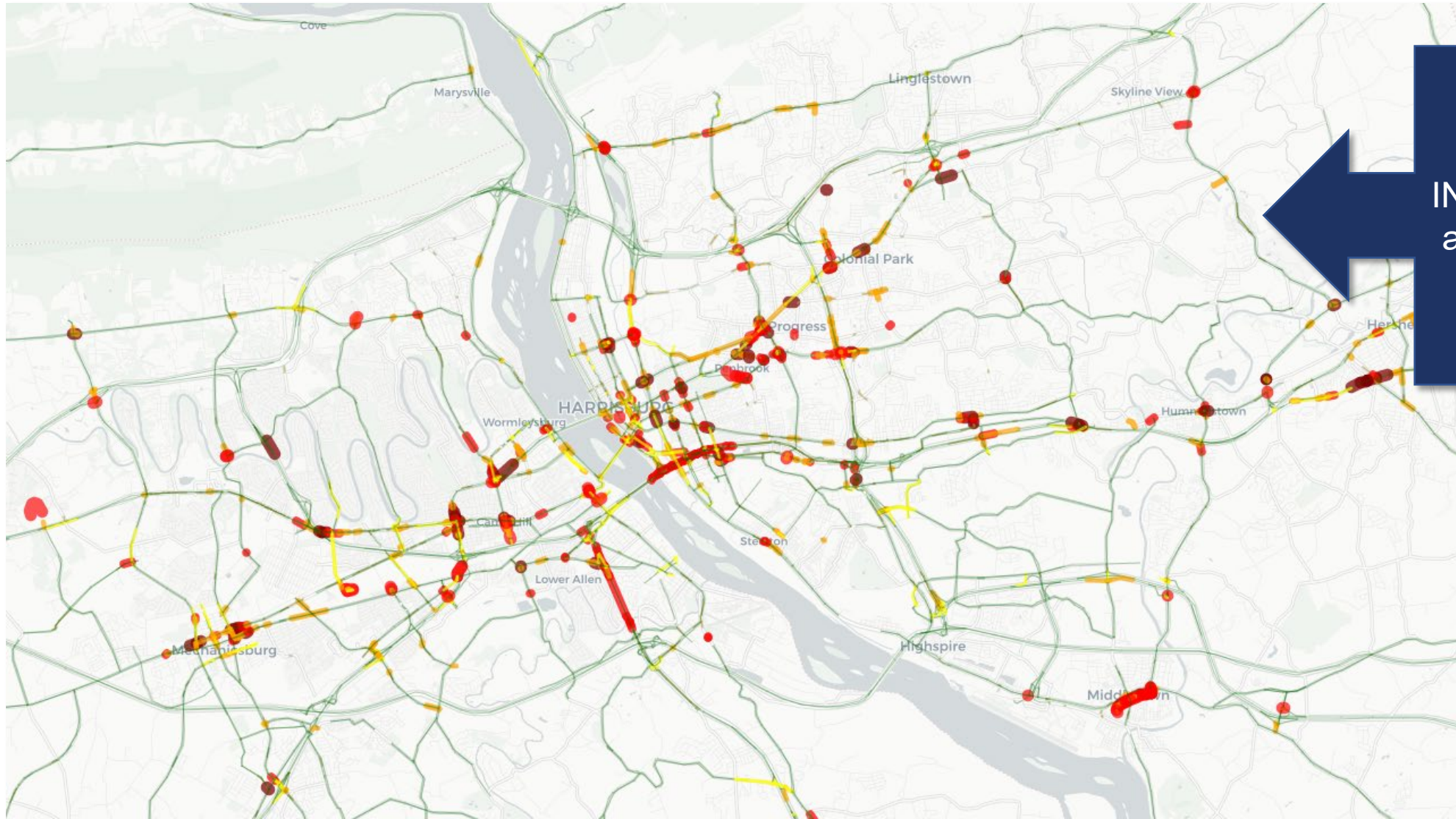
SAMPLE – HIGHEST TRAFFIC VOLUME INTERSECTIONS



Data from
PennDOT
Roadway
Management
System (RMS)
and Signal
Inventory



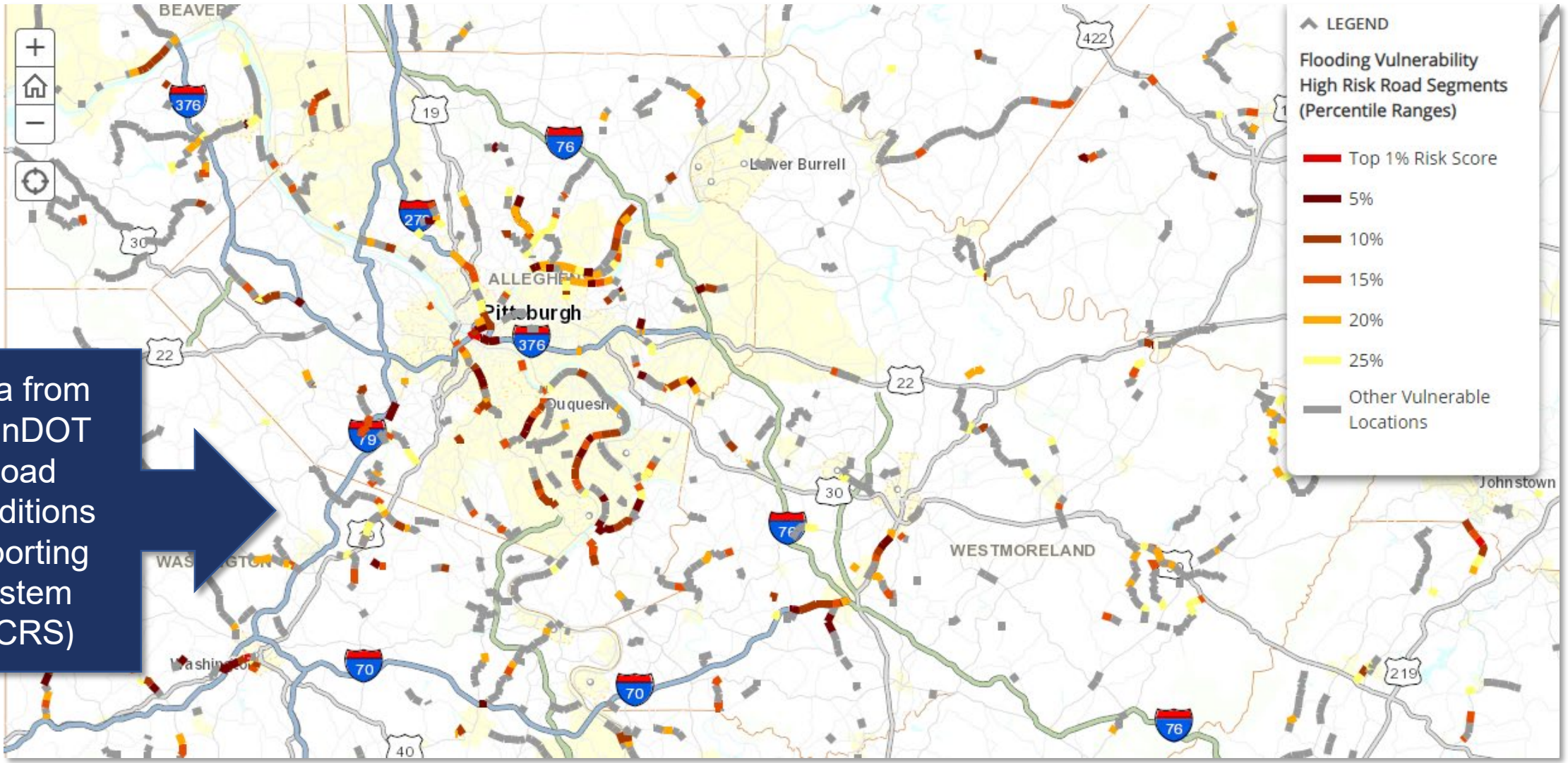
SAMPLE – TRAFFIC CONGESTION



← Data from
INRIX, TomTom
and PennDOT
RMS



SAMPLE – ROAD FLOODING VULNERABILITIES



DATA REPOSITORY PRODUCT VISION

- **Platform**

- PennDOT SharePoint Site
- PennDOT OneMap Folder

- **Content**

- Collect future data questions
 - Allow survey submission
- Core Metric List
 - Direct Planning Partners to Core Metric Products by Topic Area
 - Store Tables on SharePoint
- Respond to FAQ
- Share Case Studies of Data Uses
- Maintain Data Sources Table



DISCUSSION

- **What do you see as key transportation planning data needs?**
- **What examples have you seen of similar efforts to prepare and share planning data?**



UPCOMING PROJECT SCHEDULE

Month	Major Activity
September	Public Comment Period Opens (September 20) Plan Refinement
October	Public Comment Period Closes (October 19)
November	Plan Refinement Continues Plan Finalization
December	Strategic Actions and Initiatives Completion Plan Adoption and Rollout STC Presentation
January 2022	Implementation Begins



Michael D. Rimer, AICP
Transportation Planning Specialist Supervisor
PennDOT Center for Program Development and Management
mrimer@pa.gov

Brian Funkhouser, AICP
Project Manager
Michael Baker International
brian.funkhouser@mbakerintl.com

Dan Szekeres
Technical Manager
Michael Baker International
dszekeres@mbakerintl.com

