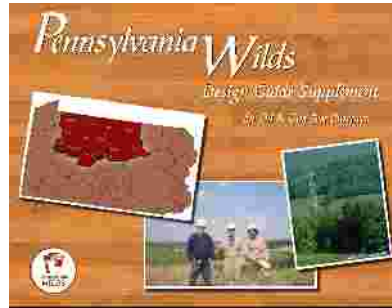
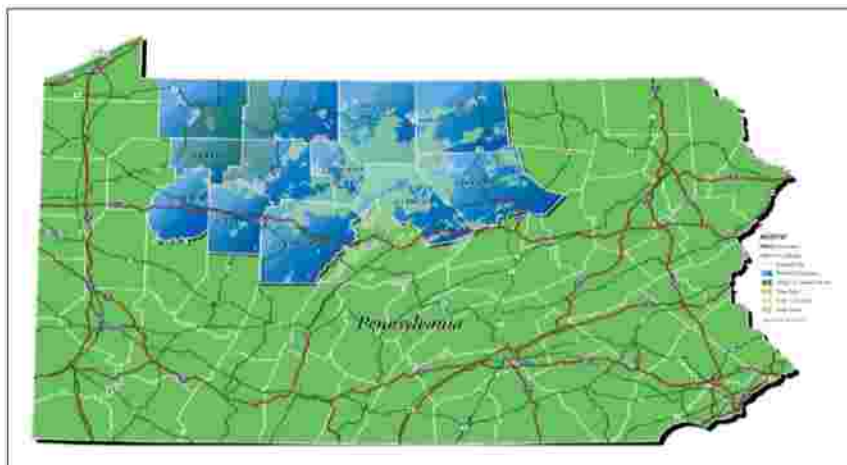


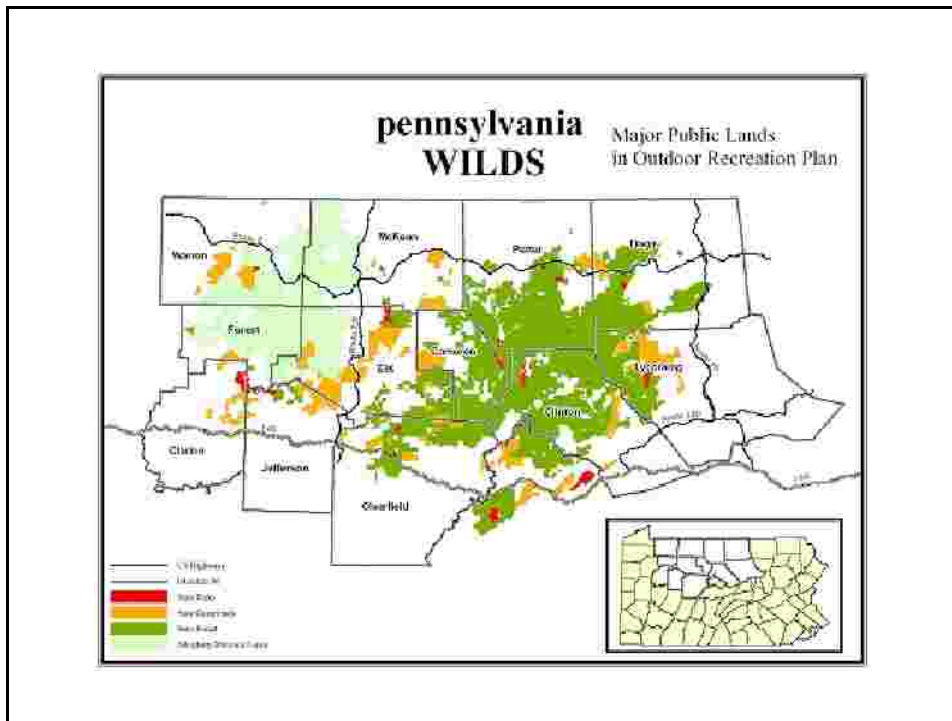
A New Tool for Shale Gas Development



APA-PA Annual Conference
Harrisburg, PA
October 21, 2013

The PA Wilds - A Special Place



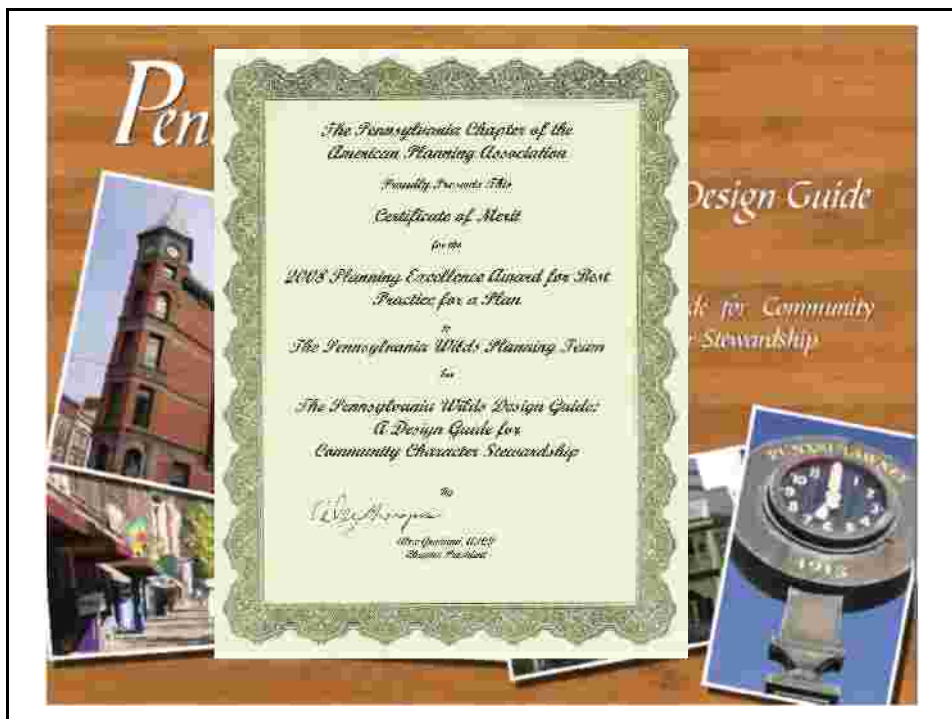
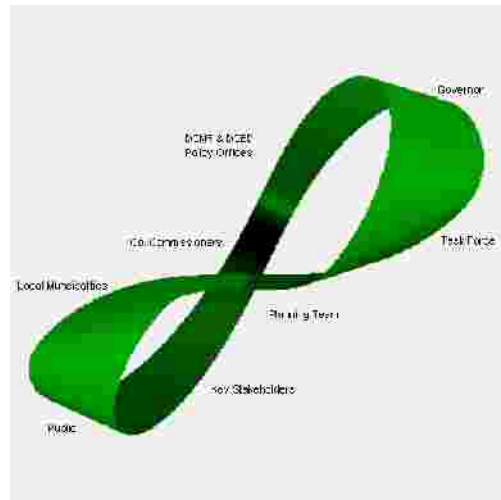


PA Wilds Planning Team *Operating Principles*

The primary responsibility as planners is to identify, enhance, and protect the Commons based on the rightness of our relationships with each other and the earth.

- We will **honor** the local, regional, and state perspectives.
- We will **value** the relationships of humans to the earth.
- We will **promote and enhance** ecological integrity, stewardship and sustainability.
- We will **balance** social, economic, and environmental concerns.
- We will **revisit and restore** the Jeffersonian concept of Life, Liberty and the Pursuit of Happiness.
- We will **respect** the land and those who call it home.
- We will **balance** opportunity with common sense.
- We will **act** today with a **plan** for tomorrow.
- We will **encourage** local dialog and **listen** to what we hear.
- We will **share** what we love with the next generation.
- We will **consider** the synergy of the whole – people, ecosystems and landscapes.
- We will **seek** consensus in all we do.

PA Wilds Planning Team *Organizational Structure*



Pennsylvania Wilds A Guide to Development
in the Oil & Gas Region

I.B: What is a Design Guide?

A Common Tool
A Design Guide is a commonly used tool to steer development patterns and aesthetic qualities in a particular direction. Design Guides have been used in the U.S. for decades, but their use has become more popular with the recognition of public interest in creating healthy, vibrant communities and reducing impacts on the environment.


Sets Design Objectives
This Design Guide sets forth physical design objectives for building placement, architecture, landscaping, signs, lighting, grading, land use management, natural resource conservation, and other related items. This document includes photographs, illustrations, and text descriptions of design elements and land use patterns that are desirable in the Pennsylvania Wilds.

When a Design Guide is established and implemented it can have a positive, vibrant, and long-lasting effect on the way a geographic area appears and functions.

Simple and Flexible
The guidelines and recommendations provided in this document are simple and flexible. When followed, they will protect the region's natural assets and promote a community character that is authentic to the Pennsylvania Wilds and reminiscent of its settings.

Promotes Aesthetic Quality
Use of this Design Guide is voluntary. It is not a replacement for comprehensive plans, zoning ordinances, or subdivision and land development ordinances. Rather, the Design Guide gives direction to ensure respect for the natural environment and to promote certain aesthetic qualities in our existing communities. This Design Guide can supplement and illustrate the intent and vision of comprehensive plans and zoning ordinances, and also can provide constructive ideas to communities that do not have comprehensive plans or zoning.

Defines Expectations
Using this Design Guide, public officials, property owners, developers, investors, and design professionals will know what is desired in the quality and character of new construction, exterior building renovations, subdivision efforts, public improvements, trail land use management, and other related projects.



Design Guide 14

Pennsylvania Wilds

Design Guide Supplement

for Oil & Gas Best Practices









Design Guide Supplement for Oil & Gas Best Practices

- Donation from Shell Appalachia
- Held a Series of Roundtables with O&G Industry Representatives.
- Went through several drafts and revisions.
- Will be disseminated across the region to planners, municipal officials, and industry developers.
- Download both Design Guide & Supplement at www.pawildsresources.org