

# Destination Erie: *A Regional Plan for the 21<sup>st</sup> Century*



*Photos Courtesy of Cal Robinson (Edinboro Lake, left), Visit Erie (Tom Ridge Environmental Center, middle and Perry Monument, right)*

PA Chapter of the American Planning Conference  
2012 Annual Conference  
October 15, 2012

# Destination Erie: *A Regional Vision*



*Edinboro Lake, Photo Courtesy of Cal Robinson*

## What We Will Cover

- 1. Background (David Rouse)**
  - Sustainable Communities Update
  - Destination Erie Application
  - Erie's Planning Legacy
- 2. Scope and Issues (Jake Welsh)**
  - Erie County Region
  - Planning Process
  - Planning Issues
- 3. A “Non-Planner’s” Perspective (Michael Fuhrman)**
- 4. Questions and Discussion**



# Destination Erie: *A Regional Vision*

---

## Background

*partnership for*  
**Sustainable Communities**  
an interagency partnership HUD • DOT • EPA

The Sustainable Communities Planning Grant Program is part of the federal Partnership for Sustainable Communities, which brings HUD, DOT and the EPA together to ensure that the agencies' policies, programs, and funding consider affordable housing, transportation, and environmental protection together.



## Livability Principles

- 1. Provide more transportation choices.**
- 2. Promote equitable, affordable housing.**
- 3. Enhance economic competitiveness.**
- 4. Support existing communities.**
- 5. Coordinate and leverage federal policies & investment.**
- 6. Value communities and neighborhoods.**

## 2011 Appropriations

- \$96 Million for Sustainable Communities Regional Planning Grants
- \$500 Million in Funding Requests from 110 applicants in All 50 States

## Applications from Pennsylvania

1. Lehigh Valley Economic Development Corporation, Bethlehem\*
2. Southwestern Pennsylvania Commission, Pittsburgh
3. Tri-County Regional Planning Commission, Harrisburg
4. City of Harrisburg
5. North Central PA Regional Planning & Development, Ridgway
6. Delaware Valley Regional Planning Commission
7. York County
8. Erie County

\* Preferred Sustainability Status from 2011

**29 Awards out of 110 Applicants announced November 20, 2011**

**2 Awards for Regional Planning in Pennsylvania**

- **Erie County: \$1,800,000**

Funding to develop *Destination Erie: A Regional Plan for Sustainable Development* with the goals of creating a shared vision for a sustainable future and a measurable implementation program.

- **Lehigh Valley Economic Development Corporation: \$3,400,000**

Funding to develop the *Lehigh Valley Sustainability Plan* to promote the adoption of affordable housing policies at the municipal level and foster transit related land development to support public transportation.

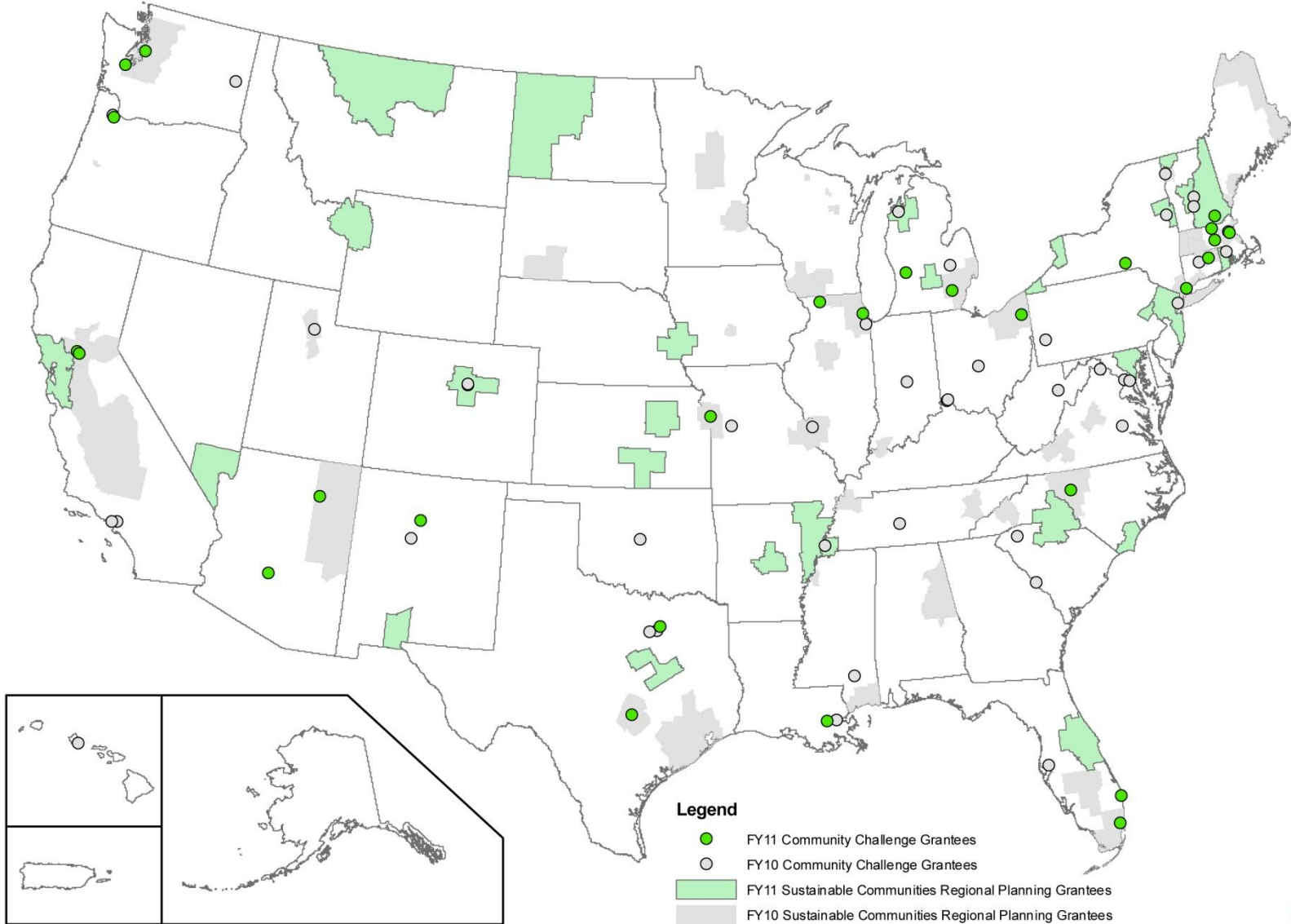
## Pennsylvania Applications

- City of Pittsburgh
- Pennsylvania Department of Community & Economic Development
- City of Philadelphia Planning Commission
- Borough of Clarion
- City of Lancaster

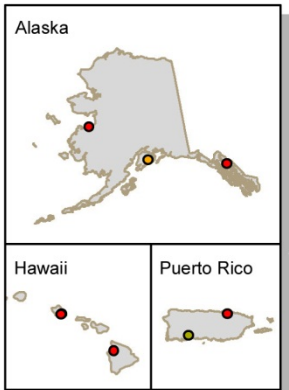
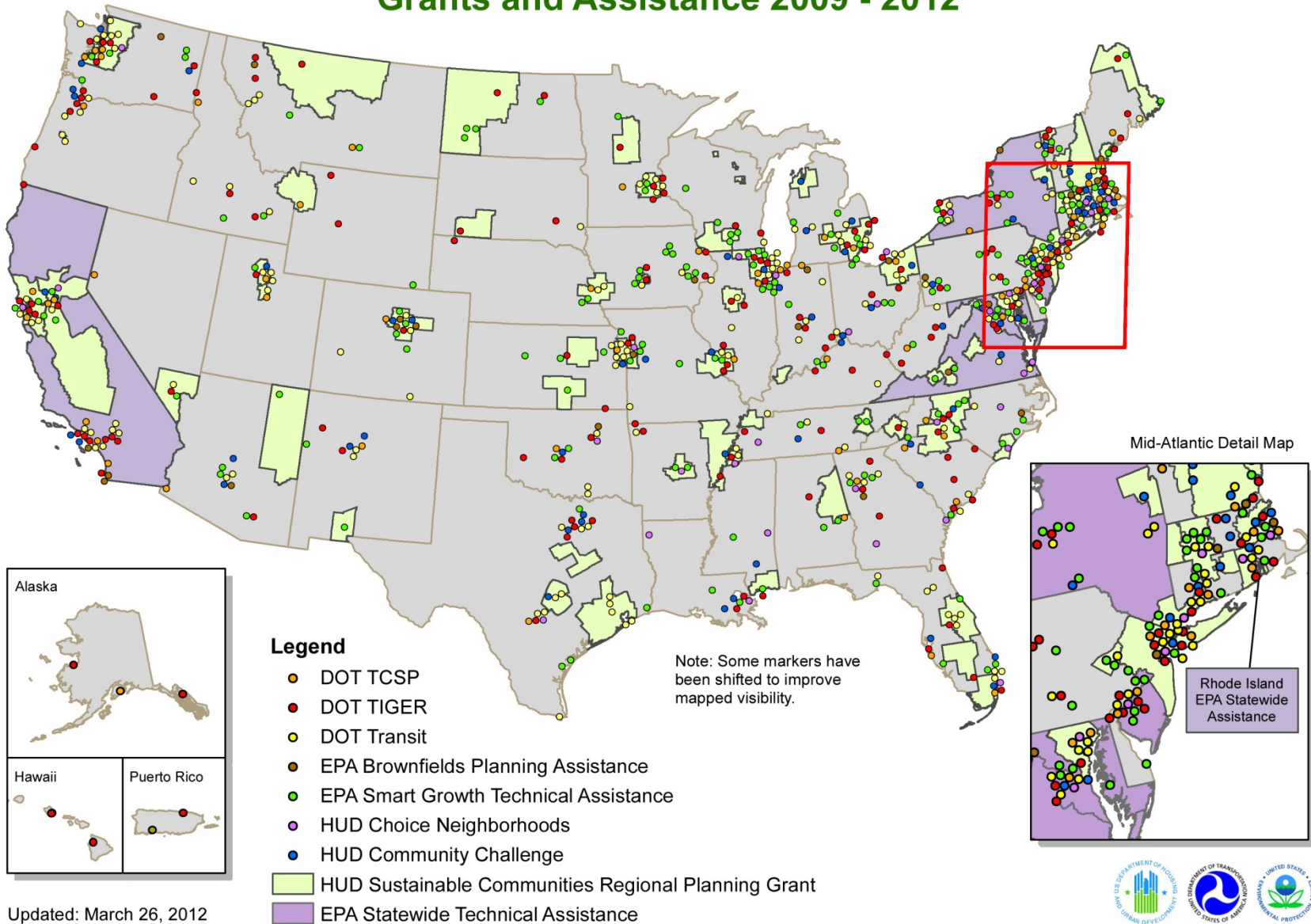
**No Community Challenge Grants Awarded in Pennsylvania FY 2011**



# HUD Sustainable Communities Grantees, FY2010 - FY2011



# HUD-DOT-EPA Partnership for Sustainable Communities Grants and Assistance 2009 - 2012



Updated: March 26, 2012



## What's Next for Sustainable Communities Planning ?

- No FY 2012 Funding
- Uncertain FY 2013 Funding

## President Obama's FY 2013 Budget Included \$100 Million

- \$50 Million for Regional Planning Grants
- \$50 Million for Community Challenge Grants

## 2013 Congressional Budget Included \$0 (Passed June 29, 2012)

*"None of the funds made available may be used for any new grant under the livable communities program of the Department of Transportation or the sustainable communities program of the Department of Housing and Urban Development or to implement any transfer of funds for any such new grant."*

## 2013 Senate Budget Included \$50 Million for Planning & Challenge Grants

# Destination Erie: Ingredients of a Successful Application

- Broad-based Regional Consortium (72 Members)
- Geographic scope: Erie County (mid-sized region)
- Well-conceived work program / identified capacity to carry it out
- Addressed HUD's rating factors
- Unique aspects that set it apart
  - Economic strategy: five counties in three states
  - Erie's planning legacy

# Erie's Planning Legacy

Received August 27th 1861 of the Secretary of the Commonwealth a duplicate copy of this plan to be returned if necessary.

John Robinson

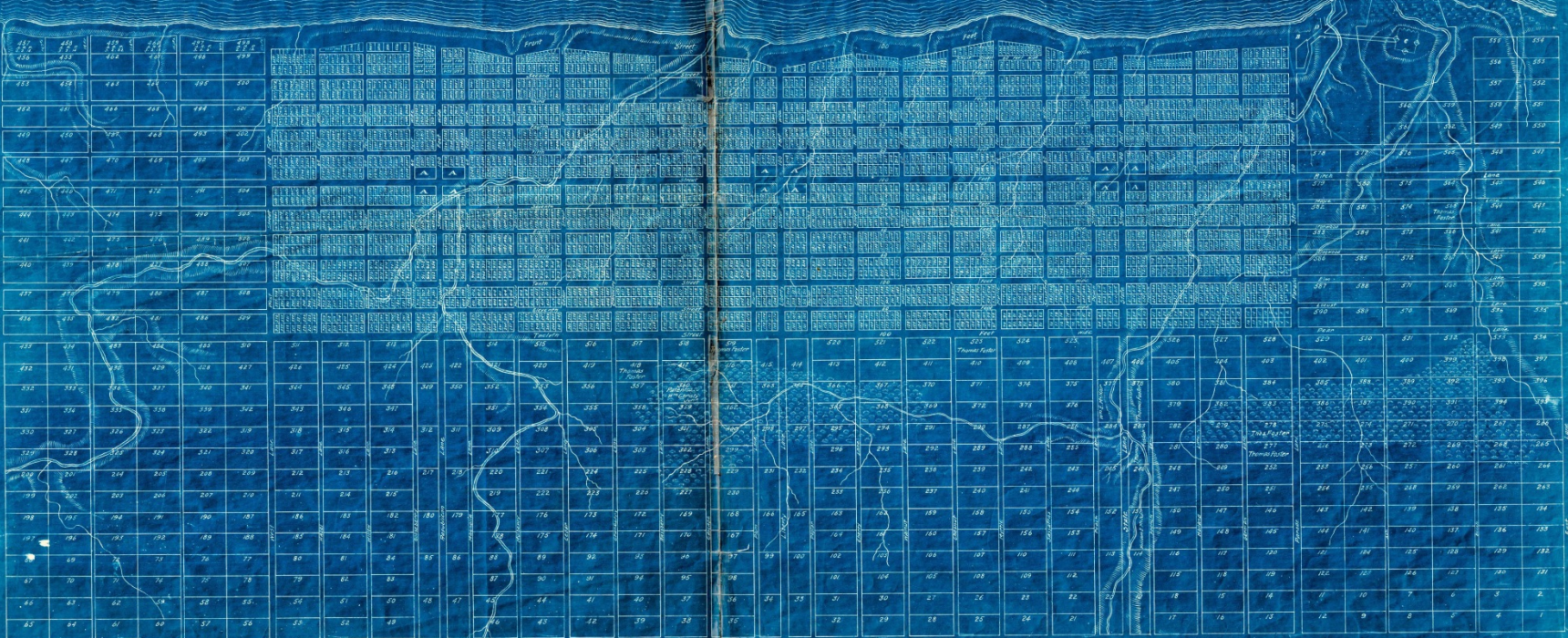


## EXPLANATION

The Town of ERIE is divided into three equal divisions. A denotes the public Square. B is Stone marked ERIE 1795. Lat 12° 31' 14" N. Lon 82° 0' 0" W. C the Port lately erected by the United States. D the Saw Mill. Within the blue shade there is contained 40 acres sealed to the United States. Within the yellow 24 1/2 acres and 120 perches reserved for the use of a Mill or Mills. All the regular lots are 60 feet 6 inches front and 165 feet deep. The dimensions of the irregular lots are contained in a book accompanying this plan. All the regular lots are 3 acres each the irregular ones have their contents entered upon them.

100. Town to be bounded on the South side of Front street and the Bay.

## PART OF PRESQU' ISLE BAY



In testimony that the same is a true copy of the same as shown to the Secretary of the Commonwealth of Pennsylvania at the City of Philadelphia on the 27th day of October 1795.  
 Henry Jones  
 Secretary of Internal Affairs

115  
Elicast

A correct Plan of the Town of ERIE and Outten, 1795.  
 With Notes  
 And E. Elliott

Plan of Town of Erie, 1795

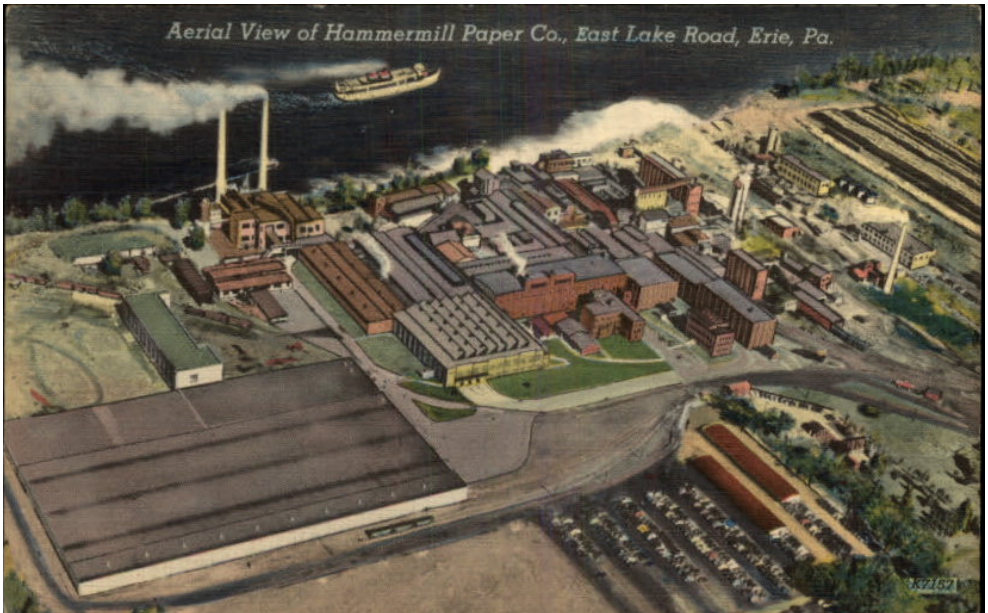
KODAK SAFETY FILM  
HAER PA-34-2  
6



Railway in Corry  
(Library of Congress)

General Electric, 1941  
(Library of Congress)

Hammermill Paper Co.  
(eriepostcards.com)



WALDAMEER BEACH, SHOWING COTTAGES AND HOTEL - ERIE, PA.



State Street looking N. from 8th Street, Erie, Pa.



Waldameer Beach Postcard  
(unknown)

Boston Store  
(Under the Clock)

State Street North  
(Epodunk.com)





# Erie's Planning Legacy: 1963 Rotival Plan



I-79 to Pittsburg

Bayfront Parkway, next to  
Downtown

Bayfront View

Maurice Rotival

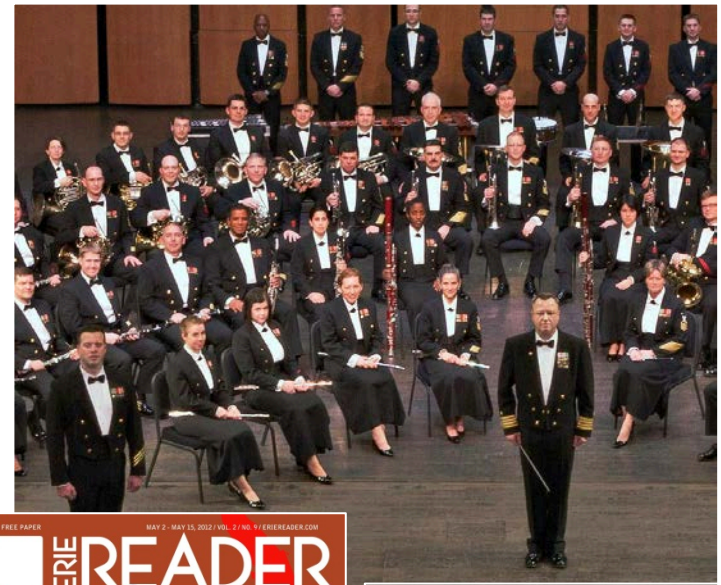
Photos:

Skyscraperpage.com,  
Chamber of Commerce  
Yale Digital Database



# Perry 200 Celebration

- Celebrating Commodore Perry / Battle of Lake Erie during War of 1812
- Sparked Erie's growth and development
- 30 Events over 18 months
- Coordination to generate enthusiasm, gain public input, educate public

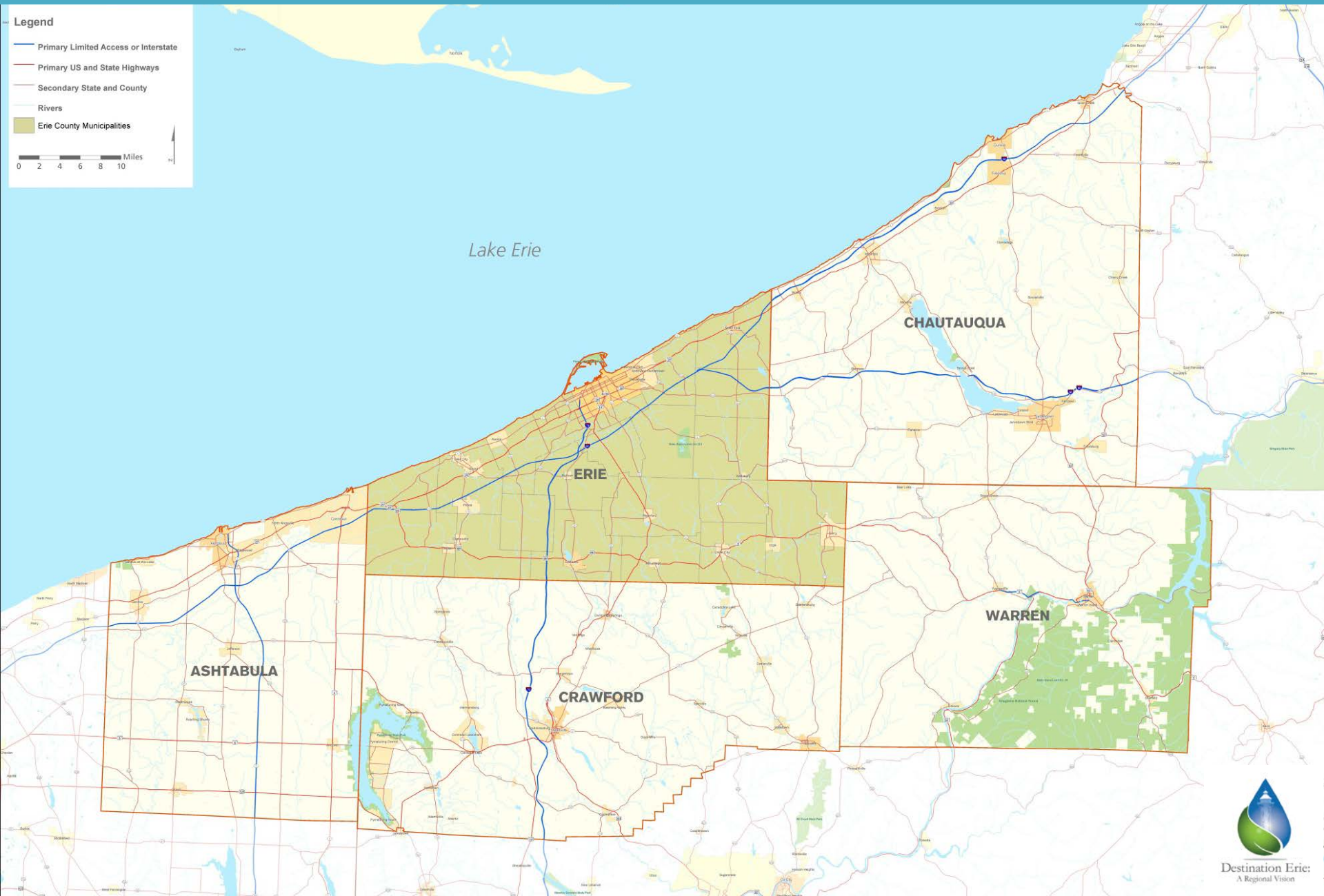


# Destination Erie: *A Regional Vision*

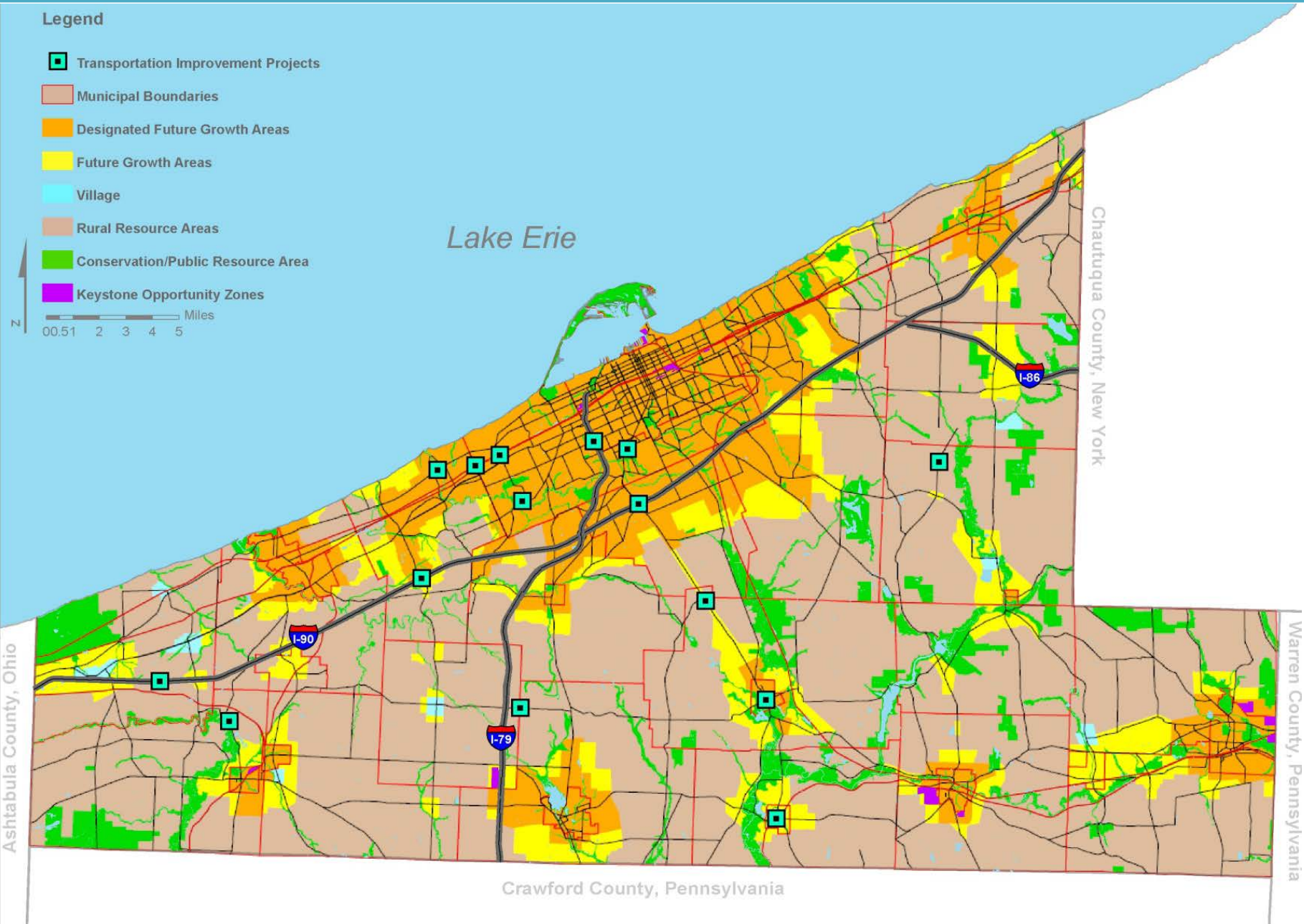
---

## Scope and Issues

# Destination Erie: *A Regional Vision*



# Growth and Preservation Areas (2003 Comprehensive Plan)

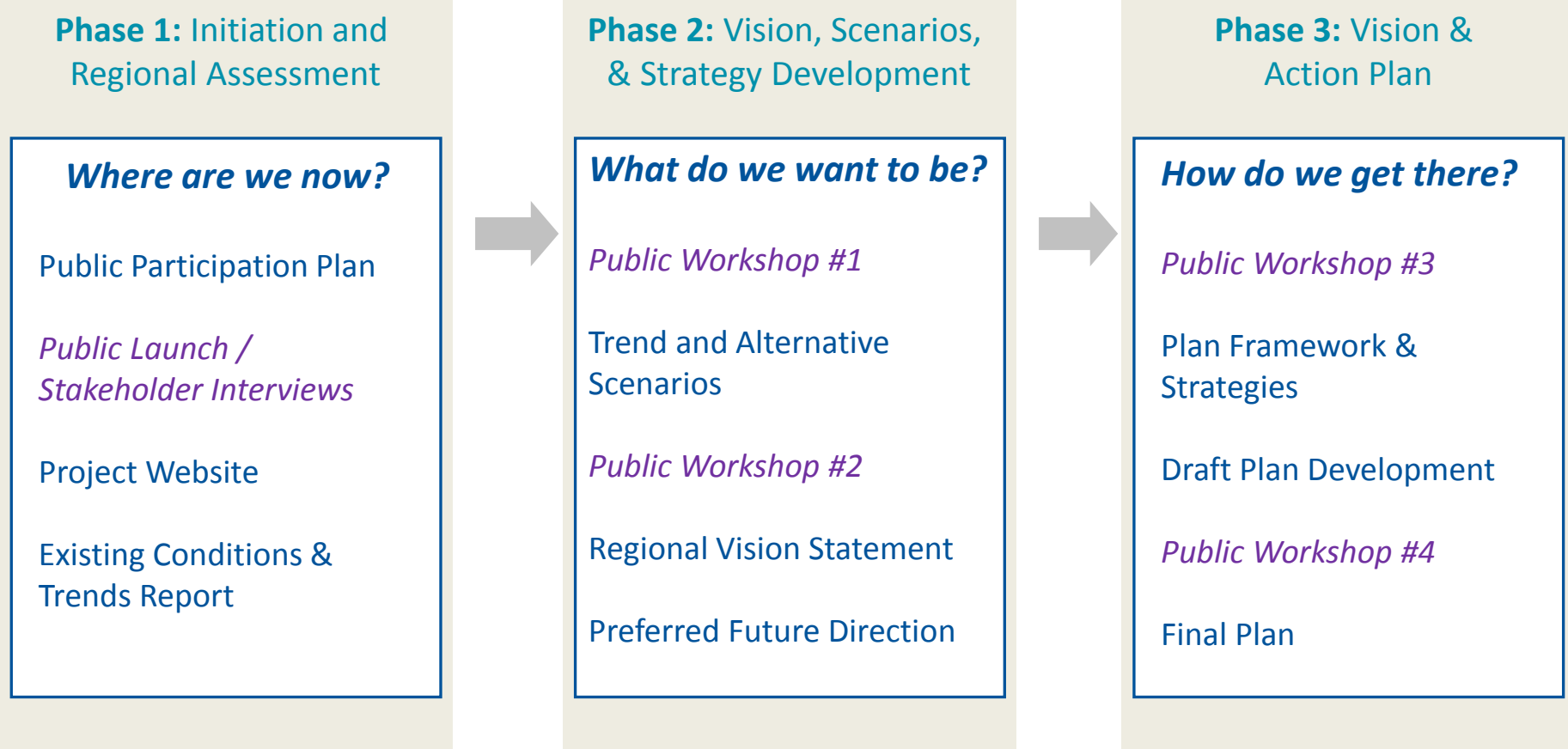


# Sustainable Communities Regional Planning Grant Program

- Supports multijurisdictional efforts to integrate planning and investments
- Address Challenges:
  1. Economic competitiveness and revitalization
  2. Social equity, inclusion, and access to opportunity
  3. Energy use and climate change
  4. Public health and environmental impact
- Outcomes:
  1. Regional plans aligned with local plans & investments
  2. Aligned region with federal planning & investment
  3. Increased participation by marginalized groups
  4. Reduced disparities among regional population
  5. Decrease vehicle-miles-traveled and emissions
  6. Decrease housing & transportation costs
  7. Increase infill redevelopment and minimize displacement
  8. Increase low income access to transit



# Regional Planning Process



Mar 2012 – Dec 2012

Sep 2012 – Oct 2013

Nov 2013 – Feb 2015

**CAPACITY BUILDING**

**PUBLIC ENGAGEMENT**



# 1 Task Force / 5 Work Groups

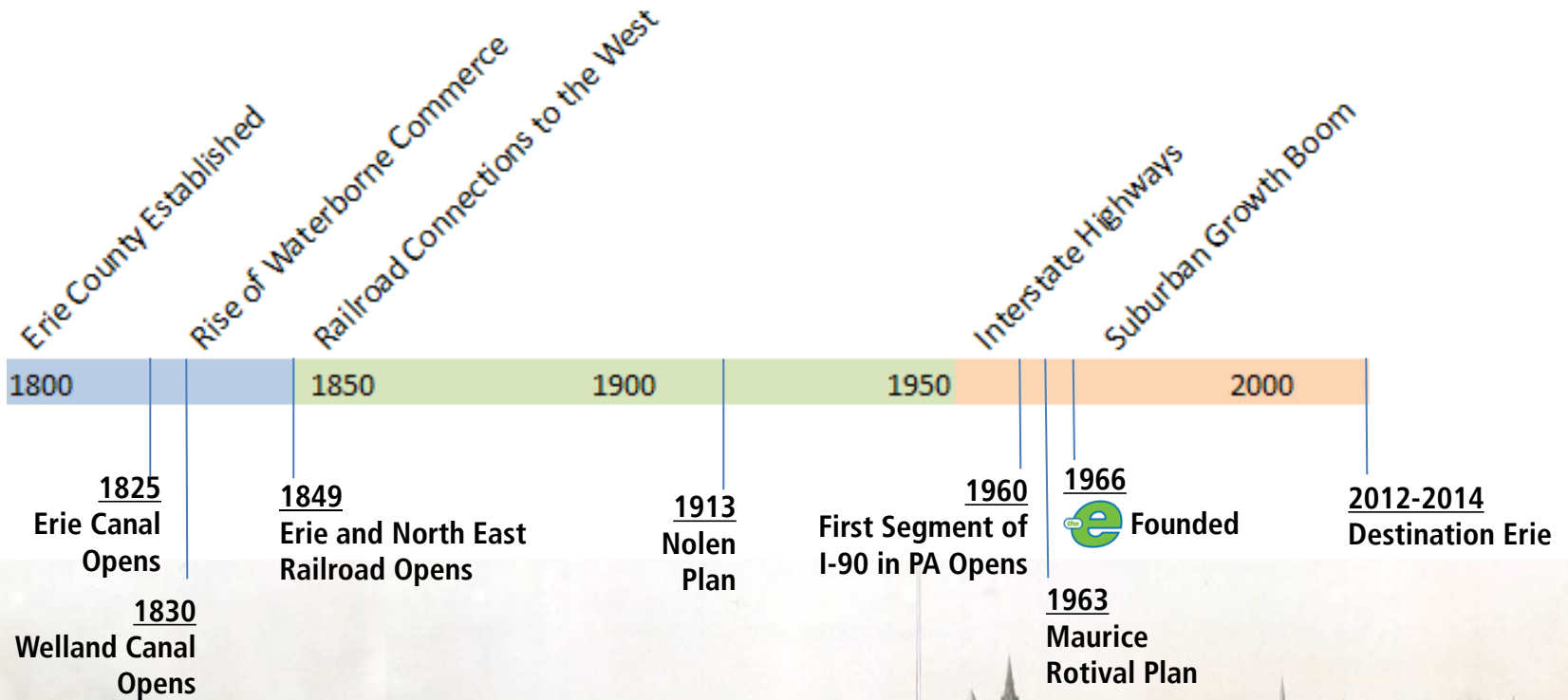
- **Community Engagement Task Force** (Improve public participation, involve hard to reach communities across region)
- **Work Groups**
  - **Transportation and Infrastructure** (transportation, mobility, water and sewer, telecommunications, energy, freight, shipping)
  - **Environment** (water, environmentally valuable land, parks, recreation and open space, agricultural resources, climate and air quality, historic and cultural resources)
  - **Housing and Neighborhoods** (community form, housing, affordability)
  - **Economy and Workforce** (employment, economic growth, tourism, linkages to education, housing, transportation)
  - **Community Facilities** (regional institutions and services, major cultural and nonprofit organizations, public safety)





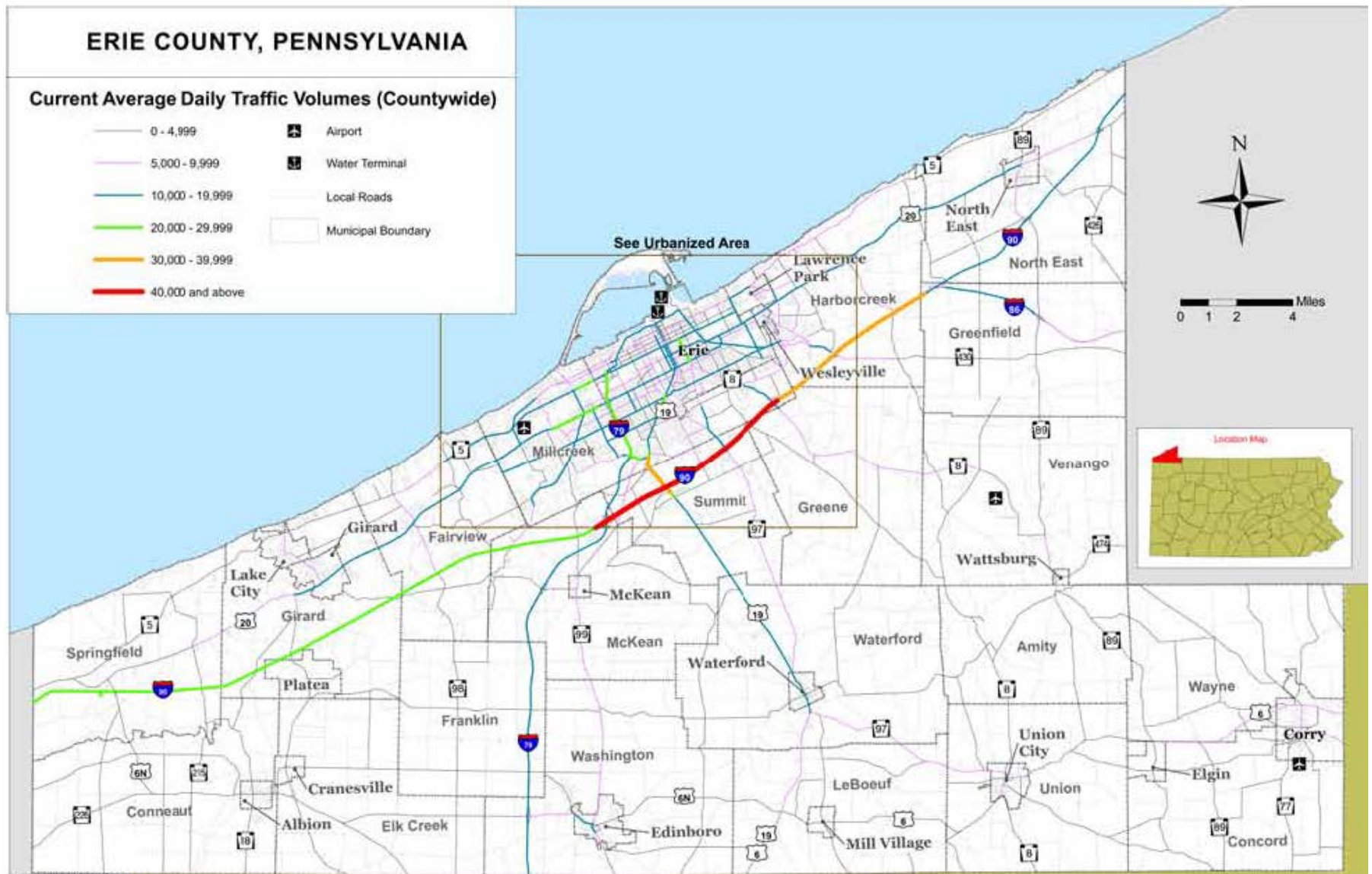
# Transportation and Infrastructure

## Milestones in Erie Transportation



# Transportation and Infrastructure

## Roadway System



# Environment

## Agricultural Resources

- Preserved Farmland
- Agricultural Security Area (ASA)
- Agricultural Land Use

0 0.5 1 2 3 4 5 Miles



Lake Erie



Chautauque County, New York

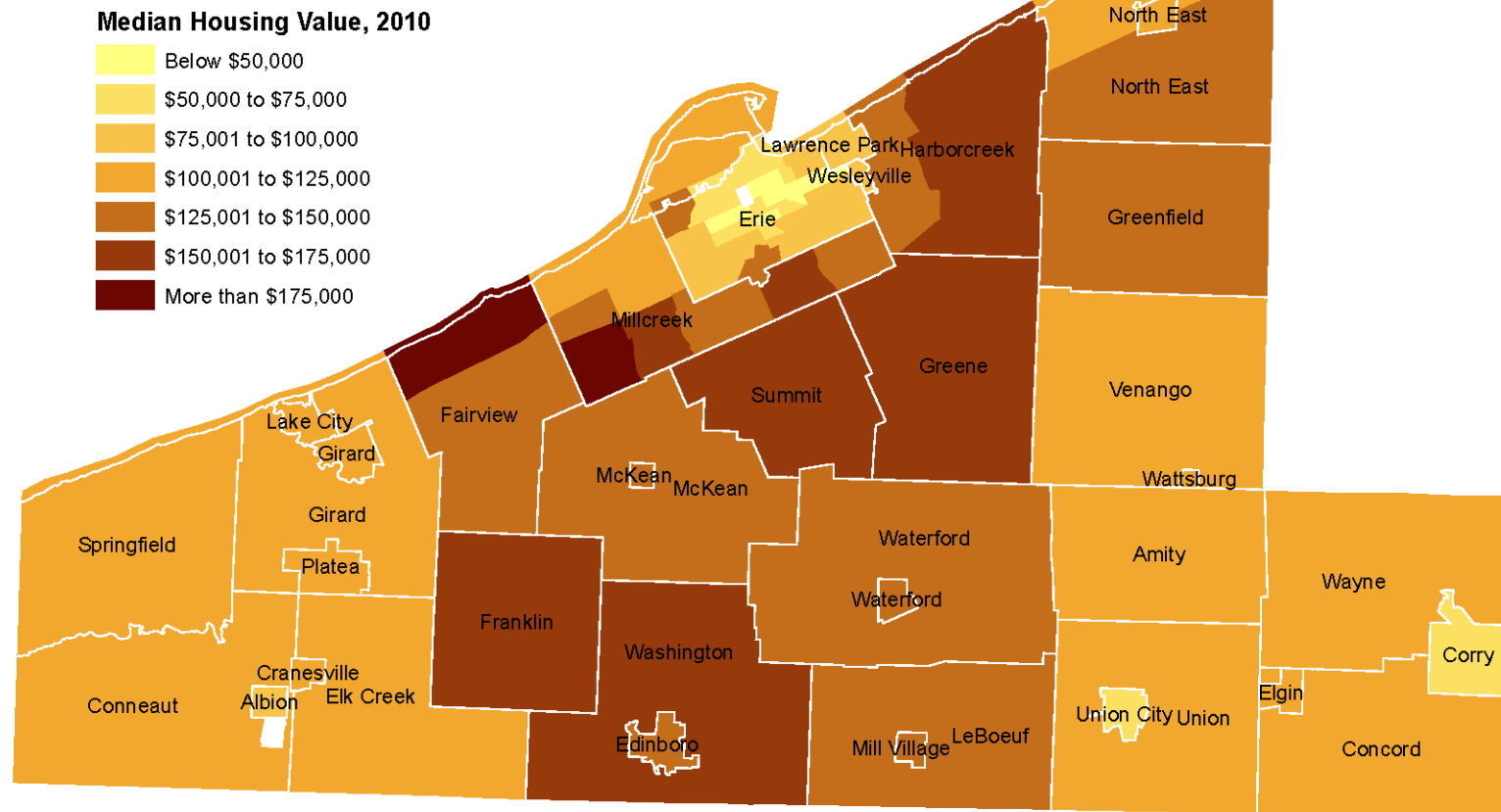
Warren County, Penns

Crawford County, Pennsylvania

# Housing and Neighborhoods

## Value of Owner Housing Stock

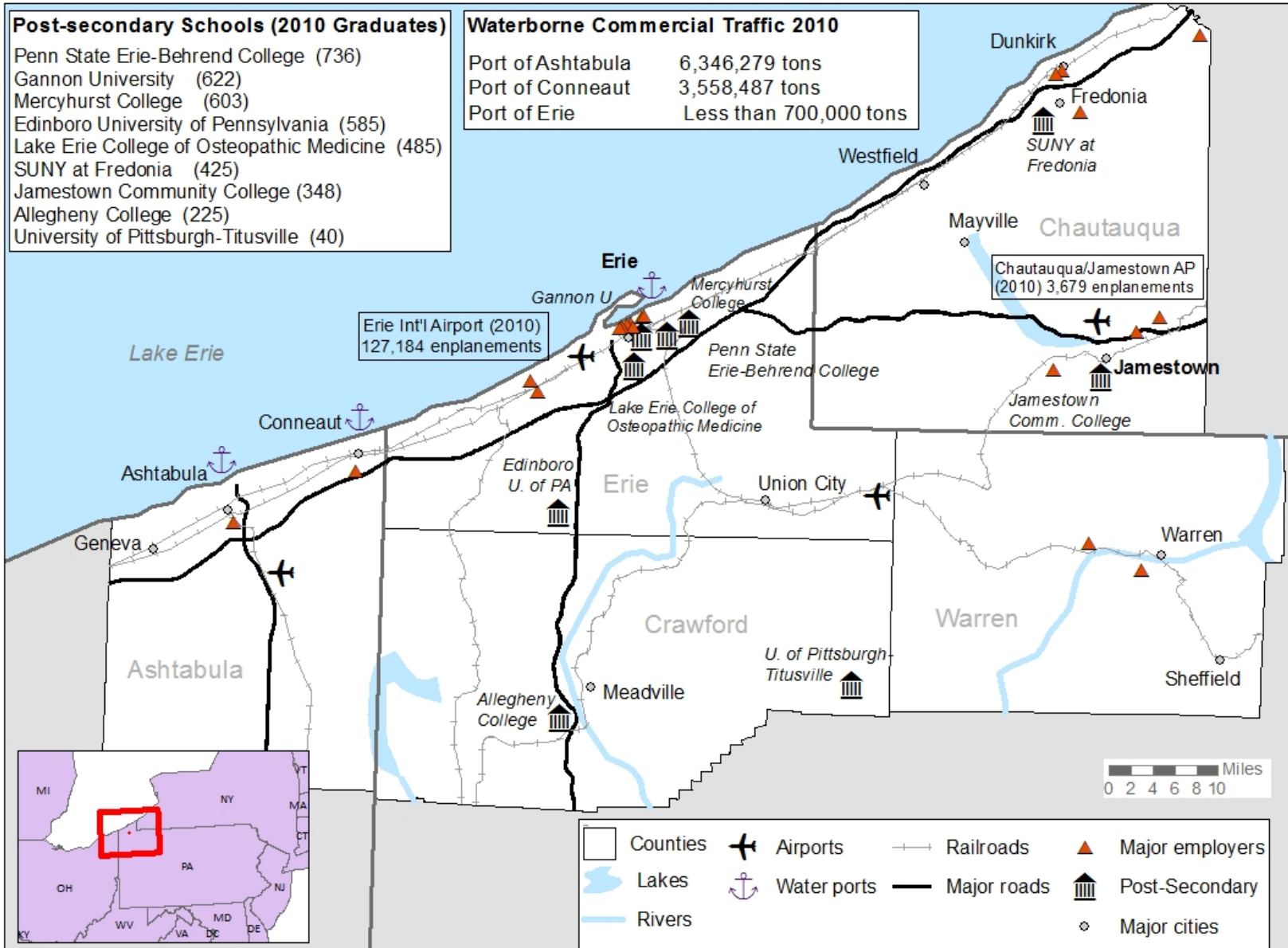
- Newer housing in townships is higher-valued housing
- Median housing value in Erie City is \$82,400 compared to \$111,300 for Erie County (\$159,300 in PA)
- Wide range of median housing values across the County with lowest median values found in central Erie City and several older boroughs



# Economy and Workforce

## Examples of Larger Regional Economic Assets

### Destination Erie: A Regional Vision



# Community Facilities

## Health Resources

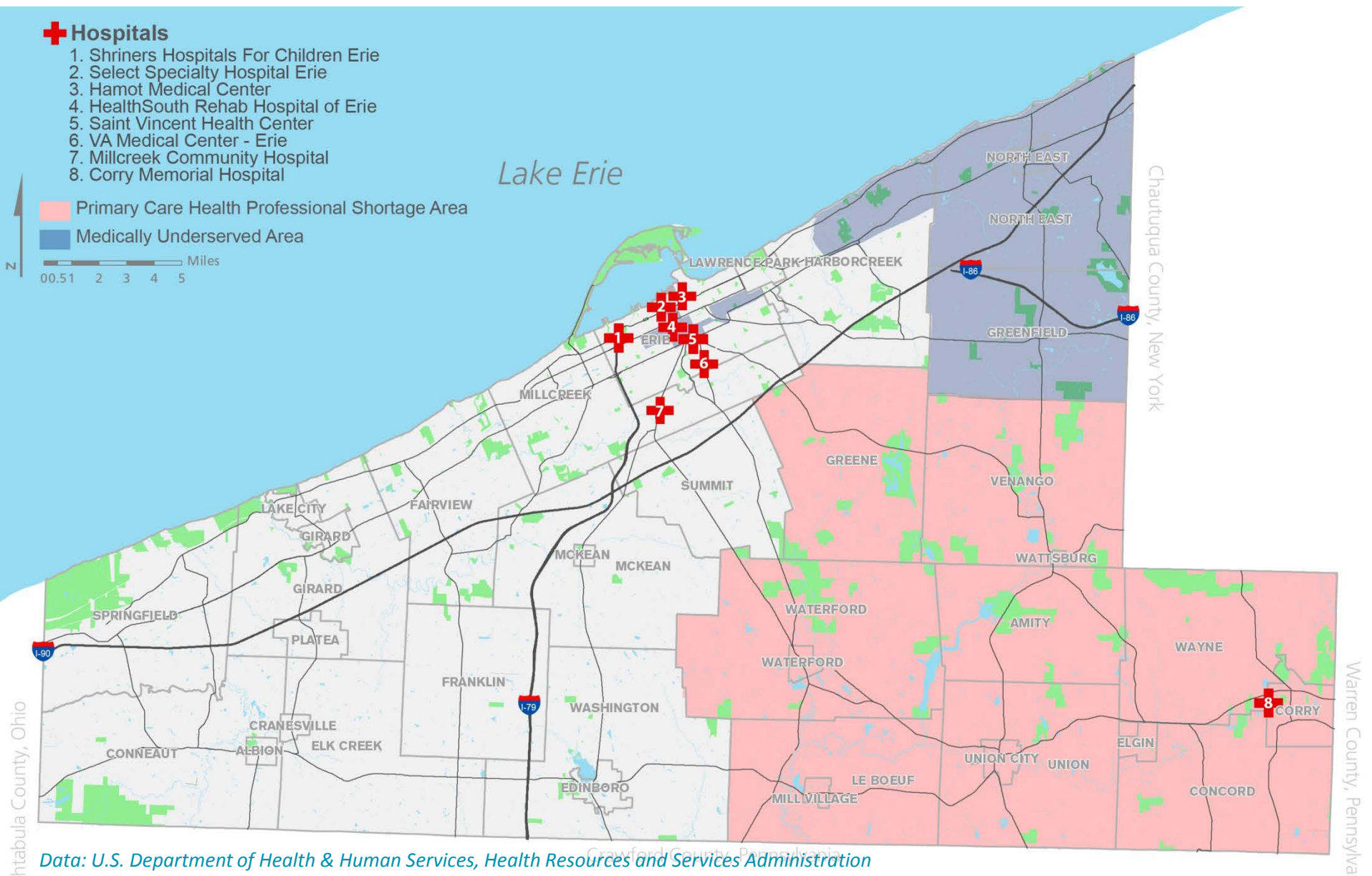
### + Hospitals

1. Shriners Hospitals For Children Erie
2. Select Specialty Hospital Erie
3. Hamot Medical Center
4. HealthSouth Rehab Hospital of Erie
5. Saint Vincent Health Center
6. VA Medical Center - Erie
7. Millcreek Community Hospital
8. Corry Memorial Hospital

Primary Care Health Professional Shortage Area

Medically Underserved Area

Miles  
0 0.5 1 2 3 4 5



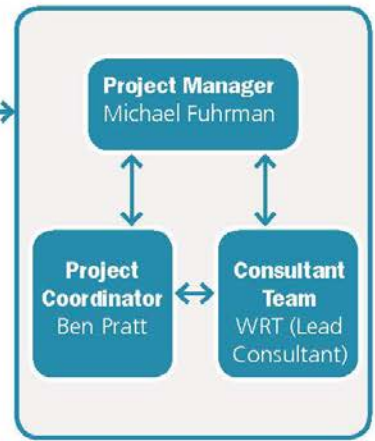
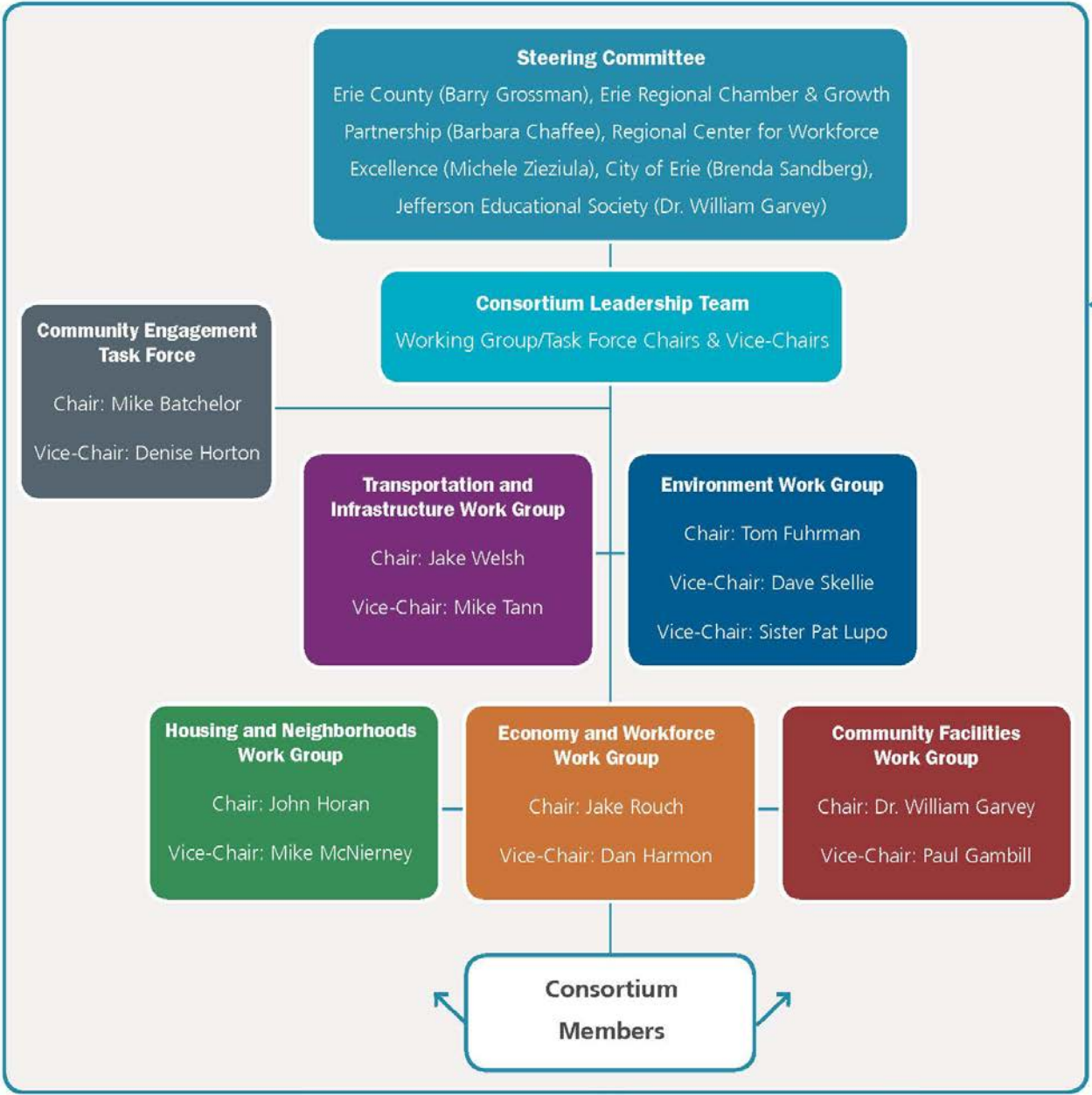
Destination Erie: *A Regional Vision*

---

A “Non-Planner’s” Perspective

# Regional Planning Organization

**Destination Erie: A Regional Vision Consortium Organization Chart**





# Community Engagement

- Public Workshops
- Meetings in a Box
- Open Houses, Events
- Website, Social Media
- Community Engagement Task Force
- Focus Groups



**Upcoming Events**

- The Plan
- The Process
- The Key Issues
- Consortium Members
- Get Involved

**Upcoming Events**  
Public Workshops, Meetings & More!

» October 1st - Public Workshops - 6:30PM to 8:30PM - Penn State Behrend  
» October 2nd - Public Workshops - 6:30PM to 8:30PM - Edinboro University

## Destination Erie: A Regional Vision

**Destination Erie: A Regional Vision** is a regional plan for sustainable development, designed to combine community insights with a team of some of the nation's best regional planning experts to create the comprehensive vision to build economic competitiveness by connecting housing with good jobs, healthy environment opportunities, quality schools and transportation.

The success of **Destination Erie: A Regional Vision** depends on community engagement. The 3 phased planning process will gain public input and buy-in through public workshops, small group/focus group meetings, use of the project website and social media, targeted outreach, surveys, media outreach, focus groups, stakeholder interviews, and special events.

For questions or comments, contact Michael Fuhman, Project Manager at [mfuhman@eriecountygov.org](mailto:mfuhman@eriecountygov.org) or Ben Pratt, Project Coordinator at [bpratt@eriepa.com](mailto:bpratt@eriepa.com)

## Regional Videos



# Destination Erie: *A Regional Plan for the 21<sup>st</sup> Century*



*Photos Courtesy of Cal Robinson (Edinboro Lake, left), Visit Erie (Tom Ridge Environmental Center, middle and Perry Monument, right)*

## Questions and Discussion

PA Chapter of the American Planning Conference  
2012 Annual Conference  
October 15, 2012