

Good *design*
is
Good *business*















Facade Improvement Design Consultations



Fabric Row



New sign on existing frame



Door

Trim

Awning



Notes

Cornice

- Remove cornice capping on west and south facades.
- Repair/replace original cornice where needed with matching architectural details. Prime and paint.

Brick

- Existing brick to remain.

Upper Windows

- Scrape and repaint 6 windows including sills. Repair as needed.

New Projecting Sign

- Install new projecting sign, on existing frame: Howard's Store, Home & Office Décor.

Awning

- Remove pant roof and repair wall as needed.
- Install new, retractable, fabric awning, on metal frame.

Store Front Windows

- Remove siding from storefront façade. Install 2 new, storefront windows with metal frames and transoms. Recreate glazed jambs on sides of windows.

Door and Door Signage

- Remove security grille above door.
- Install new glass door with metal frame.
- Install door decal signage -building number and hours of operation.

Window Boxes

- Install 2 new window boxes.

Bench

- Remove existing bench.

Alternate 1

- Install 6 new, six-over-six, wood, energy efficient windows.
- Install light in soffit above door.
- Install spotlights in interior soffit of storefront window to illuminate displays.
- Install new light fixtures, with gooseneck arms, above awning.
- Install new, open grill grates at storefront windows and door.

COMMUNITY DESIGN
COLLABORATIVE

Project number

2012-31

Date

08/30/13

Scale

4th Street Fabric Row

Facade Study 1 - Howard's Store (Home and Office Decor)
746 S. 4th St. Philadelphia, PA 19147

The Community Design Collaborative's products are intended to provide visual concepts and to assist in project design and planning. All drawings are limited to conceptual design and are neither intended nor may be used for construction. Neither the Community Design Collaborative nor the project volunteers assume responsibility or liability for the technical accuracy of drawings or for any unauthorized use.

COMMUNITY DESIGN
COLLABORATIVE

Oriental Kitchen



NEW EXTERIOR SIGN

RECOMMENDED IMPROVEMENTS:

- REPLACE EXISTING SOLID SECURITY GATES WITH OPEN GRATE STYLE.
- REPLACE EXISTING BOX SIGN WITH NEW POLYCARBONATE SIGN W/ PAINTED GRAPHICS & EXTERIOR ILLUMINATION.
- REPLACE EXISTING STOREFRONT DOORS AND WINDOW TO MATCH EXISTING ADJACENT TENANT STOREFRONT.
- INSTALL NEW FABRIC AWNINGS (2) STYLE TO MATCH EXISTING ADJACENT AWNINGS. PROVIDE LETTERING ON AWNING AT ENTRANCE.
- INSTALL (2) NEW PAINTED WOOD PLANTERS AND PLANTINGS.
- INSTALL NEW "GREENSCREEN" STYLE TRELLIS OVER PAINTED PLYWOOD.
- INSTALL PAINTED AWNING FRAME OVER "GREENSCREEN" AND PLANTER.
- INSTALL (9) GOOSENECK STYLE CAFE EXTERIOR LIGHTS.
- REPAIR AND PAINT EXISTING DOORS AND WOODEN FENCE.
- REPLACE DAMAGED CURBS AND CONCRETE WALK.



1 EXISTING CONDITIONS



2 RECOMMENDED IMPROVEMENTS

COMMUNITY DESIGN
COLLABORATIVE

Project number
2011-26
Date
4/17/12
Scale
NO SCALE

Project Name rSTORE: DESIGN CONSULTATION FOR COMMERCIAL CORRIDOR FACADES
FRANCISVILLE NEIGHBORHOOD DEVELOPMENT CORPORATION
Drawing Title ORIENTAL KITCHEN 919 N 18TH STREET

The Community Design Collaborative's products are intended to provide visual concepts and to assist in project design and planning. All drawings are limited to conceptual design and are neither intended nor may be used for construction. Neither the Community Design Collaborative nor the project volunteers assume responsibility or liability for the technical accuracy of drawings or for any unauthorized use.



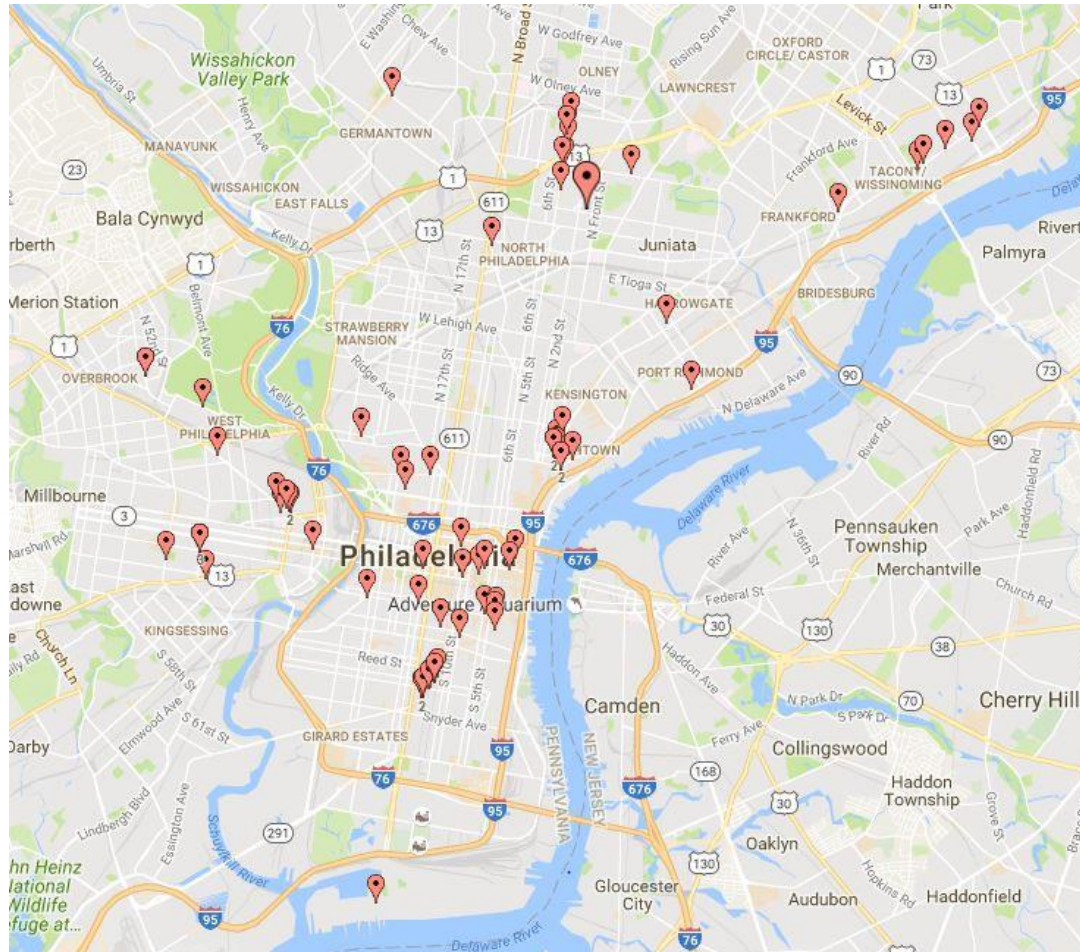
Department of Commerce
CITY OF PHILADELPHIA
LIFE • LIBERTY • AND YOU™

#storefrontchallenge



2016 Storefront Challenge

Nomination Locations



batchgeo

Honor the Past Finalist

Wm. Mulherrin Son's | 1355 N Front Street



before



after

Amazing Awnings Finalist

Puddin's Cake Corner | 4814 Princeton Avenue



before



after

BEST deSign (tie)

Rybrew Café | 2816 W. Girard Avenue



before



after

Trendsetter Award Finalist

Sam Stern | 3621 Germantown Avenue



before



after

Extreme Makeover Finalist

Larchwood Flats | 501 S 52nd Street



before



after

Window Display Finalist

Totem Brand | 535 South Street



before



after

Painted Lady Award

Reed's Coffee and Tea House | 3802 Lancaster Avenue



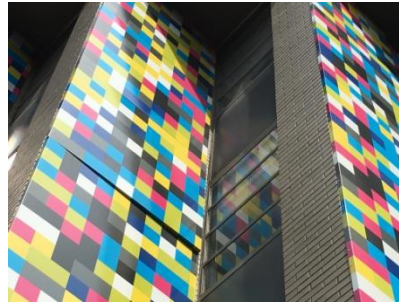
before



after

Best Overall Finalist

PhillyCAM | 699 Ranstead Street



before



after

Best Overall Finalist

Neighborhood Potters | 2034 Fairmount Avenue



before



after



