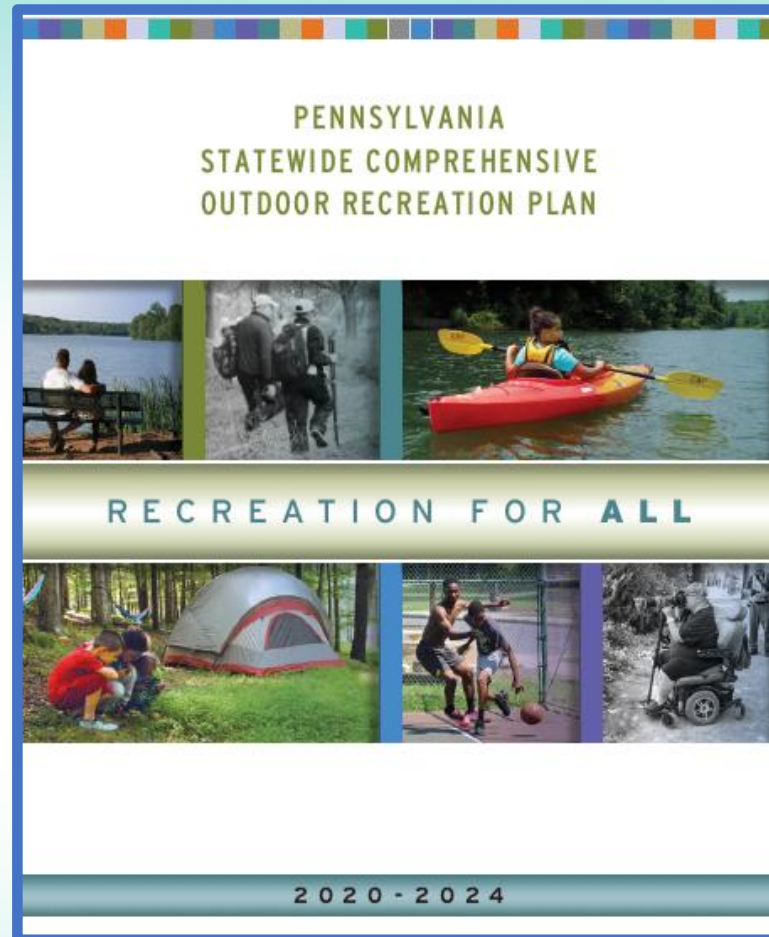


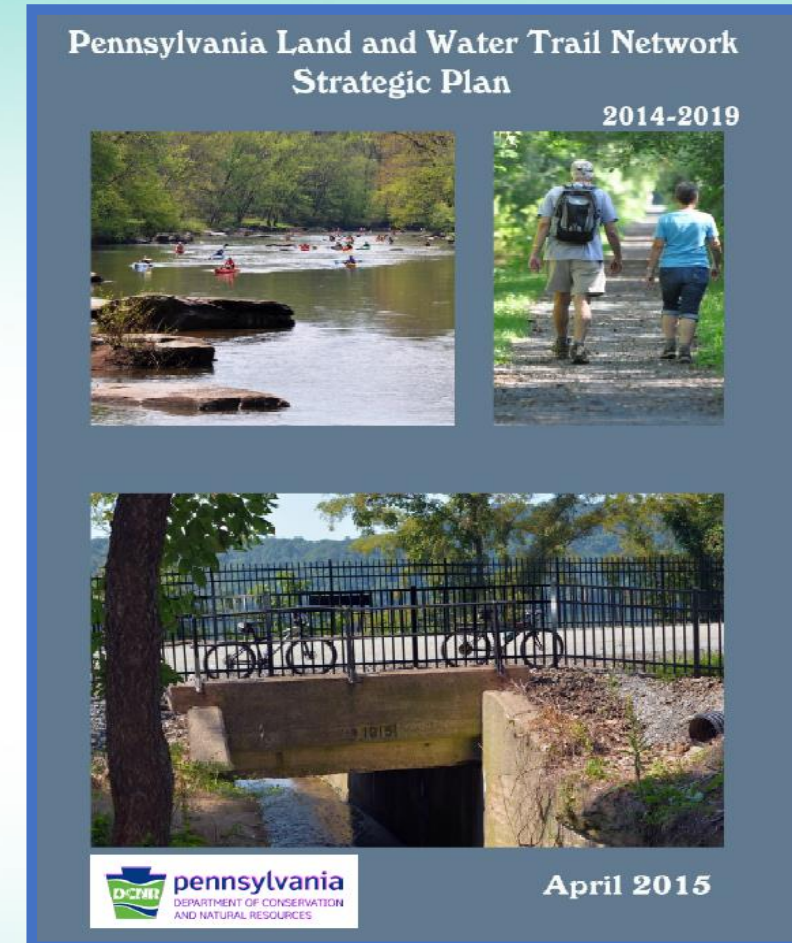
Pennsylvania's Outdoor Recreation & Trail Network Strategic Plans

2020 APA PA Annual Conference
October 19, 2020

Alex MacDonald, Chief
Greenways, Trails and Statewide Planning
Section,
Bureau of Recreation and Conservation



#10 plan - 1964-2020



#3 plan - 2001-2019
release by end of 2020



Recreation Plan Vision

Enjoyable outdoor recreation is welcoming to all and accessible in every Pennsylvania community.

Trail Vision

Develop a statewide land and water trail network to facilitate recreation, transportation and healthy lifestyles.



Priority Areas



Health and Wellness



Recreation for All



Sustainable Systems



Funding and Economic Development



Technology

Outdoor Recreation Plan

Five years

5 Priority Areas

20 Recommendations

70 actions

Join our Thursday morning
(11-12) webinars starting
October 15

2020-2021 DCNR grant
requests



Trail Network Strategic Plan

7 Recommendations

1. Close Priority Trail Gaps = a trail within 10 minutes of every citizen.
2. Coordinate funding programs.
3. Cultivate a variety of partnerships.
4. More opportunities for everyone to regularly use a trail.
5. Connect communities and community assets.
6. Maintain and improve existing land and water trails.
7. Promote Pennsylvania's trails and their benefits.

39 Actions

*Gaps

*Major Greenways

*Regional efforts

*Engaging &
Welcoming

*User groups



Over 12,000 Pennsylvanians responded....

- Lion Polls (fall 2018/spring 2019) –“Pennsylvanians”
- Online Survey (summer 2019) non-random-“8,000+ Outdoor Enthusiasts”
- Local Recreation and Park Provider Survey
- Focus Groups – Blacks & Hispanics
- Access to PA’s Outdoor Areas
- Trail Surveys

***Reports posted on DCNR’s Outdoor Rec Plan
webpage: [Plan Link](#)***



Providers should avoid creating new infrastructure until current maintenance needs are met.

2. Trail Use

- Top facility mentioned*
- More trails that connect different areas*
- Desire for single use trails*
- Need for better signage*
- Expand motorized*



Pennsylvania's Priority Trail Gaps

First identified in 2009

Identify priority projects

Criteria was vague

2018 – Workgroup
developed new criteria
and process

Current criteria to be considered a Priority Trail Gap includes:

- Gap is along a Major Greenway or Regionally Significant Trail
- Connects two existing segments of trail or connects an existing trail to a state park, state forest or key community
- The gap is 5 miles or less
- The trail itself has been formalized in an official planning document



112 Priority Trail Gaps. Represent 200 miles to be built & 62 bridge projects. (46 gaps closed since 2009)

Pennsylvania's Priority Trail Gaps

<http://www.gis.dcnr.state.pa.us/trailgaps/>

Help



pennsylvania
DEPARTMENT OF CONSERVATION
AND NATURAL RESOURCES

Enter a ZIP/City/Address

Find

Select query:

Find Trail Gap by County

Search for:

Select the County to search

Clear

Legend

Trails

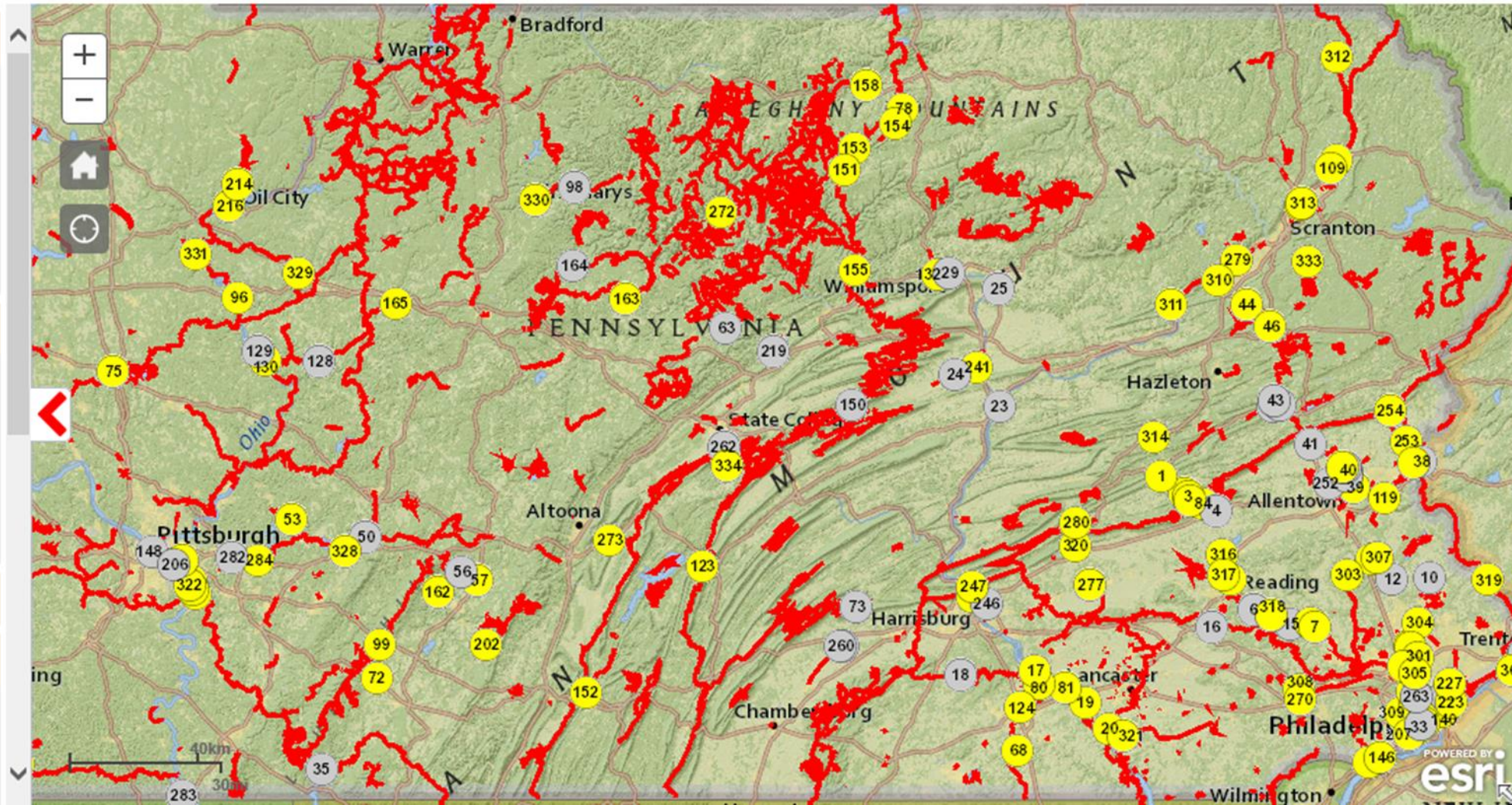
Open Trail Gaps

Closed Trail Gaps

Print

Further Information

Priority Trail Gaps are missing sections of trail that are less than 5 miles, are along trails that have been identified in an official planning document, and connect existing land-based

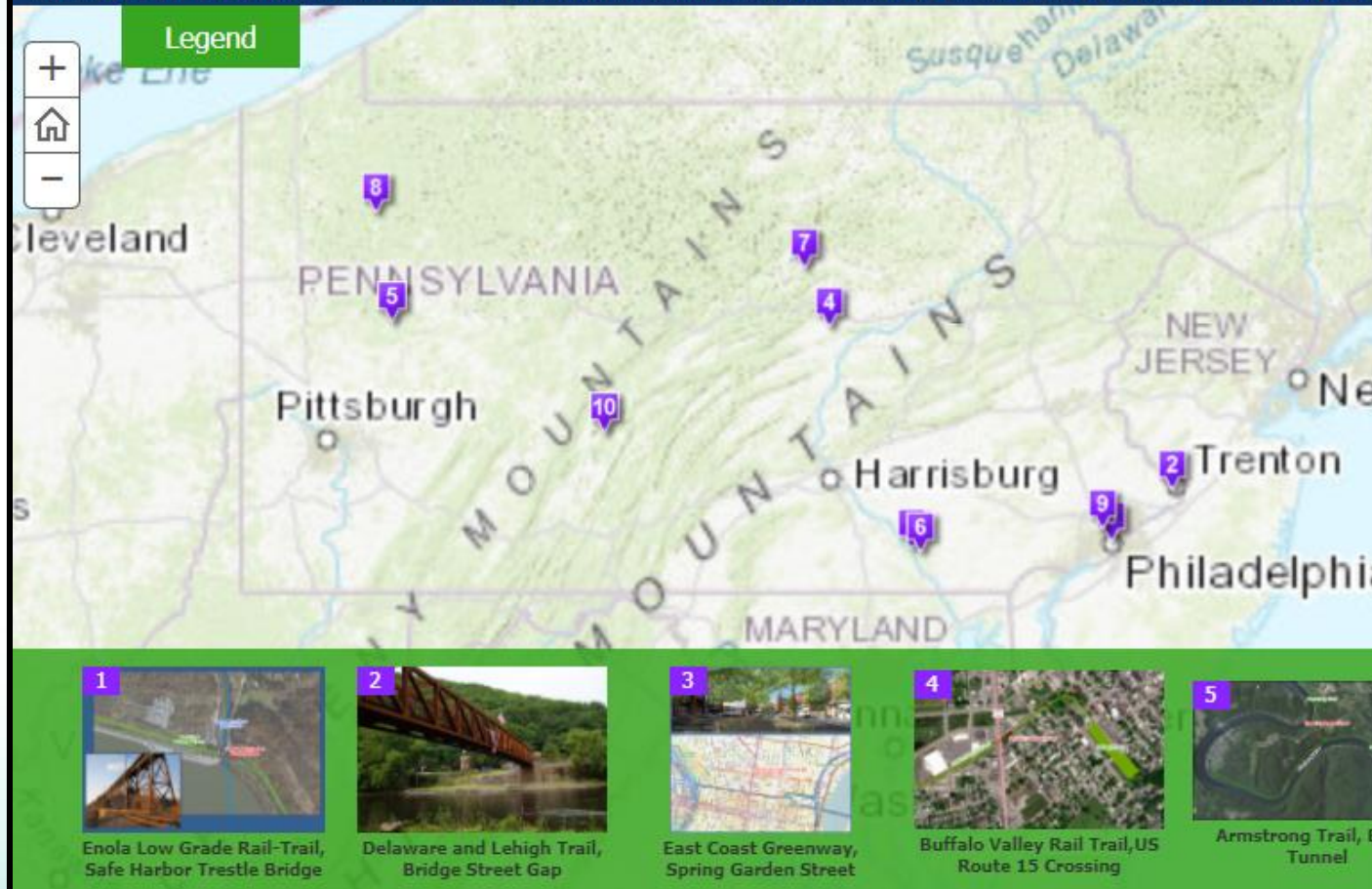




Pennsylvania's Top 10 Trail Gaps

Exploring Pennsylvania's Top Ten Trail Gaps

The intent of the the top ten trail gaps is to establish the top priority trail projects for Pennsylvania and to raise public awareness of gaps. These were selected as the top ten trail gaps out of 38 nominations submitted by trail partners throughout the commonwealth! 2014-2019 Pennsylvania Land and Water Trail Network Strategic Plan, located on the DCNR Trails Advisory Committee's [webpage](#)



Criteria to be elevated to a Top 10 Trail Gap:

- Will connect contiguous open miles of trails
- Require construction or rehabilitation of major infrastructure
- Have a large funding need, generally over \$1,000,000
- Require interagency coordination



Outdoor Recreation Access in Pennsylvania: Pursuing a Goal of Recreation for All

Who in Pennsylvania has access to outdoor recreation within 10 minutes of their home?

More importantly, who doesn't?



2020 PENNSYLVANIA STATEWIDE COM



10-Minute Walk (County)

Maps and stats based on a 10-minute walk to parks, trails, and public open spaces. Summary stats are at the county level.



10-Minute Walk (Muni)

The same analysis as the county 10-minute walk, but with results detailed to individual cities, townships, and boroughs.



10-Minute Drive (Trails)

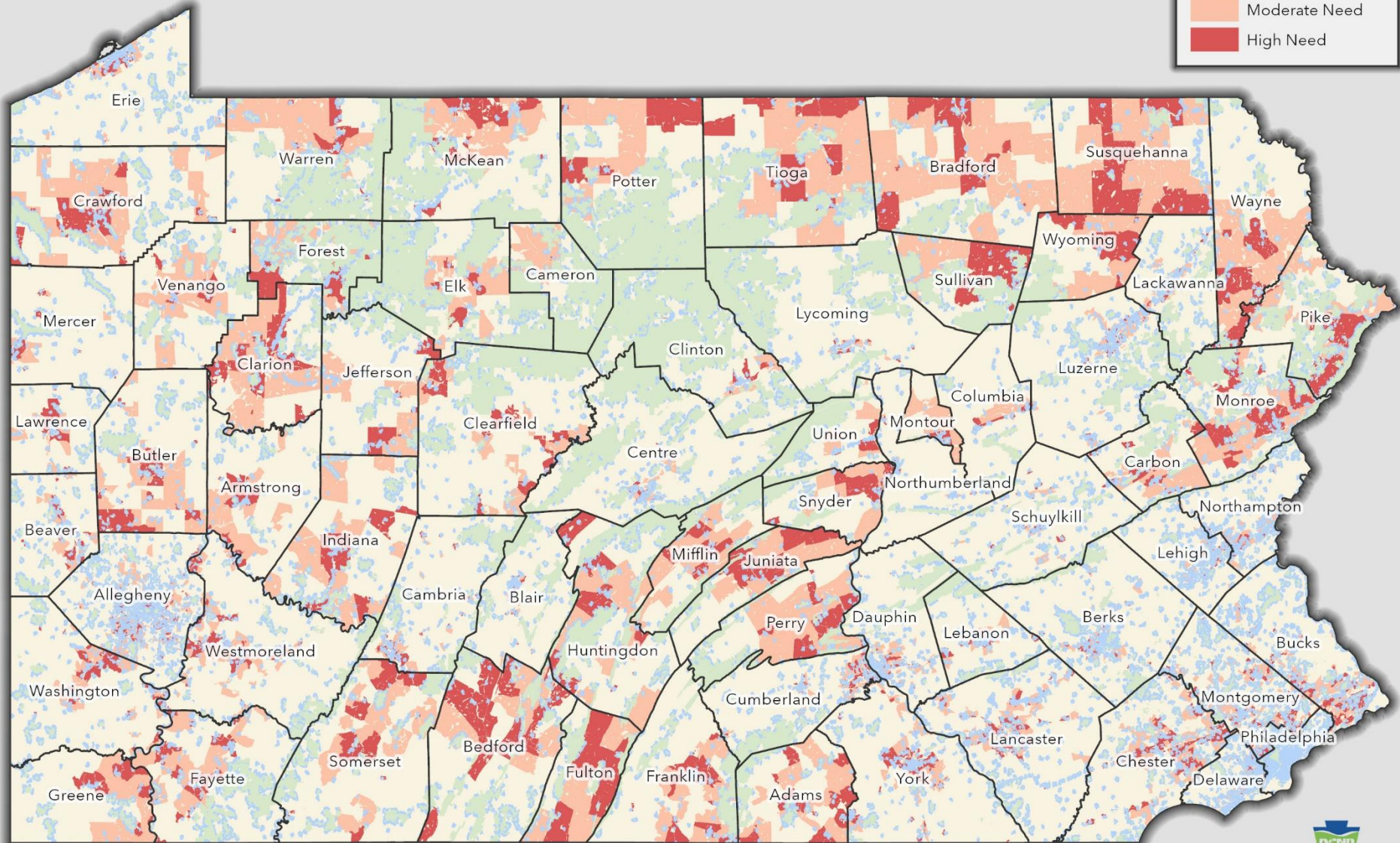
Maps and stats based on a 10-minute drive to trailheads. Summary stats are at the county level.

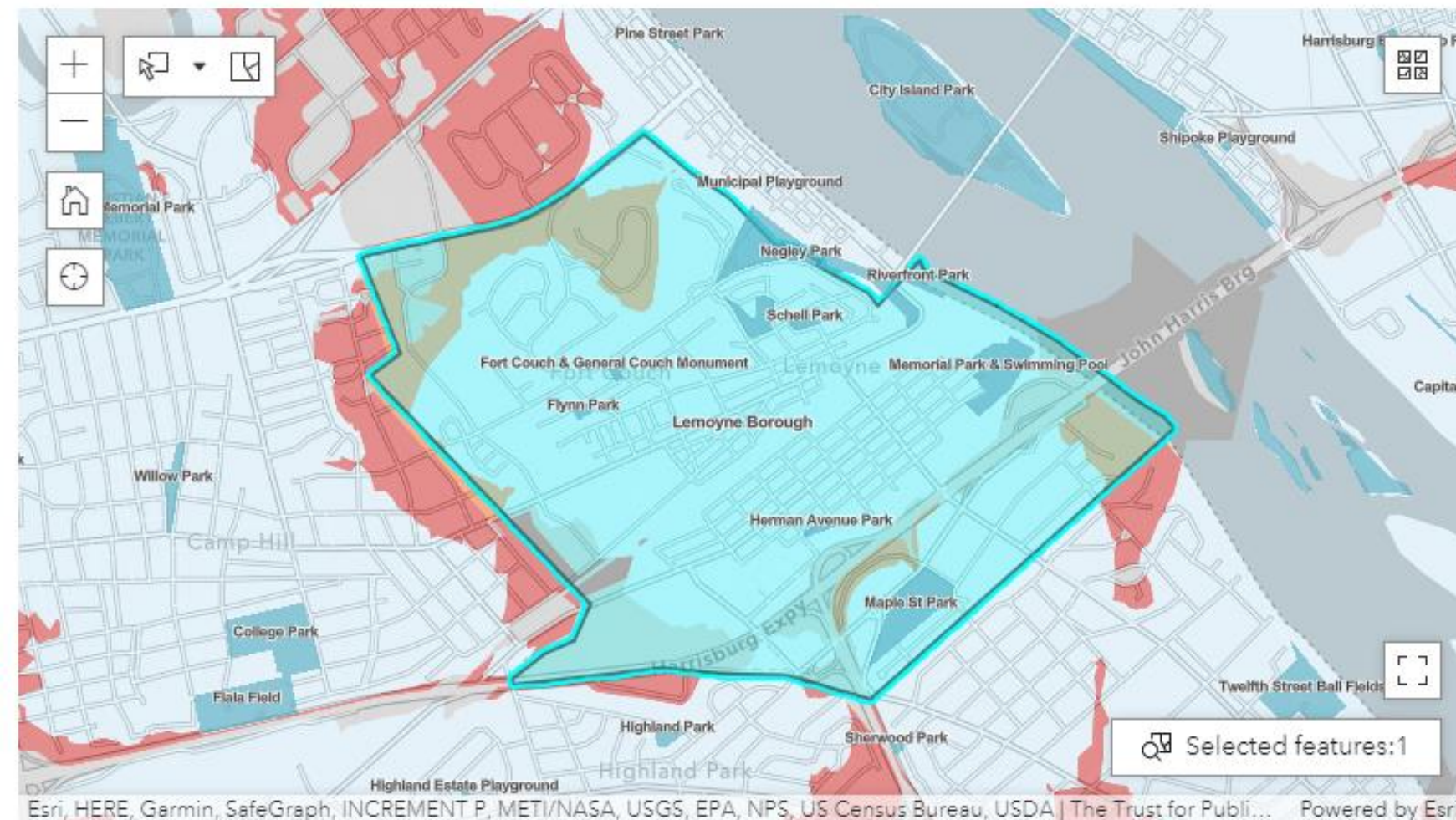


10-Minute Drive (Water)

Maps and stats based on a 10-minute drive to fishing and boating access points. Summary stats are at the county level.

Outdoor Recreation Access and Need in Pennsylvania





10-Minute Walk Municipal Stats: Lemoyne Borough (Cumberland County)

Name	Lemoyne Borough
County	Cumberland
Population Served	4,389
Population Served (%)	90%
Kids Served	894
Kids Served (%)	91%
Adults Served	2,796
Adults Served (%)	91%
Seniors Served	700
Seniors Served (%)	87%
Low-Income Households Served	1,134
Low-Income Households Served (%)	93%
Medium-Income Households Served	383
Medium-Income Households Served (%)	91%

- Open Access Land
- Has Access
- High Need
- Medium Need
- Low Need
- Zero Population
- Military Land



About the Project

10-Minute Walk (County)

10-Minute Walk (Municipal)

10-Minute Drive (Trails)

10-Minute Drive (Water)

Statewide

Population Served:
53%

Kids Served:
54%

Low-Income Served:
60%

Minorities Served:
75%

Lemoyne Borough (Cumberland County)

Population Served:
90.34582132564842%

Kids Served:
91.0386965376782%

Low-Income Served:
93.17995069843879%

Minorities Served:
93.23017408123792%



pennsylvania

DEPARTMENT OF CONSERVATION
AND NATURAL RESOURCES

Alex MacDonald

Recreation & Conservation Manager

Bureau of Recreation and Conservation
Trails, Greenways & Statewide Planning
400 Market Street, 5th Floor RCSOB, P.O. Box 8475
Harrisburg, Pennsylvania 17105-8475

P 717.772.4586 **F** 717.787.9577

almacdona@pa.gov

www.dcnr.pa.us