



## CONFERENCE ANNOUNCEMENT

# APA PA 2024

### *this year!*

- **400** planners expected
- Over **45** classroom sessions
- **6** mobile workshops offered
- Up to **12** CM credits, including Sustainability/Resilience, Equity, Law and Ethics
- **Welcome Reception at Erie Art Museum**
- **Opening Keynote "Livability Reimagined: An Ecological Approach to Placemaking"** with Phil Myrick, Phil Myrick LLC
- **Annual Awards Presentation**
- **State of the APA PA Chapter**
- Monday reception with the **Exhibitors**
- **Tuesday Plenary "Proactive PA: Insights on Planning Related Pending Actions and Legislation"** with Morgan Boyd, Pennsylvania Department of Community and Economic Development, Theodore Martin, Pennsylvania Department of Community and Economic Development, Stacie Reidenbaugh, 10,000 Friends of Pennsylvania
- **Pitkin Lecture "Youth Are Not the Future, But the Now"** with Corrin Wendell, AICP, YEP! Youth Engagement Planning
- Tuesday afternoon Desserts with our **Exhibitors**
- **The largest annual gathering of planners in PA!**



## Erie

*Photo courtesy of [www.visiterie.com](http://www.visiterie.com)*

PA Chapter of the American Planning Association  
**2024 Annual Conference**  
Sunday, October 13 – Tuesday, October 15  
Erie, PA  
#APAPA24



American Planning Association  
**Pennsylvania Chapter**

*Making Great Communities Happen*

## The largest annual gathering of Planners in PA!



We aspire to be **a place** that **appeals to** and **retains people** by **enhancing the character** and **identity** of what makes us special, our communities will **inspire current** and **future generations to call** the **attractive, resilient,** and **welcoming places** in our county **home**.



# Helping to Improve and Transform Great Places

☎ (814) 622-1221 | 🌐 [Altairre.com](http://Altairre.com)

➤ **Engage, Reimagine & Strategize**  
Community, Municipal, Corridor, and  
Neighborhood Planning Services

➤ **Organize for Impact**  
Strategic Governance and Planning for  
Community and Downtown Development  
Corporations and Municipal Authorities

➤ **Invest, Finance, & Close**  
Assemble Complex Capital Stacks and  
Identify Financing Vehicles for  
Redevelopment and Community and  
Economic Development Initiatives

➤ **Implement & Secure**  
Provide Project Administration for  
Grant and Financing Compliance and  
Redevelopment Project Management

# create plans that come to life

What's more exciting than an  
inspirational plan?

**One that takes off running.**

Connect with us to learn about our  
novel approach to the Implementable  
Comprehensive Plan — and how it could  
accelerate progress in your community.

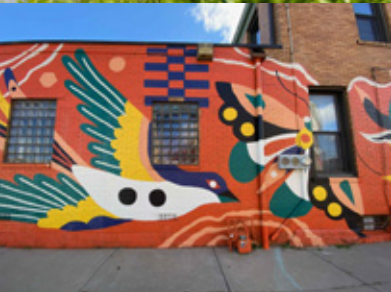
**PASHEK MTR**

Landscape Architecture | Community Planning | Design

We're hiring!

Scan here for  
details on how  
to join our  
growing team.





Photos courtesy of [www.visiterie.com](http://www.visiterie.com)

# YOURGUIDE

Conference @ a Glance	5
Many Thanks	6
Featured Speakers	7
Conference Etiquette	9
Conference Planning Committee	9
Special Events	10
Fundraising	11
General Conference & CM Information	12
Healthy Communities	13
Mobile Workshops	14
Educational Sessions	17
Registration/Pricing	42
Hotel/Reservations	43
Travel Info	43
Conference Greening	44



American Planning Association  
**Pennsylvania Chapter**

*Making Great Communities Happen*

PA Chapter of APA President: **Amy McKinney**

2024 Conference Chairs: **Amy McKinney Zach Norwood** and **Matt Waldinger**

**PA Chapter of APA**  
**PO Box 4680**  
**Harrisburg, PA 17111**  
[info@planningpa.org](mailto:info@planningpa.org)

Register online at  
[planningpa.org](http://planningpa.org)

Conference

# @AGLANCE

## SUNDAY, OCTOBER 13, 2024

1:00 PM – 5:00 PM	Registration
2:00 PM – 3:00 PM	Concurrent Education Sessions A
3:00 PM – 3:30 PM	Break (coffee & tea)
3:30 PM – 4:45 PM	Concurrent Education Sessions B
5:15 PM	Meet at Sheraton lobby for transportation to Welcome Reception
5:30 PM – 7:00 PM	Erie Art Museum
Evening	Dinner on your own

**Questions?** If you have questions about the conference, please contact the Chapter office at [info@planningpa.org](mailto:info@planningpa.org).

## MONDAY, OCTOBER 14, 2024

7:00 AM – 5:00 PM	Registration
7:00 AM – 6:30 PM	Exhibit Hall
7:00 AM – 8:00 AM	Continental Breakfast with Exhibitors
8:15 AM – 8:30 AM	Welcome & Introductions
8:30 AM – 9:30 AM	Opening Keynote with Phil Myrick
9:30 AM – 10:00 AM	Refreshment Break with Exhibitors
10:00 AM – 12:00 PM	Mobile Workshops
10:00 AM – 10:45 AM	Concurrent Education Sessions C
10:45 AM – 11:00 AM	Break/Travel
11:00 AM – 12:00 PM	Concurrent Education Sessions D
12:00 PM – 1:45 PM	Luncheon, State of the Chapter and Annual Awards
1:45 PM – 2:00 PM	Break/Travel
2:00 PM – 4:45 PM	Mobile Workshops
2:00 PM – 3:15 PM	Concurrent Education Sessions E
3:15 PM – 3:45 PM	Refreshment Break with Exhibitors
3:45 PM – 5:15 PM	Concurrent Education Sessions F
5:30 PM – 6:30 PM	Evening Reception with Exhibitors
After 6:30 PM	Dinner on your own
Evening	Networking event hosted by Northwest Section

## TUESDAY, OCTOBER 15, 2024

7:00 AM – 3:30 PM	Registration
7:00 AM – 2:00 PM	Exhibit Hall
7:00 AM – 8:00 AM	Continental Breakfast with Exhibitors
8:15 AM – 8:30 AM	Introductions
8:30 AM – 9:45 AM	Plenary with Morgan Boyd, Theodore Martin, and Stacie Reidenbaugh
9:45 AM – 10:15 AM	Refreshment Break with Exhibitors
10:15 AM – 11:30 AM	Mobile Workshop
10:15 AM – 11:30 AM	Concurrent Education Sessions G
11:30 AM – 1:30 PM	Luncheon & Pitkin Lecture with Corrin Wendell
1:30 PM – 2:00 PM	Dessert with Exhibitors
2:00 PM – 3:00 PM	Concurrent Education Sessions H
3:00 PM	Adjourn

# MANY THANKS

*Many thanks to our Sponsors, Exhibitors and Advertisers* (as of July 25)

## **Diamond**

- Crawford County Planning
- Erie County Planning & Community Development

## **Platinum**

- Altair Consulting Group
- Gannett Fleming
- Pashek + MTR
- Temple University, Tyler School of Art and Architecture

## **Gold**

- AECOM
- Herbert, Rowland & Grubic, Inc.
- Mackin
- OHM Advisors

## **Silver**

- Ben Franklin Technology Partners/CNP
- Church and Murdock Electric
- Delaware Valley Regional Planning Commission
- Hudson Companies
- Michael Baker International
- Northwest Commission
- Southwestern Pennsylvania Commission
- University of Pennsylvania
- Whitman, Requardt & Associates, LLP

## **Exhibitors**

- Altair Consulting Group
- Crawford County Planning
- E. Holdings Inc.
- General Code
- Herbert, Rowland & Grubic, Inc.
- Mackin
- OHM Advisors
- Pashek + MTR
- Social Pinpoint
- Temple University, Tyler School of Art and Architecture

## **Advertisers**

- AECOM
- Altair Consulting Group
- Ben Franklin Technology Partners/CNP
- Church and Murdock Electric
- Crawford County Planning
- Delaware Valley Regional Planning Commission
- Denny Puko, Planning Consultant LLC
- Erie County Planning & Community Development
- Herbert, Rowland & Grubic, Inc.
- Hudson Companies
- LSSE
- Mackin
- Michael Baker International
- Northwest Commission
- OHM Advisors
- Pashek + MTR
- Southwestern Pennsylvania Commission
- University of Pennsylvania
- Whitman, Requardt & Associates, LLP

## **Friends**

- Crawford County Convention and Visitors Bureau
- Vernon Land Use

## **In-Kind**

- Erie Metropolitan Transit Authority

# FEATURED SPEAKERS

**Monday, 8:15a–9:30a**  
**Opening Keynote**



**Livability Reimagined: An Ecological Approach to Placemaking (8:30a – 9:30a)**

**PHIL MYRICK**, Phil Myrick LLC

CM | **1.00**

Planners play a vital role in enhancing the livability of our urban and rural environments. When people love where they live it has enormous impact on local economies, physical and mental well-being, public safety, and social connectedness. This presentation starts with the premise that, like any living creature, people require the right habitat to thrive. We will explore various approaches to creating these enriching habitats, emphasizing an ecological approach to place-making and showcasing examples where planning has led to remarkable transformations.

**Tuesday, 8:15a – 9:45a**



**Proactive PA: Insights on Planning Related Pending Actions and Legislation (8:30a-9:45a)**

**MORGAN BOYD**, Pennsylvania Department of Community and Economic Development

**THEODORE MARTIN**, Pennsylvania Department of Community and Economic Development

**STACIE REIDENBAUGH**, 10,000 Friends of Pennsylvania

CM | **1.25**

As communities across the Commonwealth work to address their changing demographics and physical places, policy shifts in Harrisburg are bubbling to the surface. For the first time in almost two decades community planning, economic development, and housing are not only up for discussion on the floor of the general assembly, but are a priority in the Governor's administration. Our panelists join us today to share their insights on the conversations, administrative actions, and pending legislation that would impact planners, developers, and our communities.



Register online at  
[planningpa.org](https://planningpa.org)

**Tuesday, 11:45a – 1:30p**  
**Luncheon & Pitkin Lecture**



**Youth Are Not the Future, But the Now (12:30p – 1:30p)**

**CORRIN WENDELL, AICP, YEP! Youth Engagement Planning**  
CM | 1.00

Young people have incredible excitement, eternal optimism, and a contagious spirit! They are naturally inquisitive, inclusive, helpful to others, imaginative, and full of wonder. YEP! believes that youth have the power to positively shape the future of all of our communities and this keynote will showcase how we have made it our mission to encourage young people to learn, create, and participate in activating change in the world.

YEP! creates opportunities for youth to meaningfully advocate for change in their own communities and built environments while simultaneously teaching planners about youth engagement. Youth are rarely considered as part of the planning processes, and planners are even more rarely trained in youth engagement. Yet, youth represent a sizable demographic within any community and youth engagement is critical to an equitable planning process. Doing the hard work of incorporating diverse youth voices into planning processes yields manifold benefits when it comes to building more equitable community engagement processes - and, additionally, recruiting a more diverse cohort of future planners. Empowering youth can begin bridging the engagement gap with historically marginalized communities.

Corrin will share YEP! experiences from engaging with over 7,000 youth nationally, including: Bringing diverse perspectives into all planning processes by engaging diverse youth populations; creating opportunities for youth to participate in advocacy and engagement; developing customized tools to involve youth in the local planning, including modifying resources for different age groups; effectively using youth input to craft plans; and messaging why investing in youth engagement is an essential part of the planning process. Corrin will showcase diverse perspectives that encourage planners to lead successful youth engagement efforts in their own communities!

**Questions?** If you have  
questions about the conference,  
please contact the Chapter office  
at [info@planningpa.org](mailto:info@planningpa.org).

# CONFERENCE ETIQUETTE

The dress code for the conference is **business casual** attire.

Cell phones and other devices that make noise should be disabled during sessions. If you must take a call, please exit the session as quietly as possible and take the call in the corridor.

**Room temperatures** are difficult to regulate. It is advisable to dress in layers so you can add or remove a layer for your personal comfort.

The conference is a **no-smoking** event. Smoking is not permitted in any conference event, including mobile workshops.

Please be considerate of other conference participants who may have allergies or sensitivities to **fragrances**. If your fragrance is strong, please consider using less of it, or not using it during the day.

APA PA is **not responsible for the materials or opinions of the speakers you will hear**.

---

Conference

## PLANNING COMMITTEE(\*CO-CHAIR)

Emerson Bannon, *Erie County Department of Planning and Community Development*

Nancy Blimmel, *Erie County Department of Planning and Community Development*

Hilary Buchanan, *Venango County*

Tony Cunningham, *Erie County Department of Planning and Community Development*

Joy Fronzoli, *PA Department of Community & Economic Development*

Abby Heidt, *Erie County Department of Planning and Community Development*

Jessica Hilburn, *Crawford County Planning Commission*

Jessica Horan, *Erie County Department of Planning and Community Development*

Audrey Knight, *Erie County Department of Planning and Community Development*

Michael Lyon, *Warren County*

John McGranor, *PA Department of Community & Economic Development*

**Amy McKinney\***, *Lawrence County Department of Planning and Community Development*

Amy Murdock, *Altair Real Estate Services*

**Zach Norwood\***, *Crawford County Planning Commission*

Denny Puko, *Denny Puko, Planning Consultant LLC*

Jackie Spry, *City of Erie*

Kristina Thomas, *City of Hermitage Planning and Development*

**Matthew Waldinger\***, *Millcreek Township Planning and Development*

Katie Wickert, *PA Department of Community & Economic Development*



Register online at  
[planningpa.org](https://planningpa.org)



# SPECIAL EVENTS

**Sunday, 5:30p – 7:00p**

## Welcome Reception: Erie Art Museum

At 5:15p, meet in the lobby of the Sheraton Erie Bayfront Hotel to get transported to the Erie Art Museum (20 E 5th, Erie PA 16507). The Museum houses a collection of over 8,000 objects—a mix of local and regional art, plus work by some of the biggest names in art history. The Erie Art Museum holds a LEED Gold certification and expresses its commitment to future generations through policies that assure and promote environmental sustainability. The Erie Art Museum is a proud partner to Erie Arts & Culture, a grantee of the Pennsylvania Council on the Arts and an Erie County Lead Asset as designated by the Erie County Gaming Revenue Authority. This reception includes heavy hors d'oeuvres and refreshments.

**Monday, 12:00a – 1:45p**

## Luncheon, State of the Chapter and Annual Awards Presentation

Join us as we celebrate the achievements of fellow Pennsylvanians who shape where we live, work and play! Join **Craig Peiffer**, Chair of the PA Chapter of APA Awards Committee, for an inspiring **Annual Awards** program. We will recognize the work of fellow planners, planning officials, and elected officials and their roles in planning Pennsylvania. PA Chapter of APA President, **Leah Eppinger** will present the **State of the Chapter** highlighting the Chapter's successes and key activities during 2024.

**Monday, 5:30p – 6:30p**

## Evening Reception with Exhibitors

Monday's conference activities wrap-up with a reception with our Exhibitors. Take advantage of this opportunity to network with the Exhibitors and the other conference attendees. It's a great place to make plans to venture out and discover Erie!

**Monday, 6:30p**

## Planners Social

Meet at Sheraton lobby at 6:30. There will be a bus that will run continuously until 8:00 PM. Planners Social will be at Brewerrie at Union Station (123 W 14th Street). Every good planner has a team of colleagues to lean on. This social aims to connect planning professionals from all over the state for an evening of drinks, snacks and good conversations. This social is sponsored by Northwest Section and Michael Baker International. *(Additional food and beverage will be available for purchase)*

Register online at  
[planningpa.org](https://planningpa.org)

# SCHOLARSHIP FUND

Support the next generation of Planners!  
Give to the PA Chapter of APA Scholarship Fund!

...and in other Scholarship Fundraising Committee news, we will also be selling tickets for the yearly **basket raffle**, and again this year we will be coordinating a **50/50 raffle**!

*Your contribution to the PA Chapter of APA Scholarship Raffle will help current planning students with their education-related expenses. Both undergraduate and graduate planning students are finding it hard to make ends meet. Students must not only juggle their academic pursuits, but also pay their bills, which is more difficult with fewer student loan options and higher textbook prices.*

## HOW TO HELP:

- **Make a tax-deductible contribution.** Simply indicate your financial gift when you register for the Conference and include it with your payment. We'll mail a thank you letter for your tax records.
- **Purchase raffle tickets** at the Conference. Help make it fun again this year while raising funds to support young planners. Generous donors contribute a variety of great prizes, from weekend getaways to gourmet food baskets to Pennsylvania-themed gear. Tickets will be on sale throughout the Conference.
- **Participate in the 50/50 raffle!**
- Donate items for the raffle—big or small! Donate a **basket** from your county or region. Reach out to your local attractions for **tickets**. Donate a **book**! Donate a **painting or print**! Are you lucky enough to have a **vacation condo or cabin** you can donate for a week or weekend? Please contact the PA Chapter Office with the details of your giveaway at [info@planningpa.org](mailto:info@planningpa.org).



# GENERAL INFO

## About the Main Speakers, Sessions and Certification Maintenance Credits

**Application will be submitted to APA for approval of Certification Maintenance (CM) credits** for all of the main speakers and most of the educational sessions at this year's conference. A total of 12 CM credits may be earned depending on session selections. Mobile workshops will have CM credit. And Sustainability/Resilience, Equity, Law and Ethics CM credits are offered.

**The list of approved sessions will be posted** on the PA Chapter website, [www.planningpa.org](http://www.planningpa.org), after approval is received from APA.

**Any session may be cancelled or rescheduled** because of low registration or unforeseen circumstances. Changes and cancellations will be noted in the Final Program which is distributed at the conference as well as on the Chapter website prior to the conference.

Following the conference, materials will also be available on the PA Chapter of APA website in electronic format.

**The PA Chapter of APA is not responsible** for the materials or opinions of the speakers you will hear.



Designing Solutions that  
Strengthen Communities

Engineering | Planning | Infrastructure Solutions

[www.hrg-inc.com](http://www.hrg-inc.com)



Providing Consulting Services for over 60 years



MAKE TODAY MATTER

Pittsburgh, PA: 412.788.0472 | Camp Hill, PA: 717.774.8900 | Follansbee, WV: 304.394.3040

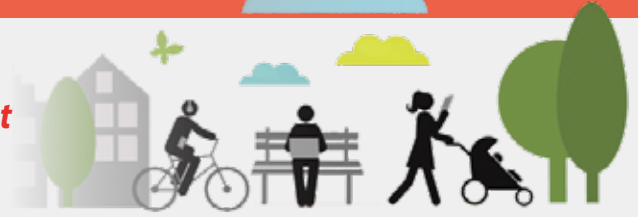


[www.mackinengineering.com](http://www.mackinengineering.com)



# HEALTHY COMMUNITIES

*Please join us for all three days of the conference or just Monday. Monday, October 14 has a spotlight on Healthy Communities.*



The day includes:

- **Exciting sessions** centered around this emerging topic.
- **Discounted rate** available for health professionals and advocates.
- **Networking** session to meet colleagues from around Pennsylvania.
- **Expanded resources** available on the [Healthy Communities in PA](https://planningpa.org) website after the conference.

## Healthy Communities Sessions

- C3.** Outdoor Recreation & Pennsylvania Economic Development
- C5.** Assessing the Economic Impact of Trails on Commercial Districts
- F4.** Active Transportation Safety on Local Rural Roads
- F6.** How to Activate the Outdoor Economy to Drive Business & Enhance Quality of Life

## About the Healthy Communities in PA Task Force

The Healthy Communities in PA task force envisions communities in all parts of Pennsylvania being built in a way that makes the healthy choice the easy choice for every resident. The Healthy Communities in PA task force achieves its vision through volunteer efforts by planning and health advocates creating tools and resources to assist partners in promoting healthy community design. The tools and resources are created by working groups of task force topic experts collecting best practices needed by Pennsylvania's healthy community design partners and to create new partners. The American Planning Association, Pennsylvania Chapter is committed to sharing these resources and facilitating discussion around healthy community design in Pennsylvania.

**Questions?** If you have questions about the conference, please contact the Chapter office at [info@planningpa.org](mailto:info@planningpa.org).



# MOBILEWORKSHOPS

All mobile workshops require an extra fee to cover transportation and other logistics. **These workshops will be cancelled if sufficient participation is not reached.** Please wear comfortable clothing and shoes suitable for walking.

**Monday, 10:00a – 12:00p**

## M1. Connecting Town and Gown: Leveraging Higher Education in Comprehensive Planning

CM | **1.75** *Additional \$20 fee required*

The Harborcreek Township Comprehensive Plan leverages the growth at Penn State Behrend and calls for stronger physical connections between the campus and the Township's Buffalo Road Town Square District. Knowledge Park at Behrend was designed and continues to grow as a place to bring forward-thinking companies together with faculty, staff, and students of Penn State for business and technology advancement. Most recently the Park announced the attraction of Kyocera AVX, which will add a 50,000-square-foot headquarters and manufacturing facility. The building is expected to be complete and in use by the end of 2024. The park houses 20 companies across growing sectors, employing 500+ people. The Park continues to expand and is currently in the planning and design phase of the Center for Manufacturing Competitiveness which will host the first full-service integrated heavy-haul battery testing facility in the nation.

**Amy Murdock, AICP**, Altair Consulting Group

**Chuck Peters**, Altair Real Estate Services

**Brandi Rosselli, AICP**, Mackin

**Monday, 10:00a – 12:00p**

## M2. Downtown Erie: Making a Comeback

CM | **1.75** *Additional \$20 fee required*

This mobile workshop will include a tour of the properties within the footprint of the Erie Downtown Development Corporation which has developed more than \$100 million worth of properties in downtown Erie since 2017. The tour will provide an inside look at the EDDC's portfolio --- exploring successes, reflections, and opportunities ahead for revitalization of Downtown Erie. The tour will also provide a sampling of nourishment and libations from businesses within the EDDC footprint. Inspired, in part, by the 2016 Comprehensive Plan, visionary business, philanthropic and community leaders formed the EDDC in 2017, to transform the city of Erie's downtown core and spark revitalization across the region. The organization is in the process of completing 12 different projects to renovate, build and develop 478,000 square foot of space in downtown Erie. There are plans for a new \$15 million building in the space in between that was previously home to the Greyhound bus terminal building. That new building which will be called Flagship Commons is expected to provide a combination of retail space, open areas and 40,000 square-foot of office space on the second and third floors that were originally planned to be apartments. The EDDC looks to expand its mission to beyond real estate to be an economic development arm for the city and provide support for entrepreneurs, vendors, and other developers.

**Corey Cook**, Erie Downtown Development Corporation

**Drew Whiting, Esq.**, Erie Downtown Development Corporation



# MOBILEWORKSHOPS

**Monday, 2:00p – 3:15p**

## M3. Tides of Change: Mobilizing the International Coastal Cleanup in Your Watershed

CM | **1.25** *Additional \$10 fee required*

Since 1972, the International Coastal Cleanup (ICC) has been mobilizing people worldwide to remove trash from beaches and waterways, becoming a beacon of hope and inspiring global action to protect our watersheds. With the support of over 17 million volunteers globally, the ICC has successfully collected more than 350 million pounds of trash, demonstrating the power of collective effort. Erie County has proudly participated in this global initiative, engaging the community to remove thousands of pounds of debris from local waterways and coastlines. Just last year, Erie County diverted over 5,000 pounds of waste from contaminating our watershed. In this session, we will highlight the remarkable achievements of the ICC and Erie County's contributions. Attendees will also have the opportunity to make a tangible impact by dedicating 25 minutes to collect trash around the premises of the Bayfront Convention Center, replicating a mini ICC clean-up. Join us to learn, engage, and take action for a cleaner and healthier community. (This mobile tour requires individuals to wear closed toed shoes and comfortable clothing attire)

**Audrey Knight**, Erie County Department of Planning and Community Development

**Monday, 2:00p – 4:45p**

## M4. Successfully Deploying Gaming Revenue Through the Impact Investment Model

CM | **2.50** *Additional \$25 fee required*

Since its inception 15 years ago, the Erie County Gaming Revenue Authority (ECGRA) has programmed over \$58,000,000 in economic development grants and loans in Erie County using a nationally recognized impact investment model. ECGRA staff will deliver an overview of its programs and how they touch a significant number of problem areas Pennsylvania planners and municipal officials face. Key areas successfully addressed by ECGRA's grant programs are residential and main street blight, rural planning and development, entrepreneur support, underserved communities, arts and culture funding, outdoor recreation and parks funding, historic preservation, municipal efficiency, multi-municipal collaboration, small business financing, and university collaboration.

**Tom Maggio, AICP**, Erie County Gaming Revenue Authority  
**Perry Wood, PhD**, Erie County Gaming Revenue Authority

Register online at  
[planningpa.org](https://planningpa.org)



# MOBILEWORKSHOPS

**Monday, 2:00p – 4:45p**

## M5. Help Us Create Safer Streets in Erie

CM | **2.50** *Additional \$25 fee required*

Erie has a transportation safety crisis. Over the last five years, 34 travelers died on Erie's streets, and another 157 had their lives turned upside down due to serious injuries from traffic crashes. To address these concerns, the City of Erie applied for and received a USDOT Safe Streets and Roads for All (SS4A) grant to develop a Comprehensive Safety Action Plan. This spring and summer, the City will convene a multi-agency Safety Working Group and involve the public in analyzing traffic crashes in Erie and determining the factors that have led to these crashes. The purpose of this mobile workshop will be to directly involve conference attendees in developing solutions for traffic violence in Erie. Participants will travel to a location in the City - either a major intersection or a corridor - that has experienced a high frequency of severe crashes. While in the field, they will learn about crash history at that location, community input received to date, and potential safety countermeasures to address traffic safety concerns. They will then have the opportunity to offer suggestions on how those countermeasures could be applied in the community. This session will be highly interactive and will directly engage participants in the transportation safety planning process within the community context.

**Jeff Riegner, AICP, PE, PTOE, RSP1**, Kittelson & Associates, Inc.  
**Jacqueline Spry**, City of Erie

**Tuesday, 10:15a – 11:30a**

## M6. Planning for Bluff Recession Strategies Against Climate Change Issues

CM | **1.25** *Additional \$15 fee required*

The session will travel to several monitoring sites on the coast of Lake Erie where bluff erosion is highly prevalent and where mediating initiatives have been implemented. The site will also explore coastal zone grant projects that have been implemented and the process of these grant projects from a planning perspective. A large part of these projects is the required planning to work with the constantly changing landscape of the bluffs. This session will explore the impacts of climate change on the lake front landscape and the strategies required to provide resilience against climate change impacts. Discussion of the use of natural resources to help mitigate against both toe erosion and groundwater seepage of the bluff that can be applied to any watershed facing impairment or erosion.

**Robert Banks**, Erie County Department of Planning  
**Shelby Clark**, PA Department of Environmental Protection





# EDSESSIONSAGENDA

**Sunday, October 13, 2024**

**1:00p – 5:00p      Registration Open**

**1:00p – 3:00p      Legislative Committee Meeting**

**2:00p–3:00p      Concurrent Education Sessions A (1.00 CM)**

## **A1. Climate Change Adaptation Planning in the Great Lakes**

CM | **1.00 Sustainability/Resilience**

The International Joint Commission (IJC) Water Quality Board (WQB) initiated the Climate Change Adaptation in the Great Lakes project to develop a robust community of practice and provide access to dynamic planning tools designed for local and regional governments to support climate resilience in Great Lakes communities. This project highlights issues primarily through the lens of small to medium-sized communities. There are many municipalities in the region that could benefit from an effort to share tools, networks, and guidance. These communities are faced with a complex situation to analyze, with limited resources for technical assistance, and could use help evaluating factors relating to key decisions about infrastructure investments to counteract and lessen climate change impacts. Accordingly, the WQB believes that this project could provide a great service in addressing and improving these circumstances. The primary output from this project will consist of climate change adaptation guidance for small to medium-sized communities in the Great Lakes. The guidance includes an overview of the purpose of the guide and toolkit; tips on how to get the most out of the resource; general steps to prepare for climate resilience; tools and case studies showing how other Great Lakes communities are preparing for resilience; guidance on and links to appropriate technical support and resources; educational resources that communities can use to help garner community and political support; and information on available funding for resilience and adaptation planning. Potomac-Hudson Engineering, Inc. has been retained as the contractor to support this effort, with Michael Baker International and LimnoTech as teaming partners. The project is scheduled to continue through the fall of 2024. It is anticipated that the guide and toolkit may be released around the time of this APA-PA conference; the presentation will include information on the current status of the guide.

**Dawn Schilling PE, AICP**, Potomac-Hudson Engineering

## **A2. BUILDing Capacity for Erie Neighborhood Revitalization**

CM | **1.00 Equity**

The BUILD Community Development Corporation is filling a critical gap in Erie's toolkit to deliver equitable neighborhood revitalization strategies at scale. Leaders of BUILD CDC are leveraging their mission alignment with the Hamot Health Foundation and their position as a trusted partner in the Wayne neighborhood to provide safe and affordable homes and much needed development capacity for neighborhood revitalization in the Erie community.

**Daria Devlin**, Hamot Health Foundation

**Tom Hardy, AICP**, Altair Consulting Group

**Wyatt Schroeder**, Bowling Business Strategies



# EDSESSIONSAGENDA

## Sunday, October 13, 2024, *continued*

### **A3. Implementing On-demand Microtransit in Rural Communities**

CM | 1.00

CATA will review the transition planning and implementation for “CATA Go” the on-demand microtransit service in the City of Titusville. Prior to July 2023, CATA operated fixed route services that covered less than half of the City of Titusville along with demand response reservation-based shared ride. Services in Titusville averaged 52 trips per day. With the transition to on-demand CATA Go, services now routinely average 98-105 trips per day with coverage throughout all of Titusville. CATA has been able to reinstate evening and Saturday service that was discontinued prior to the Pandemic.

**Tim Geibel**, Crawford Area Transportation Authority

### **A4. Closing the Digital Divide: Broadband Expansion**

CM | 1.00

In this session we will share the strategies Erie County has utilized to expand broadband to the un- and underserved homes and business as a means to facilitate discussion about what is working or not working other communities. We will share our broadband expansion feasibility study as well as the process we took to engage internet service providers interested in building out in the Erie region. Via this roundtable discussion we will work to identify best practices to maximize the available funding for broadband.

**Jessica Horan**, Erie County Department of Planning and Community Development

**Michelle Jaggi**, Erie Area Council of Governments

**Tom McKinley**, Looped Solutions

### **A5. Building Together: Constructing Futures with Erie County’s Whole Home Repair Workforce Development**

CM | 1.00

Join us for an insightful session delving into Erie County’s approach to community development through the utilization of DCED Whole Home Repair’s Workforce Development project funds. In this presentation, we will explore the collaborative efforts between the Department of Planning and Erie County Community College to establish a new Construction Trades program. Representatives from Erie County Community College will be our guides through this transformative journey. Drawing from their experience and expertise, and also provide an overview of the inception, implementation, and achievements of the Construction Trades program that launched in 2024. Attendees can gain valuable insights to: learning about the strategic planning and coordination involved in creating a Construction Trades curriculum to address community’s needs, discover the tangible outcomes and successes achieved through the program, including the empowerment of trainees with essential construction skills and the fostering of partnerships with local contractors, and gain foresight into the future direction of the Construction Trades program and how it aims to further enhance workforce development, promote economic growth, and cultivate a thriving community. This presentation offers a unique opportunity to explore a model of community-driven workforce development that not only addresses housing needs but also empowers individuals to build fulfilling careers in the construction industry. Whether you are a policymaker, educator, community leader, or industry professional, this session promises to inspire and inform your approach to community development and workforce training.

**Ken Getschow III**, Erie County Community College of PA

**Guy Goodman**, Erie County Community College of PA

**Abby Heidt**, Erie County Department of Planning and Community Development



# EDSESSIONSAGENDA

**Sunday, October 13, 2024, *continued***

**3:15p – 5:00p      PMPEI Meeting**

**3:30p–4:45p      Concurrent Education Sessions B (1.25 CM)**

**B1. Ethics Jeopardy**

CM | 1.25 (1.00 Ethics)

How well do you know the AICP Code of Ethics? Find out by testing your knowledge of the AICP Code of Ethics against your colleagues in an interactive game of Ethics Jeopardy! Participants will respond to a series of questions on the AICP Code of Ethics to demonstrate their understanding of how the AICP Code applies to circumstances and trends in the practice of planning. Key points on the AICP Code of Ethics will be expounded upon to help explain answers to key questions. Join in with your colleagues and test your knowledge to see if you have what it takes to become an AICP Code of Ethics champion.

**Scott Duncanson, AICP, ENV SP, LEED Green Associate**, Gannett Fleming, Inc.

**Alexis Williams, AICP, PP**, STV, Inc.

**B2. A House Undivided: Bringing Stakeholders from the Public and Private Sector Together for Data-Informed Housing Solutions**

CM | 1.25

The intensity of the housing crisis is growing. Land for residential construction is increasingly scarce, home prices are rising, and the public call for action is getting louder. This creates a unique opportunity to advance bold solutions, but leveraging this opportunity can feel daunting and politically untenable. Learn how the York County Economic Alliance is working with a broad coalition of stakeholders – from housing advocates to market-rate developers – to advance priority housing issues in a collaborative and data-driven way. Their “Housing Action Agenda” includes whole-market solutions, from investing in workforce development programs and a permanent day shelter to encouraging employer-led housing solutions and direct outreach to municipalities. Presenters will foster a dialogue with the audience through open-ended questions and interactive polling.

**Silas Chamberlin, PhD**, York County Economic Alliance

**Tim Staub, AICP**, Herbert, Rowland & Grubic, Inc.

**B3. Innovative Funding Strategies for Critical Infrastructure Maintenance in Erie County**

CM | 1.25

The conference presentation will focus on Erie County’s innovative approach to addressing critical transportation infrastructure needs despite not owning the infrastructure itself. Through strategic allocation of available funds, including the Local Use Fee program, Act 13 Marcellus Legacy Fund, and County Liquid Fuels, Erie County has been able to assist its 38 municipalities in maintaining their transportation assets. With a focus on critical bridge infrastructure, Erie County, Erie Metropolitan Planning Organization and PennDOT District 1 collaborate to prioritize and program funding. By leveraging funding sources and implementing strategic partnerships, Erie County demonstrates an effective model for addressing critical infrastructure needs despite fiscal constraints.

**Emily Aloiz**, Erie County Department of Planning and Community Development

**Audrey Knight**, Erie County Department of Planning and Community Development



# EDSESSIONSAGENDA

## Sunday, October 13, 2024, *continued*

### **B4. Supporting Communities: Bridging the Gap between Underserved Communities and Transportation Improvements**

CM | 1.25

In FY24, DVRPC launched a new program, Supporting Communities, which addresses a critical need by bridging the gap between community priorities and transportation funding opportunities, including support for both planning and implementation. DVRPC is responsible for developing the program of priority projects for federal transportation funding across the nine-county Philadelphia region. However, before a project can receive funding, it must be studied and recognized as a local priority. Many projects require significant resources for study and advancement, which often leaves under-resourced communities unable to compete for federal or state funding support. This perpetuates a cycle of disinvestment. Supporting Communities seeks to assist communities from initial outreach to project implementation. In this session, a panel of planners and public engagement experts involved in the Supporting Communities program will provide a comprehensive overview of the program, discuss how to use new federal Justice40 datasets to identify priority communities, highlight work from the program's inaugural year, and detail lessons learned for future iterations of the program. This session will provide planners with actionable ways to address similar challenges in their own work.

**Shoshana Akins**, Delaware Valley Regional Planning Commission

**Alyson Dressman**, Delaware Valley Regional Planning Commission

**Stephanie Fuentes**, Connect the Dots

**Kendra Nelson**, Delaware Valley Regional Planning Commission

### **B5. Infinite Erie: A Model for Collective Impact**

CM | 1.25 (1.00 Equity)

Infinite Erie is an emerging collective impact model with the purpose of positioning Erie to compete with like-size regions to attract and secure public and private sector funding through the coordination of inclusive growth strategies to deliver transformative change. The initiative was catalyzed by the Inclusive Playbook authored by Bruce Katz and Florian Schalliol of New Localism Associates and steered by the Erie Action team, a cross-section of public, private, and institutional leadership in the Erie community. The session will explore the lessons learned during the creation of Infinite Erie framework for collective goals and strategies to engage private and philanthropic leaders as supporters and investors.

**Amy Murdock, AICP**, Altair Consulting Group

**Kim Thomas**, Infinite Erie

**Mary Tredway**, Infinite Erie

**5:30p – 7:00p**

### **Welcome Reception at Erie Art Museum**

At 5:15p, meet in the lobby of the Sheraton Erie Bayfront Hotel for transportation to the Erie Art Museum. This reception includes heavy hors d'oeuvres and refreshments. It wouldn't be an APA PA Chapter event without time for networking and camaraderie.

**Evening**

**Dinner on your own**



# EDSESSIONSAGENDA

## Monday, October 14, 2024

**7:00a – 5:00p Registration Open**

**7:00a – 6:30p Exhibit Hall Open**

**7:00a – 8:15p Continental Breakfast with Exhibitors**

**8:15a – 9:30a Welcome & Introductions**

**Opening Keynote**

**Livability Reimagined: An Ecological Approach to Placemaking**

CM | 1.00

Planners play a vital role in enhancing the livability of our urban and rural environments. When people love where they live it has enormous impact on local economies, physical and mental well-being, public safety, and social connectedness. This presentation starts with the premise that, like any living creature, people require the right habitat to thrive. We will explore various approaches to creating these enriching habitats, emphasizing an ecological approach to placemaking and showcasing examples where planning has led to remarkable transformations.

**Phil Myrick**, Phil Myrick LLC

**9:30a – 10:00a Refreshment Break with Exhibitors**

**10:00a – 12:00p Mobile Workshops**

**M1. Connecting Town and Gown: Leveraging Higher Education in Comprehensive Planning**

**M2. Downtown Erie: Making a Comeback**




**Serving Pennsylvania Communities.**

- Air Quality Monitoring
- Architecture
- Aviation
- Broadband
- Emergency Management
- Environmental
- Geospatial (GIS)
- Municipal & Civil
- Planning & Urban Design
- Public Engagement
- Rail & Transit
- Stormwater Management
- Traffic Engineering & Design
- Transportation Planning & Engineering

**MBAKERINTL.COM**

**Plan. Collaborate. Grow.**

Our organization is steadfastly committed to keeping our region connected and moving forward. We work with local, state and federal partners to plan for the continued growth of Southwestern Pennsylvania.

Connect with us at:  
[comments@spcregion.org](mailto:comments@spcregion.org)  
 42 21st Street, Suite 101 | Pittsburgh, PA 15222  
 P: (412) 391-5590

**WWW.SPCREGION.ORG**






**@SPCREGION**






# EDSESSIONSAGENDA

**Monday, October 14, 2024, *continued***

**10:00a – 10:45a      Concurrent Education Sessions C (0.75 CM)**

**C1. Is Your Community Online: Why Digital Equity Matters in Planning**

CM | **0.75 Equity**

Broadband and digital equity received unprecedented attention and funding through the 2021 Bipartisan Infrastructure Law, but it's a vast topic that many in planning and local government are still trying to navigate. This session will begin with some level setting and give the audience a primer about the key terms involved and the status of the state's planning efforts, and then dive in more detail into the topic of digital equity and how it can be more integrated into how we conduct planning processes. The presenters will describe how the Pennsylvania Digital Equity Plan worked with residents across historically un- or under-connected demographic populations to hear their challenges related to using and benefitting from digital communications and tools. We'll share lessons learned about how vulnerable populations prefer to be contacted and where they expressed struggles and challenges. The challenges keeping people under-connected digitally are often keeping those same people under-represented in our cities' and towns' built environment through unequal access to information, opportunity, and comfort. The discussion will make clear ties between how/why some populations have less access and ability to use digital platforms and services, and how this barrier continues to impact their ability to engage with other forms of civic and social interaction. As planners, it's imperative we understand how digital inequity places the communities we serve at wildly different starting points; we must understand these barriers in order to plan appropriately for inclusive outcomes. This session will share tested practices and techniques used in Pennsylvania to meaningfully engage with the under-connected and design public-serving programs or projects to be more inclusive.

**Julia Brinjac, PMP**, Pennsylvania Broadband Development Authority  
**Kirsten Compitello, AICP**, Michael Baker International

**C2. Data-Driven Engagement: Creating & Using Problem Statements to Increase Project Applications**

CM | **0.75**

This session will promote opportunities to establish community asset datasets from the outset of a Hazard Mitigation Plan Update process; through data resource identification for attendees. This session will provide examples, options and instruction to Hazard Mitigation Plan Developers (planning process facilitators) for the creation of simplified community interactions during local risk assessment development. A dialogue between the presenter and attendees on existing practices and pitfalls should be expected. This session will also provide suggestions to plan facilitators to establish and clarify expectations for community's roles and responsibilities during the risk assessment process. It will dive into how data should be presented to communities, and improved engagement elicited through data exchanges. Attendees should expect to provide feedback on these suggestions. Planning Process engagement considerations will also be provided to attendees to discuss different approaches. This session intends to generate an understanding of how these planning process improvements can lead to simplification of documenting community-based natural hazard risk through the use of FEMA Region 3's Problem Statements Guide.

**Matthew McCullough**, FEMA



# EDSESSIONSAGENDA

## Monday, October 14, 2024, *continued*

### **C3. Outdoor Recreation & Pennsylvania Economic Development** CM | 0.75

The Director of Outdoor Recreation will review Commonwealth strategies to support community-driven integration of outdoor recreation and economic development priorities from the Pennsylvania Office of Outdoor Recreation's Roadmap for the Future and the Governor's Economic Development Strategy.

**Nathan Reigner, PhD**, Pennsylvania's Office of Outdoor Recreation

### **C4. Unearthing Injustices in Zoning** CM | 0.75

Part of the nationwide zoning movement of the early 1920s, Pittsburgh's first zoning ordinance of 1923 was supposedly designed to fix the housing crisis, stabilize property values, stop blight, provide better housing for workers, and give small property owners the same protections that the wealthy had access to for years. While these goals were facially neutral and even claimed to help those with limited power and resources, the resulting ordinance codified and exacerbated existing residential disparities, the legacies of which continue to influence racial and economic inequalities in the city today. Despite over 100 years of zoning in Pittsburgh based on the above goals, the city still faces a housing crisis, property values are widely divergent depending on which pocket of the city they are in, many neighborhoods continue to have issues with blight, housing options for those with fewer resources are limited and often of substandard quality, and the wealthy still have access to more protections than others. In this session, we will discuss Pittsburgh's 1923 zoning ordinance, the legacies of the "solutions" created then that continue to hamper the city's ability to provide equitable housing options, and the echoes of Pittsburgh's story in the story of zoning around the state and across the nation.

**Ruchi Patel, PhD**, UrbanKind Institute  
**Carolyn Ristau**, Details Reviewed LLC

### **C5. Assessing the Economic Impact of Trails on Commercial Districts** CM | 0.75

You've heard that trails are valuable assets, but how can you track their economic impact on your municipality? We will review measurement strategies, indicators, and actions you can take now to assess the economic impact of trails on commercial districts. Is your trail system disconnected from your commercial district? We will discuss how, as network goods, trails can serve to connect assets and organizations. Impact analyses of the Great Allegheny Passage as well as the Three Rivers Heritage Trail in Pittsburgh will be used to spur interactive dialogue. Attendees will walk away with a set of qualitative and quantitative indicators to gauge the economic impact of the trail as well as steps to better connect civic infrastructure.

**Maya Haptas**, Fourth Economy  
**Maura Kay**, Fourth Economy



# EDSESSIONSAGENDA

## Monday, October 14, 2024, *continued*

### C6. **Fast Fun Fervent** CM | **NO CM**

Hear four dynamic speakers covering community revitalization, economic development, zoning & ordinances and other planning topics at the lightning speed. Each speaker will have 7-10 minutes to cover a maximum of 20 slides for 20 seconds each. Attendees will get to learn about a wide variety of topics in short spurts.

**Moderated by Scott Duncanson, AICP**, LEED Green Associate, ENV SP

***Rural Rising: From Disinvestment to Digital Economy Communities of Choice***  
**Charles Eurydice Gray**, Impact Corry

***Regional Parks & Trail Networks in Pennsylvania***  
**Emerson Bannon**, Erie County Planning Department

***So Your Planet Is Hurtling Toward a Climate Apocalypse: What Now?***  
**Jenni Easton, AICP, CNU-A, Pashek + MTR**

***Public Art as Punctuation: Case Studies from Allentown***  
**Julia Guerrero**, Civic Centered

**10:45a – 11:00a**      **Break/Travel**



## THE COMMUNITY ADVANCEMENT FIRM

At OHM Advisors, multidisciplinary  
teamwork focused on people-first solutions  
yields ideas that aren't just different.  
*They're better.*

Share your vision with us *Pennsylvania*,  
and together we'll create great places for people.



**OHM-Advisors.com** | **412.727.0057**



# EDSESSIONSAGENDA

## Monday, October 14, 2024, *continued*

### 11:00a–12:00p Concurrent Education Sessions D (1.00 CM)

#### D1. **Grow Your Own Way: Planning & Land Use Tools for Areas Experiencing Development Pressure**

CM | 1.00

Is development from nearby urban and suburban areas spreading to your municipality? Are you and your residents looking for a way to preserve the rural character that makes your community special without restricting the freedom of your residents to use their land as they choose? This presentation will look at how several communities in Western Pennsylvania are wrestling with this challenge and share tools that have been proposed to help them maintain their identity, while providing a high quality of life for all residents. Presenters will talk about specific land use controls, and zoning techniques and trends, as well as partners and strategies one might not consider in a traditional approach. They'll describe specific case studies, sharing tips and tricks and lessons learned in each community. Case studies will include rural communities as well as suburbs using strategies to create greenways and preserve open space.

**Laura Ludwig, AICP**, Herbert, Rowland & Grubic, Inc.

**Lori Morgan, AICP**, Herbert, Rowland & Grubic, Inc.

**Sommer Schneller**, Herbert, Rowland & Grubic, Inc.

#### D2. **Designated Stop...Bringing Mobility to Rural PA**

CM | 1.00

This session will provide the audience the story of how the rural community, of Clinton County, in Central Pennsylvania identified transportation as a major barrier for its residents and went from a transportation desert to having a stable Designated Stop Program. An overview of Community Action Agencies and how their work in social planning ties directly to many aspects of the community, specifically in this case transportation will be discussed. Through focusing on the Clinton County Designated Stop Project and detailing the various planning processes that were undertaken to bring a needed resource to the community. The presentation will include details about the initial planning process, starting at the Community Assessment level, then moving to the Multi-Model Plan level, which led to the Designated Stop Study. The process how trip data was used to determine the locations for the actual stops will be illustrated along with the public engagement process to validate the locations. With the Designated Stop Program being operational for over a year, real-time data about usage will be shared and case studies of the riders will provide context to the audience. Combining the perspective of the non-profit Community Action Agency, who is the Shared Ride Transportation Provider, as well as the Transportation Planning consultant, the session will be engaging and provide the audience with a direct understanding to how vital thoughtful transportation planning is to rural communities.

**Rachelle Abbott, AICP**, Lycoming-Clinton Counties Commission for Community Action (STEP), Inc.

**Alexis Williams, AICP**, STV, Inc.



# EDSESSIONSAGENDA

## Monday, October 14, 2024, *continued*

### **D3. Public Placemaking: Building Spaces for Community Life**

CM | 1.00

This presentation looks at municipal placemaking projects to create plazas and other public spaces in central, 'Main Street' areas. It introduces the concept with examples from Montgomery County and across the state exploring the types of sites and municipal facilities that provide opportunities for placemaking. It goes on to cover the process of planning, designing, financing, constructing, and programming these spaces with perspectives from local government, citizen advocates, and nonprofit partners.

**Amara Geffen**, Art & Environment Initiative

**John Miklos**, Montgomery County Planning Commission

**Mark Weindorf**, Arc of Crawford County

### **D4. Using GIS to Support State College's Zoning Ordinance Update**

CM | 1.00

State College Borough is working through a comprehensive zoning ordinance revision. Planning Department staff will discuss how various Geographic Information Systems tools have been used to help inform decisionmakers about the impacts of changes to zoning district regulations in areas such as height, density, and property line setbacks. Planners have utilized a number of GIS tools to provide visuals and data for discussion by the decisionmakers as they work toward a new zoning ordinance that can best support the current and future land use objectives of the community.

**Greg Garthe, AICP**, State College Borough

**Ed LeClear, AICP, EDFP**, State College Borough

### **D5. Bridging Communities: Advancing Erie Bayfront Parkway**

CM | 1.00

Join us for an insightful conference session as we delve into the transformative Bayfront Parkway Project, which can be seen just outside the windows of the Bayfront Convention Center. You may have been wondering what was happening while driving into this conference, as construction crews bustle about, laying the groundwork for what promises to be a pivotal initiative driving the resurgence of Erie's downtown and Bayfront areas. Since its inception in the early 1990s, the Bayfront Parkway (Route 4034) has been a vital east-west artery for the community. However, with the city's evolving landscape and burgeoning development, the need for north-south connections has become increasingly apparent.

In collaboration with local stakeholders and the community, the Bayfront Parkway Project aims to address this need by enhancing pedestrian, bicycle, transit, and passenger vehicle connections between the Erie Central Business District and adjacent waterfront neighborhoods. Moreover, the project seeks to improve safety by reducing crashes on the parkway and mitigating future congestion to ensure an acceptable level of service or delay.

**Audrey Knight**, Erie County Department of Planning and Community Development

**Courtney Lyle**, PennDOT

**Tom McClelland**, Penn DOT



# EDSESSIONSAGENDA

## Monday, October 14, 2024, *continued*

### **D6. The University in our Backyard: How Communities Can Harness Higher Education Resources to Support Equitable Neighborhood Revitalization**

CM | 1.00

While universities often contribute to gentrification, they can also provide powerful and effective resources for community-led revitalization efforts. In Erie and Pittsburgh residents are using effective strategies and partnerships with Gannon University (Gannon) and the University of Pittsburgh (Pitt) to support neighborhood priorities. This panel of community and university representatives will identify different approaches that these residents and universities are using to address shared community concerns related to vacant, abandoned, and deteriorated properties. At Gannon, these strategies include helping the neighborhood develop its revitalization plan, supporting a resident-led nonprofit to lead implementation, and integrating neighborhood-focused projects into coursework and extracurriculars. At Pitt, the partnership includes a “communiversity” course in which residents are working with law students to prepare proposals to develop four city-owned vacant lots.

**Stephanie Dangel, Esq.**, University of Pittsburgh

**Erika Ramalho**, Gannon University

**12:00p – 1:45p**

### **Luncheon, State of the Chapter and Annual Awards Presentation**

Join us as we celebrate the achievements of fellow Pennsylvanians who shape where we live, work and play! Join Craig Peiffer, Chair of the PA Chapter of APA Awards Committee, for an inspiring Annual Awards program. We will recognize the work of fellow planners, planning officials, and elected officials and their roles in planning Pennsylvania. PA Chapter of APA President, Leah Eppinger will present the State of the Chapter highlighting the Chapter’s successes and key activities during 2024.

**2:00p – 3:15p**

### **Mobile Workshop**

#### **M3. Tides of Change: Mobilizing the International Coastal Cleanup in Your Watershed**

**2:00p – 4:45p**

### **Mobile Workshops**

#### **M4. Successfully Deploying Gaming Revenue Through the Impact Investment Model**

#### **M5. Help Us Create Safer Streets in Erie**

**Questions?** If you have questions about the conference, please contact the Chapter office at [info@planningpa.org](mailto:info@planningpa.org).



# EDSESSIONSAGENDA

## Monday, October 14, 2024, *continued*

### 2:00p–3:15p Concurrent Education Sessions E (1.25 CM)

#### E1. Pennsylvania Land Use Law Update: Appellate Cases from 2023-2024

##### CM | 1.25 (1.00 Law)

Pennsylvania appellate cases will be presented in traditional lecture format as well as interactively with hypotheticals to demonstrate how a recent case decided the outcome. Cases will cover topics related to zoning (variances, special exceptions, and conditional uses) and subdivision & land development (plan approvals, modifications, challenges). Practice points distilled from each case will be emphasized.

**Leah Eppinger, AICP**, Housing Authority of the County of Dauphin  
**Charles Suhr, Esq.**, Stevens & Lee

#### E2. Low-Cost Strategies for Public Engagement That Any Municipality Can Implement

##### CM | 1.25

For any plan to be successful, it must reflect the needs and desires of the community it serves, but obtaining public input can be difficult, time consuming, and costly. People are busy. They may not be available or comfortable attending traditional public meetings. Presenters will discuss creative strategies they use to encourage public engagement and share how they've applied these strategies to success in real world case studies. The techniques discussed will focus on technologies like interactive web applications, Miro boards, surveys, and ArcGIS online, all of which were chosen because they are affordable and accessible to users of any technological ability. Presenters will demonstrate how these tools may be used in conjunction with in-person engagement by duplicating traditional engagement activities virtually, for consistent and comparable results. The presentation will discuss how even small planning staffs with limited technical experience can develop and maintain online engagement, without paying for costly subscriptions or expensive consultants. Presenters will also discuss how these online tools may be leveraged to streamline data processing after the engagement period is over.

**Laura Ludwig, AICP**, Herbert, Rowland & Grubic, Inc.  
**Lori Morgan, AICP**, Herbert, Rowland & Grubic, Inc.  
**Sommer Schneller**, Herbert, Rowland & Grubic, Inc.

Register online at  
[planningpa.org](https://planningpa.org)



# EDSESSIONSAGENDA

## Monday, October 14, 2024, *continued*

### E3. Planning for Redevelopment Prior to Decline: Strategies to Maintain a Vibrant Suburban Corridor CM | 1.25

For three decades, Cranberry Township has been one of the fastest growing communities in Southwestern Pennsylvania. Through careful planning, the Township has been able to manage this growth while providing for increased infrastructure, parks, programs, and other local government services. Following the 2020 Census, Cranberry Township officials began to focus on new challenges as the community entered the next phase of its development history. Like numerous other suburban communities throughout Pennsylvania, early commercial investments are beginning to show their age and private development is starting to leapfrog existing infrastructure in favor of cheaper land on the fringe. This typical land development pattern combined with post-pandemic changes to the commercial and office sectors have begun to question projections of sustained growth. If left unchecked, these trends will directly impact the long-term economic health of the community. In an effort to address these trends prior to experiencing significant decline, the Township completed a Redevelopment Study of its commercial core in 2023. The study included input of a commercial sector advisory group and focused on a simple set of questions: how can Cranberry's commercial core adapt and remain strong well into the future, and how can the Township guide that process from its current position of fiscal and market strength. The plan uses two scenarios to explore the Township's future: strategic re-development or a status quo approach. It does this in the context of the potential for occurring in one of America's slowest growing and rapidly aging metropolitan areas. Using the Redevelopment Study as a catalyst for further discussion, this presentation offers a different way to approach and plan for future challenges using data, community input, and carefully researched outcomes and scenarios.

**Kyle Beider, AICP, RLA, PhD**, Cranberry Township

**Ronald Henshaw, AICP**, Cranberry Township

**Matt Ingalls, AICP, ASLA**, CZB, Inc.

### E4. Crawford Inspired: Leading Community Change through Comprehensive Planning CM | 1.25

As planners we strive to change the communities we work in through long-range and short-term plans. However, many of these documents sit on the shelf or result in coalitions falling apart after the adoption of the plan. In some cases, we don't really on or establish the planning framework necessary to carry out the good work we aim to accomplish. After almost a decade of limited to no action taking place to "move the needle" on the county's comprehensive plan, Crawford County's Planning Commission, staff, and elected officials decided to do things differently. The resulting plan, primarily focused on the implementable comprehensive plan model, has resulted in creating 9 bold moves that will move the county forward, activating local community champions, empowering citizens to move on tackling the tasks necessary to accomplish our vision of the future, and a strategic framework for injection of resources and public policy from the County. This session explores Crawford County's 2024 comprehensive plan process and outcomes as a case study to provide takeaways in establishing a collective vision, metrics to achieve success, and bold moves undertaken by wide ranging partnerships. All of which is grounded in public outreach, quantitative and qualitative data analysis, and building capacity during the process.

**Zach Norwood**, Crawford County Planning

**Kathy Wyrosdick, AICP**, Michael Baker International



# EDSESSIONSAGENDA

## Monday, October 14, 2024, *continued*

### E5. **Managing Conflict Continued: Conflict Management in Action** CM | 1.25

This session expands upon the principles outlined in the and Connect the Dots Guide for Managing Conflict in the Public Participatory Process practical strategies for mitigating conflict in public meetings by putting your skills to the test in a small group setting. Reviewing the basics of why conflict emerges and the tools to anticipate and address potential sources of tension, the heart of the session lies in experiential learning through role-playing exercises. Participants will have the opportunity to apply the conflict resolution tools in scenarios that reflect real-world conflicts they might encounter in public meetings, both virtual and in-person. By engaging in these hands-on exercises, planners will not only enhance their proficiency in conflict resolution but also bolster their confidence in navigating conflict in participatory processes.

**Rosanne Lubeck**, Connect the Dots

### E6. **So...You Want to Be A Planner** CM | 1.25

One of the most challenging moments in any career is entering the field as a young professional. For young planners, the group not only has a limited understanding of the practice and where they could fit in, they also lack connections with experienced planners who have this information. This session is designed to bring together those new to the profession and seasoned professionals for the purpose of sharing valuable information about the field.

*Moderator:* **David Hunter, AICP**, Berks County Planning Commission

*Moderator:* **Jeff Raykes, AICP**, Stuart Group

**Emily Diaz-Melendez**, City of Reading

**Trajan Jones**, Indiana Borough

**Abigail Roberts**, City of Lock Haven

**Chris Stroehler, AICP**, South Whitehall Township





# EDSESSIONSAGENDA

## Monday, October 14, 2024, *continued*

### 3:45p– 4:45p Concurrent Education Sessions F (1.00 CM)

#### F1. Shakespearean Ethics Skits 2024: To Plan or Not to Plan

CM | 1.00 **Ethics**

In this session, well-known Shakespearean characters, reimagined as planners, present a series of skits based on past AICP Ethics Cases of the Year. Romeo, the Zoning Officer for the City of Verona is faced with a potential conflict of interest when his beloved Juliet's parents file for a variance to build castleminiums on their family orchards. Next, King Lear, Planning Director in the community of Gloucester, is leading the process of developing a future land use plan. Lear is eager to get the plan adopted as quickly as possible, but Staff Planner, Duchess Kent, questions the integrity of the rushed planning process that has limited public participation and input. Finally, Hamlet, a Prince-ipal Planner, is faced with the ethical dilemma: To plan for equity and inclusion or not to plan for equity and inclusion. This fresh take on traditional AICP cases of the year aims to educate and entertain.

**Scott Duncanson, AICP, ENV-SP, LEED Green Associate**, Gannett Fleming

**Pattie Gутtenplan, AICP, RLA**, Montgomery County Planning Commission

**Eric Jarrell**, Montgomery County Planning Commission

**Mike Pritchard, AICP**, York County Planning Commission

**Katie Wickert**, PA Department of Community & Economic Development

#### F2. Linking Erie's Bayfront to Presque Isle State Park: Collaborative Planning Successes and Future Initiatives

CM | 1.00

The City of Erie and Millcreek Township have embarked on a collaborative planning effort aimed at linking Erie's vibrant downtown and bayfront to the iconic Presque Isle State Park. Through strategic alignment of comprehensive plans, including Erie Refocused and Embrace Millcreek, along with targeted subarea plans such as the Presque Isle Gateway plan, these municipalities have leveraged grant funding along with private and institutional investment to enhance regional connectivity and economic vitality. We will explore the successful collaboration between the City of Erie, Millcreek Township, and Erie Events. The Executive Director of Erie Events will discuss how his organization has been operating and investing in key visitor attractions along the bayfront, including the convention center, multiple hotels, and a future market house development. Learn about their cooperative planning efforts aimed at enhancing the visitor experience and supporting economic growth in the region. Through case studies and project examples, we will showcase completed initiatives and ongoing efforts to enhance the Bayfront Parkway and West 8th Street corridor, creating a seamless connection between urban amenities and natural landscapes.

Discover how collaborative planning has attracted investment, fostered regional cooperation, and positioned the Erie region for sustainable growth and development.

**Jacqueline Spry**, City of Erie

**Matthew Waldinger**, Millcreek Township



# EDSESSIONSAGENDA

## Monday, October 14, 2024, *continued*

### **F3. Active Transportation Safety on Local Rural Roads** CM | 1.00

For local rural roads, they are often the only place for residents to go for walk, walk their dog, ride a bike, and even for children to learn how to bike. These roads can also be the only opportunity to link trails and communities with parks, lakes, schools, and other destinations. Local rural roads in Pennsylvania have several built-in constraints to active transportation. First, there is limited right-of-way, which then results in limited pavement width. Unlike residential neighborhood streets, these roads often have higher traffic speeds, which can include trucks. The alignment of the roads may have developed over time, and have hills, curves, intersections, and other features which increase the potential for conflict. Lastly, the resources for improving and maintaining the roadways are limited. Determining the most appropriate option for promoting safe active transportation on these roads is difficult because of the constraints. This session will present an interactive discussion of the options for active transportation on rural roads, using Pennsylvania examples. A major focus on the session will be on safety for all road users and the application of PennDOT/FWHA standards and guidelines.

**Patrick Wright**, Pennoni

### **F4. Blowing Up Your Boards and Other Bold Ideas to Bring Your Comp Plan to Life** CM | 1.00

How do you guarantee that your community's new comprehensive plan will see fruition? Operationalize its implementation. The presenters will explore fresh ideas for delivering on vision, highlighting an innovative accomplishment by the Municipality of Mt. Lebanon to completely restructure the community's appointed advisory boards to align with the key issues at the center of "Ascend Lebo," the recently adopted comprehensive plan. Discussion will also focus on inclusive engagement strategies to discern shared values and build momentum for progress, as well as integrating the plan into the Capital Improvement Program. An interactive portion will identify and troubleshoot common barriers to comprehensive plan implementation.

**Jenni Easton, AICP, CNU-A**, Pashek + MTR  
**Ian McMeans**, Municipality of Mt. Lebanon

### **F5. How to Activate the Outdoor Economy to Drive Business & Enhance Quality of Life** CM | 1.00

In the last year, the economic impact of the U.S. outdoor recreation economy surpassed \$1 trillion for the first time, Pennsylvania launched the Office of Outdoor Recreation to grow the outdoor sector, and communities across Pennsylvania began to ask how they can more fully leverage their outdoor assets for economic development. This session will offer a crash course in the scope and nature of Pennsylvania's outdoor recreation economy, share public and private resources and best practices to better understand and grow the outdoor economy, and drill down to the local level to see how planners are incorporating the outdoor economy into their projects. Presenters will foster a dialogue with the audience through open-ended questions and interactive polling.

**Silas Chamberlin, PhD**, York County Economic Alliance  
**Tim Staub, AICP**, Herbert, Rowland & Grubic, Inc.



# EDSESSIONSAGENDA

## Monday, October 14, 2024, *continued*

### **F6. Planning for Equitable and Green Infrastructure in Erie** CM | 1.00

How can planners reduce the disproportionate environmental burden faced by environmental justice and frontline communities? Join this session to hear presentations about how some environmental justice issues can be addressed through innovative solar technology and thoughtful planning. This session will encourage creative thinking and potentially take an unconventional look at planning tools. Participants are likely to develop a better understanding of the environmental justice issues facing Pennsylvanians and how professional planners can help.

**Elsbeth Koehle**, PA DEP Office of Environmental Justice  
**John Purvis**, Solar Revolution LLC

### **5:00p – 6:00p Evening Reception with Exhibitors**

Monday's conference activities wrap-up with a reception with our Exhibitors. Take advantage of this opportunity to network with the Exhibitors and the other conference attendees. It's a great place to make plans to venture out and discover the city!

### **Evening Planners Social**

Meet at Sheraton lobby at 6:30. There will be a bus that will run continuously until 8:00 PM. Planners Social will be at Brewerie at Union Station. Every good planner has a team of colleagues to lean on. This social aims to connect planning professionals from all over the state for an evening of drinks, snacks and good conversations. This social is sponsored by Northwest Section and Michael Baker International. *(Additional food and beverage will be available for purchase)*

### **Evening Dinner on your own**



# EDSESSIONSAGENDA

**Tuesday, October 15, 2024**

- 7:00a – 3:00p**      **Registration Open**
- 7:00a – 2:00p**      **Exhibit Hall Open**
- 7:00a – 8:15p**      **Continental Breakfast with Exhibitors**
- 7:15a - 8:00a**      **Professional Development Committee Meeting**
- 7:15a - 8:00a**      **Planning Officials Development Committee Meeting**
- 8:15a – 9:45a**      **Introductions**  
**Plenary**  
**Proactive PA: Insights on Planning Related Pending Actions and Legislation**  
**CM | 1.25**

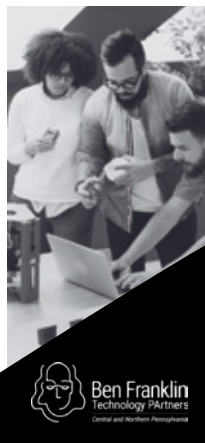
As communities across the Commonwealth work to address their changing demographics and physical places, policy shifts in Harrisburg are bubbling to the surface. For the first time in almost two decades community planning, economic development, and housing are not only up for discussion on the floor of the General Assembly, but are a priority in the Governor's administration. Our panelists join us today to share their insights on the conversations, administrative actions, and pending legislation that would impact planners, developers, and our communities.

**Morgan Boyd**, Pennsylvania Department of Community and Economic Development  
**Theodore Martin**, Pennsylvania Department of Community and Economic Development  
**Stacie Reidenbaugh**, 10,000 Friends of Pennsylvania

- 9:45a – 10:15a**      **Refreshment Break with Exhibitors**
- 10:15a – 11:30a**      **Mobile Workshop**  
**M6. Planning for Bluff Recession Strategies Against Climate Change Issues**

## WE PROVIDE FUNDING AND BUSINESS GUIDANCE TO ASPIRING ENTREPRENEURS

Learn how **Ben Franklin Technology Partners** can help you on your startup journey.  
**CNP.BENFRANKLIN.ORG**



**HUDSON  
COMPANIES**

General Construction   Real Estate Development   Real Estate Investment

**TYLER M. HUDSON, PARTNER**

**THUDSON@HUDSONCOMPANIES.NET**

**724-981-1204 EXT.104**

**[www.hudsoncompanies.net](http://www.hudsoncompanies.net)**



# EDSESSIONSAGENDA

**Tuesday, October 15, 2024 *continued***

**10:15a – 11:30a      Concurrent Education Sessions G (1.25 CM)**

**G1. Addressing the Housing Supply Crisis through Zoning Reforms**

CM | **1.25 (1.00 Law)**

Addressing the Housing Supply Crisis through Zoning Reforms: how can we create housing inventory in the right places; what barriers need to be removed to increase inventory; and what incentives will make residential development projects more feasible in Pennsylvania? This session is a mini-summit for planning, housing, real estate, and land use professionals, lenders, public officials, and others to discuss barriers to the production of housing units and to recommend solutions to increase the supply of housing. Participants will identify and discuss challenges such as zoning restrictions, permitting, and other impediments to the development of residential housing, and will later identify and prioritize regulatory and legislative solutions, such as developer incentives and resources needed to address the housing crisis in Western PA. The PA Housing Choices Coalition will present information about the coalition and current proposed legislation for zoning changes and updates to the Municipalities Planning Code under consideration in the PA General Assembly that are intended to improve housing supply and attainability.

**Pattie Guttenplan, AICP, RLA**, Montgomery County Planning Commission

**Ed LeClear, AICP, EDFP**, Borough of State College

**Stacie Reidenbaugh**, 10,000 Friends of Pennsylvania

**G2. Planning for Climate Pollution Reduction in Pennsylvania: State and MSA Perspectives**

CM | **1.25 (1.00 Sustainability/ Resilience)**

In March of 2023, the US Environmental Protection Agency announced the historic Climate Pollution Reduction Grants Program (CPRG) for states, territories, tribes and local governments. The CPRG program includes \$250 million in formula planning grants, and an additional \$4.6 billion in competitive implementation grants to support actions to reduce greenhouse gas emissions, plus criteria and hazardous air pollution, through deployment of new technologies and solutions that will transition America equitably to a low-carbon economy that benefits all Americans. For this session, representatives from all four planning grant recipients in Pennsylvania propose a traditional panel session in which attendees will benefit from a comprehensive speaker series. This session will facilitate dialogue between the audience and state-wide planners and officials who have successfully applied the concepts and produced specific deliverables required as part of the CPRG planning process. CPRG planning grants were awarded to the Pennsylvania Department of Environmental Protection's Energy Programs Office with a \$3 million state planning grant, followed by the three most-populous Metropolitan Statistical Areas (MSAs), with \$1 million metropolitan-area planning grants awarded to three MSAs. These MSAs are represented by the Delaware Valley Regional Planning Commission (Philadelphia); the Lehigh Valley Planning Commission (Allentown); and the Southwestern Pennsylvania Commission (Pittsburgh).

**Becky Bradley, AICP**, Lehigh Valley Planning Commission

**Lindsay Byron, PE**, PA Department of Environmental Protection, Energy Programs Office

**Chris Linn, AICP, PP**, Delaware Valley Regional Planning Commission

**Catherine Tulley, GISP**, Southwestern Pennsylvania Commission



# EDSESSIONSAGENDA

## Tuesday, October 15, 2024 *continued*

### **G3. Impactful Community Engagement on a Budget**

CM | 1.25

This session provides participants with a framework for designing and implementing an impactful community engagement strategy with limited funding or time constraints. Learn to prioritize which engagement tactics will best produce the key information a project needs in the decision-making process while building resourceful relationships with community partners for deeper long-term impact. This session will also provide practical and cost-effective tips to ensure that engagement activities and tactics are inclusive and welcoming to diverse stakeholder audiences. Finally, this session will cover the importance of transparency and communicating decisions and findings with project stakeholders.

Interactive case studies allow participants to collaboratively brainstorm creative solutions and apply the concepts learned to real-world scenarios. Participants are encouraged to think critically about their own community engagement practices and identify areas for improvement. By the end of the session, participants leave with a deeper understanding of actionable strategies and the importance of community engagement. Armed with these insights, they are better equipped to build strong relationships with their communities, even with limited resources at their disposal.

**Sylvia García-García**, Connect the Dots

### **G4. For the Good of All: Planning for Outdoor Recreation Economy in PA**

CM | 1.25

Representatives from the PA Department of Community & Economic Development's Office of Community Planning, PA Department of Conservation & Natural Resources Office of Outdoor Recreation, Hemlock & Forge, and Johnson Consulting for an overview of outdoor recreation economy in Pennsylvania, the wealth of benefits it provides to communities of all sizes, and the potential negative impacts associated with the growth of outdoor recreation within gateway communities. The session will deep dive into the benefits of outdoor recreation as an economic development and revitalization model, while reviewing potential pitfalls and common challenges planners of all levels need to be aware of in communities with an outdoor recreation focus.

**Gary Johnson**, Johnson Consulting

**Nathan Reigner, PhD**, DCNR Office of Outdoor Recreation

**Wyatt Schroeder**, Hemlock & Forge

**Katie Wickert**, PA Department of Community & Economic Development

Register online at  
[planningpa.org](https://planningpa.org)



# EDSESSIONSAGENDA

## Tuesday, October 15, 2024 *continued*

### G5. Community Surveys and Quality of Life: Examples from Erie and Pittsburgh

CM | 1.25

This panel brings together planners and community members who have been involved in creating and distributing community surveys and activating their results in plans and projects. Community surveys are important components of data collection for planning. They are critical components of understanding place for planners and mobilizing access to residents and action. They are also complicated and can be expensive. How have local municipalities used community surveys to better direct equitable investments by improving quality of life one household at a time? This session will focus on recent community surveys in Western Pennsylvania: Erie and Penn Hills. In Erie, results and impacts of the Erie Community Survey conducted in 2018 - 2019 resulted in multiple improvements in processes and projects. The results were also immediately relevant as a component of survey resulted in direct outreach and distribution of things residents needed as the COVID pandemic began in 2020. The survey resulted in economic gains for Erie and major improvements in capital reinvestment and environmental gains in green space. The Penn Hills community survey, conducted in 2023, also resulted and is resulting in numerous improvements for that community. The results are being used to inform smart transportation planning and housing access and home repairs. The results are also coupled with other data to examine the impacts of outside investors on the community's housing market. The panel will conclude with recommendations for how community surveys can be built into planning processes for results and actions for residents' quality of life.

**Erin Carey**, City of Erie

**Sabina Deitrick, PhD**, University of Pittsburgh

**Jada Rossman**, Community Counts/Jackson Clark Partners

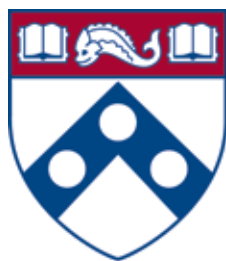
### G6. AICP: Is This Certification For You

CM | NO CM

Are you interested in becoming a certified planner by taking the AICP exam? Not sure yet? The PA Chapter and its Professional Development Committee are here to help you decide. In this session, speakers will explain the benefits and requirements of certification, the application process, and the format of the exam for those trying to decide if or when to take the exam. For those who have already decided to take the exam, speakers will identify resources available to help prepare for testing. The session will be driven by the needs of attendees, and questions are encouraged.

**Scott Duncanson, AICP, ENV SP, LEED Green Associate**, Gannett Fleming

**Alexis Williams, AICP, PP**, STV, Inc.



**Weitzman**  
SCHOOL OF DESIGN  
UNIVERSITY of PENNSYLVANIA



# EDSESSIONSAGENDA

## Tuesday, October 15, 2024 *continued*

**11:45a – 1:30p**

### **Pitkin Luncheon & Lecture**

**Youth Are Not the Future, But the Now** (12:30p – 1:30p)

**Corrin Wendell, AICP, YEP!** Youth Engagement Planning  
CM | 1.00

Young people have incredible excitement, eternal optimism, and a contagious spirit! They are naturally inquisitive, inclusive, helpful to others, imaginative, and full of wonder. YEP! believes that youth have the power to positively shape the future of all of our communities and this keynote will showcase how we have made it our mission to encourage young people to learn, create, and participate in activating change in the world.

YEP! creates opportunities for youth to meaningfully advocate for change in their own communities and built environments while simultaneously teaching planners about youth engagement. Youth are rarely considered as part of the planning processes, and planners are even more rarely trained in youth engagement. Yet, youth represent a sizable demographic within any community and youth engagement is critical to an equitable planning process. Doing the hard work of incorporating diverse youth voices into planning processes yields manifold benefits when it comes to building more equitable community engagement processes - and, additionally, recruiting a more diverse cohort of future planners. Empowering youth can begin bridging the engagement gap with historically marginalized communities.

Corrin will share YEP! experiences from engaging with over 7,000 youth nationally, including: Bringing diverse perspectives into all planning processes by engaging diverse youth populations; creating opportunities for youth to participate in advocacy and engagement; developing customized tools to involve youth in the local planning, including modifying resources for different age groups; effectively using youth input to craft plans; and messaging why investing in youth engagement is an essential part of the planning process. Corrin will showcase diverse perspectives that encourage planners to lead successful youth engagement efforts in their own communities!

**1:30p – 2:00p**

**Dessert with Exhibitors & Announcement of Winners (basket, auction and 50/50)**





# EDSESSIONSAGENDA

**Tuesday, October 15, 2024 *continued***

**2:00p - 3:00p      Concurrent Education Sessions H (1.00 CM)**

**H1. Dancing with Denizens of the Ideological Lagoons: Political Polarization and Community Engagement**  
CM | **1.00 Equity**

Political division has always existed. But today, we are seeing alarming new levels of polarization in both rural and urban parts of the Commonwealth. Stark disagreements regarding the economy, racial justice, climate change, crime, and other issues are seeping into local politics and impacting our ability to plan, fund, and implement improvements at local levels – even as support for many such improvements (trails, parks, quality housing, public services) are shared across the aisle. At its worst, polarization means dysfunctional meetings, open hostility, and disrupted or even abandoned public involvement. Community planners, often tasked with leading public involvement, are scrambling to adapt as they face a distrusting public that is quick to conflict for reasons far beyond the planning objectives that brought them together. Designing and facilitating effective outreach and engagement in these environments is both a skill and an art. The aim of this session is to build these competencies by examining the roots of political division, how it has migrated into local decision-making processes, and ways planners can reframe the messaging and rebalance participation in trust and understanding. The format will be participatory as presenters discuss the underpinnings of division and compare and contrast emerging conflict resolution techniques with the practice and experiences of attendees. This intentional participatory element is intended to encourage reflective learning and build connections among practitioners who plan and design and facilitate public involvement.

**Kirsten Compitello, AICP**, Michael Baker International  
**Jeff Raykes, AICP, DED**, Stuart Group Consulting

**H2. Thumbs Up for Community Planning! Measuring Landscape Conservation on the Regional Scale**  
CM | **1.00**

This session will explore various scales of Landscape Conservation along the Appalachian National Scenic Trail Corridor and how the activities contribute to optimizing planning and implementation for environmental and public health. The session will introduce principles of the emerging specialization of Landscape Conservation, as well as achievements and contributions to planning in Pennsylvania from case studies of different scales, such as the Appalachian Trail Landscape Partnership, PA DCNR's Landscape Conservation Program, and the South Mountain Partnership. These examples will be represented by different speakers and each speaker will use Mentimeter to engage the audience and gather feedback and encourage discourse in real time. South Mountain Partnership's recent State of the Region project will be featured as a case study in intense regional collaboration between a local Conservation Landscape and planning agencies that provided four counties in south central Pennsylvania with unique tools to engage multiple target audiences (public, non-profits and planners, and decision-makers) in measuring and improving environmental and public health indicators while centering local Partner organizations at every step. The region faces unique challenges shared by other Pennsylvania regions as a predominantly rural community facing intense development pressure. This process involved over 60 partner organizations and resulted in the collaborative taking on 5 striking regional projects over the next decade.

**Julia Chain**, South Mountain Partnership  
**Katie Hess**, Appalachian Trail Conservancy



# EDSESSIONSAGENDA

## Tuesday, October 15, 2024 *continued*

### **H3. Charged Up: Analyzing the Future of EV Charging Infrastructure** CM | 1.00

Join us for an engaging session where we delve into the latest findings from a study conducted just this year, offering a comprehensive overview and in-depth analysis of the current state of EV Charging in Erie, PA. Fresh off the press, this study explores the feasibility of EV charging infrastructure in Erie, considering various factors such as weather conditions, urban layout, and logistical challenges. The Erie Metropolitan Transit Authority (EMTA) has played a crucial role in this study, engaging Polara to assess the potential for public EV charging at two EMTA-owned sites in Erie, PA. Our discussion will also include thought-provoking “What-If” scenarios, exploring the potential rise of EV charging in Erie and how it fits within the city’s transportation landscape. These insights are not only relevant to planners but also offer a peek into the possibilities of the future for the general public, providing valuable insight into potential changes in their daily commute and lifestyle. Furthermore, we will discuss how these results may or may not be replicated and applied to other cities’ transportation infrastructures, opening up avenues for further research and exploration into similar “What-If” scenarios. Don’t miss this opportunity to gain valuable insights and envision the future of transportation in Erie and beyond, as we collectively navigate the path towards sustainable and electric mobility solutions.

**Aly Abdallahi**, Polara Energy

**Ben Killen**, Polara Energy

**Audrey Knight**, Erie County Department of Planning and Community Development

**Dave Robinson**, Erie Metropolitan Transit Authority

### **H4. Investing in Downtown Redevelopment + People** CM | 1.00

As a result of thoughtful planning, the Erie Central Business District (CBD) has received \$706.2M of targeted investment activity in the past five years. This work has spurred the momentum of downtown revitalization and attracted outside investors to the market. The session will explore the impetus and planning behind the catalytic work of the EDDC, why outside investors like Christian Siembieda are betting on Erie, and how these projects are creating opportunities for economic mobility for Erie residents.

Inspired, in part, by the 2016 Comprehensive Plan, visionary business, philanthropic and community leaders formed the EDDC in 2017, to transform the city of Erie’s downtown core and spark revitalization across the region.

**Chuck Peters**, Altair Real Estate Services

**Christian Siembieda**, Conduit NH Energy, LLC

**Drew Whiting**, Erie Downtown Development Corporation



# EDSESSIONSAGENDA

**Tuesday, October 15, 2024 *continued***

## **H5. It's More Than Elementary, Customizing Outreach for Youth** CM | 1.00

This session will introduce YEP! methodology, best practices, and project examples from across the country for developing young people's civic leadership, integrating younger voices into planning processes, and recruiting diverse voices into our profession. We will touch on principles for customizing your approach and content for age 5 versus 15 versus 25; tips for partnering with school districts; and hard-earned lessons in what works and what doesn't. We will then break into implementation small groups. This session promotes equity and inclusion on two levels. First, the perspectives of younger audiences are insufficiently integrated in most pre-existing planning processes. Second, promoting inclusion long-term requires planners to build lasting relationships in previously excluded communities. Building relationships with youth now means already having relationships with older groups later.

**Corrin Wendell, AICP, YEP!** Youth Engagement Planning

## *DOES YOUR MUNICIPALITY NEED A PLANNING TUNE-UP?*

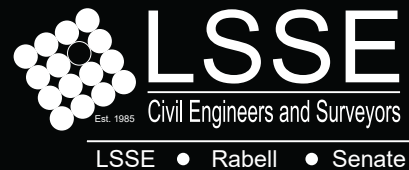
Customized, affordable training and performance improvement for the whole planning team.

*Planning Staff  
Planning Commission  
Zoning Officer  
Zoning Hearing Board*

**DENNY PUKO,  
PLANNING CONSULTANT**

dennypuko@dpukoplaning.com  
412.526.0941

Comprehensive planning  
Strategic planning  
Land use ordinances  
Planning training



### **Professional Services**

- Civil - Site Engineering
- Water
- Wastewater
- Stormwater Management
- Surveying Services
- Geographic Information System (GIS)

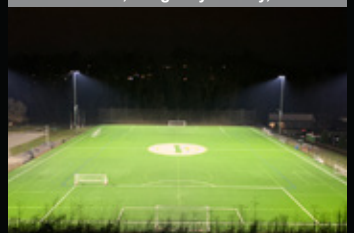
### **Markets Served**

- Municipal
- Commercial
- Industrial
- Institutional
- Residential
- Utilities and Energy

Roxbury Road  
Forest Hills, Allegheny County, PA



Breisinger Field Light  
Pleasant Hills, Allegheny County, PA



846 4th Ave Coraopolis PA 15108 (Allegheny County)

info@lsse.com | www.lsse.com

Branch Offices: Albion, Greensburg, Center, Harmar, Kittanning, Washington, White Oak, PA and Dublin, OH

# 2024REGISTRATION/PRICING

Save big when you register by September 13! **Speakers, Emerging Planners, Planning Commissioners/Officials, Health Advocates/Professionals and Retired Planners** receive a **20% discount off** the registration fees. Discount applied during online registration. **Discount does not apply to mobile workshops.**

**Non-Member**

(Out of state APA members are considered non-members. If you're not a APA member, then you're considered a non-member.)

**Member**

(APA members who belong to PA Chapter are considered members.)

	Non-Member		Member	
	Early Bird Rate September 13	Regular Rate October 4, last day to register	Early Bird Rate September 13	Regular Rate October 4, last day to register
<b>Professional Planner</b>				
Full Registration ( <b>Best Deal!</b> )	\$450	\$500	\$390	\$440
Sunday	\$145	\$195	\$120	\$145
Monday	\$275	\$325	\$250	\$275
Tuesday	\$240	\$290	\$220	\$240
<b>Student</b>				
Sunday	\$80	\$80	\$80	\$80
Monday	\$100	\$100	\$100	\$100
Tuesday	\$100	\$100	\$100	\$100

**FINE PRINT** (When you register for the conference you agree to the following below)

**Fee, Refund and Other Policies:**

- There is NO onsite registration. There are limited spots available for the conference please don't wait to register. Registration will close on Friday, October 4, 2024.
- All paid registrations will receive an email confirmation of registration (when a valid email address is provided).
- Registration fees include all applicable conference sessions and materials, and the meals listed herein. They do NOT cover lodging accommodations, any non-conference meals, mobile workshops and travel expenses.
- The registration fee is fully refundable if the PA Chapter of APA office receives written notification postmarked or emailed no later than Friday, September 20, 2024.
- Cancellations received after September 20, 2024 but before October 2, 2024, will be subject to a \$50.00 administrative fee. If the cancellation is received after October 3, 2024, there will be no refund.
- NO-SHOWS WHO HAVE REGISTERED, BUT HAVE NOT PAID, ARE STILL LIABLE FOR THE REGISTRATION FEES.
- In the unlikely event of cancellation of the conference, the Pennsylvania Chapter of the APA's liability is limited to 100% refund of registration fees and does NOT include penalty fees on travel tickets, deposits for hotel accommodations, or any other incurred expenses.

Information on

# HOTEL RESERVATIONS

## Courtyard by Marriott Erie Bayfront

2 Sassafras Pier  
Erie PA 16507  
814-636-1005



Photos courtesy of Marriott.com

## Sheraton Erie Bayfront Hotel

55 W Bay Road  
Erie PA 16507  
814-454-2005



Photos courtesy of Marriott.com

**Room Rate:** \$169 (Plus applicable taxes)

**Parking:** Self-Parking: Onsite/\$15 per day

[Book your group rate for American Planning Association Room Block](https://www.marriott.com/event-reservations/reservation-link.mi?id=1701369218500&key=GRP&app=resvlink)

(<https://www.marriott.com/event-reservations/reservation-link.mi?id=1701369218500&key=GRP&app=resvlink>)

**Room rate is good until Friday, September 20, 2024, but don't wait to make your reservation. The chapter only has a certain number of rooms in our block and once it's full, it's FULL so don't wait...book now.**

# TRAVEL INFO

## Driving Directions:

Please enter **2 Sassafras Pier, Erie PA 16507** or **55 W Bay Road, Erie PA 16507** in your navigation system.

From Buffalo, NY: 90 Minutes  
From Cleveland, OH: 90 Minutes  
From New York City, NY: 7 Hours  
From Harrisburg, PA: 4.5 Hours  
From Pittsburgh, PA: 2 Hours  
From Toronto: 3.5 Hours  
From Washington, D.C.: 5.5 Hours



## Train Information:

Erie is serviced by the Amtrak railroad station located inside historic Union Station in downtown Erie. To learn more, click [here](#).

## Bus Information:

Erie is serviced by Greyhound Bus Lines. Tickets must be purchased online or by phone (800) 231-2222. Tickets are not available for purchase in person. Bus arrivals and departures are located on the outside platform behind the Intermodal Transportation Building, 208 East Bayfront Parkway. For a list of arrivals/departures click [here](#).

## Airport Information:

Erie International Airport (ERI): <https://www.erieairport.org/>

# CONFERENCE GREENING

In keeping with the PA Chapter's mission, the chapter incorporates the following sustainability initiatives to reduce the impact of the conference on the environment:

- Conference announcement **was not printed** to reduce the Chapter's carbon footprint.
- **Purchase products** made from recycled, recyclable, and rapidly renewable materials.
- Work with the hotel to **purchase local foods** and plan a seasonal menu.
- Prominent on-site effort to **increase recycling** of cardboard, paper, plastic bottles, and cans.
- **Donate excess food** to a food rescue agency when possible or to the employee cafeteria when we cannot.
- Encourage exhibitors to **use products made from recycled, recyclable, and rapidly renewable materials**.
- **Water stations** in lieu of bottled water breaks.

**We encourage attendees to participate in these initiatives through the following options:**

- Participate in the hotel's **linen reuse program** (sheets and towels). Information can be found in the guest rooms.
- **Return waste paper** to conference registration for recycling.
- **Register for the conference online** to save postage and paper costs.
- **Carpool** with colleagues, or take public transportation.



## Save the Date

### 2025 APA-PA Annual Conference

October 12 – 14, 2025

Hilton Harrisburg

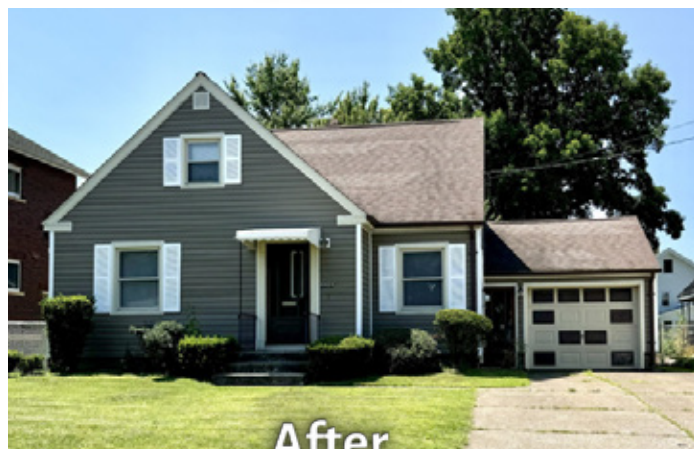
Harrisburg, PA



# Erie County Department of Planning and Community Development



Before



After

## Mission Statement

The Erie County Department of Planning and Community Development provides strategic, coordinated guidance over the growth, planning and development activities in Erie County with the goal of creating a healthy, prosperous, and vibrant community for all residents.

- Agricultural Land Preservation
- Coastal Zone Management
- Subdivisions and Land Development
- Parks, Recreation and Trails Program
- Act 13 Greenways Grant Program
- Transportation Planning
- At-Risk Bridge Program
- Act 137 Affordable Housing
- Housing Rehabilitation Program
- Community Development Block Grant
- Metropolitan Planning Organization
- Keep Erie County Beautiful
- Recycling and sustainability



Visit Our Website

<https://eriecountypa.gov>

