

# Current Initiatives in Sustainable Communities Planning

APA Pennsylvania Chapter Annual Conference  
October 18, 2011

1. Federal Partnership for Sustainable Communities, APA Sustaining Places  
David Rouse, AICP
2. ICLEI Star Community Index  
Andrea Lytle Peet, AICP
3. Sustainability in Cranberry Township  
John Trant Jr., AICP

## Two National Initiatives:

*partnership for*  
**Sustainable Communities**  
an interagency partnership HUD • DOT • EPA

**APA SUSTAINING  
PLACES**



*partnership for*  
**Sustainable Communities**  
an interagency partnership HUD • DOT • EPA

The Sustainable Communities Planning Grant Program is part of the federal Partnership for Sustainable Communities, which brings HUD, DOT and the EPA together to ensure that the agencies' policies, programs, and funding consider affordable housing, transportation, and environmental protection together.



## **Livability Principles**

- 1. Provide more transportation choices.**
- 2. Promote equitable, affordable housing.**
- 3. Enhance economic competitiveness.**
- 4. Support existing communities.**
- 5. Coordinate and leverage federal policies & investment.**
- 6. Value communities and neighborhoods.**

## 2010 Consolidated Appropriations Act

- \$98,000,000 Sustainable Communities Regional Planning Grants

## 2010 Notice of Funding Available from HUD

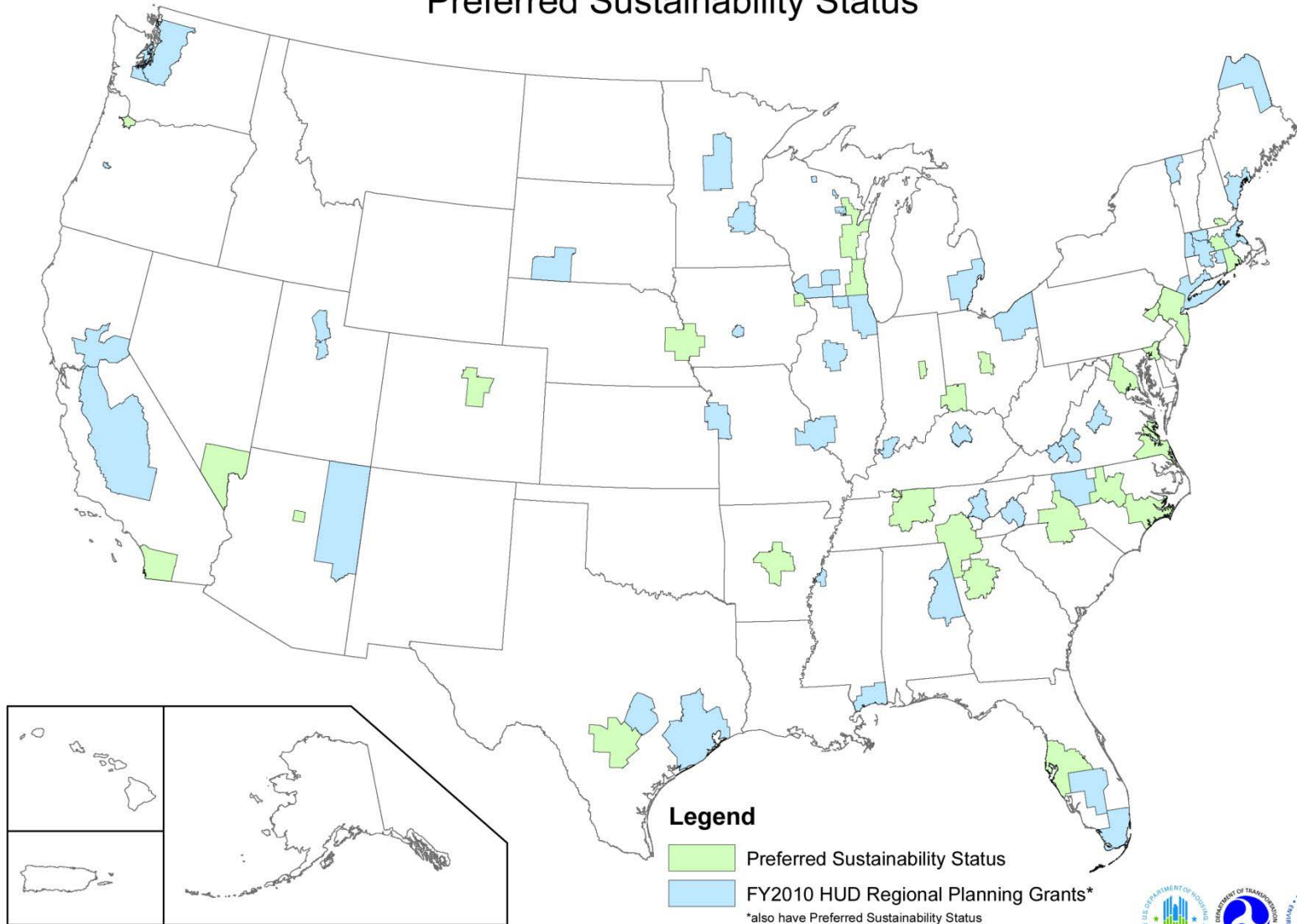
- NOFA issued June 23, 2010
- 225 submissions / 177 complete applications reviewed by HUD
- 45 Awards announced October 14, 2010

## Applications from Pennsylvania

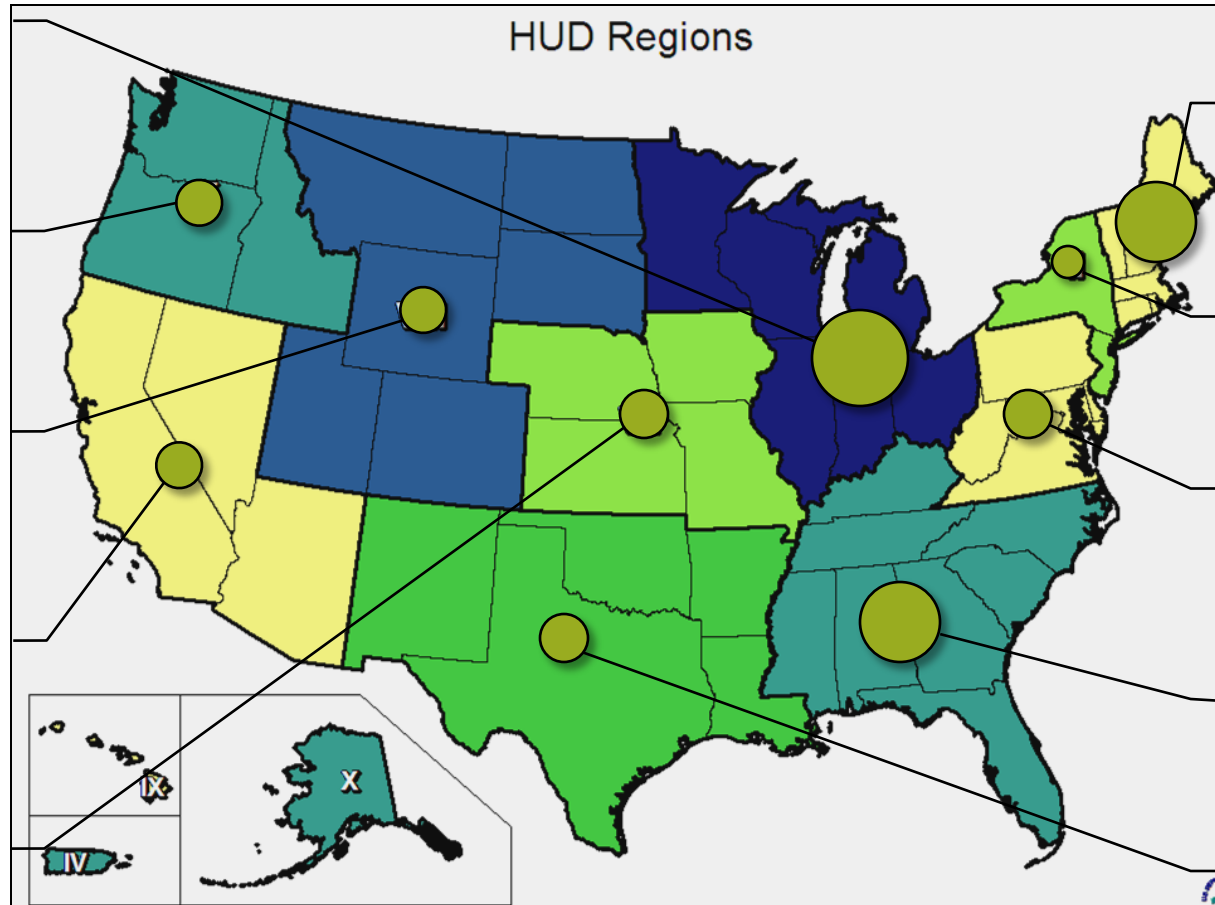
1. Lehigh Valley Economic Development Corporation, Bethlehem\*
2. Southwestern Pennsylvania Corporation, Pittsburgh
3. County of Berks
4. Sewickley Borough
5. Delaware Valley Regional Planning Commission, Philadelphia

\* Preferred Sustainability Status

# Sustainable Communities Regional Planning Grants Preferred Sustainability Status



# Regional Planning Grants



## Sustainable Community Challenge Grant Program

- Created to help support local planning to integrate housing, employment, and public transportation
- FY 2010: \$75 million in combined HUD/ DOT TIGER II funding available
- 1<sup>st</sup> Awards announced by HUD in October of 2010

## 2010 Grants

- \$67.6 million awarded to 62 communities – typically BIG grants
- About 10% of applicants received grants
- HUD Identified \$1.28 billion in demand for the program



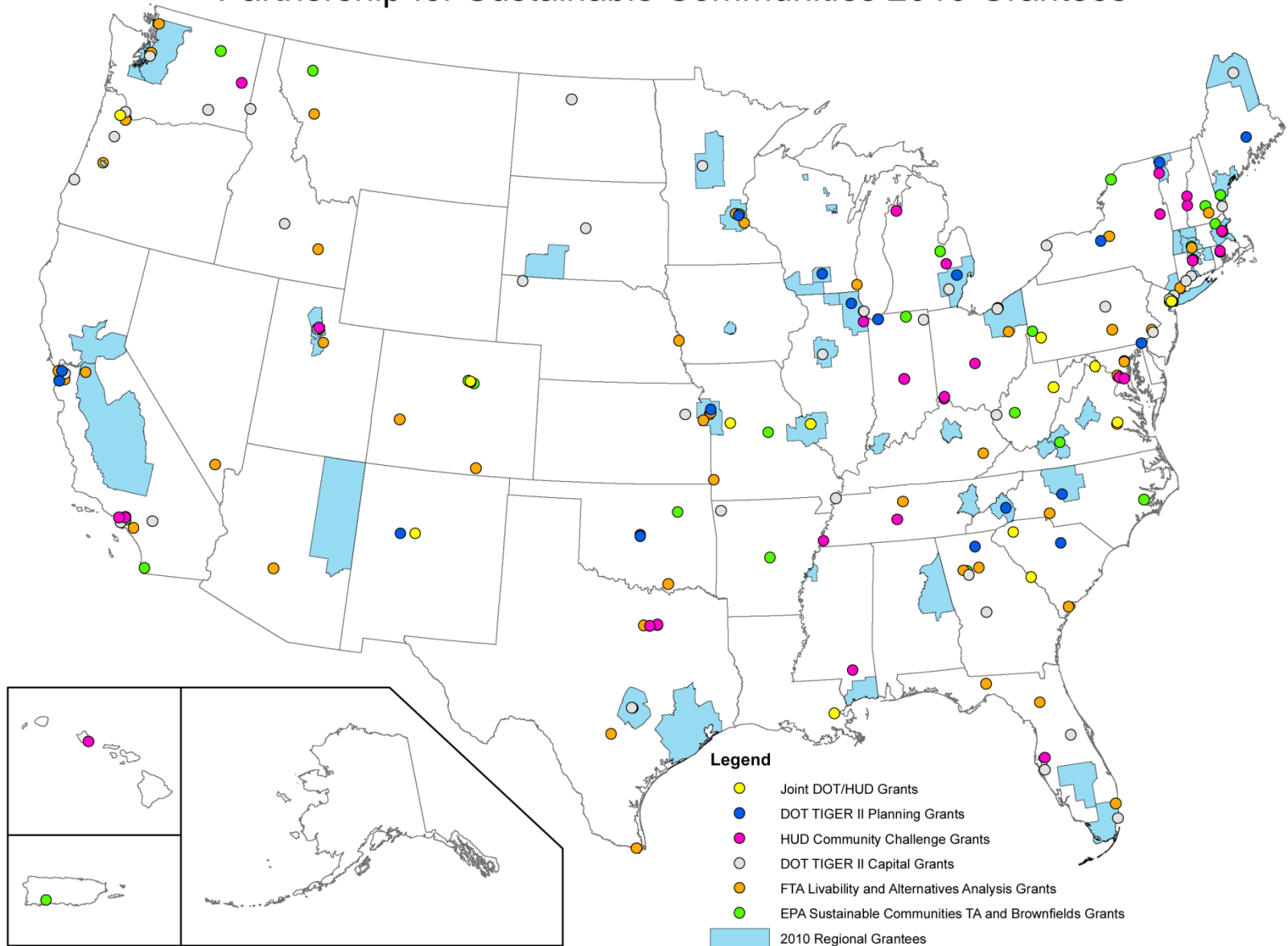
## Pennsylvania Applications

- Union County
- SEDA Council of Governments
- City of Bethlehem
- City of Erie
- City of Johnstown
- City of Lancaster
- Chester County
- Cranberry Township
- City of Kimberton
- Lehigh Valley Planning Commission
- City of Reading
- Cheltenham Township
- Lower Merion Township
- Erie Western PA Port Authority
- Lehigh Valley Econ. Dev. Corp.
- Westmoreland Econ. Dev Initiative

### Pennsylvania Grant Award:

Pittsburgh: Allegheny Riverfront Green Boulevard Plan \$1,500,000

# Partnership for Sustainable Communities 2010 Grantees



## **CATEGORY 1: Regional Plan for Sustainable Development**



Knoxville Regional Consortium

## **CATEGORY 2: Detailed Implementation Plan**



Capital Area Texas Sustainable Consortium

**2010 Regional Planning Grants**  
Two Examples



# PlanET HUD Category 1 Regional Plan for Sustainable Development

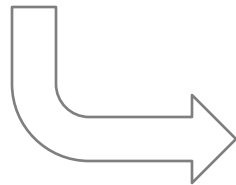
## KNOXVILLE REGION

- 1,900 Square Miles in Appalachia
- 680,444 People
- Key Issues: Air & Water Quality, Economic Opportunity, and Community Health
- Limited Transportation Opportunities



- Broad Consortium of Public & Private Stakeholders
- \$4.3 Million HUD Category 1 Grant

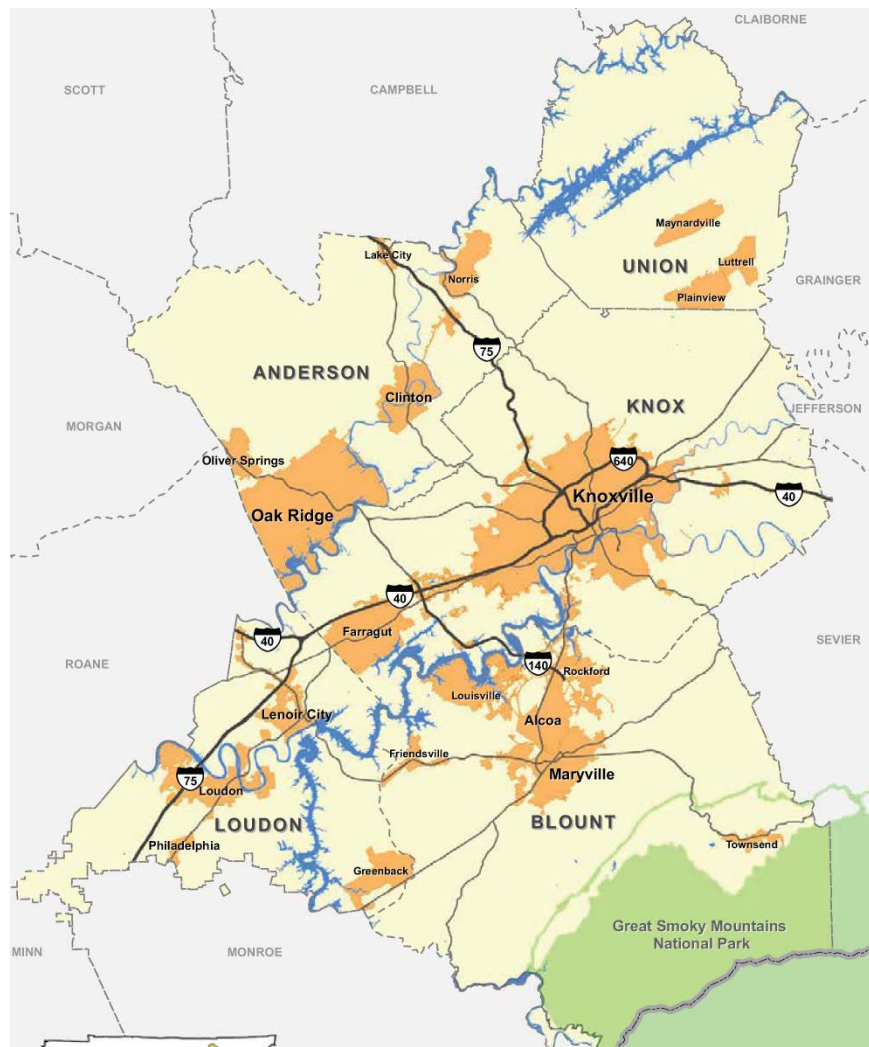
## GRANT APPLICATION



## PLAN

- Engage the Community
- Increase Local Capacity
- Develop a Blueprint for the Region's Future

# **PlanET** HUD Category 1 Regional Plan for Sustainable Development



## Goals for the Process

- Capacity Building
- Community Engagement
- Developing a Blueprint for the Region's Future

*“This three-year effort will develop a community-driven roadmap to help shape where we will live, where we will work and how we will get there.”*



## HUD Category 2 Detailed Implementation Plan

### Capital Area Texas Sustainable Consortium (CATS)

#### **Steering Committee:**

- CAMPO
- CAPCOG
- Envision Central Texas
- CARTS
- Cap Metro
- City of Austin
- City of Round Rock
- City of San Marcos

#### **Based on Adopted 2035 Plan**

- Envision Central Texas
- Long Range Transportation Plan
- Focus on Activity Centers

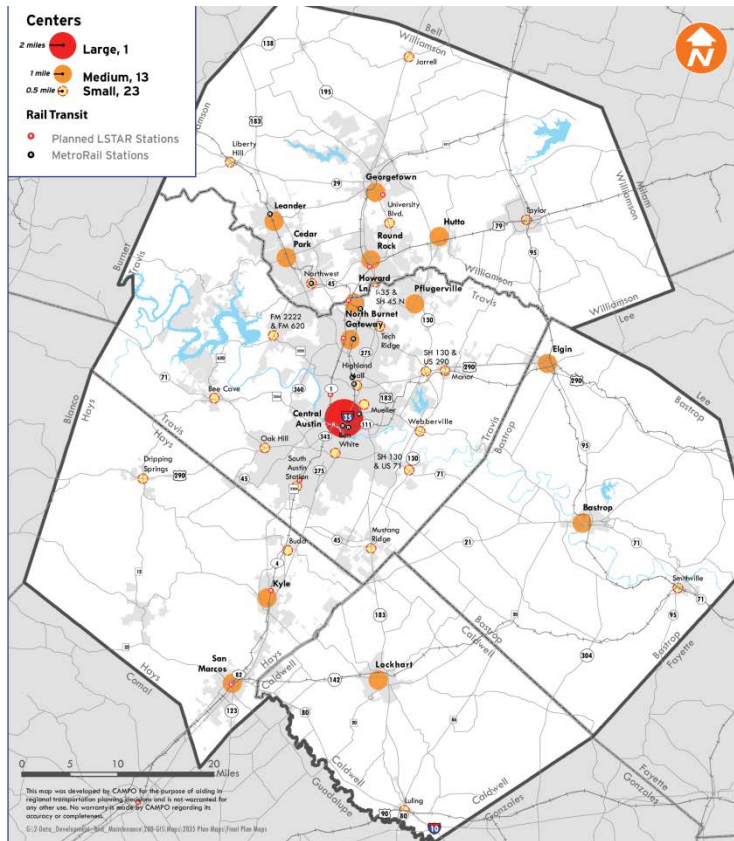
#### **Work Plan**

- Analytics Tool Development
- Demonstration Site Selection
- Outreach Strategy

# HUD Category 2 Detailed Implementation Plan

## Analytics Tool Development

- Collaboration between IBM and University of Texas
- Designed to assess economic impact of different planning approaches



## Demonstration Sites

- Currently selecting locations through application process
- Identified Activity Centers in the 2035 Plan

## 2011 Sustainable Communities Planning Appropriations

- \$100 million total (reduced from \$150 million in 2010)
  - \$67,000,000 Regional Planning Grants
  - \$28,000,000 Community Challenge Grants

## Regional Planning Grants

- Advance Notice Issued June 20, 2011
- NOFA Opened July 27, 2011
- Pre-Applications Due August 25, 2011
- 189 Regions Deemed Eligible (13 from PA)
- Final Applications Were Due October 6, 2011



## Pennsylvania 2011 Applicants Eligible to Apply

- Blair County Planning Commission/Altoona
- Indiana
- City of Harrisburg
- Berks County/Reading\*
- Erie County
- York County
- Delaware Valley Regional Planning Commission/Philadelphia\*
- Lawrence County/New Castle
- Lehigh Valley Economic Development Corp/Bethlehem\*
- North Central Pennsylvania Regional Planning & Development
- Northern Tier Regional Planning & Development Commission/Towanda
- Southwestern Pennsylvania Commission/Pittsburgh\*
- Tri-County Regional Planning Commission/Harrisburg

\* 2010 Applicant

## What's Next for Sustainable Communities?

- House 2012 budget proposal: “de-fund” Partnership
- Senate 2012 budget proposal: \$90 million for Regional Planning and Community Challenge Grants (10% reduction)

## 2012 Presidential / Congressional Elections

- ???



- The **Sustaining Places Initiative** is a multi-year, multi-faceted program to define the role of planning in addressing all human settlement issues relating to sustainability.



## Sustainability: the Defining Challenge of the 21<sup>st</sup> Century

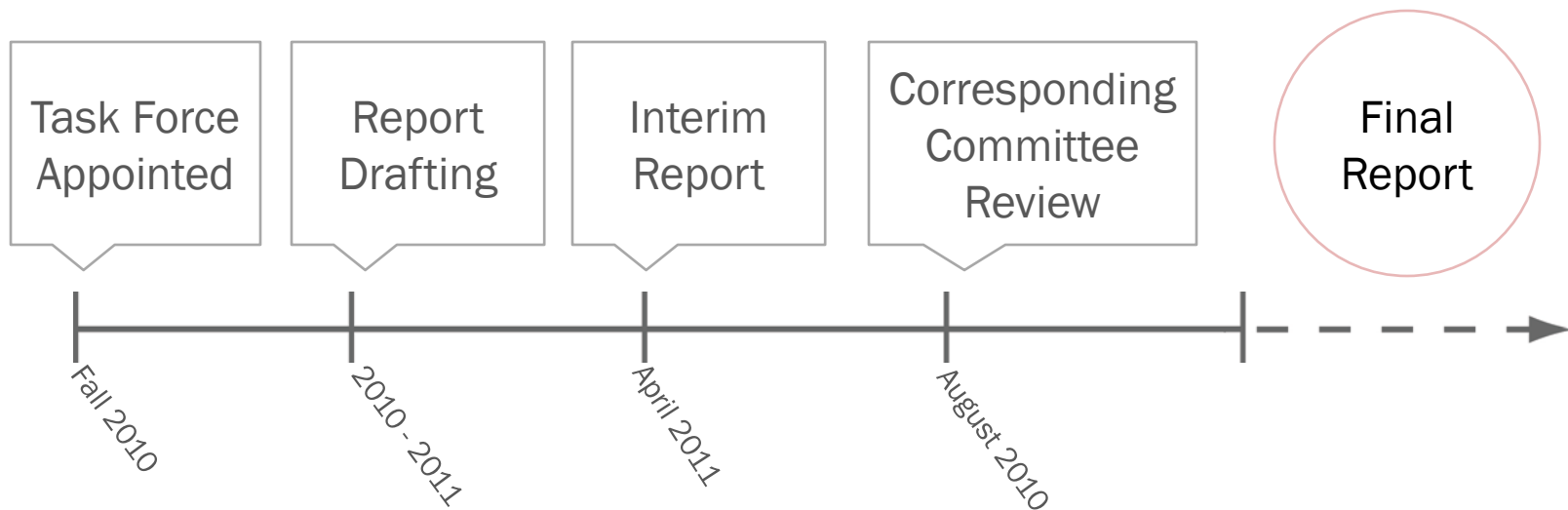
### Issues

- Resource depletion
- Climate instability
- Energy production
- Economic stress
- Social inequity
- Community health



**Members:**

William Anderson, FAICP (Co-Chair)	David Godschalk, FAICP (Co-Chair)
Rudayna Abdo, AICP	Timothy Beatley
Kenneth Bowers, AICP	Stephen Hardy, AICP
Benjamin Herman, FAICP	Daniel Lerch
Ann McAfee	David Rouse, AICP
William Moomaw	Eric Shaw



### Primary Charge:

Focus on the role of the *comprehensive plan* as the leading policy document and tool to help communities of all sizes achieve sustainable outcomes. Examine how plans effect change and are held accountable.

### Secondary Charge:

Examine related changes in the *practice* of planning, including best practices that integrate sustainability into the comprehensive planning process.



## **Sustaining Places Defined**

*Planning for sustaining places is a dynamic, democratic process through which communities plan to meet the needs of current and future generations without compromising the ecosystems upon which we depend by balancing social, economic, and environmental resources, incorporating resiliency, and linking local actions to global and regional concerns.*

Sustaining Places Task Force Interim Report, 2011





## Eight Principles Derived from Best Practices

- Livable Built Environments
- Resilient Economy
- Healthy Community
- Authentic Participation
- Harmony with Nature
- Interwoven Equity
- Responsible Regionalism
- Accountable Implementation

	Health	Neighborhood Livability	Wellness	Open Space and Recreation	Community	Transportation
Stewardship		• Tree preservation and ecologically sound landscape design (LIV 10, 14)		• Environmental best management practices in parks and recreation areas (CPR 4)	• Collaboration with private citizens and organizations (HI 3, 4)	
Open Lands		• Connected system of open lands (Structure Map theme, LIV 23, 40, 41, 42, 45, 46)	• Opportunities for recreation and active lifestyles (SW 2)	• Interconnected system of open lands (CPR 4)	• Engagement and learning (HI 2, 3)	• Interface with open lands (T 4)
Energy	• Innovation in clean energy industry cluster (EH 2)	• Clustered residential development (LIV 27)	• Food production (SW 3)	• Multi-purpose lands (CPR 5)	• Forge partnerships and collaborate regionally (HI 4)	• Connected system of trails (T 11)
Air Quality		• Energy conservation and efficiency in housing (LIV 9)	• Emergency management and the electric grid (SW 1)		• Engagement and learning (HI 2, 3)	• New vehicle types (T 17)
Climate		• Multiple means of travel to reduce vehicle miles traveled (Structure Map theme, LIV 21, 30, 35, 36, 37, 43, 44, 45)	• Enforcement of health ordinances (SW 2)		• Technological solutions (HI 6, 7)	• Transportation energy use impacts (T 30)
Waste		• Reduced carbon emissions (Structure Map theme)	• Emergency preparedness and weather events (SW 1)		• Engagement and learning (HI 2, 3)	• Transportation Demand Management to reduce vehicle miles traveled and improve air quality (T 3, 27, 30)
Stormwater	• Encourage redevelopment by reducing stormwater infrastructure barriers (EH 4)	• Adaptive reuse of historic structures (LIV 16, 17)	• Emergency management and hazardous materials (SW 1)		• Forge partnerships and collaborate regionally (HI 4)	• Transportation Demand Management to reduce greenhouse gas emissions (T 27, 30)
Water Resources	• Innovation in water industry cluster (EH 2)	• Adequate public facilities with development (LIV 4)	• Emergency management and flooding (SW 1)	• Multi-purpose lands (CPR 5)	• Engagement and learning (HI 2, 3)	• Green streets (T 24)
		• Adequate public facilities with development (LIV 4)		• Untreated water for irrigation in appropriate areas (CPR 4)	• Forge partnerships and collaborate regionally (HI 4)	
		• Water efficiency and conservation			• Engagement and learning (HI 2, 3)	
					• Forge partnerships and collaborate regionally (HI 4)	



## Accountable Implementation

- Timeframes and responsibilities
- Departmental buy-in
- Coordination with capital program and operating budget
- Public and private sector partners / champions
- Metrics / indicators of success
- Public involvement
  - Measure progress and communicate results
  - Recognize milestones to maintain community support

Short Term Projects		Project Type	Applicable System Strategies	Lead Agency	Partnerships	Funding Source
ST-1	Create and implement neighborhood strategic plans	Planning / Program	HDC-1, HDC-2, HDC-3, HDC-4, HDC-5, HDC-6, HDC-7, HDC-8, HDC-9, NI-1, NI-2, NI-3, NI-4, NS-1, NS-2, NS-3, NS-4, NS-5, NS-6, NS-7	Albany Dept. of Development and Planning	CDRPC, SUNY, neighborhood associations	Existing funding
ST-2	Prepare a comprehensive	Regulatory	LU-2, LU-3, UD-1, ARCH-1, ARCH-2.	Albany Dept. of Develop-	Neighborhood associations, Mayor's Office of	NYS Community Development

## Scorecard for Union County, PA Comprehensive Plan: *Cultivating Community*

	Low	Moderate	High
Livable Built Environment			x
Harmony With Nature			x
Resilient Economy			x
Interwoven Equity		x	
Healthy Community			x
Responsible Regionalism		x	
Authentic Participation			x
Accountable Implementation			x



**Location:** Central Pennsylvania

**Governmental Structure:** County Planning Commission; municipalities have land use regulatory authority

**Population:** 43,640 (2008 Census Estimate)

**Largest Municipality:** Lewisburg (population 5,454)

**Year Plan Adopted:** 2009

## Scorecard for Philadelphia 2035 Comprehensive Plan

	Low	Moderate	High
Livable Built Environment			x
Harmony With Nature			x
Resilient Economy			x
Interwoven Equity			x
Healthy Community			x
Responsible Regionalism			x
Authentic Participation			x
Accountable Implementation			x



**Location:** Population and economic center of a 12-county (four-states) MSA.


**Governmental Structure:** Home Rule Charter, governed by an elected City council, with the Philadelphia City Planning Commission (PCPC) given main responsibility to prepare and implement the citywide plan; Outreach and education provided through the PCPC's City Planning Institute.

**Population:** 1.55 million in the city in 2010 (6.35 million in the greater Philadelphia area)

**Year Plan Adopted:** 2011

# Sustaining Places: The Role of the Comprehensive Plan

American Planning Association – Sustaining Places Task Force Report




**American Planning Association**

[About APA](#)
[Membership](#)
[Events](#)
[Education](#)
[Outreach](#)
[Resources](#)
[Jobs & Practice](#)
[APAPanningBooks.com](#)

*Making Great Communities Happen*


**Community**

- Community Assistance Program
- Katrina / Gulf Coast Recovery
- National Community Planning Month
- Great Places in America
- Economic Development
- City Parks Forum
- Sustaining Places Initiative**



**SUSTAIN**

The Sustaining Places Initiative is a multi-year, multi-faceted program to define the role of planning in addressing all human settlement issues relating to sustainability.



**SCHOOL OF CONTINUING STUDIES**

For leaders in

Stay tuned! *Sustaining Places: The Role of the Comprehensive Plan* will be released as a PAS Report in January 2012.

# Current Initiatives in Sustainable Communities Planning

APA Pennsylvania Chapter Annual Conference  
October 18, 2011

David Rouse, AICP, Principal

Wallace Roberts & Todd

[www.wrtdesign.com](http://www.wrtdesign.com)

215-772-1465

[drouse@ph.wrtdesign.com](mailto:drouse@ph.wrtdesign.com)

