

# Painting the Town

**GREEN**



# Green vs. Gray Infrastructure



**Green Infrastructure**



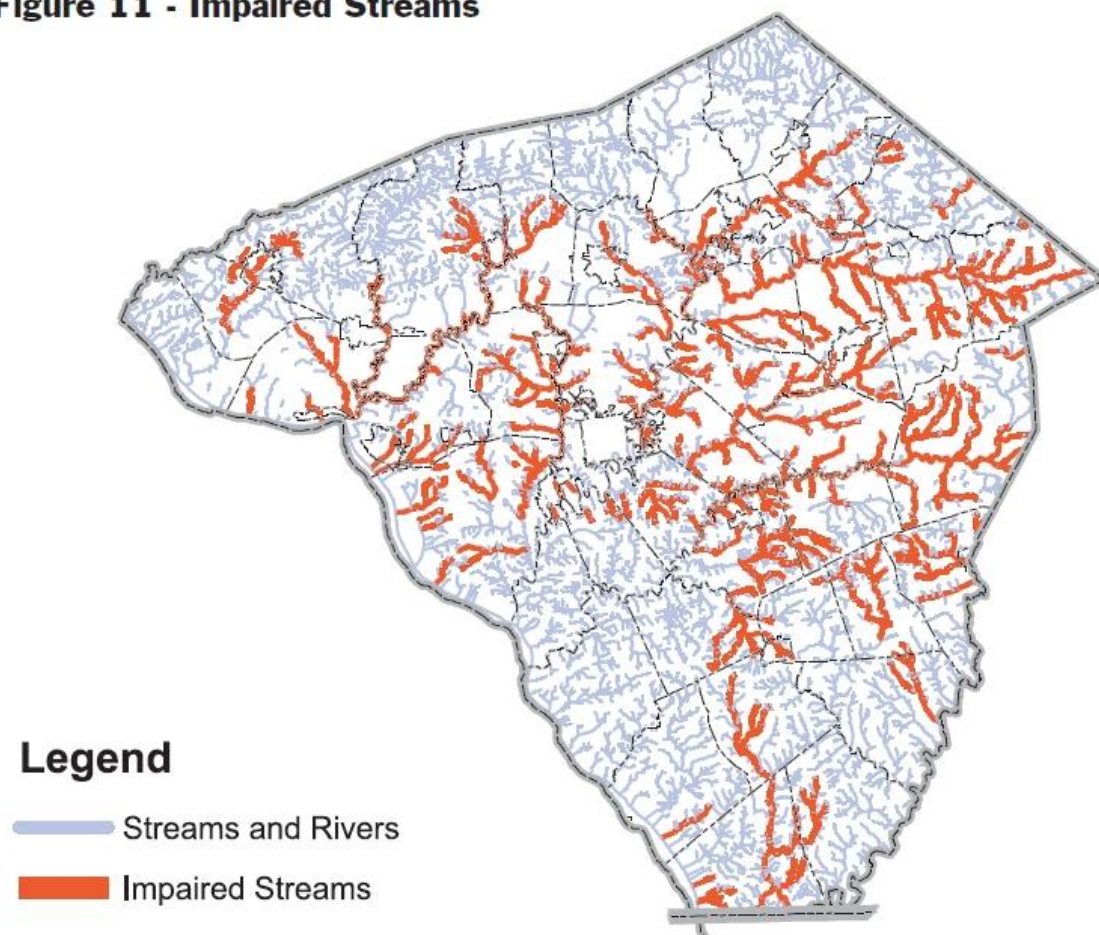
**Gray Infrastructure**



# Chesapeake Bay



**Figure 11 - Impaired Streams**





# Threats to Green Infrastructure

## Poor Agricultural Practices



# Legacy Sediments





## Urban Development and Suburban Sprawl



Greater Lancaster Area



Urban Impervious Cover



Low-density Suburban Sprawl

# ***Greenscapes***

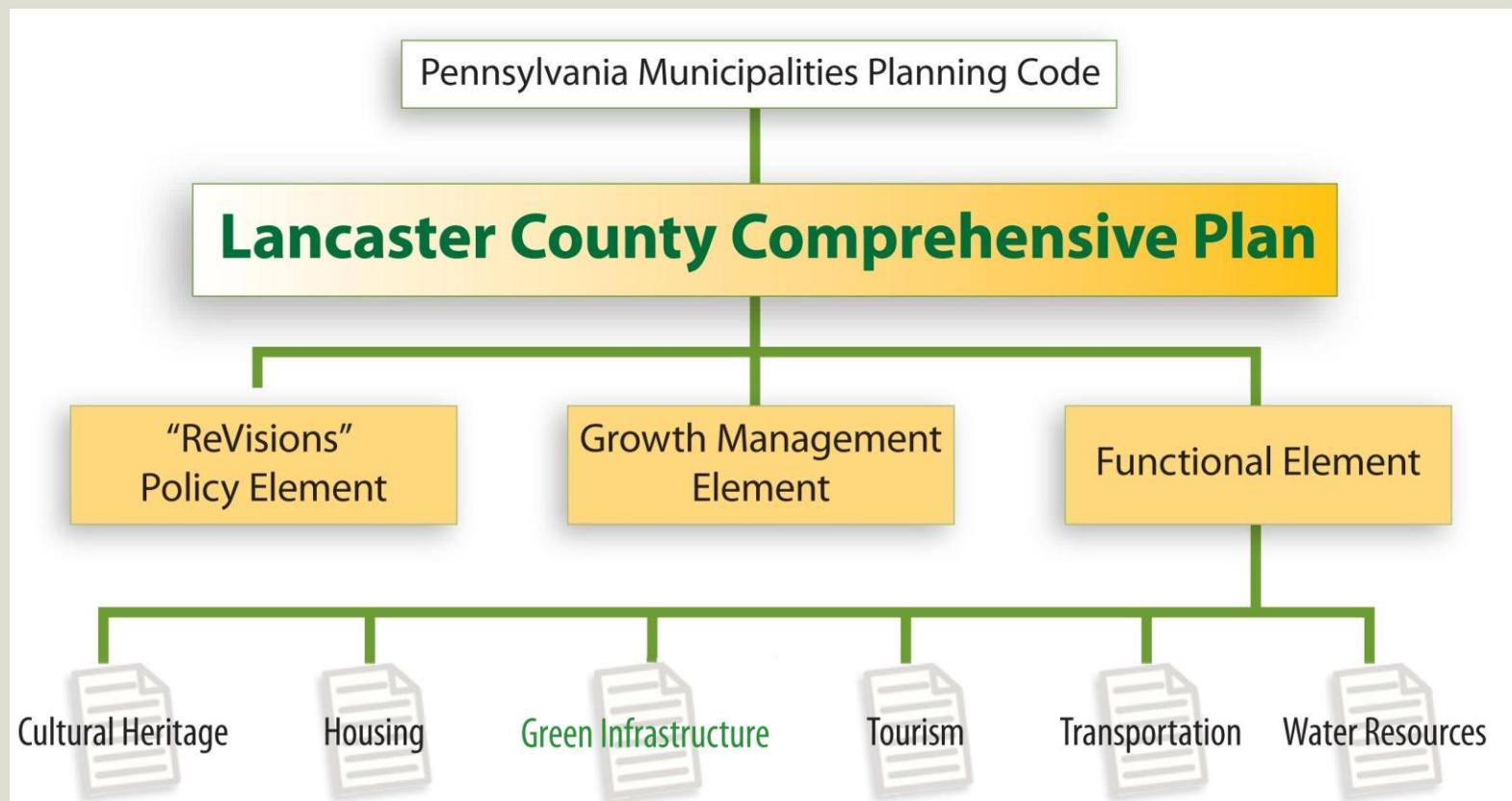


**The Green Infrastructure Element  
of the Lancaster County Comprehensive Plan**

[www.co.lancaster.pa.us/planning](http://www.co.lancaster.pa.us/planning)

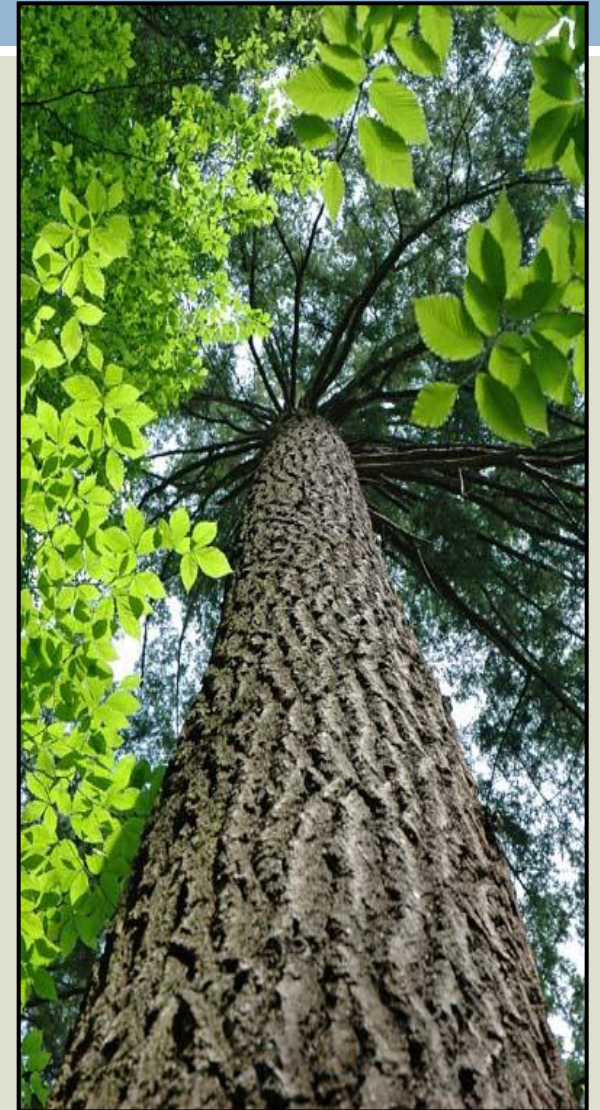


# Functional Elements of the Lancaster County Comprehensive Plan



# What is Green Infrastructure?

- Green Infrastructure is a network of **natural areas, green spaces, and greenways** in rural, suburban, and urban areas that sustains ecological functions and values and provides a broad array of benefits for the people of Lancaster County and the surrounding region:
  - **Environmental Quality**
  - **Community Health**
  - **A Sustainable Economy**





# What is the Green Infrastructure Plan Intended to Achieve?

- **Four Main Goals:**

- **Preservation**
- **Conservation**
- **Restoration**
- **Recreation**



# Green Infrastructure Examples

## *Rural Areas*



**High Quality Waterways**



**Forest Land**



**Species of Concern  
Habitat**



**Native Plants and  
Animals**



# Green Infrastructure Intervention Examples

*Urban Areas*



**Green Roofs**



**Rain Gardens**



**Porous  
Pavement**



**Street Trees**



**Rain Barrels**



**Tree Box Filters**

- ❑ Mitigate Heat Island Effect
- ❑ Reduce Stormwater Runoff
- ❑ Filter Water
- ❑ Reduce Flooding
- ❑ Increase Infiltration
- ❑ Reduce Energy Cost
- ❑ Filter Air
- ❑ Reduce Noise
- ❑ Beautification
- ❑ Support Native Species

