

**Philadelphia isn't as bad  
as Philadelphians say it is**

*ACTION PHILADELPHIA*

EKM Adv.

# DESIGN MATTERS IN EVERY COMMUNITY

1. provide **pro-bono preliminary design** services to nonprofits in the Philadelphia area
2. offer unique **volunteer opportunities** for professionals
3. promote **best practices** in community design and development



“I really believe in the mission of the Collaborative and believe professionals have an obligation to serve.”

*Michael J. Paul,  
Structural Engineer  
Duffield Associates*



COMMUNITY DESIGN  
COLLABORATIVE

**Collaborative Volunteer** | Michael J. Paul



# community gardens

intergenerational housing

preliminary code evaluation AIDS wellness center

**neighborhood parks**

site feasibility assessment

neighborhood recreation centers

business façade improvements

**churches**

streetscape improvements

preliminary cost estimates

public library outdoor garden

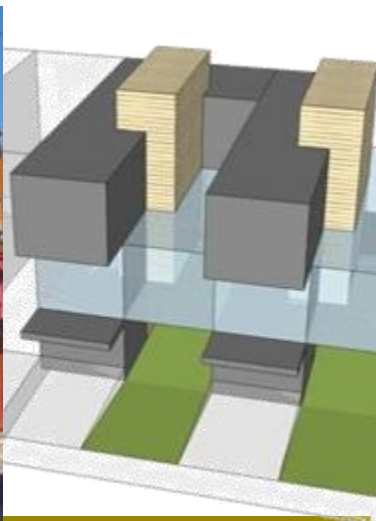
**green affordable housing**

**community health clinics**

existing conditions assessments

energy assessments

**childcare facilities** program assessments



clients | project types

COMMUNITY DESIGN  
COLLABORATIVE

“We have an opportunity and an obligation to responsibly shape our environment—not only for our clients, but for the betterment of the community.”

*Alexander Chan, Intern Architect  
Agoos/Lovera Architects*







**Predevelopment Design Services** | What's the point?

**COMMUNITY DESIGN**  
COLLABORATIVE













# CYBER VILLAGE

## SENIOR HOUSING





**“The Collaborative helps the development of professionals from entry level to principals.**

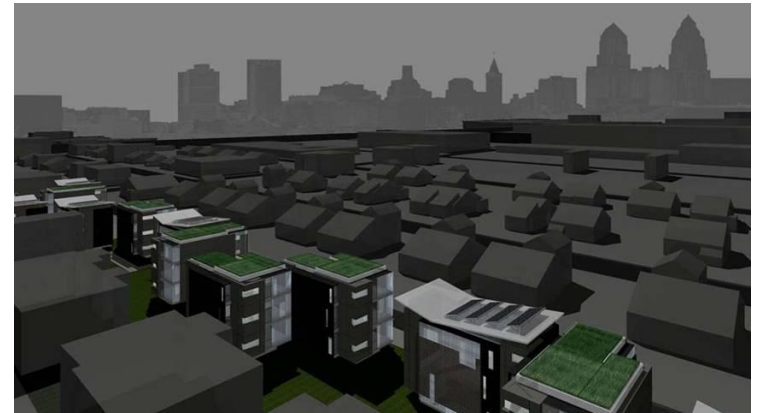
**The entire city benefits from the social network created by the Collaborative’s work.”**

***Mami Hara, Principal, Wallace, Roberts and Todd LLC***



Revitalizing urban neighborhoods  
Through innovative design







**PHFA wants to make sure that design excellence is incorporated into the developments it funds from their inception, not just as an afterthought.**

*- Brian Hudson*



- Homeownership Choice RFP
- Site Visits
- Peer to Peer Review
- Board Selection



















**Design Challenge Public Presentations**

**COMMUNITY DESIGN**  
COLLABORATIVE

# The Philadelphia Inquirer

FRIDAY, SEPTEMBER 26, 2008

Business

WWW.PHILLY.COM

## Changing Skyline

### Food for thought on supermarkets

By Inga Saffron

INQUIRER ARCHITECTURE CHIEF

If we are what we eat, then it's not surprising that our cities are shaped by things that sell what we eat. In a long absence, the neighborhood supermarket is making a comeback in urban places. Only a new array of things like the food store once knew. In a long absence, the neighborhood supermarket is making a comeback in urban places. Only a new array of things like the food store once knew. In a long absence, the neighborhood supermarket is making a comeback in urban places. Only a new array of things like the food store once knew.

fects with real clients. Even if none of the three gets built, the design ever-estates with nearly invisible to motorists pedestrians traveling on Avenue. In any case, that

# The Philadelphia Inquirer

SUNDAY, SEPTEMBER 6, 2009

Business

WWW.PHILLY.COM

## A new use for industrial sites: Industry

By Diane Mastrulli

PHILLY.COM

Philadelphia's old industrial buildings, like those in many cities in recent decades, have enjoyed a renaissance, as anything but industrial buildings. What were breweries, clothing stores have been turned into hip office buildings and condominiums, airy

urban areas are good," and that roughly 20 percent of the city is industrial. "I think Philadelphia has the best chance of any city to pull off an industrial revival," she said. "Philadelphia has it in its bones."



The Globe Dye Works in Frankford contains 160,000 square feet of floor space. Roughly, it has not been renovated.

Among the various city building community says Datto said, is educating about what is meant by current terms. "It's not this horrible going to have your house not and grime," he said. "It's about the box of but they're not others much anymore. It's put and managed."

Overall, Datto said, industrial facilities tend to need less space and are more likely to be high-margin, custom-made existing industrial might even be recommended by Miller said.

## Use for old factories: Industry

### A drive is under way to revive Phila.'s manufacturing power on a small scale.



The Gloucester Design Collaborative, a volunteer group of designers, architects, and artists, is leading the Philadelphia Industrial Development Corp. (PIDC) on an initiative to improve job opportunities in the city's industrial sector. The group is working on a small scale, focusing on the reuse of old industrial buildings.

## the agenda

### [Your to-do list, no matter what you're doing]



CRANE ARTS

LOFTY ASPIRATIONS Architects envision more than condos when they look at Philly's industrial bones. By Andrew Thompson

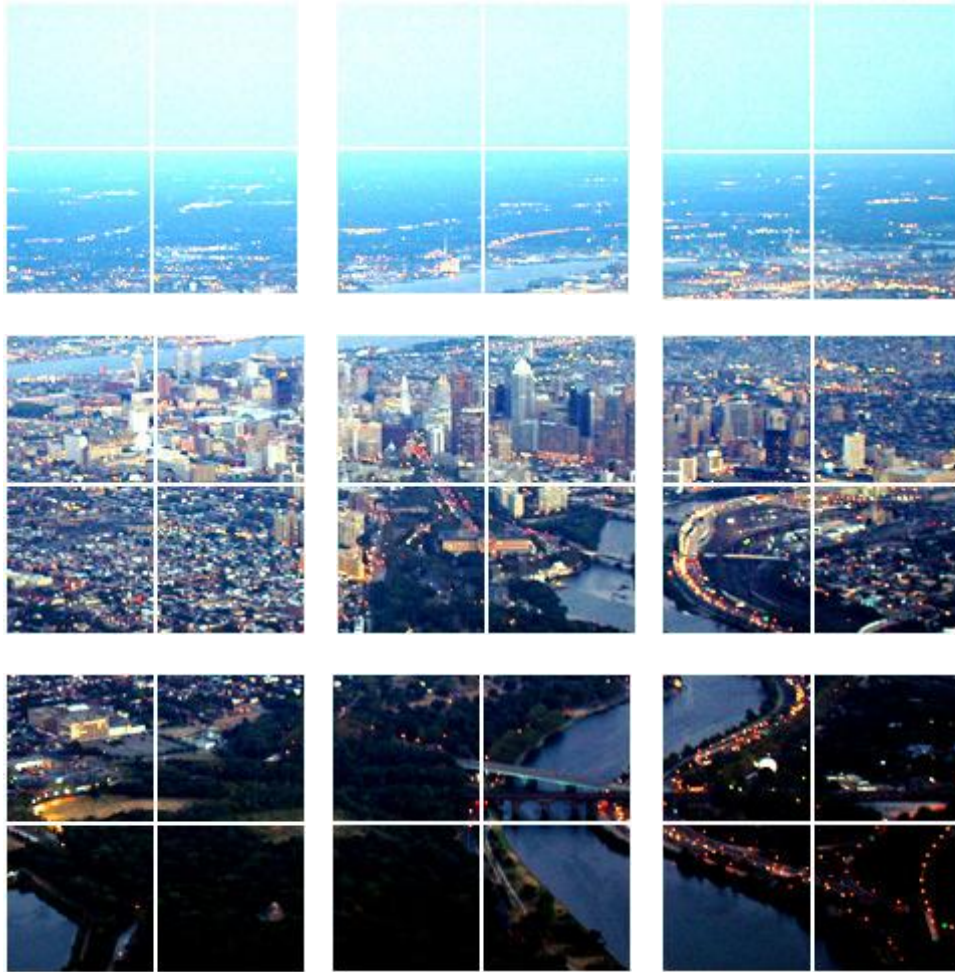
"We have all this industrial heritage, but they're all white stone and brick," says Miller. "What we have seen when it comes to a lot of industrial sites is that they're not being used."



# GLASSPHEMY

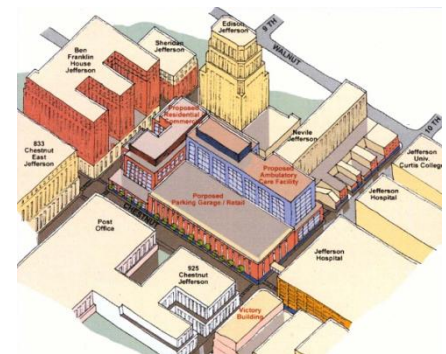
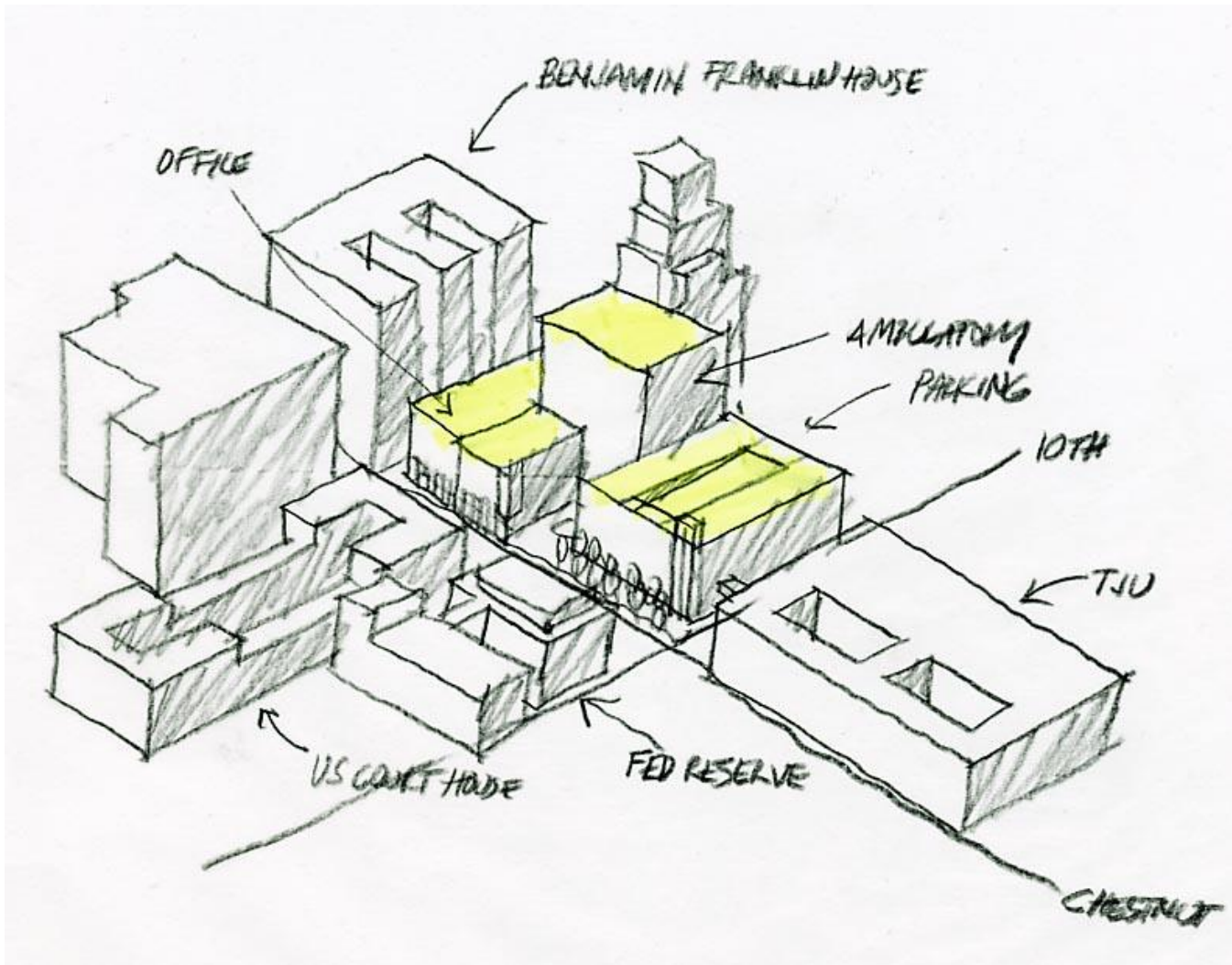
PHILADELPHIA





## DESIGN ADVOCACY GROUP OF PHILADELPHIA





## ADVOCACY ISSUES - JEFFERSON GARAGE

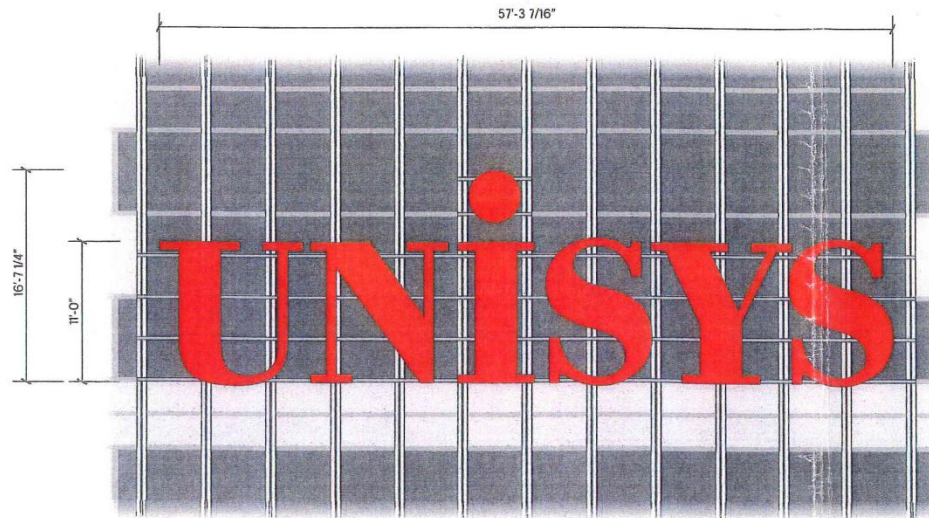


## ADVOCACY ISSUES - CENTRAL DELAWARE WATERFRONT

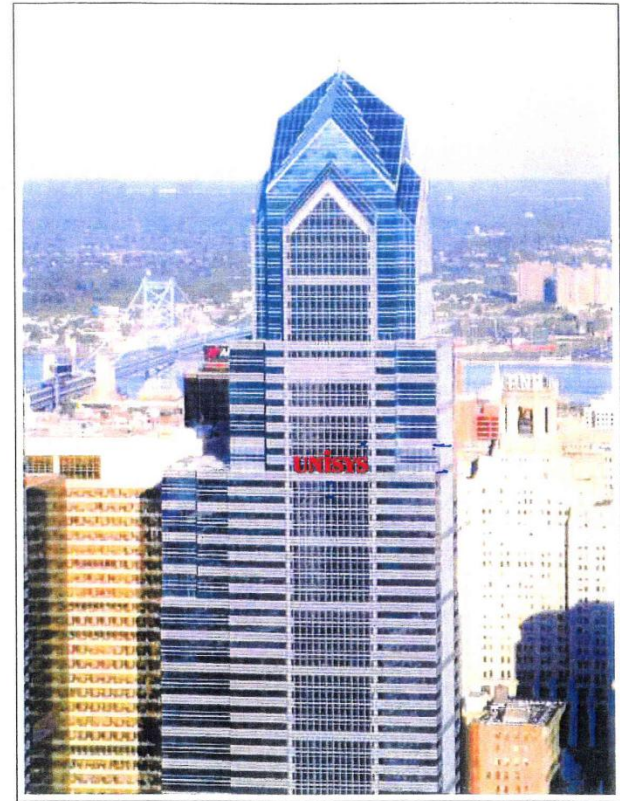




## ADVOCACY ISSUES - SIDEWALK CAMPAIGN



CHANNEL LETTERS - CL132  
SCALE: 1/8" = 1' 0"



WEST ELEVATION VIEW  
SCALE: NTS







ADVOCACY ISSUES - NEW FAMILY COURT



ADVOCACY ISSUES - OLD FAMILY COURT

# URBN CENTER

for

The Antoinette Westphal College of  
Media Arts and Design



Please join us for a design presentation by Meyer Scherer & Rockcastle Ltd. for the URBN Center at 3501 Market St. & 3401 Filbert Streets. The original building designed by Venturi, Scott Brown & Associates played an important role in the history of Architecture with its iconic facade.

Design Presentation

March 19th, 2010

2pm



## ADVOCACY ISSUES - ISI BUILDING





## ADVOCACY ISSUES - BARNES FOUNDATION

# COMMUNITY DESIGN COLLABORATIVE



Center for Architecture  
1216 Arch Street, First Floor  
Philadelphia, PA 19107  
215.587.9290

Beth Miller, Executive Director  
[beth@cdesignc.org](mailto:beth@cdesignc.org)

[cdesignc.org](http://cdesignc.org)  
[infillphiladelphia.org](http://infillphiladelphia.org)

*Strengthening neighborhoods through design*

COMMUNITY DESIGN  
COLLABORATIVE