

Pennsylvania Chapter of APA

2009 Awards Ceremony

Investing in a Sustainable Future

King of Prussia, Pennsylvania

Pennsylvania Chapter of APA

Awards Committee

Brian O'Leary, AICP, Chair

Robert Behling

Cindy Campbell

Graciela Cavicchia, AICP

Denny Puko

Brandi Rosselli, AICP

Vaughn Stebbins, AICP

Pennsylvania Chapter of APA

Congratulations to Our New AICP Members

Peter Anderson	Christopher Jurek	Kelley Sander
Peter Angelides	David Kanthor	Travis Schenk
Megan Driscoll	Charles Leasure	Peter Spiszak
Jessica Fieldhouse	Adam McGurk	Lisa Thomas
Mary Gattis-Schell	Maureen O'Neill	Deborah Tollett
Joel Graeff	Susan Peters	Joshua Warner
Jennie Granger	Joseph Price	Mindy Watts
Richard Heimbach	Rebecca Ross	Andrew Wright
	Brandy Rotz	

Pennsylvania Chapter of APA

Daniel Burnham

Award

For A Comprehensive Plan

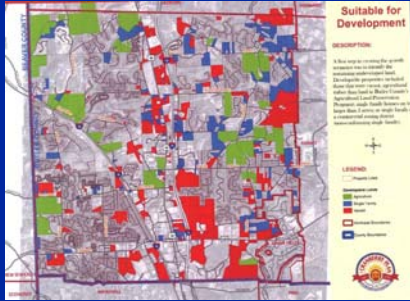
*The Cranberry Plan:
Shaping Cranberry Township*



Vision and Goals



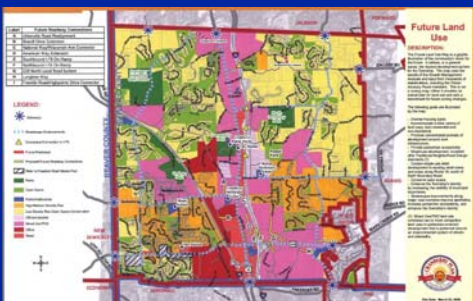
Extensive Public Participation



In Depth Analysis of Existing Conditions



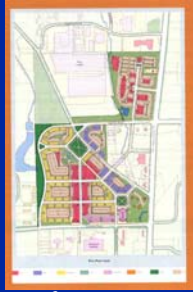
Analysis of Alternative Growth Scenarios



Growth Management Plan



Mixed, walkable land uses are encouraged



The plan provides guidance for creating a visual and physical identity for Cranberry

Pennsylvania Chapter of APA

Daniel Burnham

Award

For A Comprehensive Plan

*The Cranberry Plan:
Shaping Cranberry Township*

Pennsylvania Chapter of APA
Planning Excellence

Award

Best Practice

Montgomery County Planning Commission
Residential Office District



Overall Goal



Compares Alternative Development Scenarios



Class One Conditional Use

- existing home converted to office
- 14,000 square foot minimum lot size
- maximum building footprint of 2,000 square feet
- maximum impervious coverage of 50%

Class Two Conditional Use

- new office building
- 40,000 square foot minimum lot size
- maximum building footprint of 4,000 square feet
- maximum impervious coverage of 40%

Explains Dimensional Standards



Innovative Driveway Design Standards

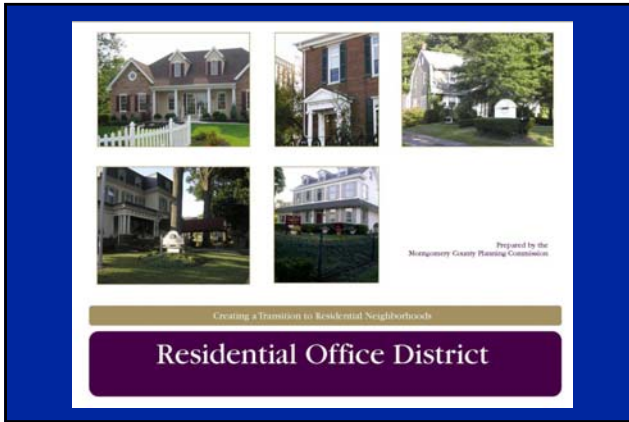


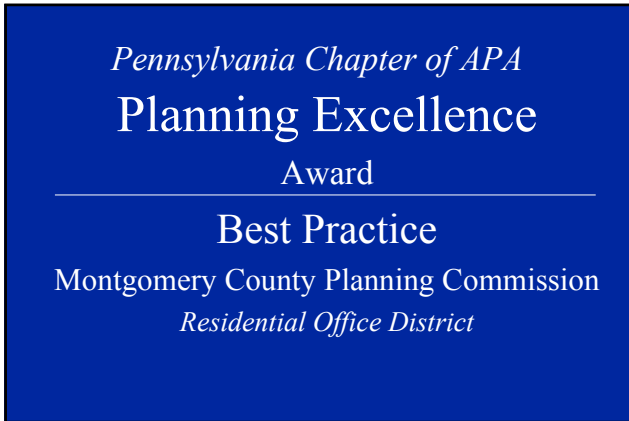
Buildings should fit in ...

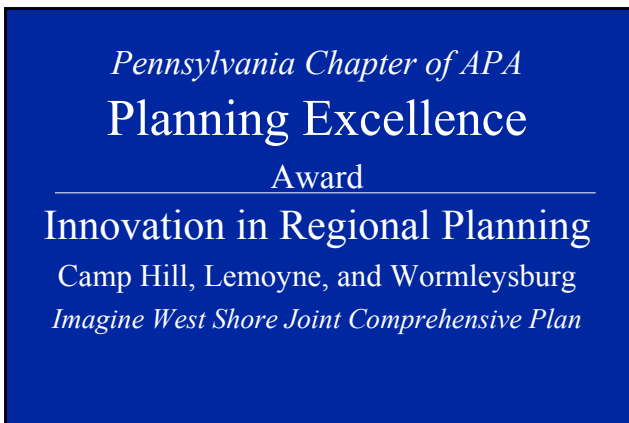


... instead of standing out.

Building Design Standards









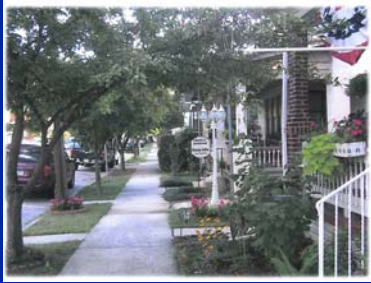
Three Boroughs Planning Together



Status of the Region



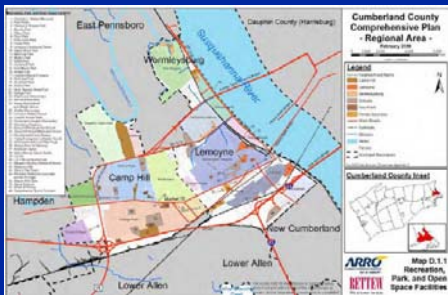
Key Strategies Identified – Land Use



Key Strategies Identified - Revitalization



Key Strategies Identified - Transportation



Recreation, Parks, and Open Space



Implementation – Creation of West Shore Collaborative

Pennsylvania Chapter of APA
Planning Excellence

Award

Innovation in Regional Planning
Camp Hill, Lemoyne, and Wormleysburg
Imagine West Shore Joint Comprehensive Plan

Pennsylvania Chapter of APA
Planning Excellence

Award

For Public Outreach
Bucks County Planning Commission
*Watershed Protection Education
and Community Awareness Project*



Bus Tour of Best Management Practices



Agricultural BMPs



Ecological Restoration



Innovative Wastewater Reuse



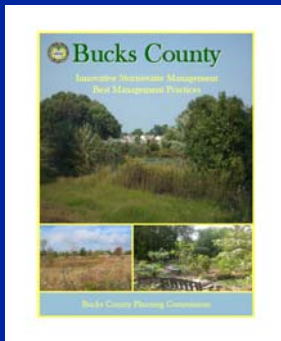
Riparian Buffer Protection



Naturalized Stormwater Control Systems



Press Coverage



Educational Brochure

Pennsylvania Chapter of APA
Planning Excellence
Award

For Public Outreach
Bucks County Planning Commission

*Watershed Protection Education
and Community Awareness Project*

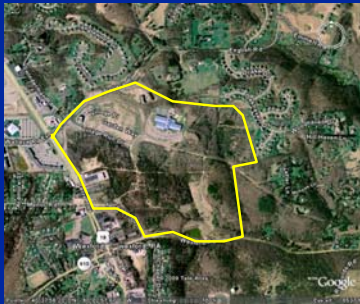
Pennsylvania Chapter of APA
Planning Achievement

Award

For a Hard-Won Victory

The Township of Pine

The Village at Pine



300 Acres of Land Purchased in the 1970s

Desire by Developer to:

- *Build a Mall*
- *Flatten the Hills*
- *Fill the Valleys*
- *Relocate Streams*



The Village at Pine Mixed Use Development



Extensive Landscaping and Environmental Sensitivity



Walkable Streetscape



Pedestrian Plaza



Central Gathering Place and Recreation



Attractive Commercial Architecture



Appealing Residential Neighborhood



Pennsylvania Chapter of APA
Planning Achievement
Award

For a Hard-Won Victory
The Township of Pine
The Village at Pine

Pennsylvania Chapter of APA Journalism Award

Jeffrey Barg

Planetizen Interchange Blog



Planning as a Career



Urban Design



Being a Planning Student

Pennsylvania Chapter of APA Journalism Award

*Jeffrey Barg
Planetizen Interchange Blog*

Pennsylvania Chapter of APA Student Project Award

*University of Pittsburgh
Capstone Seminar in Planning
Neighborhood and Community
Indicator Systems*

The Paper:

- Examines the democratization of data
- Reviews appropriate literature
- Analyzes data for the Turtle Creek COG
- Makes recommendations

The image shows a page from a report with a table on the left and text on the right. The table has several columns, including 'Area', 'Population', 'Income', and 'Education'. The text on the right discusses the data and includes a legend with categories like 'High Income' and 'Low Income'.

Data Analysis



GIS Analysis of Data

Strong Technical Capacity/ Information Content			Weak Technical Capacity/ Information Content		
Churchill	Edgewood	Forest Hills	Braddock	Chalfant	E. McKeesport
Monroeville	Plum	Rankin	E. Pittsburgh	Pitcairn	Turtle Creek
Swissvale	Penn Hills	Wilkins	N. Braddock	N. Versailles	Wall
Wilkinsburg	Wilmerding				

*Policy Recommendations on
Community Information Systems*

*Pennsylvania Chapter of APA
Student Project*

Award

University of Pittsburgh
Capstone Seminar in Planning
*Neighborhood and Community
Indicator Systems*

*Pennsylvania Chapter of APA
Planning Leadership*

Award

For an Elected Official Planning Advocate

Donald Cunningham

John Harris

Pike County Commissioners

Jeffrey Propps

Donald Cunningham



Economic Development

Donald Cunningham



Open Space and Trails

Donald Cunningham



Agricultural Preservation

Donald Cunningham

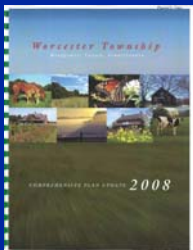


The Environment

Donald Cunningham

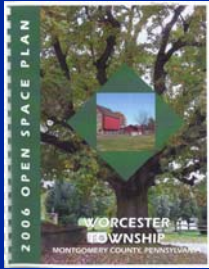


John Harris



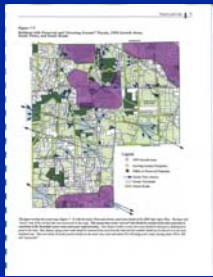
Township Comprehensive Plan

John Harris



Township Open Space Plan

John Harris



Land Conservation Ordinance

John Harris



Pike County Commissioners



Support Planning

Pike County Commissioners



Support Open Space Preservation

Pike County Commissioners



Richard Caridi, Harry Forbes, and Karl Wagner

Jeffrey Propps



Washington Township, York County

Jeffrey Propps



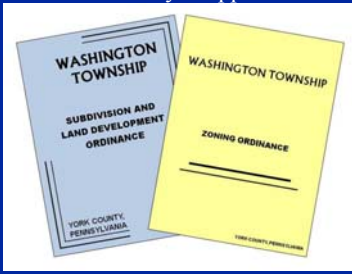
New Comprehensive Plan

Jeffrey Propps



Extensive Public Involvement

Jeffrey Propps



*Implementation through Ordinance
Changes*

Jeffrey Propps



Pennsylvania Chapter of APA
2009 Awards Ceremony

Investing in a Sustainable Future
King of Prussia, Pennsylvania
