



587 James Drive
Harrisburg, PA 17112

Non Profit Org.
U.S. Postage
PAID
Harrisburg, PA
Permit No. 561



American Planning Association
Pennsylvania Chapter

Making Great Communities Happen

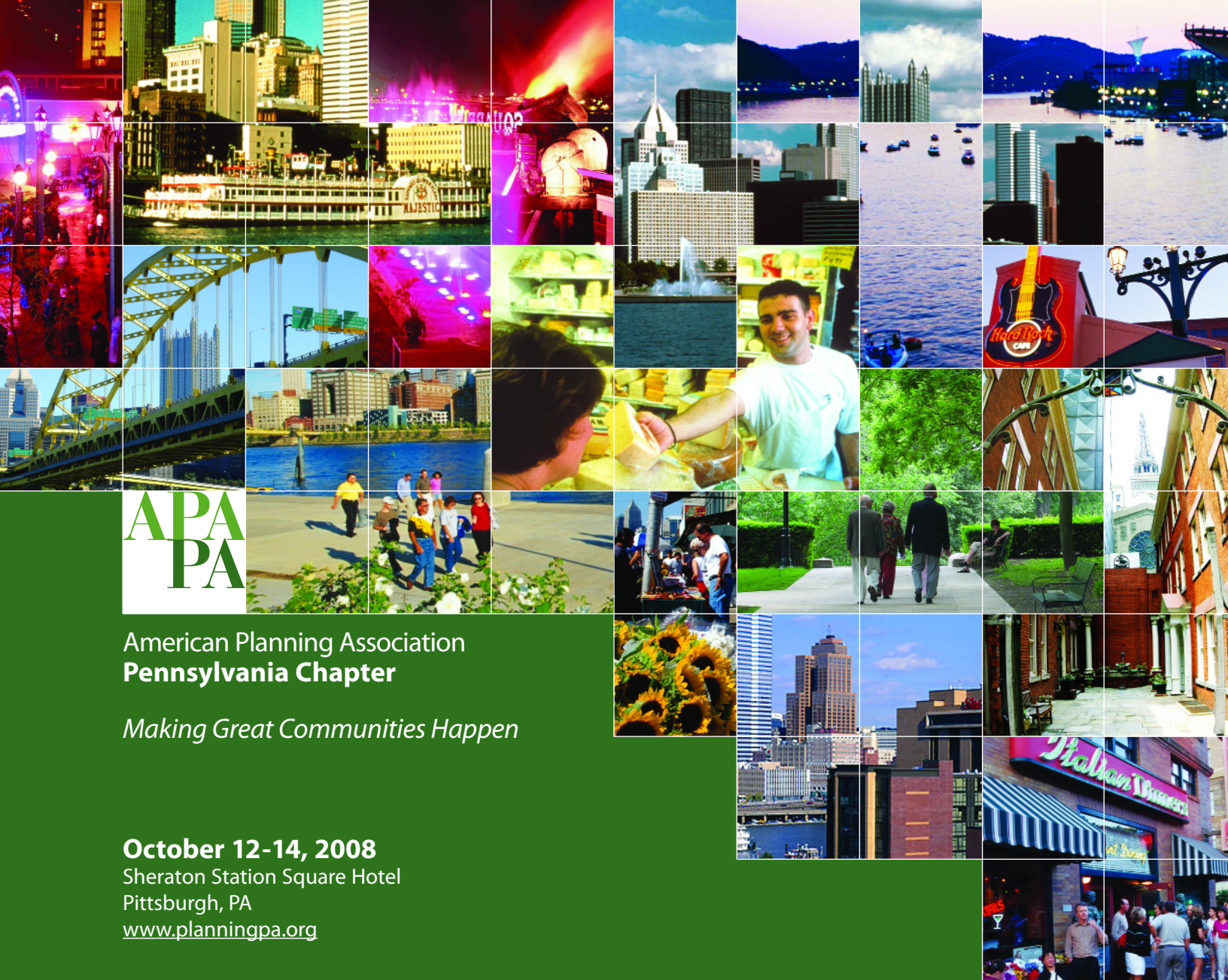
October 12-14, 2008

Sheraton Station Square Hotel

Pittsburgh, PA

www.planningpa.org

Cities of the past: America's places of the future



American Planning Association Pennsylvania Chapter

Making Great Communities Happen

October 12-14, 2008

Sheraton Station Square Hotel
Pittsburgh, PA
www.planningpa.org

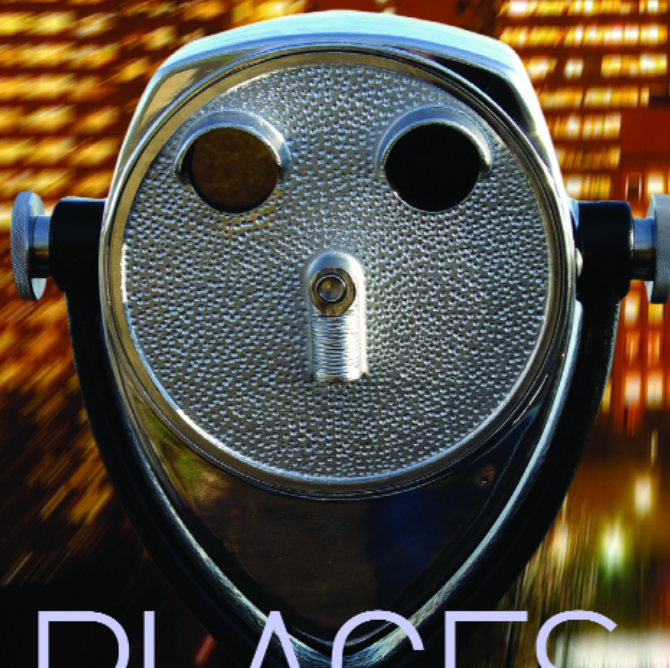
- Welcome Reception at the **Manchester Craftsmen's Guild**
- Opening Session with Motivational Speaker **Will Cross**
- Two full days of Educational Sessions
- Pitkin Lecture with **The Honorable Ron Littlefield, AICP**
- PA Chapter Awards, Poster Sessions and Mobile Tours
- Monday Evening Reception in the **Grand Concourse**
- Plenary Session with **Dr. Edward K. Muller**
- Closing Plenary — **Legal Update**
- PPA Open Golf Outing — **Alcoma Golf Course**

2008

Annual Conference

Cities of the past: America's places of the future

MASTER OF ARTS TOURISM PLANNING AND DEVELOPMENT PROGRAM



GO PLACES

100% ONLINE

Master of Arts Tourism Planning and Development Program

This 16-24 month* graduate studies program can prepare you for an exciting career in the ever-growing fields of tourism research, planning and development. As there is no classroom attendance requirement, the program fits comfortably into any busy schedule.

Although the program is designed with the demands of today's busy world in mind, we have made no exceptions on our commitments to the highest standards of academic quality. As such, California University of Pennsylvania (Cal U) is an affiliate member of the World Tourism Organization's Education Council, which is comprised of worldwide leading tourism education institutions. The World Tourism Organization is the leading international organization in the field of tourism.

Furthermore, the Pennsylvania Association of Convention and Visitors Bureaus, the association that represents officially designated destination management organizations within Pennsylvania, has officially endorsed Cal U's tourism education programs and has recognized the University as its exclusive education partner.

Learn more about Cal U's Master of Arts Tourism Planning and Development program by visiting our web site, www.cup.edu/go/tourism or by calling 866-595-6348.

* The program is designed for a student to complete in 16-24 months.
Changes to the proposed schedule can affect the program's duration.

GLOBAL ONLINE



California University of Pennsylvania
Building Character. Building Careers.

www.cup.edu/go/tourism

A proud member of the Pennsylvania State System of Higher Education.

CALU



American Planning Association
Pennsylvania Chapter
2008 Annual Conference

PLANNING COMMITTEE

COMMITTEE CO-CHAIRS:

Joy M. Wilhelm, AICP

Mackin Engineering Company

Brandi Rosselli, AICP

McCormick Taylor

Lew Villotti

Southwestern Pennsylvania Commission

COMMITTEE:

Bruce Betty, AICP

Town of McCandless

Chris Blackwell

Penn Hills Planning Department

Phil M. Brown, AICP

Gannett Fleming, Inc.

Allen Cohen, AICP

Pashek Associates

Andrew Dash

Marshall Township

Scott Dellett, AICP

Municipality of Monroeville

Peggy Drake

Alex Graziani, AICP

Smart Growth Partnership of Westmoreland County

Lynn Heckman

Allegheny County Economic Development

Ethan Imhoff

Borough of Hollidaysburg

Dennis Martinak, AICP

Mackin Engineering

Amy McKinney

Lawrence County Planning Department

Tiffany Peterson, AICP

Michael Baker Jr., Inc.

Andrew JG Schwartz, AICP, RLA

Environmental Planning and Design, LLC

Kevin G. Smay

Community College of Allegheny County

Robert Smith, AICP

Crown Castle USA Inc

Sarah B. Trbovic, AICP

URS Corporation

Molly Wirick

PA Chapter Program Coordinator

David E. Wohlwill, AICP

Port Authority of Allegheny County



PHOTOS: VISIT PITTSBURGH

Welcome to Pittsburgh...

2008 PA Chapter of the American Planning Association Annual Conference

ON BEHALF OF THE 2008 CONFERENCE COMMITTEE of the Pennsylvania Chapter of the American Planning Association, we welcome you to the City of Pittsburgh. Celebrating the **250th anniversary** of its founding and, continuing to reinvent itself, Pittsburgh exemplifies the logo of our conference: **Cities of the past: America's places of the future.** The theme and location for the 2008 Conference is especially fitting this year and should serve as a reminder that planners across the Commonwealth work to preserve our heritage while preparing communities to move into the future.

The City of Pittsburgh and her surrounding communities are experiencing yet another transformation that perpetuates a pattern of social and economic renewals. Ours is a region that has been reborn many times beginning first as a strategic military location during the Revolutionary War, serving as the gateway for westward expansion and a center for commerce during the development of our nation, and eventually becoming known as the Steel Town that built America in the Twentieth Century. Today, our cultural and economic renaissance is centered on the arts and technology, propelled by world-class educational institutions that employ more than 117,000 people in 13 counties. Pittsburgh leads the nation in automation technology for government and businesses.

We invite you to experience the richness of our history, enjoy our vibrant social life, and encourage you to immerse yourself in the Conference itself, which offers a myriad of workshops and events to increase your knowledge and awareness of sound land use practices and policies.

Sincerely,

Co-Chairs of the 2008 Conference Committee:

Joy M. Wilhelm, AICP

Brandi Rosselli, AICP

Lew Villotti

Our region will go where public transit takes it.

Public transit makes a difference everyday.

**Port
Authority**

CONNECT9

PortAuthority.org

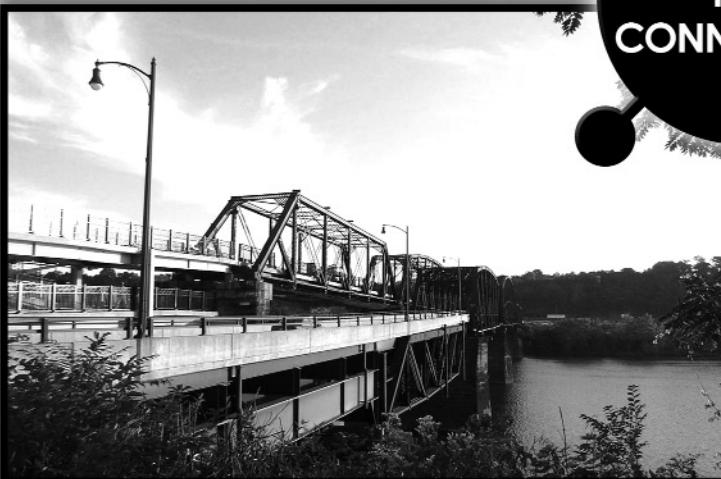
Places



People



**MAKING
THE
CONNECTION**



Planning / Environmental Excellence



Pennsylvania

**PB PARSONS
100 YEARS® BRINCKERHOFF**

**Community & Regional Planning • Alternative Analyses
Transportation Planning • Public Involvement • Land Use Planning
Environmental Studies & Permits**

4 Penn Center
1600 JFK Boulevard
Suite 700
Philadelphia, PA 19103
215-561-1900

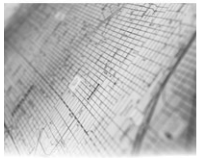
3314 Market Street
Suite 204
Camp Hill, PA 17011
717-412-4795

Four Gateway Center
Suite 1305
Pittsburgh, PA 15222
412-281-9900

Proud to Support the Pennsylvania Planning Association 2008 Conference

LOCAL DEVELOPMENT DISTRICTS

*Progress Through
Regional Cooperation*



**Regional
Planning**

**Energy
Efficiency**

**Transportation
Planning**

**Broadband
Deployment**

LDDAPA

For more information,
please visit www.paldd.org



**Many thanks to our
generous sponsors who
support this conference!**

Diamond Sponsors

California University of Pennsylvania
Tourism Studies
Temple University Ambler College,
Department of Community &
Regional Planning

Platinum Sponsor

URS Corporation

Gold Sponsors

Indiana University of Pennsylvania
Johnson, Mirmiran & Thompson, Inc.
Local Development Districts Association
Mackin Engineering
Port Authority of Allegheny County
Southwestern Pennsylvania Commission

Silver Sponsors

DMJM Harris
Herbert, Rowland & Grubic, Inc.
Kennedy & Associates
Maguire Group, Inc.
McCormick Taylor, Inc.
Michael Baker, Jr., Inc.
Pennoni Associates, Inc.
Perkins Eastman
Southwest Section of the PA Chapter of the
American Planning Association
University of Pennsylvania Penn School of Design

Exhibitors as of July 1

California University of Pennsylvania
Environmental Planning & Design, LLC
Gannett Fleming, Inc.
Johnson, Mirmiran & Thompson, Inc.
Larson Design Group
Michael Baker Jr., Inc.
PA DCED Governor's Center for Local Government Services
PA Department of Conservation & Natural Resources
Pashek Associates
Smart Growth Partnership of Westmoreland County
Temple University Ambler College
URS Corporation

*To become a sponsor, an exhibitor, or an advertiser in the Final Program,
please contact the PA Chapter office at 717-671-4510, or obtain infor-
mation on our Web site at www.planningpa.org.*

Mackin

Planning Services

- Comprehensive Planning
- Transportation Corridor Planning
- Recreation, Parks, & Open Space Planning
- Ordinance Review & Development
- Greenways Planning
- Trail Feasibility Studies & Design



Pittsburgh Office:
RIDC Park West
117 Industry Drive
Pittsburgh, PA 15275
Ph: 412.788.0472

Harrisburg Area Office:
Yellow Breeches Office Center
175 Limekiln Road; Suite 300
New Cumberland, PA 17070
Ph: 717.774.8900



imagination. innovation. involvement. impact.



Pittsburgh, PA

1550 Coraopolis Heights Road
Suite 440
Moon Township, PA 15108
412.375.5100 phone
412.375.5110 fax

York, PA

220 St. Charles Way
Suite 200
York, PA 17402
717.741.1600 phone
717.741.9100 fax

Philadelphia, PA

1515 Market Street
Suite 1910
Philadelphia, PA 19102
267.256.0300 phone
267.256.0395 fax

Other Offices throughout the Eastern United States

Transportation
Planning & Design
Transit Planning & Design
Urban Revitalization
Land Use Planning
Traffic Engineering
Water Resources
Landscape Architecture
Structural Engineering
Construction Management
Environmental/Facilities
Services
Water/Wastewater
Surveys
GIS
Information Technology

Leading the Way.



DVRPC is
proud to sponsor
**The 2008 Annual
Conference of the
PA Chapter of the
American Planning
Association!**

Our mission is to shape a vision for the future growth of the Delaware Valley region, encompassing Bucks, Chester, Delaware, Montgomery and Philadelphia counties in PA, and Burlington, Camden, Gloucester and Mercer counties in NJ.

We Serve as the Region's Resource For:

Bicycle & Pedestrian Plans, Census / Demographic / Economic Data, Community & Neighborhood Plans, Corridor Studies, Current & Historic Aerial Imagery, Environmental Studies, Geographic Information Systems, Freight & Aviation Planning, Highway / Transit / Smart Growth Initiatives, Mobility Alternatives, Traffic Data & Travel Time Studies, and Grassroots Consensus-Building



DELAWARE VALLEY REGIONAL PLANNING COMMISSION

**DVRPC, 8th Floor
190 North Independence Mall West / Philadelphia, PA 19106-1520
Phone: 215.592.1800 / Fax: 215.592.9125 / www.dvrpc.org**



MURRYSVILLE, PA
724.327.3760

TUSTIN, CA
714.505.6360

SAN DIEGO, CA
619.325.0290

PLANNING • DESIGN • ENVIRONMENTAL • GRAPHICS

WWW.TBPLANNING.COM



Baker

Urban Planning / Design
Landscape Architecture
Site Planning
GIS
Sustainable Design
Urban Redevelopment

Creating value by delivering innovative and sustainable solutions for infrastructure and the environment.

www.mbakercorp.com
(800) MIBAKER

PITTSBURGH BEYOND THE CONFERENCE!

Come early or stay late – enjoy all that Pittsburgh has to offer!

The Pittsburgh region offers a wide array of activities, whether you are looking for something educational or recreational.

For the most up-to-date information on what is available, you may visit www.visitpittsburgh.com.

Also, the PA Chapter web site has a list of activities highlighted by the conference planning committee.

You will find them at www.planningpa.org.

Support the Next Generation of Planners!

The price of education, along with everything else, is rising rapidly. Students in planning education programs are working even harder not only to succeed academically, but to find the resources to cover the cost of their education. **YOU CAN HELP!** We offer two opportunities this year for you to support the PA Chapter Scholarship funds — the **Spaulding Fund** and the **Pitkin Fund**.

When you register for the conference, you may choose to make a tax deductible contribution to the scholarship fund. Simply indicate the amount of the donation and include it in your payment.

When you are at the conference, please be generous with your purchase of tickets for the raffle auction. Generous donors will contribute everything from weekend get-aways to gourmet food baskets to art. Counties contribute baskets filled with wonderful and diverse offerings of their locale. Tickets will be on sale during registration, meals and breaks. Winners will be selected at the conference on Tuesday afternoon and announced prior to the final session. You will be supporting a worthwhile cause, and you may go home with some wonderful prizes!

Certification Maintenance Credits:

Application has been made to APA for approval to offer Certification Maintenance (CM) credits for most of the sessions at this year's conference. A total of **11 credits may be earned**, depending on sessions chosen.

A list of approved sessions will be posted on the PA Chapter Web site as soon as approval is received.

Courses approved by APA for CM credit are also accepted by the Commonwealth of PA for landscape architect continuing education.

Fun Run

Tuesday, October 14 – 6:30 am

Prior to a full day of sessions, workshops, and tours take in a five mile run on a small portion of the **Three Rivers Heritage Trail** right from the hotel. The Three Rivers Heritage Trail is a wonderful pedestrian trail and greenway system around Pittsburgh. Running for 37 miles along both sides of the Allegheny, Monongahela and Ohio Rivers, it is an almost complete public route for cyclists, walkers, runners, and, in some places, rollerbladers. We will run along several sections of the trail leaving from the Sheraton Station Square and completing a five mile loop. This may sound far, but it is **flat and easy** passing by shops, restaurants, and other sites that we will point out along the way. If you would prefer to ride, **bicycles are available** for free from the **Friends of the Riverfront**, established to create and dedicated to the continued expansion of the Three Rivers Heritage Trail. They advocate for and build multi-use trails, parks and continuous public access along our three rivers through active partnerships with communities, public leaders, citizens and organizations from around the region.



PLANNERS AND LAND USE CONSULTANTS

- ❖ Site Analysis and Feasibility
- ❖ Master Planning
- ❖ Site Planning
- ❖ Zoning and Land Use Policy
- ❖ Parking Analysis
- ❖ Graphic Exhibits
- ❖ Project Management

DESIGNING GREAT COMMUNITIES SINCE 1990

29 MAIN STREET HARLEYSVILLE, PA 19438
TEL: 215.513.1720 FAX: 215.513.1721 NET: LANDPLAN.COM



Partnership of Westmoreland County

A new location...

GreenForge Building
226 Donohoe Road, Suite 105
Greensburg, PA 15601

Phone: 724-552-0118

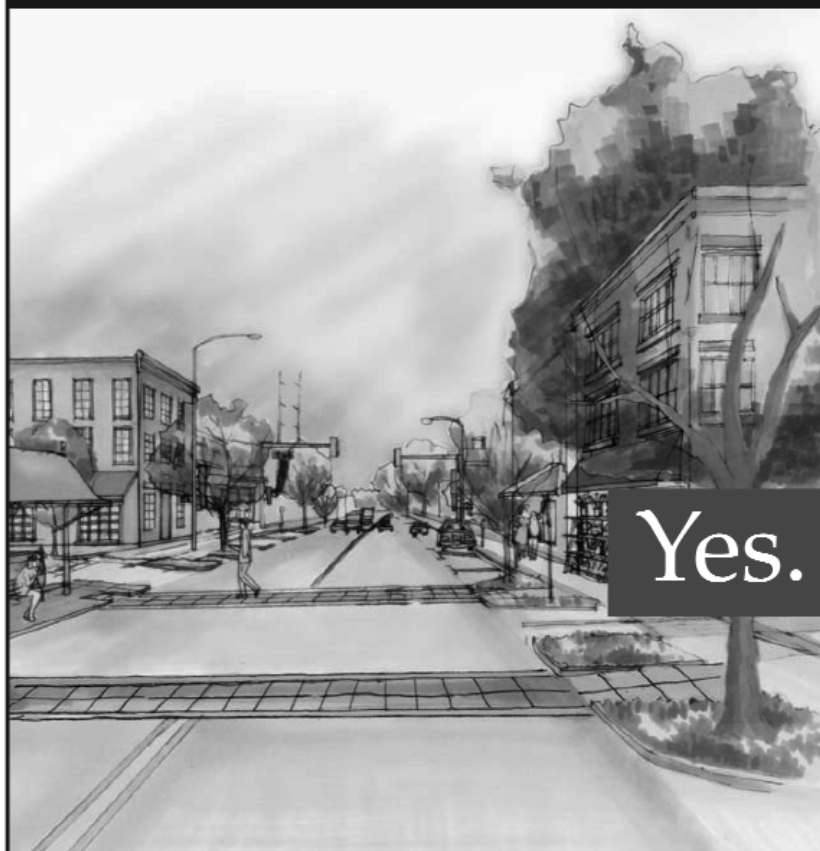
Fax: 724-837-7613

Email: contact@smartgrowthpa.org

...the same Smart Growth Partnership

www.smartgrowthpa.org

IMPROVED GROWTH STRATEGIES



Since 1946, McCormick Taylor's community of transportation engineers, planners, environmental specialists and communication experts have responded to our clients' most challenging and complex projects by saying, "Yes. We can do that."

Yes. We can do that.

**McCormick
Taylor**
Engineers & Planners
Since 1946

Two Commerce Square
2001 Market Street, 10th Floor
Philadelphia, PA 19103
Phone: 215-592-4200
www.mccormicktaylor.com
11 offices in PA, NJ,
MD, DE, VA & OH

Programs to Strengthen the Planning Profession

- ▶ Bachelor of Science in Planning offers two areas of specialization: Land-use and GIS and Environmental Planning. This is the only undergraduate degree of its kind offered in the Pennsylvania State System of Higher Education. Graduates have had a 95 percent placement rate in graduate schools over the last five years.
- ▶ Master of Science in Geography offers three areas of specialization: GIS/ Cartography, Regional Planning, and Environmental Planning.

We're helping future planners reach beyond their expectations.

Department of
Geography and
Regional Planning
www.iup.edu/geography
724-357-2250



Indiana University of Pennsylvania



[BUILDING RELATIONSHIPS.
DESIGNING SOLUTIONS.]
www.hrg-inc.com

LAND DEVELOPMENT • TRANSPORTATION
GIS • ENVIRONMENTAL • WATER & ENERGY
WATER RESOURCES • ELECTRICAL
SURVEYING/GPS • FINANCIAL

Serving the Mid-Atlantic Region



Strategy - Management Consulting



www.avantimc.com

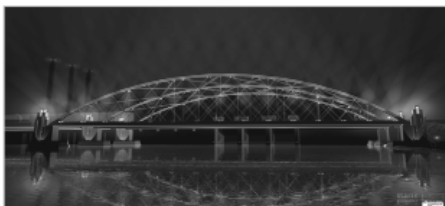
Perkins Eastman
WWW.PERKINSEASTMAN.COM

THE PENNSYLVANIAN 1100 LIBERTY AVENUE PITTSBURGH, PA
T. 412.456.0900 F. 412.456.0906
INFO@PERKINSEASTMAN.COM

The Southwest Section of the
American Planning Association's PA Chapter
welcomes you to Pittsburgh!



Maguire Group Inc.
PLANNERS / ENGINEERS / ARCHITECTS



for more information contact:
Louis Rocchini, P.E.
V.P. Transportation
412-322-8340
503 Martindale Street
Pittsburgh, PA 15212

CELEBRATING 70 YEARS OF ENGINEERING SUCCESS

DMJM HARRIS | AECOM

DMJM Harris is proud to be
a Silver Sponsor of the

**APA Pennsylvania Chapter's
2008 Conference**

Harrisburg • Horsham • Philadelphia • Pittsburgh • State College

www.dmjmharris.com

PPA Open Golf Outing

Sunday, October 12 – morning tee times
Alcoma Golf Course

Designed by **Emil Loeffler** in 1923 and maintained as a private country club for over 83 years, Alcoma Golf Course is now open to the public seven days a week. Now that this course is public, take this opportunity to visit this well known facility. With four sets of tees ranging from 5643 yards to 6623 yards, Alcoma can provide a challenge for all golfing abilities. Built on 152 rolling acres, the well maintained course features undulating fairways, a variety of scenic holes, and firm, fast greens that will test your game from tee to green. Just 15 minutes east of the Sheraton on the Parkway East.

The cost is \$50.00, which includes greens fees and a cart. To register for golf, please include this information on your registration form. You will be notified of your tee time. If you have a preferred foursome, please indicate that on the registration form.

Transit Passes Available

Thanks to the generosity of the Port Authority of Allegheny County, the **first 300 conference registrants** may obtain a transit pass for use while at the conference. The passes are valid for October 12-14 on bus, light rail and incline transit. Passes will be available at the Conference registration desk.



**PROVIDING
ENGINEERING
SERVICES
SINCE 1966**

PENNONI ASSOCIATES INC.
CONSULTING ENGINEERS

Bethlehem • Doylestown • King of Prussia • Mechanicsburg
Monroeville • Philadelphia • Scranton • State College
Uniontown • West Chester • Wilkes Barre

One Drexel Plaza, 3001 Market Street, Philadelphia, PA 19104
Ph: 215.222.3000 | Fax: 215.222.0384 | www.pennoni.com

Other offices located in NJ, DE, MD, MA, and NH



URS

www.urscorp.com

Redevelopment planning
Comprehensive plans
Design guidelines
Transportation planning
Zoning and development codes
Multi-municipal planning
Public involvement
Transit oriented development

CREATING PLACES

URS is a leader in planning, combining the talents of our planners, architects, and engineers into a unified team to build sustainable environments.

CONNECTING COMMUNITIES

For more information, please contact:

Keith Johnson
412.503.4700
keith_johnson@urscorp.com

Marian Hull, AICP/PP
215.940.9270
marian_hull@urscorp.com

EDUCATIONAL SESSIONS

SUNDAY

October 12, 2008

Tee Times >

PPA Open Golf Outing Alcoma Golf Course

Designed by Emil Loeffler in 1923 and maintained as a private country club for over 83 years, Alcoma Golf Course is now open to the public seven days a week. Now that this course is public, take this opportunity to visit this well known facility. With four sets of tees ranging from 5643 yards to 6623 yards, Alcoma can provide a challenge for all golfing abilities. Built on 152 rolling acres, the well maintained course features undulating fairways, a variety of scenic holes, and firm, fast greens that will test your game from tee to green. Just 15 minutes east of the Sheraton on the Parkway East. The cost is \$50.00, which includes greens fees and a cart. To register for golf, please include this information on your registration form. You will be notified of your tee time. If you have a preferred foursome, please indicate that on the registration form.

Noon – 5:00 p >

Exhibitor Set up Poster Session Set up

1:30 – 8:00 p >

Registration Desk open

11:30 a – 12:30 p >

PA Chapter Executive Committee Meeting

12:30 – 2:00 p >

PA Chapter Board of Directors Meeting

1:00 – 5:00 p >

PMPEI Board Meeting and Certified Instructors Forum

3:00 – 5:00 p >

Legislative Committee Professional Development Committee

6:30 – 8:30 p >

Welcome Reception at the Manchester Craftsmen's Guild and the Bidwell Training Center

The opening reception will take place at the Manchester Craftsmen's Guild. Award winning columnist Brian O'Neill of the Pittsburgh Post Gazette will be the featured opening speaker. A light buffet will do more than tempt your pallet and the CAPA High School Jazz Ensemble will supply outstanding entertainment while we mingle, meet new people, and acquaint ourselves with old friends. Art work from the Summer Studios and Staff Exhibit will be on display throughout the gallery spaces.

Manchester Craftsmen's Guild is a multi-discipline, minority directed, center for arts and learning that employs the visual and performing arts to foster a sense of accomplishment and hope in the urban

community. The vision of Manchester Craftsmen's Guild takes place in settings throughout Pittsburgh and has captured the attention of those rebuilding urban communities throughout the country.

CAPA High School is a Pittsburgh Public School for the Creative and Performing Arts. We look forward to kicking off the conference with you at what is sure to be an inspiring venue.

Brian O'Neill is a winner of the Associated Press Managing Editors of Pennsylvania award for column writing, a past winner of the Pennsylvania Newspaper Publishers' Keystone Award for column writing, as well as a winner of regional honors.

A graduate of Syracuse University, O'Neill lives on the city's North Side with his wife and two daughters.

A shuttle bus will make continuous loops to/from the Sheraton and the reception starting at 6:15 pm. Meet the bus at the front of the hotel.

MONDAY

October 13, 2008

7:00 a >

Registration Desk opens

7:00 – 8:00 a >

Continental Breakfast in the Exhibit Hall Visit Exhibitors and Poster Sessions

8:00 – 9:00 a >

Opening Keynote Presentation Will Cross



"Embracing the Mountain"

Will Cross is an educator and explorer who has learned that the secret to success is envisioning life and work as a series of challenging and inspiring adventures, with virtually endless opportunities to seize and mountains to embrace. As a world-class

mountain climber and a much-sought-after motivational speaker, Will is uniquely qualified to use the exploration metaphor in his presentation to help us maximize both effort and performance.

While working to overcome the challenges of diabetes, Cross has devoted most of his life to demonstrating how goal setting, preparation, and determination can make seemingly insurmountable obstacles negotiable.

Cities of the past: America's places of the future

In this presentation, Cross takes participants on a journey to the peak of their performance. He shares his stories about high mountains, vast deserts, and polar exploration, relating them to everyday situations that strike a universal chord. Cross teaches audiences how their approach to life can make all the difference, both at work and at home. He'll discuss overcoming obstacles to success, kick-starting your inner drive, and negotiating tough ideas with tough people.

Will's achievements have been covered by CNN, BBC, The Today Show, Discovery Channel, Voice of America, KDKA News and Talk Radio, and ABC, CBS, and NBC national affiliate stations. He has also appeared in publications such as The Wall Street Journal, USA Today, The New York Times, Explorers Journal, and GQ. He has completed the Peaks and Poles Challenge - summiting the highest peaks on all seven continents and walking to the North and South Poles in 2006. In 2005, Will won the Media Spokesperson of the Year Award.

Will's memberships include the American Alpine Club, Royal Geographical Society, Explorers Club, and the American Mountain Guides Association. He received a Gold Congressional Award for exemplary service to the United States, granted for his initiative, achievement and service. Will is a professional member of the National Speakers Association.

Will holds a Bachelor of Arts from Allegheny College, a Master of Science in Education from Duquesne University, and Secondary Principal's Certification from the University of Pittsburgh, where he specialized in educational programs for troubled teens. He has been living with Type 1 diabetes for over 30 years. Will, his wife Amy and their six children live in Pittsburgh.

economic development; multi-municipal planning; Smart Transportation; Smart Growth; meaningful public participation through the use of multi-day charrettes; model land use regulations; and project funding and management.

ALEXANDER J. GRAZIANI, AICP, Smart Growth Partnership of Westmoreland County; HANNAH TWADDELL, Renaissance

2. Lackawanna-Luzerne, A Case for Joint County Planning

This session will review the background for this joint county planning endeavor and explore planning issues and challenges unique to Lackawanna and Luzerne counties, including downtown revitalization, economic development, grayfields reclamation, and resource conservation and protection.

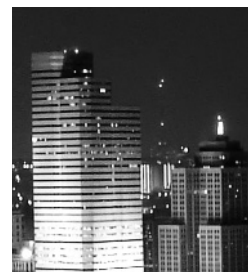
L. BERT COSSABOON, AICP, McCormick Taylor, Inc.

9:15 – 10:15 a ▶

Concurrent Workshops

1. Making the Land Use and Transportation Connection: Route 30 Master Plan

Since 2006, municipalities in Westmoreland County have been working together to create a safe and efficient transportation route by focusing on the land use side of the transportation and land use continuum. The project has utilized innovative public participation methods to better understand the concerns, ideas and vision of area residents. The session will cover several important and relevant subjects including: land use and transportation for eco-





EDUCATIONAL SESSIONS

3. Green-Lining Your Community

Land use regulations promoting conservation subdivision design are becoming more popular in Pennsylvania communities. Municipalities realize that the land development process is an important tool to use when building an open space network or greenway system. As municipalities gain experience using these codes, they are finding ways to increase their effectiveness, including the use of mapping tools that prioritize lands for resource protection and future open space.

ERIC JARRELL, Montgomery County Planning Commission; NATHAN WALKER, Natural Lands Trust

4. How Healthy (Or Sick) is your Zoning Ordinance?

The zoning ordinance is the critical instrument in implementing the desired objectives of your community. Too often, however, the results of the ordinance do not meet the intended objectives. In this session, attendees will be presented with a list of issues that can minimize the effectiveness of the ordinance, and how ordinances can be improved to better meet the land use objectives of your community. We plan to have a dialogue, so bring along your zoning ordinance!

ALLEN M. COHEN, AICP, Pashek Associates; ANDREW DASH, Marshall Township

5. Developing Regional Long Range Transportation Plans – PennDOT Guidance Update

In 2006, PennDOT developed the Regional Long Range Transportation Planning Guidance (Pub 575 3-06) document that offered tools and suggestions for MPOs and RPOs to help prioritize future transportation investments given consistent funding constraints. Over the last nine months, Parsons Brinckerhoff along with PennDOT has assessed and revised the guidance document highlighting new regulatory requirements and directions. The resulting updated guide serves as an enhanced reference to assist planning partners in developing effective long-range transportation plans.

RYAN LONG, Parsons Brinckerhoff; BRIAN WALL, Pennsylvania Department of Transportation

6. Sustainable Growth in Rural PA: Union County's New Model

Union County is approximately three hours from New York, Philadelphia and Washington, DC. This convenient location, the presence of Bucknell University, and the County's beautiful town and country setting are attracting significant growth. Union County's combined multi-municipal and county comprehensive planning effort is preparing a sustainable guide for future development and resource preservation by engaging its citizens in values-based planning and creating criteria to achieve sustainable growth.

SHAWN MCLAUGHLIN, Union County Planning Department; DAVID ROUSE, Wallace, Roberts & Todd, LLC

10:15 – 10:45 a ➤

Refreshment Break in the Exhibit Hall

Visit exhibitors, visit poster sessions, support scholarship fundraising raffle.

9:15 – 11:45 a ➤

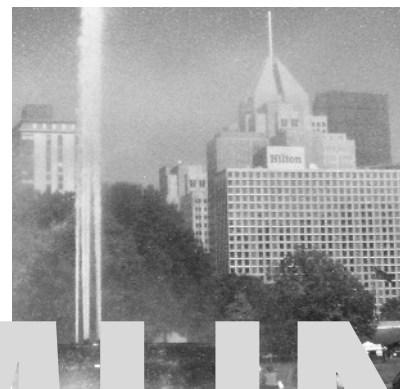
Concurrent Workshops

(Two-hour sessions with a break at 10:15)

7. Pennsylvania Land and Community Education – PA Land Choices – A Workshop for Planners on Educating General Citizens and Teachers

Educating the community is one of the most important aspects of planning. Join this session and participate in hands-on activities that will motivate and educate teachers, community members and students about planning. PA Land Choices has been revised into an exciting document including a web site. It is an educational program developed by the PA DCNR Bureau of State Parks involving professional planners.

ESTELLE RUPPERT, PA DCNR Bureau of State Parks; PETER WULFHORST, AICP, Penn State Cooperative Extension



Cities of the past: America's places of the future



8. Administering the Zoning Ordinance: A Mock Zoning Hearing

What does a zoning hearing board do? How should the zoning hearing be organized and managed? Who can participate in the zoning hearing? These and your other questions will be addressed by use of a "Mock Hearing of a Zoning Hearing Board." Members of the audience will observe and critique the mock hearing. The session will be lead by two PMPEI instructors, certified to instruct the PMPEI course "Zoning Administration." This session is part of a series for municipal officials and members of planning commissions and zoning hearing boards, and zoning officers. The material is taken from the PMPEI course "Zoning Administration."

JOHN GROH, CBO, City of Warren;
STAN M. LEMBECK, PMPEI

9. Ethics

This session will review the APA Code of Ethics. Participants will be given a copy of the code and discussants will review the structure and major points of both the code itself and the disciplinary procedures. This review will be followed by two scenarios that will provide the basis for group discussion. The first scenario will highlight some of the complexities of conflict of interest. The second will involve some of the provisions of Pennsylvania's Sunshine statute.

ROBERT BEGG, Indiana University of Pennsylvania; **RICHARD HOCH, Ph.D., AICP, Indiana University of Pennsylvania**

Concurrent Workshops

10. Measuring Growth and Market Impacts to Build Your Comprehensive Plan: The Case of Cranberry Township

The session will explain how to develop comprehensive plans that start with determining future land capacity and market potential and then creating policies that make the most of that potential. First different planning assumptions are built into different projections, producing various possible

future scenarios. Next, impacts of each scenario are measured. The impacts of the scenarios are compared, and then a preferred scenario is selected. Policies and zoning and planning regulations are implemented and incorporated in the comprehensive plan to guide growth toward the preferred scenario.

DANIEL SANTORO, Delta Development Group;
JOHN TRANT JR., Cranberry Township

11. Transit Revitalization Planning - Strategy for 21st Century Community Regeneration

Pennsylvania's local governments are beginning to lead the way in planning for new life and enhanced community character around regional transit centers by proactively engaging in intensive strategic land use planning and implementation strategies aimed at encouraging economic development investment activities. The Department of Community and Economic Development (DCED), in cooperation with Pennsylvania Department of Transportation (PennDOT) and other state agencies, has provided funding for TRID (Transit Revitalization Investment Districts) planning studies to support the designation and implementation of proposed TRIDs, and to define and support the rationale for local TRID designation. This program will examine principal aspects of TRID planning, including establishment of value capture areas in which additional tax revenues generated within the TRID may be applied to public transportation capital improvements, related site development improvements and maintenance.

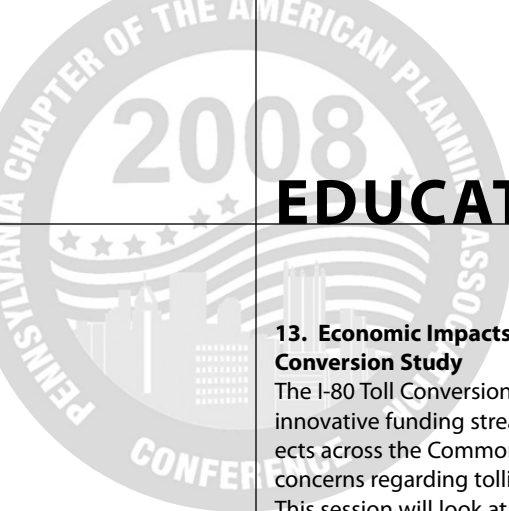
RONALD K. BEDNAR, AICP, Department of Community and Economic Development;
LYNN COLOSI, Clear View Strategies;
ANGELA MURRAY, AICP, Lower Merion Township

12. The Future of Zoning in Pennsylvania: Form-Based Ordinances

Oakmont Borough's ordinance blends traditional zoning techniques with form-based controls. This hybrid code is designed to guide the transformation of the Borough's Special Industrial District and ensure that the long-term development of its Mixed-Use district is woven into the existing community fabric. Moreover, the code seeks to balance community-wide goals with development, community interests related to bulk, density, land use, organization of blocks and lots, streets, parking, service areas, open spaces screening and pedestrian circulation.

CAROLYN YAGLE, Environmental Planning and Design, LLC

10:45 – 11:45 a ▶



EDUCATIONAL SESSIONS

13. Economic Impacts of the I-80 Toll Conversion Study

The I-80 Toll Conversion project will provide an innovative funding stream for transportation projects across the Commonwealth, but there are valid concerns regarding tolling an existing highway. This session will look at the economic impacts studied as part of the project as well as the mitigation measures that have been identified to lessen the burden on existing businesses along the corridor.

DR. JERRY PAYTAS, GSP Consulting

14. Using the Pittsburgh Neighborhood and Community Information System to Enhance Community Planning

This session will focus on the Pittsburgh Neighborhood and Community Information System (PNCIS), a property information system that collects integrated information on community conditions and provides it to local stakeholders. The session will focus on building the PNCIS and neighborhood applications in affordable housing, foreclosure analysis, and neighborhood planning.

SABINA DEITRICH, Center for Social & Urban Research, University of Pittsburgh;

ROBERT GRADECK, Center for Economic Development, Carnegie Mellon University

15. Greenprint: Planning for Climate Change

Using Greenprint: A Climate Change Action Plan for Montgomery County, PA as a case study, learn how to plan for greenhouse gas reduction through a collaborative process. Understand greenhouse gas reduction targets and come away with over 100 potential greenhouse gas reducing actions, which provide cost savings and energy conservation. Additionally, hear about the co-benefits of greenhouse gas reducing actions that give implementation broad appeal and applicability to those on both sides of the global warming debate.

NICOLE GALDIERI, Montgomery County Planning Commission; MIKE STOKES, Montgomery County Planning Commission

12:00 – 1:30 p ▶

Pitkin Luncheon and Lecture The Honorable Ron Littlefield, AICP Mayor of Chattanooga, TN



Chattanooga, the 4th largest city in Tennessee, is located near the border of Georgia at the junction of four interstate highways. The city has received national recognition for the renaissance of its

beautiful downtown and redevelopment of its riverfront. The city boasts the most productive affordable housing program in the nation, and is notable for leveraging development funds through effective public/private partnerships, with significant civic involvement on the part of private foundations. Chattanooga was one of the first US cities to effectively use a citizen visioning process to set specific long-range goals to enrich the lives of residents and visitors. Here Chattanooga's Mayor describe the City's evolution, and hear how community planning strategies led the way!

Mayor Littlefield was sworn into office on April 18, 2005. He brought with him many years of experience in City Government and urban planning. He has been an instructor at the University of Tennessee at Chattanooga, as well, teaching a summer postgraduate course on metropolitan politics and policies.

Mayor Littlefield has served in several previous capacities within government, including: Member, Chattanooga City Council (Chairman FY 1990-1992 and FY 2002-2003); Acting Director of Planning and Development, Walker County, GA, 1997-2000; Commissioner of Public Works, Chattanooga, TN, 1987; Economic Development Coordinator, City of Chattanooga, TN, 1979; Director of Current Planning and Operations, Chattanooga-Hamilton County Regional Planning Commission, 1977; Senior Planner, Chattanooga-Hamilton County Regional Planning Commission, 1974; and Planner-in-Charge, Tennessee State Planning Office, 1969.

Mayor Littlefield has worked with many planning, research, and urban-development projects, including: subcontractor on master plan for Chattanooga Metropolitan Airport, as consultant with Parsons Brinckerhoff; subcontractor on engineering feasibility study of the Atlanta-Chattanooga MagLev High Speed Rail Proposal as a consultant with Parsons Transportation Group; Market Development/Government Relations

11:45 – Noon ▶

Travel time

Cities of the past: America's places of the future

with Infrastructure Services Inc.; Consultant/Public Sector with Roadtec Inc.; Executive Director, Chattanooga Venture; General Manager, Chattanooga Area Economic Development Council; Incorporator and Charter Member of the Board of Directors, Chattanooga Museum of Regional History; Incorporator, Southeast Tennessee Local Development Corporation; and Special Consultant to the City of Chattanooga for the Chattanooga-Atlanta High Speed Rail Initiative.

Mayor Littlefield holds several professional certifications and memberships, including: American Institute of Certified Planners; American Planning Association, Member; Urban Land Institute, Member; Former Chairman, Chattanooga Metropolitan Planning Organization; one of seven members of the Advisory Committee on Rural Transit for Aged and Disabled Citizens in the State of Georgia; Solid Waste Association of North America, Charter Member—TN Chapter; member: Tennessee Municipal League, Environmental Issues and Public Works Committee; and member: National League of Cities, Energy and Environment Committee.

1:30 – 1:45 p ▶

Travel time

1:45 – 2:45 p ▶

Concurrent Workshops

16. Creating Sustainable Community Parks

Too often parks are designed with only recreation in mind, while ignoring, or even worse, harming, the natural resources. Sustainable Community Parks are designed and maintained to balance recreation and conservation. Design topics from the DCNR Sustainable Community Parks publication will be expanded



upon, and attendees will learn from case studies of parks that have implemented some of the principles in the book.

JESSICA SPRAJCAR, PA Department of Conservation and Natural Resources

17. Promoting Walking & Biking to School: PA's Safe Routes to School Academy Program

Safe Routes to School (SRTS) is a program that makes walking and biking to school a safe and appealing transportation alternative, encouraging a healthy and active lifestyle from an early age. Come learn about Pennsylvania's statewide SRTS Academy Program which provides funding and actionable strategies for developing SRTS plans in local schools and communities.

ROBYN RICKETTS, PA Advocates for Nutrition & Activity (PANA)

18. Parks of the Past: Neighborhoods of the Future

You will hear how to identify a project and the need to revitalize existing outdated park facilities and build new facilities. Further, we will discuss gathering supporters and input from the community, and how to rally a volunteer base. The State's role in providing technical assistance will be covered, as well as applying for grants, and preparing a good application.

CHRIS BLACKWELL, Penn Hills Department of Planning and Economic Development; DAN MILLER, Penn Hills Department of Parks and Recreation

19. Planning for Fresh Food Retail

Supermarkets provide vital economic and public health benefits to communities by anchoring developments and catalyzing other investments, as well as providing access to fresh, affordable and healthy foods. Pennsylvania's Fresh Food Financing Initiative (FFFI) is an innovative \$120 million program that supports supermarket and grocery store development in Pennsylvania's underserved communities. This session will address the development of the FFFI and how it can support supermarket development in your own community. Further, a case study that highlights the development of a neighborhood supermarket will be presented.

CAROLINE HARRIES, The Food Trust; TINA FACKLER, Johnson, Mirmiran and Thompson

VITALIZE
PARKS

EDUCATIONAL SESSIONS

20. Transportation Impact Fees in PA

Transportation Impact Fees are a funding mechanism permitted by the MPC for municipalities to improve roadways necessitated by new development-related traffic. This session will address Act 209 and Article V-A of the MPC, and how to effectively implement a transportation impact fees program in your municipality. PennDOT's new handbook on Transportation Impact Fees will help guide the user through the requirements set forth in the MPC.

CHAD DIXSON, Traffic Planning and Design, Inc.;
JEFF REED, PennDOT

21. Update/Status Report on Required Training Task Force, MPC Revisions and Other Legislative Issues

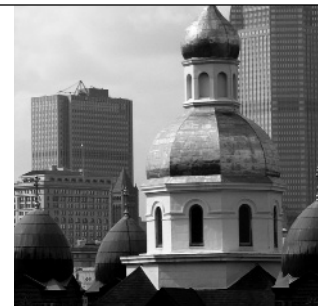
This session will provide background information and a status report on the work and recommendations of the PA Chapter's Required Training Task Force and our work to advance legislation that would require training for planning commissioners, zoning hearing board members and zoning officers. A summary of the latest recommendations from Pennsylvania's MPC Subcommittee will also be presented, as well as an update on other chapter legislative initiatives.

RICHARD BICKEL, AICP, Delaware Valley Regional Planning Commission; STAN M. LEMBECK, AICP, Penn State University Cooperative Extension

22. A Better Way to Zone

Euclidean zoning is not working well for most large U.S. cities. You will hear about the ten principles outlined in A Better Way to Zone (2008 Island Press) and information on the upcoming Sustainable Development Code to show how zoning can be reformed to be more understandable, flexible, and sustainable.

CHRIS DUERKSEN, Clarion Associates;
DON ELLIOTT, Clarion Associates



23. Back to Basics!! in Community Planning

An introduction to municipal planning is offered for new municipal officials and members of planning commissions. The material is a good refresher for the person with planning experience. We will cover the MPC and recent changes, and how to be more effective and make more efficient use of volunteer time. The session is led by two PMPEI instructors certified to instruct the PMPEI course "Community Planning." Material covered in the session is taken from this course. This session is part of a series offered for municipal officials.

NEAL FOGEL, PMPEI; SHIRLEY YANNICH, AICP, PMPEI

24. Financing Economic Development in Tough Times and in Tough Locations

This session will provide an analysis of economic revitalization through job creation. The current dynamic is to bring a supermarket to this community, for three primary reasons: 1) to provide a needed service to the community, which is the opportunity to shop for groceries at a 40% discount within the neighborhood; 2) to provide jobs for the residents of the neighborhood; 3) to incentivize other businesses to come to the area. The speaker will highlight the role and challenges used to engage a national grocer in locating in the community that has been devoid of a national chain grocery store for more than 20 plus years. Other benefits of having a viable business in the community will be the improvement of the economic status of the residents of the community; provision of a diverse economy that is necessary to help the community's wealth increase, which is important in urban communities; and, as more businesses move into the community, which increases foot traffic, that increased foot traffic also minimizes crime. These are multiple benefits of financing economic development in tough times and tough locations. Finally, the speaker will review an actual balance sheet and income statement of a funded development and emphasize how to look at financial statements and assess the viability of a deal when there are limited sources of funding available and credit quality is minimal.

HOWARD SLAUGHTER, JR, Landmarks Community Capital Corporation

Cities of the past: America's places of the future

2:45 – 3:15 p ▶

Refreshment Break in the Exhibit Hall

Visit exhibitors, visit poster sessions, support scholarship fundraising raffle.

3:15 – 5:15 p ▶

Concurrent Workshops (Two-hour sessions)

25. Outdoor Lighting Issues for Planners and Municipalities

Good outdoor lighting cannot be left to chance, whether in the city or rural areas. Communities can promote good lighting by having an effective ordinance. Learn how to recognize good and bad lighting, the elements of an effective lighting ordinance, and how to get one enacted and enforced.

BARRY L. JOHNSON, Pennsylvania Outdoor Lighting Council; STANLEY STUBBE, Pennsylvania Outdoor Lighting Council

26. Finding Hidden Opportunities: Understanding Infill, Redevelopment and Replacement

The concept of infill, redevelopment and replacement (IRR) will be introduced and the value of encouraging IRR-oriented development will be discussed. Typical zoning issues that impact the feasibility of IRR will be highlighted. Slides of real-world examples will be presented and will be annotated to draw a comparison with the community's actual required standards. A series of tools to evaluate the IRR-friendliness of zoning ordinances and to build community awareness will also be provided.

CHRIS KNARR, Rettew Associates, Inc.; ANDREW JG SCHWARTZ, Environmental Planning & Design

27. Rural Corridors and Communities: A Case Study of the Northern Tier

You will hear about the Greater Mansfield Revitalization and Mobility Analysis, the Northern Tier's Land Use, Transportation and Economic Development Plan; and the Scenic Corridors Inventory. Participants will hear about the value of incorporating implementation plans in planning contracts. The value of public/private partnerships will be explored, and participants will learn about the importance of linking land use, transportation and economic development.

BRIAN FUNKHOUSER, Gannett Fleming; JAMES BROCK, Dering Consulting Group; MICHELLE BRUMMER, Gannett Fleming; RICK BIERY, Northern Tier Regional Planning & Development Commission

28. Smart Transportation Solutions for Pennsylvania and New Jersey

The team will discuss Smart Transportation Solutions for Pennsylvania and New Jersey, a guidebook that will shortly be released by the DVRPC. It is jointly sponsored by PennDOT and NJDOT and is intended to be applied across the entirety of both states. Participants will hear about the context sensitive design and smart growth principles of this dual state project.

DANIEL KUEPER, Orth-Rodgers & Associates, Inc.; BARRY SEYMOUR, Delaware Valley Regional Planning Commission

29. Reinhabiting Campus Neighborhoods

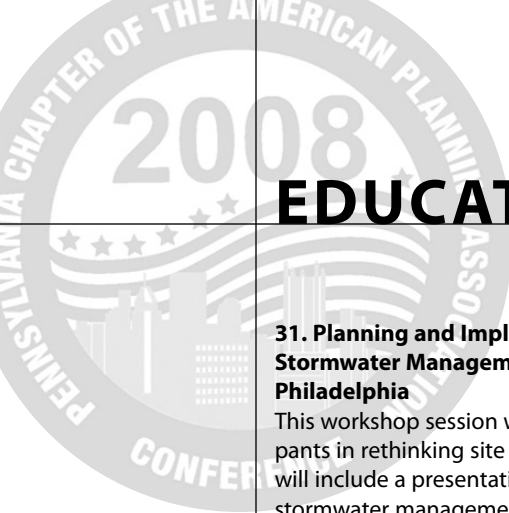
Communities hosting institutions of higher learning face a number of institutional, budgetary and regulatory challenges. These challenges are both common in and unique to, the college town. They are unique because many challenges arise out of the interactions of those making up the unique demographic of campus neighborhoods. They are common because every host community shares similar challenges. This session is designed as a structured forum for the consideration, discussion and evaluation of strategies currently employed by host communities to address these unique, yet common, challenges.

JEFF RAYKES, Indiana County Office of Planning and Development; D. WHIT WATTS, Indiana University of Pennsylvania

30. Interpreting and Designing Subdivisions

Sharpen your subdivision review skills. Get some insights on elementary design concepts for land development. This session is a hands-on exercise for municipal officials and members of planning commissions. Participants will perform and consider options for the layout and interpretation of a pre-selected site. Discussion will be guided by two PMPEI instructors certified to instruct the PMPEI course "Basic Course in Subdivision Review." This session is part of a series offered for municipal officials.

WILLIAM BROBST, PMPEI; DAVID WARD, AICP, Chester County Planning Commission



EDUCATIONAL SESSIONS

31. Planning and Implementing the Green City: Stormwater Management and Site Planning in Philadelphia

This workshop session will actively engage participants in rethinking site planning for urban areas. It will include a presentation on Philadelphia's stormwater management program and the lessons learned from implementing new stormwater management regulations. The workshop will focus on green approaches to urban infrastructure which have been designed and/or implemented in Philadelphia, including green streets, green roofs, porous paving and rain gardens.

GLEN ABRAMS, Philadelphia Water Department;
SUZANNA RANDALL, Philadelphia Water Department

32. PA DCED Planning Policy Forum

DCED's planning program manager, Denny Puko, will facilitate an interactive session on current DCED planning policy and assistance offered to Pennsylvania local governments. Topics will include the planning grant program (LUPTAP), planning training efforts, current priorities like the Keystone Principles and the call for more action and outcomes oriented planning, and the upcoming Five Year Land Use and Growth Management report required by the PA MPC. Input on these topics will be sought from participants. Also, the DCED community planning reps for each region will be present to meet and get to know.

DENNY PUKO, PA Department of Community & Economic Development

33. AICP Exam Prep Session

Are you interested in becoming a certified planner and taking the AICP exam? If so, the PA Chapter and its Professional Development Committee are here to help. In this session, speakers will explain the benefits of certification and will describe what the modern exam is like. They will cover all of the resources available to help you prepare for the exam, including the Chapter's own study notes, study groups, and semi-annual workshops. In short, the speakers take out the guesswork in preparing for the exam.

LEE SLUSSER, AICP, Professional Development Officer; **DAVID MCFARLAND, III, AICP, Working Landscapes, LLC**

6:00 – 8:00 p ▶

Evening Reception

The Grand Concourse

The evening reception begins with a welcome from Arthur Zeigler, Jr., President of the Pittsburgh History and Landmarks Foundation. You will then enjoy hors d'oeuvres in a grand environment. Take in the sites both inside and outside of this beautiful piece of history!

The Grand Concourse is set in the Edwardian splendor of the Pittsburgh & Lake Erie Railroad terminal built in 1901. Opened to the public in April of 1978, the Grand Concourse is part of Pittsburgh History and Landmark's Station Square restoration, which is on the National Register of Historical Sites. About a 2-minute walk from the Sheraton, the facility sits with a grand view of the Golden Triangle. The decor of the Grand Concourse combines brass, marble, mahogany and a breathtaking stained glass cathedral ceiling.

TUESDAY

October 14, 2008

6:30 a ▶

Fun Run

Prior to a full day of sessions, workshops, and tours take in a five mile run on a small portion of the Three Rivers Heritage Trail right from the hotel. The Three Rivers Heritage Trail is a wonderful pedestrian trail and greenway system around Pittsburgh. Running for 37 miles along both sides of the Allegheny, Monongahela and Ohio Rivers, it is an almost complete public route for cyclists, walkers, runners, and, in some places, rollerbladers. We will run along several sections of the trail leaving right from the hotel and completing a five mile loop. This may sound far, but it is flat and easy passing by shops, restaurants, and other sites that we will point out along the way. If you would prefer to ride, bicycles are available for free from the Friends of the Riverfront. The Friends of the Riverfront was established to create and is dedicated to the continued expansion of the Three Rivers Heritage Trail. They advocate for and build multi-use trails, parks and continuous public access along our three rivers through active partnerships with communities, public leaders, citizens and organizations from around the region.

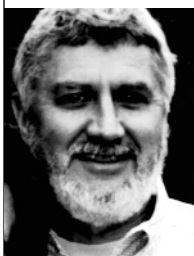
Cities of the past: America's places of the future

8:00 – 9:00 a ▶

Wake Up with the Exhibitors!**Breakfast**

**Visit exhibitors, visit poster sessions,
support scholarship fundraising raffle**

9:00 – 10:00 a ▶

Penary Session**Dr. Edward K. Muller**

**“In spite of the river’ ought to
be a Pittsburgh town slogan”¹**

Except perhaps for sports, Pittsburgh is best known for its once mighty steel industry and the accompanying smoky skies and secondarily for its post-World War II Renaissance. These images overshadow many other noteworthy characteristics, one of which is Pittsburgh’s important role in American planning history. Fitting its status as a leading American city during the first half of the twentieth century, nationally prominent planners and architects doing planning, including Daniel Burnham, Frederick Law Olmsted Jr., Harland Bartholomew, Robert Moses, Clarence Stein, Henry Wright, and even Frank Lloyd Wright, came to Pittsburgh with ideas and plans, some of which materialized and many which did not. Planning for Pittsburgh’s riverfronts illustrates not only imaginative ideas and mundane half measures held out to the city, but also the prevailing utilitarian attitude of civic leaders, which constrained the vision necessary for notable achievements in reshaping the city. Even the Renaissance that did bring about some remarkable accomplishments bumped into the limits of a pragmatic industrial perspective. This underdeveloped imagination for superb design might be seen at times as having a legacy in the region today.

*Edward K. Muller is Professor of History and Director of the Urban Studies Program at the University of Pittsburgh. He received his M. A. and Ph.D in Geography at the University of Wisconsin, Madison, and taught for several years in the Department of Geography at the University of Maryland before joining the Department of History at the University of Pittsburgh in 1977. He is a past chairperson of the Department of History and a Fulbright Research Scholar in New Zealand. Author and editor of books and articles on the historical geography of North America, particularly cities, he edited *North America: The Historical Geography of a Changing Continent* (Rowman & Littlefield, 2001), and DeVo-*

10:00 – 10:15 a ▶

**Travel time and refreshment break;
support scholarship fundraising raffle**

10:15 – 11:15 a ▶

Concurrent Workshops

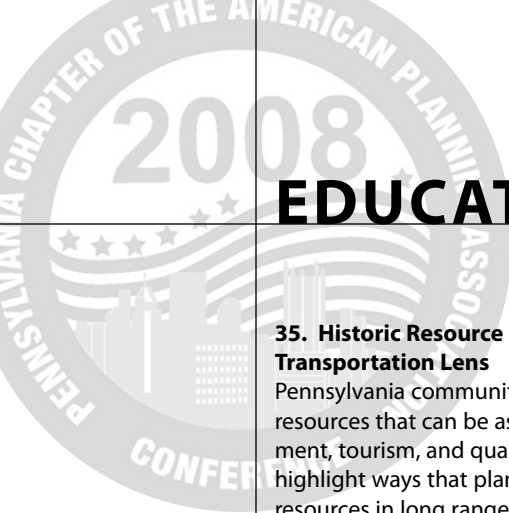
34. Incorporating Conservation Easements into Comprehensive Land Use Planning

This will provide attendees with an introduction to the various legal avenues available to create conservation easements. It will focus on the effects that CEs have on future land use planning and how to incorporate CEs into comprehensive long range planning. With almost 3,500 farms comprising over 380,000 acres enrolled in the State Farmland Preservation Program currently, and over 1,500 properties being held by the 43 land trusts across the state, it is an issue that must be addressed. “Conservation by Design” development also must consider the portion being conserved. The challenges of easement stewardship will be discussed.

**D. ROBERT DAVIDSON, AICP, Pennsylvania
Department of Agriculture**



¹ Frank Lloyd Wright, 1935



EDUCATIONAL SESSIONS

35. Historic Resource Planning through the Transportation Lens

Pennsylvania communities are rich with cultural resources that can be assets to economic development, tourism, and quality of life. This session will highlight ways that planners can consider these resources in long range plans and corridor plans, and will also discuss less traditional avenues such as developer negotiations, and conservation by design techniques. PHMC staff will be on hand to identify resources and funding opportunities available to communities and to discuss successful projects statewide.

MICHELLE BRUMMER, Gannett Fleming, Inc., ANDREA MACDONALD, PHMC Bureau for Historic Preservation; KELLY ROSSITER, Delaware Valley Regional Planning Commission

36. GreenPlan Philadelphia: The City's Blueprint for Sustainable Open Space

GreenPlan Philadelphia presents a unified vision for sustainable open space developed through collaboration among 14 city agencies, citizens, and partners. The plan will help the city secure funding, reuse vacant land, ensure waterfront access, prepare for climate change, reveal green infrastructure as a necessary utility, and equalize the distribution of open space. The plan takes a wide view, using a sustainability framework that considers the environmental, economic, and quality of life impacts of open space.

MAMI HARA, Wallace Roberts & Todd, LLC; ALAN UREK, Philadelphia City Planning Commission

37. Economic Analysis: Right Numbers, Right Results

Location quotients are among the most commonly used economic indicators by planners. They are now readily available from web sites such as the BEA for counties. However, planners may not understand the theoretical basis for LQs or the severe limitations of 3-digit NAICS data. The session reviews the calculation of LQs and the county employment multiplier and, using 6-digit NAICS data, shows the vast difference in the analytic capabilities for target analysis, multiplier calculation, and links to established PA industrial clusters.

ROBERT BEGG, Indiana University of Pennsylvania; RICHARD HOCH, Indiana University of Pennsylvania

38. The Positive Impact of Latinos on Rural and Urban Environments

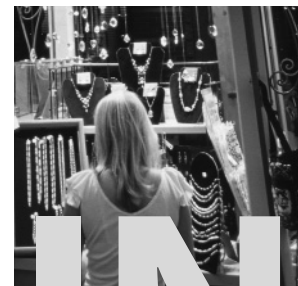
The Latino population in southeastern Pennsylvania continues to increase; it has an economic and social impact on urban and rural communities. The Latino migration and immigration experience parallels those of Eastern and South European immigrants of the 19th century. Patterns of assimilation are similar with some exceptions. Each immigrant population replaces the previous one in historic neighborhoods and leaves its indelible mark on the built environment as well as adapts it to its needs. While immigrants have contributed to the economic wealth of the U.S., they have tended to be perceived at times of economic stress and war as threatening the cultural "purity" of the established culture. The term "Latino" is a misnomer as it does not reflect the diversity of nationality, culture, ethnicity, religious and educational backgrounds of the Latino people. This session will explore the impact of Latinos on Pennsylvania's communities and the varied responses Latinos have from "native" Pennsylvanians.

MICHEL R. LEFEVRE, Pennsylvania Historical & Museum Commission; ANDREA MORATO-LARA, Pennsylvania Association of Latino Organizations

39. Zoning Limitations

So you think you know zoning? Zoning is complex, and has limitations. This intermediate level session is appropriate for municipal officials and members of planning commissions and zoning hearing boards and zoning officers with some experience with zoning. Federal and state legislation and court decisions as well as the MPC have posed limitations on zoning techniques. The session is lead by two PMPEI instructors certified to instruct the PMPEI course "Zoning." The material is taken from the zoning course. The session is part of a series offered for municipal officials and members of planning commissions and zoning hearing boards.

CHARLES COURTNEY, ESQ., McNees, Wallace & Nurick, LLC



Cities of the past: America's places of the future



40. Planning and Legal Challenges in the Drive to Develop Alternative Energy Sources

Environmental and national security concerns have accelerated Federal and State efforts to encourage the development of alternative energy sources. New and non-traditional uses such as wind farms and coalbed methane gas wells present unique challenges for local planners and elected officials. This program will explore the legal authority and limitations on local regulation of alternative energy facilities.

BLAINE LUCAS, Babst Calland Clements & Zomnir, P.C.

41. Regulating Digital Billboards and Signs

Changing technologies in sign advertising provide a regulatory challenge for municipalities to balance developers' rights with the public interest. Attorneys representing the municipal and private sectors and an industry representative will discuss legal and planning challenges and strategies in regulating digital signage.

TIMOTHY J. BISH, ESQ., Babst, Calland, Clements & Zomni, P.C.; JONATHAN KAMIN, ESQ., Goldberg, Kamin & Garvin

42. New Planners – What Employers are Looking For!

This session will be geared to students preparing to enter the workforce as a land use professional working in the public, private, or non-profit sector. The session will offer insight into how employers will be assessing potential employees, aspects of professional development to support career aspirations, and what new professionals can expect in terms of job demands in different employment sectors. The panel of speakers will include representatives from national planning consulting firms, governmental agencies, and non-profit entities.

11:30 a – 1:15 p ➤

Annual Meeting, Awards Program and Luncheon

It is time once again to celebrate the achievements of Pennsylvanians who shape where we live, work and play! Join Brian O'Leary, chair of the PA Chapter Awards Committee, for an inspiring awards program, recognizing the work of planners, planning officials and elected officials and their roles in planning Pennsylvania.

Following lunch, PA Chapter President Alex Graziani will present a "State of the Chapter" report, highlighting our successes in the past year, and outlining our priorities for the future. You will hear of many opportunities for you to help contribute to the health of your profession and your association!

1:15 – 1:45 p ➤

Dessert with the exhibitors

Visit exhibitors, visit poster sessions, and don't miss this last chance to win wonderful prizes while supporting the student scholarship fund! Oh, and have a wonderful dessert, too!

1:45 – 2:45 p ➤

Concurrent Workshops

43. Eliminating Blight: It's Role in Making Cities...Places of The Future in Pennsylvania

Blight is not just an urban problem! It affects all municipalities in Pennsylvania to some degree. Municipalities lack adequate deterrents to discourage slumlords from letting their properties become blighted and then abandoning them. Blight is an "economic crime" costing taxpayers and municipalities millions of dollars annually in lost property tax revenues, sewer and water fees, and increased municipal expenditures. As a result of an active Statewide Blight Task Force convened by Senator James Rhoades, recommendations to reverse these negative trends have been built into legislation that has been introduced in the PA General Assembly. Learn about the Neighborhood Blight Reclamation and Revitalization Act of 2008, and how you can eliminate blight in YOUR community!

JERI E. STUMPF, Jeri E. Stumpf & Associates, Inc.

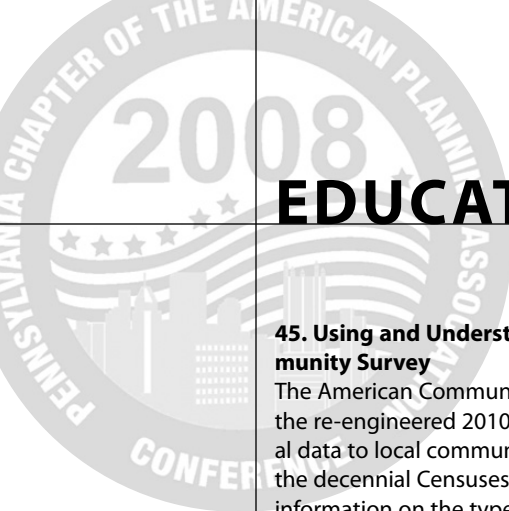
44. Wireless Communications Infrastructure — Why You Need It, and How to Zone It

This session will cover the linkages between wireless communications and economic development, safety, education and quality of life. Presenters will demonstrate examples of balanced ordinances and the core elements which must be present. Information and links to resources for local planners to revise ordinances will be provided.

FRANK CARNEY, PA State Wireless Association; Robert E. Smith, AICP, Crown Castle

11:15 – 11:30 a ➤

Travel Time



EDUCATIONAL SESSIONS

45. Using and Understanding the American Community Survey

The American Community Survey (ACS) is part of the re-engineered 2010 Census that provides annual data to local communities in the years between the decennial Censuses. This session will provide information on the type of data available from the ACS, how the data can be accessed online, and how the data can be used for planning purposes.

CARRIE BISHOP, Pennsylvania State Data Center

46. Recent Pennsylvania Department of Environmental Protection Policies and Legislation Impacting Land Use

This session focuses on recent environmental policy and legislation implemented by the Pennsylvania Department of Environmental Protection that impact land use in Pennsylvania: the Uniform Environmental Covenants Act (UECA) and DEP's Land Use Policy. UECA, signed into law December 2007, requires property cleanups subject to activity and use limitations be memorialized with an Environmental Covenant. This legislation provides greater assurance that environmental cleanups will occur as intended in communities throughout Pennsylvania. DEP's Land Use Policy provides direction and guidance to DEP staff, applicants, and local and county governments for the implementation of the Municipalities Planning Code and administration of current DEP programs to avoid or minimize conflict with local land use decisions. The policy addresses the consideration of comprehensive planning and zoning in DEP's decision making process.

DENISE M. BRINLEY, PA Department of Environmental Protection; TROY CONRAD, PA Department of Environmental Protection; TRACEY VERNON, AICP, PA Department of Environmental Protection

47. The Philadelphia Story: A Civic Vision for the Central Delaware

Based on planning principles grounded in a year-long public civic engagement process, this riverfront plan provides a vision for the future of Philadelphia's major cultural, ecological, and economic assets. With more than 1,100 acres of land stretching over seven miles at the center of the metropolis, the plan offers a prime opportunity to reverse the trend of regional expansion through greenfield development and encourage the reclamation of undervalued land along the shores.

FERDINANDO MICALE, Wallace, Roberts & Todd, LLC; HARRIS STEINBERG, PennPraxis

48. Green Building/Green Planning

You will hear a brief introduction of land development policies and the practices and impacts they lead to. "Transparent vs. Transformative" is a presentation of two models for development of green affordable housing in Central Pennsylvania and how these models can be more widely replicated. Speakers will provide indepth information about the tools that municipalities need to manage growth more effectively. Lastly, a hands-on "Charrette" will be conducted using the two models presented, to demonstrate the green building concepts outlined.

BRUCE L. QUIGLEY, Office for Planning and Architecture; DAVID L. SHERIDAN, Sustainable Community Development Co./AquaCura

49. Pittsburgh's Rail Trails and Industrial Archaeology: An Opportunity for Historic Preservation and Education

Since the 1990s, Pittsburgh has built an extensive network of riverfront rail-trails. This was made possible with the decline of heavy industry in the region and changes in the railroad network which served those industries. While much of the industry and railroad activity has vanished, many structures and other artifacts remain. The trails provide an opportunity to preserve remnants of Pittsburgh's industrial past and to educate the public about Pittsburgh's transportation and industrial history.

DAVID WOHLWILL, Port Authority of Allegheny County

50. Redesigning Urban Streets as Civic Assets – Penn Avenue Corridor Phasing Plan

The City of Pittsburgh is currently engaged in developing a Corridor Phasing Plan for Penn Avenue, a two mile long major arterial corridor traversing four neighborhoods in the City. The purpose of the plan is to present a community-prioritized list of discreet transportation projects, of about \$4-\$5 million each, that can be implemented in phases. The plan is based on a Visioning Study for the corridor completed last year and will employ the concept of "Civic Design" to translate the vision into concrete physical improvements. The Plan is scheduled for completion in January of 2009. This session will present the basis, progress and intended outcome of the plan to date.

PATRICK HASSETT, City of Pittsburgh

ENVISION

Cities of the past: America's places of the future

51. Updates on Emergency Management: The More Things Change, the More They Stay the Same

A panel of speakers from the Pennsylvania Emergency Management Agency will discuss the wide spectrum of federal planning documents and programs that have been generated by the Department of Homeland Security following 9/11/01 and Hurricane Katrina (as well as a few in place before those events) and their effects on state and local government planning. Topics include the National Response Framework, The National Preparedness Guidelines, The National Incident Management System, capability-based planning, Citizen Corps programs, homeland security grant program funds, disaster recovery funding programs and training opportunities. Many of these documents, systems, programs and funds have implications and/or opportunities for local government.

EVALYN FISHER, AICP, PEMA; JOSEPH L. ROBERGE, PEMA; PAMELA L. WEEKS, PEMA

2:45 – 3:00 p ▶

Refreshment Break

3:00 – 5:00 p ▶

Closing Plenary – Legal Update

This seminar provides a full update of state and federal judicial decisions and related legislative initiatives since the last PPA Conference. The seminar will be presented in a blended lecture/question and answer format. Audience participation is strongly encouraged.

SUSAN SMITH, ESQ., AICP, Smith Cartright LLP

POSTER SESSIONS

Poster sessions will be displayed near the exhibit area. Presenters will be available during break times to discuss their work. The following sessions will be on display:

Pennsylvania Population Projections

Detailed population projections are essential to any planning efforts. The Pennsylvania State Data Center recently released detailed population projections out to 2030 for the state and counties by age, gender, race and ethnicity. This session will present information on the methodology used to create the projections and discuss how Pennsylvania's population is projected to grow and change over the next 20 years.

SUE COPELLA, Pennsylvania State Data Center

The Vision of 1.3 Million Citizens

Allegheny Places is a plan for a complex urban region in the midst of economic restructuring. By making consistency a priority, Allegheny Places brings together those living in the county's 130 municipalities and numerous agencies to achieve a vision of economic opportunity, sustainability and environmental stewardship.

BRANDI ROSSELLI, AICP, McCormick Taylor

Enabling Sustainable Development: New Standards for Residential Site Development

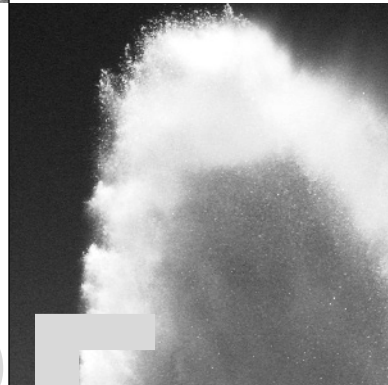
Current planning trends embrace techniques that encourage more sustainable, low-impact forms of design. However, a gap exists between the desire for these and the barriers to their implementation in local ordinances. A new set of recommended standards — backed up with research data and case studies — provide guidance to fill that gap.

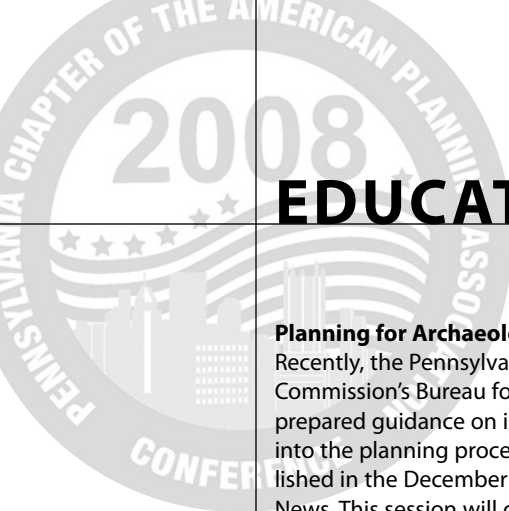
KELLEANN FOSTER, Penn State University Dept. of Landscape Architecture

Greenways: Connections in Our Landscape

Greenway planning provides an opportunity for development and implementation of a regional greenway vision at the local, county, regional and state levels. Learn from the participants how to develop a regional greenway plan.

ANDREW SCHWARTZ, Environmental Planning & Design; RICHARD E. STAHL, Huntingdon County Planning Commission





EDUCATIONAL SESSIONS

Planning for Archaeology

Recently, the Pennsylvania Historical and Museum Commission's Bureau for Historic Preservation has prepared guidance on incorporating archaeology into the planning process. This guidance was published in the December 2007 issue of Borough News. This session will give an overview of BHP's planning guidance, followed by an analysis of how archaeology could be incorporated into Gettysburg's updated comprehensive plan.

KEITH T. HEINRICH, Pennsylvania Historical and Museum Commission; MERRY V. BUSH, Borough of Gettysburg

Zoning, Urban Form, and Civic Identity:

The Future of Pittsburgh's Hillside

Like other cities, Pittsburgh's traditional land use and zoning controls do not address challenges facing our cities today, such as quality of life, sustainability, or civic identity. Within a context of ineffective planning controls, Pittsburgh's hillsides were experiencing development pressures not previously seen. This study sought a new planning approach – recognizing Pittsburgh's hillsides as assets (urban form) and fundamental to the city's identity. Through this study, urban form was shown to be a valid basis for legislation and an integral part of “public welfare.”

STEPHEN QUICK, FAIA, Perkins Eastman

MOBILE TOURS

October 13, 2008

9:15 a - noon ➤

M-1 Art in Public Places

The Office of Public Art has published an exciting guide to art in public places in downtown Pittsburgh. No matter where you are downtown, you are steps away from experiencing a work of art. While enjoying a tour of the downtown neighborhoods, participants will experience a dynamic and remarkable collection of artwork by nationally & internationally recognized artists. Since many of the artists were inspired by our region when they created their pieces, the tour is also a great way to learn about Pittsburgh's place in history. In addition, the Office of Public Art is a unique public private partnership between the Greater Pittsburgh Arts Council and the City of Pittsburgh Department of City Planning. The Office of Public Art is funded by The Heinz Endowments. Additional funding for publications and walking tours was provided by The National Endowments for the Arts.

Hosted by KIM BAKER, City of Pittsburgh Public Arts Manager



M-2 South Hills Light Rail Transit and Transit Revitalization Investment Tour

Ride Port Authority's Light Rail System and learn about TOD planning in two suburban areas. Boarding at the Station Square Station, tour participants will ride the Beechview Line to Dormont and Mount Lebanon to hear about planning for Transit Revitalization Investment Districts in those communities. The tour will continue to Castle Shannon where it will transfer to the Overbrook Line for the return to Station Square. Those who want to return to the conference hotel can alight here. The tour will continue to Downtown Pittsburgh where we will learn about TOD and multimodal connections at the First Avenue and Steel Plaza Stations.

Hosted by DAVID WOHLWILL, Port Authority of Allegheny County

M-3 History of Contemporary American City Planning Tour

If you want to explore the roots of American urbanism then you need to explore Pittsburgh. In no other city east of Chicago is the legacy of contemporary urban planning more clearly in evidence. Pittsburgh has hosted a pantheon of national planning figures including Fredrick Law Olmstead, Daniel Burnham, Frederick Bigger, H.R. Richardson, Charles Mulford Robertson, Harland Bartholomew, Clarence Stien and Robert Moses. As America's pre-eminent industrial city, Pittsburgh shaped planning methodology, defined progressive reform and launched urban renewal. The purpose of this tour is to allow participants to learn about the history of contemporary American City Planning through stories about, commentary on and direct experience of, Pittsburgh's built environment. Selected sites exemplify important movements in planning history including the Walking City, City Beautiful, The Parks Movement, Garden Cities, Urban Renewal and New Urbanism. Site visits will include, but are not

Cities of the past: America's places of the future

necessarily limited to, Mexican War Streets, Oakland/Schenely Park, Chatham Village, Gateway Center and Crawford Square.

Hosted by DRS. KEVIN PATRICK and D. WHIT WATTS of the Department of Geography and Regional Planning, Indiana University of Pennsylvania.

M-4 Preservation Pittsburgh

Preservation Pittsburgh began with the demolition of a City landmark—the Syria Mosque in the Oakland section of Pittsburgh. The loss of this acoustically perfect and much-loved concert hall [the location is now a surface parking lot] convinced a group of concerned citizens that there needed to be a grass-roots, activist preservation organization to complement existing preservation groups so that they could work in tandem or alone when necessary. Preservation Pittsburgh will consider itself successful when Pittsburgh communities embrace their unique character and sustain their future through careful stewardship of their historic resources. This tour will include the Mellon Arena, the historic context of the building & its surroundings, and its questionable future.

Hosted by STEVEN PAUL, Preservation Pittsburgh; ROB PFAFFMANN, Preservation Pittsburgh

M-5 PennDOT Road Safety Audit – Thumbnail Version

A Road Safety Audit is an examination of an existing roadway or intersection by an independent, qualified audit team. At the conclusion of the audit, the team members prepare a report on safety issues that is submitted to the hosting municipality for consideration. Professional planners are uniquely qualified to serve on Road Safety Audit teams. The appropriate city, county, transit and state officials will be contacted by PennDOT and invited to assist with conducting this workshop. The workshop will begin with approximately 30 minutes of explanation of the process and the materials that the team will be using while conducting the audit. These materials will include examples and diagrams of proven safety products that have shown to reduce crashes and the severity of crashes. All of these products are PennDOT approved for use on highways, roads and streets in our state. Crash statistics will be reviewed for the subject roadway/intersection. Methods for obtaining this crash data will be discussed. The participants will then field view an intersection near (within walking distance) the conference location. All participants will be provided

safety vests and the safety of the participants will be stressed at all times during the workshop. After the field view a report will be written and presented to an individual who is acting in a “host official” capacity. At the conclusion of the presentation the participants will be debriefed on the Road Safety Audit process and provided information on how they can schedule the training in their area.

Hosted by BOB GARRETT, PennDOT Bureau of Municipal Services

M-6 East Liberty Development, Inc.

Once the third largest retail district in Pennsylvania, Pittsburgh's East Liberty neighborhood endured one of the most destructive Urban Renewal Projects the nation had ever seen. While well-intentioned, the end result of the government-driven project left the commercial core in economic and physical shambles. Since the late 1970's, the neighborhood has seen a long transformation from one of the region's most distressed communities to a national model for stakeholder driven sustainable redevelopment. East Liberty Development, Inc. (ELDI), the community development corporation, has partnered with many groups to facilitate over \$600 million in development in the last 10 years alone. The neighborhood is stabilizing and positioned for more changes that right the wrongs of Urban Renewal, welcoming employers, housing for all, and sustainable infrastructure and parks. Tour participants will have an opportunity to witness successful revitalization and development projects firsthand.

Hosted by: NATHAN WILDFIRE, Sustainable Policy Coordinator

M-7 The Evolution of South Side Works

South Side Works, located on the site of a former steel mill in the heart of Pittsburgh's Side Side neighborhood, is perhaps the most successful example of brownfield redevelopment in the United States. When PPA last visited the site in 2004, the very first of the buildings had been completed and were open for business. Join us four years later to see how much has been completed and what is left to do. The Monongahela riverfront, arguably the most valuable part of the property, is currently being conceptualized and developed. The \$10.5 million South Shore Riverfront Park is under construction. Learn how the mix of uses has been carefully designed and tailored to create both economic activity and quality of life.

Hosted by PAUL CONNER, Environmental Planning & Design

1:45 -5:00 p ▶



HOTEL INFORMATION



Sheraton Station Square Hotel
300 West Station Square Drive
Pittsburgh, PA 15219

Room Rate:

\$149.00 single/double per night, plus applicable state and local taxes. Parking rate is currently \$16.00 per vehicle per 24-hour period, and is subject to change.

For reservations, please call 412-261-2000 and ask for reservations. Please identify your group as the PA Chapter of the American Planning Association conference to receive our reduced rate.

You may also register via the internet by visiting

<http://www.starwoodmeeting.com/Book/PLANNING>

Getting to the conference:

Driving: Visit the hotel web site for driving directions at:

<http://www.starwoodhotels.com/sheraton/property/area/map.html?propertyID=693>

Please don't drive alone! **Consider carpooling!** To find others interested in carpooling to the conference, please visit the PA Chapter Web site's Planners' Information Exchange at <http://www.planningpa.org/phpBB2/>, and arrange to share a ride! Note that you will need to register to use the site, if you are not already a registered user!

Flying: Air fares into Pittsburgh from other major markets may be a good option this year. Please check with your local airlines for additional information.

Amtrak: Amtrak offers a 10% discount off the lowest available rail fare to Pittsburgh, PA between October 10, 2008 – October 15, 2008. To book your reservation call Amtrak at 1 (800) 872-7245 or contact your local travel agent.

Conventions cannot be booked via Internet. Please be sure to refer to Convention Fare **Code X835-937** when making your reservation. This offer is not valid on the Auto Train and Acela Service. Fare is valid on Amtrak Regional for all departures seven days a week, except for holiday blackouts. Offer valid with Sleepers, Business Class or First Class seats with payment of the full applicable accommodation charges.





2008 ANNUAL CONFERENCE REGISTRATION FORM

PA Chapter of the American Planning Association

CIRCLE APPLICABLE FEES

Full Registration Sunday/Monday/Tuesday

includes receptions, conference meals and breaks (mobile tours additional)

Conference Early Bird – received by September 15, 2008

PPA MEMBER	NON-PPA MEMBER*	GUEST**
\$250	\$280	\$175

Conference Regular Registration – received after Sept. 15, 2008

\$275	\$305	\$200
-------	-------	-------

Partial Registration

includes conference lunches and breaks (mobile tours additional)

Monday (Register separately for evening Reception)

Tuesday

\$150	\$180	\$ 80
\$150	\$180	\$ 80

Planning Official*** (per day), includes lunch and breaks

☐ Monday ☐ Tuesday ☐ Both

\$ 80	\$ 90	\$ 50
-------	-------	-------

Full Time Student includes lunch and breaks

Monday AND Tuesday includes breaks and meals

Monday OR Tuesday includes breaks and meals

\$ 50	\$ 50	\$ 50
\$ 40	\$ 40	\$ 40

Sunday Reception – Manchester Craftsmen's Guild (if not included in package)

\$ 40	\$ 50	\$ 40
-------	-------	-------

Monday Reception – Grand Concourse (if not included in package)

\$ 40	\$ 50	\$ 40
-------	-------	-------

Mobile Workshop Tours (cost per tour)

\$ 20	\$ 25	\$ 20
-------	-------	-------

Number of Mobile Workshops attending: _____ Total cost of Mobile Workshops: \$ _____

Golf – Sunday a.m. tee times. \$50.00 includes greens fee and cart.

\$ 50	\$ 50	\$ 50
-------	-------	-------

TOTAL REGISTRATION FEES \$ _____

Scholarship Contribution: I am pleased to contribute to the PA Chapter Scholarship Fund. All funds are divided between the Pitkin Fund and the Spaulding Fund. Each fund provides resources for scholarships for students pursuing a planning degree. Donations are tax deductible.

Amount of Donation: \$ _____

Total Fees Enclosed: \$ _____

Please help us to plan our meals more effectively by indicating if you plan to attend the following:

- ☐ Sunday Evening Welcome Reception ☐ Monday Evening Reception
☐ Monday Continental Breakfast ☐ Monday Luncheon
☐ Tuesday Continental Breakfast ☐ Tuesday Luncheon

Please complete registration form and return with payment to: PA Chapter of APA, 587 James Drive, Harrisburg, PA 17112

Please complete a separate form for your guest, if applicable.

NAME _____ NICKNAME FOR BADGE _____

TITLE _____ AGENCY _____

ADDRESS _____

CITY _____ STATE _____ ZIP _____ EMAIL _____

PHONE () _____ FAX () _____

DO YOU HAVE ANY ADA-RELATED SPECIAL NEEDS? PLEASE SPECIFY: _____

DO YOU HAVE ANY FOOD ALLERGIES OR SPECIAL DIETARY NEEDS? PLEASE SPECIFY _____

EMERGENCY CONTACT INFORMATION: NAME: _____ PHONE: _____

ARE YOU A LOCAL PLANNING OFFICIAL? ☐ YES ☐ NO

PAYMENT BY CREDIT CARD: ☐ VISA ☐ MASTERCARD

CARD # _____ EXPIRATION _____ FINAL 3-DIGIT # FROM BACK OF CARD _____

BILLING ADDRESS FOR CREDIT CARD _____

SIGNATURE _____ PRINT NAME _____

PAYMENT BY CHECK PAYABLE TO:

PA Chapter of the American Planning Association

Questions? Call (717) 671-4510 or email
mawirick@shermer-assoc.com

Faxes may be sent to PA Chapter at 717-545-9247

*Join the PA Chapter of APA while at the conference and receive 50% off dues for the first year.

**Guests are entitled to applicable meal functions and breaks. Guest fees do not include educational sessions.

***Planning Official = Elected or appointed official (non-professional).

Please complete reverse side of form ➡

2008 PA Chapter of the American Planning Association Annual Conference
SESSION PREFERENCE FORM

PLEASE COMPLETE AND SUBMIT WITH REGISTRATION FORM

Monday, October 13 9:15 – 10:15 a

- ☐ **1.** Making the Land Use and Transportation Connection: Route 30 Master Plan
- ☐ **2.** Lackawanna-Luzerne, A Case for Joint County Planning
- ☐ **3.** Green-Lining Your Community
- ☐ **4.** How Healthy (Or Sick) is your Zoning Ordinance?
- ☐ **5.** Developing Regional Long Range Transportation Plans - PennDOT Guidance Update
- ☐ **6.** Sustainable Growth in Rural PA: Union County's New Model

Monday, October 13 9:15 – 11:45 a
(Two-hour sessions with a break at 10:15)

- ☐ **7.** Pennsylvania Land and Community Education - PA Land Choices - A Workshop for Planners on Educating General Citizens and Teachers
- ☐ **8.** Administering the Zoning Ordinance: A Mock Zoning Hearing
- ☐ **9.** Ethics

Monday, October 13 10:45 – 11:45 a

- ☐ **10.** Measuring Growth and Market Impacts to Build Your Comprehensive Plan: The Case of Cranberry Township
- ☐ **11.** Transit Revitalization Planning - Strategy for 21st Century Community Regeneration
- ☐ **12.** The Future of Zoning in Pennsylvania: Form-Based Ordinances
- ☐ **13.** Economic Impacts of the I-80 Toll Conversion Study
- ☐ **14.** Using the Pittsburgh Neighborhood and Community Information System to Enhance Community Planning
- ☐ **15.** Greenprint: Planning for Climate Change

Monday, October 13 1:45 – 2:45 p

- ☐ **16.** Creating Sustainable Community Parks
- ☐ **17.** Promoting Walking & Biking to School: PA's Safe Routes to School Academy Program
- ☐ **18.** Parks of the Past: Neighborhoods of the Future
- ☐ **19.** Planning for Fresh Food Retail
- ☐ **20.** Transportation Impact Fees in PA
- ☐ **21.** Update/Status Report on Required Training Task Force, MPC Revisions and Other Legislative Issues
- ☐ **22.** A Better Way to Zone
- ☐ **23.** Back to Basics!! in Community Planning
- ☐ **24.** Financing Economic Development in Tough Times and in Tough Locations

Monday, October 13 3:15 – 5:15 p

- ☐ **25.** Outdoor Lighting Issues for Planners and Municipalities
- ☐ **26.** Finding Hidden Opportunities: Understanding Infill, Redevelopment and Replacement
- ☐ **27.** Rural Corridors and Communities: A Case Study of the Northern Tier
- ☐ **28.** Smart Transportation Solutions for Pennsylvania and New Jersey

- ☐ **29.** Reinhabiting Campus Neighborhoods
- ☐ **30.** Interpreting and Designing Subdivisions
- ☐ **31.** Planning and Implementing the Green City: Stormwater Management and Site Planning in Philadelphia
- ☐ **32.** PA DCED Planning Policy Forum
- ☐ **33.** AICP Exam Prep Session

Tuesday, October 14 10:15 – 11:15 a

- ☐ **34.** Incorporating Conservation Easements into Comprehensive Land Use Planning
- ☐ **35.** Historic Resource Planning through the Transportation Lens
- ☐ **36.** GreenPlan Philadelphia: The City's Blueprint for Sustainable Open Space
- ☐ **37.** Economic Analysis: Right Numbers, Right Results
- ☐ **38.** The Positive Impact of Latinos on Rural and Urban Environments
- ☐ **39.** Zoning Limitations
- ☐ **40.** Planning and Legal Challenges in the Drive to Develop Alternative Energy Sources
- ☐ **41.** Regulating Digital Billboards and Signs
- ☐ **42.** New Planners – What Employers are Looking For!

Tuesday, October 14 1:45 – 2:45 p

- ☐ **43.** Eliminating Blight: It's Role in Making Cities...Places of The Future in Pennsylvania
- ☐ **44.** Wireless Communications Infrastructure — Why You Need It, and How to Zone It
- ☐ **45.** Using and Understanding the American Community Survey
- ☐ **46.** Recent Pennsylvania Department of Environmental Protection Policies and Legislation Impacting Land Use
- ☐ **47.** The Philadelphia Story: A Civic Vision for the Central Delaware
- ☐ **48.** Green Building/Green Planning
- ☐ **49.** Pittsburgh's Rail Trails and Industrial Archaeology: An Opportunity for Historic Preservation and Education
- ☐ **50.** Redesigning Urban Streets as Civic Assets - Penn Avenue Corridor Phasing Plan
- ☐ **51.** Updates on Emergency Management: The More Things Change, the More They Stay the Same

Monday, October 13 9:15 a - noon

- ☐ **M-1** Art in Public Places
- ☐ **M-2** South Hills Light Rail Transit and Transit Revitalization Investment Tour
- ☐ **M-3** History of Contemporary American City Planning Tour
- ☐ **M-4** Preservation Pittsburgh

Monday, October 13 1:45 -5:00 p

- ☐ **M-5** PennDOT Road Safety Audit – Thumbnail Version
- ☐ **M-6** East Liberty Development, Inc.
- ☐ **M-7** South Side Works

FEE AND REFUND POLICIES:

The registration fee includes all applicable conference sessions and materials, and the meals listed herein. It does NOT cover lodging, all non-conference meals, and travel expenses.

A registered conference attendee may, upon written request, receive a full refund of a paid registration fee as long as the request is received by the PA Chapter office by September 30. If received after September 30 but before October 6, a refund will be issued less a \$50 administrative fee. If the request is received after October 6, no refund will be given.

NO SHOWS WHO HAVE REGISTERED BUT NOT PAID ARE STILL LIABLE FOR THE REGISTRATION FEE.

In the unlikely event of cancellation of the conference, the Pennsylvania chapter of the APA's liability is limited to 100% refund of registration fees and does NOT include penalty fees on travel tickets, deposits for hotel accommodations, or any other incurred expenses.

M.S. in Community and Regional Planning

“Communities *and* Careers in the Making”

Two locations:

- ✓ Temple University Ambler*
- ✓ Temple University Harrisburg

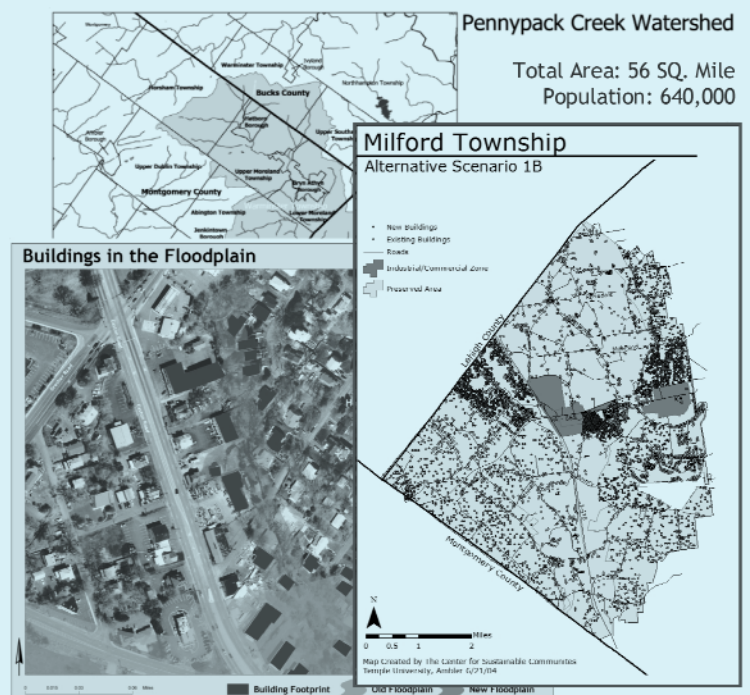
* B.S. also offered at Ambler campus

Temple offers:

- ✓ Convenient evening classes to meet needs of working professionals
- ✓ Applied research and community service opportunities through the Center for Sustainable Communities.

Sample (M.S.) Courses:

- ◆ Environmental Planning
- ◆ Geographic Information Systems (GIS)
- ◆ Internship in Planning
- ◆ Land Use Planning
- ◆ Planning Studio
- ◆ Planning Theory, Research Methods, and Law
- ◆ Spatial Analysis Techniques/GIS
- ◆ Transportation Planning



Community and Regional Planning

Department of Community and Regional Planning
580 Meetinghouse Road
Ambler, PA 19002
267-468-8300
www.ambler.temple.edu
www.temple.edu/harrisburg
crp@temple.edu
