



THE VANTAGE POINT



American Planning Association
Pennsylvania Chapter

Making Great Communities Happen

A Publication of the Pennsylvania Chapter of the American Planning Association

Election Results Announced

PA Chapter of APA congratulates the following newly elected officers who will serve from January 1, 2014 to December 31, 2015:

President
Brian N. O'Leary, AICP

Vice President
James Cowhey, AICP

Secretary
Amy McKinney

Treasurer
Pam Shellenberger, AICP

Many thanks to these individuals for their willingness to serve the Chapter.



2013 PA Chapter of APA

Award Winners

The Best and Brightest recognized at the Annual Awards Luncheon in Harrisburg!

The Pennsylvania Chapter of the American Planning Association (PA Chapter of APA) held its Annual Awards Luncheon in Harrisburg, PA where 470 attendees celebrated the esteemed award winners of this year's highly competitive program. The following individuals and organizations were honored for their excellent contributions to planning in Pennsylvania. **Congratulations!**

The following awards were presented:



Daniel Burnham Award for a Comprehensive Plan
Positively Altoona, the City of Altoona's Comprehensive Plan
City of Altoona

Positively Altoona was born from uniquely critical circumstances – decades of decline that called for new planning solutions and fiscal recovery under Pennsylvania's Act 47. City planners ensured both were intertwined. Planning goals considered the cost to the average homeowner, and comparisons of finances with similar cities. The plan engaged and energized the community when it was most needed. It has the city moving forward to revitalize itself, reuse blighted properties, make needed investments, and showcase its unique character and assets. It gave a renewed vision of hope for a distressed city.

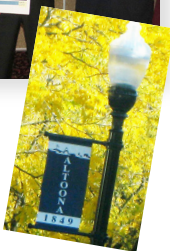
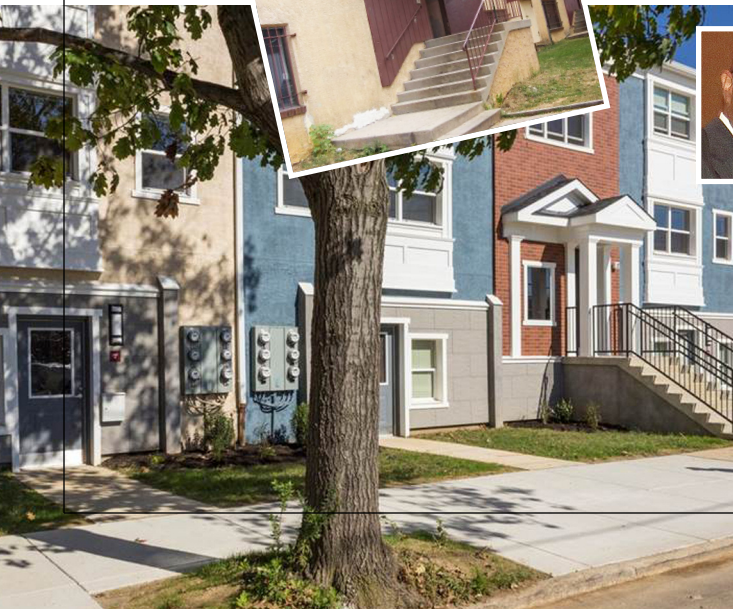
Opportunity and Empowerment Award
Mantua Transformation Plan
Mt. Vernon Manor Board of Directors

The Mantua Transformation Plan was undertaken under HUD's Choice Neighborhoods Initiative Program to improve the Mt. Vernon Manor Apartments and surrounding neighborhood in Philadelphia. Most of the goals aimed to help people – quality education, economic self-sufficiency, healthy lifestyles, and safety. Partners stepped forward to help – Drexel University, Philadelphia Police Department, Philadelphia Foundation. Early results included formation of a civic league, community home and school association, and a youth recreation program.

Mantua before.



Mantua after.



CONTINUED ON PAGE 2



2013 PA Chapter of APA

Award Winners

CONTINUED FROM PAGE 1

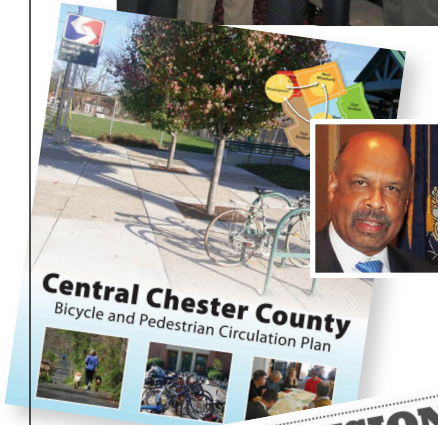
Congrats



Planning Excellence Award – Plan Other Than a Comprehensive Plan

Business Route 62 Corridor Study
Mercer County Regional Planning Commission
Shenango Valley Area Transportation Study MPO

The Business 62 Study dealt with one of Mercer County's busiest corridors in an innovative way. It recommended all low- to moderate-cost improvements, improvements nonetheless that would have high impact in reducing vehicle congestion, and make it better for pedestrians and bicyclers, and help the development in the corridor. Plan recommendations were varied and tailored to the downtown, transition, and suburban parts of the corridor. The plan provided detailed steps on how to implement the recommendations. It led to no-nonsense talk with PennDOT. After six months, several projects were already being designed or underway.



Central Chester County
Bicycle and Pedestrian Circulation Plan



Planning Excellence Award – Plan Other Than a Comprehensive Plan

Central Chester County Bicycle & Pedestrian Circulation Plan
Chester County Planning Commission

The Chester County Planning Commission worked with seven municipalities to prepare a coordinated action plan to address transportation, public health, and the environment through improvements to walking, bicycling, and public transportation. The plan is well-written and well-organized. Twenty-three partners built consensus to identify "missing links" in the transportation systems plus cost estimates and priorities for implementation. The plan also made regulatory recommendations for local ordinances and official maps.



Planning Excellence Award – Public Outreach

Make Your Mark! Lower Lancaster Revitalization Plan
People's Emergency Center Community Development Corporation

Make Your Mark! brought together residents, community groups, local institutions, city reps, and businesses to create a revitalization plan for the Lower Lancaster Avenue area in Philadelphia. The community participated by a variety of creative outreach techniques. A vacant building was used as an open house, painted with chalkboard paint that allowed passers-by to chalk-mark it with ideas and opinions. Inside were a photo suggestion booth and hot-spot maps. "Postcards from the Future" were used in forums to get residents to articulate dreams for the future. Conventional meetings and a steering committee were also used. In all, over 1,000 residents were engaged in the plan.

Student Project Award

Aging with Our Communities: An Aging-in-Place Plan for Montgomery County
Temple University Graduate and Undergraduate Planning Studio

Temple University undergraduate and graduate planning students culminated a year-long academic focus on aging communities by preparing a plan for Montgomery County. The plan goal was to help seniors age in place. The plan is thorough and thoughtful, and includes specific recommendations for retrofitting single-family homes, accommodating accessory homes, making roads safer, and avoiding fraud. It presents a concept plan for clustered senior housing and identifies gaps in senior services. And it presents its own senior population projections down to the Census Tract level.



Thanks

THANKS TO THE MEMBERS of the Awards Committee for the time and hard work they contributed to carefully review all the awards submissions, and especially to Denny Puko for chairing the committee and presenting the Awards Program in Harrisburg.

Denny Puko, Chairman
Pennsylvania DCED

Robert M. Behling
South Heidelberg Township
Planning Commission

Cindy Campbell
Pennsylvania DCED

Graciela Cavicchia, AICP, PP
The Reinvestment Fund

Deborah Howe, PhD, FAICP
Department of Community
and Regional Planning,
Temple University

Brian O'Leary, AICP
Montgomery County
Planning Commission

Brandi Rosselli, AICP
Mackin Engineering

Vaughn Stebbins, AICP, GISP
Education Management
Corporation



Certificates of Merit

• **Plan Other Than a Comprehensive Plan**
Lehigh Riverfront Master Plan
City of Allentown



• **Public Outreach**
The Oakland 2025 Master Plan
Oakland Planning and Development Corporation
(Pittsburgh)



Planning Leadership Award – Professional Planner

John E. Pickett, P.E., AICP, Delaware County Planning Department

John Pickett was a planner and civil engineer with over 40 years' experience. He worked over 30 years at Delaware County Planning Department, director of both planning and community development since 1996. He was responsible for many successful plans and projects improving the county and its communities. John was active in PA APA and its forerunners since the early 1980s, most recently as its Vice President. He was the current chairman of the County Planning Directors Association of Pennsylvania. As an engineer, he was honored as Delaware County Engineer of the Year in 2006. John rarely pursued the spotlight and seldom sought the recognition he deserved. The nomination was submitted and this award is given posthumously.



Planning Leadership Award – Citizen Planning Advocate

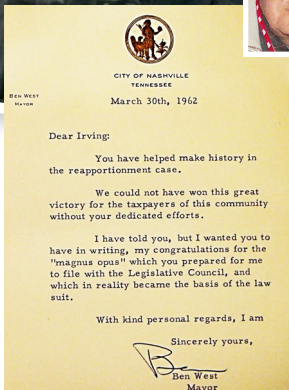
Ronald Buckalew, Harris Township and Centre Region Planning Commissions

Ronald Buckalew has devoted his last 24 years to being a citizen planner. He has been on his home Harris Township Planning Commission since 1989. Accomplishments have been an open space-clustering ordinance, official map, ridge overlay district, and riparian buffer ordinance. He served 18 years on the Centre Region Planning Commission and for 16 years was the representative on the Centre County MPO. He was active in the region's sewage facilities plan, a model well and geothermal borehole ordinance, and being an advocate for coordinated and multimodal transportation in the region.

Planning Leadership Award – Distinguished Service

Irving Hand, FAICP

Simply stated, Irving Hand exemplifies professional and personal excellence as a planner. His 60+ year resume includes nationally-recognized accomplishments and distinguished service to Pennsylvania. Prior to coming to PA, he was planning director in Tulsa, OK, and Nashville, TN. With Hand's leadership, the renowned Nashville and Davidson County governmental consolidation occurred. The original plan for metropolitan government was designated a Planning Landmark by the American Institute of Certified Planners. Also in Tennessee, Hand prepared demographic and reapportionment documentation instrumental in deciding the U.S. Supreme Court Baker v. Carr, "one man – one vote" case in 1962. He was director of the Pennsylvania State Planning Board from 1964 to 1972, serving three administrations and helping create the Municipalities Planning Code. In 1972 Hand became a professor in Penn State's graduate urban and regional planning program. While there, he established the Institute of State and Regional Affairs, PA State Data Center, and the Basic Economic Development Course, each of which have educated and served a wealth of planners and Pennsylvania. After retiring from Penn State in 1993, Hand's affiliation with Delta Development Group led to creation of an annual scholarship award for mid-career planning professionals. These and other efforts too numerous to mention merit recognition via PA APA's highest honor. ♦





PA Chapter of APA 2013 Annual Conference Recap

Photos by Amy Evans

HARRISBURG 2013

Supporters of the Scholarship Fund

Thank you to the following organizations and individuals for the donations of items for the Scholarship Raffle.

- Browns Orchard**
- Chester County/Golden Barrel-Good Food, Inc.**
- Chester County/Chadds Ford Winery; American Helicopter Museum; Brandywine River Museum; Dansko, LLC; Swarbustin' Honey; Longwood Gardens; To-Jo Fresh Mushrooms, Inc.; Wharton Esherick Museum; Neuchatel Swiss Chocolates**
- Clarion County Planning Commission**
- Delaware County / Brandywine CVB**
- Herr Foods, Inc.**
- Johnson, Mirmiran & Thompson, Inc. (cooler of goodies AND a basket of goodies)**
- Lehigh Valley Section of PA-APA/Crayola and the City of Easton**
- Lehigh Valley Section of PA-APA/Rodale Press**
- Lehigh Valley Section of PA-APA/City of Easton, City of Bethlehem, LANTA Shermer & Associates**
- Tri-County Regional Planning Commission**
- York County / York Revolution**

Thank you to these individuals for their donations to the scholarship fund.

- | | |
|---------------------------------------|--------------------------|
| Richard Bickel | Calvin Masilela |
| Delaware County Planning Dept. | Keith McGill |
| R. Steve Dellinger | Steve Pitoniak |
| Walter C. Evans | Michael Rimer |
| Crystal Gilchrist | Pam Shellenberger |
| Richard Hoch | Tracey Vernon |
| Dorothy Ives-Dewey | |
- and the countless others who bid on the raffle items!*



◆ 41 Concurrent Sessions



◆ Up to 12.25 CM credits including Law and Ethics



◆ Four mobile workshops



2013 CONFERENCE *Committee*

The 2013 conference was successful due in large part to the tireless efforts of the local conference committee. Many thanks to the committee for their hard work!

Committee Co-Chairs:

- Felicia Dell, AICP**, York County Planning Commission
- Diana Myers-Krug, AICP**, Tri-County Regional Planning Commission
- Tracey Vernon, AICP**, Vernon Land Use

Committee Members:

- Dennis Auker, AICP**, Auker Consulting
- Andy Batson, AICP**, Michael Baker, Jr., Inc.
- Michelle Brummer, AICP**, Gannett Fleming, Inc.
- Steve Deck, AICP**, Parsons Brinckerhoff
- Scott Dellest, AICP**, Gettysburg Borough
- R. Steven Dellinger, AICP**, Hanover Engineering Associates
- Scott Duncanson, AICP, LEED**, Gannett Fleming, Inc.
- Jessica Fieldhouse, AICP**, Mullin and Lonergan Associates, Inc.
- Joiann Galiano, AICP**, York County Planning Commission
- Bill Gomes, AICP**, Mifflin County Planning & Development
- Ralph Hess, East Buffalo, Kelly, White Deer Townships**
- Tara Hitchens, AICP**, East Lampeter Township
- Jamie Keener, AICP**, Herbert, Rowland & Grubic, Inc.
- Jeff Kelly, AICP**, Cumberland Co. Planning Commission
- Stan Lembeck, PhD, AICP**
- Jamie Lemon, Tri-County Regional Planning Commission**
- Andrew Merkel, AICP**, Adams County Office of Planning and Development
- Leah Pearlman-Storch, AICP**, Tri-County Regional Planning Commission
- George Pomeroy, PhD., AICP**, Shippensburg University
- Terry Ruby, AICP**, York County Planning Commission
- Dick Schmoyer, AICP**
- Pam Shellenberger, AICP**, York County Planning Commission
- Will Soper, Tri-County Regional Planning Commission**
- Deborah Tollett, AICP**, Delta Development Group, Inc.
- Meagan Tuttle, Borough of State College**
- Bryan Van Sweden, Bureau for Historic Preservation/Pennsylvania Historical and Museum Commission**
- Jerry S. Walls, FAICP**
- Brandon Williams, AICP**, Township of Derry



◆ *3 main sessions and Our State of the Chapter and our Annual Awards luncheon*





PA Chapter of APA 2013 Annual Conference Recap

CONTINUED FROM PREVIOUS PAGE

Thank you! With deep appreciation, we thank the sponsors, exhibitors and advertisers. Their support makes the conference possible. And a special thank you to the student volunteers from IUP.

Sponsors

Diamond Sponsor

4ward Planning, LLC

Platinum Sponsors

Indiana University of Pennsylvania,
Department of Geography and
Regional Planning
Marcellus Shale Coalition
School of Environmental Design,
Temple University
URS Corporation

Gold Sponsors

Gannett Fleming

Silver Sponsors

AECOM
CDM Smith
Johnson, Mirmiran & Thompson, Inc.
Kennedy & Associates
McCormick Taylor, Inc.
Michael Baker, Jr., Inc.

Exhibitors

4ward Planning, LLC
Barton & Loguidice, PC
CDM Smith
Gannett Fleming
Harrisburg University of Science &
Technology
Indiana University of Pennsylvania,
Department of Geography and
Regional Planning
Johnson, Mirmiran & Thompson, Inc.
LSL Planning, Inc.
Mackin Engineering
Marcellus Shale Coalition
Maser Consulting
PA Dept. of Conservation & Natural
Resources, Bureau of Recreation &
Conservation
PA Dept. of Community & Economic
Development
PA Land Trust
Parsons Brinckerhoff
PMPEI
Preservation Pennsylvania
School of Environmental Design,
Temple University
SSM Group
URS Corporation

Friends

Central Section of the PA Chapter
of APA
Southwest Section of the PA Chapter
of APA
Penn Design

Advertisers

4ward Planning
AECOM
Auker Consulting
Baker
Capital Area Transit
CDM Smith
David Miler/Associates, Inc.
Delaware Valley Regional Planning
Commission
The EADS Group
Fitzgerald & Halliday, Inc.



Gannett Fleming
Hanover Engineering Associates
Indiana University of Pennsylvania,
Department of Geography and
Regional Planning
Johnson, Mirmiran & Thompson
Keller Engineers, Inc.
Kennedy & Associates
LSL Planning, Inc.
Mackin Engineering
Marcellus Shale Coalition
McCormick Taylor
Preservation Pennsylvania
School of Environmental Design,
Temple University
Tri-County Regional Planning
Commission
URS Corporation
West Chester University


◆ *Over \$1300 raised for
the Scholarship Raffle*



APA Top PA Ten
Sayings of Pennsylvania Planners

1. Take this job and **SHOVE IT!**
2. DENIED!
3. I got to work late today, so I'll make up for it by leaving early.
4. Harness the power of the peanut. (I'm sorry, that's a Planners saying.)
5. Put **THAT** in your conditional use!



 Exhibits



ne

Professional Development Committee

Northeast Section Rep *wanted* Southwest Section Rep *wanted*

The Professional Development Committee includes a representative of each Section (selected by the Section Council) and additional at-large members (appointed by the Chapter President).

Please see more information on the Chapter website <http://planningpa.org/for-planners/professional-planners/professional-development-committee/>

This committee, led by Susan Elks, AICP, directs one of the most important and active missions of the Chapter – **facilitating continuing education opportunities and supporting AICP membership!**

Contact Andrew Hartwell, Southwest Section Chair, at andrew.hartwell@alleghenycounty.us or via phone at (412) 350-1360.

Contact Steve Pitoniak, Northeast Section Chair, at pitoniaks@lackawannacounty.org or via phone at (570) 963-6400.

SW



Vantage Point 2013 Editorial Deadlines

Spring Issue
Summer Issue
Fall Issue
Winter 2014-2015 Issue

February 7
May 9
August 8
November 7



INSIDER

A Message from President **Brian O'Leary, AICP**

For those of you who weren't able to make it to Harrisburg, we had a great conference – it was inspiring, educational, and lots of fun, with many opportunities to network and catch up with old friends. As the seat of Pennsylvania's government, Harrisburg was a great location to discuss state-wide issues, and the city, as always, was very walkable, with loads of restaurants, bars, and trails. Kudos to the Central Section, the conference planning committee, and everyone who helped bring about this great success.

There were many excellent sessions on a wide range of topics. I found the keynote speakers particularly inspiring. **Tom Murphy**, the ex-mayor of Pittsburgh, highlighted changing demographics and living preferences, noting how these trends have helped Pittsburgh revitalize. Pittsburgh's colleges and universities and their emphasis on high-tech research has also helped Pittsburgh – Google, for example, started with two employees at Carnegie Mellon in 2006 and now has over 200 employees at a renovated Nabisco cookie factory in Pittsburgh's east end.

Ron Littlefield, the ex-mayor of Chattanooga, discussed that city's revitalization and its focus on reinventing the waterfront, which went from a forgotten area of highways, vacant land, and railroads to a focal point of the community. He told an interesting story about Alstom, a French company that wanted to open up a turbine manufacturing facility in Chattanooga; however, they had one important final request that would seal the deal. Alstom wanted the city to extend its Tennessee Riverwalk trail to their factory; then they would come. It was a no brainer for Chattanooga, and now the city has a great new manufacturing facility plus a longer trail. Who said that trails, quality of life, and environmental stewardship can't lead to good jobs and economic development?

Holding the conference in Harrisburg always offers a great opportunity to interact with the state government. We had a good session with four legislators mostly talking about the transportation bill. Many thanks to **Kyle Guie** and **George Pomeroy** from the Legislative Committee for organizing this, and remember to add your voice to theirs and others in advocating for good planning. **Patrick Henderson** of the governor's office gave Tuesday's opening address on Pennsylvania's energy future, and **Dennis Auker** and **Peter Wulfhorst** organized interesting sessions on the Chapter's unconventional shale gas development strategy. More information on that will be coming soon. One thing is clear – shale gas extraction is here to stay, and we need to plan for it.

Overall, the conference was great. Next year is Philadelphia, which promises to be a fascinating location. Hope you'll be able to come.

Keep up the great planning work and advocating for a better future. ♦

Correction

JASON PRICE passed the May 2013 AICP exam. Although Jason works in PA, APA shows his membership through the New York Upstate chapter and not of the PA chapter. Sorry we missed recognizing his achievement!



American Planning Association
Pennsylvania Chapter

Making Great Communities Happen

587 James Drive
Harrisburg, PA 17112
717 671-4510 (P)
717 545-9247 (F)
www.planningpa.org

Susan Shermer, CMP
Administrative Director
sshmermer@shermer-assoc.com

Kim Gusic
Administrative Assistant
kdiep@shermer-assoc.com

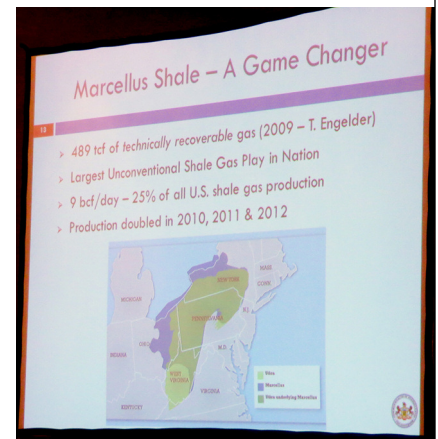
R. Keith McNally
Conference Coordinator
keithmcn@aol.com

The Vantage Point is published four times a year by the Pennsylvania Chapter of the American Planning Association and is available at www.planningpa.org. Material may be reprinted provided *The Vantage Point* is credited. The views expressed in *The Vantage Point* are not necessarily those of the PA Chapter of APA. Send comments and subscription requests to Susan Shermer, CMP at 717-671-4510 or sshermer@shermer-assoc.com.

The Vantage Point is printed on Roland Opaque30 Smooth Bright White 70# and contains FSC certified 50% post-consumer fiber. The paper is EcoLogo and FSC Mixed Sources certified and is manufactured using renewable biogas energy. Roland papers are produced by Cascades, an environmentally friendly company whose paper production practices saves 30 million trees a year. Inclusion in this newsletter of ads does not imply endorsement by PA APA.



Please help us close the loop and recycle this newsletter.





legislative update

by *Kyle Guie*, Legislative Committee Chair

Capital Insights: Perspectives from our Legislators – A GREAT SUCCESS!



AT THIS YEAR'S PA APA conference in Harrisburg, the legislative committee organized a fun and interesting panel discussion with four Pennsylvania State Representatives. Over 80 conference attendees had the opportunity to gain insights and perspective about the legislative process. The panelist included Mary Jo Daley from Montgomery County, Kate Harper from Montgomery County, Chris Ross from Chester County, and Robert Freeman from Northampton County. The discussion mainly focused on the transportation funding bill and long term transportation priorities. Hopefully by the time this article is published we will have a comprehensive transportation bill. We were fortunate to have the participation of the legisla-

tors and we look forward to hosting a similar panel at the next conference in Philadelphia!

Welcome New Members!

Five new members have joined the legislative committee: **Wes Ratko** – Montgomery County Planning Commission
Leann Chaney – Blairsville Community Development Authority
Kurt Hausmann – Lycoming County Planning Commission
Kathleen Colbert Gibson – Southwestern PA Commission
Evan Tobin – Graduate Student at the Indiana University of Pennsylvania.

Evan will now be the student representative on the legislative committee. He has a strong interest in planning and politics.

Looking for Two Members for Executive Committee

There are two vacancies on the executive committee and we want you. *We have openings for a vice chair and secretary.* The current executive committee includes Kyle Guie-Chair and Andrew Hartwell-Treasurer. If you are interested in talking about one of these positions or if you would like to be a member of the committee, contact Kyle Guie at kguie@gvftma.com or 610-354-8899.

Check Out this Powerful Tool www.openstates.org

Open States is an online application that allows anyone the ability to locate your legislator, review their votes, search upcoming legislation, and track bill progress. ♦

PA Chapter Executive Committee

PRESIDENT

Brian O'Leary, AICP
Montgomery County Planning Commission

INCOMING VICE PRESIDENT

James Cowhey, AICP
Lancaster County Planning Commission

INCOMING SECRETARY

Amy McKinney
Lancaster County Planning Commission

TREASURER

Pam Shellenberger, AICP
York County Planning Commission

LEHIGH VALLEY SECTION REPRESENTATIVE

Sara Pandl, AICP/RLA
Lower Macungie Township

NORTHEAST SECTION REPRESENTATIVE

Peter T. Wulffhorst, AICP
Penn State Cooperative Extension

NORTHWEST SECTION REPRESENTATIVE

Roy Brant, PhD
Crawford County Planning Commission

PAST PRESIDENT

Alexander J. Graziani, AICP
City of Latrobe

STUDENT REPRESENTATIVE

Ellen Hwang

Section Chairs

Central

Rachelle Abbott, AICP
STEP, Inc.

Lehigh Valley

Sara Pandl, AICP/RLA
Lower Macungie Township

Northeast

Steve Pitoniak
Lackawanna County Planning

Northwest

Roy Brant, PhD
Crawford County Planning Commission

Southeast

Martha Cross, AICP, PP, LEED AP
The Reinvestment Fund –
Development Partners

Southwest

Andrew Hartwell
County of Allegheny Department
of Economic Development

Committee Chairs

*Professional Development
Officer/Professional Development
Committee Chair*
Susan Elks, AICP

*Planning Officials Development
Officer/Chair of the Planning Officials
Development Committee*
vacant

Communications Committee Chair
Dennis Martinak, AICP

Education Committee Chair
vacant

2014 Conference Co-Chairs

Ron Bednar, AICP
Martha Cross, AICP, PP, LEED AP
Justiin Dula, AICP
Nando Micalle

*Legislative Committee
Chair*
Kyle Guie, Chair

**Contact information is
available at www.planningpa.org
under "About Us".**

THE PA CHAPTER IS PLEASED that FEMA Region III is providing our contribution to the chapters, divisions, and universities webcast series. The National Disaster Recovery Framework and Planning for Post-Disaster Recovery session will be held on December 6th. The National Disaster Recovery Framework is a guide that defines how a community can work together following a disaster to best meet recovery needs. This session will discuss the Framework's core principles as well as best practices and lessons learned from post-disaster recovery plans completed in communities in Pennsylvania. Registration is via the Utah Chapter of APA website at www.utah-apa.org/webcasts.

ARCHIVED WEBCAST PRESENTATIONS, which include seven AICP exam prep sessions, are available on YouTube at www.youtube.com/planningwebcast. Please note that at this time none are registered for distance education CM credits, but limited sessions should be made available for distance education CM in the coming months and will be clearly identified as such.

AS THE YEAR COMES TO AN END, keep in mind that another **CM reporting cycle** is also coming to a close. Every planner is automatically provided a grace period until April 30th of the following year, but why wait? There are a variety of CM events available to fulfill requirements. Sources of information include the APA-PA webpage for Professional Planners/For AICP Members, the webpage of AICP CM Opportunities, and the Calendar of Events. Options to fulfill CM requirements include section specific in-person events and the following:

- **Monthly Webcasts**

Registration and full information on the upcoming schedule on the Utah Chapter website.

- **PA Chapter Lending Library**

Six CD programs available at \$10.00 rental fee per program, including law and ethics programs. Programs earn a range of 1-2.25 CM credits.

- **APA**

APA has a webpage dedicated to free CM training, currently including more than 25 free online credits.

APA HAS REVAMPED the Advanced Specialty Certification for Transportation – Certified Transportation Planner. If you have considered the exam in the past, please take another look.

<http://www.planning.org/asc/transportation/> ◆

AICP EXAM PREP



If you are preparing to take the AICP exam in 2014, keep an eye on the Chapter's website and email blasts. We will again be holding an all-day prep session on Saturday, March 8 in the Harrisburg area. This session goes into detail to how to prepare as well as reviewing test content and providing ample opportunity for questions.



planner notes...

JAMIE KEENER *to Lead Eastern Region Sales Efforts for HRG*

HERBERT, ROWLAND & Grubic, Inc. (HRG) recently named Jamie Keener, AICP as Senior Sales Executive of the firm's Eastern Region. In this role, Keener is responsible for driving business development activities, identifying and tracking new client leads, managing proposal and qualifications package development, and for client management.

Keener joined the firm in January of 2005 with 18 years of experience and was named a Shareholder in 2007. Prior to taking on this new role, he served as the Director of Land Development Services. Originally from Shippensburg, PA, he earned his bachelor's degree in geography from Bucknell University and began his career in York, PA. Additionally, he sits on a variety of HRG's internal committees and is deeply involved in several community and industry organizations.

"Jamie brings value in this sales role with his ability to cultivate relationships" stated company President and CEO Robert C. Grubic, P.E. "This, coupled with his diverse knowledge of HRG's services and the market as a whole is an asset as we seek growth and expansion opportunities." ◆





welcome
New PA Chapter Members!

WE WELCOME THE FOLLOWING NEW MEMBERS who joined the PA Chapter over the past few months. The PA Chapter membership includes nearly 2,600 planning officials, professional planners, and others who care about how Pennsylvania continues to grow the places where we live, work, and enjoy recreation. The board and staff are available to answer any questions. Feel free to contact the Chapter Office at 717-671-4510. Board member contact information is available at www.planningpa.org under **About Us**.

Individual Members:

Elizabeth Crager, *Southeast Section*

Darren Johnson, *Southwest Section*

Robert Keppel, *Southeast Section*

Organizational Members:

Lancaster County Planning Commission,
Central Section ♦

Central Section Update

by *Rachelle A. Abbott, AICP, Central Section Chair*

Central Section Council Has Much to Offer...

The Central Section has had a very busy Fall! Many Central Section Members were involved in the planning, organizing, and execution of the Pennsylvania Chapter's Annual Conference held in Harrisburg in October. Overall, the conference was very well attended, educational, and offered many opportunities for networking. Be sure to mark your calendar for next year's conference to be held in Philadelphia on October 12 - 14.

The Central Section partnered with other organizations, including Pennsylvania Department of Conservation and Natural Resources (DCNR) and Lebanon Valley Bicycle Coalition to hold AASHTO's Bicycle Facility Standards Workshop on September 26, 2013. With over fifty in attendance, the day went quite well. Given the positive partnership, Central Section plans to continue to look for mutually beneficial opportunities for partnerships in the future.

Are you providing a planning program for youth in your community? Are you providing a planning curriculum in connection with a school to get students interested in planning? If so, Central Section may be able to help with its **Youth Planning Program Sponsorship** to support the development, purchase, or implementation of a youth planning event, curriculum, or activity. To apply for support, please provide a letter of interest, amount needed, and information about the program to Rachelle Abbott, AICP at raabbott@stepcorp.org.

Central Section is also excited to announce that it is offering **financial support to municipalities and partners** offering Pennsylvania Municipal Planning Education Institute (PMPEI) courses. Host municipalities or organizations can receive \$300 to assist with the cost of having a PMPEI Course in your community. PMPEI Courses are an excellent tool for citizen planners and others interested in planning to understand Pennsylvania's Municipalities Planning Code. If your municipality or organization plans to sponsor a PMPEI Course in the next year, please contact Pam Shellenberger of the Central Section Council at pshellenberger@ycpc.org and submit a letter detailing the date, time, location, and type of course you will be offering. For more information about hosting a PMPEI Course in your community, contact Stan Lembeck at sml1@psu.edu.

Are you a citizen planner who wants to get more involved in the Central Section? If so, contact Rachelle Abbott at raabbott@stepcorp.org. Join a great group of planners who are

working to provide valuable opportunities for Central Section members, it will be worth your time!

Be sure to keep a look out for information on Central Section's Spring Workshop, to be held in Harrisburg in early May. CM Credits will be offered. For a complete listing of all Central Section Council members and their contact information, please visit <http://planningpa.org/sections/central>.

Northeast Section Holiday Meeting and Luncheon

The APA-PA Northeast Section Holiday Meeting and Luncheon will be held on Friday, December 20, at Armetta's Restaurant in Clarks Summit, PA

The Section will meet at 11:30 for a Section meeting, followed by the Luncheon and a presentation by Sally Corrigan, Executive Director of the Pike County Conservation District. Sally will provide an overview of the Conservation District and the Common Waters Initiative. In addition, several awards will be presented to various individuals who have made a contribution to planning and land use.

The cost is \$18 per person and the menu will be a catered buffet style. Cookies will be served for dessert.

Reservations are required. Please RSVP to Peter Wulfhorst, ptw3@psu.edu or 570-296-3400 x1445 OR Cindy Campbell, ccampbell@pa.gov or 570-963-4574 no later than Monday, December 16. ♦



Two partial scholarships

The PA Chapter of the American Planning Association will award two (2) partial scholarships for the 2014 AICP Exam testing cycles. The scholarship reduces the exam fee from \$495 to \$135 for first time AICP applicants and from \$425 to \$65 for previously approved AICP applicants.

Financial hardship is the primary consideration for the scholarship. Members of ethnic or racial minorities shall be given preference for the scholarship. Test applicants whose employer subsidizes the exam fee are excluded from consideration.

Keep an eye on the Chapter's website and email blasts for more information. ♦



Making Great Communities Happen
587 James Drive
Harrisburg, PA 17112

logon
www.planningpa.org