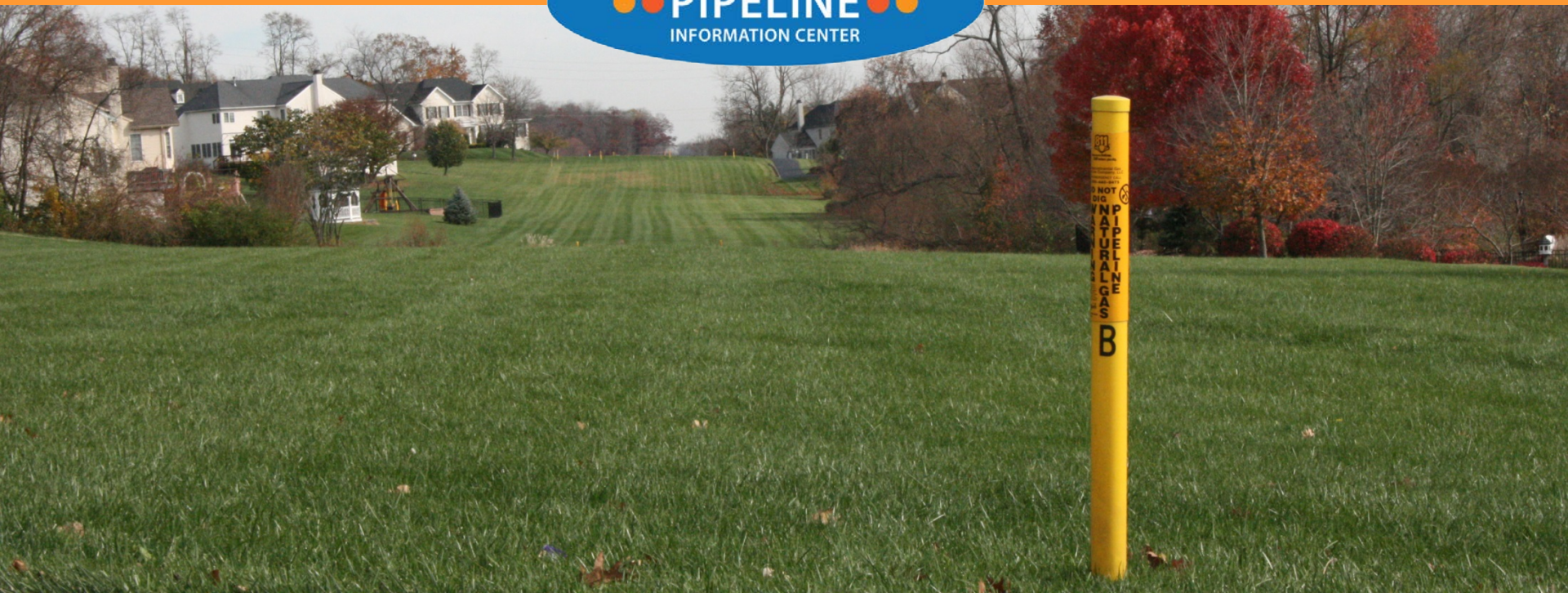
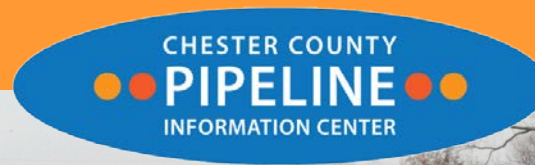


Under Pressure: People & Pipelines

“How to get the information you need to understand and manage pipelines”

2016 Annual APA-PA Conference
October 18, 2016



Carol Stauffer, AICP

Chester County

Planning Commission

www.chesco.org/planning/pipelines

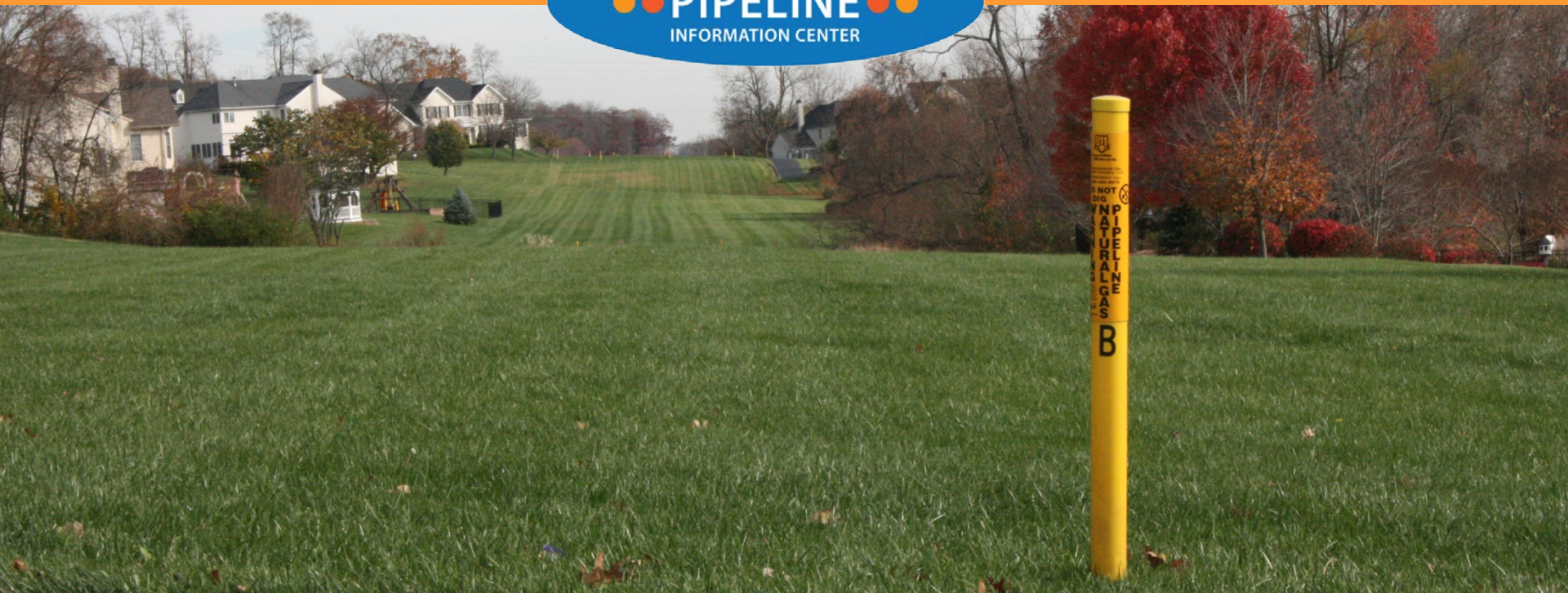
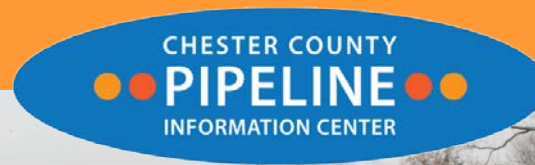
ccpipelines@chesco.org

John M. Gaadt, AICP

Gaadt Perspectives, LLC

www.gaadtperspectives.com

jgaadt@gaadt.com



Issues to Consider

- PA sits atop one of the largest deposits of natural gas in the world; volume of gas estimated in PA = more extraction wells than any other state but Texas
- Long term implications – approximately 20 years of drilling and 50 years of extraction
- Newer, bigger, higher pressure pipelines; upgrades from lower to higher PSI
- **Opportunities –**
 - ▶ Valuable resource (although the price is currently below the cost of production)
 - ▶ Cleaner than other forms of fossil fuels (emits about 50% less carbon when burned).
 - ▶ PA ideally suited to deliver gas (transportation accounts for approximately 40% of fuel costs)

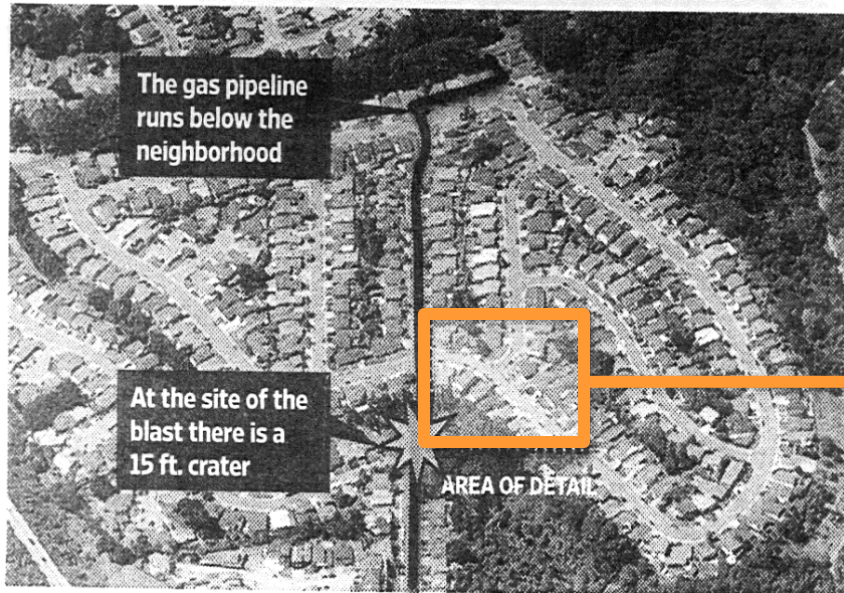
Issues to Consider (cont.)

- **Costs and Risks –**
- Pipelines, drilling pads and wastewater storage pits alter the landscape, fragment wildlife habitat, impact land use decisions (including property values)
 - ▶ Health impacts
 - ▶ Billions of gallons of water used to frack shale
 - ▶ Heavy rigs damage roads
 - ▶ Accidents and errors have contaminated land and drinking water
 - ▶ (Clearfield Co. discharge; Dimock Twp., Susquehanna Co. contamination)
 - ▶ Numerous state parks and forest lands are under lease for gas drilling (Ohio)
 - ▶ September '10 San Bruno, CA transmission pipeline explosion
 - ▶ The “Retirement Party” and the lack of a real National Energy Policy

San Bruno Transmission Pipeline Explosion

September 9, 2010

Before



After



Safety

- **Old Pipes** – San Bruno is not unique; many pipelines in PA are 50± years old
- Inadequate maintenance, Incorrect repairs, Leaks go undetected
- Residents unaware of pipelines
- NTSB Investigation of 2008 Fatal Pipeline Explosion in Rancho Cordova, California found as a major contributing factor the inability to quickly identify the source of the leak and the failure to evacuate the neighborhood
- Is maintenance spending keeping up with deterioration?
- Need a new focus on Maintenance Issues

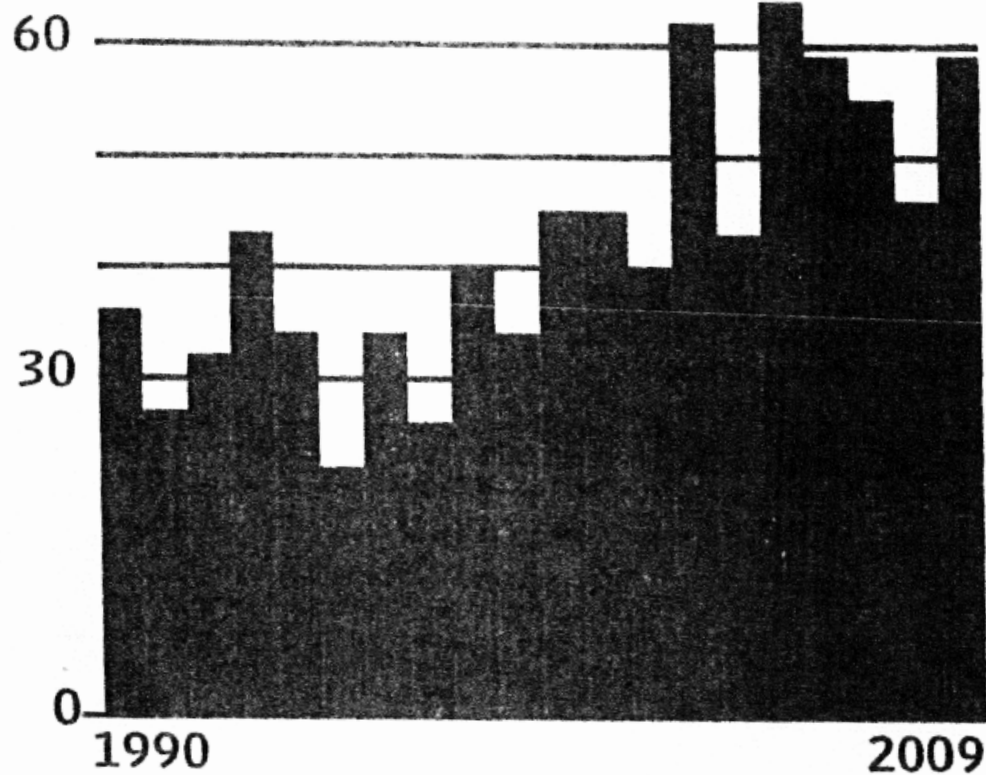
Safety (cont.)

- **Recent pipeline leaks and explosions in:**
 - ▶ **Allentown** – 600 people evacuated, 2 homes destroyed, 5 people killed
 - ▶ **Philadelphia** – Several injured, 1 person killed
 - ▶ **New York City** – 2 Apt. buildings, 8 killed, “aging infrastructure”



Incidents

SIGNIFICANT GAS PIPELINE INCIDENTS, ONSHORE



Wall Street Journal – 9/11/10

Need to find a balance:

Drilling and Transporting

v.

**Protection/Restoration of
Natural Environment; Health,
Safety and Welfare**

Moving forward

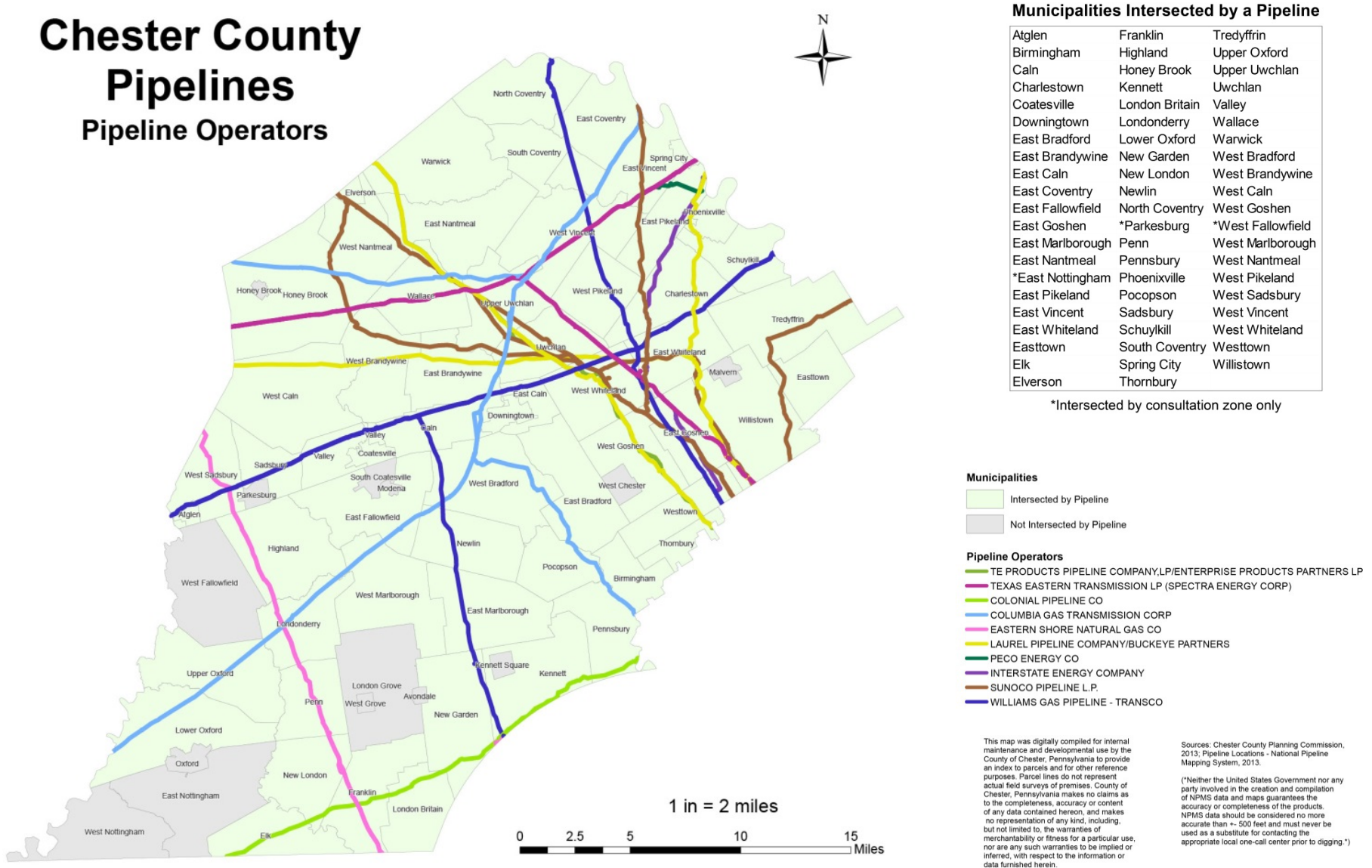
- **Federal** – FERC (Federal Energy Regulatory Commission); PHMSA (Pipeline and Hazardous Materials Safety Administration)
- Pipeline and Hazardous Materials Safety Administration (PHMSA); Pipelines and Informed Planning Alliance (PIPA)
- **PA Act 13** – consolidating and modifying the Oil and Gas Act of 1984; Recent Supreme Court Ruling
- PA Public Utilities Commission
- Municipalities Planning Code (MPC)
- State, County & Local Regulations/Ordinances in other communities
- What are the County and Municipal Roles in PA?

County Planning and Pipelines

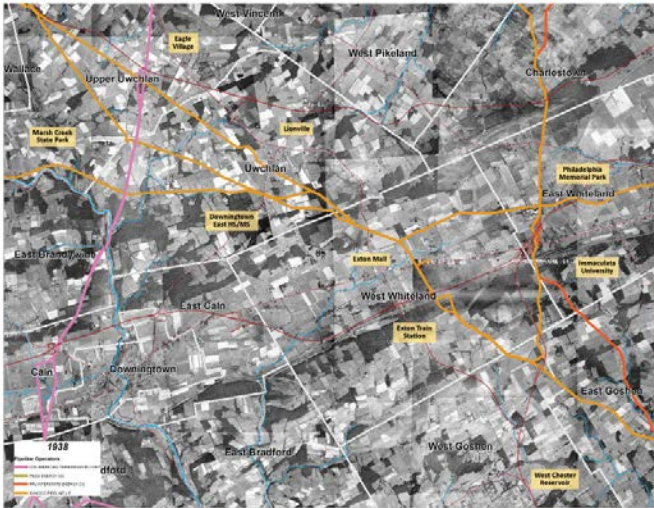
- Why is the Chester County Planning Commission involved in pipelines?
- What role does CCPC play in addressing pipeline issues?
- How is the Pipeline Information Center used to facilitate communication?

Pipeline Operators

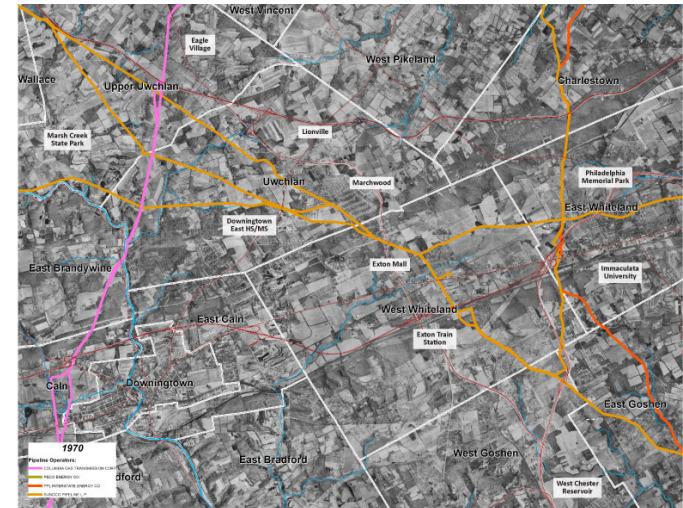
Chester County Pipelines Pipeline Operators



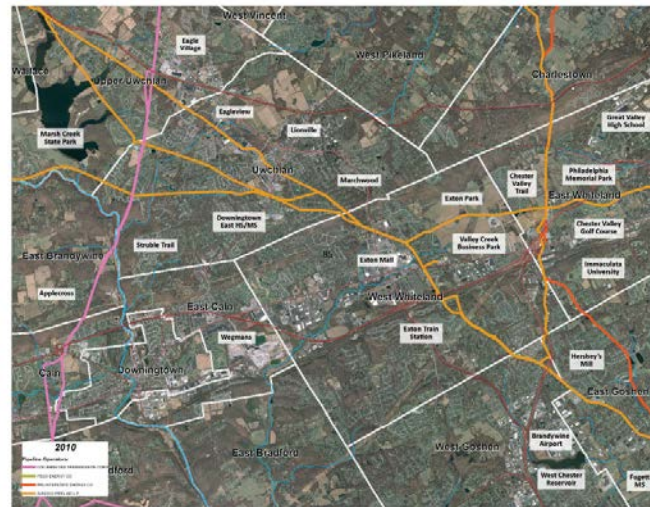
Exton Area – 1938 to 2010



1938

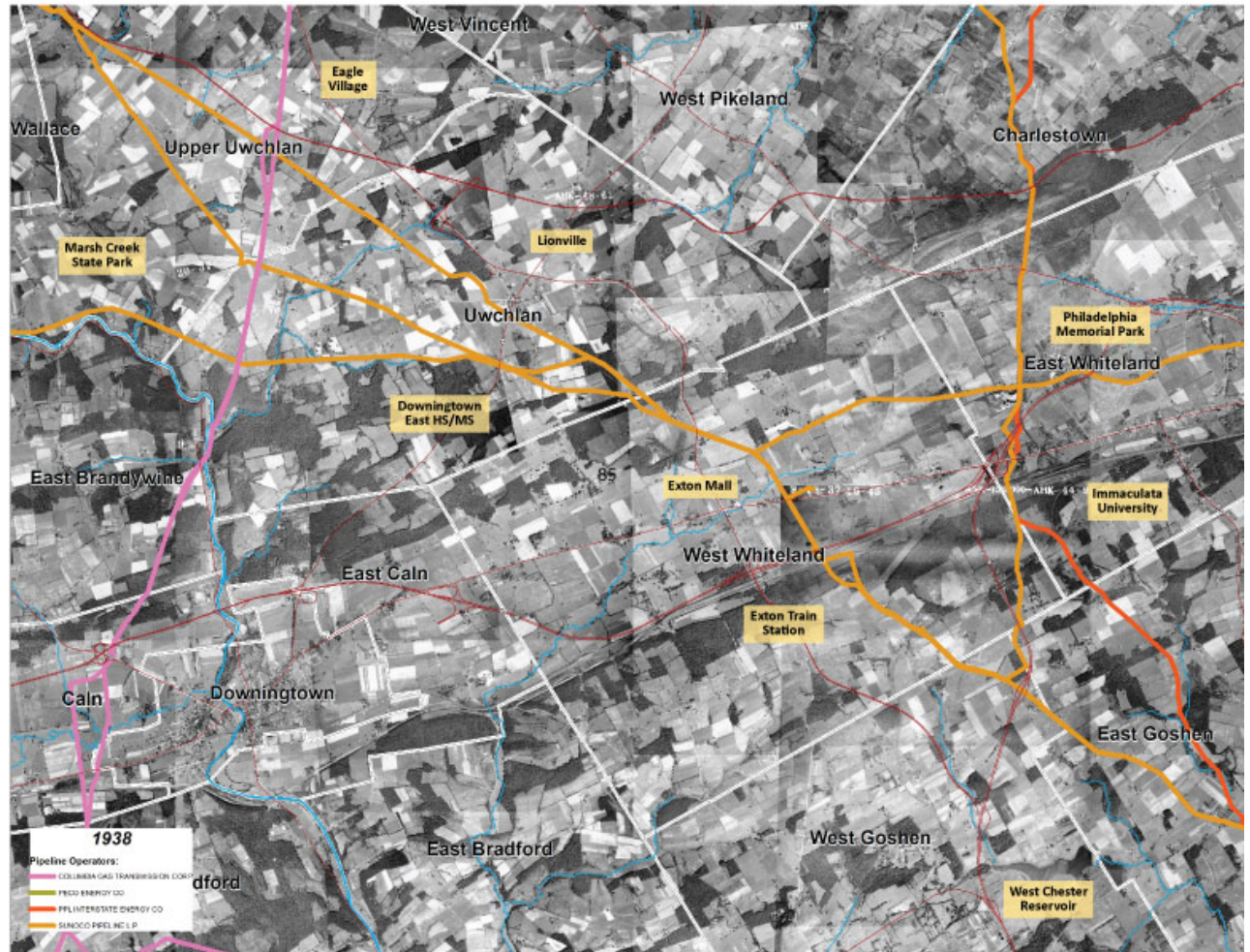
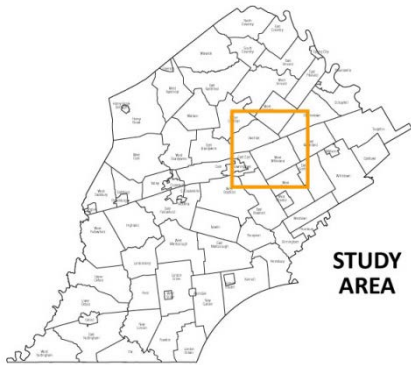


1970

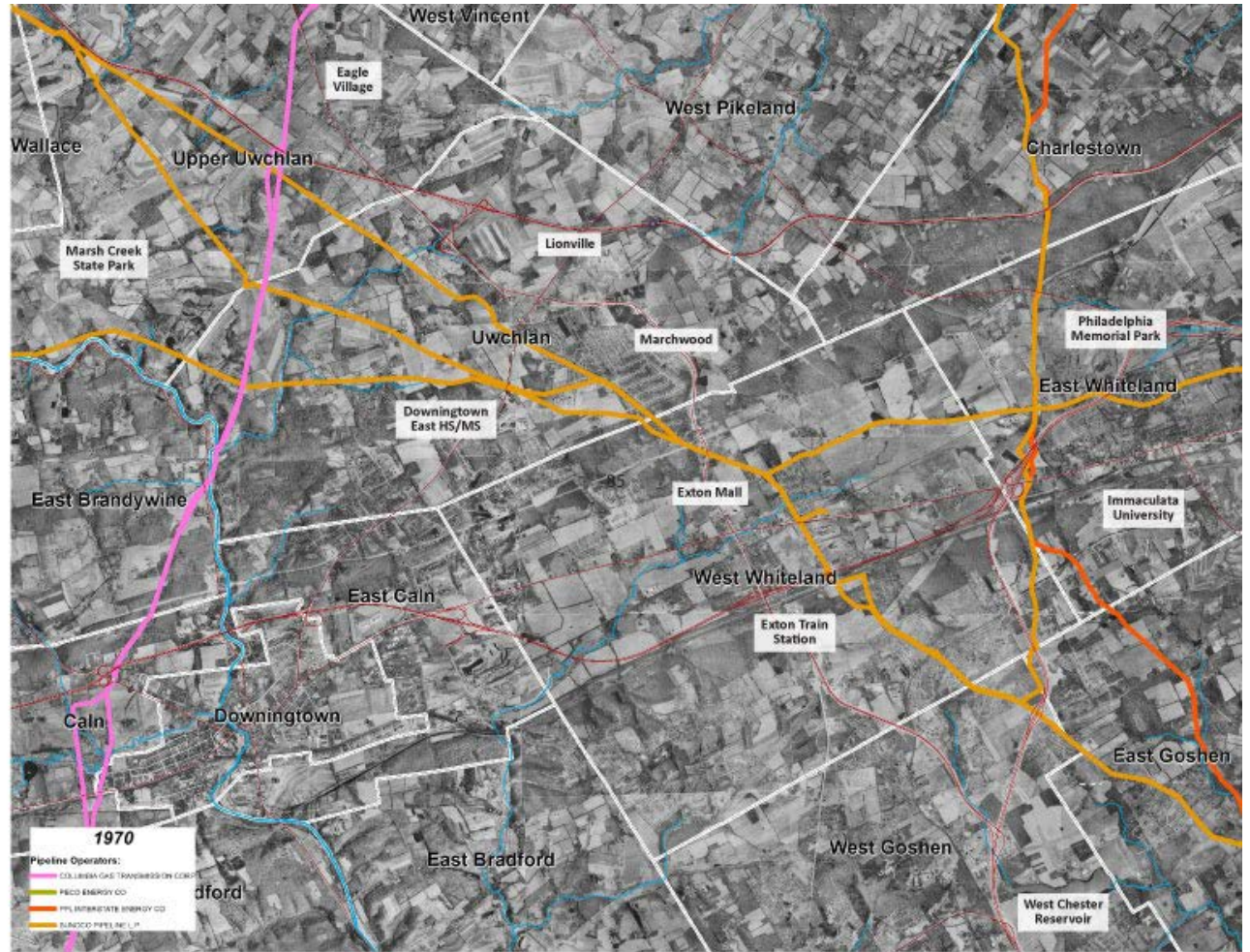
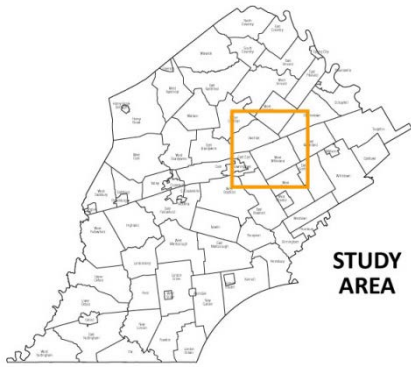


2010

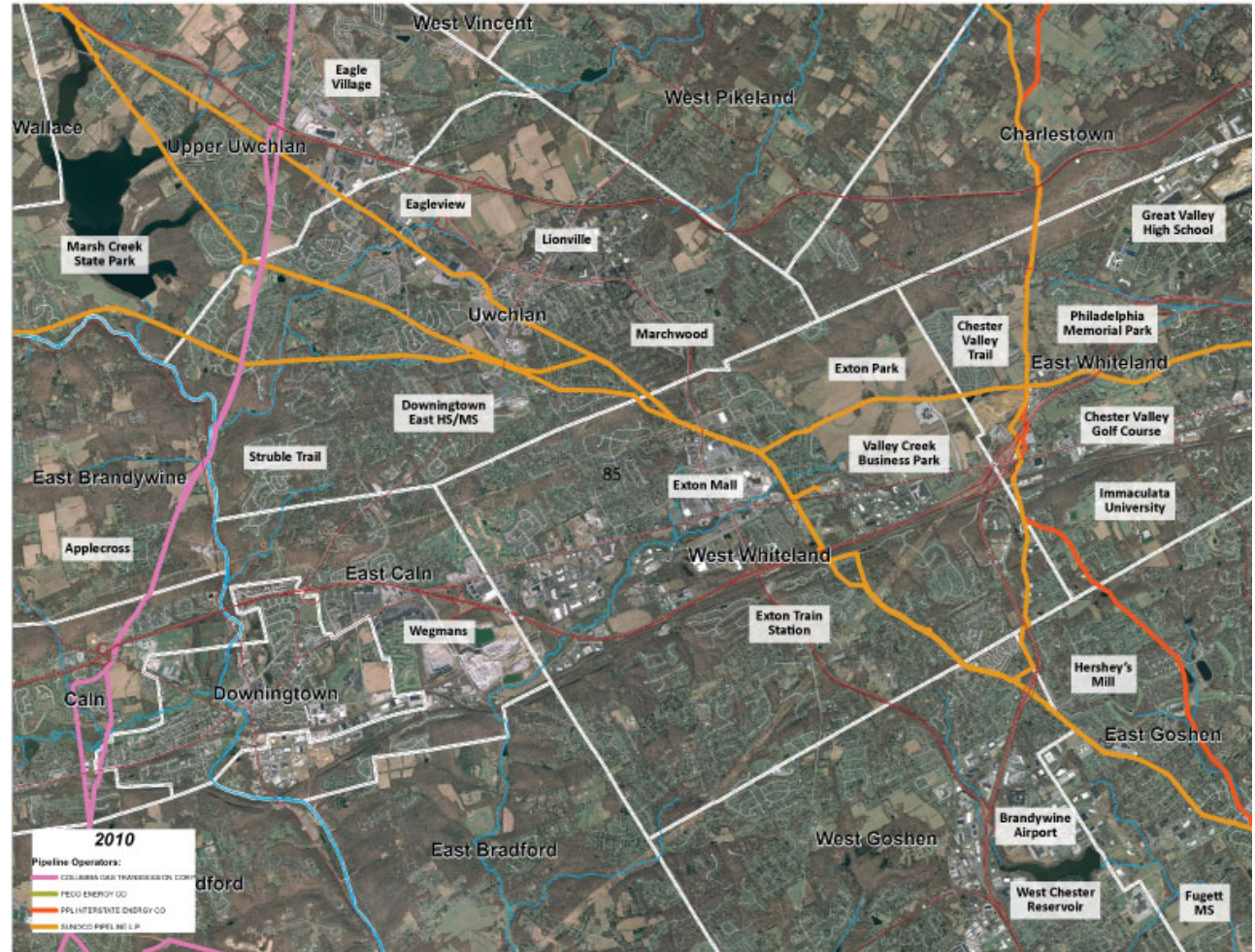
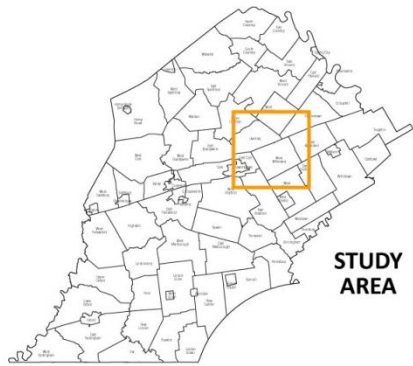
Exton Area - 1938



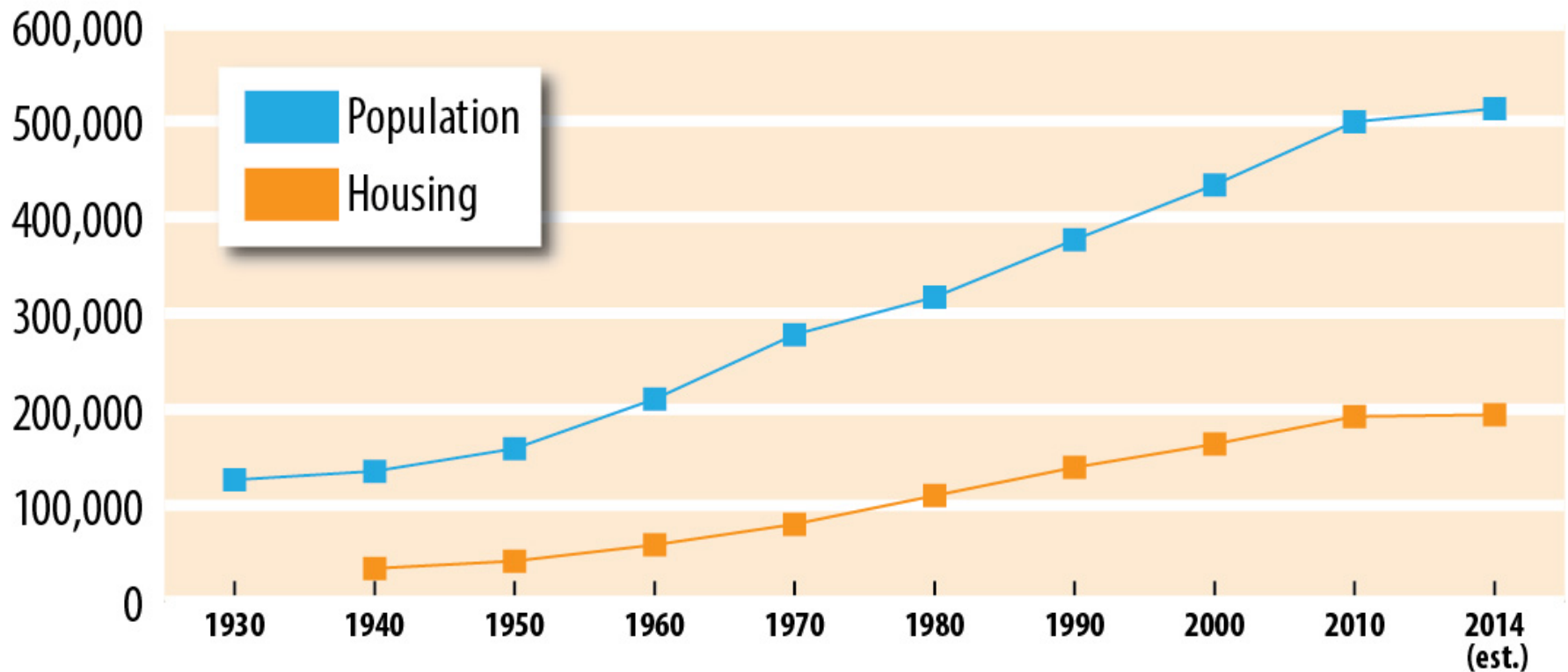
Exton Area - 1970



Exton Area - 2010

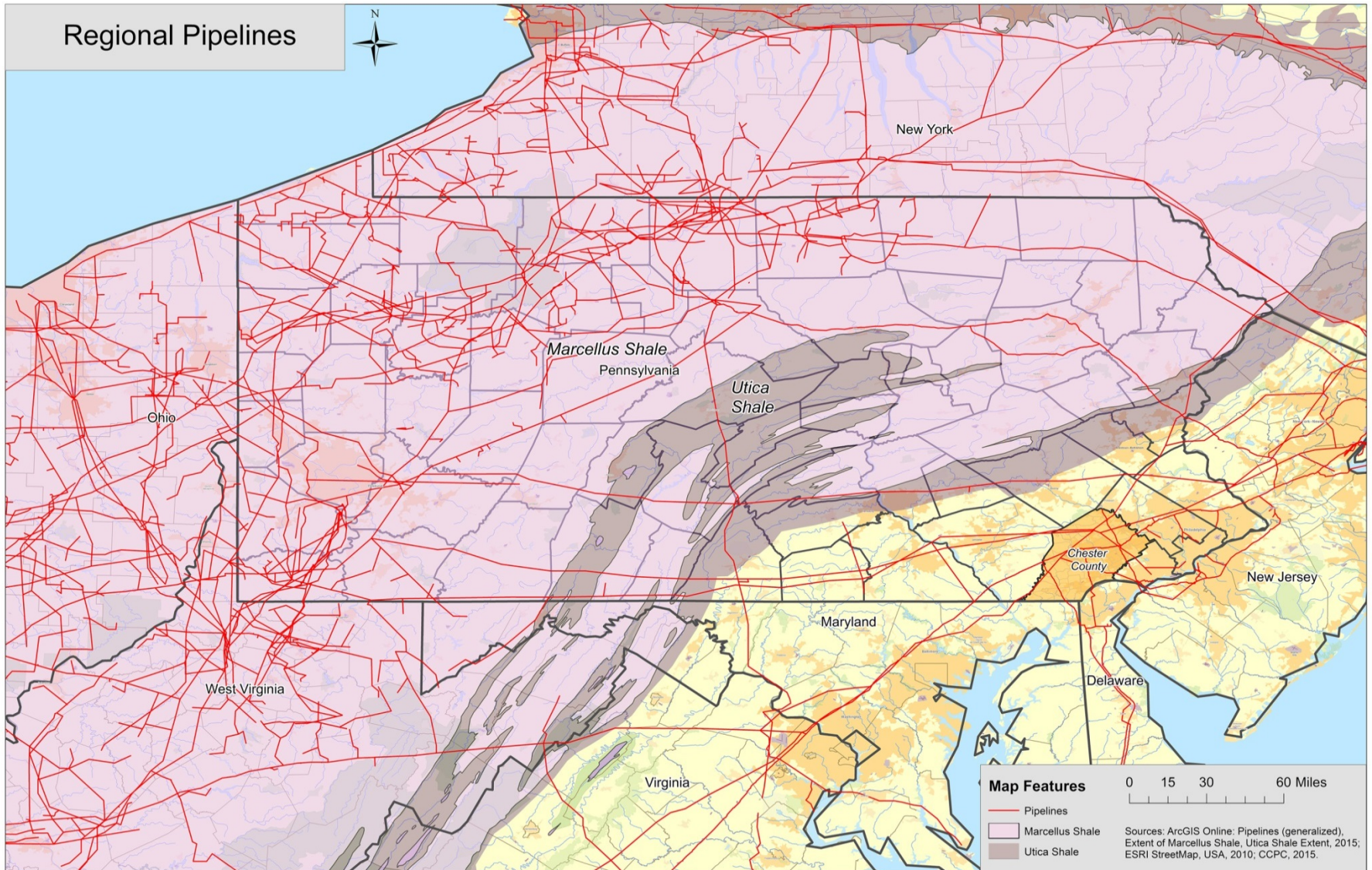


Chester County Population and Housing | 1930–2014



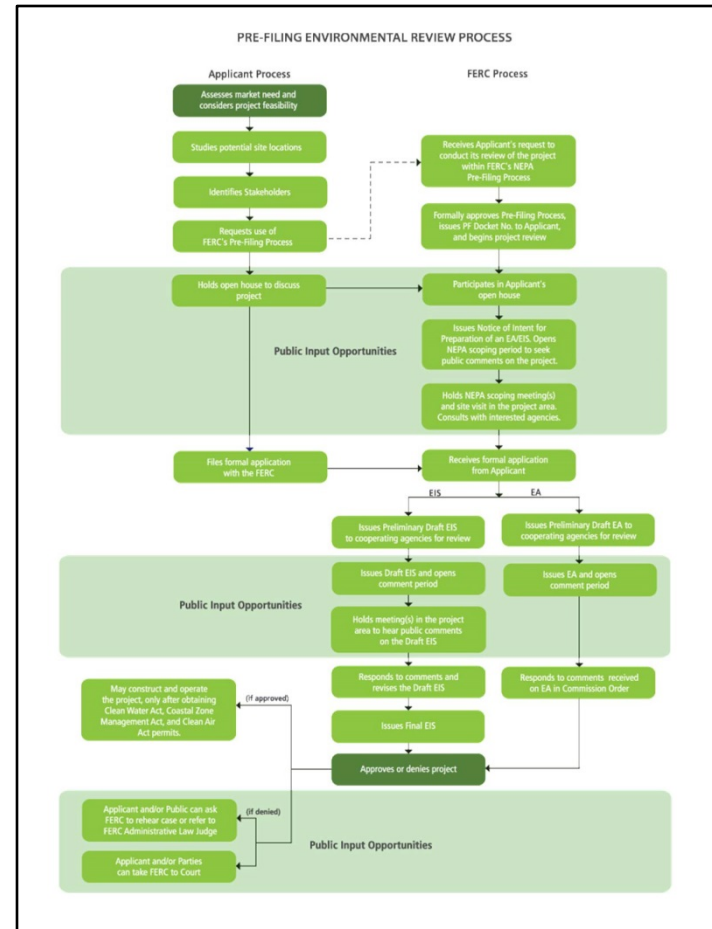
Source: U.S. Census, 1930-2014 (Rounded to the nearest 10)

Marcellus Shale & Chester County



Provide Input in the Pipeline Review Process

- Limited opportunities for **formal input** into the siting process
- Natural Gas Pipelines fall under FERC Review Process
- No formal input process for siting of Hazardous Liquid Pipelines



Information Source for Stakeholders

- Pipeline Operators
- Residents and Landowners
- Municipalities
- Elected Officials



Facilitate Communication between all Parties

- **Connecting stakeholders to the right person or agency**
- **Coordinate meetings**
- **Event announcements**
- **Links to FERC review process**



Address Pipeline Infrastructure in the County Comprehensive Plan

- Plan sets long-range policies for Chester County
- “Umbrella” policy guide for municipalities
- Infrastructure - Energy, Transmission, and Distribution



Why was the PIC created?



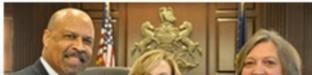
Google™ Custom Search

Search



[Home](#) [Comprehensive Plan](#) [Publications](#) [Planning Services](#) [Mapping and Data](#)

Chester County Pipeline Information Center



An initiative of the Chester County Board of Commissioners

The Board of County Commissioners welcomes you to the Chester County Pipeline Information Center (PIC).

The PIC was created to provide residents with a central location where they can find information on all aspects of pipeline issues including pipeline safety, the pipeline review process, and the latest information on pipeline project activity within Chester County and the surrounding region.

Upcoming Events and Website Overview

Sunoco Logistics Mariner East 2 Open House -
June 29 ,2015



Active Pipeline Projects

[Pipeline Projects Summary Table](#)

[Pipeline Notification Protocol](#)

[Maintenance Notifications](#)

[Pipelines in the News](#)

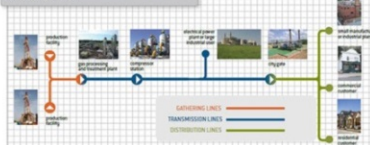
Pipeline Maps



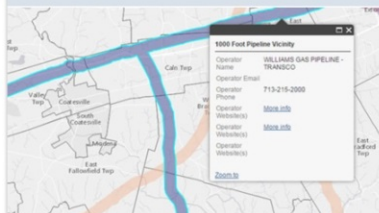
Glossary of Terms and Acronyms

THE NATURAL GAS DELIVERY NETWORK

From origins to consumption – five different types of pipelines and processing facilities deliver natural gas to homes and businesses.



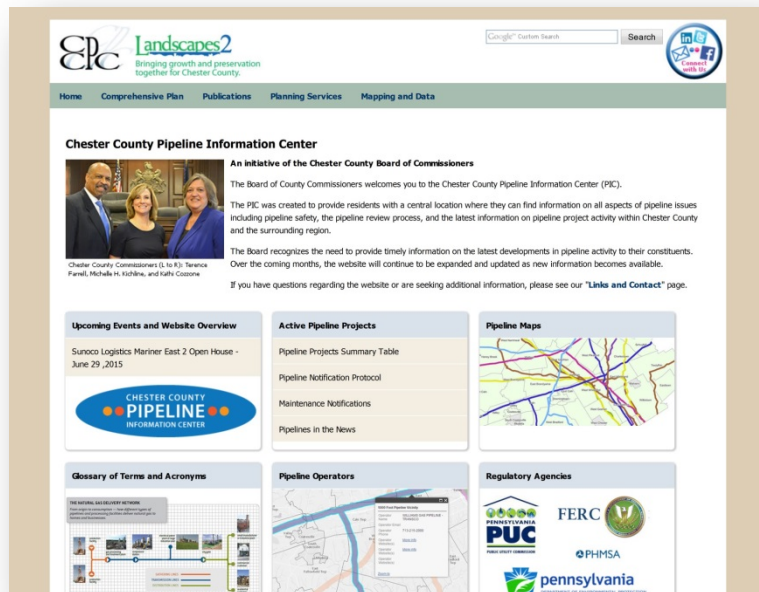
Pipeline Operators



Regulatory Agencies



Purpose of the Pipeline Information Center



- Supports the County's Role as the Pipeline Point of Contact
- One-stop location for pipeline project information
- A source of objective and current pipeline information
- A tool for municipalities, residents, and other stakeholders

Act 13, the Robinson Case, and the PUC

- **Robinson case challenged certain portions of Act 13, specifically:**
 - ▶ **Section 3303**, which excluded municipal regulation of oil and gas operations, and
 - ▶ **Section 3304**, which required uniformity of local ordinances including use and setback requirements for siting oil and gas operations in zoning districts, including the “reasonable development” clause which permitted oil & gas operations in all zoning districts within the guidelines set forth by the provisions
- PA Commonwealth Court found portions of the Act to be unconstitutional. Case appealed by state and goes to PA Supreme Court.

Act 13, the Robinson Case, and the PUC (cont.)

- December of 2013, Supreme Court decrees the state does not have absolute power over municipalities in terms of environmental protection and Act 13 puts municipalities in direct conflict with their constitutional authority to protect the environment under the “Environmental Rights Amendment”, Section 27 of the Pennsylvania Constitution.
- Supreme Court also agrees that Sections 3303 and 3304 of the Act are unconstitutional. State asks Court to reconsider opinion; Court recently denied request and the decision is now final.

Act 13, the Robinson Case, and the PUC (cont.)

- Supreme Court remanded certain arguments back to the Commonwealth Court for further consideration, e.g., the role of the PUC in reviewing local zoning ordinances. Commonwealth Court in July of 2014 ruled that challenges to local ordinances must come before municipal zoning boards per the requirements of the Municipalities Planning Code, not the PUC.
Sept. 28 2016 decision – upheld by Supreme Court
- “Certificate of Public Convenience” from PUC may exempt pipelines from local zoning laws, however, a recent July 23, 2014 decision by PUC Administrative Law Judges questions the efficacy and suitability of such an approach. **“Reasonably necessary for the convenience or welfare of the public”**

No ruling but: Supreme Court hinted that it might not consider public utilities to always have the power of eminent domain

Act 13, the Robinson Case, and the PUC (cont.)

- Other decisions from Sept. 28, 2016 Decision:
 - ▶ **“Doctor Gag Rule”** – Drillers must list chemicals used and share with health professionals; doctors no longer excluded from knowing when treating patients.
 - ▶ Use of Eminent Domain for storage facilities no longer permitted – provisions permitted in Act 13 are unconstitutional.
 - ▶ Exclusion of private wells from notification of spills struck down.

Municipalities Planning Code (MPC)

- Preamble and Sec. 105 –

To empower “municipalities” to plan their development and govern the same by **zoning, subdivision and land development** ordinances... **to protect and promote safety, health and morals**; to accomplish coordinated development; **to provide for the general welfare**; to **guide uses of land and structures, type and location of streets, public grounds and other facilities**; to promote the preservation of this Commonwealth’s natural and historic resource; **to ensure municipalities adopt zoning ordinances...consistent with the municipality’s comprehensive plan.**

Municipalities Planning Code (MPC)

- **Sec. 604(1) –**

To promote, protect and facilitate any or all of the following: the **public health, safety**, morals, and the general welfare; coordinated and practical community development and proper density of population; emergency management preparedness and operations, airports, and national defense facilities, the provisions of adequate light and air, access to incident solar energy, police protection, vehicle parking and loading space, transportation, water, sewerage, schools, recreational facilities, public grounds, the provision of a safe, reliable and adequate water supply for domestic, commercial, agricultural or industrial use, and other public requirements; as well as **preservation of the natural, scenic and historic values in the environment and preservation of forests, wetlands, aquifers and floodplains.**

Municipalities Planning Code (MPC)

- **Sec. 604(2)**

To prevent one or more of the following: overcrowding of **land, blight, danger and congestion in travel and transportation, loss of health, life or property from fire, flood, panic or other dangers.**

Municipalities Planning Code (MPC)

- **Sec. 605 - Where zoning districts are created, all provisions shall be uniform for each class of uses** or structures, within each district, except that additional classifications may be made within any district:
 - (1) For the purpose of making transitional provisions at and near the boundaries of districts.
 - (2) For the regulation, restriction or prohibition of uses and structures at, along or near:
 - ...(vii) **flood plain areas, agricultural areas, sanitary landfills, and other places having a special character or use affecting and affected by their surroundings.**

Municipalities want a say regarding the land use implications of pipelines

- Want to address the health, safety and welfare issues of siting transmission pipelines and be consistent with local land use planning regulations and comprehensive land use planning.

- **“How vs. Where”**

How – DEP (regulatory role under Act 13 – Chapter 78; new section just adopted (9/16) provides improved water protections, public resource protections and information sharing.

- **Want to provide for:**

- ▶ Uses not otherwise permitted;
- ▶ Securing sites against vandalism;
- ▶ Suitable access to pipeline sites;
- ▶ Landscape buffers and setbacks for new development;
- ▶ Signage;
- ▶ Etc.

The TAG Grant Approach

Post Act 13 Supreme Court Ruling

- **A multi-prong municipal regulatory approach that addresses:**
 - 1) Surface land uses affiliated with pipelines (providing for uses not otherwise permitted in most ordinances),
 - 2) Street opening standards,
 - 3) Standards for new development in proximity to pipelines, and
 - 4) Revisions to municipal comprehensive plans (providing the nexus between the comp. plan and code of ordinances).
- These four items combined to provide an effective approach towards proactively addressing pipelines within the legislative and regulatory climate in existence.
- Considered on solid ground from a planning and legal perspective (post-Act 13) – PHMSA circulated model ordinances statewide.

Surface Land Uses Affiliated with Pipelines

- Above-ground transmission pipeline facilities including, but not limited to, compressor stations, pumping stations, regulator stations, launcher/receiver stations, and other surface pipeline appurtenances.
- **Purposes**
 - ▶ Accommodate such uses consistent with desire to protect the health, safety and welfare of the citizens of the municipality;
 - ▶ Minimize aesthetic, nuisance and visual impacts through proper design, siting and screening;
 - ▶ Ensure the location of such uses complies with industry standards; and
 - ▶ Preserve community character adjacent to such uses.

Surface Land Uses Affiliated with Pipelines (cont.)

- **Locational Provisions**

- ▶ Industrial Districts, etc.
- ▶ Special Use Districts (areas where pipeline corridors already exist)
- ▶ Prohibitions (within historic preservation overlay districts, scenic corridor overlay districts, etc.)
- ▶ Conditional use?

Surface Land Uses Affiliated with Pipelines (cont.)

- **Standards**

- ▶ Setbacks from property line or right-of-way
- ▶ Screening and Buffering: landscape plan, fencing
- ▶ Noise reduction
- ▶ Odor reduction
- ▶ Signage: limit to appropriate warning and utility identification
- ▶ Parking
- ▶ Lighting
- ▶ Design: engineered plan and review function, compatibility with surrounding uses
- ▶ Visual Impact Reduction
- ▶ Sufficient Need
- ▶ Licensing Documentation
- ▶ Removal Requirements

Street Opening Standards

- Providing for the regulation of street openings, installations and driveways.

- **Purpose**

To provide applicable standards for the opening, cutting, excavating, grading, boring, crossing, installation or disturbance upon, in, under, or across a municipal road or road right of way.

- **Standards**

- ▶ Permit requirement
- ▶ Application and Fees
- ▶ PA One-Call
- ▶ Traffic Maintenance
- ▶ Detour provisions

Street Opening Standards (cont.)

- **Standards (cont.)**

- ▶ Erosion Control (possible references)
- ▶ OSHA requirements
- ▶ Work notification
- ▶ Backfill requirements
- ▶ Overnight site security and public safety
- ▶ Installation and Clean-up
- ▶ Temporary and permanent road restoration
- ▶ Identification of applicant and contact information
- ▶ Security deposit and work guarantee
- ▶ Utility placement and drainage
- ▶ Violations and penalties
- ▶ Insurance
- ▶ Driveway Standards (optional): permits, dimensions, locations, etc.

Standards for New Development in Proximity to Pipelines

- Plan submission, buffer, setback, signage and landscaping provisions for new development adjacent to transmission pipelines.
- **Purposes**
 - ▶ Help prevent and minimize unnecessary risk to the public health and welfare due to transmission pipelines and ensure consistency with the intent of the Municipal Comprehensive Plan;
 - ▶ Minimize the likelihood of accidental damage to transmission pipelines due to external forces, such as construction activity and equipment;
 - ▶ Avoid exposing land uses with high on-site populations that are difficult to evacuate; and
 - ▶ Help reduce adverse impacts in the event of a pipeline failure.

Standards for New Development in Proximity to Pipelines (cont.)

- **Applicability and Standards**

- ▶ Plan content for preliminary and final plan submissions
 - Document the location, r-o-w and limits of all easements for transmission pipelines.
- ▶ Setbacks for new uses, including “Potential Impact Radius” (PIR) Protection of pipeline r-o-w - temporary barricades and signage.
- ▶ Consultation Zone – applies to any application for new uses within proximity of pipeline r-o-w. Requires applicant to communicate plan details to pipeline operator and provide sufficient access to pipeline.
- ▶ Land uses with high on-site populations – Such uses within 660 feet of pipelines shall develop mitigation measures (emergency procedures, employee training and education).

Standards for New Development in Proximity to Pipelines (cont.)

- **Applicability and Standards (cont.)**

- ▶ Design, buffering and screening – incorporating linear appearance of pipeline into development design; landscaping to minimize and buffer pipeline.
- ▶ Signage – need for, number of and placement of identification and/or warning signs

What we are trying to avoid!

Washington State

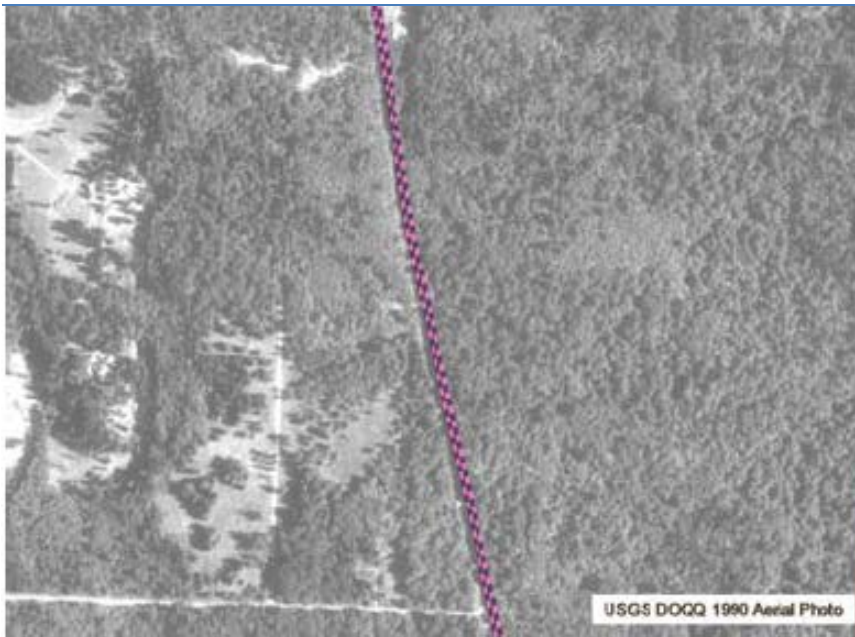


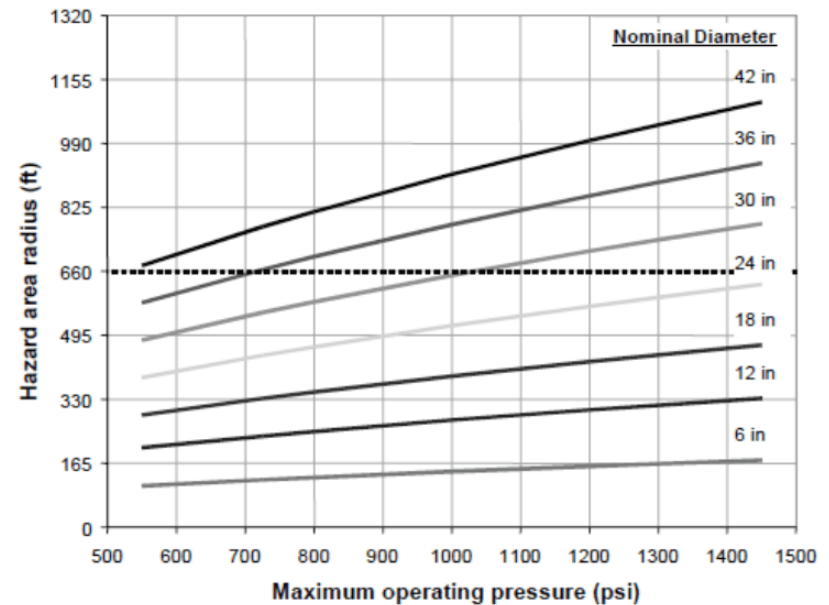
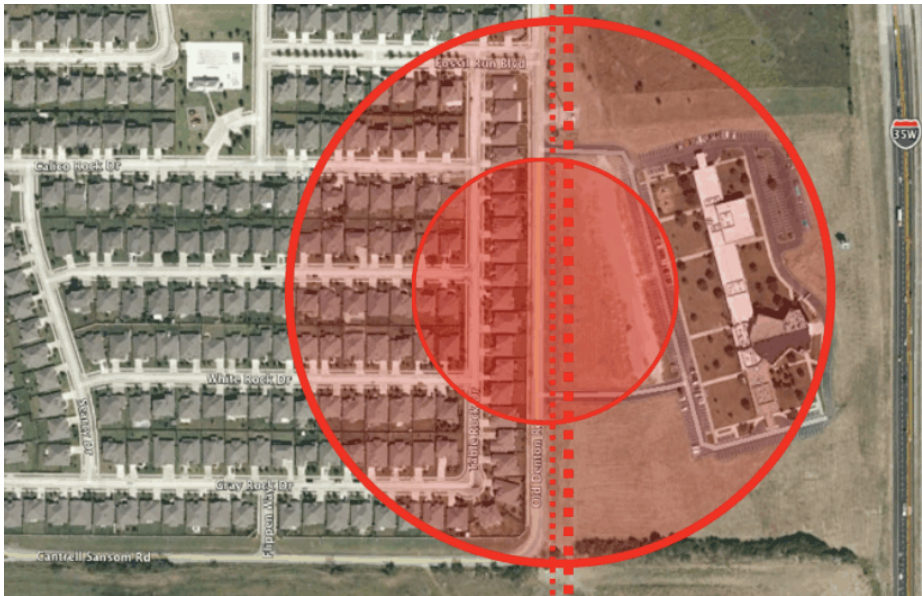
Figure 1 - 1990



Figure 2 - 2002

Technique available to use – “Potential Impact Radius”

- Potential impact radius determined by knowing diameter of line and pressure of gas.



Municipal Comprehensive Plans

- Provides the rational nexus between the comprehensive plan and municipal ordinances (Sect 105 of the MPC)
- Revisions to chapters/sections addressing community facilities and services.
 - ▶ Acknowledge existing and proposed pipelines
 - ▶ Acknowledge benefits and risks
 - ▶ The need to monitor existing and proposed activity
 - ▶ The need to enact regulations complimentary to state and federal law
 - *Examples: access provisions, buffer and setback standards, etc.*
 - ▶ Seek out increased communication with pipeline operators
 - *Issues: new development impacts, land uses with high on-site populations, etc.*
 - ▶ Reference related county and statewide planning goals
 - ▶ Coordinate with county and state on new pipeline projects

Carol Stauffer, AICP

Chester County

Planning Commission

www.chesco.org/planning/pipelines

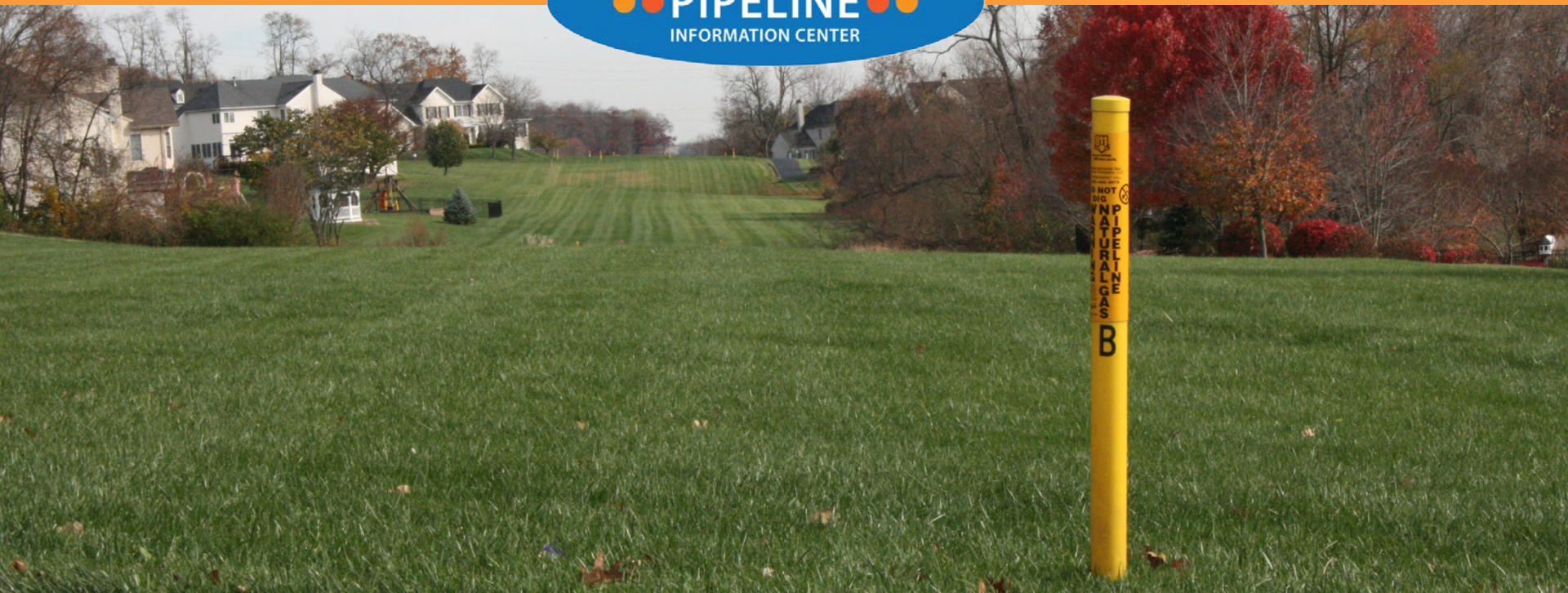
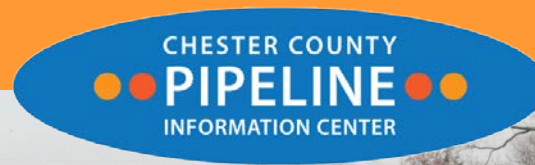
ccpipelines@chesco.org

John M. Gaadt, AICP

Gaadt Perspectives, LLC

www.gaadtperspectives.com

jgaadt@gaadt.com



Pipeline Project Summary Table



Google™ Custom Search Search



Home Comprehensive Plan Publications Planning Services Mapping and Data

Pipeline Information Center

Upcoming Events and Website Overview

Active Pipeline Projects

Pipeline Notification Protocol

Pipeline Maps

Pipelines in the News

Landowners Resources

Pipeline Safety

Glossary

Pipeline Operators

Regulatory Agencies

Links and Contact Info

Resources

Chester County Pipeline Information Center: Project Summary

An initiative of the Chester County Board of Commissioners



Pipeline Operator	Project Name	Project Description	Product Type	Interstate or Intrastate?	Location
Chester County Projects					
Columbia Pipeline Group	East Side Expansion	Installation of new natural gas pipelines with approximately 9.5 miles in Chester County and 9.5 miles in Gloucester County, NJ. Modifications and upgrades to facilities are also proposed in Northampton, Pike, Bucks and Montgomery Counties in PA, as well as Orange County, New York, and Harford County, Maryland. More Information	Natural Gas	Interstate (FERC)	
Sunoco Logistics	Mariner East 1	Mariner East 1 is a project to build and connect an approximately 50-mile pipeline with existing lines to move ethane and propane from operations in Western Pennsylvania to the Marcus Hook facility along the Delaware River. More Information	Natural Gas Liquids: Ethane, Propane	Intrastate	
Sunoco Logistics	Mariner East 2	The Mariner East 2 project will expand the existing Mariner East service to deliver natural gas liquids from the Marcellus and Utica Shale regions for distribution to both domestic and international markets via a new 16-inch or larger pipeline. More Information	Natural Gas Liquids: Ethane, Propane	Interstate	
Eastern Shore Natural Gas	White Oak Mainline Expansion	This project is comprised of approximately 7.2 miles of 16 inch diameter pipeline looping and appurtenant facilities in Chester County and 3,550 horsepower of additional compression at the existing Delaware City Compressors Station in New Castle County, DE. The proposed route will use a combination of existing right-of-way and, in some areas, the purchase of easements for facilities or temporary work spaces for construction activities will be needed. More Information	Natural Gas	Interstate (FERC)	

Sample Project Page



Google™ Custom Search

Search



[Home](#) [Comprehensive Plan](#) [Publications](#) [Planning Services](#) [Mapping and Data](#)

Pipeline Information Center

Upcoming Events and Website Overview

Active Pipeline Projects

Pipeline Notification Protocol

Pipeline Maps

Pipelines in the News

Landowners Resources

Pipeline Safety

Glossary

Pipeline Operators

Regulatory Agencies

Links and Contact Info

Resources

Chester County Pipeline Information Center: Columbia East Side Expansion



An initiative of the Chester County Board of Commissioners

Columbia Pipeline Group's East Side Expansion project, in response to customer demand for additional capacity, is planning to upgrade and expand existing pipeline and compressor station facilities. The project involves the installation of new natural gas pipelines with approximately 9.5 miles in Chester County and 9.5 miles in Gloucester County, New Jersey. The project also includes modifications and upgrades to facilities in Northampton, Pike, Bucks and Montgomery Counties in PA, as well as Orange County, New York, and Harford County, Maryland. The proposed project is anticipated to be in service in fall of 2015.

On June 17, 2014, FERC issued a Notice of Schedule for Environmental Review of the East Side Expansion Project, FERC docket Number CP14-17. The schedule for the Environmental Review is as follows: Issuance of the Environmental Assessment, August 29, 2014 and the 90-day Federal Authorization Decision Deadline is scheduled for November 27, 2014. To view filings with FERC on this project, please visit http://elibrary.ferc.gov/idmws/docket_search.asp, enter "CP14-17" in the Docket Number box and then click "Submit" in the lower left hand corner.



According to the **East Side Expansion Project website**, in response to landowner concerns, Columbia submitted a revised pipeline route to the Federal Energy Regulatory Commission (FERC). **View a map of the re-routed Pennsylvania Segment.**

On August 29, 2014, the Federal Energy Regulatory Commission (FERC) issued the Environmental Assessment (EA) and Environmental Impact Statement (EIS) for comment. The FERC Docket Number is CP14-17-000. To view these documents, **click here**. To see all FERC postings on this project **click here** and enter Docket Number CP14-17 into the Search box.

On September 29, 2014, the Chester County Planning Commission (CCPC) and the Chester County Water Resources Authority (CCWRA) presented comments on the Draft Environmental Assessment for the Columbia Gas Transmission, LLC East Side Expansion Project. View the **CCPC letter** and the **CCWRA letter**.

In an Order, dated December 18, 2014, FERC has issued a certificate of public convenience and necessity, authorizing Columbia to

Upcoming Events...

EPC Landscapes2
Bringing growth and preservation together for Chester County.

Home Comprehensive Plan Publications Planning Services Mapping and Data

Pipeline Information Center

Upcoming Events and Website Overview

Chester County Pipeline Information Center: Upcoming Events and Website Overview

An initiative of the Chester County Board of Commissioners

Upcoming Events

CHESTER COUNTY PIPELINE INFORMATION CENTER

Sunoco Logistics Opens Mariner 2 East Right-of-Way Office

Sunoco Logistics has announced that there is a newly opened **Right of Way office** for the Mariner East line. The office provides a location for landowners to meet with a Right of Way agent or supervisor to discuss questions or concerns regarding easement negotiations. The office is open by appointment only at the following times: Wednesday 7:30 a.m. - 1 p.m.; Thursday 11 a.m. - 6 a.m.; and Saturday 10 a.m. - 2 p.m. If you would like to schedule a meeting you can call 484-359-7241 or email sunocoextonoffice@sunocologistics.com. The office is located in Eagleview Corporate Center at 600 Eagleview Boulevard, Suite 300, Exton PA 19341.

next decade.

DEP Pipeline Infrastructure Task Force Final Meeting on January 20, 2016

The **DEP Pipeline Infrastructure Task Force** final meeting will be held on January 20, 2016. The meeting will focus on determining which of the 184 recommendations in the **draft Task Force Report** are most important. The extra week will also give Task Force members additional time to review public comments received by DEP. The meeting on January 20 will be held at DEP's Southcentral Regional Office at 909 Elmerton Ave. in Harrisburg starting at 1:00. Webcast instructions will be posted on the Task Force meeting page.

Website Overview

There are nearly 600 linear miles of existing pipeline corridors that cross through the landscape of Chester County's 760 square miles. The goal of this Pipeline Information Center webpage (the PIC) is to provide information to residents, pipeline operators and other Chester County stakeholders, including farmers and non-profit land trusts and conservancies with large preserves, that are commonly crossed by pipelines. The structure of the PIC has been designed to address stakeholders' concerns.

Pipelines in Chester County
Landscapes2

Pipelines in the News

The image shows a screenshot of a news article from 'Daily Local News'. The page features a navigation bar with categories like News, Sports, Business, Entertainment, Lifestyle, Obituaries, Opinion, and Blogs. A red alert banner at the top reads 'Alert: Blizzard Watch issued for Philadelphia region, New Jersey'. The article title is 'Pipeline infrastructure task force meeting scheduled in Harrisburg' by Ginger Dunbar. The article text discusses a meeting by the Pennsylvania Department of Environmental Protection (DEP) to review suggestions for a draft report on pipeline infrastructure. A sidebar on the left contains various links related to pipeline information, events, and resources.

DAILY LOCAL NEWS NEWS

News ▾ Sports ▾ Business Entertainment ▾ Lifestyle ▾ Obituaries Opinion ▾ Blogs ▾

Alert: Blizzard Watch issued for Philadelphia region, New Jersey

Home **News**

Pipeline infrastructure task force meeting scheduled in Harrisburg

By **Ginger Dunbar**, *Daily Local News*

POSTED: 12/08/15, 3:39 PM EST | UPDATED: ON 12/08/2015 1 COMMENT

HARRISBURG >> An additional Pipeline Infrastructure Task Force meeting will be held next week to continue working on a report with comments from the public.

The Pennsylvania Department of Environmental Protection (DEP) announced that this additional meeting is designated for the Pipeline Infrastructure Task Force to continue the review of suggestions for the draft report.

The meeting will be held from 1 to 4 p.m. on Dec. 16, at the DEP South Central Regional Office at 909 Elmerton Avenue, Harrisburg.

A public comment period on the draft report is being extended until Dec. 29. Public comments are being accepted through “eComment.” The final report by the task force, including its activities, is due by February 2016.

The task force mission states that the stakeholder-driven effort was tasked with developing policies, guidelines and tools to assist in pipeline development, including planning, permitting and construction, as well as long-term operation and maintenance.

“In the next decade, Pennsylvania will undergo a substantial pipeline infrastructure build-out to transport gas and related by-products from thousands of wells throughout the state,” the draft report states. “The unprecedented build-out creates an opportunity for the Commonwealth to engage stakeholders in a collaborative process to achieve a world-class pipeline infrastructure system.”

EPIC

Home **Complete**

Pipeline Information Center

Upcoming Events and Website Overview

Active Pipeline Projects

Pipeline Notification Protocol

Pipeline Maps

Pipelines in the News

Landowners Resources

Pipeline Safety

Glossary

Pipeline Operators

Regulatory Agencies

Links and Contact Info

Search

Pipeline Mapping



Pipeline Information Center

[Upcoming Events and Website Overview](#)

[Active Pipeline Projects](#)

[Pipeline Notification Protocol](#)

[Pipeline Maps](#)

[Pipelines in the News](#)

[Landowners Resources](#)

[Pipeline Safety](#)

[Glossary](#)

[Pipeline Operators](#)

[Regulatory Agencies](#)

[Links and Contact Info](#)

[Resources](#)

Chester County Pipeline Information Center: Mapping

An initiative of the Chester County Board of Commissioners



Interactive PIC Mapping Application



The interactive map of existing pipelines in Chester County can be viewed here.

Chester County Pipelines by Operator



A map showing pipelines and their operators can be viewed here.

Regional Pipeline Network and Marcellus Shale Map



A map showing Chester County in the context of the regional pipeline network and the Marcellus Shale Formation.

Pipelines and Natural and Historic Resources



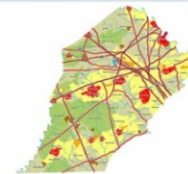
This series of three maps shows existing pipelines and their vicinity to woodlands, wetlands, floodplains, high quality and exceptional value watersheds, impaired streams,

Pipelines and Community Facilities



A map showing pipelines and nearby community facilities can be viewed here.

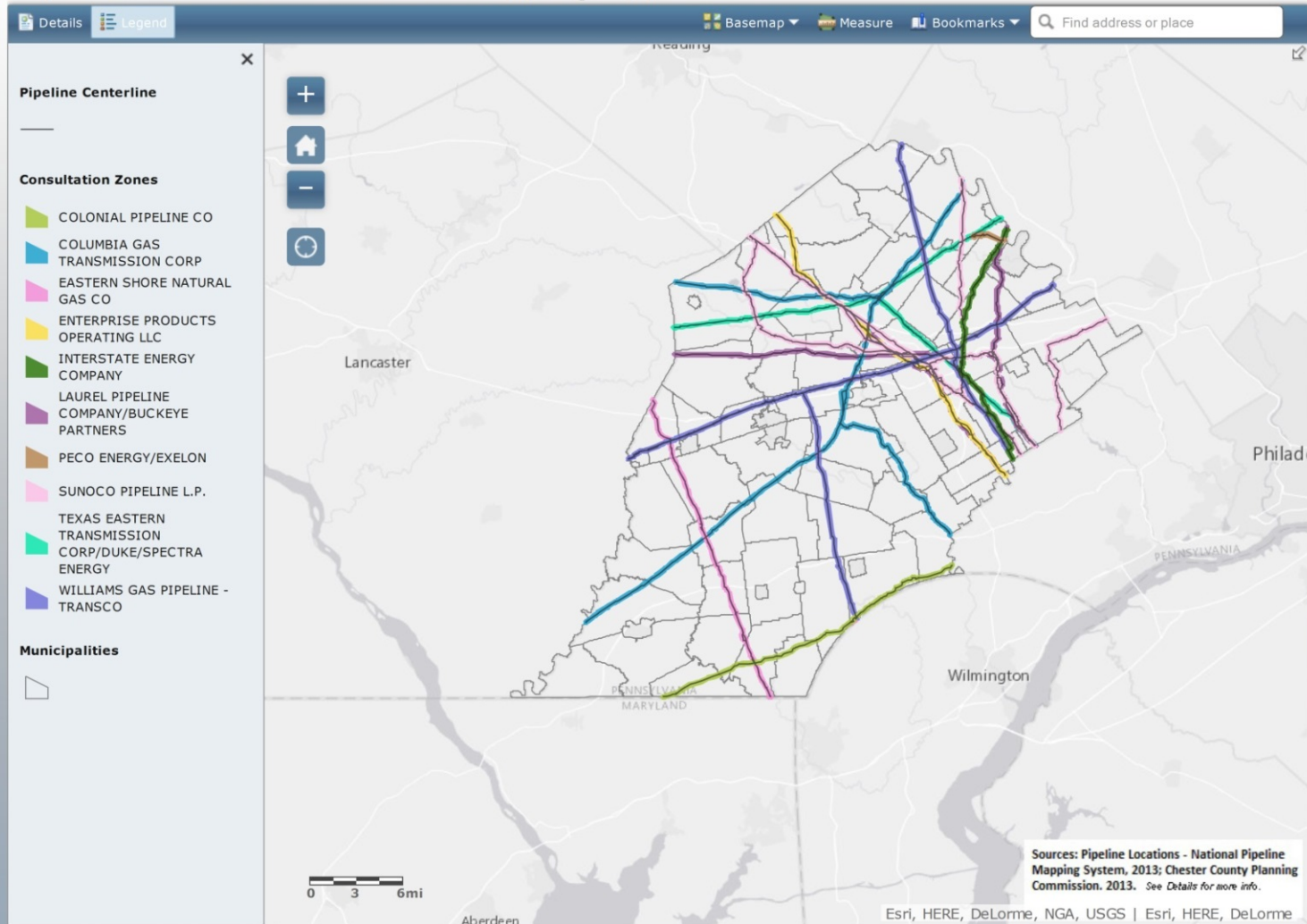
Pipelines and Landscapes2



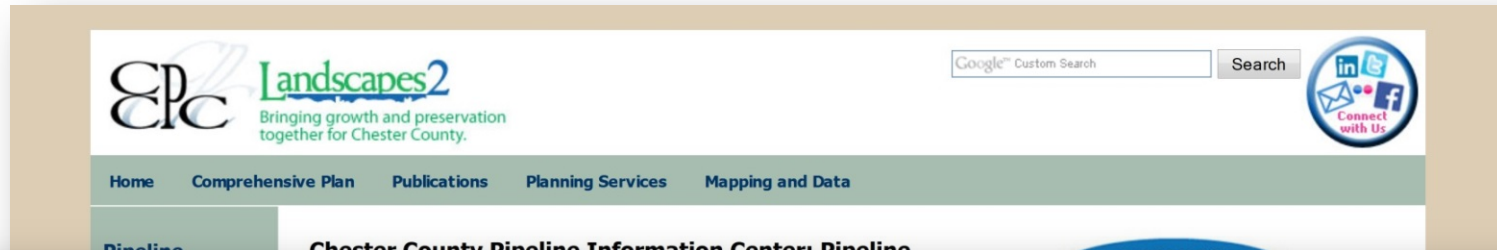
A map showing pipelines along with Landscapes, from the County's adopted comprehensive plan (Landscapes2), can be found here.

Interactive Mapping Application

Pipeline Information Center Mapping Application



Pipeline Notification Protocol



What is the PNP and who maintains it?

The Pipeline Information Center (PIC) website serves as a central location for posting pipeline project information and updates on proposed and active pipeline projects. The PIC supports pipeline safety and public awareness through a partnership with pipeline providers, regulators, and municipal governments.

To further promote communication between all parties, Chester County has implemented a "Pipeline Notification Protocol" or "PNP" to inform residents and other constituents about pipeline projects in the County. The Chester County Planning Commission has been designated as the "point of contact" and is responsible for implementing the PNP.

Glossary

Pipeline Operators

Regulatory Agencies

Links and Contact Info

Resources

- Municipalities
- Conservation and Environmental Partners

Providing information through the PNP will allow us to update county departments, municipalities, and residents on pipeline activities in a consistent and timely manner.

How should information be provided to the PNP?

We request that the Chester County Planning Commission (CCPC) be included on any correspondence or other updates on current pipeline activity or maintenance projects in Chester County so that we can maintain the most up-to-date information on the Pipeline Information Center website.

This information can be provided through email or mail to:

Email:



Landowners Resources

Pipeline Information Center

Upcoming Events and Website Overview

Active Pipeline Projects

Pipeline Notification Protocol

Chester County Pipeline Information Center: Landowners Resources

An initiative of the Chester County Board of Commissioners



The following information is intended to serve as a resource for landowners and residents, including those who may have an existing or proposed pipeline right-of-way on or near their property. Please note that landowners should not rely solely on this information to direct their land or financial decisions. This information is not intended to be, and should not be considered to be, a substitute for legal advice and planning. Any individual who undertakes suggestions presented hereafter, should do so only after consulting with an experienced professional advisor.

Below you will find information on the following:

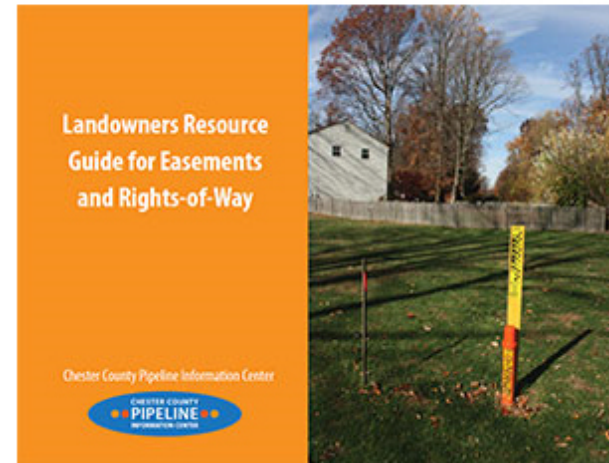
- [Landowners Resource Guide for Pipeline Easements and Rights-of-Way](#)
- [Finding Pipeline Locations and Operators](#)
- [Finding Pipeline Easements through the Recorder of Deeds](#)

Landowners Resource Guide for Pipeline Easements and Rights-of-Way

The resource guide provided here is intended to serve as a resource for landowners and residents, including those who may have an existing or proposed pipeline right-of-way on or near their property. Links and resources on easements are included for those interested in more detailed information on the subject.

Please note that landowners should not rely solely on this information to direct their land or financial decisions. This information is advisory and not intended to be, and should not be considered to be, a substitute for legal advice and planning. Any individual who undertakes specific suggestions presented in the resource guide should do so only after consulting with an experienced professional advisor.

[View the Landowners Resource Guide for Pipeline Easements and Rights-of-Way](#)



information on the pipeline operators, if any, in that specific area.

View the interactive pipeline map [here](#).

View pipeline operators [here](#).

- SUNOCO PIPELINE L.P.
- TE PRODUCTS PIPELINE COMPANY LP/ENTERPRISE PRODUCTS PARTNERS LP
- TEXAS EASTERN TRANSMISSION CORP/OUR SPECTRA ENERGY
- WILLIAMS GAS PIPELINE - TRANSCO

Municipalities



Pipeline Safety



Google™ Custom Search

Search



Locating Pipelines

Pennsylvania 811 & the 811 Hotline

811 is the national number designated to protect landscapers/contractors from unintentionally hitting underground utility lines while working on digging projects. 811 helps access locator services in order to mark the approximate location of underground lines, pipes and cables, in order to dig safely. The purpose of Pennsylvania 811/Call Before You Dig is to prevent damage to underground facilities and infrastructure of all types, through providing efficient and effective communications network between project owners, designers, excavators, and facility owners. **The site** houses a resource center, FAQ section, and tabs specific to the user searching the site, including homeowners, project owners, excavators, emergency responders, facilitate owners, and others.

We Support



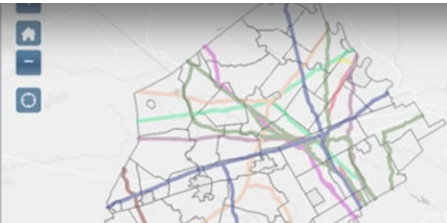
Pennsylvania 811

Regulatory Agencies

Links and Contact Info

Resources

- COLONIAL PIPELINE CO
- COLUMBIA GAS TRANSMISSION CORP
- EASTERN SHORE NATURAL GAS CO
- LAUREL PIPELINE COMPANY/BUCKEYE PARTNERS
- PECO ENERGY/EXELON
- PPL INTERSTATE ENERGY CO
- SUNOCO PIPELINE L.P.
- TE PRODUCTS PIPELINE COMPANY LP/ENTERPRISE PRODUCTS PARTNERS LP
- TEXAS EASTERN TRANSMISSION



Pipeline Operators



Google™ Custom Search

Search



[Home](#) [Comprehensive Plan](#) [Publications](#) [Planning Services](#) [Mapping and Data](#)

Pipeline Information Center

[Upcoming Events and Website Overview](#)

[Active Pipeline Projects](#)

[Pipeline Notification Protocol](#)

[Pipeline Maps](#)

[Pipelines in the News](#)

[Landowners Resources](#)

[Pipeline Safety](#)

[Glossary](#)

[Pipeline Operators](#)

[Regulatory Agencies](#)

[Links and Contact Info](#)

Chester County Pipeline Information Center: Operators

An initiative of the Chester County Board of Commissioners



Each operator's contact information is available through the **interactive map**. If you click on any pipeline on the map, a box will appear that will provide the following information:

- Name of the Operator/Company
- Name of the Department/Division to contact with NON-EMERGENCY questions
- Phone or email contact for residents
- Website link, if available, to the Chester County geographic area

Operator information is also available below. These links were either obtained directly from the operators, or in some cases, from the operator's website.

Operator links

- **Colonial Pipeline Company**
PO Box 350
Kemblesville, PA 19347
(610) 255-4556
- **Columbia Gas Transmission Corporation**
Brendan Neal, Manager, Community Relations & Stakeholder Outreach
Columbia Pipeline Group/NiSource, Inc.
10 G Street NE, Suite 400
Washington DC, 20002
Office: 202-216-9776
- **Eastern Shore Natural Gas Company**
1110 Forrest Ave
Dover, DE 19904
(302) 734-6720



Photo credit: Pipeline Safety Coalition

Regulatory Agencies



Google Custom Search

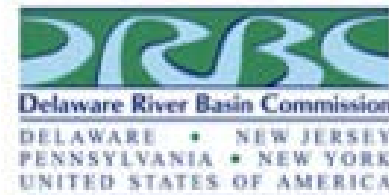
Search



Home Comprehensive Plan Publications Planning Services Mapping and Data



FERC



pennsylvania

DEPARTMENT OF ENVIRONMENTAL PROTECTION

In addition to PUC oversight, the Pennsylvania Department of Environmental Protection has regulatory authority over any crossing of a wetland or waterway by a pipeline.

Links and Contact Information



Google™ Custom Search Search



[Home](#) [Comprehensive Plan](#) [Publications](#) [Planning Services](#) [Mapping and Data](#)

Pipeline Information Center

[Upcoming Events and Website Overview](#)

[Active Pipeline Projects](#)

[Pipeline Notification Protocol](#)

[Pipeline Maps](#)

[Pipelines in the News](#)

[Landowners Resources](#)

[Pipeline Safety](#)

[Glossary](#)

[Pipeline Operators](#)

[Regulatory Agencies](#)

[Links and Contact Info](#)

Chester County Pipeline Information Center: Links and Contact Information



An initiative of the Chester County Board of Commissioners

Chester County Pipeline Information Center

Carol J. Stauffer, AICP
Chester County Planning Commission
610-344-6285
ccpipelines@chesco.org

Chester County Pipeline Information Center: www.chesco.org/planning/pipelines

Pipeline Notification Protocol (PNP)

Chester County has implemented a "Pipeline Notification Protocol" or "PNP" to inform residents and other constituents about pipeline projects in the County. Providing information through the PNP will allow us to update municipalities, residents, and other agencies on pipeline activities in a consistent and timely manner.

Coordination with all involved parties, including **pipeline operators, federal and state agencies, county departments, and municipalities**, is key to the successful implementation of the protocol.

To ensure the most current information is included on the PNP, we request that the CCPC point-of-contact be included on any correspondence or other updates on current pipeline activity or maintenance projects in Chester County so that we can maintain the most up-to-date information on the Pipeline Information Center website.

Information or updates to the PNP can be provided through email or mail to:

Email: ccpipelines@chesco.org

-or-

Mail: **Carol J. Stauffer, AICP**
Chester County Pipeline Point of Contact
Chester County Planning Commission
601 Westtown Road, Suite 270
PO Box 2747
West Chester, PA 19380

Pipeline O&A

Pipeline Resources

EPIC Landscapes²
Bringing growth and preservation together for Chester County.

Google™ Custom Search Search

Home Comprehensive Plan Publications Planning Services Mapping and Data

Pipeline Information Center

Upcoming Events and Website Overview

Active Pipeline Projects

Pipeline Notification Protocol

Pipeline Maps

Chester County Pipeline Information Center: Resources

An initiative of the Chester County Board of Commissioners

How to Link Your Website to the Pipeline Information Center

For our planning partners who would like to provide a link from their website directly to the Pipeline Information Center, please [click here](#) for logos and link instructions.

Finding Pipeline Easements

To get detailed information about a specific parcel, you should contact the **Chester County Recorder of Deeds** and provide them with the parcel number of the property you wish to learn more about. The Recorder of Deeds can also help you locate a deed and determine if a pipeline company holds an easement on it.

How to Link Your Website to the Pipeline Information Center



For our planning partners who would like to provide a link from their website directly to the Pipeline Information Center, please [click here](#) for logos and link instructions.

Links and Contact Info

Resources

on improving public, personal, and environmental safety in pipeline issues. PSC provides equal access to information, community mentoring and facilitating respectful and productive communication between all parties involved in pipeline issues. The PSC provides information for landowners and communities, and also provides resources, information on pipeline basics, and pipeline safety education. [Click here](#) for more information.

First Responder Emergency Response Guidebook