

The Road to



Somewhere

Reconnecting Urban and Suburban Communities

Natasha Manbeck, AICP, PE, *McMahon Associates, Inc.*

Douglas Robbins, AICP, PP, *URS Corporation*

Christopher Williams, PE, *McMahon Associates, Inc.*

PA Chapter of APA
2013 Annual Conference
Session A4
October 20, 2013

Contact Information

Natasha Manbeck, AICP, PE, McMahon Associates, Inc.

nmanbeck@mcmahonassociates.com

Douglas Robbins, AICP, PP, URS Corporation

douglas.robbins@urs.com

Christopher Williams, PE, McMahon Associates, Inc.

cwilliams@mcmahonassociates.com

Connectivity Challenges



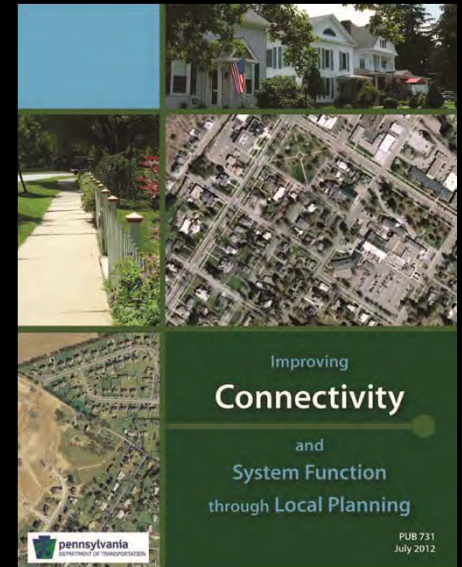
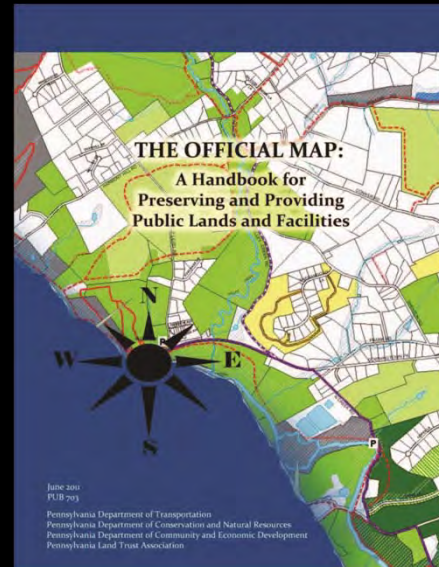
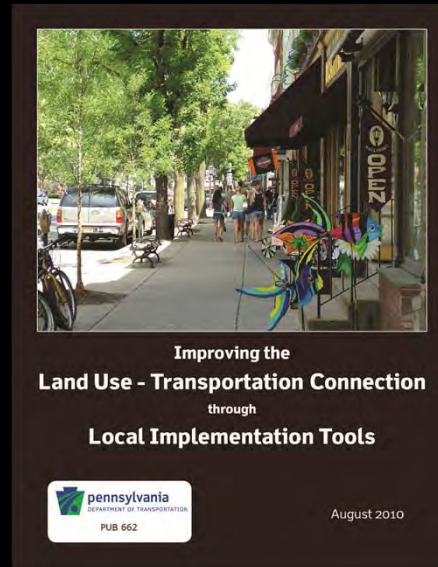
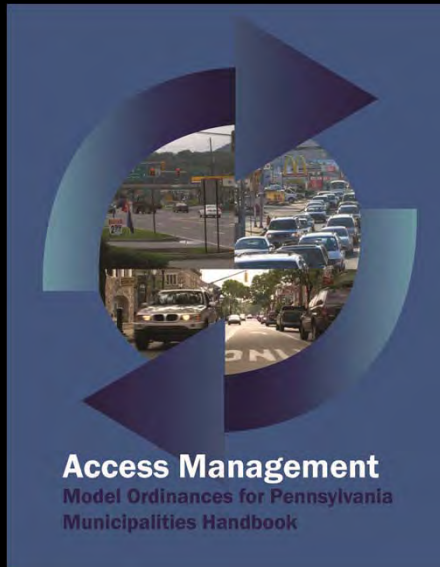
Connected Communities



Connectivity Solutions

- No single solution
- Coordinate transportation and land use
- Consider all modes of transportation
- Build partnerships

PennDOT Policies and Publications



Session B4:
The Use of the Official Map, Access Management, Traffic Calming and Connectivity Ordinances to Improve, the Local Transportation System

Case Studies



Village of Eagle
Upper Uwchlan Township
Chester County, PA



I-95
Philadelphia, PA

Upper Uwchlan Township

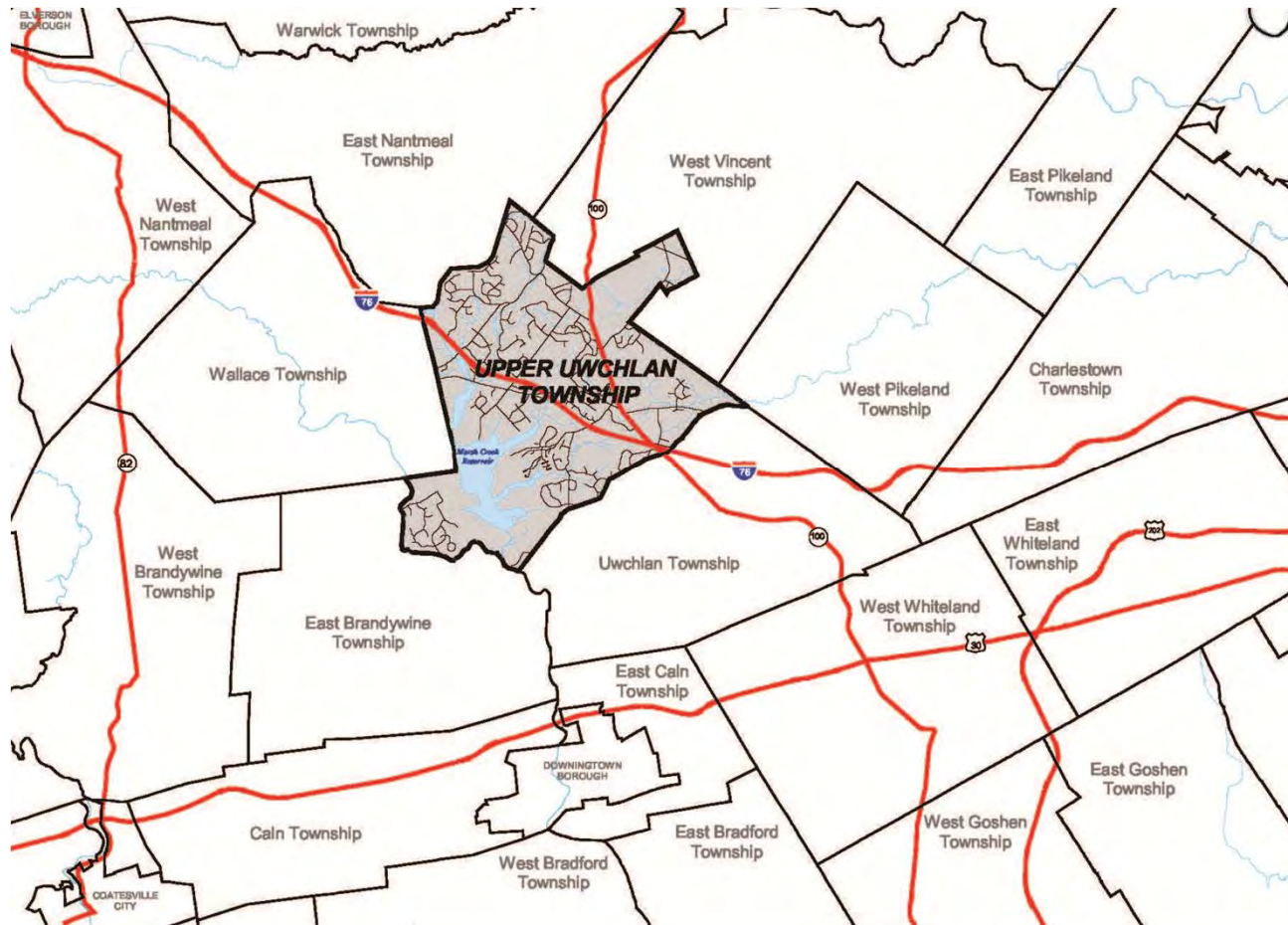


**10 miles to
Pottstown**



**40 miles to
Lancaster**

**75 miles to
Harrisburg**

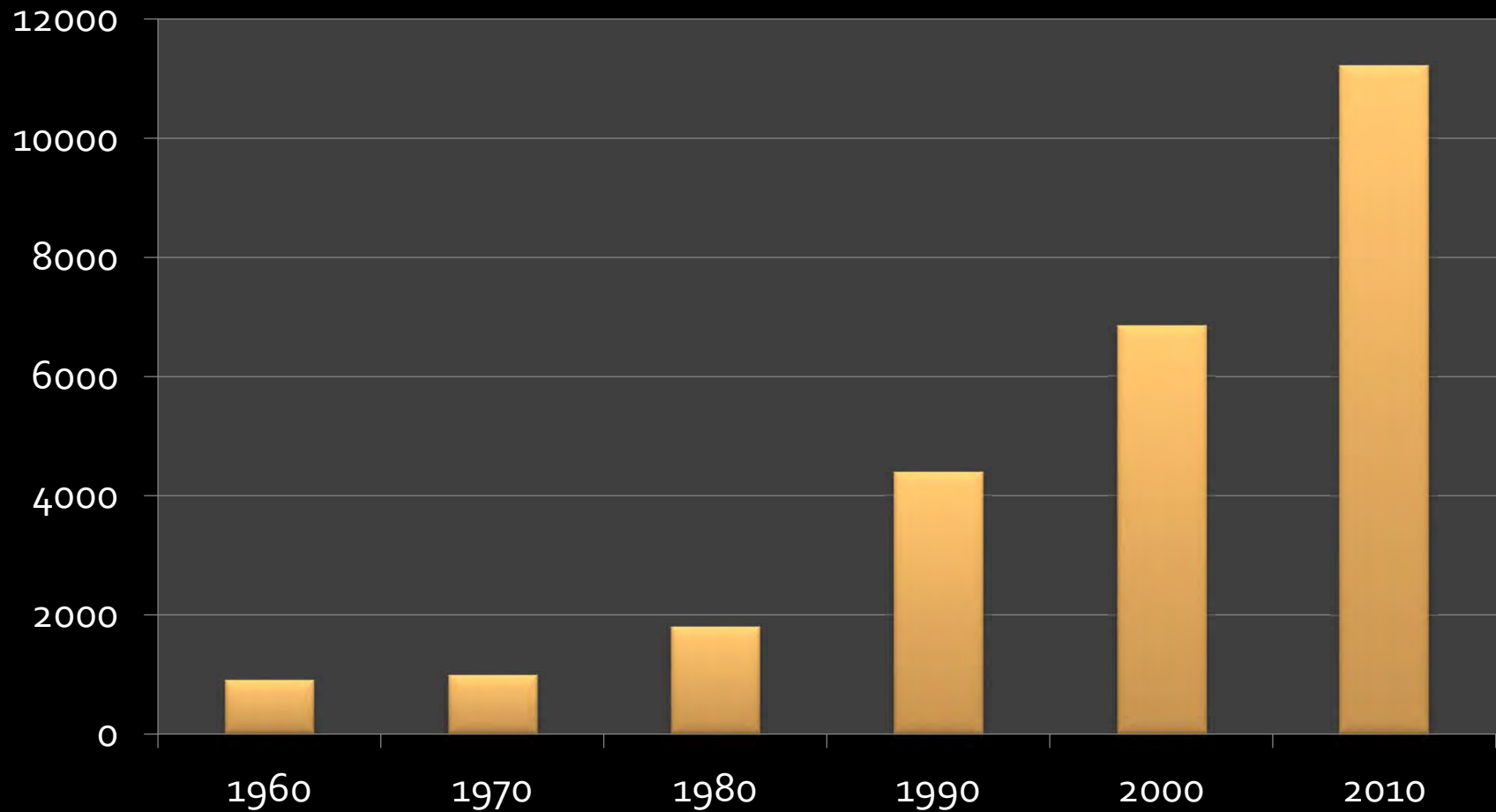


**10 miles to
Great Valley**

**20 miles to
King of
Prussia**

**30 miles to
Philadelphia**

Population Growth



Village of Eagle



21,000 vehicles/day

1990's

1992

Eagle



2002



2006



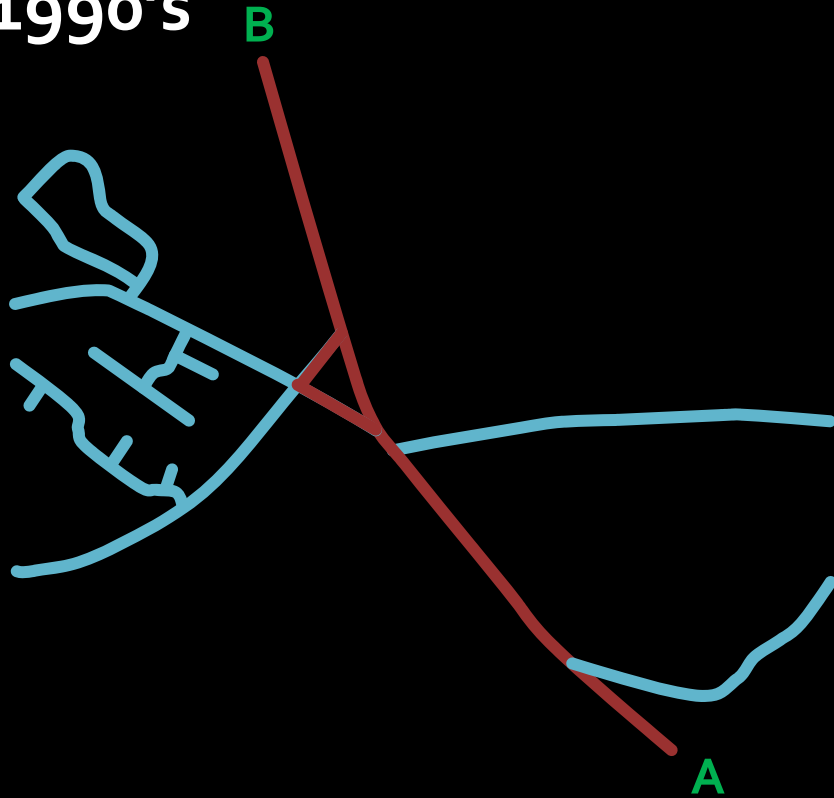
2009

Eagle



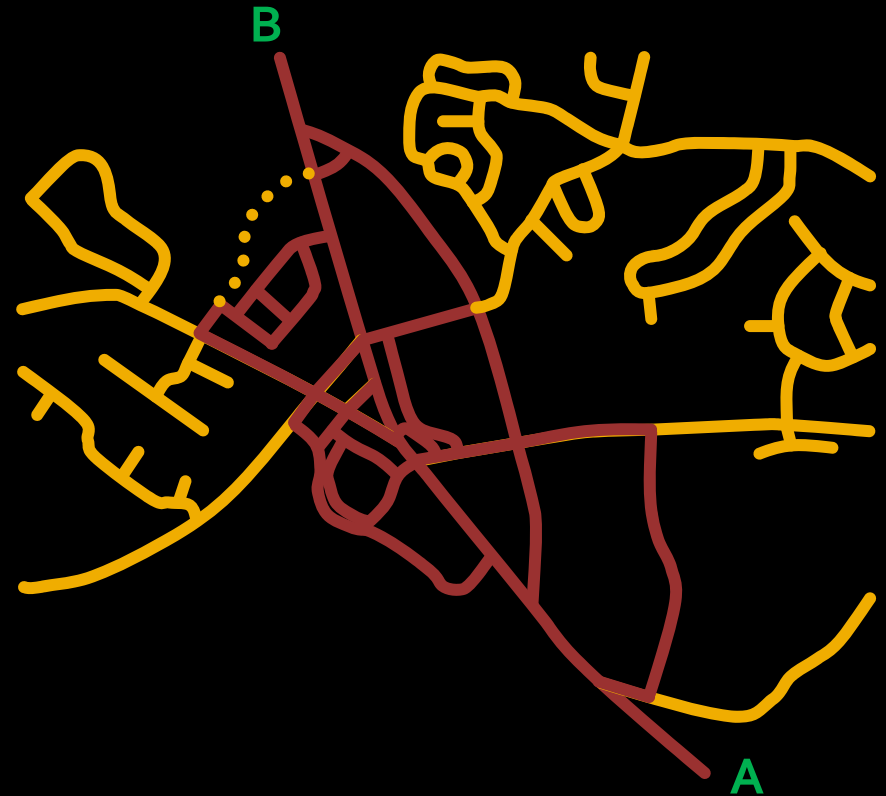
Before and After

1990's



21,000 vehicles/day

2010



34,000 vehicles/day

Connectivity Index

1992



22 links

22 nodes

connectivity index = 1.0

+30%

2010

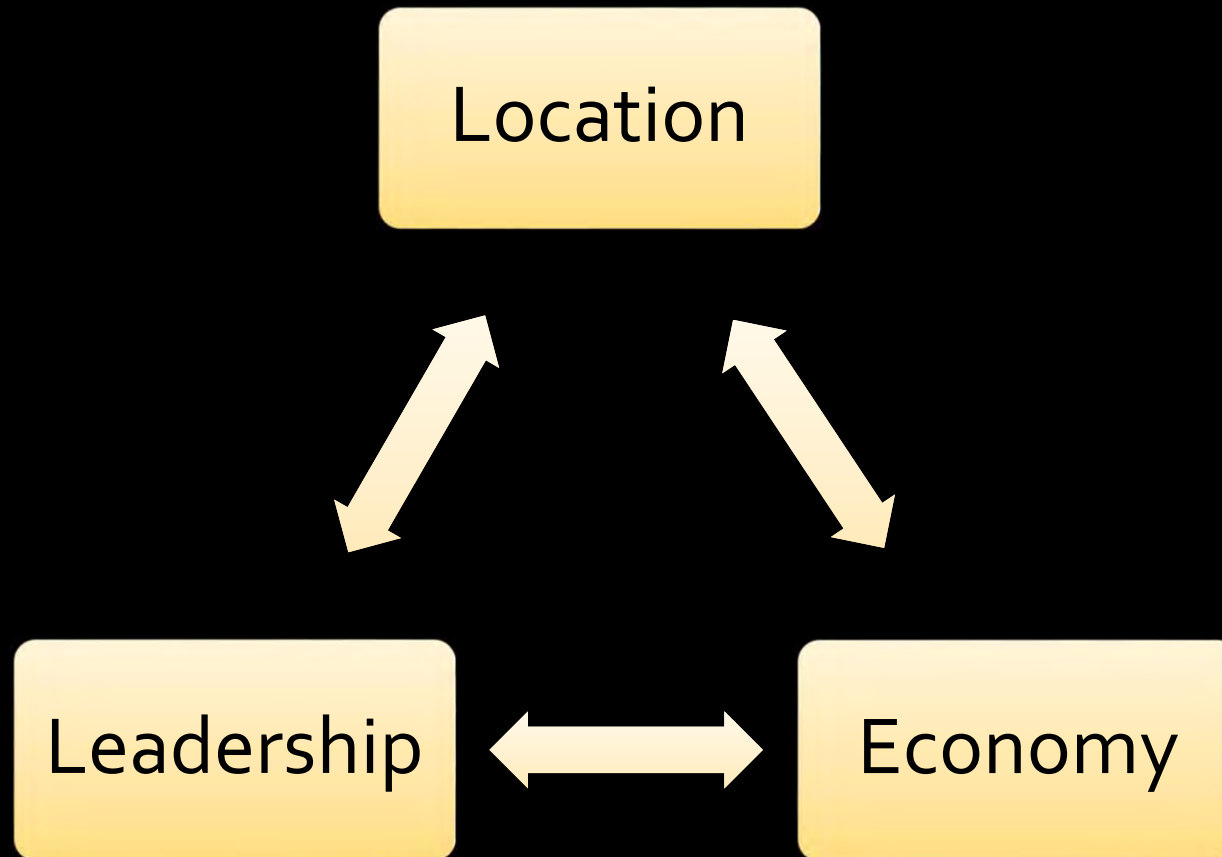


103 links

80 nodes

connectivity index = 1.3

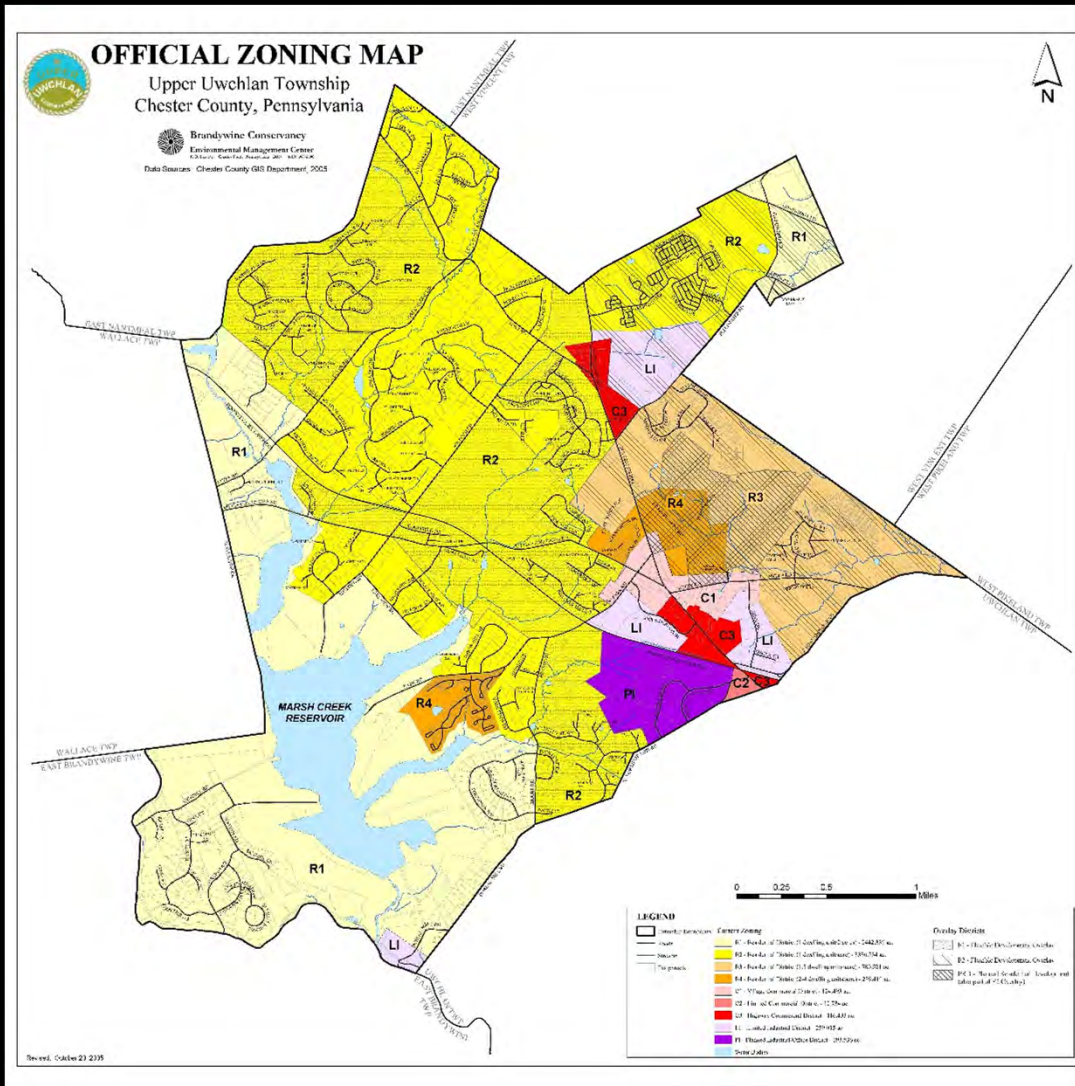
Key Factors for Success



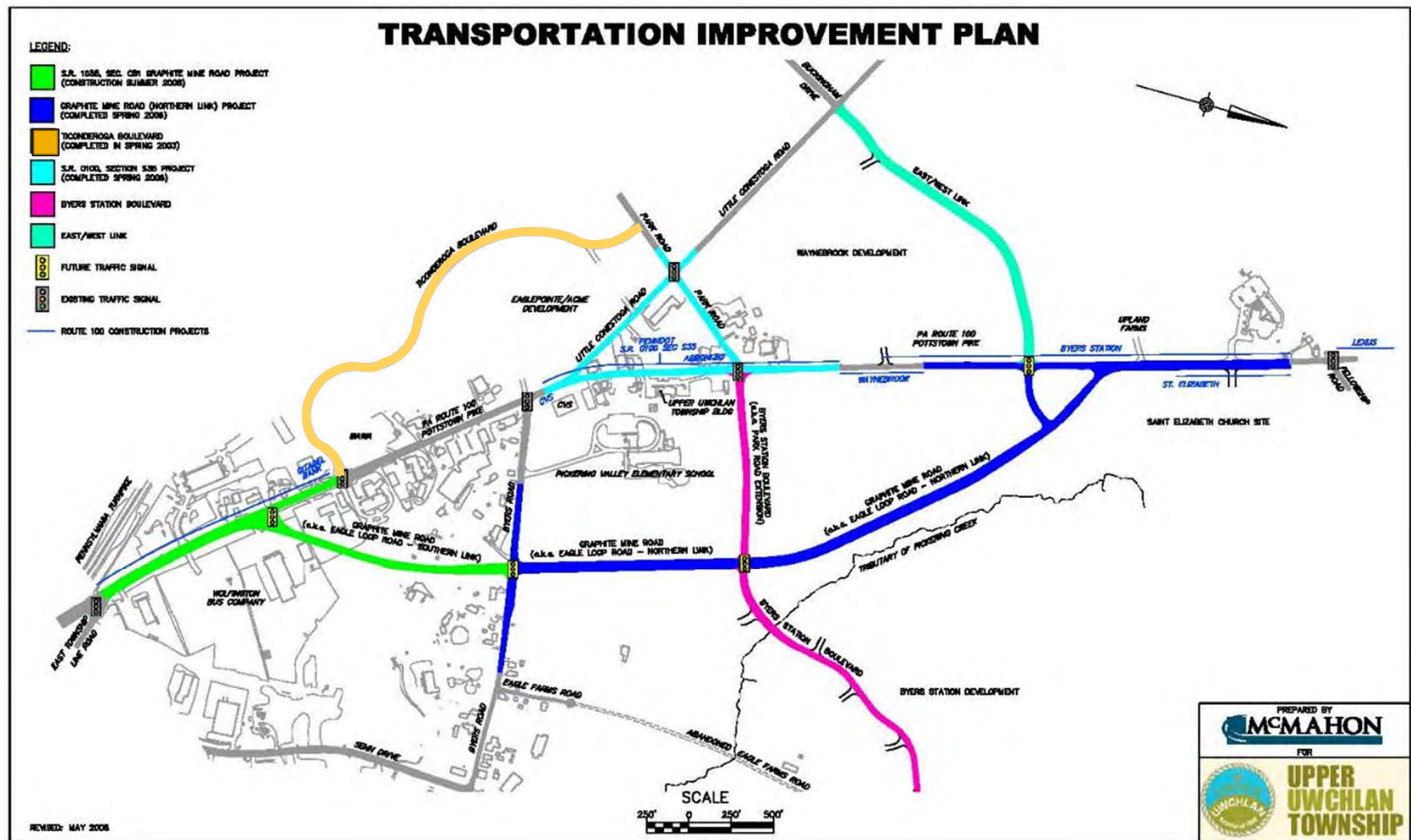
and the Planning Tools!

- Comprehensive Plan
- Zoning Overlay
- Act 209 Transportation Impact Fee Ordinance
- Transportation Capital Improvement Plan
- Official Map
- Access Management Ordinance

Flexible Development Overlay Option

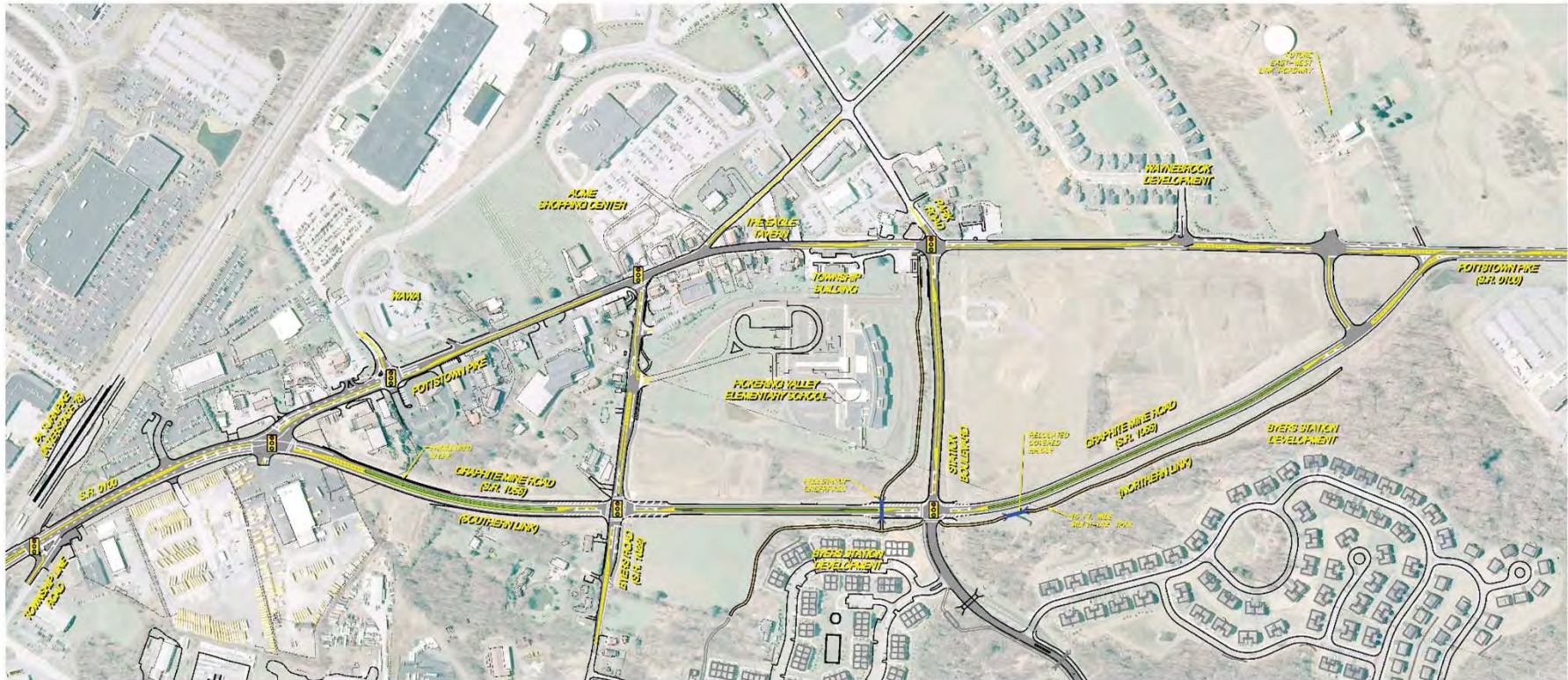


Act 209 Transportation Impact Fee Ordinance



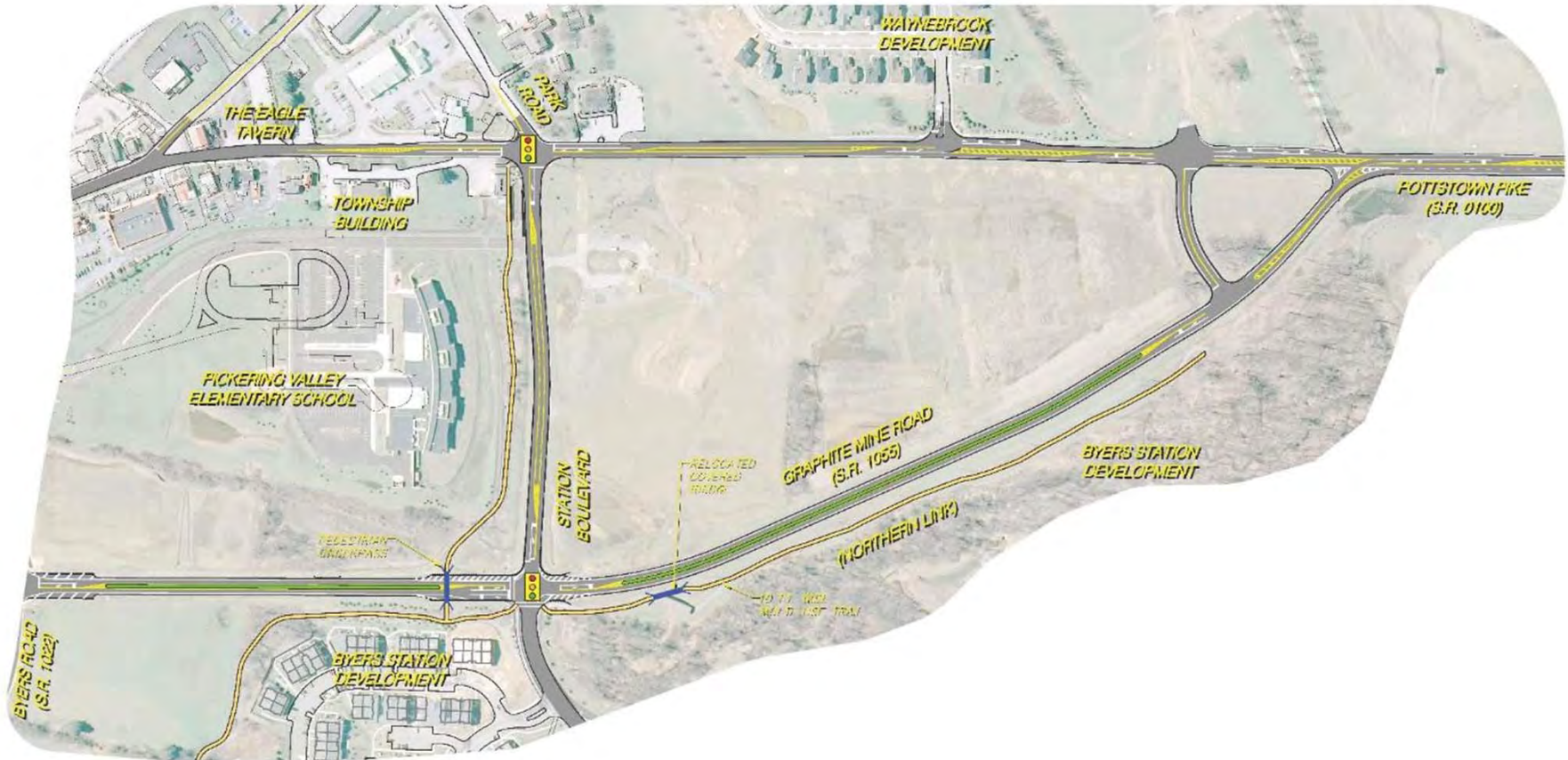
Graphite Mine Road

**GRAPHITE MINE ROAD (S.R. 1055): THE EAGLE LOOP ROAD
HIGHWAY DESIGN PROJECT**



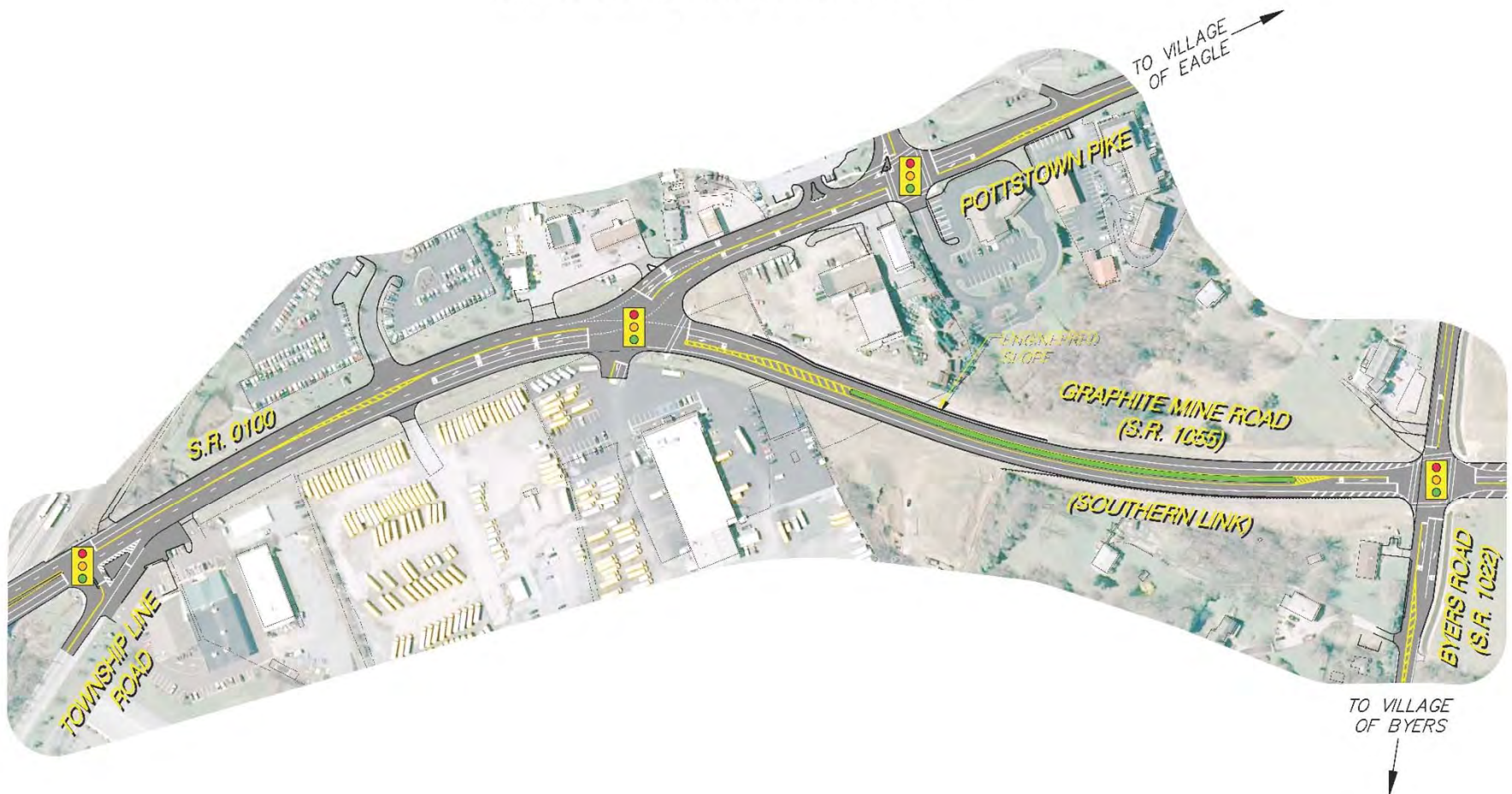
Graphite Mine Road

GRAPHITE MINE ROAD (S.R. 1055): THE EAGLE LOOP ROAD NORTHERN LINK (PHASE 1) HIGHWAY DESIGN PROJECT



Graphite Mine Road

GRAPHITE MINE ROAD (S.R. 1055): THE EAGLE LOOP ROAD SOUTHERN LINK (PHASE 2) HIGHWAY DESIGN PROJECT



Graphite Mine Road 2008



Graphite Mine Road



Graphite Mine Road



Village Concept Committee



Concept Plan

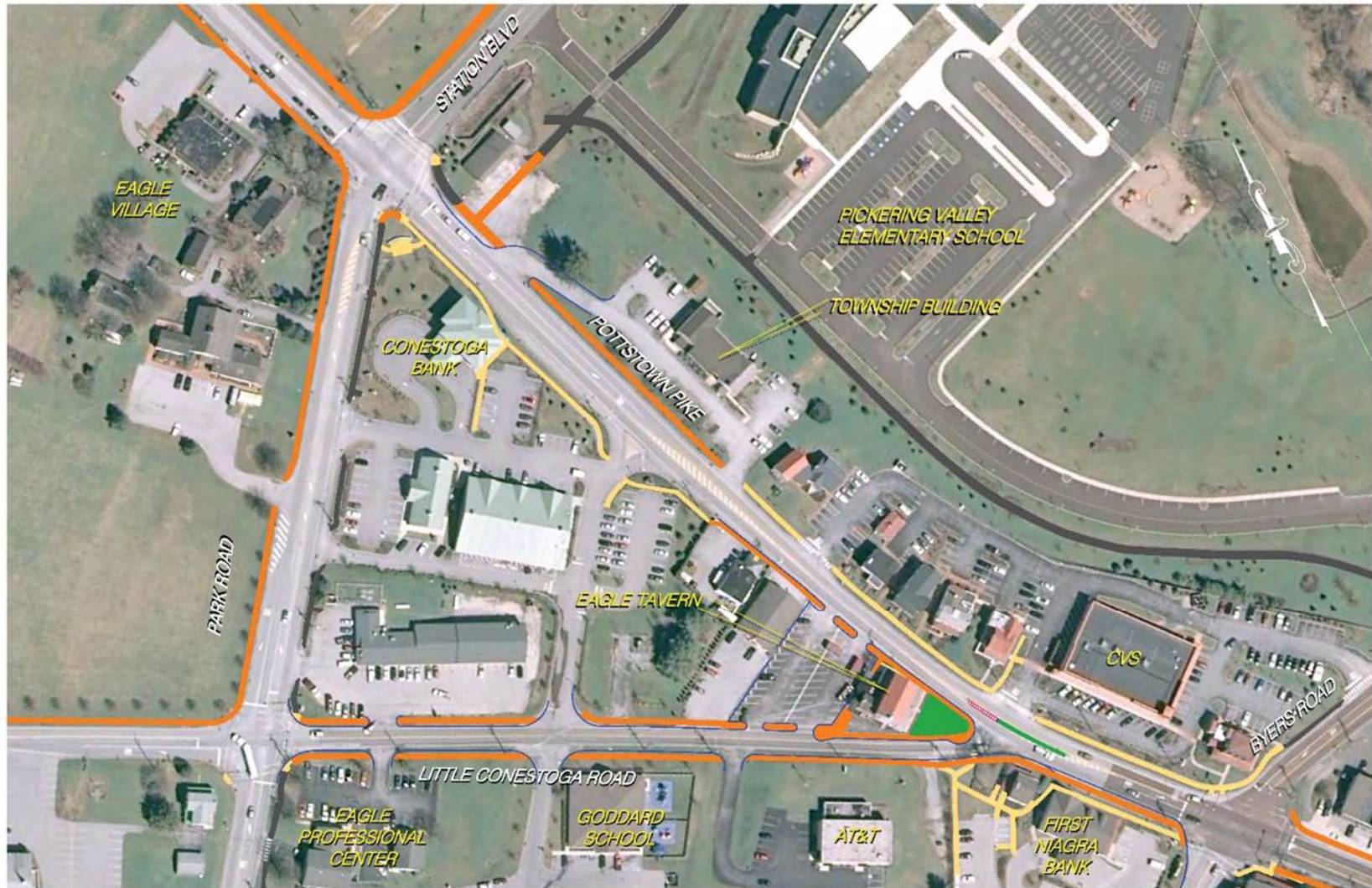


Design Guidelines



Walkability Study

Village Transportation Plan



Block Party



Photo Credit: Stephen Beckman