

Wilhelm Ave and Cornwall Road Intersection Realignment Project

Jonathan Fitzkee

Assistant Director/Senior Transportation Planner
Lebanon County Planning Department

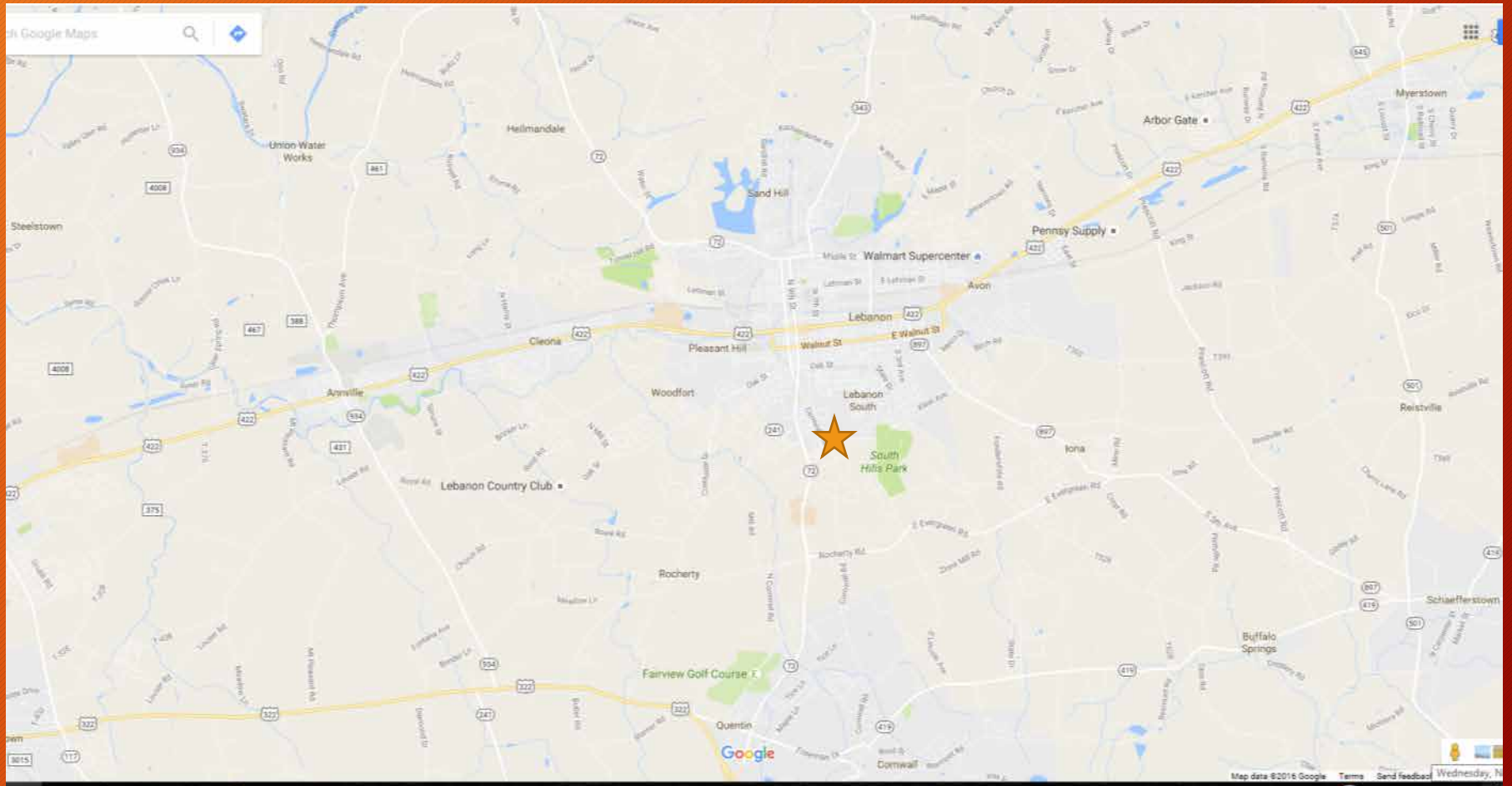
Project Background

- Project located in North Cornwall Township, Lebanon County on SR 2001, Section 013
- Scope of project was to improve a double dogleg intersection that serves as a key connector for the local community and future planned development
- Project was identified in the LEBCO MPO LRTP as a medium range project as part of a master transportation impact study conducted for the North Cornwall Commons Development project.
- The project originally included the evaluation of possible coordinated improvements of the intersections of Cornwall Rd and Wilhelm Avenue and Cornwall Road and York Street.

Project Background (Contd.)

- Key Stakeholders in the project included, Lebanon City School District, City of Lebanon, Lebanon County Planning Department, LEBCO MPO, Lebanon County Commissioners, N. Cornwall Township, S. Lebanon Township, Springwood Developers, Steckbeck Engineering, DCNR, PennDOT, and local property owners.
- Project location required in-depth and careful coordination with a wide range of stakeholders to make the project a real possibility.

Improvement Project Location





Key impacts to the project



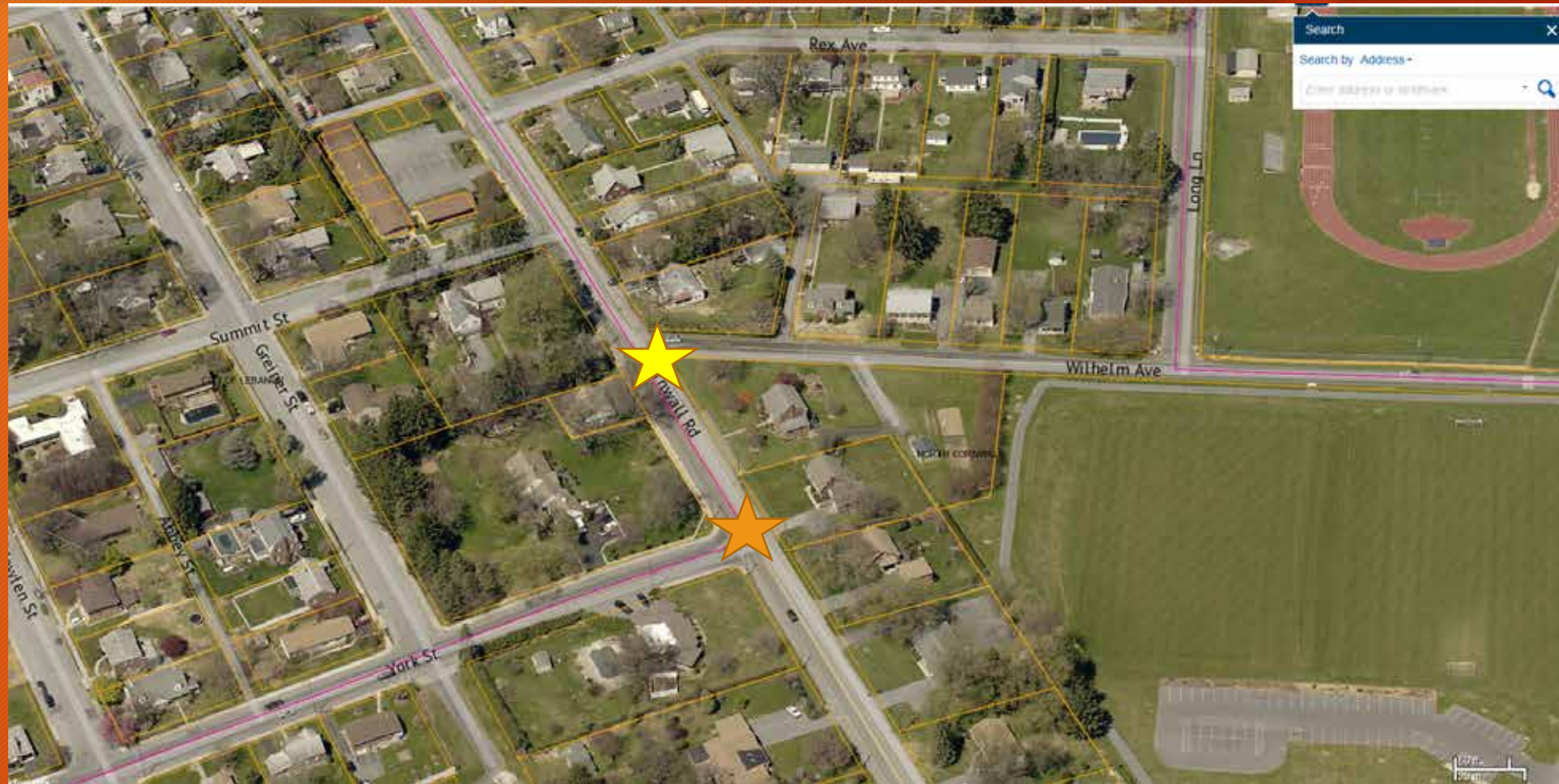


Aerial view of the project site looking westbound

Lebanon High School Facilities

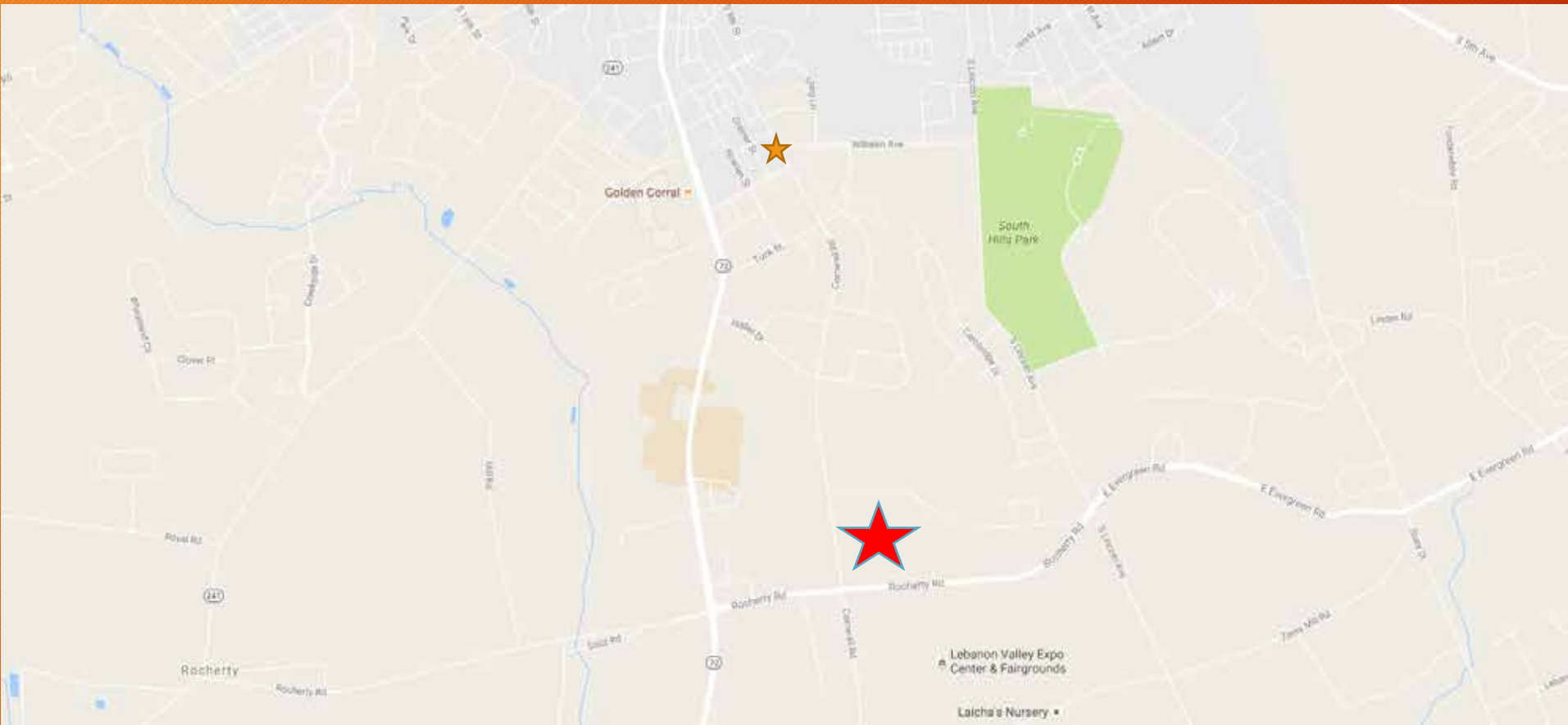


Current Existing Double Dogleg intersections on Cornwall Road





Original Estimates for the Project were nearly \$2.4 Million, however by eliminating one intersection the project costs were cut to nearly \$1.5 Million



The proposed intersection realignment will support additional intersection improvements planned for several intersections south of this project as part of the North Cornwall Commons Development



View of Wilhelm Ave. looking westbound
towards Cornwall Road



View of public utilities junction box at
northeast corner of Wilhelm Ave and
Cornwall Road Intersection



Current Wilhelm Ave and Cornwall Road intersection has existing safety and operational issues due to major development pressures



SR 2001 (Cornwall Road) looking southbound



View of York Street and
Cornwall Road
Intersection looking East



Cornwall Road (SR 2001) and York Street intersection
looking North



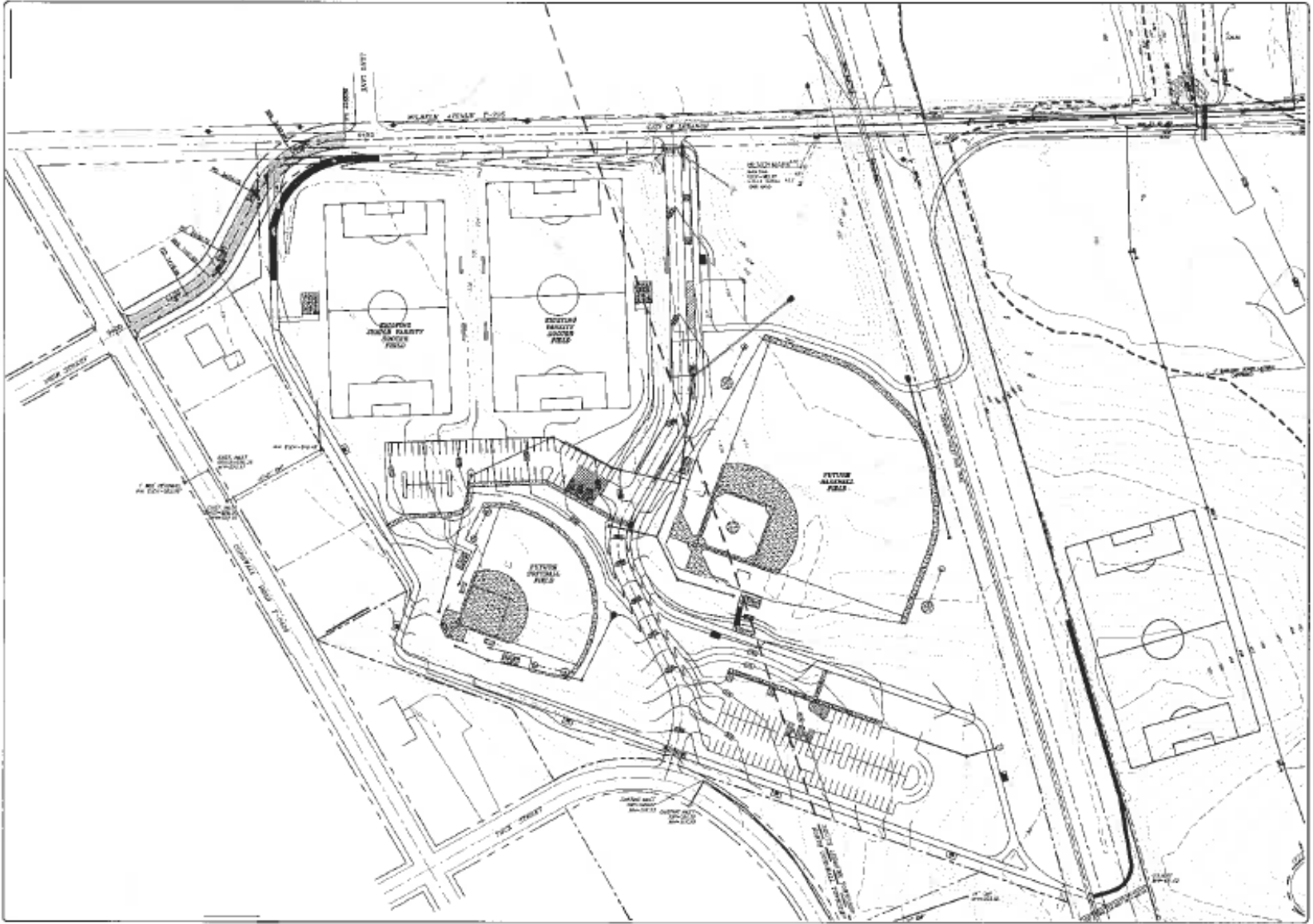
1320 Cornwall Road
Property purchased for \$165,500 utilizing
County Liquid Fuels funding as a result of
action of the Lebanon County Commissioners



Cornwall Road (SR 2001) and York Street Intersection view looking southbound



View from Wilhelm Ave looking southwest toward
1320 Cornwall Road Property



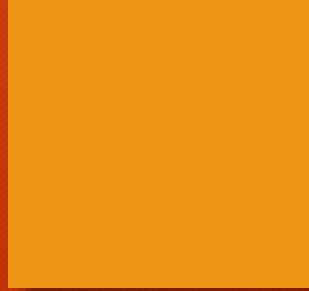
DATE	BY

SKETCH PLAN
 WULFSBERG AVENUE ROAD REALIGNMENT
 North Carroll & South Lakeside, Tennessee
 Lebanon County Development



DESIGN: CDS
 CHECKED: SRS
 DATE: 10/15/10
 SCALE: 1" = 80'
 JOB #: 100-01-000

Questions????



Jonathan W. Fitzkee
Assistant Director/Senior Transportation
Planner

Lebanon County Planning Department
400 South 8th Street, Room 206

Lebanon, PA 17042

717-228-4444

jfitzkee@lebcnty.org