

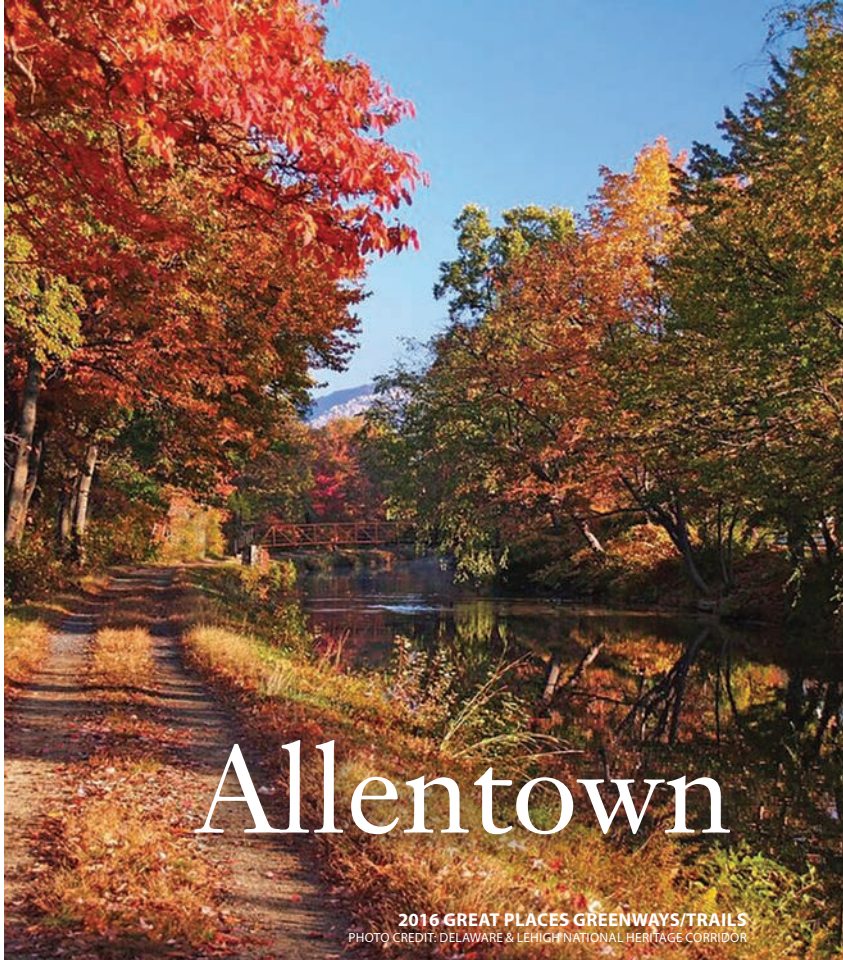


CONFERENCE ANNOUNCEMENT

APA-PA2016

this year!

- **500** Planners Expected!
- **40** Classroom sessions
- **8** Mobile/walking/boating workshops offered
- Up to **12 CM credits**, including Law and Ethics
- Making a return, **Fast – Fun – Fervent** showcasing multiple presenters, multiple topics, seven minutes each
- **Welcome Reception at America On Wheels**
- “Planning For Place and People” **Opening Keynote Session** by **Mitchell Silver, New York City Parks**
- “Growing Philadelphia’s Future at 30th Street Station” **Pitkin Lecture** by **Rina Cutler, AMTRAK**
- Monday reception with the **Exhibitors**
- **Annual Awards** presentation – our best and brightest
- **State of the APA-PA Chapter**
- Tuesday afternoon Desserts with our **Exhibitors**



PA Chapter of the American Planning Association
2016 Annual Conference
Sunday, October 16 – Tuesday, October 18
Allentown, PA
#APAPA16



American Planning Association
Pennsylvania Chapter
Making Great Communities Happen

The largest annual gathering of Planners in PA!

Planning for the FUTURELV

Since 1961 vision prosperity equity diversity



partnerships resiliency preservation connectivity distribution accessibility urbanization



natural resources governance multimodalism infrastructure safety food access automation



globalization public health technology manufacturing energy climate change densification



agriculture economy families migration water freight recreation logistics sustainability



human capital education social media

Lehigh Valley Planning Commission

ANNOUNCING

THE DIVISION OF ARCHITECTURE & ENVIRONMENTAL DESIGN

A COLLABORATION OF THE BUILT ENVIRONMENT
PROFESSIONS AT TEMPLE UNIVERSITY

GRADUATE

Architecture
City & Regional Planning
Landscape Architecture

UNDERGRADUATE

Architecture
Architectural Preservation
Community Development
Facilities Management
Horticulture
Landscape Architecture

CERTIFICATES

Environmental Sustainability
Horticultural Therapy
Landscape Plants
Native Perennial Garden Design
Sustainability
Sustainable Community Planning
Sustainable Food Systems
Transportation Planning

PROGRAM OFFERINGS



Tyler School of Art
TEMPLE UNIVERSITY

YOURGUIDE

Conference At A Glance	4
Many Thanks	6
Featured Speakers	8
Conference Etiquette	10
Conference Planning Committee	11
Special Events	12
Fundraising	13
General Conference & CM Information	14
Mobile/Walking/Biking Workshops	15-18
Educational Sessions	19
Registration/Pricing	38-39
Hotel/Reservations	40
Travel Info	41
Conference Greening	42



American Planning Association
Pennsylvania Chapter
Making Great Communities Happen

Register Online at www.planningpa.org

PA Chapter of APA President — **James Cowhey, AICP**
2016 Conference Chairs — **Shannon Calluori and Sara Pandl, AICP/RLA**

PA Chapter of APA
587 James Drive
Harrisburg, PA 17112
717-671-4510
info@planningpa.org



CONFERENCE @AGLANCE

Mark Your Calendars!
2017 APA-PA
Annual Conference
October 22-24, 2017
The Penn Stater
State College, PA

SUNDAY, OCTOBER 16, 2016

11:00a – 5:30p	Registration Open
1:00p – 4:00p	Mobile Workshop M6 <i>Allentown Historic Preservation</i>
1:00p – 5:00p	Mobile Workshop M1 <i>Winery & Brewery Tour</i>
1:00p – 5:00p	Mobile Workshop M2 <i>Using Regional Partnerships to Make Critical Connections</i>
1:00p – 5:00p	Mobile Workshop M3 <i>Transforming a Steel Town with Arts and Culture</i>
1:00p – 5:00p	Mobile Workshop M4 <i>Easton Revitalization</i>
1:00p – 5:00p	Mobile Workshop M5 <i>River Tour (paddling on the water!)</i>
2:30p – 4:00p	Legislative Committee
2:30p – 4:00p	PMPEI Committee
4:00p – 5:30p	Concurrent Education Sessions A
5:45p	Shuttle to the reception
6:00p – 7:30p	Reception at America On Wheels
Evening	Dinner on your own

MONDAY, OCTOBER 17, 2016

6:00a – 7:00a	Fun Run & Walk
7:00a – 5:00p	Registration Open
7:00a – 6:15p	Exhibit Hall Open
7:00a – 8:00a	Continental Breakfast with Exhibitors
8:00a – 8:15a	Travel Time to Opening Session at nearby church (Zion's Liberty Bell United Church of Christ, 620 W. Hamilton Street)
8:15a – 8:30a	Welcome & Introductions
8:30a – 9:45a	Opening Keynote Session with Mitchell Silver (at the Church)
9:45a – 10:30a	Refreshment Break with Exhibitors (at the Renaissance)
10:30a – 11:45a	Concurrent Education Sessions B
11:45a – 12:00p	Travel Time to Holiday Inn
12:00p – 1:30p	Pitkin Luncheon & Lecture with Rina Cutler
1:30p – 1:45p	Travel Time to the Renaissance
1:45p – 3:00p	Concurrent Education Sessions C
3:00p – 3:30p	Refreshment Break with Exhibitors
3:30p – 5:00p	Concurrent Education Sessions D
5:15p – 6:15p	Evening Reception with Exhibitors
After 6:15p	Dinner on your own or Dine Around option
6:30p – 7:45p	Emerging Professionals: Career Roundtable at Brew Works (No CM)
6:30p – 8:00p	Irv and Mildred Hand Schmooze session at Renaissance Hotel (No CM)
8:00p	Quizzo at Brew Works

TUESDAY, OCTOBER 18, 2016

7:00a – 4:30p	Registration Open
7:00a – 2:45p	Exhibit Hall Open
7:00a – 8:00a	Continental Breakfast with Exhibitors
7:10a – 8:10a	Professional Development Committee Meeting
7:10a – 8:10a	Planning Officials Development Committee Meeting
8:15a – 9:30a	Concurrent Education Sessions E
9:30a – 10:15a	Refreshment Break with Exhibitors
9:45a – 11:45a	Mobile Workshop M7 <i>Eco-restoration in the Lehigh Valley</i>
10:15a – 11:45a	Concurrent Education Sessions F
11:45a – 12:00p	Travel Time to Holiday Inn
12:00p – 2:00p	Luncheon, Annual Awards Presentation and State of the Chapter
2:00p – 2:15p	Travel Time to Renaissance
2:15p – 2:45p	Dessert with Exhibitors (Raffle Drawing, Silent Auction, 50/50)
3:00p – 4:30p	Mobile Workshop M8 <i>Allentown's Rejuvenated Downtown Core</i>
3:00p – 4:30p	Concurrent Education Sessions G

***Engineering firm of choice since
1972***



**KEYSTONE
CONSULTING
ENGINEERS**

Three Regional Locations

East Office Bethlehem, PA 610-865-4555

West Office Wescosville, PA 610-395-0971

North Office Kresgeville, PA 610-681-5233

www.KeystoneConsultingEngineers.com

MANYTHANKS

Will your company be seen at the 2016 PA Chapter of APA Annual Conference?

To become a sponsor or exhibitor, or to advertise in the Final Conference Program, please contact the PA Chapter of APA office at 717-671-4510. **Details are available at planningpa.org.**

**Please consider these companies and organizations when you are seeking partners and consultants for your projects.*

Many thanks to our Sponsors, Exhibitors and Advertisers* (as of August 5)

Platinum Sponsors

- Lehigh Valley Planning Commission
- Temple University, Tyler School of Art, Planning and Community Development
- West Chester University, Geography and Planning

Gold Sponsor

- Johnson, Mirmiran & Thompson
- Kennedy & Associates

Silver Sponsors

- Delaware Valley Regional Planning Commission
- Michael Baker International
- Pennoni
- Peron Development
- RETTEW
- University of Pennsylvania, School of Design

Exhibitors

- 4ward Planning, LLC
- Bergmann Associates
- CHPlanning
- City Center Lehigh Valley
- General Code
- Johnson, Mirmiran & Thompson
- Langan Engineering & Environmental Services
- Mackin Engineering Company
- Maser Consulting P.A.
- Pennsylvania Department of Community & Economic Development
- Temple University, Tyler School of Art, Planning and Community Development
- West Chester University, Geography and Planning
- WSP | Parsons Brinckerhoff

Advertisers

- Broughal & Devito, LLC
- Delaware Valley Regional Planning Commission
- Hanover Engineering
- Howard Kulp Architect, PC
- Johnson, Mirmiran & Thompson
- Kennedy & Associates
- Keystone Consulting Engineers
- LANTA
- Lehigh Valley Planning Commission
- Maser Consulting P.A.
- Michael Baker International
- Pennoni
- Peron Development
- RETTEW
- Spillman Farmer Architects
- Temple University, Tyler School of Art, Planning and Community Development
- University of Pennsylvania, School of Design
- West Chester University, Geography and Planning

Friends

- Central Section, PA Chapter of APA




In-Kind Sponsors

- LANTA



Gettysburg Transit Center



jmt.com | 1-800-472-2310   

Community Planning, Design, Management, and Stewardship

Land Use Planning	Transportation
Urban Revitalization	Transit
Landscape Architecture	Environmental
Construction Management	Facilities

Allentown | Harrisburg | Philadelphia | Pittsburgh | York



Kennedy & Associates



PLANNERS AND LAND USE CONSULTANTS

29 MAINLAND ROAD, HARLEYSVILLE, PA 19438 215.513.1720 LANDPLAN.COM



ARTS WALK

FEATURED SPEAKERS

Monday, 8:30a - 9:45a

Planning for Place and People

COMMISSIONER MITCHELL SILVER, FAICP, NYC Parks
CM | 1.25

Historic demographic shifts in age, race, and household types have huge implications on how we plan and design communities today and tomorrow. These changes have put a new emphasis on planning for place, but more importantly, planning for people. What does this mean to planners? What does planning office of the future look like and how should it function?



Monday, 12:00p - 1:30p

Pitkin Luncheon & Lecture

Growing Philadelphia's Future at 30th Street Station

RINA CUTLER, Amtrak
CM | 1.00

Completed in June of 2016, the Philadelphia 30th Street Station District Plan is a long-range, joint master planning effort led by Amtrak, Brandywine Realty Trust, Drexel University, the Pennsylvania Department of Transportation, and the Southeastern Pennsylvania Transportation Authority to develop a comprehensive vision for the future of the 30th Street Station District in the year 2050 and beyond.

The Plan lays out a vision to support 40 new acres of open space and 18 million square feet of new development, including an entirely new mixed-use neighborhood anchoring the District atop 88 acres of rail yards on the western bank of the Schuylkill River. The Plan is a road map toward an exciting new neighborhood, an incredible gateway for Philadelphia, and a center for new economic growth and opportunity.

The 30th Street Station District will become Philadelphia's next great neighborhood: a place to live, work, learn, and play near one of the nation's busiest and most important transportation hubs and accessible to one-of-a-kind urban and natural amenities.



THE DEPARTMENT OF GEOGRAPHY & PLANNING AT WEST CHESTER UNIVERSITY

is proud to offer undergraduate and graduate level degree programs in planning and graduate certificate programs in GIS and planning.



Be part of a tradition of excellence at WCU

Learn more: Dorothy Ives Dewey at divesdewey@wcupa.edu



MASER
CONSULTING P.A.

Engineers & Design Professionals

PA ■ NJ ■ NY ■ VA ■ FL ■ NM ■ MD 877.627.3772 | maserconsulting.com



h o w a r d k u l p
a r c h i t e c t s , p c

www.hkulparchitects.com | 610.434.6200
facebook.com/howardkulparchitects

Broughal & DeVito L.L.P. CALL US TODAY 610 - 865 - 3664
ESTABLISHED IN 1976



**DEDICATION TO OUR
CLIENTS. YOU MATTER.**

- Business/Commercial/Corporations
- Labor & Employment
- Litigation/General & Commercial
- Personal Injury
- Real Estate/Zoning/Development
- Wills/Estates/Trusts



HanoverEngineering

Municipal Engineering & Planning
Civil · Structural · Environmental
Mechanical · Transportation · Surveying
GIS · Utility Design & Permitting
HanoverEng.com

Offices in Bethlehem, Allentown, Lancaster,
Elizabethtown, Poconos, Towanda,
Wellsboro, and New Castle

*Envisioning and Engineering sustainable,
cost-effective, and environmentally
responsible projects since 1971*



PennDesign

CONFERENCE ETIQUETTE

The Dress Code for the conference is **business casual** attire.

This year's conference will involve walking between different meeting facilities, please dress appropriately and wear comfortable shoes.

Cell phones and other devices that make noise should be disabled during sessions. If you must take a call, please exit the session as quietly as possible and take the call in the corridor.

Room temperatures are difficult to regulate. It is advisable to dress in layers so you can add or remove a layer for your personal comfort.

The conference is a **no-smoking** event. Smoking is not permitted in any conference event, including mobile workshops.

Please be considerate of other conference participants who may have allergies or sensitivities to **fragrances**. If your fragrance is strong, please consider using less of it, or not using it during the day.

APA-PA is **not responsible for the materials or opinions of the speakers you will hear.**

Reasons to come to Allentown:

- Allentown is the third largest city in Pennsylvania
- New development totaling \$1 billion is energizing downtown thanks to Pennsylvania's only Neighborhood Improvement Zone
- PPL Center, an 8,500 seat minor league hockey and 10,000 seat concert venue, opened in 2014 at Seventh & Hamilton streets and is home to the Lehigh Valley Phantoms, the top minor league affiliate of the NHL's Philadelphia Flyers.
- An exciting blend of new and established restaurants



ROZLYNN TONE PAH HOTE, ROBERT SILENT THUNDER



CONFERENCE

PLANNING COMMITTEE

Shannon Calluori, City of Allentown, **Co-Chair**

Sara Pandl, AICP, RLA, Lower Macungie Township, **Co-Chair**

Becky Bradley, AICP, Lehigh Valley Planning Commission

Joe Calhoun, Lehigh and Northampton Transportation Authority

Brendan Cotter, Lehigh and Northampton Transportation Authority

Michael Donchez, Lehigh Valley Planning Commission

Darlene Heller, AICP, City of Bethlehem

Gabe Hurtado, Lehigh Valley Planning Commission

David Kimmerly, City of Allentown

George Kinney, AICP, Lehigh Valley Planning Commission

Bob Korp, Barry Isett & Associates

Eric McAfee, AICP, Lehigh Valley Planning Commission

Matt McGough, Berks County Planning Commission

Steve Neratko, City of Allentown

Tracy Oscavich, Lehigh Valley Planning Commission

Geoff Reese, PE, Lehigh Valley Planning Commission

Richard Roseberry, AICP, Maser Consulting P.A.

Tina Roseberry, AICP, City of Easton

Shannon Rossman, AICP, Berks County Planning Commission

Tracey Samuelson, City of Bethlehem

Charlie Schmehl, Urban Research and Development Corp.

Suzanne Stianche, Discover Lehigh Valley

Molly Wood, AICP, Lehigh and Northampton Transportation Authority

SPECIAL EVENTS

Sunday, 6:00p – 7:30p (gather in lobby for transportation at 5:45)

Welcome Reception: America On Wheels

At 5:45p, meet in the Renaissance Hotel Lobby for transportation to America On Wheels. It wouldn't be an APA-PA Chapter event without time for networking and camaraderie. Join us at **America on Wheels** for an evening of new ways of looking at the history of transportation with fun and fare in the Hubcap Café. Poodle skirts and saddle shoes anyone? On exhibit in October is *A Century of Performance, Cars of the 20th Century*. This reception includes heavy hors d'oeuvres and refreshments.

Monday, 6:00a – 7:00a

Fun Run and Walk

Join with friends and colleagues and explore Allentown on this early-morning exploration. Walkers and runners will set off from the Renaissance Hotel Lobby at 6:00 a.m.

Monday, 5:15p – 6:15p

Evening Reception with Exhibitors

Monday's conference activities wrap-up with a reception with our Exhibitors. Take advantage of this opportunity to network with the Exhibitors and the other conference attendees. It's a great place to make plans to venture out and discover the city of Allentown!

Sunday & Monday Evening

Dinner on your own / Dine-around

Many restaurants and eateries are within walking distance of the hotel with something to please everyone. Allentown will surprise you! On Monday evening, we will organize a Dine Around - go with fellow attendees to the restaurant that most suits your dining preference. Of course, you can always have dinner on your own.

Tuesday, 11:45a – 2:00p

Luncheon, Annual Awards Presentation and State of the Chapter

Join us as we celebrate the achievements of fellow Pennsylvanians who shape where we live, work and play! Join **Denny Puko**, Chair of the PA Chapter of APA Awards Committee, for an inspiring **Annual Awards** program. We will recognize the work of fellow planners, planning officials, and elected officials and their roles in planning Pennsylvania. PA Chapter of APA President, **James Cowhey, AICP** will present the **State of the Chapter** highlighting the Chapter's successes and key activities during 2016. Scholarship recipients will be recognized.



HUBCAP CAFE

SCHOLARSHIP FUND

Support the Next Generation of Planners!
Give to the PA Chapter of APA Scholarship Fund!

...and in other Scholarship Fundraising Committee news, we will also be selling tickets for the yearly **basket raffle, silent auction** and again this year we will be coordinating a **50/50 raffle!**

Your contribution to the PA Chapter of APA Scholarship Raffle will help current planning students with their education-related expenses. Both undergraduate and graduate planning students are finding it hard to make ends meet. Students must not only juggle their academic pursuits, but also pay their bills, which is more difficult with fewer student loan options and higher textbook prices.

HOW TO HELP

- **Make a tax-deductible contribution.** Simply indicate your financial gift when you register for the Conference and include it with your payment. We'll mail a thank you letter for your tax records.
- **Purchase raffle tickets** at the Conference. Help make it fun again this year while raising funds to support new planners. Generous donors contribute a variety of great prizes, from weekend getaways to gourmet food baskets to Pennsylvania-themed gear. Tickets will be on sale throughout the Conference.
- **Participate in the 50/50 raffle!**
- Donate items for the raffle – big or small! Donate a **basket** from your county or region. Reach out to your local attractions for **tickets**. Donate a **book**! Donate a **painting or print**! Are you lucky enough to have a **vacation condo or cabin** you can donate for a week or weekend? Please contact the PA Chapter Office with the details of your give-away at 717-671-4510 or info@planningpa.org.



About the Main Speakers, Sessions, and Certification Maintenance Credits:

The list of approved sessions will be posted on the PA Chapter website, www.planningpa.org, after approval is received from APA.

Following the conference, materials will also be available on the PA Chapter of APA website in electronic format.

A mother's room will be available for mothers of breastfeeding infants. Please see conference registration desk for details.

The PA Chapter of APA is not responsible for the materials or opinions of the speakers you will hear.

Sessions noted below will be helpful in preparing for the AICP comprehensive planning exam; the exam will cover critical areas in APA's outline of subject matter.

- A2. Navigating the Revised Code of Ethics**
- B1. How Community Planning is Being Shaped by MS4 Regulations and Things You Should Consider Moving Forward**
- C2. Small Change/Big Impact: How Storefront Facade Improvements Can Revive Commercial Corridors**
- D1. Revisioning Underutilized Assets & Planning Agency/Academic Partnerships**
- E5. Is AICP Certification for You?**
- F4. Plan Now or Pay Later: Integrating Hazard Mitigation and Comprehensive Planning for More Resilient Communities**
- G4. Beyond Codes: Fair Housing & Inclusionary Zoning**



MOBILEWORKSHOPS

All mobile workshops require an extra fee to cover transportation and other logistics. **These workshops will be cancelled if sufficient participation is not reached.** Please wear comfortable clothing and shoes suitable for walking.



Sunday, 1:00p – 5:00p

(M1) Winery & Brewery Tour: Highlights of Local Agricultural Practices and Products

CM | **3.00**; Additional \$50 fee required.

MINIMUM of 20 registrants; MAXIMUM of 30 registrants*

**Minimum needs to be met or mobile tour will be canceled.*

Participants will learn about regional farming trends in Berks County while having fun sampling locally grown produce including wine from Blair Vineyards and beer from Saucony Creek Craft Brewery. While in route, local experts will give a presentation of current regional trends in agriculture, the economics of agriculture and how local farms are benefitting from buy local, farm to table and other marketing ventures. Blair Vineyards is a family owned winery and vineyard. During the wine tasting and pairing, with locally sourced food, you will hear about the history of the facility and how it operates. At Saucony Creek Craft Brewery, which sources many of their ingredients locally, you will hear about the interconnection of various local farms and businesses that support each other along with the need for unpolluted water to create a well-designed beer. **You will walk during parts of this workshop.**

LOLLY LESHER, Way-Her Farms, LLC

SHANNON ROSSMAN, AICP, Berks County Planning Commission



Sunday, 1:00p – 5:00p

(M2) Using Regional Partnerships to Make Critical Connections

CM | **3.50**; Additional \$30 fee required

MINIMUM of 25 registrants; MAXIMUM of 50 registrants*

**Minimum needs to be met or mobile tour will be canceled.*

Progress in every region in Pennsylvania is guided by a multitude of plans. But how do you move a plan into feasible projects and tangible results? This mobile workshop will share successful techniques to take regionally significant projects and initiatives from the planning phase to completion. Discussion will focus on breaking down big ideas into projects and initiatives that can be accomplished through building and leveraging public-private partnerships. These techniques will be showcased at a variety of parks and trails throughout the Lehigh Valley. Participants will stop at Canal Park to hear about the network of trails being developed in the Valley and the work of local partners to close two trail gaps. The tour will also feature a stop at the Jim Thorpe pedestrian bridge where speakers will explain the challenges of closing complex and costly trail gaps and how partners in the Lehigh Valley have worked together to bring this regionally significant project to fruition. Finally, participants will stop at the Ironton Rail Trail to showcase a fully complete trail and the significant impact the trail has had on the local community. Local stakeholders will discuss the ongoing maintenance and promotion needs of the trail that require continued support and action from diverse local partners even after the "project" is complete. Through these concrete examples, participants will learn successful techniques to focus partnerships on specific goals, create tangible projects, and impact local communities by creating regional assets. **You will walk during parts of this workshop.**

SILAS CHAMBERLIN, PHD, Schuylkill River Heritage Area

BRYAN COPE, Northampton County

ELISSA GAROFALO, Delaware & Lehigh National Heritage Corridor

KELLY ROSSITER, AICP, DCNR



MOBILEWORKSHOPS

All mobile workshops require an extra fee to cover transportation and other logistics. **These workshops will be cancelled if sufficient participation is not reached.** Please wear comfortable clothing and shoes suitable for walking.

Sunday, 1:00p – 5:00p

(M3) Transforming a Steel Town with Arts and Culture

CM | **3.50**; Additional \$10 fee required.

MAXIMUM of 35 registrants

Participants will hear from the planners and community leaders who helped shape and implement the vision to revitalize this area learning the keys to bringing new life through arts and culture. A shared community vision of arts, culture, innovation and economic development is bringing new vitality and excitement to South Bethlehem. Bethlehem's SteelStacks campus, once home to the nation's second largest steel manufacturer, is now a bustling arts and entertainment district. Sands Bethworks is a mixed use casino, shopping, restaurant, and entertainment complex. The Greenway, an urban linear park, connecting many South Bethlehem neighborhoods and highlighted by the SkatePlaza, is a gathering place for several community events and activities. The recently opened National Museum of Industrial History and the Social Still, a craft distillery, will be additional stops on our tour. All featured sites are in walking distance to one another so please wear comfortable shoes. We have a lot of ground to cover! **You will walk during most of this workshop.**

DARLENE HELLER, AICP, City of Bethlehem

Sunday, 1:00p – 5:00p

(M4) Easton Revitalization

CM | **3.50**; Additional \$10 fee required.

MAXIMUM of 35 registrants

Participants will hear about lessons learned and successful revitalization techniques. The Mayor of Easton will provide an on-bus lecture on the revitalization of Easton. When we reach Easton, we will make three stops, the first of which is Simon Silk Mill Redevelopment. At the turn of the 20th century, the Lehigh Valley was the world's second-largest producer of silk, with the industry becoming Allentown's largest employer in the late 1920s. In 2006, the Easton Redevelopment Authority acquired the sprawling campus of the former R&H Simon Silk Mill to spur its reuse. The second stop is Lafayette Visual Arts, where attendees will enjoy seeing Lafayette College's newest addition to its Arts Campus, the last stop is Northampton Street Corridor, which includes the Pomeroy building, Nurture Nature Center and Easton Public Market. **You will walk on parts of this workshop.**

TINA ROSEBERRY, AICP, City of Easton

MAYOR SAL PANTO, JR., City of Easton





MOBILEWORKSHOPS

All mobile workshops require an extra fee to cover transportation and other logistics. **These workshops will be cancelled if sufficient participation is not reached.** Please wear comfortable clothing and shoes suitable for walking.

Sunday, 1:00p – 5:00p

(M5) River Tour

CM | **3.50**; Additional \$50 fee required.

MINIMUM of 10 registrants; MAXIMUM of 40 registrants*

**Minimum needs to be met or mobile tour will be canceled.*

Wildlands Conservancy leads this national award-winning experiential education program that allows participants to engage in an exploration of the “metro wilderness” of the Lehigh River and D & L trail by canoe, with explanation of the health of the waterway, as well as cultural and historical aspects of the area. Wildlands Conservancy’s approach to this program encourages intellectual and ethical development, personal growth, civic and social responsibility, career exploration and serves as an introduction to life-long, healthy recreational activities.

This mobile tour requires you to drive to the start of the tour. More details on where to meet will be provided later. The trip features a paddle ride, beginning and ending at Canal Park in Allentown. Participants paddle 4 ½ miles on a section of flat water with bus transportation back to your car. Equipment and certified professional safety instruction and guiding are all provided.

DIANE MOTEL, Wildlands Conservancy

Sunday, 1:00p – 4:00p

(M6) Allentown Historic Preservation

CM | **3.00**; Additional \$20 fee required

MAXIMUM of 35 registrants

Allentown and West Park historic districts are regulated by a historic district ordinance and a Historic Architecture Review Board (HARB). The presenters will point out the unique features of Allentown buildings and particularly focus on the architectural characteristics of rowhouses in Allentown. The workshop will educate participants about the architectural history and how to identify the style of a building. The historic district ordinance, the HARB review process, and the benefits, issues and challenges of regulating alterations to buildings in historic districts will be discussed. Allentown’s historic preservation zoning will also be discussed including the Historic Building Demolition Overlay, Hamilton Street Overlay and Traditional Neighborhood Design Overlay. Please wear comfortable shoes. **You will walk during this workshop.**

LAUREN GOLDEN, Allentown Preservation League
DAVID KIMMERLY, City of Allentown





MOBILEWORKSHOPS

All mobile workshops require an extra fee to cover transportation and other logistics. **These workshops will be cancelled if sufficient participation is not reached.** Please wear comfortable clothing and shoes suitable for walking.



Tuesday, 9:45a – 11:45a

(M7) Eco-restoration in the Lehigh Valley

CM | **2.00**; Additional \$20 fee required.

MINIMUM of 20 registrants; MAXIMUM of 30 registrants*

**Minimum needs to be met or mobile tour will be canceled.*

Lehigh Valley Greenways is a place-based regional approach to improving the health of critical watersheds and tackling environmental challenges such as flooding and stormwater management. Greenway partners include diverse organizations with complementary missions who work together to prioritize environmental needs, leverage funding and resources, engage and educate citizen volunteers, and restore natural ecosystems through local improvement projects. This workshop will highlight some of the regional eco-restoration work being done in the Lehigh Valley with a walking tour at Illiac's Mill, where Greenway partners will discuss the challenge of large scale stream restorations, particularly in urban environments and at heavily used sites. Speakers will also share how they have engaged and educated local citizens through programs at the Lehigh Gap Nature Center and the Master Watershed Steward program. Participants will learn how partners in the Lehigh Valley are connecting communities to their natural ecosystems and strategies to overcome common eco-restoration obstacles. **You will walk during parts of this workshop.**

KATE BRANDES, Lehigh Gap Nature Center

KRISTIE FACH, Wildlands Conservancy

ERIN FREDERICK, Penn State Extension



Tuesday, 3:00p – 4:30p

(M8) Allentown's Rejuvenated Downtown Core

CM | **1.50**; Additional \$10 fee required.

MAXIMUM of 25 registrants

This tour will include the PPL Center (focusing on the difficult task of assembling the parcels into one cohesive unit), the development of the various City Center Buildings, the Strata Flats apartment complex, and how these structures have fit in so well in the existing downtown fabric. Discussion will focus on building bridges between downtown and adjacent neighborhoods and the design and planning strategies that create community connections. Strategic stops along the way (such as the Strata Roof Deck, or if weather does not permit, the lounge) will showcase before and after pictures of the development as well as information booths set up by Goody Clancy and Upside Allentown regarding the amazing revitalization that the City has seen in recent years. **You will walk during this workshop.**

MITCH HANNA, City Center Lehigh Valley

STEVE NERATKO, City of Allentown



EDSESSIONSAGENDA

Questions?

If you have questions about the conference, please contact the Chapter Office at 717-671-4510 or info@planningpa.org.

Sunday, October 16, 2016

11:00a – 5:30p Registration Open

1:00p – 4:00 p (M6) MOBILE WORKSHOP
Allentown Historic Preservation *(see page 17)*

1:00p – 5:00 p (M1) MOBILE WORKSHOP
Winery & Brewery Tour: Highlights of Local Agricultural Practices and Products *(see page 15)*

1:00p – 5:00 p (M2) MOBILE WORKSHOP
Using Regional Partnerships to Make Critical Connections *(see page 15)*

1:00p – 5:00 p (M3) MOBILE WORKSHOP
Transforming a Steel Town with Arts and Culture *(see page 16)*

1:00p – 5:00 p (M4) MOBILE WORKSHOP
Easton Revitalization *(see page 16)*

1:00p – 5:00 p (M5) MOBILE WORKSHOP
River Tour *(see page 17)*

4:00p – 5:30p CONCURRENT EDUCATION SESSIONS A

(A1) Legal Updates
 CM | **1.50 LAW**

This presentation is geared towards planners, engineers, municipal officials and other similar service/planning entities. Presenters will discuss recent cases and how they relate to municipalities. The session will cover background for each case, who is impacted, outcome, and effects on municipalities.

JOAN LONDON, ESQ., Kozloff Stoudt
MICHELLE MAYFIELD, ESQ., Hartman, Valeriano, Magovern & Lutz, P.C.
ALLEN SHOLLENBERGER, ESQ., The Law Firm of Leisawitz Heller

(A2) Navigating the Revised Code of Ethics
 CM | **1.50 ETHICS**

This session will provide an overview of the changes in the recently amended (2016) Code of Ethics, which were focused on process and procedures. This session will then move on to discussion of various ethical situations faced by planners. These scenarios will be based on a new APA publication, *The Ethical Planning Practitioner*, by Jerry Weitz, FAICP.

RICHARD BICKEL, FAICP
SUSAN ELKS, AICP, Chester County Planning Commission
JERRY WALLS, FAICP



EDSESSIONSAGENDA

Sunday, October 16, 2016 cont.

(A3) Water Design in Urban Environments: Planning and Implementing Green Stormwater Infrastructure
CM | 1.50

Planners, designers, and municipal parties interested in the benefits of integrating stormwater management planning and design will benefit from this discussion of successful Green Stormwater Infrastructure examples, which have travelled the path of planning to implementation. Numerous projects have occurred in urban cities subject to combined sewer consent decrees, and we will discuss how to translate this work to Pennsylvania municipalities that are now facing MS4 permit requirements for quantifiable stormwater improvements. We will highlight the benefits to the community, economy, and environment provided by GSI, and the role that open space, recreation, and capital planning can play in cost-effectively meeting permit and community needs.

SEUNG AH BYUN, PE, PHD, Brandywine Conservancy
ALTJE HOEKSTRA, LEED AP, EIT, Meliora Design

(A4) Company's Coming: Taxation, Zoning, & Licensing for Short-Term Residential Rentals
CM | 1.50

In 2015, with the Pope and tons of visitors heading to town, Philadelphia became the largest city in North America to legalize short-term residential rentals (like the ones listed on AirBnB, HomeAway.com, and through other booking agents). With changes to the City's zoning and tax code, a system was put into place that addressed the interests of property owners renting spare rooms and entire units, the guests they hosted, neighbors and traditional hotel operators. An interdisciplinary group worked together to ensure local legislation matched the reality of activity already occurring and the needs of the community. This session will cover the challenges faced and policy options considered, plus a comparison to other cities and counties across the United States.

ELEANOR SHARPE, AICP, LEED AP, Philadelphia City Planning Commission
MARISA WAXMAN, AICP, City of Philadelphia

2:30p – 4:00p **Legislative Committee**

2:30p – 4:00p **PMPEI Committee**

5:45p **Meet in the lobby for transportation to America On Wheels**
6:00p – 7:30p **Reception at America On Wheels**

7:30p **Dinner on your own**



STATE THEATER



EDSESSIONSAGENDA

Monday, October 17, 2016

- | | |
|-----------------------|---|
| 6:00a – 7:00a | Fun Run & Walk
Wake up with an invigorating walk or run in Allentown! |
| 7:00a – 5:00p | Registration Open |
| 7:00a – 6:15p | Exhibit Hall Open |
| 7:00a – 8:00a | Continental Breakfast with Exhibitors |
| 8:00a – 8:15a | Travel Time to Opening Session at nearby Church |
| 8:15a – 8:30a | Welcome & Introductions |
| 8:30a – 9:45a | “Planning for Place and People”
Opening Keynote Session by Mitchell Silver, FAICP, New York City Parks |
| 9:45a – 10:30a | Refreshment Break with Exhibitors (back at the Renaissance Hotel) |

10:30a – 11:45a CONCURRENT EDUCATION SESSIONS B

(B1) How Community Planning is Being Shaped by MS4 Regulations and Things You Should Consider Moving Forward CM | 1.25

As urbanized communities continue to develop, new pressures by MS4 regulations are changing the ways municipalities look at community planning and development. Stormwater Best Management Practices, nutrient loading, TMDL, pollution reduction plans, stormwater management ordinances and low impact development are becoming items of importance that are being inserted into the way municipalities operate. This session will look at these issues and innovative ways to incorporate them into the planning and development process, and will provide a forum for communities to share new ideas and approaches to integrating MS4 programs into the broader picture of community planning.

FRANK CHLEBNIKOW, AICP, RETTEW Associates
SCOTT RUSSELL, PE, RETTEW Associates
ANDREW STERN, AICP, East Hempfield Township

(B2) Green and Sustainable Parking Lots: Making Them More Than Paved Areas to Park Your Car CM | 1.25

Parking lots can be more than just places to leave your car. With effective landscaping, smart layout and design, and innovative pavement surfaces, parking lots can become an attractive and safe community amenity that can reduce stormwater runoff, minimize water and light pollution, and maintain moderate temperatures. This session will be based upon the recently published Sustainable Green Parking Lots guide produced by the Montgomery County Planning Commission and will examine successful parking lots constructed in the Philadelphia Area.

BARRY JEFFRIES, Montgomery County Planning Commission
JOSEPH SIKORA, RLA, ASLA, Sikora Wells Appel
MICHAEL STOKES, AICP, Montgomery County Planning Commission



EDSESSIONSAGENDA

Monday, October 17, 2016 cont.

(B3) Getting Out From Behind the Wheel: Promoting Walkability at the Local Level
CM | 1.25

Walking is something that just about everybody does every single day. It's crucial to our overall health, is good for the local economy, and surely costs less than driving a car. Yet walking can be a challenge (or dangerous!) if the right infrastructure isn't in place. A unique partnership between Montgomery County's Planning Commission and Health Department has been taking the message of walkability to local schools and municipalities, with great results. This session will focus on how to do a local walkability audit and how to educate local officials and residents that walking can be a fun part of everyday life.

KATIE KUCZ, MPH, Montgomery County Health Department

ANNE LEAVITT-GRUBERGER, AICP, Montgomery County Planning Commission

(B4) A Municipal Approach to Helping Communities Activate Vacant Land
CM | 1.25

Managing vacant land is increasingly an issue for many older cities, while community gardening, urban agriculture and open green spaces have become popular antidotes to fight blight in urban areas. Explore how Pittsburgh and Philadelphia are creating innovative open space networks, building green infrastructure, increasing economic development opportunities, and improving quality of life in their respective city neighborhoods. Learn about the challenges and successes of creating policy, partnerships, and programming that help your municipality encourage individuals and communities to have a stake in activating vacant land, and how you can use vacant land as an opportunity for green jobs creation.

AMBER KNEE, Pennsylvania Horticultural Society

NANCY KOHN, Pennsylvania Horticultural Society

JOSH LIPPERT, ASLA, CFM, City of Pittsburgh

(B5) The Story of the Circuit: Connecting the Dots to Build a Metropolitan-wide 750-Mile Multi-Use Trail Network
CM | 1.25

Trail-based recreation and cycling for transport have grown significantly over the past 25 years. There is also a growing demand to weave active lifestyles, sustainable choices, and interactions with nature into our daily lives. A transportation-worthy, multi-use trail network would be the cornerstone of a new infrastructure that meets these emerging needs. But what's the first step in building a billion-dollar system? For planners, non-profits, and foundations in Greater Philadelphia the first step was to bring fragmented actors across political boundaries under the banner of working toward a singular goal. This session will describe how the formation of "the Circuit" has created new energy and accelerated progress toward achieving the region's ambitious trail network goals.

ANDREW JOHNSON, William Penn Foundation

CHRIS LINN, AICP, DVRPC

SARAH CLARK STUART, Bicycle Coalition of Greater Philadelphia

(B6) If You Build It, How Will They Come?
CM | 1.25

Learn how the City of Allentown welcomes over 10,000 people to the heart of downtown for special events at the PPL Center. This session will include an overview of how public and private sector partners collaborated to implement wayfinding signage, parking policies and connections, pedestrian accommodations, and new traffic signal technologies in a very compressed schedule. Hear fresh perspectives on transportation planning issues from representatives of the City of Allentown and Allentown Police Department.

GLEN DORNEY, Allentown Police Department

CRAIG MESSINGER, City of Allentown

JOHN WICHNER, PE, PTOE, McMahon Associates, Inc.



EDSESSIONSAGENDA

Monday, October 17, 2016 cont.

11:45a – 12:00p Travel time to the Holiday Inn for the Pitkin Luncheon and Lecture

12:00p – 1:30p **Pitkin Luncheon and Lecture**

“Growing Philadelphia’s Future at 30th Street Station”

Pitkin lecture by **Rina Cutler, AMTRAK**

1:30p – 1:45p Travel time to the Renaissance Hotel

1:45p – 3:00p **CONCURRENT EDUCATION SESSIONS C**

(C1) Upside Allentown: A Community-Based Neighborhood Improvement Strategy
CM | 1.25

The City of Allentown central business district is undergoing a major renaissance. Leaders in the City of Allentown recognize the importance of also improving the neighborhood adjacent to the central business district. An initiative, called Upside Allentown, was created to address the challenges faced by the neighborhood, including high unemployment and an aging housing stock. The Upside Allentown strategy is being implemented by a team of over 100 community, non-profit, and business leaders. The strategy focuses on physical improvements, housing, economic development and employment, public safety, marketing, arts and culture and education. The discussion will highlight the organizational structure, funding sources, and accomplishments.

DON BERNHARD, CECD, Downtown Allentown Community Development Initiative
SHANNON CALLUORI, City of Allentown



lantabus.com



EDSESSIONSAGENDA

Monday, October 17, 2016 cont.

(C2) Small Change/Big Impact: How Storefront Façade Improvements Can Revive Commercial Corridors
CM | 1.25

Vibrant commercial corridors help to attract and retain residents and small businesses in Pennsylvania's towns and cities. A designer, a funder, and an implementer share real-life lessons from their work on storefront façade improvements in Philadelphia that can be applied to commercial corridors in other towns and cities: How do existing conditions and architectural characteristic influence renovation decisions? What clever, resourceful façade improvement projects can serve as a model for others? What is the economic impact of reinvesting in storefront façades on corridors and the surrounding community?

MODERATOR: BETH MCCONNELL, Philadelphia Association of Community Development Corporations

ALEX BALLOON, Tacony Community Development Corporation

ROBIN KOHLES, AIA, Community Design Collaborative

JONATHAN SNYDER, City of Philadelphia, Department of Commerce

(C3) Entrepreneurship & Innovation Driving Economic Development in South Bethlehem
CM | 1.25

Since the downturn and eventual closing of Bethlehem Steel, Bethlehem has been reinventing itself. Bethlehem is a leader in entrepreneurship and innovation to drive the City's economic development efforts. With partners like Lehigh University and Northampton Community College and programs like the Keystone Innovation Zone, Bethlehem is home to a growing number of startup businesses and a variety of small business incubators. Projects like the Project for Innovation, Hatch House and smaller co-working spaces create varied environments for local entrepreneurs to grow and flourish. This session will review several programs that have a successful track record and can also be replicated in other communities.

WAYNE BARZ, Ben Franklin Technology Partners/ Ben Franklin Tech. Ventures

LISA GETZLER-LINN, Baker Institute

ASHER SCHIAVONE, City of Bethlehem

(C4) Our Children, Our Neighborhoods: Understanding the Neighborhood Impacts of Market-based School Reforms
CM | 1.25

Non-traditional, market-based school options are rapidly growing in Pennsylvania. Standardized testing provides an abundance of data on student achievement, but the impacts of school choice on surrounding neighborhoods are seldom discussed. These market-based school reforms generate unanticipated spatial implications. The presence of charter schools can have a profound impact on economic stability, political agency, community cohesion, and travel behaviors at the neighborhood level. This session will cover the basics of school reform legislation, explore linkages between the built environment and educational policy and form a framework for understanding the spatial impacts of school choice mechanisms.

LINDSAY HOOLEHAN, Hampton Roads Transit



EDSESSIONSAGENDA

Monday, October 17, 2016 cont.

(C5) Utilizing Planning Methods in the Public Works Department CM | 1.25

Traditional planning concepts and plan development need not be the exclusive domain of the planning department. Lancaster's Public Works staff utilize planning and engineering methods including GIS and stormwater and transportation modeling to identify appropriate strategies for making informed decisions for designing and building infrastructure improvements. Analysis can include assessment of pavement condition, sewershed, slope, and tree canopy; and result in design options and considerations for bike lanes, green infrastructure, street trees, parking, and pedestrian safety improvements. City staff will talk about how they are able to institutionalize these efforts through new and amended city codes, guidelines, regulations, plans and studies.

KARL GRAYBILL, AICP, City of Lancaster
RUTH AYN HOCKER, PE, City of Lancaster
DOUGLAS SMITH, City of Lancaster

(C6) Fast-Fun-Fervent: Transportation CM | 1.25

The session will showcase five presenters, five topics relating to transportation, seven minutes each. It will be fast-moving – 20 slides, each slide 20 seconds, per presenter. Expect presentations to be insightful and at the same time passionate and personal, even witty and provocative.

CHARLES DOYLE, HNTB, *Building A Concrete Career:
Bridging the Gap Between Planners and Engineers*

AUBREY JAHELKA, University of Pennsylvania, *"Oil by Rail": Exploring the
Dependency of Pennsylvania Refineries on Rail Transport from the Bakken Region*

ANDREW SVEKLA, Delaware Valley Regional Planning Commission,
Making Buses Better in and around Philadelphia

ASHLEY NUCKLES, Greater Valley Forge Transportation Management,
TDM in the Workplace

WILLIAM DEGUFFROY, AICP, Chester County Planning Commission,
Chester County's Multi-modal Handbook

3:00p – 3:30p

Refreshment Break with Exhibitors





EDSESSIONSAGENDA

Monday, October 17, 2016 cont.

3:30p– 5:00p CONCURRENT EDUCATION SESSIONS D

(D1) Revisioning Underutilized Assets + Planning Agency/ Academic Partnerships

CM | 1.50

The Lehigh Valley Planning Commission (LVPC) and the PennDesign Graduate School of Landscape Architecture worked with 10 communities in the Lehigh Valley to explore concepts for community and economic development via reactivation of underutilized assets and sites. The students engaged community leaders and citizens to uncover sites and issues that could revitalize local economies via “nature-based placemaking”. The projects stimulated debate and visualized new directions, showing communities new potentials via development and forward thinking programs that solve real world issues. The 2015 Green Stimuli studio investigated the potential role of landscape design in shaping a dynamic future for the Slate Belt of the Lehigh Valley.

BECKY BRADLEY, AICP, Lehigh Valley Planning Commission
ELLEN NEISES, University of Pennsylvania
MAYOR LANCE PRATOR, Portland Borough

(D2) Implementing MS4: Models of Regional Collaboration for Creative, Cost-Effective Compliance

CM | 1.50

Counties are stepping up to the MS4 stormwater permit challenge by creating innovative, intergovernmental partnerships to tackle mandates at a regional level. Hear about successful models in Pennsylvania that have harnessed the power of collaboration to creatively achieve regulatory compliance while minimizing costs and reducing staff burden. Success stories will include on-the-ground, urban green infrastructure projects and examples of missed opportunities. The session will also include a basic overview of the MS4 permit program, its importance in relation to the Chesapeake Bay TMDL, and anticipated future changes to the permit program, so that those not familiar with MS4 can get up to speed. Learn about how this challenge will affect your community and how you can plan ahead.

FELICIA DELL, AICP, York County Planning Commission
MEGAN LEHMAN, AICP, Lycoming County Department of Planning and Community Development

(D3) Confessions of a Wireless Communications Facility Convert

CM | 1.50 **LAW**

In the last 5 years, communities have rushed to create zoning ordinances that strictly regulate wireless communication facilities (WCF) to protect community character without understanding how such facilities are realistically installed. In their haste many communities have inadvertently created needless regulatory barriers for WCF that in many cases have indiscernible community impacts. This session will review the current state of the practice for WCF infrastructure development, discuss associated guiding state/federal regulations that communities must comply with, recommend best practice zoning provisions, and use real world examples to show how WCF are currently deployed with minimal community impact.

LEENA PETERS, Verizon Wireless
KIRK STONER, AICP, Cumberland County Planning Department
JAMES STRONER, ESQ., McNeese Wallace & Nurick



D&L TRAIL

Monday, October 17, 2016 cont.

(D4) Finding Common Ground Amid the Changing Tide: Challenges and Successes in Maintaining Watershed Partnerships Through a Long Term Planning and Political Process
CM | 1.50

Complex planning problems, such as improving watershed health and the responsible stewardship of water resources, have no easy or short-term solutions. Challenges stem from an evolving framework of regulations, relationships, and resources. Philadelphia's integrated water resource management approach has centered on public outreach, partnership-building, scientific monitoring, and planning analysis. Join us for a forum on maintaining partner engagement throughout a long-term planning process. Participants are encouraged to share examples of challenges and successes from their own personal and professional experience in this interactive and thought-provoking discussion.

CHRISTOPHER ANDERSON, Philadelphia Water
MAGGIE RWAKAZINA, AICP, Trans-Pacific Engineering

(D5) Creating a More Efficient Freight Network: Challenges and Opportunities
CM | 1.50

This session will provide an overview of the Pennsylvania State Comprehensive Freight Movement Plan including a discussion on the importance of integrating various transportation modes and the challenges and opportunities to promoting efficient freight movement. The session will also explore the impacts of freight traffic on the road network and motoring public, implications of inadequate truck parking facilities, and truck driver hours of service requirements. Current approaches to lessen the impact of a dwindling truck driver labor pool and increased freight traffic will provide attendees tools that many be applied to other regions.

MODERATOR: GEORGE KINNEY, AICP, Lehigh Valley Planning Commission
BRIAN HARE, PE, PennDOT
CHRISTOPHER LAMM, Cambridge Systematics
DANTE STACIOKAS, Lehigh Carbon Community College Transportation Institute



EDSESSIONSAGENDA

Monday, October 17, 2016 cont.

(D6) Fast-Fun-Fervent: Community and Economic Development
CM | 1.50

The session will showcase seven presenters, seven topics relating to community and economic development, seven minutes each. It will be fast-moving – 20 slides, each slide 20 seconds, per presenter. Expect presentations to be insightful and at the same time passionate and personal, even witty and provocative.

KIMBERLY BAPTISTE, AICP, Bergmann Associates, *ABE-Allentown-Brownfields-Eureka! An Ode to Brownfields*

ADAM TECZA, Group Melvin Design, *Unlocking the Potential of our Civic Assets: Lessons learned from the Pop-Up Pool Project*

DOTTIE IVES-DEWEY, PHD, AICP, PP, West Chester University, *Using 3-D Visualization to Build Community Partnerships*

EWURADJOA DAWSON-AMOA, Promise Neighborhoods of the Lehigh Valley, *Data Driven Place Based Work*

DENNY PUKO, PA Department of Community & Economic Development, *A Challenge to Planners: Streamline the Development Review Process!*

MATTHEW SCHELLY, MCP, MLA, Montgomery County Planning Commission, *Preserving Natural Greenways in a Community: the Upper Salford Township Greenway Guidebook*

CHARLIE SCHMEHL, Urban Research and Development Corp., *Improving Sustainability Through Zoning and Subdivision Regulations*



MUSIKFEST



EDSESSIONSAGENDA

Monday, October 17, 2016 cont.

5:15p – 6:15p Evening Reception with Exhibitors

Evening Dinner on your own (Dine-around options available)

6:30p – 8:00p Irv's Schmooze Session 2016
(No CM Credit)

Irving Hand, with his wife Mildred, proposed the first "Irv's Schmooze Session" which was a feature of the Chapter's annual conference for many years. They were devoted to promoting planning, teaching and mentoring generations of planners. Schmooze Sessions were intended as informal talk about the important ideas, trends and issues in planning. This will be a final Schmooze Session to note Irv's passing on May 14 (1921– 2016) and to share with other planners recollections of what we all have learned of life and planning from Irv and Mildred. Come to this special session to schmooze and celebrate Irving, Mildred, and planning.

STAN LEMBECK, AICP, facilitator

6:30p – 7:45p Career Roundtable for the New & Emerging Planning Professional
@ Brew Works (No CM Credit)

Are you currently a planning student, a recent graduate, or new to the planning profession after a career change? This informal discussion is to help the wide spectrum of new planners from all different backgrounds meet with peers while gaining new insight from experienced professional planners from a variety of disciplines. Discussion will be guided by topics and questions brought to the table, and participating professional planners can offer career advice and resume building strategies based on their experiences. This session will help you build your network and sustain for future networking connections. Come prepared with your professional story (and resume if you choose) to get input on ways to take new direction and get noticed. *(Food and beverage will be available to order.)*

MOLLY WOOD, AICP, Lehigh and Northampton Transportation Authority

8:00p Quizzo at Brew Works

Join your fellow planners for a raucous evening of Quizzo! Hors D'oeuvres will be provided, and a cash bar. A full menu is also available for purchase.



EDSESSIONSAGENDA

Tuesday, October 18, 2016

- | | |
|----------------------|---|
| 7:00a – 4:30p | Registration Open |
| 7:00a – 3:00p | Exhibit Hall Open |
| 7:00a – 8:00a | Continental Breakfast with Exhibitors |
| 7:10a – 8:10a | Professional Development Committee Meeting |
| 7:10a – 8:10a | Planning Officials Development Committee Meeting |

8:15a – 9:30a **CONCURRENT EDUCATION SESSIONS E**

(E1) Fiscal Impact Analysis: New Methods, New Data and Best Practices
CM | 1.25

Fiscal impact analysis, a mainstay of a planning tool to evaluate development and redevelopment proposals, has not advanced significantly from the framework of the 1978 Fiscal Impact Handbook. This session provides practitioners' and researchers' experience in reconceiving and reimagining fiscal impact and the new ability to develop better localized data from the annually released ACS-PUMS data. It will discuss methodological improvements, best practice, and an innovative new method called "reverse" fiscal impact analysis used to evaluate property buy-outs and acquisition proposals in disaster prone area.

PETER ANGELIDES, AICP, PHD, Econsult Solutions
STEVEN NELSON, AICP, Econsult Solutions
SIDNEY WONG, AICP, PHD, Community Data Analytics

(E2) Instituting Reuse: Achieving Successful Adaptive Reuse of Institutional Properties
CM | 1.25

When institutions like schools, religious organizations, government buildings, fraternal organizations, prisons and hospitals need to move or close, they can leave behind large or architecturally-significant facilities. Many types of adaptive reuse techniques have been used to transform these properties into a variety of different uses, including residential, commercial and community uses, all while keeping the neighborhood character intact. This session will provide an overview of these trends, present case studies of innovative and successful projects, and offer best practices for implementation, including insight from the municipal perspective.

CHRISTOPHER LESWING, AICP, PP, Lower Merion Township
BRIAN OLSZAK, LEED GREEN ASSOCIATE, Montgomery County Planning Commission
SARAH RICHARDSEN, ASLA, Montgomery County Planning Commission





EDSESSIONSAGENDA

Tuesday, October 18, 2016 cont.

(E3) Market Based Incentives for Smart Growth

CM | 1.25

While built-out neighborhoods and towns strive to maintain and protect their historic character, many fast-growing communities yearn to enhance their sense of place. Far too often municipal ordinances apply standards that don't support placemaking while the investment and development communities are challenged to adapt to rapidly changing market conditions. By applying market-driven Smart Growth tools including form-based codes, communities can incentivize the creation of vibrant places offering quality and sustainability. Speakers will discuss how to create great places using design-based regulatory planning tools. Our panel will share case studies from Millersville and Narberth Boroughs in PA and the City of New Rochelle NY.

MARK EVANS, AICP, PP, RA, Town Planning Partnership, LLC

SEAN METRICK, Narberth Borough

RICH WILSON, Arcadia Land Company

(E4) Reinventing the Suburban Office Park: Planning and Zoning for Tomorrow's Market

CM | 1.25

Suburban business parks and employment centers are increasingly finding that they cannot address the demands of today's business and development market. In this session, we will explore how to bring new life to older business parks through master planning, zoning, and new development. The session will focus on two case studies in Montgomery County - the Horsham Business Parks and Bala Cynwyd. Government officials, planning experts, and private developers are seeking to transform these aging office parks into dynamic centers that embrace a mix of uses and public amenities in order to maintain the value of a major employment center. The experiences of professionals involved in bringing a new vision to these areas will be shared.

MICHAEL BROOKSHIER, Keystone Property Group

TERRENCE FOLEY, City Avenue Special Services District

SCOTT FRANCE, AICP, Montgomery County Planning Commission

(E5) Is AICP Certification for You?

(No CM Credit)

Are you interested in becoming a certified planner by taking the AICP exam? Not sure yet? The PA Chapter and its Professional Development Committee are here to help you decide. In this session, speakers will explain the benefits and requirements of certification, the application process, and the format of the exam for those trying to decide if or when to take the exam. For those who have already decided to take the exam, speakers will identify resources available to help prepare for testing, including free and cost-based resources. Changes anticipated to be in place for the 2017 exam - including a change in content - will be covered. The session will be driven by the needs of attendees and their specific interests, and questions are encouraged.

SUSAN ELKS, AICP, Chester County Planning Commission

LEAH EPPINGER, AICP, Housing Authority of the County of Dauphin

DAVID MCFARLAND, AICP, Blair County Planning Commission

(E6) Providing Bike Facilities for the Strong and Fearless and Recreational Riders

CM | 1.25

A variety of bicycle facilities and programs are needed to accommodate both the Strong and Fearless bike commuter as well as the Interested but Concerned cyclists who like to ride but will not venture out onto arterial streets. There are often space constraints to accommodate biking facilities and funding is limited. How do you plan for these extreme users? When is it appropriate to add a shared use path, a bike lane, or a protected bike lane? What are the pros and cons of shared lane markings, or "sharrows" that are used to indicate a shared lane environment for bicycles and automobiles but are very controversial? Presenters will provide real world examples and participants will discuss possible solutions to accommodating the wide range of cyclist types.

ROIY GOTHIE, PennDOT

DIANE KRIPAS, PA DCNR

SCOTT SLINGERLAND, Coalition for Appropriate Transportation



EDSESSIONSAGENDA

Tuesday, October 18, 2016 cont.

9:30a - 10:15a Refreshment Break with Exhibitors

**9:45a – 11:45a M7 MOBILE WORKSHOP:
Eco-restoration in the Lehigh Valley** *(See page 18)*

10:15a – 11:45a CONCURRENT EDUCATION SESSIONS F

(F1) The Riverfront Plan: A Shared Vision for a Shared Riverfront
CM | 1.50

Whitemarsh Township and Conshohocken Borough share their stretch of the Schuylkill River with the entire region of central Montgomery County. Hundreds of thousands of vehicles pass by; thousands of commuters hop on buses and trains; and even thousands of bicycles pass through the riverfront area. Redevelopment has energized blighted industrial properties and hundreds of new housing units have been built and are planned. The timing is perfect for Whitemarsh and Conshohocken to create a riverfront project that will create a regional destination, and continuous riverfront park, while improving multi-modal accessibility by connecting the corridor with the regional trails and transit. This session will provide a brief overview of the proposed plan and engage the participants in an interactive session on how to best implement such a complex project.

KENT BAIRD, Carter van Dyke Associates
CHARLES GUTTENPLAN, AICP, PP, Whitemarsh Township

(F2) GIS and Land-Use Decision Making
CM | 1.50

The Land-Use Conflict Identification Strategy model identifies areas most suitable for specific land uses as well as where they conflict. Then it can help build multiple future land use scenarios, each guided by different policy decisions. This model has set the framework for the strategy in developing future land use scenarios, as the Lehigh Valley Planning Commission (LVPC) updates the Southwest Lehigh Multi-municipal Comp Plan (PLANSWL). The model will identify opportunities and conflicts between future land uses including agriculture, urban development, and conservation. The LVPC can then apply different policy decisions to the conflict areas, creating multiple future land use scenarios for Southwest Lehigh County. This session, will discuss how the LUCIS model guides scenarios for PLANSWL.

DAVID MANHARDT, AICP, PP, Lehigh Valley Planning Commission

(F3) Better Buses Benefit Pennsylvania's Cities
CM | 1.50

Planning is underway for major bus transit service improvements in several Pennsylvania cities. Allentown is preparing to introduce an enhanced bus route network in the Lehigh Valley's heaviest transit corridors. Philadelphia is planning enhanced bus service for Roosevelt Boulevard which would coincide with a plan to reimagine the boulevard, while in Pittsburgh the City and Port Authority are partnering to integrate a plan for bus rapid transit into a proposed Eco-Innovation District. Agency representatives will provide their perspectives on these projects.

MODERATOR: DAVID WOHLWILL, AICP, Port Authority of Allegheny County
JUSTIN MILLER, AICP, City of Pittsburgh, Department of City Planning
DAN NEMIROFF, AICP, Southeastern Pennsylvania Transportation Authority
OWEN O'NEIL, Lehigh and Northampton Transportation



EDSESSIONSAGENDA

Tuesday, October 18, 2016 cont.

(F4) Plan Now or Pay Later: Integrating Hazard Mitigation and Comprehensive Planning for More Resilient Communities

CM | 1.50

Integrating community and emergency management planning helps communities develop a better understanding of their risk and vulnerabilities, influence decisions to reduce risk, and improve coordination to ultimately reduce communities' risks. This presentation highlights best practices of how communities across Pennsylvania have used FEMA guidance to coordinate their planning efforts and lower their risk to natural and manmade hazards, and how these efforts aimed at reducing flood risk may result in flood insurance premium discounts under FEMA's Community Rating System Program.

ROBERT GRAFF, Delaware Valley Regional Planning Commission

MARI RADFORD, CFM, Federal Emergency Management Agency's Region III

TONY SUBBIO, CEM, CFM, PMP, Tetra Tech, Inc.

HOPE WINSHIP, Michael Baker International

(F5) SteelStacks Campus: The Transformation of the Bethlehem Steel Site into an Arts and Cultural Campus

CM | 1.50

The SteelStacks Arts and Cultural Campus is a former steel mill site that has been restored, adapted, and transformed into an arts and cultural campus featuring preserved blast furnaces, historic steel mill buildings, an elevated walkway, a visitor center, outdoor plazas, a performing arts pavilion, and an ArtsQuest Center building devoted to performing arts of all types. Redevelopment was funded via a variety of sources and partners. The 9.5 acre site has become a major tourist destination unlike any other in the United States. The session will discuss the elements of historic preservation, brownfield redevelopment, arts and culture, economic development, urban design and tourism that have each been an important component of this site's transformation and success.

ANTONIO FIOL-SILVA, FAIA, AICP, LEED AP BD+C, SITIO Architecture +Urbanism

TONY HANNA, Bethlehem Redevelopment Authority

(F6) Under Pressure - Pipelines and People: How to Get the Information You Need to Understand and Manage Pipelines

CM | 1.50

Major pipeline projects resulting from the boom in shale gas extraction have had a significant impact on communities in their path. The need for a central information clearinghouse between pipeline operators, residents, and local municipalities became clear as these projects were proposed in Chester County. The Chester County Pipeline Information Center (PIC) was created to address pipeline communication and project concerns. Municipalities can also address pipeline safety at the local level through best planning practices and ordinance regulations. This session will address both enhancing pipeline communication between stakeholders and provide specific tools for pipeline planning at the local level.

JOHN GAADT, AICP, Gaadt Perspectives, LLC.

CAROL STAUFFER, AICP, Chester County Planning Commission



EDSESSIONSAGENDA

Tuesday, October 18, 2016 cont.

- 11:45a – 12:00p Travel time to the Holiday Inn**
- 12:00p – 2:00p Luncheon, Annual Awards Presentation and State of the Chapter**
- 2:00p – 2:15p Travel time to the Renaissance**
- 2:15p - 2:45p Dessert with Exhibitors & Announcement of Winners (Basket Auction and 50/50)**
- 3:00p - 4:30p (M8) MOBILE WORKSHOP:
Allentown's Rejuvenated Downtown Core *(see page 18)***

3:00p - 4:30p CONCURRENT EDUCATION SESSIONS G

(G1) Starting a Local Food Revolution: The Story of the Lehigh Valley Food Policy Council
CM | 1.50

Spur a food revolution in your region through launching a food policy council. Learn how sixteen Lehigh Valley organizations built support and capacity and are working together to reduce food insecurity and grow the local food economy. Hear how the concept of Collective Impact allows diverse organizations to work together and gain traction toward the same goals and how facilitated discussions using the Art of Hosting techniques helped stakeholders connect, share information and collaborate.

MODERATOR: SARA PANDL, AICP, RLA, Lower Macungie Township
JESSE BARRETT, Rodale Institute
SUSAN DALANDAN, CACLV
JOYCE MARIN, MBA, RenewLV

(G2) The Implementable Comprehensive Plan Revisited
CM | 1.50

Born at the 2011 APA PA Conference, the Implementable Comprehensive Plan is “learning to walk.” An Implementable Plan promotes focus on real community issues instead of the MPC template, a results-oriented and engaged process instead of the writing of a big book, and creation of capacity to implement instead of hoping for action after the plan is done. The session will revisit the five keys for an Implementable Plan. It will address misconceptions that an Implementable Plan is not a “true” comprehensive plan. Presenters will talk about “aha!” moments in an Implementable Comprehensive Plan they are assisting in the City of Jeannette.

JIM PASHEK, RLA, LEED GA, Pashek Associates
DENNY PUKO, PA Department of Community & Economic Development

(G3) Lehigh Valley Return on Environment Implementation
CM | 1.50

This session will discuss key results from the Lehigh Valley Return on Environment study that documented the economic value of open space plus discuss how the report has enhanced open space conservation implementation in the Lehigh Valley. Implementation of the study will be discussed from the perspectives of Wildlands Conservancy, which is actively working to preserve and restore natural resource areas and United Way of the Greater Lehigh Valley, which is working to organize resources and efforts to achieve greater collective impact.

CHRISTOPHER KOCHER, Wildlands Conservancy
GEOFFREY REESE, PE, Lehigh Valley Planning Commission
MARCI RONALD, United Way of Greater Lehigh Valley



EDSESSIONSAGENDA

Tuesday, October 18, 2016 cont.

(G4) Beyond Codes: Fair Housing + Inclusionary Zoning

CM | **1.50 ETHICS**

Starting with a discussion of the ethical obligations of planners and aspirational principles of the AICP Code of Ethics, this workshop will discuss three of the most essential tools used to ensure that all people have access to housing of basic standards: Fair Housing, Building Codes and Inclusionary Zoning. It is essential that municipalities learn what they must do to comply with the Fair Housing Act, particularly in regard to planning, zoning administration, and legislation affecting housing types, housing design and the various classes of individuals protected by the Fair Housing Act. The session will offer real-life examples of fair housing violations and will teach planners how they can work in their respective jurisdictions to provide housing types that are available and accessible to everyone.

ERIC MCAFEE, AICP, LEED AP, Lehigh Valley Planning Commission

LORI MOLLOY, ESQ., North Penn Legal Services

RACHEL WENTWORTH, Housing Equality Center of Pennsylvania

(G5) Zoning Hearing Board Testimony Tips, Tricks and War Stories

CM | **1.50 LAW**

Presenting to the zoning hearing board can be tricky, particularly if a project is unpopular with the public or has opposing legal counsel. The presenters will offer tips and tricks for preparing, presenting, and questioning testimony for a zoning hearing. Session attendees will come away with a greater understanding of this legal proceeding, whether acting as municipal staff or expert testimony.

BOB COX, PE, PLS, Barry Isett & Associates

CHARLES STOPP, ESQ., Steckel & Stopp, Attorneys at Law

(G6) WALKLV: Sidewalk and Crosswalk Inventory

CM | **1.50**

The Lehigh Valley sidewalk and crosswalk inventory is the first of its kind for the region and is intended to provide a regional assessment of sidewalk connectivity and accessibility. The initial study effort utilized aerial imagery and field work to inventory sidewalks and marked crosswalks. The results of this inventory were then analyzed against the regions trail system and transit stop inventory to identify significant gaps. This report will lay the groundwork for a future regional bicycle and pedestrian planning study and can be used to underpin a variety of additional planning exercises. The results are publicly available through GIS and the program is transferable.

BRENDAN COTTER, Lehigh and Northampton Transportation

GEORGE KINNEY, AICP, Lehigh Valley Planning Commission

DAVID MANHARDT, AICP, Lehigh Valley Planning Commission

The D&L Trail (Carbon, Luzerne, Lehigh, Northampton and Bucks counties) won a 2016 Great Places award from the Chapter as a “Greenways/Trails”

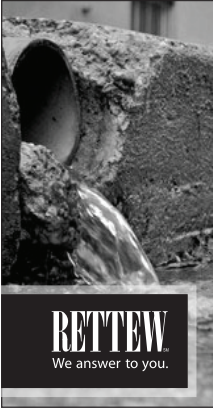


The D & L Trail is located along the Delaware and Lehigh Rivers and follows the 165-mile historic pathway that anthracite coal took. It has resulted from a public-private partnership, with the D & L Corridor organization working with landowners and stakeholders to conserve cultural and natural resources in the five-county region. The Trail offers opportunities for walking, running, hiking, bicycling, cross country skiing, and snow shoeing. With 44 trailheads, the trail is accessible to thru travelers, as well as daily recreational users and commuters. Respondents to a 2012 user survey included people from three countries and 17 states, with the majority being from 27 different counties in Pennsylvania. Trail users experience diverse geography and cultural landscapes, as well as an incredible variety of scenery, communities, landscapes and nationally significant heritage attractions. Communities along the D & L Trail embrace it as a meeting place for festivals, races and other events that bring people together. Additionally, the Trail serves as the long distance spine for other regional trails such as The Circuit, East Coast Greenway, 9-11 Memorial Trail, and Ironton Rail Trail. Our cover photo features The D & L Trail.

Take a look at 2014 Great Places

<http://planningpa.org/great-places-archive/2014-great-places/>
for two other awards

West End Theater District, City of Allentown (Great Places Neighborhood)
Steel Stacks Campus, City of Bethlehem (Great Places Public Space)



MS4 - The Planner's Strategy

MS4 Coordination
and Support
Engineering
Community
Planning
Stormwater
Management

1-800-738-8395
rettew.com | [f](#) [in](#) [t](#)

PENNSYLVANIA
Lancaster • Lehigh Valley
Mechanicsburg • Pittsburgh
Williamsport

PERON DEVELOPMENT

Bethlehem, Pennsylvania

SHAPING
*Greater Philadelphia's
Growth*



www.dvrpc.org [f](#) [t](#) [in](#) [●●](#) [ig](#)

Michael Baker
INTERNATIONAL

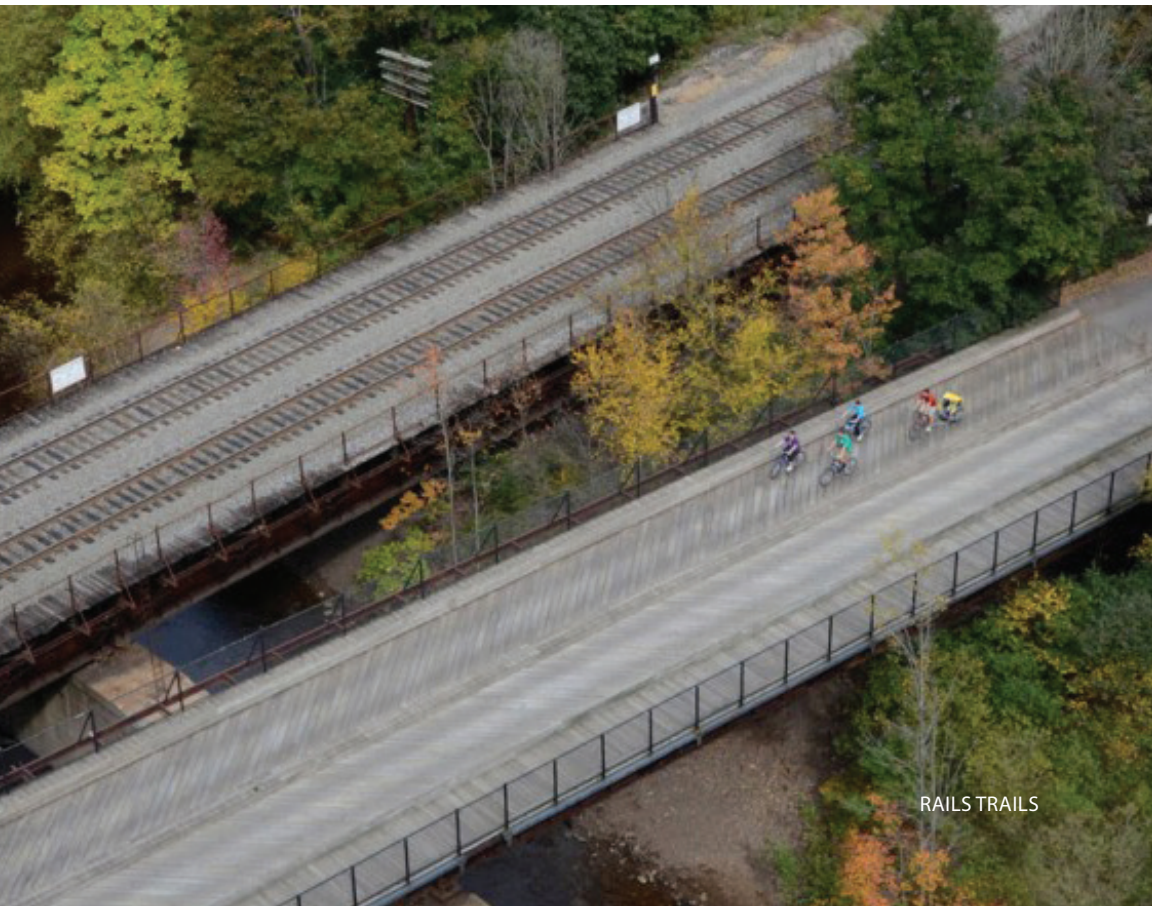
We Make a Difference



Planning strong, healthy and sustainable
communities worldwide

Allentown • Harrisburg • Philadelphia • Pittsburgh

MBAKERINTL.COM



RAILS TRAILS

REGISTRATION/PRICING

Online registration is EASY.
Visit <https://www.regonline.com/PAAPA2016>
or click on the portal on the Chapter website.

With two main speaker sessions, 40 concurrent sessions and eight mobile workshops, plus exhibits and networking opportunities, the PA Chapter of APA's 2016 Annual Planning Conference is the Pennsylvania planning gathering of the year. Reserve your spot today!

Registration

Register for the conference at <https://www.regonline.com/PAAPA2016>
You'll find full details on all conference activities and an online version of the conference announcement. Remember, PA Chapter of APA members pay discounted rates for the conference.

What You Need To Know About Online Registration:

It's Easy!
Payment is not required at time of registration. You can choose to pay by check or credit card. If you choose credit card payment, we will email an invoice to you to pay via "Square". You can register multiple attendees (group registration) at one time.

Still need to register via a paper form?

Contact the PA Chapter of APA Office at info@planningpa.org or 717-671-4510 to request a paper registration form. A \$10.00 administrative fee applies for processing of paper registrations.

Save big when you register by September 12!

REGISTRATION FEES

	EARLY BIRD DEADLINE September 12	REGISTRATION DEADLINE October 3
Professional Planner		
Full Registration* YOUR BEST DEAL	\$385	\$435
Sunday**	\$95	\$120
Monday	\$225	\$250
Tuesday	\$190	\$215

Emerging Planners Discount – First year professional planners receive a 20% discount off the Professional Planner registration fees. Discount applied during online registration. Does not include Mobile Workshops.

Planning Commissioners/Officials Discount (Elected or Appointed, non-professional)
Planning Commissioners/officials receive a 20% discount off the Professional Planner registration fees. Discount applied during online registration. Does not include Mobile Workshops.

Retired Planner? You too can take a 20% discount. Receive a 20% discount off the Professional Planner registration fees. Discount applied during online registration. Does not include Mobile Workshops.

Students		
Sunday	\$22	\$22
Monday	\$70	\$70
Tuesday	\$58	\$58

* includes all receptions
** includes Sunday reception



- **Full Registration** includes education, meals, refreshment breaks, AND **Sunday AND Monday night receptions.**
- **Sunday Only** includes education and refreshment break, AND **Sunday reception.**
- **Monday Only** includes education, continental breakfast, refreshment breaks, lunch and Monday night reception.
- **Tuesday Only** includes education, continental breakfast, refreshment breaks and lunch.
- Mobile workshops have additional fees to cover added logistics and transportation costs.
- **Late and Walk-in Registrations:** An additional \$50.00 administrative fee applies to all registrations received after October 3.

A LA CARTE OPTIONS

Mobile Workshops (<i>logistics and transportation fee</i>)	<i>varies per workshop</i>
Sunday Welcome Reception (<i>Included in full and Sunday registration, but not for the Monday only registration</i>)	\$50
Meal Package (<i>For guests of attendees. Includes continental breakfasts, refreshment breaks, and lunches, and receptions. Education is not included.</i>)	\$285

Remember the Scholarship Fund when your register and make a donation.

THE FINE PRINT

Fee, Refund and Other Policies:

- Non-Members** (*you do not belong to any APA Chapter*) add \$50.00
- APA Members from New Jersey or Delaware** add \$10.00
- APA Members from other states** add \$20.00

Late and Walk-in Registrations: An additional \$50.00 administrative fee applies to all registrations received after October 3.

All paid registrations will receive an email confirmation of registration (*when a valid email address is provided*).

Registration fees include all applicable conference sessions and materials, and the meals listed herein. They do NOT cover lodging accommodations, any non-conference meals, and travel expenses.

The registration fee is fully refundable if the PA Chapter of APA office receives written notification postmarked or emailed no later than September 23, 2016.

Cancellations received after September 23, 2016 but before October 7, 2016, will be subject to a \$50.00 administrative fee. If the cancellation is received after October 7, 2016 we are not able to provide a refund.

NO-SHOWS WHO HAVE REGISTERED, BUT HAVE NOT PAID, ARE STILL LIABLE FOR THE REGISTRATION FEES.

In the unlikely event of cancellation of the conference, the Pennsylvania Chapter of the APA's liability is limited to 100% refund of registration fees and does NOT include penalty fees on travel tickets, deposits for hotel accommodations, or any other incurred expenses.

INFORMATION ON

HOTEL/ RESERVATIONS



Renaissance Allentown Hotel – Official Hotel of the Annual Conference

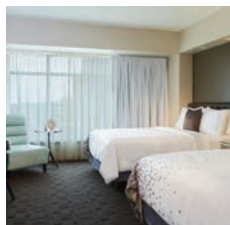


Renaissance Allentown Hotel 12 N. Seventh Street, Allentown PA 18101

Room Rate:

\$164 Single/Double (Plus applicable taxes)

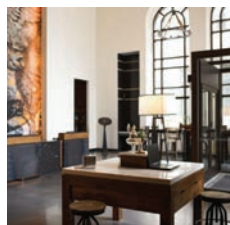
Book your group rate for American Planning Association Room Block or call 1-844-845-2259 reference American Planning Association, PA Chapter Rates will be available 3 days prior and 3 days after the conference based on availability of guest rooms. **The room block cut-off date is Friday, September 23, 2016, but DO NOT WAIT to make your reservation as we anticipate the hotel will be sold out.**



How to Make a Reservation:

You can make a hotel reservation online at our individualized Renaissance registration link <http://www.tinyurl.com/2016APAPAHotel>

If you prefer to speak to a reservation agent, call 1-844-845-2259 and ask to speak to In House Reservations, and mention you would like to book for the American Planning Association, PA Chapter.



Parking:

DAY GUESTS

Valet parking is \$16 daily

On-site parking is \$12 daily

FOR OVERNIGHT GUESTS

Valet parking is \$11 daily

On-site parking is \$7 daily

Take your parking ticket to the Front Desk

The Parking garage entrance is on W. Linden Street. Follow the signs from the garage to the hotel. If the weather is nice, you may want to go outside and walk up Seventh Street to the hotel entrance (it's less confusing).

Come early...stay late...

Local attractions include:

PPL Center (Allentown Arena) – **connected to the hotel!**

ArtsWalk – **across the street!**

DaVinci Science Center

Lehigh Valley Zoo

Coca Cola Park

Lehigh Valley Laser Tag

Dorney Park & Wildwater Kingdom

Allentown Art Museum

Blue Mountain Ski Area

Hawk Mountain Sanctuary

Allentown Symphony Hall

...and much more...

Discover great shopping, enjoy eclectic dining, engage in fun activities, and experience local attractions. There is something for everyone! Visit Discover Lehigh Valley for more information.



TRAVELINFO

Getting to the Conference

Driving Directions:

Get Directions (<http://www.renaissanceallentown.com/location.aspx>)

Directions from Lehigh Valley International Airport

- Exit the airport following signs for PA-987 S/Airport Rd.
- Turn right onto PA-987 S/Airport Rd. and continue for 2.1 miles.
- Turn right onto Union Blvd. and continue onto Tilghman St.
- Turn left onto N Front St. then turn right onto W Linden St.
- Turn left onto N 9th St.
- Take the 2nd left onto Hamilton St.
- The hotel is located on the lefthand side

CONFERENCE GREENING

In keeping with the PA Chapter's mission, the chapter incorporates the following sustainability initiatives to reduce the impact of the conference on the environment:

- Conference Announcement **was not printed** to reduce the Chapter's carbon footprint.
- **Purchase products** made from recycled, recyclable, and rapidly renewable materials.
- Work with the hotel to **purchase local foods** and plan a seasonal menu.
- Prominent on-site effort to **increase recycling** of cardboard, paper, plastic bottles, and cans.
- **Donate excess food** to a food rescue agency when possible or to the employee cafeteria when we cannot.
- Encourage exhibitors to **use products made from recycled, recyclable, and rapidly renewable materials**.
- **Water stations** in lieu of bottled water breaks.

We encourage attendees to participate in these initiatives through the following options:

- Participate in the **hotel's linen reuse program** (sheets and towels). Information can be found in the guest rooms.
- **Return waste paper** to conference registration for recycling.
- **Register for the conference online** to save postage and paper costs.
- **Carpool** with colleagues, or take public transportation.

Making an Impact with Printing Choices: Paper is a crop and it's renewable. Production of paper makes use of large amounts of water and chemicals, and uses a tremendous amount of energy. Choosing an environmentally responsible paper for printed materials is one way the PA Chapter of APA can walk the "green" talk in a big way. The PA Chapter of APA works with the printer to choose an environmentally friendly company whose paper production practices save millions trees a year.



APA-PA2017

annual conference

OCTOBER 22 – 24, 2017
The Penn Stater • State College, PA